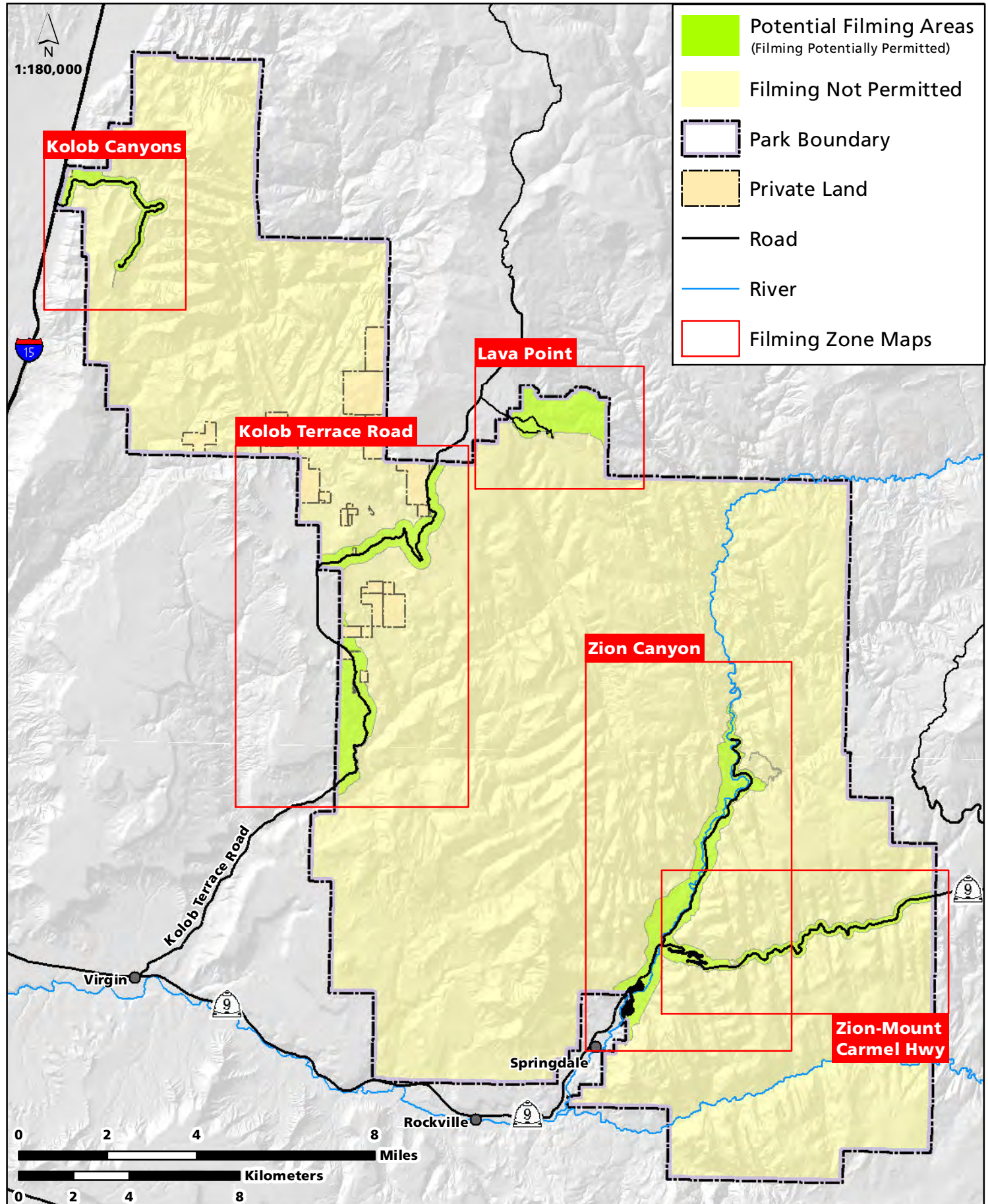


# Zion Filming Zones Overview

National Park Service  
U.S. Department of the Interior

Zion National Park



# Zion Canyon Filming Zone

National Park Service  
U.S. Department of the Interior



Zion National Park

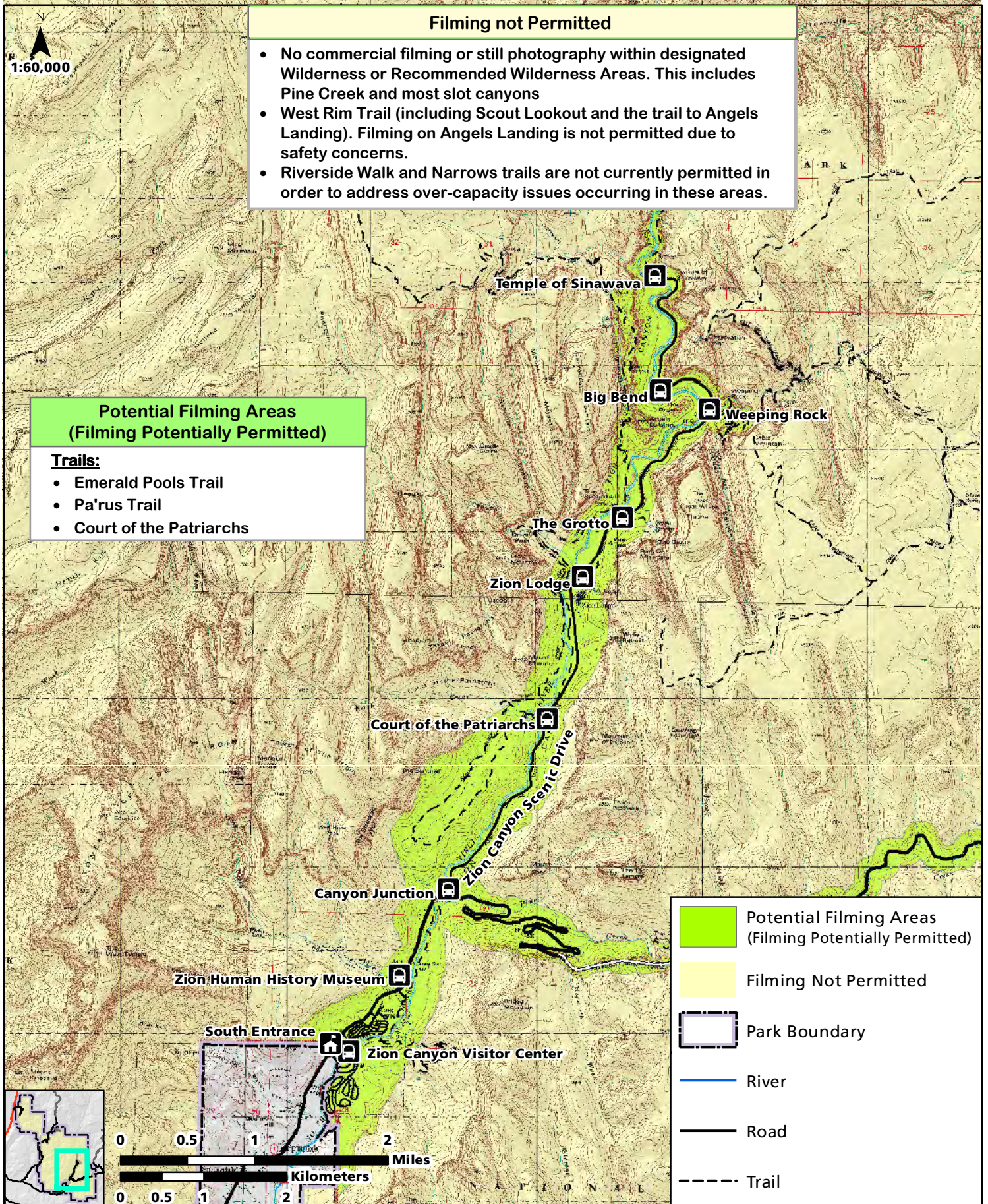
## Filming not Permitted

- No commercial filming or still photography within designated Wilderness or Recommended Wilderness Areas. This includes Pine Creek and most slot canyons
- West Rim Trail (including Scout Lookout and the trail to Angels Landing). Filming on Angels Landing is not permitted due to safety concerns.
- Riverside Walk and Narrows trails are not currently permitted in order to address over-capacity issues occurring in these areas.

## Potential Filming Areas (Filming Potentially Permitted)

### Trails:

- Emerald Pools Trail
- Pa'rus Trail
- Court of the Patriarchs

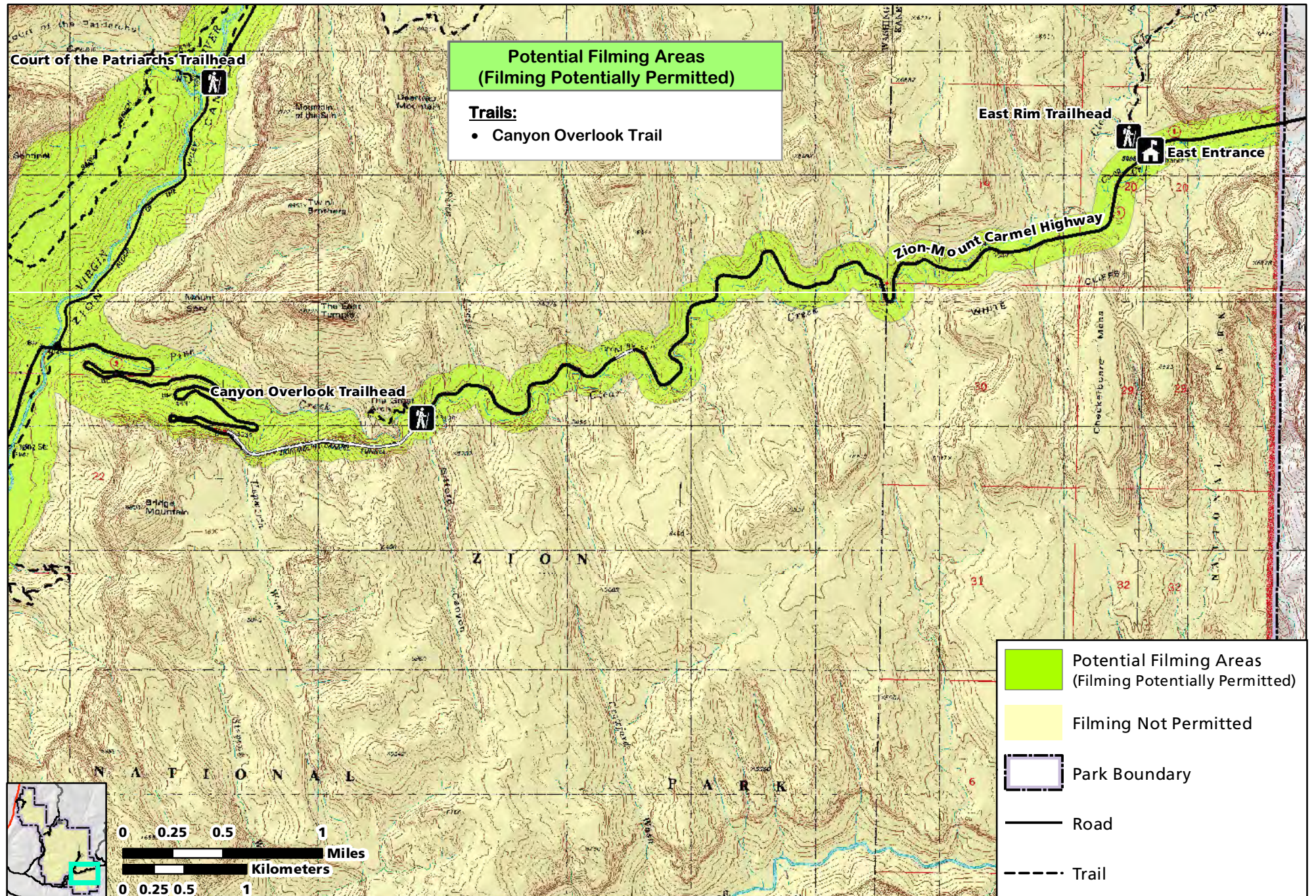


# Zion-Mount Carmel Highway Filming Zone

National Park Service  
U.S. Department of the Interior



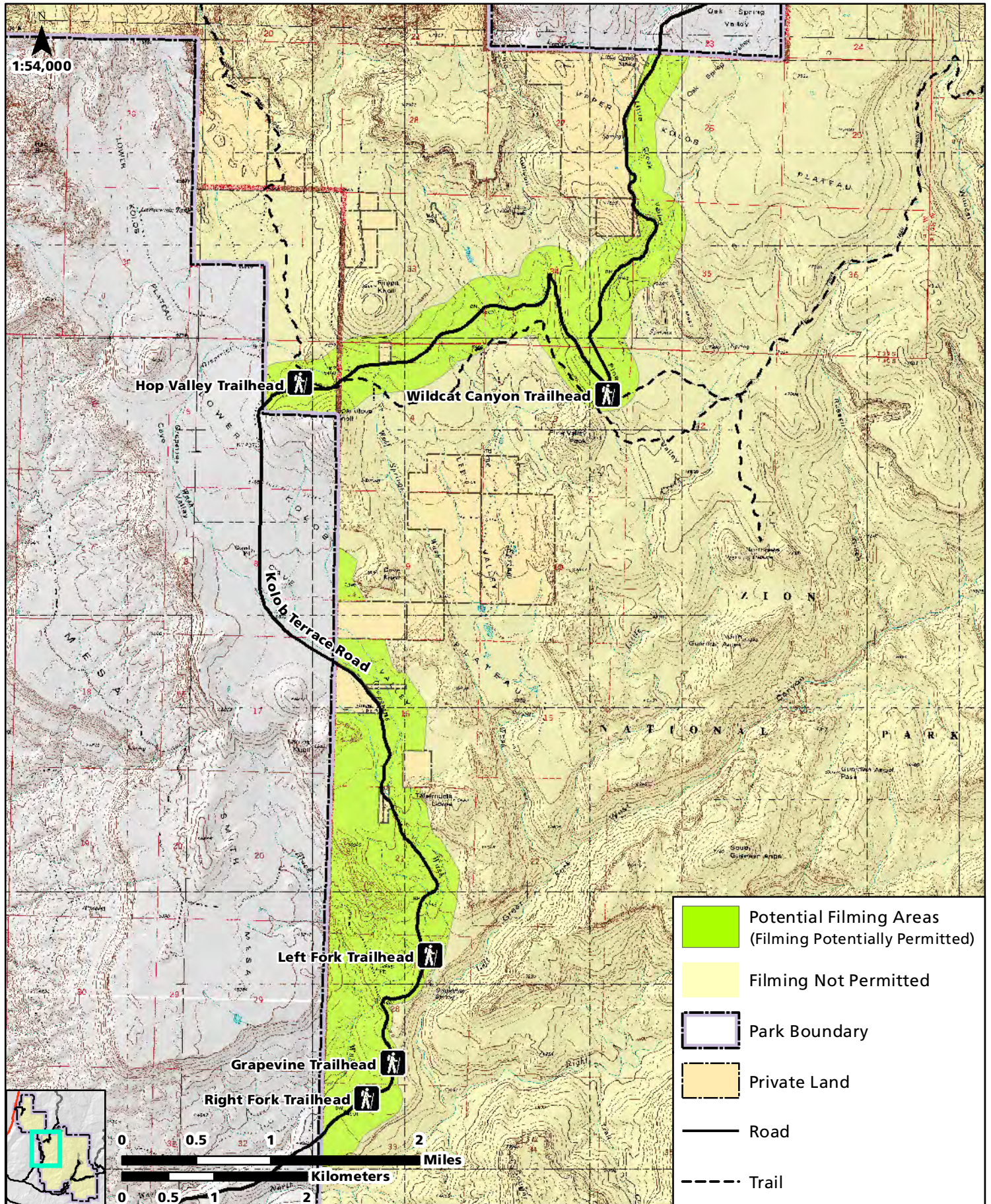
Zion National Park



# Kolob Terrace Road Filming Zone

National Park Service  
U.S. Department of the Interior

Zion National Park

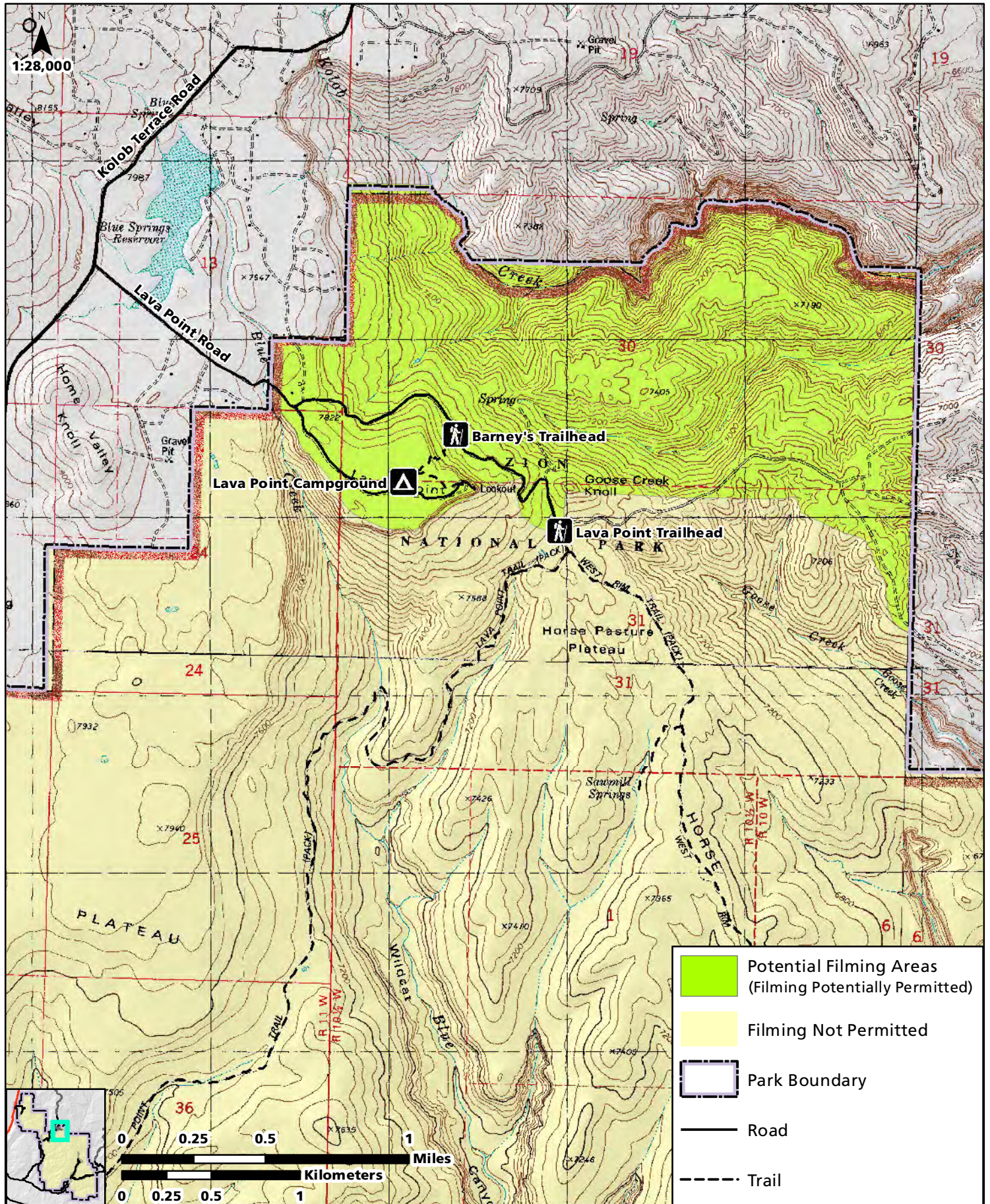


# Lava Point Filming Zone

National Park Service  
U.S. Department of the Interior



Zion National Park



# Kolob Canyons Filming Zone

National Park Service  
U.S. Department of the Interior



Zion National Park

