



Federal Subsistence Board News Release



U.S. Fish and Wildlife Service
Bureau of Land Management
National Park Service
Bureau of Indian Affairs

Forest Service

For Immediate Release:
May 24, 2024

Contact: Robbin La Vine
(907) 206-0900 or (800) 478-1456
robbin_lavine@fws.gov

Federal Public Lands Closed to All Sheep Hunting in Portions of Units 20E and 25C for the 2024 and 2025 Seasons

The Federal Subsistence Board (Board) took action on Temporary Wildlife Special Action, WSA24-01, requesting closure of sheep hunting to all users within the Yukon-Charley Rivers National Preserve (YUCH) in Units 20E and 25C for the fall 2024 season. The Board approved WSA24-01 with modification to extend the closure through the 2025 regulatory year and to also close Federal public lands in the North Peak Mountain area within the Glacier Mountain Controlled Use Area (CUA) in Unit 20E to all users (**See Map**).

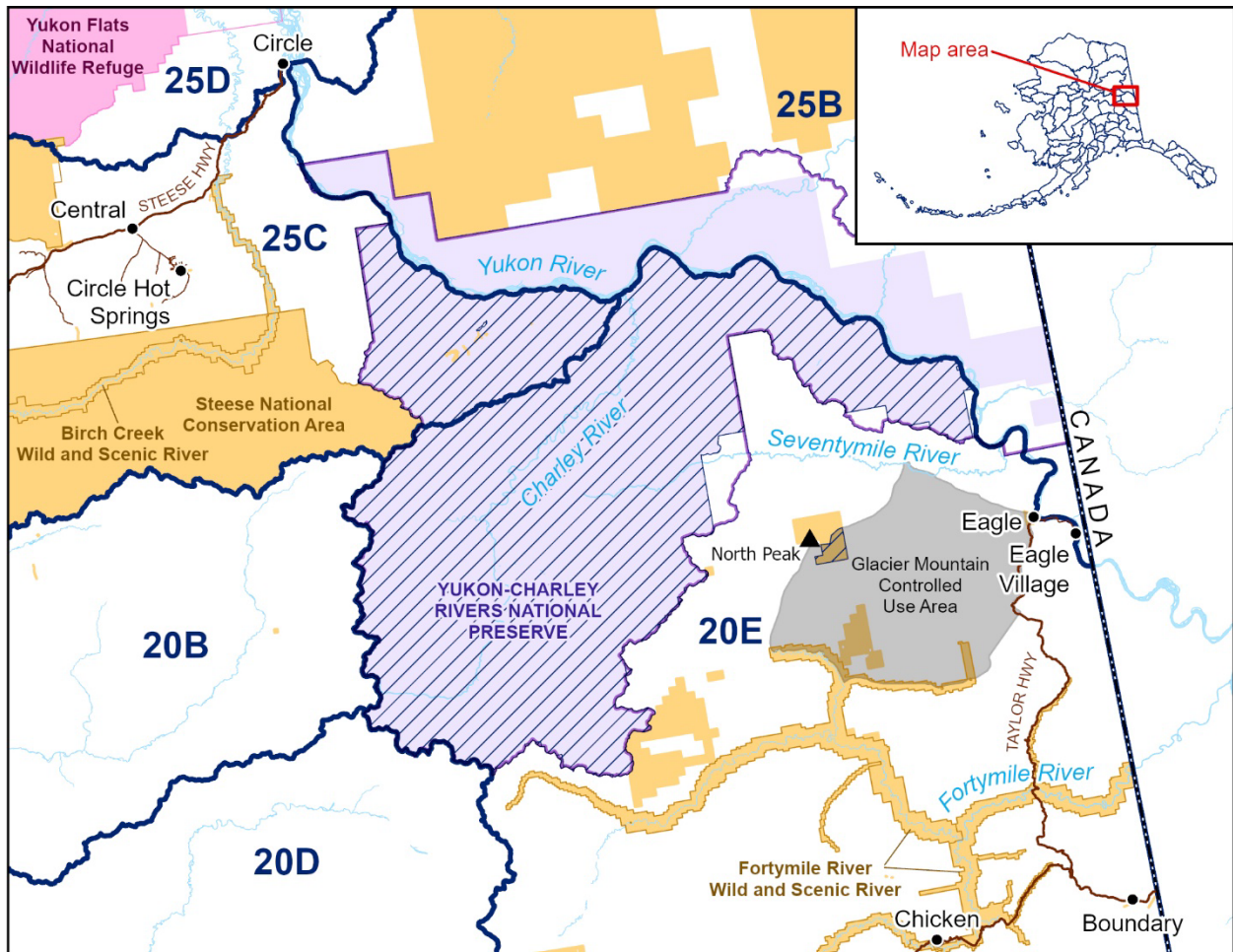
The Board recognized extreme population concerns for the YUCH and Glacier Mountain CUA sheep populations. Both populations have experienced substantial declines in recent years. In YUCH, the most recent surveys conducted in 2023, reported a 75% decline with only two legal rams observed. The Glacier Mountain CUA sheep population has significantly decreased to only 14 sheep observed in 2023, with low lamb production and no legal rams observed in the past two years. Any additional mortality could extend the duration of recovery and put localized populations at risk.

The Board's action supports the Eastern Interior Subsistence Regional Advisory Council's recommendation to extend the closure through 2025 and to close the North Peak Mountain area. The Board extended the closure to provide additional time for population recovery and focused the closure on the Federal lands within the Glacier Mountain CUA that would have the most impact on sheep harvest and recovery of the sheep population. The North Peak Mountain area contains high elevation, quality sheep habitat and provides a travel corridor for sheep between YUCH and the CUA.

Additional information on the Federal Subsistence Management Program may be found on the web at www.doi.gov/subsistence or by visiting www.facebook.com/subsistencealaska.

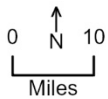
Missing out on the latest Federal subsistence issues? If you'd like to receive emails and notifications on the Federal Subsistence Management Program you may subscribe for regular updates by emailing fws-fsb-subsistence-request@lists.fws.gov.

###-



Federal public lands closure

Federal public lands closed to all sheep hunting in portions of units 20E and 25C for the 2024 and 2025 seasons



This map is for general reference purposes only. Federal public land status shown in this map is subject to change. The Office of Subsistence Management cannot guarantee the accuracy, completeness or currency of data and assumes no liability for damages resulting from the use of this map.
Map date: May 23, 2024

- Federal public lands closed to sheep hunting
- Special use area
- Federal Public Lands**
- BLM Administered Lands
- NPS Administered Preserves
- USFWS Administered Lands