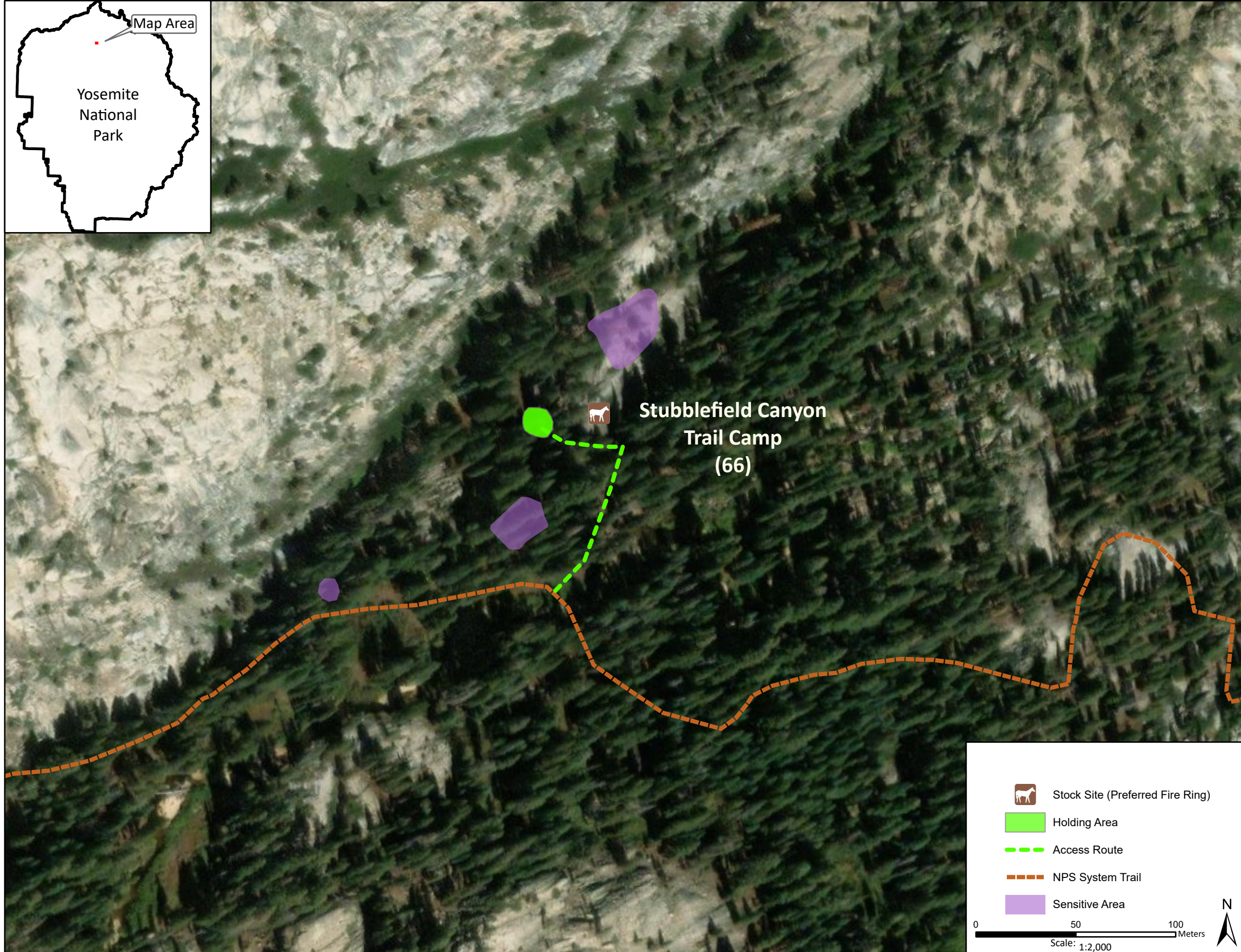
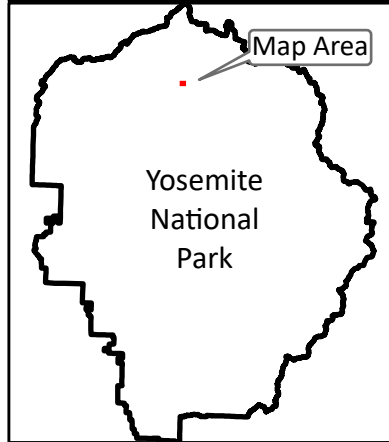


Stock Site Evaluation Project Stubblefield Canyon Trail Camp

Yosemite National Park
California

National Park Service
U.S. Department of the Interior



Forage Area: The forage area has not been investigated for this site, but there is a small meadow located approximately 150 m southwest of the site between the NPS system trail and Stubblefield Canyon Creek.

Annual Grazing Capacity: 6 stock use nights

Stubblefield Canyon Trail Camp

Camp ID: 66

Fire Ring: 272,718mE x 4,215,607mN

Handling Practices: This site is in Stubblefield Canyon on the west side of Stubblefield Canyon Creek. The access route heads northeast from the NPS system trail and continues approximately 80 m along the west side of the creek to the fire ring. The unloading area is at the fire ring. The holding area is approximately 40 m west of the fire ring and is bordered to the east by a bedrock outcrop. Do not camp or hold animals in the sensitive resource areas north and south of the site due to concerns about stock use causing potential impacts.