

Stock Site Evaluation Project Lower Kerrick Meadow

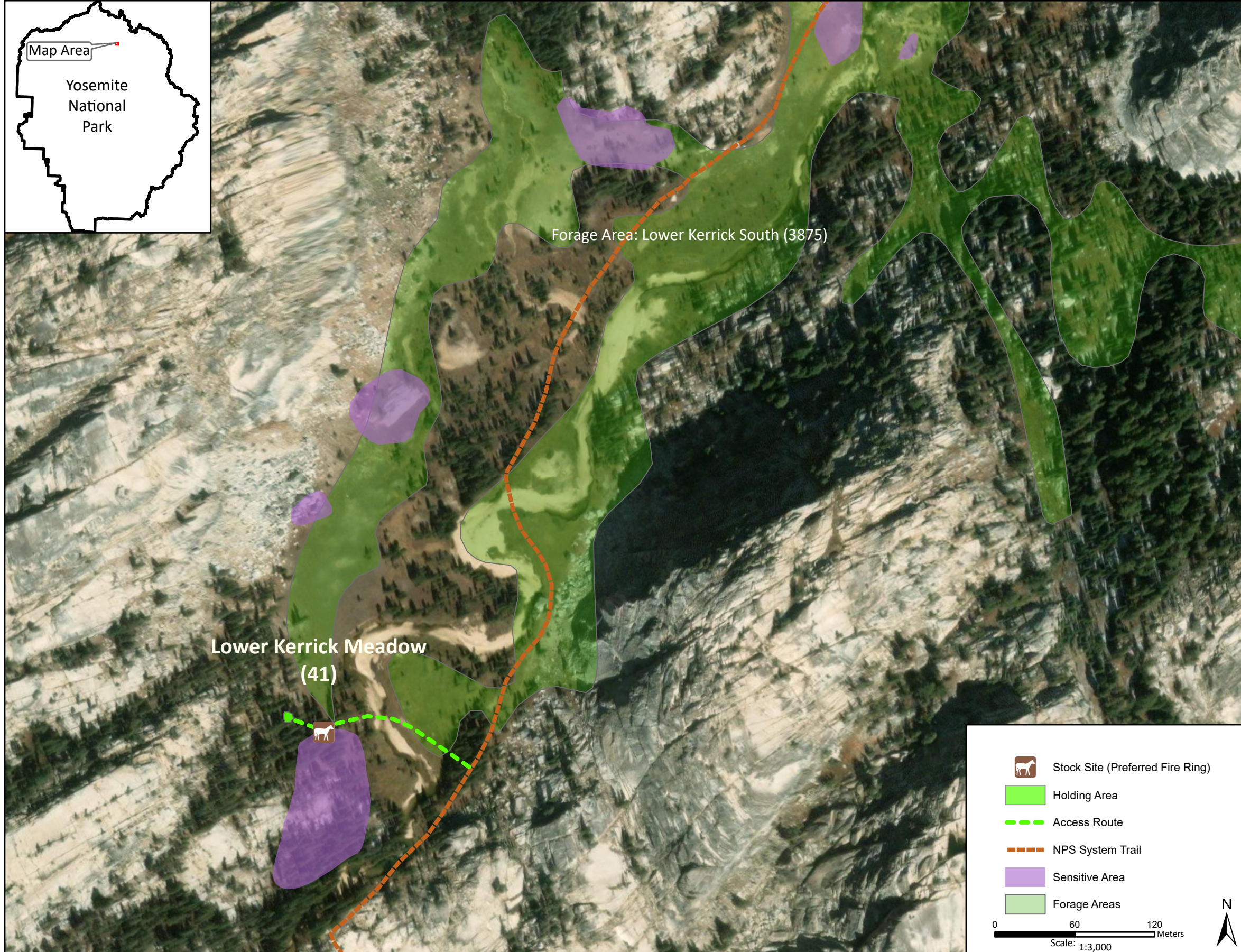
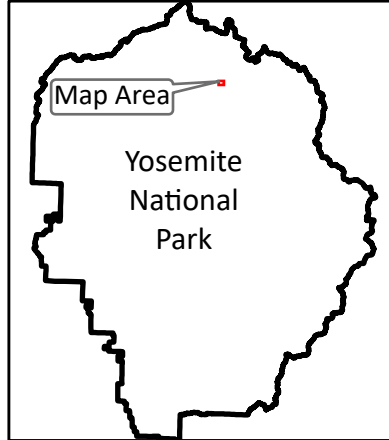
Yosemite National Park
California

National Park Service
U.S. Department of the Interior



Forage Area: Lower Kerrick South (3875) - There is a large meadow area east of the site and surrounding understory forage on both sides of the creek.

Annual Grazing Capacity: 33 stock use nights



Lower Kerrick Meadow

Camp ID: 41

Fire ring: 279,228mE x 4,215,118mN

Handling Practices: This site is located at the southwestern edge of Lower Kerrick Meadow. Wranglers should lead animals from the NPS system trail west across the meadow, cross the creek, and head to the fire ring that is at the northern edge of a bedrock outcrop in a group of trees on the southern edge of the meadow area. The unloading area is at the fire ring, and the holding area is 25 m west of the fire ring. Do not camp or hold animals in the sensitive resource area immediately south of the site due to concerns about stock use causing potential impacts.