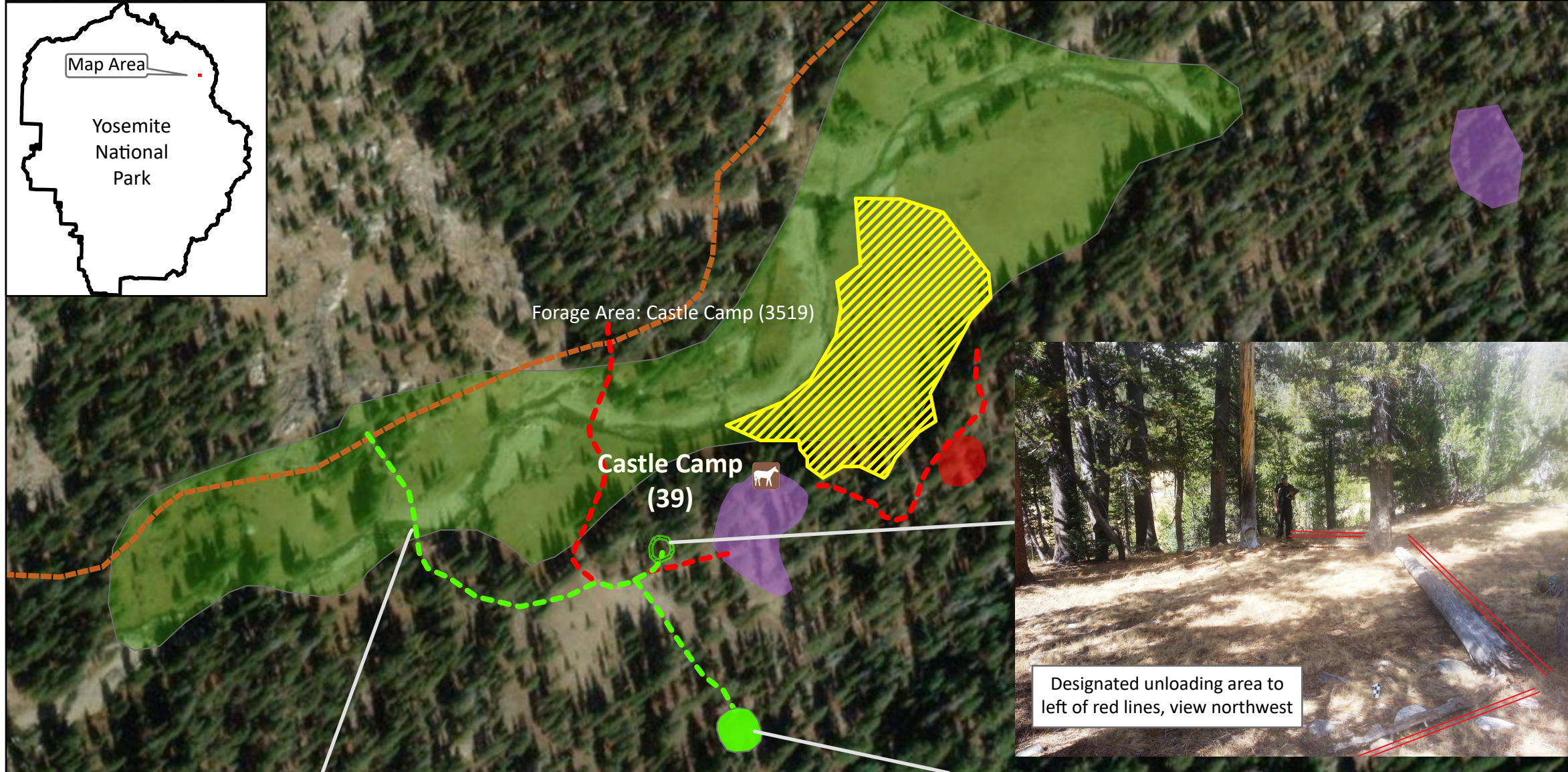
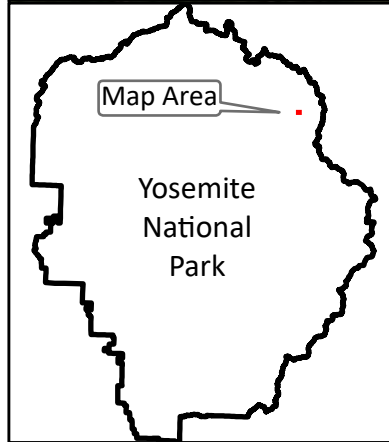


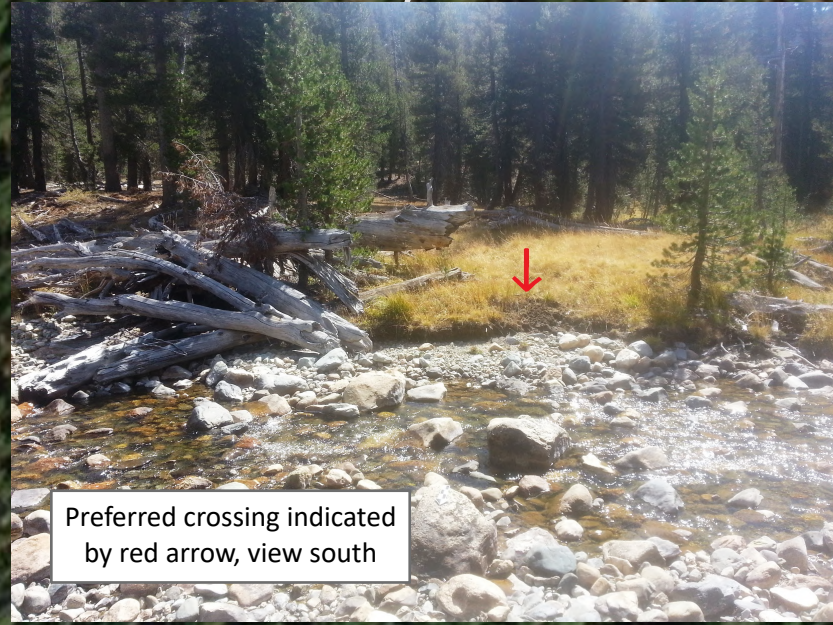
Stock Site Evaluation Project
Virginia Canyon - Castle Camp

Yosemite National Park
 California

National Park Service
 U.S. Department of the Interior



Designated unloading area to left of red lines, view northwest



Preferred crossing indicated by red arrow, view south



Designated holding area within red lines, view south

	Stock Site (Preferred Fire Ring)
	NPS System Trail
	Closed Holding Area
	Holding Area
	Access Route
	Closed Access Route
	Preferred Stock Unloading Area
	Closure
	Sensitive Area
	Forage Areas

0 30 60 Meters
 Scale: 1:1,750

Forage Area: Castle Camp (3519) - The fen (shown as closed area on map) is closed to grazing. Keep animals out of sensitive resource areas shown on map. This may require use of electric fencing or supplemental feed.

Annual Grazing Capacity: Supplemental Feed Only

Virginia Canyon - Castle Camp

Camp ID: 39
 Fire Ring: 293,073mE x 4,210,529mN
 Handling Practices: Do not use the former access route northwest of the site. This route has damaged meadow areas and crosses the creek at an unstable location. Use the preferred access route west of the camp. Use unloading area approximately 30 m southwest of fire ring. Do not unload or load animals within the sensitive resource area where the fire ring is located. Use holding area up the slope approximately 80 m south of the fire ring as shown on the map. Do not hold stock in sensitive resource area where fire ring is located.

Objects older than 50 years are considered historical and can be significant pieces of our collective history. A concentration of these materials is called an archeological site and these sometimes overlap with stock camps. These materials are protected by the National Historic Preservation Act of 1966, as amended, and the Archeological Resources Protection Act of 1979. Removal of artifacts from their location destroys essential information needed to understand who was here and how they lived. It is illegal to collect artifacts or intentionally disturb archeological sites and can result in fines and other penalties.