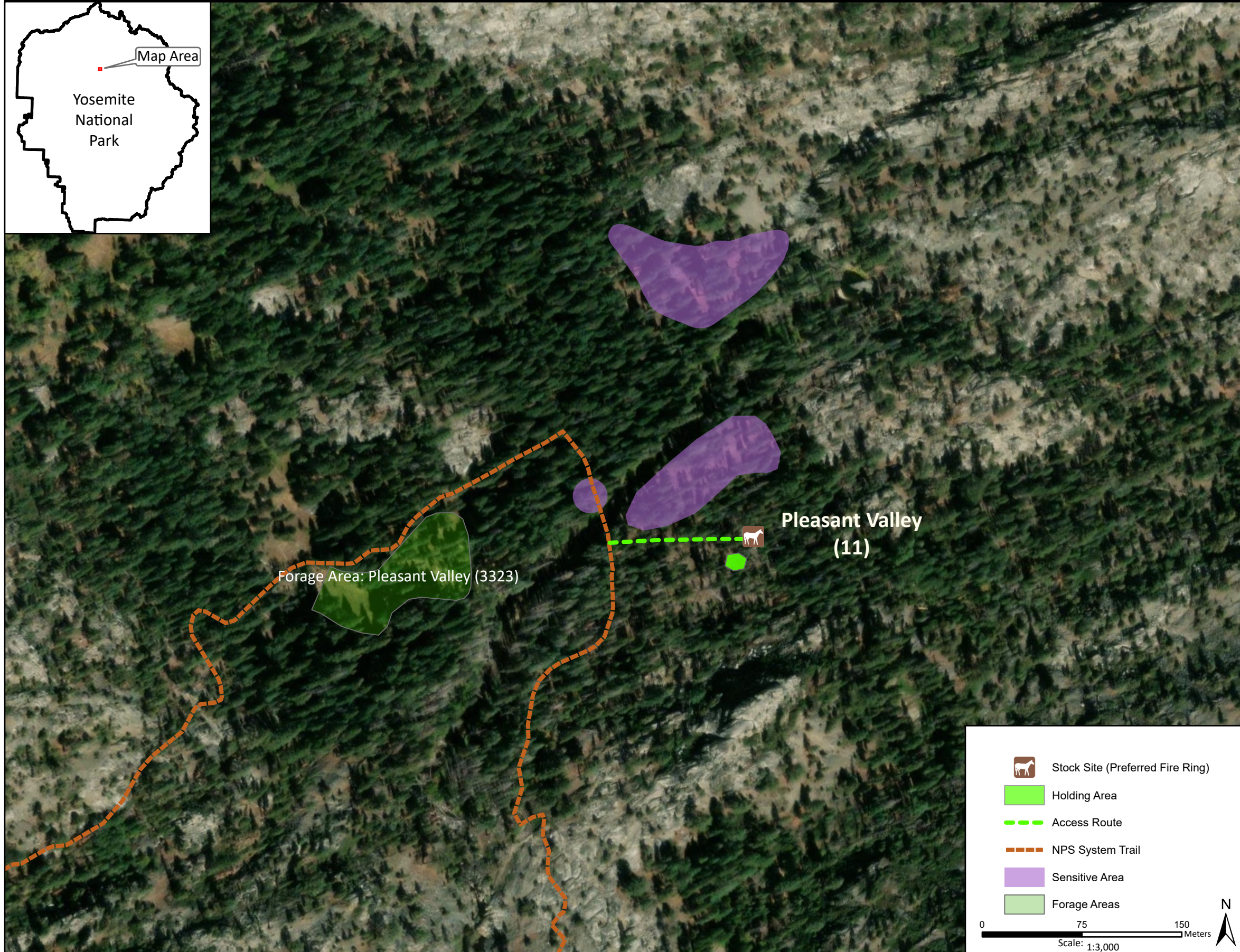
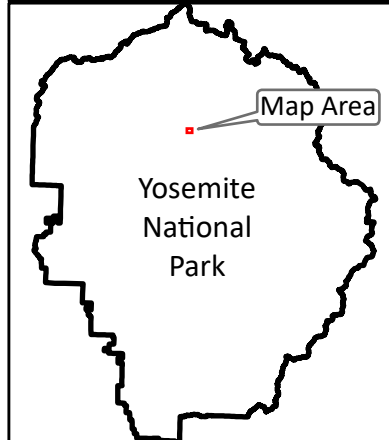


# Stock Site Evaluation Project Pleasant Valley

Yosemite National Park  
California

National Park Service  
U.S. Department of the Interior



Forage Area: Pleasant Valley (3323) - The forage area for this site has not been investigated, though it is suspected that there is some understory forage in this area. There are multiple small meadows west of Piute Creek, but it is unclear if these are suitable for stock use.

Annual Grazing Capacity: 12 stock use nights

## Pleasant Valley

Camp ID: 11

Site Location: 274,006mE x 4,207,254mN

Handling Practices: The former stock site location was north of Piute Creek, but stock use there was discontinued due to impacts to sensitive resources. The current site location is approximately 100 m south of Piute Creek. The access route heads east 100 m from the NPS system trail to the fire ring. The unloading area is at the fire ring. The holding area is approximately 15 m southwest of the fire ring. Do not camp or hold stock along the southern edge of Piute Creek due to concerns about stock use causing impacts to the sensitive resources in this area.

