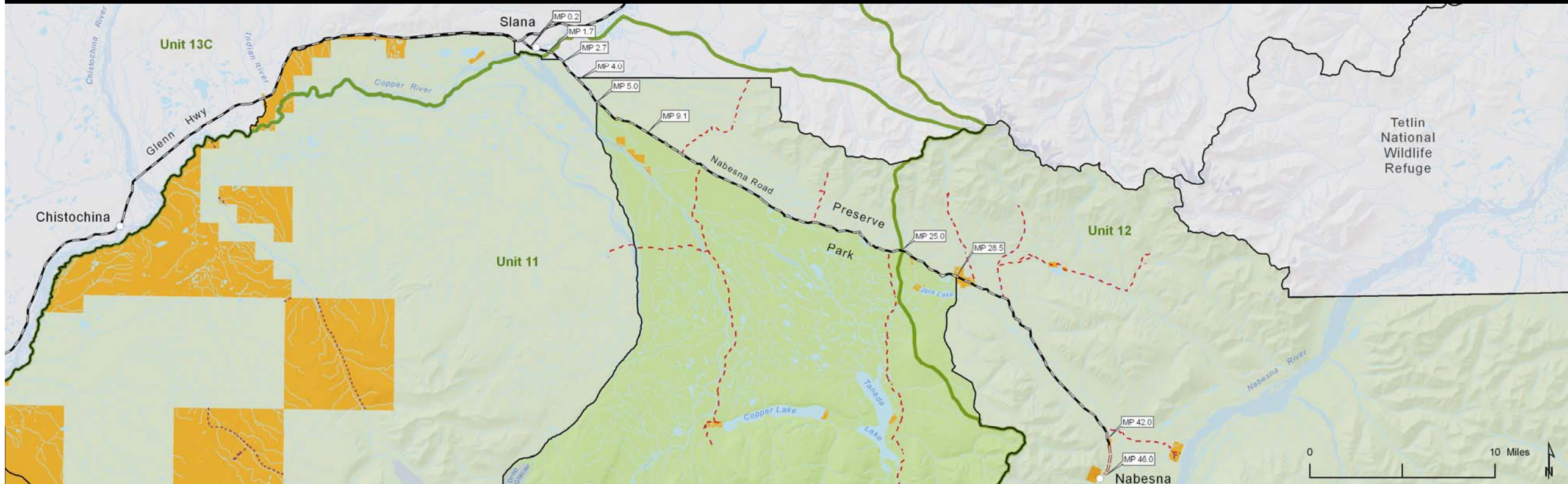


Nabesna Road Land Status Map



Federal Public Lands

- | | | | |
|------------------------------------------------------------------------------------|-------------------|-------------------------------------------------------------------------------------|-----------------------|
|  | National Park |  | Game Management Units |
|  | National Preserve |  | Trails |
|  | Non-Federal Lands |  | Easements |

Nabesna Road Mileposts

- Mile 0.2** Slana Ranger Station. Stop here for ORV/ATV permits, federal subsistence registration permits, trail locations, regulation booklets, maps, and road conditions. Open 7 days a week, 8 AM to 5 PM, June through September.
- Mile 1.7** Game Management Unit 11 boundary.
- Mile 2.7** Wrangell-St. Elias National Preserve boundary. The south side of the road forms the northern boundary of the Preserve for the next 1.3 miles.
- Mile 4.0** Wrangell-St. Elias National Preserve boundary. Land on both sides of the road is National Preserve.
- Mile 5.0** Wrangell-St. Elias National Preserve Boundary. The south side of the road is Park and the north side of the road is Preserve.
- Mile 25.0** Game Management Unit 12 boundary.
- Mile 28.5** End of northern Park boundary. National Preserve is on both sides of the road.
- Mile 42.0** End of state maintenance of Nabesna Road.
- Mile 46.0** Nabesna Mine. Permission from owner is required before entering.

Non-federal lands include Native Corporation conveyed lands, small isolated private tracts, University of Alaska lands, and State of Alaska lands (e.g., Department of Natural Resources)

Federal subsistence regulations do not apply on non-federal lands.

These maps only show land status within the boundaries of Wrangell-St. Elias National Park and Preserve. For information about the location of other federal public lands in the area that are open to subsistence contact the appropriate federal land management agencies -- the Bureau of Land Management, the U.S. Fish and Wildlife Service, and the U.S.D.A. Forest Service.

