



# The Whiskeytown Nugget



Summertime view of Whiskeytown Lake and Shasta Bally.

## Welcome to Whiskeytown!

Welcome to Whiskeytown National Recreation Area! We hope you have positive, safe, memorable experiences in this special place.

There is always a lot going on at Whiskeytown, and in this 2024 edition of the Whiskeytown Nugget, we are delighted to share with you our recommendations for places to go on top of page two, information on our ranger-guided interpretive programs at the bottom of page two, and how to hike our just-reopened Kanaka Peak Trail on the bottom of page three. Additionally, the Beach Bus is back this summer and you can learn more about this free and green transportation option on the back cover. Finally, learn about the dedicated partners in the park on the bottom of page five. Please be safe out there in this busy park and please enjoy Whiskeytown!

- Josh Hoines, Park Superintendent



## There it is, Explore It: The Vast Majority of Your National Recreation Area is Open

By Scott Einberger, Interpretation Supervisor

Did you know that 80% of the park's trail system, 80% of our road network, and 95% of our campgrounds have been restored and reopened since the devastating and unprecedented Carr Fire of 2018? This means you can access three waterfall trails. This means you can partake in a relaxing overnight stay in not only our front-country campgrounds but our off-the-beaten-path primitive ones at Brandy Creek, Sheep Camp, and Crystal Creek.

While additional trails have just reopened like Kanaka Peak Trail and Clear Creek Vista Trail, one thing that some visitors have told me they love is hiking and mountain biking on the roads that remain closed to vehicles. Traveling such narrow, winding gravel roadways as South Fork Mountain Lookout Road, Peltier Valley Road and Shasta Bally Road on foot or on bicycle offers a non-motorized, slower paced, safe-from-cars experience. I for one have hiked Peltier Valley Road from Peltier Bridge Primitive Campground to Panther Gap 10 times in the past two years

and have enjoyed the sweat and solitude; I've seen only three mountain bikers and no one else during these 10 trips!

I like to challenge myself sometimes physically and in April 2024, I scaled Shasta Bally from Sheep Camp Primitive Campground. This is an extremely strenuous hike; it should only be attempted by advanced hikers and should not be hiked during hot weather. The hike up Shasta Bally Road is steep the entire way, climbing 4,400 feet in 5.5 miles (it's like climbing Lassen Peak twice!).

The bottom line is that the majority of your national recreation area has reopened since the megafire and we invite you to come out and enjoy it. We also want to thank you for your patience as we work to restore the remaining closures in the most fiscally responsible and environmentally sustainable manner possible. If you have questions about reopenings or closures, feel free to email me at [Scott\\_Einberger@nps.gov](mailto:Scott_Einberger@nps.gov). Happy Trails!

### Inside you will find...

Pages one to seven of the newspaper spotlight places to go, things to do, and how to have a safe and law-abiding visit. The rest of the newspaper provides you with current news.

### Summertime Programs

Kayak Tours, Paddleboard Tours, Junior Firefighters, and more! Make positive memories at Whiskeytown by participating in a ranger-led program. Learn more on page two.

### Recreate Responsibly

We don't want you to end up hurt or in handcuffs. Learn how to have a safe and law-abiding visit on pages four and five.

### Person of the Park: Mary Nowak

Does Whiskeytown's Congressionally allocated budget pay for everything in the park? Learn all about park employee Mary Nowak on page nine.

### Your Entrance Pass Dollars at Work

Thank you for supporting Whiskeytown! On page 11, discover how your entrance pass and campground fees help your visitor experience.

### Beach Bus

Check the back cover of this newspaper to see how you can enjoy free transportation to the park this summer. Cut your carbon footprint and reduce congestion in the park.

### Want to Work at Whiskeytown?

On page 10, get insider tips on when and how to apply for jobs in the park.



# Places to go and Things to do at Whiskeytown

\* Located at Highway 299 and Kennedy Memorial Drive, Whiskeytown's **Visitor Center** should be your first stop. You can purchase your entrance pass, shop at the Western National Parks Association bookstore, read the outdoor exhibits, and obtain park information.

## Brandy Creek Beach & Marina

During the long, hot days of summer, Whiskeytown's largest and most popular beach is a great spot for water play, swimming, suntanning, and relaxing. Kayaks and paddleboards can be rented daily from Memorial Day to Labor Day, and a shaded picnic area beckons. Nearby is Brandy Creek RV Campground and Brandy Creek Marina, including a boat ramp.

## Crystal Creek Road Area

This narrow, winding roadway off Highway 299 takes you to trailheads for the popular Crystal Creek Falls and Whiskeytown Falls. The hike to Crystal Creek Falls is short, flat, paved, and fully accessible, and the cascade is a popular summertime spot for water play. The James K. Carr Trail to Whiskeytown Falls is a strenuous 1.7-mile-long hike (3.5 miles roundtrip) ending at the tallest cascade in the park. Be sure to bring lots of water.

## Oak Bottom Beach & Marina

Another popular summertime location, Oak Bottom includes a beach, tent and RV campground, marina with boat rentals, a boat launch, small store, accessible fishing pier and picnicking area. All facilities are open year-round. For boat rentals and campsite reservations, visit [whiskeytownmarinas.com](http://whiskeytownmarinas.com). Whiskeytown Marinas LLC is the park's authorized concessioner.

## Tower House Historic District

Weave your way past California Gold Rush era buildings and fruit trees at the park's signature historic site. Leave the lakeshore crowds behind as you learn about the historic community of Tower House on a short, self-guiding interpretive trail. Splash in the creek or pan for gold on a hot day. The Camden House is one of the oldest buildings in Shasta County.

## Ranger-Led Programs

May 24 - September 2

Program	MON	TUE	WED	THU	FRI	SAT	SUN
Kayak Tour	9am				9am	9am	9am
Paddle Board Adventure	1:30pm				1:30pm	1:30pm	1:30pm
BYOK Program (Bring Your Own Kayak)	Select Saturday Mornings, Check Facebook or Instagram						
Junior Rangers	10 am on Select Saturdays: May 25, July 6, August 31						
Junior Firefighters	11 am on Select Saturdays: May 25, July 6, August 31						



A Ranger-led paddle board program on Whiskeytown Lake. Did you know that Whiskeytown National Recreation Area is the only unit of the National Park System that provides interpretive paddle board programs?!

## Program Descriptions

### BYOK (Bring Your Own Kayak) Program

New this year, get some paddle exercise, explore Whiskeytown Lake and make new friends using your own kayak, paddle, and lifejacket. This BYOK intermediate level program will alternate locations on select Saturday mornings. Ages 16 and older. See the park's Facebook page or email [WHIS\\_Information@nps.gov](mailto:WHIS_Information@nps.gov) to see if there's a BYOK program during the Saturday of your visit.

### RISE & SHINE KAYAK TOUR (Pre-Registration Required)

Hop on one of the park's two-person kayaks with a friend or family member and explore the quiet coves of Whiskeytown Lake with an interpretive park ranger. Children must be six years of age or older and must be accompanied by an adult. No prior kayak experience needed. Lifejackets provided and required to be worn. Two and a half hour program. Reservations can be made up to two weeks in advance; scan the QR code below or visit <https://tinyurl.com/3ccxa3cp>.

### PADDLE BOARD ADVENTURE (Pre-Registration Required)

Designed for visitors with little or no previous experience on a paddleboard, a ranger will teach the basics to help you gain confidence with this popular activity. Children must be 10 years of age or older. Plan on falling in! Lifejackets provided and required to be worn. One and a half-hour program. Reservations can be made up to two weeks in advance; scan the QR code below or visit <https://tinyurl.com/3ccxa3cp>.

### JUNIOR RANGERS

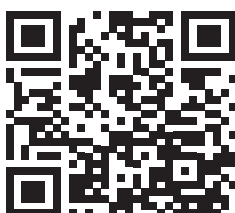
Children and families are invited to learn about the park through interactive activities during this 45-minute program at Oak Bottom Amphitheater. Upon completing this program, children will receive their very own Whiskeytown Junior Ranger patch.

### JUNIOR FIREFIGHTERS

Children and families will head inside the Whiskeytown Fire Station at Oak Bottom to learn all about the park's fire management program. Unravel a fire hose, dress up in firefighter gear, and more during this 45-minute program. At the end of the program, children will receive a Whiskeytown Junior Firefighter patch.

### Moonlight Kayak Tour (Pre-Registration Required)

During select evenings in July and August, enjoy kayaking at sunset and moonrise over Whiskeytown Lake. Scan the QR code at right to see the select dates of this program.



### MOVIE NIGHT

Saturday night is outside movie night at Oak Bottom Amphitheater! Hosted by Whiskeytown Marinas, check the Oak Bottom Campground Store for schedule. 9pm Memorial Day through July; 8:30pm August. Free popcorn. Drinks and snacks for sale.

\* Whiskeytown strives to make programs accessible to as many different people as possible. If you are interested in attending a program and need accommodations, please email us at [scott\\_einberger@nps.gov](mailto:scott_einberger@nps.gov).

\* **¡Hablamos español!** Spanish language interpreters are available for Spanish speakers between Memorial Day Weekend and early August. Email [WHIS\\_Information@nps.gov](mailto:WHIS_Information@nps.gov) for more information.



Why does the interpretive park ranger have her hands raised? What is she talking about? You'll only find out if you join one of the park's ranger-guided kayak tours...



# Recommended Hikes

Easy Trails	Miles One-way	Elevation Change	Trail Highlights and Notes
<b>Camden House &amp; Camden Water Ditch Loop</b>	1.2 Loop	Mostly Level	Trail meanders past historic buildings, restored orchard, and Levi Tower Grave.
<b>Crystal Creek Water Ditch</b> (No bicycles/horses)	1.0	Mostly level	Trail parallels historic water ditch. Some historic features visible.
<b>Crystal Creek Falls</b>	0.4	Mostly Level	Trail is flat and paved. Leads to view of cascade. Popular place for wading.
<b>Oak Bottom Water Ditch</b>	2.7	Mostly Level	Trail parallels lakeshore. Good spots for fishing, good trail for birding.
Moderate Trails			
<b>Boulder Creek Trail to Boulder Creek Falls</b> (via top of Mill Creek Road)	1.1	250 ft.	Trail follows old logging road to waterfall. Significant vegetation regrowth since Carr Fire.
<b>Guardian Rock</b>	1.0	300 ft.	First 1/4 mile from Horse Camp to Clear Creek Gorge overlook is paved and flat. Trail is steep and rocky thereafter.
<b>Mt. Shasta Mine Loop</b>	3.1 Loop	300 ft.	Trail passes through historic mining area. Remnants and mine shafts visible. Some steep sections of trail.
Difficult Trail			
<b>Boulder Creek Trail to Boulder Creek Falls</b> (via South Shore Drive)	2.8	1,000 ft.	Steep trail leading through Carr Fire regrowth to Boulder Creek Falls. Ford the creek three times.
<b>James K. Carr Trail to Whiskeytown Falls</b> (Closed to bicycles and horses)	1.7	700 ft.	Steep trail leading through mixed conifer forest to tallest waterfall in the park. Lots of shade.

\* For a complete list of trails, visit <https://www.nps.gov/whis/planyourvisit/hiking.htm>.

\* In summertime, temperatures are hot. Limit your hiking and mountain bike riding to the early morning or evening to avoid the hottest part of the day, and always carry and drink lots of water.

## Hike to the Top of Kanaka Peak!

After removing hundreds of downed trees along its path, we are delighted to let you know that as of May 2024, the Kanaka Peak Trail has now reopened for the first time since the Carr Fire of 2018! While this is a strenuous hike with substantial elevation gain, the view towards the top awards you with sights of Lassen Peak, Mt. Shasta, the Redding area, Great Central Valley, Trinity Alps, Whiskeytown Lake, and Shasta Bally.

You can park in two different spots to hike to Kanaka Peak...

### Kanaka Peak Trail (from Peltier Valley Road)

**3.5 miles one way, 1,100 feet elevation gain**

To access this trailhead off of Peltier Valley Road, you will first drive up the gravel, winding, narrow, Brandy Creek Road. The trail to the top of Kanaka Peak progresses upward using mostly old logging roads. Relax and enjoy the view from the top of the peak.

### Kanaka Peak Trail (from Peltier Bridge Campground)

**4.5 miles one way, 1,700 feet elevation gain**

This more difficult hike to the top of Kanaka involves parking at Peltier Bridge Primitive Campground and then hiking up the one-mile vehicular closure section of Peltier Valley Road. After the one-mile climb uphill, you hit the Kanaka Peak Trailhead and follow the route described above.

### Some Fun Facts about the Kanaka Peak Hike...

\* During the last two miles of the hike where the trail becomes narrower, notice how many of the conifers survived the Carr Fire. This is largely due to their being on the cooler, shadier, north slope of the mountain rather than the sunnier, hotter south slope.

\* The name "Kanaka" is an old term that was used in the 1800s to describe someone from Hawaii, or more broadly the Pacific Islands and even Asia. The Kanaka Peak name helps convey the fact that the California Gold Rush was multicultural; miners from all over the world flocked to the Whiskeytown region of the state.

\* Be prepared to ford creeks, particularly in winter and spring.

## Hey Kids!

Grab your free Whiskeytown Junior Ranger Activity Book at the Visitor Center! When you have completed the book, share it with a park ranger back at the Visitor Center and receive your very own Whiskeytown Junior Ranger Badge. A Whiskeytown Junior Firefighter Book as well as other Junior Ranger books are also available.



Children are also invited to attend ranger-led programs. See the calendar on the park website to learn when specifically Junior Rangers and Junior Firefighters programs occur. All of the park's other programs are children and family friendly as well. See Program Descriptions and Ranger-Led Program Schedule on opposite page for further details.

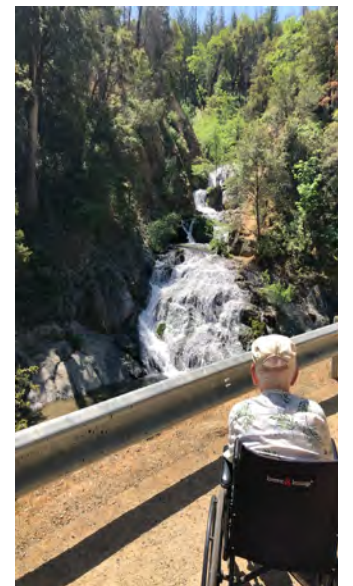
## Campgrounds

From off-the-beaten-path primitive campgrounds offering solitude, peace, and shade to the on-the-lake campgrounds at Oak Bottom, the national recreation area has a good site for you. Scan the QR code or visit the park website for more information.



## Accessibility in the Park

Whiskeytown National Recreation Area strives to be as accessible as possible to as many different people as possible. For a full listing of accessible features, visit [www.nps.gov/whis/planyourvisit/accessibility](http://www.nps.gov/whis/planyourvisit/accessibility).



Above left: audio files of the Visitor Center and Kennedy Memorial wayside exhibits are available for the visually impaired. Above right: the Crystal Creek Falls Trail is wheelchair-accessible. Wheelchair photo courtesy of Ross Perry.

## Entrance Passes

A seven-day pass. An annual pass for Whiskeytown, Lassen Volcanic, Lava Beds, and Crater Lake. A military pass. An access pass. A senior pass. A 4th grader pass. An entrance pass is required to visit Whiskeytown National Recreation Area. See which pass is right for you by heading to the Visitor Center.



Whoa. That's a lot of pass options...



# Recreate Responsibly Protect Yourself and the Park

To protect visitors and the park, Whiskeytown's Law Enforcement Rangers patrol the park constantly. For your safety and the safety of others, please abide by park rules. If you see something suspicious, call the park dispatch office at 530-242-3431.

## Entrance Pass Required

Entrance passes are required to recreate at Whiskeytown. Standard options include the \$25 Weekly Pass or the \$55 Lassen Volcanic-Whiskeytown-Crater Lake-Lava Beds Annual Pass. Several other pass options are available. Passes may be purchased in person at the Visitor Center and Oak Bottom Campground Store. They may also be purchased online at <https://www.recreation.gov/sitepass/74295> or by scanning the QR code below onto your cell phone.



## Dogs Required to be on Leash and No Dogs on Swim Beaches

Whiskeytown allows dogs on trails and most other places. However, to protect small children and others, and to protect the lake's water quality, dogs are not allowed at Brandy Creek Beach, Oak Bottom Beach, and East Beach. In places where dogs are allowed, they are required to be on leash. Please put pet waste in trash receptacles.

## Metal Detecting Not Allowed

Recreational metal detecting is not permitted within the National Park System. Please help protect Whiskeytown's archeology and history for future generations by leaving your equipment at home.

## Keep Valuables With You

Several vehicles get broken into each year at Whiskeytown. To best protect your vehicle, take your valuables and personal belongings with you and keep the interior of your vehicle empty.

## Beat the Summer Heat

Summertime at Whiskeytown is either hot or very hot - on a daily basis, temperatures regularly top out between 100 and 110 degrees Fahrenheit! To beat the heat: limit your direct sun exposure; seek shade; wear sunglasses, a hat, and lots of sunscreen; drink lots of water; exercise in the early morning; know your limits for outdoor exercise; and finally, get into the water!

## Drink Responsibly

Consumption of alcohol is not permitted at Brandy Creek Beach, Oak Bottom Beach, or East Beach. Driving or boating under the influence of alcohol is illegal. It is illegal to drive or boat over the legal blood alcohol level.

## Marijuana is Not Allowed

Marijuana is not permitted on federal lands. Please be respectful of other visitors by not smoking pot in the park.

## Drive Carefully

Fatal car accidents occur on Highway 299 at least once a year inside the park. Please exercise extreme caution when driving in the park and do not drive over the posted speed limit. Drive defensively and be on the lookout for pedestrians, turning or slow-moving vehicles, bicyclists, and wildlife. On the park's gravel roadways, drive extremely slow and honk when approaching blind curves.

## Smoking

Smoking cigarettes and e-cigarettes are prohibited at Whiskeytown except for in the following areas: in your vehicle, on your boat, or in your campsite. You may also smoke at the designated smoking areas at Brandy Creek Beach parking lot, Oak Bottom Beach parking lot, and the Visitor Center parking lot island.



This osprey on the sign post on top of Clair A. Hill Whiskeytown Dam thanks you for purchasing your mandatory entrance pass.

## WATER SAFETY

### Swimming

Swimming in the lake is permitted except for within 100 feet of the Whiskey Creek Bridge (Highway 299 bridge over Whiskeytown Lake), the buoy-enclosed areas around the Glory Hole and Carr Powerhouse, and within 200 feet of any boat launch or mooring facility.

Rope swings are not permitted within the park.

It is always recommended to swim in pairs or have a spotter. Swimming close to shore is recommended. Open water swimming can be dangerous.

Between Memorial Day and Labor Day, youth life jackets are available for use for free at Brandy Creek Beach and Oak Bottom Beach. This life jacket loaner program is based on the honor system and is first come, first served.

### Boating

Children 12 years of age and under must wear a lifejacket while boating. Individuals 13 years old and above must have a lifejacket onboard with them on all vessels. These lifejacket regulations include kayakers and paddleboarders.

Getting out on the water is a popular activity at Whiskeytown and paddling, sailing, motorboating (two or four stroke engines), wakeboarding, water skiing, scuba diving, and swimming are permitted. Jet skiing is not permitted. Boats cannot exceed 36 feet.

For your safety and the safety of others, please be aware of other lake users. Non-motorized watercrafts always have the right of way.

Several areas of the lake are closed to boating or have low speed limits. Please see park map for details.

Out of respect for park wildlife and other visitors, please keep noise levels low. A vessel cannot exceed 75 decibels.

Law enforcement rangers patrol the water regularly. All vessels are subject to inspection by rangers at any time to examine licenses, documents, and compliance with regulations.

### Fishing

California Department of Fish and Wildlife regulations apply in the park. Fishing is allowed year-round on the Whiskeytown Lake. Streams feeding the lake can only be fished from the last Saturday in April through November 15th.

A Whiskeytown Law Enforcement Ranger at our **Youth Lifejacket Loaner Program**. The park provides this free and "honor system" program at Brandy Creek Beach and Oak Bottom Beach from Memorial Day to Labor Day. The Youth Lifejacket Loaner Program is first come, first served - look for the white racks at the beach, grab a lifejacket, fit it to your young child so they can be safe during water play, and then place it back on the rack when you are done so the next child can use it.





## PLEASE HELP US KEEP WILDLIFE WILD

Please do not feed or harass wildlife. Feeding geese at the beach leads to them pooping at the beach, and the poop pollutants leach straight into the lake where you and others swim! Additionally, stay in touch with your food - never leave it unattended and please use the bear lockers for all scented items while camping. Park wildlife thank you for protecting them!

## SOME NATURAL HAZARDS: THINGS TO KNOW ABOUT

Just like with any activity, there are natural hazards inherent in outdoor recreation. Knowing about hazards can help you in certain situations. Some hazards at Whiskeytown include the following...

**Hazard Trees** - Hazard trees are defined as burned trees or partially burned trees that pose a falling threat to humans and park infrastructure. While Whiskeytown employees have removed about 80,000 hazard trees since the Carr Fire, the threat of falling tree limbs and falling trees remains, especially on windy days. For this reason, the park recommends against recreating if wind speeds are greater than 10 miles per hour. And whenever you are recreating in the park, be on the lookout for falling trees and limbs - jumping away from them while they are falling could save your life.

**Rattlesnakes** - Whiskeytown is rattlesnake country. The best way to avoid a rattlesnake bite is to watch where you step, keep your hands to yourself, admire snakes from a distance, and stay on trail. If you are bit by a rattlesnake, seek medical care immediately and report the incident to a park ranger.

**Mountain Lion & Black Bear** - Whiskeytown is black bear and mountain lion country. To observe these critters in the wild can be a memorable experience, but never approach them. Additionally, keep your dog on leash to protect them from wildlife. On the rare chance that a mountain lion or black bear approaches you, try to scare it away by shouting at it, waving your hands, and throwing sticks and rocks. Do not run. Pick up small children and small pets immediately. On the extremely rare occasion that a mountain lion or black bear attacks you, fight back. Report all aggressive wildlife to a ranger.

**Poison Oak** - this native but pesky plant is found throughout the park and can cause irritating rashes and itchiness if you accidentally brush up against it or touch it. The best way to avoid poison oak is to stay on trail and avoid touching plants.



## Park Partners

Whiskeytown National Recreation Area has dozens of friends and partners. Below are some of our formal partnerships...

### FRIENDS OF WHISKEYTOWN, INC.

Friends of Whiskeytown, Inc., or FOWI, is a non-profit organization dedicated to increasing access to the park. FOWI financially supports Whiskeytown's ranger-led kayak tours and patio boat tours. FOWI also hosts several recreational programs for the public throughout the year. For more information, visit [www.friendsofwhiskeytown.org](http://www.friendsofwhiskeytown.org).

### GREAT BASIN INSTITUTE

The Great Basin Institute, or GBI, is an interdisciplinary field studies organization that promotes environmental research, education, and conservation throughout the West. This year, Whiskeytown is hosting several GBI employees to conduct native and invasive plant surveying and treatment work, in addition to environmental compliance projects.

### KIXE-TV

The Shasta County PBS affiliate station, KIXE-TV is a not-for-profit public television corporation with the responsibility of serving its viewing communities. Thanks to a new partnership between KIXE-TV and Whiskeytown, the park airs public announcement videos daily.

### NATIONAL COUNCIL FOR PRESERVATION EDUCATION

The National Council for Preservation Education, or NCPE, encourages the development and improvement of historic preservation education and endeavors in the United States. Whiskeytown employs NCPE interns to complete work related to the historic orchard, museum collections, and archives.

### SHASTA COUNTY OFFICE OF EDUCATION

Located in the southeast corner of the park below Whiskeytown Dam, Whiskeytown Environmental School, or WES, is one of the oldest residential outdoor education facilities in the National Park System. While the school is maintained by the park, student education is facilitated by the Shasta County Office of Education, or SCOE. Day camps are currently conducted for area youth at WES in spring, summer, and fall. For more information, visit [www.shastacoe.org/programs-services/whiskeytown-environmental-school](http://www.shastacoe.org/programs-services/whiskeytown-environmental-school).

### UNITED STATES COAST GUARD AUXILIARY

Established by Congress in 1939, the Coast Guard Auxiliary promotes and improves recreational boating safety. The auxiliary patrols the waters of Whiskeytown Lake and also provides support to the national recreation area's moonlight kayak programs.

### WES COMMUNITY

WES Community helps support the educational goals, natural sciences, and outdoor recreation opportunities at Whiskeytown Environmental School, or WES. WES Community contributes to the school's mission through advocacy and linking with the community, businesses and public agencies through fundraising and donations. To support WES Community and for more information, visit [www.wescommunity.org](http://www.wescommunity.org).

### WESTERN NATIONAL PARKS ASSOCIATION

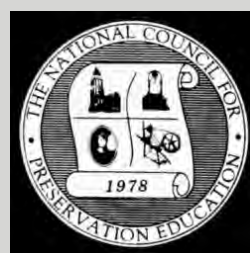
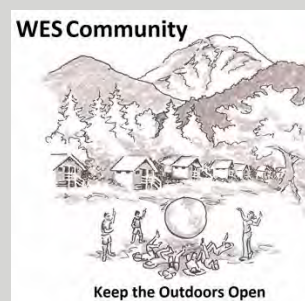
The Visitor Center bookstore is managed by Western National Parks Association, or WNPA, a nonprofit education partner of the National Park Service. Some of the proceeds in every bookstore purchase at Whiskeytown goes back to the park to help the recreation area's interpretive and educational needs. This year, WNPA funds have been used to support the park's Artist-in-Residence program.

### WHISKEYTOWN MARINAS, LLC

Whiskeytown Marinas LLC is an authorized concessioner of the park. They operate Brandy Creek Marina as well as Oak Bottom Marina including Oak Bottom's campgrounds and store. Both marinas offer slip rentals and launch ramps. Buoy moorage is available at Oak Bottom Marina; dry storage available at Brandy Creek. The Oak Bottom Marina rents fishing boats, pontoon boats, deck boats, kayaks and paddleboards year-round. Kayaks and paddleboards are available for rent at Brandy Creek Beach during the summer only. Oak Bottom Campground Store and Oak Bottom Marina Store are open year-round. For more information, please visit [www.whiskeytownmarinas.com](http://www.whiskeytownmarinas.com) or call (530) 359-2671.

### YOUTH CONSERVATION CORPS

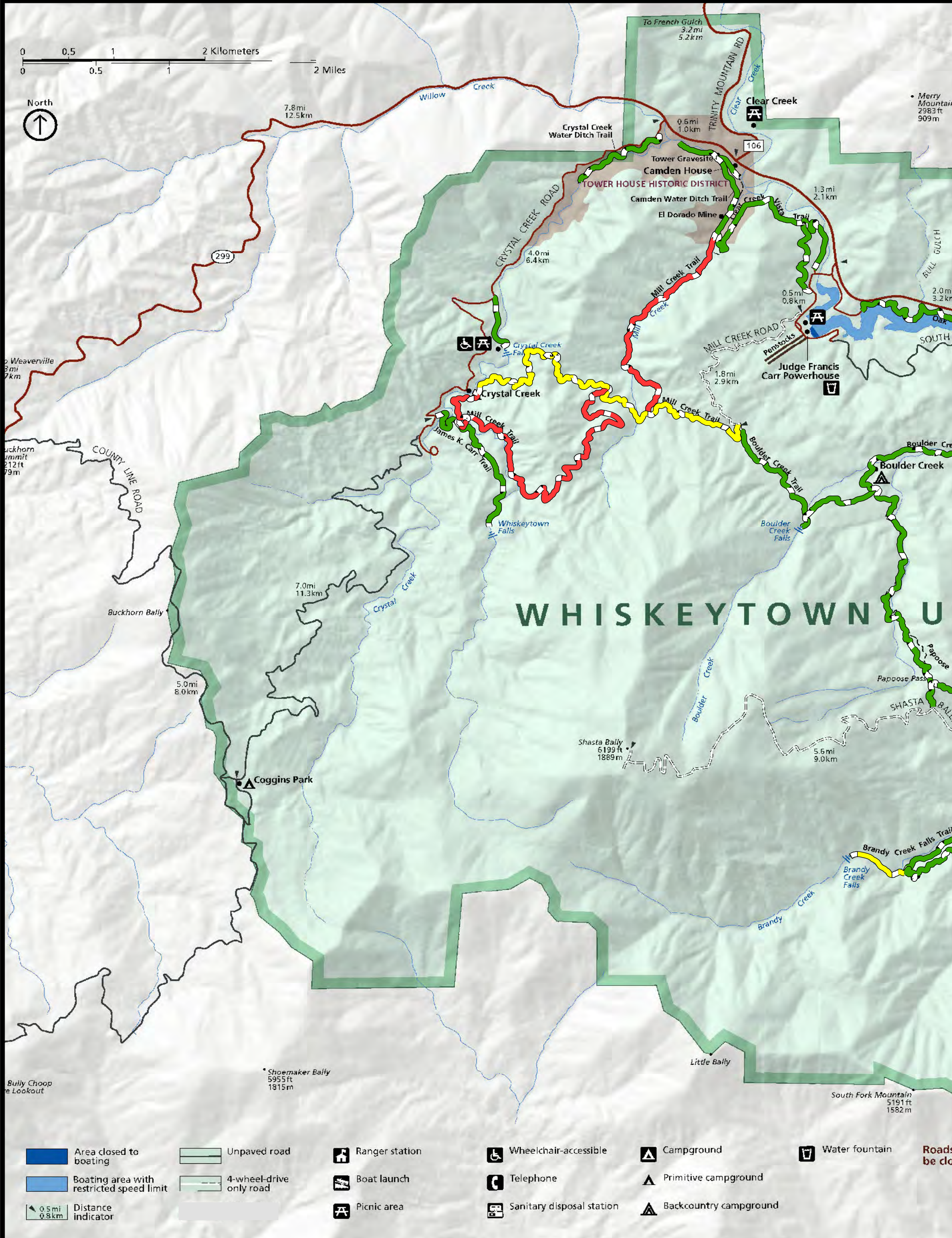
Every summer, Whiskeytown recruits, supervises, and employs a crew of local high schoolers on maintenance projects via the Youth Conservation Corps program, or YCC. The YCC is a federal summer youth employment program that engages young people in meaningful conservation and maintenance work. A goal is to develop an ethic of environmental stewardship and civic responsibility in young people. To apply, email [WHIS\\_Information@nps.gov](mailto:WHIS_Information@nps.gov).





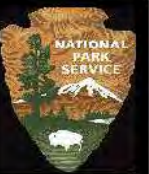
# Whiskeytown NRA

## Whiskeytown Trails Spring/Summer 2024



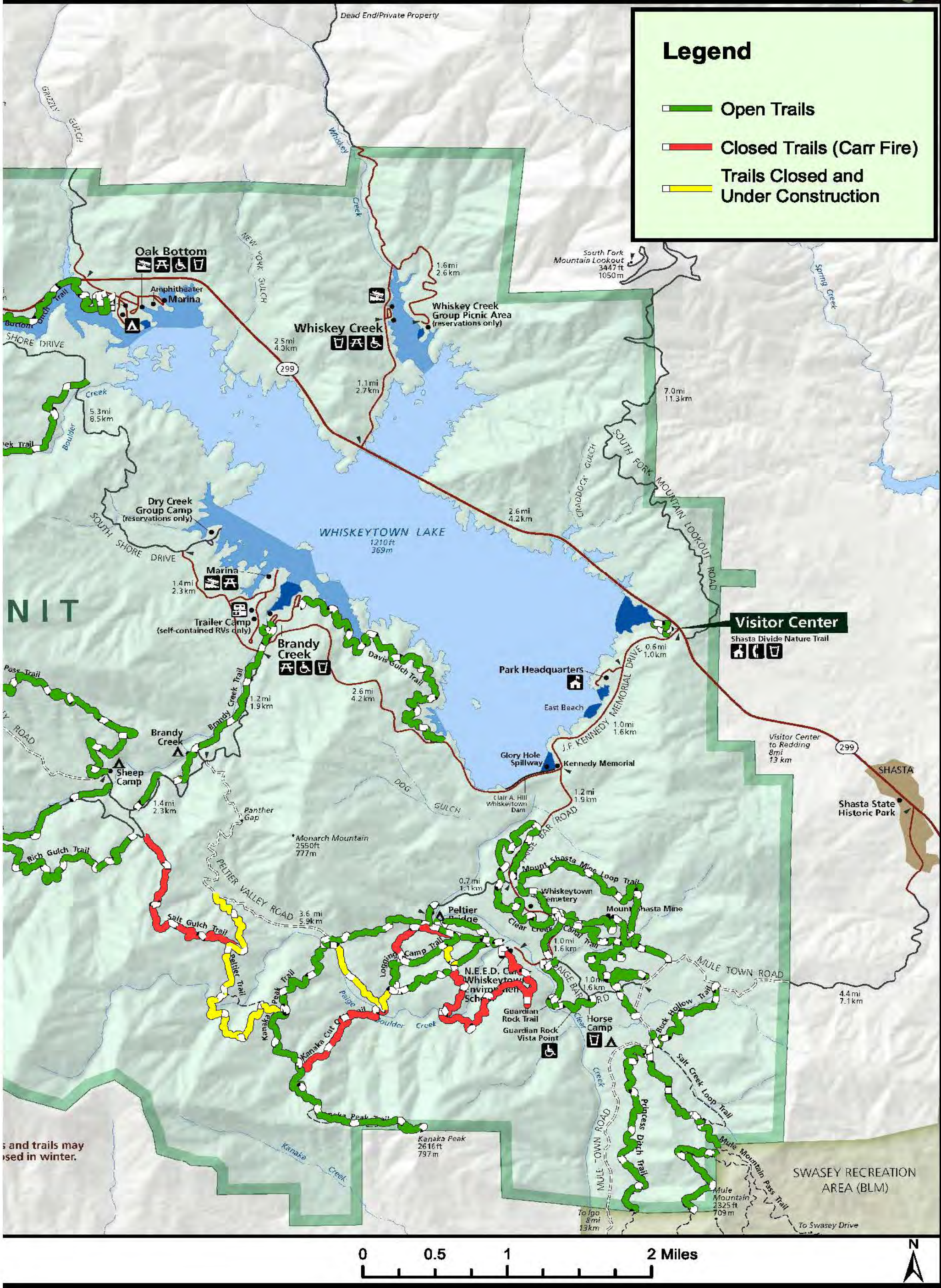


# National Park Service U.S. Department of the Interior



## Legend

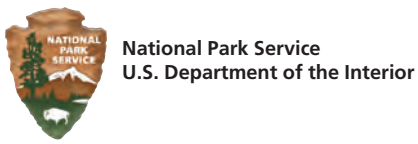
- █ Open Trails
- █ Closed Trails (Carr Fire)
- █ Trails Closed and Under Construction



and trails may be closed in winter.







# Whiskeytown Environmental School Community Leads Campaign to "Grow Back Stronger"

## NATIONAL PARK SERVICE MISSION

The National Park Service preserves unimpaired the natural and cultural resources and values of the national park system for the enjoyment, education, and inspiration of this and future generations.

## BACKGROUND ON WHISKEYTOWN NATIONAL RECREATION AREA

Whiskeytown Lake was created as part of the federal government's Central Valley Project to provide water for agricultural, municipal, and industrial use, flood control, and recreation. The dam was dedicated by President John F. Kennedy on September 28, 1963.

The 3,200-acre reservoir and 42,000 acres of surrounding habitat became Whiskeytown National Recreation Area in 1965. The park preserves and protects a diversity of flora and fauna as well as historic sites associated with the Wintu and California Gold Rush. The park provides a wide variety of year-round recreation opportunities for around one million annual visitors.

## PARK MANAGEMENT TEAM

*Superintendent* Josh Hoines

*Administrative Officer* Laura Ostmann

*Chief of Facility Management* David Larabee

*Chief Ranger (Law Enforcement)* Vacant

*Chief of Resource Management & Interpretation* Laura Shaskey

*Fire Management Officer* Jake Akerberg

*Supervisory Interpretive Park Ranger* Scott Einberger

## PARK CONTACT INFORMATION

Visitor Center: (530) 246-1225

Headquarters: (530) 242-3400

Park Dispatch: (530) 242-3431

Emergency: 911

Email: [whis\\_information@nps.gov](mailto:whis_information@nps.gov)

Website: [www.nps.gov/whis](http://www.nps.gov/whis)

Mailing Address:  
Whiskeytown National Recreation Area  
P.O. Box 188  
Whiskeytown, CA 96095

## THE WHISKEYTOWN NUGGET INFO

Editor, Scott Einberger

- For newspaper inquiries, comments, or distribution requests, email [scott\\_einberger@nps.gov](mailto:scott_einberger@nps.gov).

- All photos taken by park staff unless otherwise noted.

- *The Whiskeytown Nugget* is printed on recycled paper using soy-based (non-petroleum) ink.

## PARK FACTS

*Origin of the "Whiskeytown" Name*  
The park is named after a small California Gold Rush community whose remnants were moved or destroyed to create the reservoir.

*Highest Point:* Shasta Bally, 6,199 feet

*Lowest Point:* 860 feet on lower Clear Creek

*Park Acreage:* 42,000 acres

*Lake acreage:* 3,200 surface acres

*Lake Elevation:* 1,209 feet at full pool (May-September) and 1,198 feet during winter draw down (November-March).

*By Ellen Petrick, Whiskeytown Environmental School Community Board Member*

Whiskeytown Environmental School (WES), located within Whiskeytown National Recreation Area at the base of Shasta Bally and at the confluence of Clear Creek and Paige Boulder Creek, has served Kindergarten through 6th grade students for over fifty years. The camp was deeded to the National Park Service in 1969, and the school was launched in 1970, eventually providing overnight programs, day-long field trips, and summer camps. WES has served over 140,000 youth to date through a partnership between the National Park Service and the Shasta County Office of Education. The school is a member of the California Outdoor School Association, and is a certified Residential Outdoor Science School.

Since 2011, Whiskeytown Environmental School Community (WES Community) has existed as an official nonprofit, established to support science education at Whiskeytown Environmental School by raising donations and community awareness. The destruction wrought by the Carr Fire in 2018 caused immediate closure of the school. While day programs have since been reinstated, extensive damage to structures and infrastructure caused by fire and post-fire rains have prevented the return of students for overnight programs. Following the fire, the pandemic left many children grasping for connection with each other and the outdoors. These events propelled WES Community into a new role. In 2021, the nonprofit was approved as an official philanthropic partner of the National Park Service. WES Community is committed to building the campus back stronger, to serve the community for the next 100 years.

The Grow Back Stronger campaign aims to return children to the beloved week-long residential camp that has become a right-of-passage for fifth and sixth grade students across a nine-county region. WES Community believes that all children should have the opportunity to experience growth and transformation through place-based science education while hiking, stargazing, and exploring Whiskeytown's creeks. WES Community invites you into this shared vision to bring children back to WES, back into the outdoors, and back into relationship with nature and each other.

Thanks to the generosity of numerous businesses, civic groups, foundations, and individuals, WES Community raised over 4 million dollars in 2023. As the campaign now approaches its public phase, your help is needed! Please join the effort to return children to WES. To explore how you can help, and to see the latest plans for student housing, teacher housing, a safety and administration building, and an improved amphitheater, please visit <https://www.wescommunity.org/rebuilding-plans/>, or email [wescommunityinfo@gmail.com](mailto:wescommunityinfo@gmail.com), or call WES Community President Melinda Kashuba, 530-440-5584.



Top Photo: Whiskeytown Environmental School cabins burned and destroyed during the Carr Fire. Second and third photo: campers at WES.

## What on earth are we creating for our children?

- the saying on the back of WES t-shirts.

### WES Community



Keep the Outdoors Open



# Person of the Park: Mary Nowak, Budget Analyst

To help you as a visitor and lover of Whiskeytown understand what each park employee does, The Whiskeytown Nugget spotlights a different park employee each year. This year, we want to introduce you to Mary Nowak, our Budget Analyst. A resident of Redding since 2002, Mary has been at Whiskeytown for 12 years. Learn more about Mary below...

1. How did you start at Whiskeytown?

*"I started in the Maintenance Division in 2012 as a seasonal employee and was hired on through the Pathways student program in the Administrative Division. I have worked in the Administrative Division for 11 years, working my way up from Budget Technician to the Budget Analyst."*

2. As a Budget Analyst, what does your work consist of?

*"My job as the Budget Analyst is to assist in planning, formulating, executing and tracking the operational budget of the National Park Service for Whiskeytown National Recreation Area. Whiskeytown's operational budget for FY24 is \$4,789,000."*

*"The National Park Service develops a budget each February for the next fiscal year (FY), which starts October 1. Our budget—published in what we call the Green Book—defines our goals and objectives and the funding necessary to accomplish them. The National Park Service budget is rolled up into the budget for the Department of the Interior and then with the rest of the Executive Branch and submitted to Congress for its review and approval."*

3. Why is planning, formulating, executing, and tracking money spent on our operating budget important?

*"The planning and formulating helps us be as financially responsible as possible. The tracking is also required by Congress and the President."*

4. Mary, you said that \$4,789,000 is our annual operating budget for Whiskeytown. What does that money pay for?

*"Around 80% of our operating budget pays for permanent staff wages and the other 20% pays for supplies and services including utilities, vehicles, water treatment, etc. The entire Administration staff helps with the budget by processing payroll, paying bills, processing purchase orders, accounting for property and tracking vehicle utilization."*

*"Every division at Whiskeytown works together as a team to make sure we plan and track the budget so that we stay on course and are able to accomplish and account for all that we planned. We do make adjustments as necessary."*

5. Thanks Mary. I think it's really important for the public to know that 80% of our operational budget goes to staff salaries (and none of us are rich!) rather than park infrastructure projects. This begs the question though about how we get money for other park needs that the Congressionally authorized budget does not pay for. How do we get that extra money? Where does it come from?

*"In addition to the base funding appropriated by Congress, Whiskeytown expends up to an average of \$6 million in project funding annually. These funds include construction, equipment replacement, rehabilitation, cyclic, recreation fee, line item, disaster relief and environmental improvement projects. These funds are expended from one to three years and each fund source has specific guidelines and criteria. We compete with all the other units of the National Park System for most of these fund sources. One exception though is Recreation Fee. All Whiskeytown entrance pass and campground revenue gets recycled back into the park to enhance the visitor experience. So, thank you for paying your entrance pass or "Recreational Fee."*

6. And as you mentioned, park partners are also an important fund source. To see a list of some of our partners and learn what they do, visit the gray box on page five. Mary, one final question for you... What is your favorite thing about working at Whiskeytown?

*"My favorite thing about Whiskeytown is being able to come to work every single day at a national park. I mean, how many people get to do that!?"*

*"Besides that, my favorite feature of the park is the lake; I love paddleboarding and swimming. I absolutely love Brandy Creek and Oak Bottom as well as many of the coves around the lake."*

*"I also love to walk in the park with my daughters Christina and Rachel, and my dog Chase. So far, Chase and I have explored together Whiskeytown Falls, Oak Bottom Water Ditch Trail, Davis Gulch Trail and Lower Brandy Creek Falls Trail. During our Whiskeytown Falls hike, we came across a CalFire work crew; Chase is super friendly and he stopped to greet every firefighter we passed on the way down from the waterfall. A goal this year is to get to the top of Kanaka Peak."*

*"I have ridden my mountain bike on the Oak Bottom Water Ditch Trail and the Mount Shasta Mine Loop Trail (before the fire). I often bring my road bike to work so that on my way home I can enjoy many of the great trails in the area such as the Rock Creek Trail and the Sacramento River Trail, particularly Diestelhorst Bridge to the Stress Ribbon Bridge and the Sundial Bridge."*

Thank you for your service to Whiskeytown National Recreation Area, Mary.



Whiskeytown's Budget Analyst, Mary Nowak, in the office (left) and at the base of Whiskeytown Falls (right) with her faithful companion Chase, an Akbash dog breed.



# Seeking Employment at Whiskeytown? Here's What You Need to Know

By Scott Einberger, Interpretation Supervisor

I would like to preface this article by stating that we highly encourage locals and diverse candidates to seek employment in the park. In fact, most employees here at Whiskeytown were born and raised in the local area.

A second preface is that this article is mostly about seasonal employment, or jobs that last spring to fall and are recurring on an annual basis. While our permanent positions are also advertised, seasonal ones are much more regular and common.

If you have never had a job with the National Park Service, seeking out a seasonal job can seem daunting. The good news is that this article has been written to help you navigate the USAJOBS website. We want to help you make your application the strongest it can be so that you have the highest chance possible of landing a job here at Whiskeytown National Recreation Area or at one of the other approximately 430 parks and monuments comprising the National Park System of the United States.

If interested in summer employment at Whiskeytown, you need to know that jobs for the following summer are advertised from October to December the year before. In other words, if you are seeking employment for a seasonal job in 2025, you should go onto <https://www.usajobs.gov> twice a week and search for jobs in October, November, and December of 2024.

USAJOBS is generally the one stop shop for all federal jobs. Essentially all jobs are announced on USAJOBS and all applications are received and processed on USAJOBS.

So, you go onto <http://usajobs.gov>. How do you search for jobs you are interested in? In the Search box towards the top of the page, you could type in "Whiskeytown" if you are seeking a job here specifically, or, depending

on your interest and background, you could type in the specific job title. By the way, the table at right lists Whiskeytown jobs we hire for annually.

So now you are looking at a list of jobs that are available on USAJOBS. Click on one that peaks your interest, and then read, read, read that job announcement. Seriously, it's easy to miss a small requirement specified on the job announcement, so reading every section thoroughly is critical.

To apply for a job, you'll need to create a profile for yourself in USAJOBS. You will also need to create a resume listing your work experience in detail. You can create a resume using the USAJOBS template inside your profile, or you can create your own resume and then upload it.

The Help Center webpage on USAJOBS is a fantastic resource if you are new to the website and/or this application and hiring process. The Help Center webpage can be accessed by clicking on the words "Help Center" at the top right corner of the USAJOBS webpage. If you are a veteran or have a learning, physical, or psychiatric disability, you might do some Help Center searches to see how you can gain special hiring authority.

With your job application, take your time, go slow, be thorough, and pay close attention.

What questions do you have? How can we help you with your application? Feel free to email me at [WHIS\\_Information@nps.gov](mailto:WHIS_Information@nps.gov).

## SEASONAL JOBS AT WHISKEYTOWN

### GS-0025-05 Park Ranger (General)

A position within the park's Law Enforcement Division, we try to hire four "Generals" that spend the summer roving park beaches and other day use areas, informing visitors of rules and providing information about the park. "Generals" also provide emergency medical services as needed. For anyone interested in going into a career in law enforcement or public safety, this is a great introductory job. \$16.95 per hour for GS-04; \$18.96 per hour for GS-05.

GS-0404-04/05/06 Biological Science Technician The park's Resource Management Division hires around five "Bio Techs" per summer to carry out invasive plant management tasks including surveying, mapping, and treating invasive plants. Work involves a lot of off-trail hiking in rugged terrain. \$16.95 per hour for GS-04; \$18.96 per hour for GS-05; and \$21.14 for GS-6.

GS-0456-03/04/05 Wildland Firefighter Whiskeytown's Fire Management Division hires six seasonal Wildland Firefighters each summer to support local, state and national efforts in the areas of wildland and prescribed fire management. When not on an incident, these positions complete fitness training and other tasks. \$15.10 per hour for GS-03; \$16.95 per hour for GS-04; \$18.96 per hour for GS-05. Additional Overtime pay, Hazard pay, and Retention Bonus available.

WG-4 Motor Vehicle Operator, WG-5 & WG-6 Maintenance Worker (Routine) Whiskeytown's Maintenance Division seeks to hire 12 total Routine Maintenance Workers each summer season. These positions are responsible for the upkeep of visitor use facilities and conduct trash removal, restroom cleaning, and grounds work assistance on a daily basis. \$19.69 per hour for WG-4, \$21.44 per hour for WG-5, and \$23.13 per hour for WG-6.

WG-5 Maintenance Worker (Trails) Whiskeytown hires four Trail Workers each summer to perform arduous trail maintenance work utilizing chainsaws, motorized wheelbarrows and hand tools. \$21.44 per hour.

WL-7 Maintenance Worker Leader Whiskeytown seeks to hire two Maintenance Work Leaders each summer. These positions are responsible for leading and overseeing crew members and volunteers of various trades on operational tasks and projects. Maintenance Worker Leaders work closely with their supervisors. \$27.41 per hour.

WG-8 Engineering Equipment Operator Whiskeytown hires two Engineering Equipment Operators each summer to operate and maintain heavy equipment and complete tasks including road grading, mechanical thinning, utility line digging, and equipment hauling. \$26.74 per hour.

GS-0193-07 Archeologist  
Note: this position is actually a winter seasonal position. The Archeologist assists in managing cultural resources of the park by conducting site condition assessments, monitoring, database management, and Section 106 reviews. Project work is highly variable with opportunities to work with park partners, contractors, and volunteers. Some fieldwork is required. \$23.49 per hour.

Youth Conservation Corps Crewmember Every May, Whiskeytown hires six young adults between the ages 16 to 18 to complete various maintenance projects across the park and explore National Park Service careers. YCC crewmembers are paid \$16.00 per hour. To apply or for more information, email [WHIS\\_Information@nps.gov](mailto:WHIS_Information@nps.gov).



Top left: Whiskeytown wildland firefighters conducting pile burning operations off of Paige Bar Road in March 2024. Above: a Whiskeytown National Recreation Area biological science technician documenting an invasive plant in the park's backcountry. Below left: general park rangers help uphold park rules and regulations by informing visitors.



# Your Entrance Pass Dollars at Work!

By David Larabee, Chief of Facility Management

Thank you for supporting Whiskeytown National Recreation Area! The revenue gained from your entrance pass and campground reservations are critical for the maintenance and operations of the park. The entrance pass program, known as the Recreation Fee or Rec Fee program, is a crucial initiative in preserving and enhancing the remarkable experiences that our nation's parks have to offer. Embracing the motto "your fee dollars at work," the Rec Fee program channels your contributions directly into targeted improvement projects, significantly fostering a deep and lasting connection between visitors and the natural, cultural, and historical wonders that characterize our national parks. Below is a list of current Rec Fee projects underway and scheduled work this year at Whiskeytown:

- Improving accessibility at the Crystal Creek Falls Picnic Area.
- Completing rehabilitation and improvements to Whiskey Creek Group Picnic Area and Beach. This area was largely destroyed by the Carr Fire and site improvements will include accessibility, shade structures, and new amenities.
- Renovating the park's Visitor Center to allow for better visitor flow, additional space for educational retail items, and increased accessibility.
- Providing visitor use areas parkwide with custodial cleaning and solid waste/recycling services.
- Re-decking of the Willow Creek Bridge in the Tower House Historic District.
- Repairing and renovating the Mill Creek Trail.
- Maintaining vegetation along creeks and trails to improve visitor access using California Conservation Corps (CCC) crewmembers.



Park staff clearing Boulder Creek Falls Trail. Trail restoration is partially funded by your entrance pass.



A Routine Maintenance Worker sorting aluminum cans at the park's recycling center. Your entrance pass revenue funds employees to collect trash and recycling from around the park.

## Plan Like a Park Ranger for a Safe Day on the Water

By Tyler Compton, Interpretive Park Ranger

During hot summer months, floating on Whiskeytown Lake in your preferred boat or vessel can be fantastic. Unfortunately, if you are not prepared properly, a relaxing day on the water can turn upside down quickly. Use these tips to plan like a ranger for a safe day on the lake.

**LIFEJACKETS** – Personal Floatation Devices (commonly known as lifejackets) will save your life. U.S. Coast Guard regulations require PFDs be available for every person onboard a vessel, with a minimum ratio of one lifejacket per person. *Kayaks, canoes, and paddleboards must follow this regulation too!* California state law also requires children 12 and under to wear a lifejacket at all times while onboard a vessel.

**PLAN FOR THE WEATHER** – Anytime you are headed out on the water you should look at the forecast beforehand. Typically in the summer here you see high temperatures and lots of sun. On these 100°F (37°C) days water and sun protection are important. Bring plenty of drinking water to keep you hydrated and don't forget to drink it. On a hot day jumping into the lake or a creek is a great way to cool off. Staying out of the sun is equally important. This can be done with a wide brim hat, a shady tree and of course sunscreen.

While the weather is usually wonderful, be prepared for wind and choppy waves. Furthermore, if you arrive at the boat launch but see whitecaps on the water, that means that the winds are too dangerous and you should not launch your vessel.

**CHANGING LAKE LEVELS** – The water level in Whiskeytown Lake changes throughout the year to meet the various demands of power generation, cold water for native fish species, and more. This means that summer hazards and shoals are very different than those in winter. The level changes by nearly 12 feet as it rises in April and lowers in October. This year in particular, be alert for floating debris. Slow down!

**KNOW WHERE TO GO** – Nearly the entire lake is open to boaters, but there are a few important restrictions. Much of the area between Brandy Creek Beach, Marina and the islands is a no wake zone and the

same goes with Oak Bottom and the Whiskey Creek arm. All hard-sided vessels are prohibited from being in the designated swim areas. A final important location is the buoyed off area in front of Carr Powerhouse. *This area is not safe for boating, swimming, playing, or wading due to sudden increases in dangerously cold fast-moving water. Pets should not be allowed in the water around Carr Powerhouse and should be kept on a leash at all times.*

**BE KIND TO EACH OTHER** – Many great areas of Whiskeytown can become incredibly busy on a summer morning. Places like the smaller Whiskey Creek boat ramp often fill up quickly, while the much larger Brandy Creek Marina launch ramp will usually have more space. If your preferred area is full, it's a good time to go rediscover and explore a different area of Whiskeytown.

**DON'T TRY TO GET CREATIVE WITH PARKING** – all vehicles and trailers must be in a designated parking spot. Parking outside of designated areas creates hazards along roadways and makes travel especially difficult for large emergency vehicles.

**WHEN YOU GET TO THE BOAT RAMP, BE READY** – While the boat ramps are for everyone to use, please launch quickly. The launch area can get backed up quick. This applies to all vessels being launched, from patio boats to paddle boards. However, not everyone is a veteran ramp user, so be friendly and patient; maybe offer someone a hand if it looks like they could use some help!

**CALIFORNIA BOATER CARD** - This card is currently required for all operators of motorized boats aged 60 or younger. The card is issued by the California State Parks Division of Boating and Waterways. To obtain the card, visit [www.californiaboatercard.com](http://www.californiaboatercard.com).

Hopefully all these ideas serve as a good reminder on how to have a fun and successful day. All of the staff at Whiskeytown National Recreation Area want you to have a safe and enjoyable time so you can continue visiting Whiskeytown well into the future.