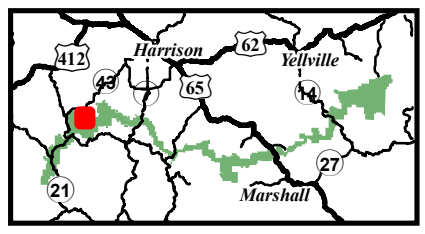
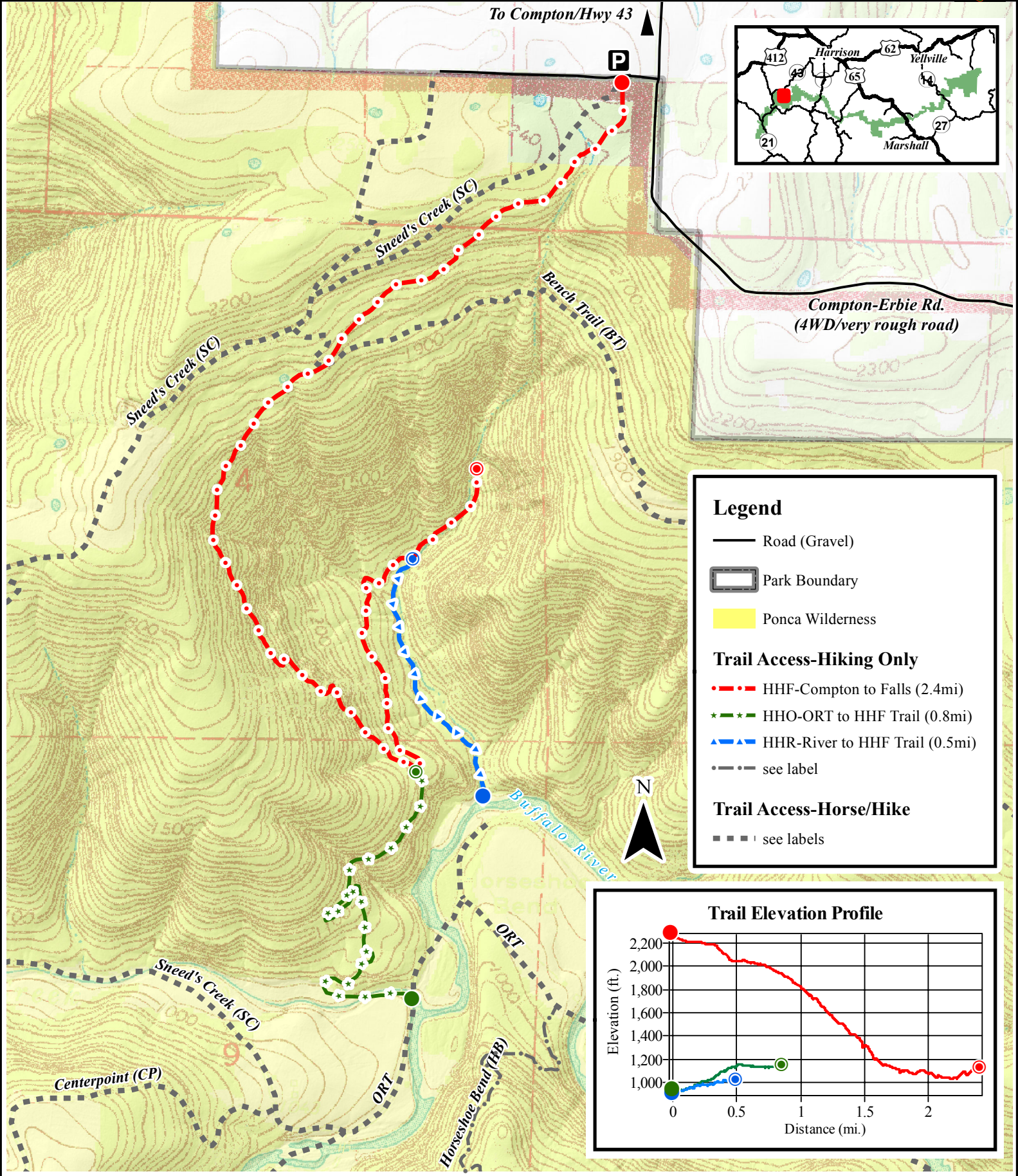


# Buffalo National River

Hemmed In Hollow Trails (HHF, HHR, HHO)

National Park Service  
U.S. Department of the Interior



Compton-Erbie Rd.  
(4WD/very rough road)

**Legend**

- Road (Gravel)
- ▭ Park Boundary
- Ponca Wilderness

**Trail Access-Hiking Only**

- HHF-Compton to Falls (2.4mi)
- \*•• HHO-ORT to HHF Trail (0.8mi)
- ▲•• HHR-River to HHF Trail (0.5mi)
- see label

**Trail Access-Horse/Hike**

- see labels

