

NATIONAL HISTORIC LANDMARKS COMMITTEE REPORT AND PRESENTATION

Joe Emert, Chair
National Historic Landmarks Committee

Joy Beasley, Associate Director
Cultural Resources, Partnerships, and Science

Sherry Frear, Chief
National Register of Historic Places and
National Historic Landmarks Program

Patty Henry, Senior Historian
National Historic Landmarks Program



EXPERIENCE
YOUR
AMERICA

National Park Service



EXPERIENCE
YOUR
AMERICA

Grant Cottage

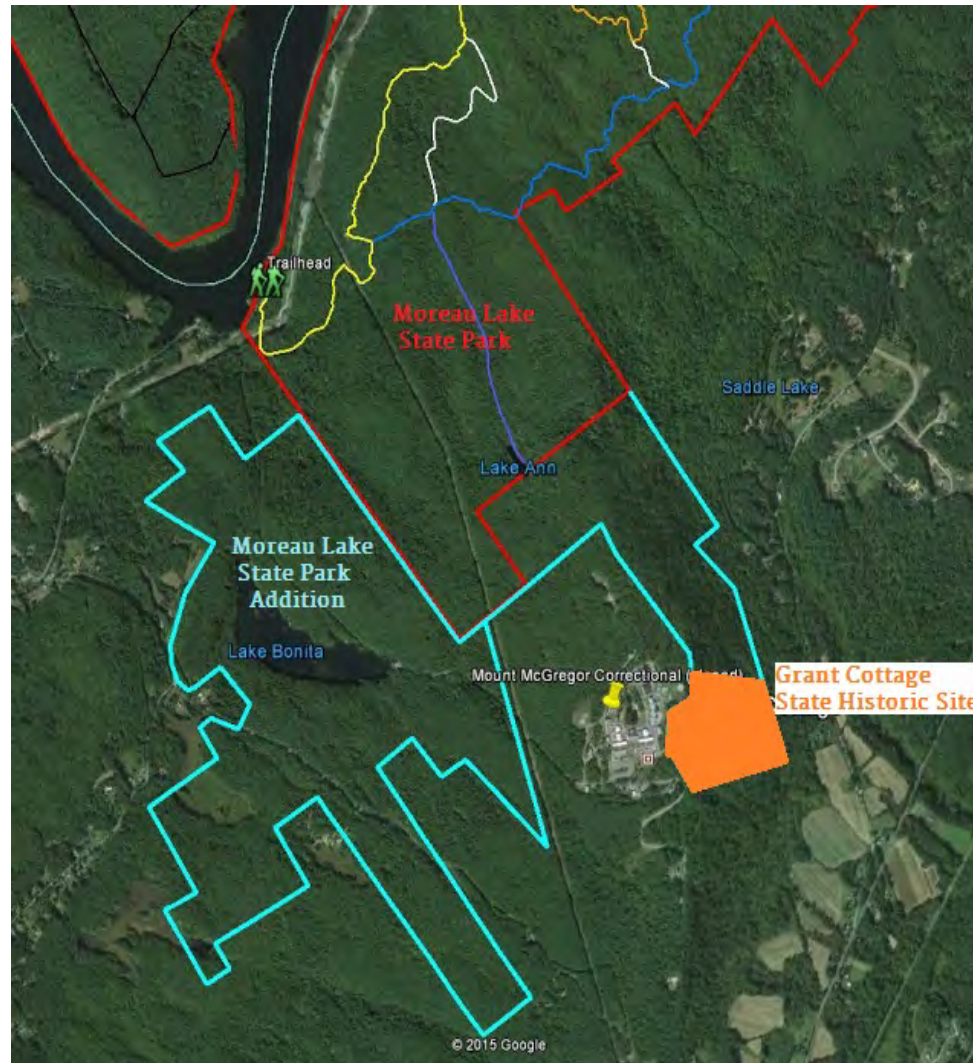
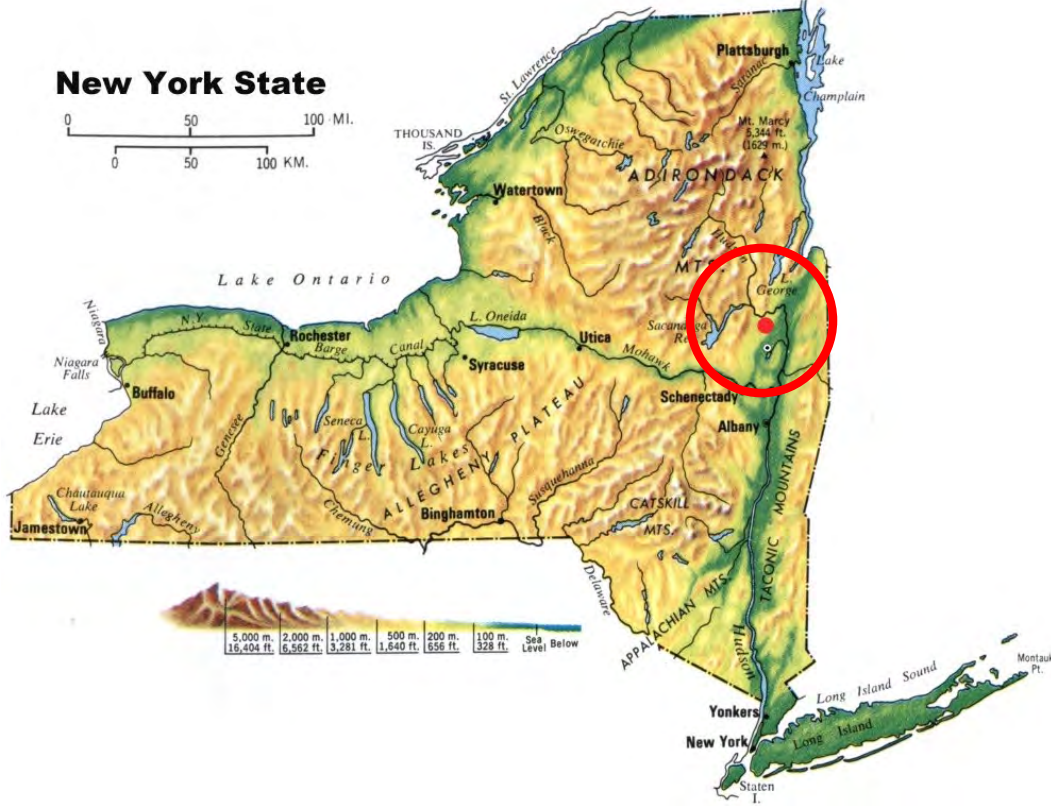


Wilton, New York

Location: Wilton, New York, north of Saratoga Springs



EXPERIENCE
YOUR
AMERICA



NHL Criteria and Theme

NHL Criteria: 1 (events)

2 (person)

NHL Theme: III. Expressing Cultural Values

2. Literature

IV. Shaping the Political Landscape

3. Military



EXPERIENCE
YOUR
AMERICA



Grant's publisher, Samuel Clemens / Mark Twain



Lithograph of Grant dying in his bed

Period of Significance and Acreage

Period of Significance: 1885

Acreage: 53 acres



Historic and current views of Grant Cottage



EXPERIENCE
YOUR
AMERICA

Residences Associated with Grant



EXPERIENCE
YOUR
AMERICA



Grant Birthplace
Georgetown, Ohio
1822, NRHP



Grant Boyhood Home
Georgetown, Ohio
1823-1839, NHL



White Haven
St. Louis Co., Missouri
1854-1859, NHL



Grant Home
Galena, Illinois
1865-1880, NHL



Grant 's Tomb
New York, New York
Posthumous, NHS



Grant Cottage, Long Branch, New Jersey, June-September 1884
DEMOLISHED



3 East 66th Street, New York, October 1884-May 1885
DEMOLISHED



Grant Cottage, Wilton, New York
June-July 1885, NRHP

National Park Service



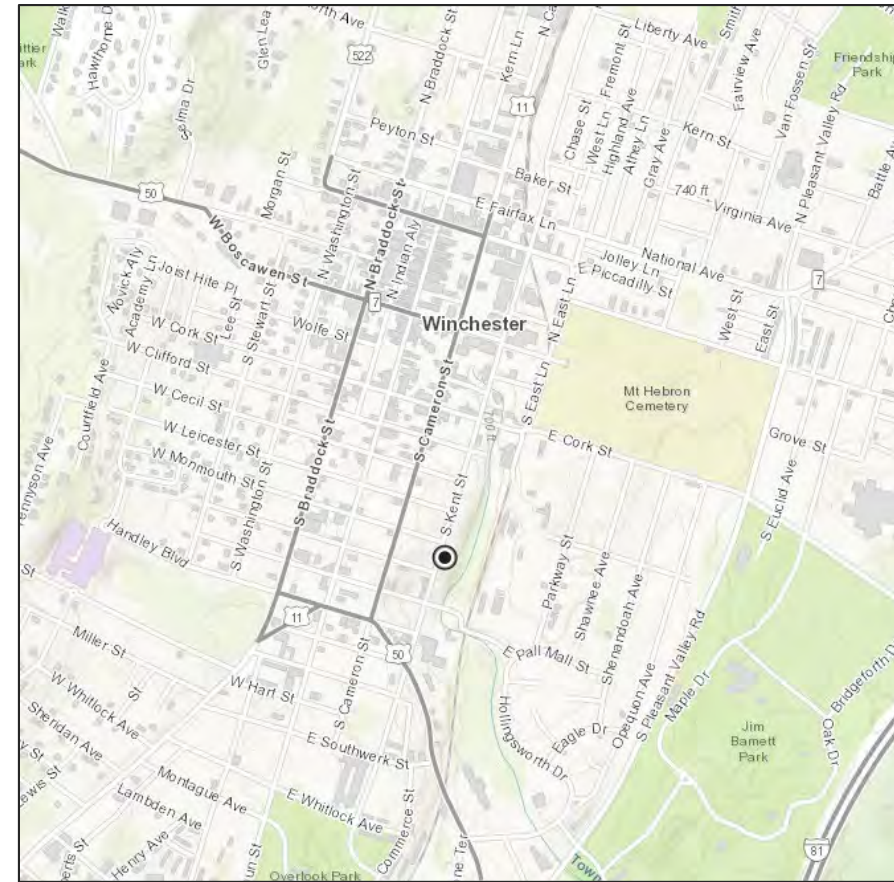
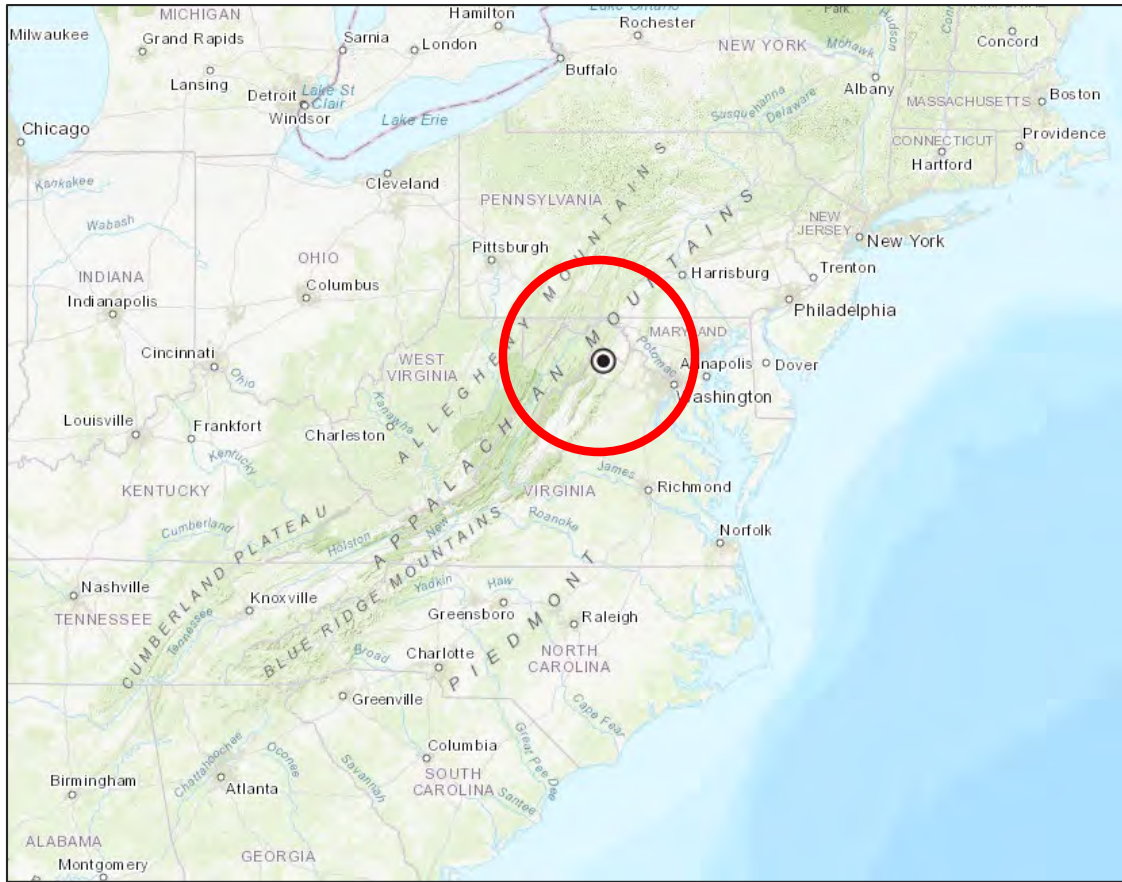
EXPERIENCE
YOUR
AMERICA

PATSY CLINE HOUSE



Winchester, Virginia

Location: Winchester, Virginia



608 South Kent Street, Winchester, Virginia



EXPERIENCE
YOUR
AMERICA

NHL Criteria and Theme

NHL Criteria: 1 (events)(development of country music)

2 (person)(Patsy Cline, 1932–1963)

NHL Theme: Women's History Initiative

III. Expressing Cultural Values

2. Visual and Performing Arts



EXPERIENCE
YOUR
AMERICA

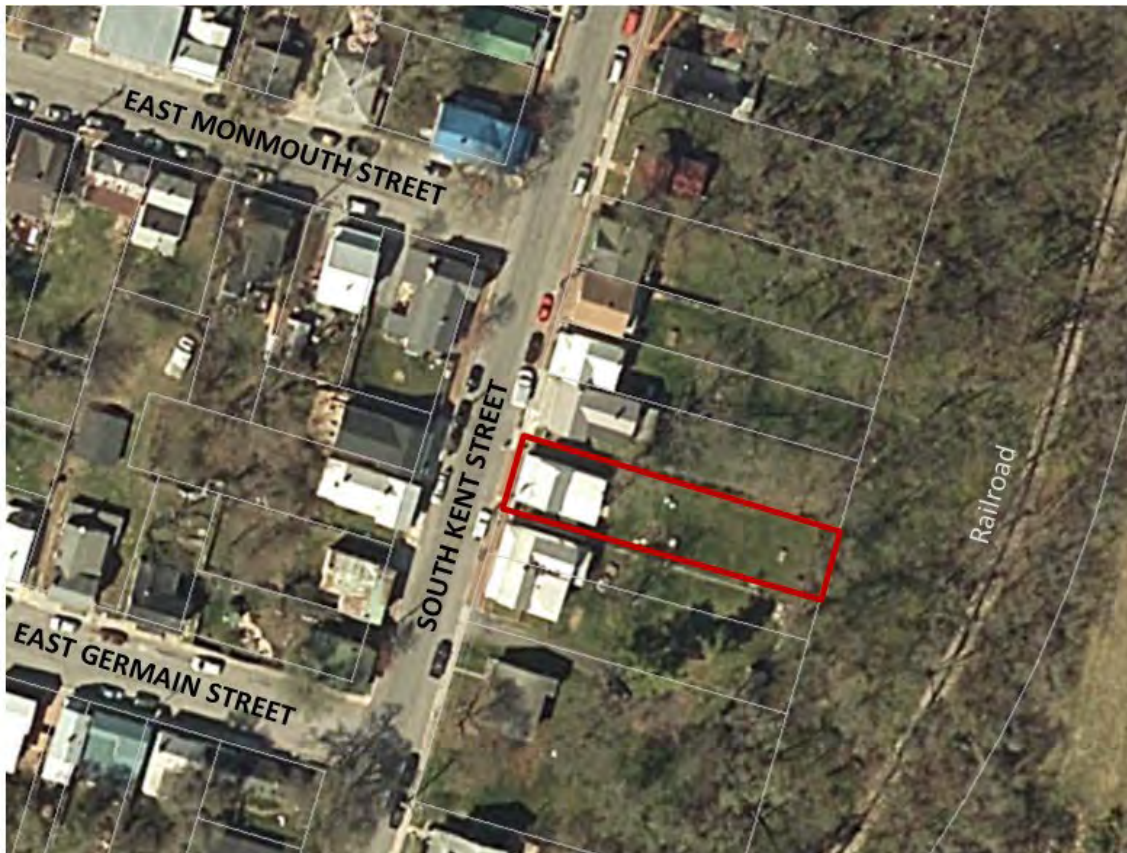


Virginia Hensley (Patsy Cline) in front of 608 South Kent Street, circa 1950

Period of Significance and Acreage

Period of Significance: 1948–1957

Acreage: 0.17 acres



NHL boundary



Before and after renovation



EXPERIENCE
YOUR
AMERICA

National Park Service



Andalusia Farm (Flannery O'Connor Home)



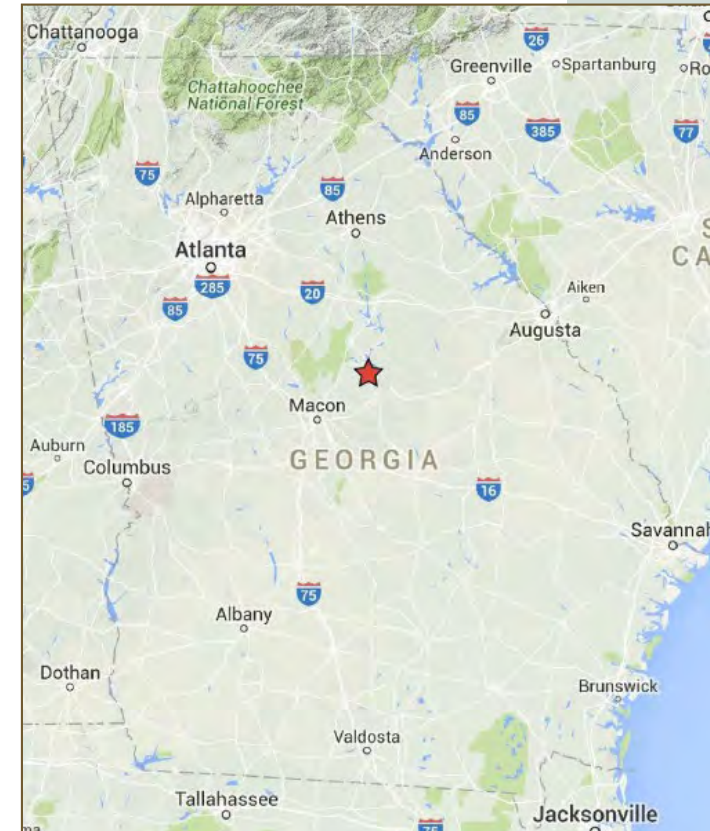
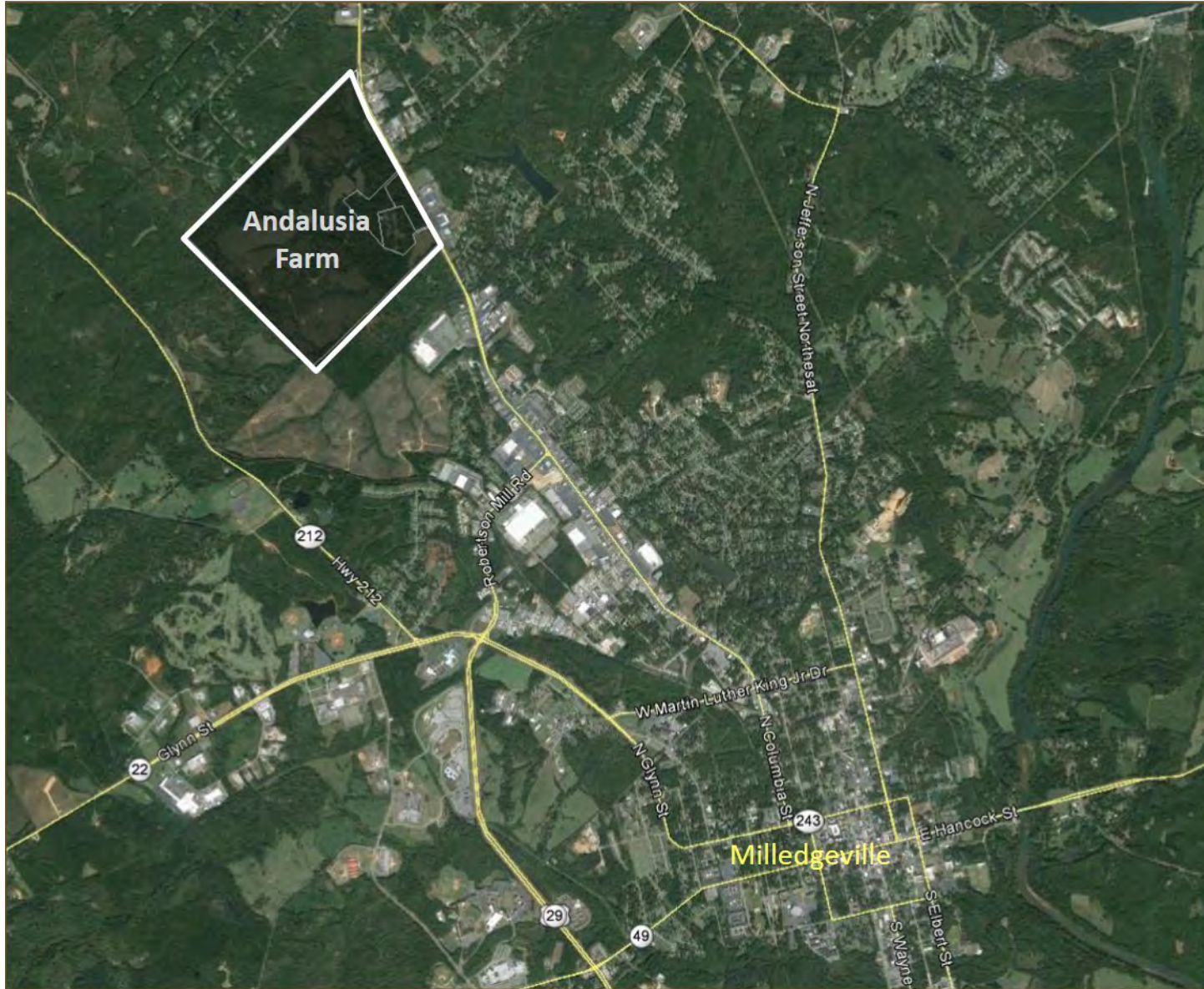
EXPERIENCE
YOUR
AMERICA

Milledgeville, Baldwin County, Georgia

Location: Milledgeville, Georgia



EXPERIENCE
YOUR
AMERICA



NHL Criteria and Theme

NHL Criteria: 2 (person)(Flannery O'Connor, 1925-1964)

NHL Theme: Women's History Initiative
III. Expressing Cultural Values
3. Literature



EXPERIENCE
YOUR
AMERICA



O'Connor at Andalusia, with two of her pet peacocks

Period of Significance and Acreage

Period of Significance: 1951-1964

Acreage: 544 acres



O'Connor at Andalusia, beneath a self-portrait



Andalusia Farm Complex



EXPERIENCE
YOUR
AMERICA

National Park Service



Scout's Rest Ranch Headquarters



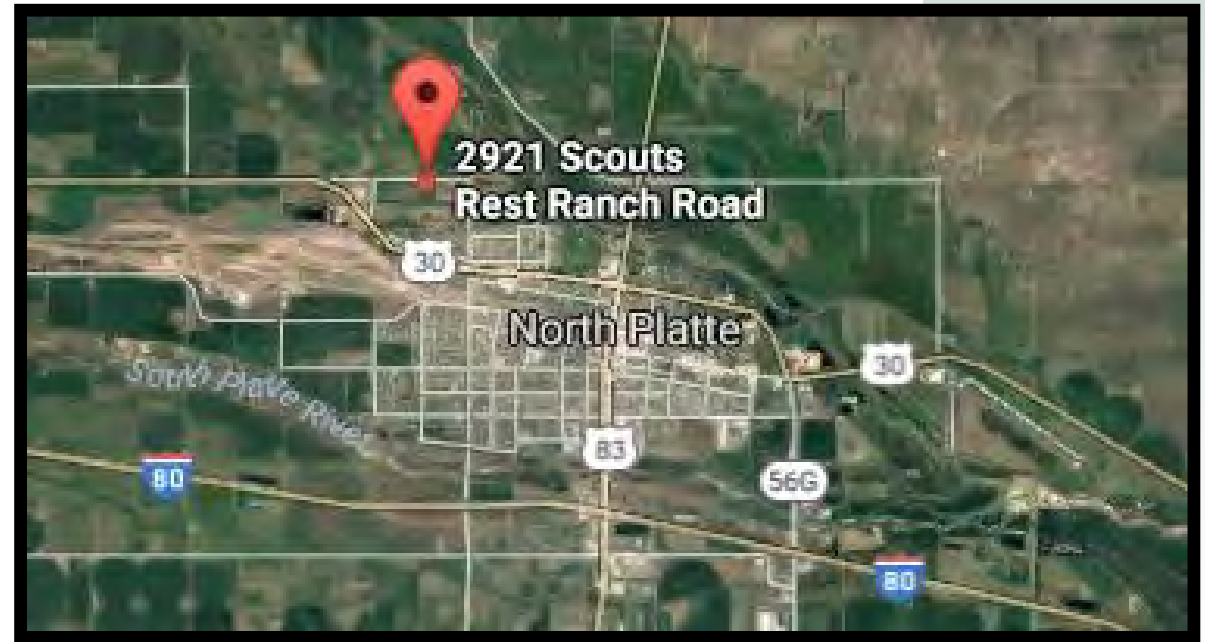
North Platte, Nebraska

EXPERIENCE
YOUR
AMERICA

Location: North Platte, Nebraska



EXPERIENCE
YOUR
AMERICA



NHL Criteria and Theme

NHL Criteria: 1 (events), 2 (persons)

NHL Theme: II. Creating Social Institutions and Movements

4. recreational activities

III. Expressing Cultural Values

2. visual and performing arts

6. popular and traditional culture



William F. "Buffalo Bill" Cody, c. 1909



EXPERIENCE
YOUR
AMERICA

Period of Significance and Acreage

Period of Significance: 1886-1913

Acreage: 8.25 acres



EXPERIENCE
YOUR
AMERICA



Resources



Ranch House, east elevation, 2014



First floor horse stalls, Horse Barn, 2015



Horse Barn, east elevation, 2015



Landscape, 2015



EXPERIENCE
YOUR
AMERICA



First Presbyterian Church



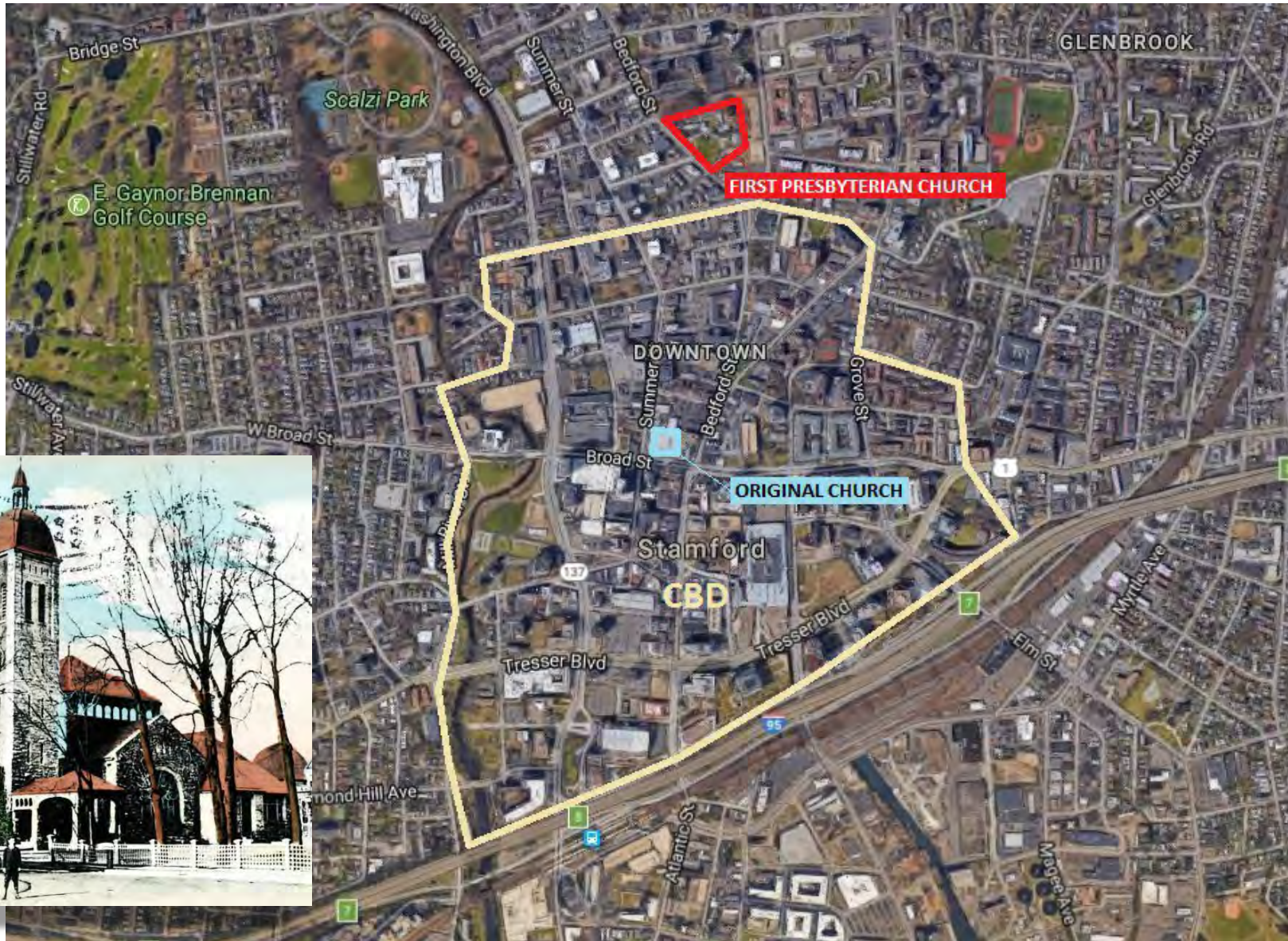
Stamford, Connecticut

EXPERIENCE
YOUR
AMERICA

Location: Stamford, Connecticut



EXPERIENCE
YOUR
AMERICA



NHL Criteria and Theme

NHL Criteria: 4 (architecture)

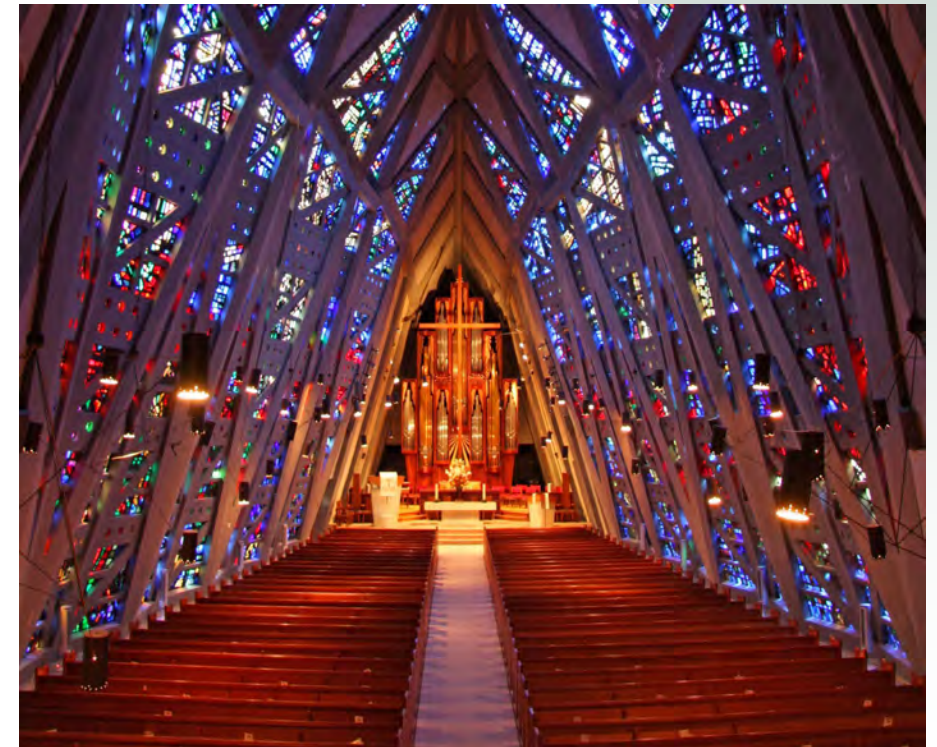
NHL Theme: III. Expressing Cultural Values

2. Visual and Performing Arts



EXPERIENCE
YOUR
AMERICA

*Have you ever thought what it would be like to live inside a giant sapphire?
architect Wallace K. Harrison*

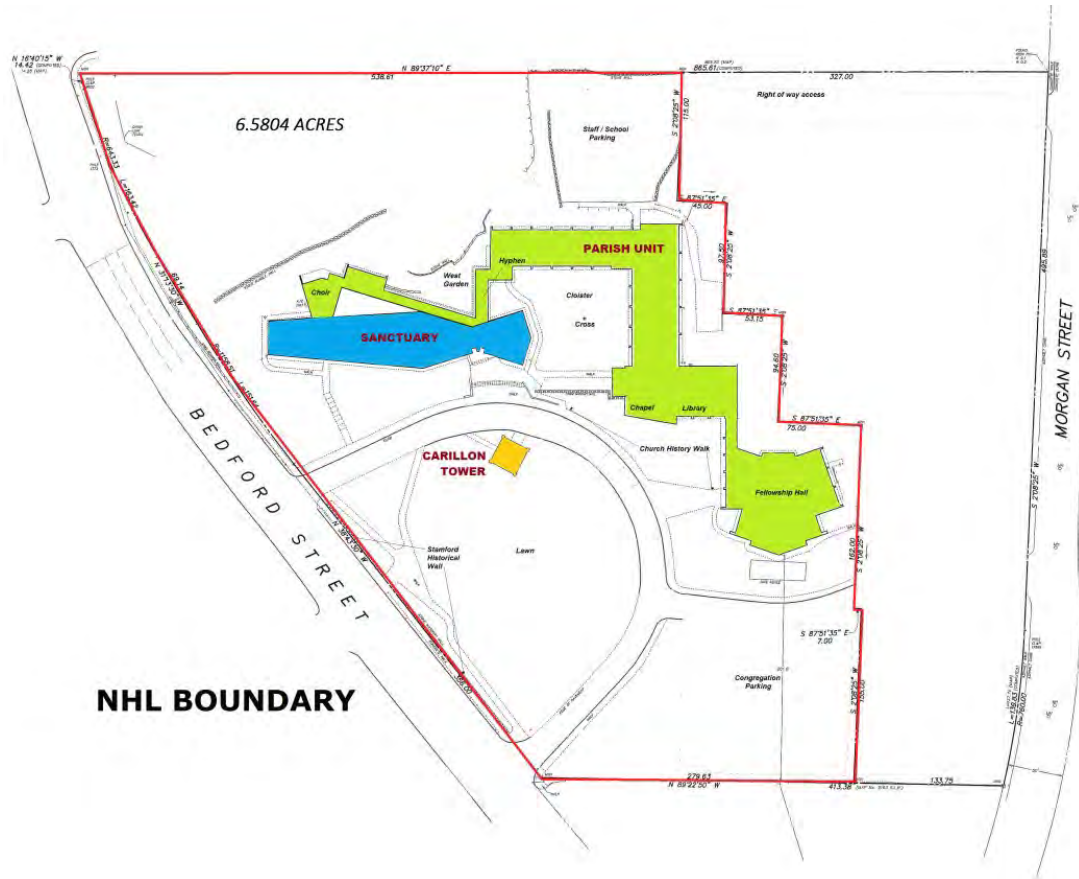


Interior view

Period of Significance and Acreage

Period of Significance: 1956-1958, 1968

Acreage: 6.58



1958, top; 2017, bottom



EXPERIENCE
YOUR
AMERICA

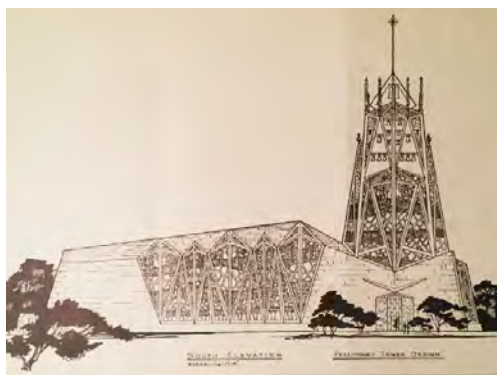
Sanctuary Complex, period of significance 1956-1958



EXPERIENCE
YOUR
AMERICA



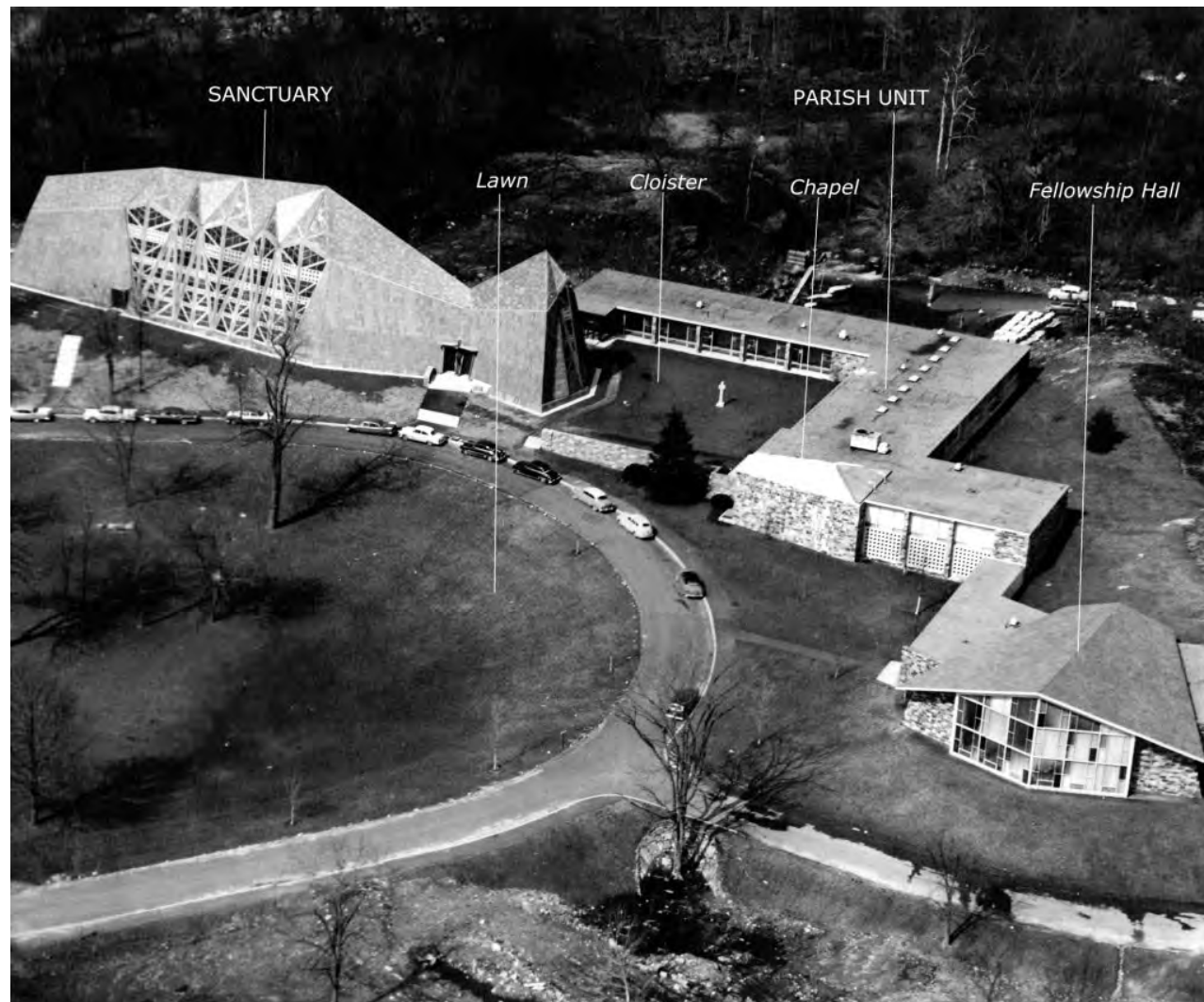
1953 scheme



1956 scheme



1957 scheme

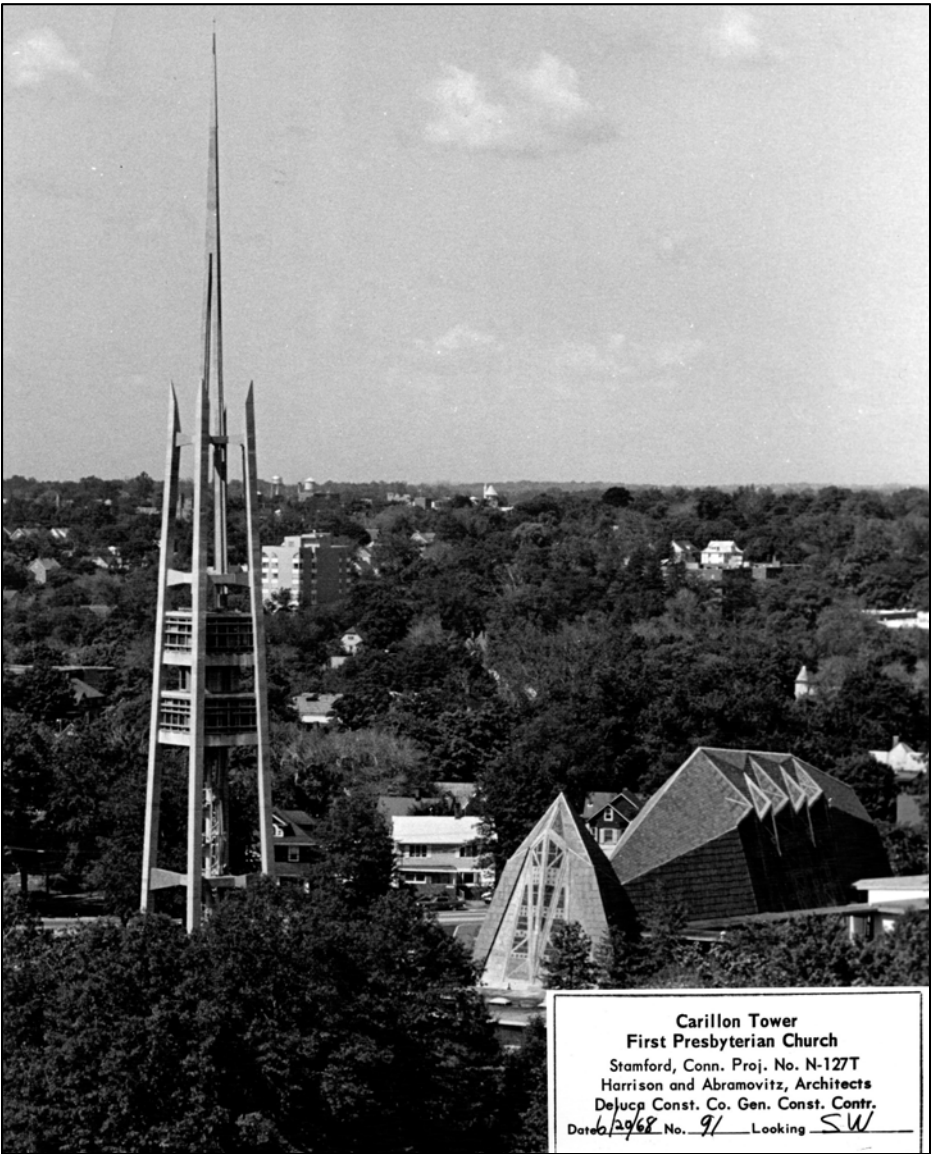


1958 as-built

Carillon Tower, period of significance 1968



EXPERIENCE
YOUR
AMERICA



National Park Service



Pan American Union Headquarters

EXPERIENCE
YOUR
AMERICA

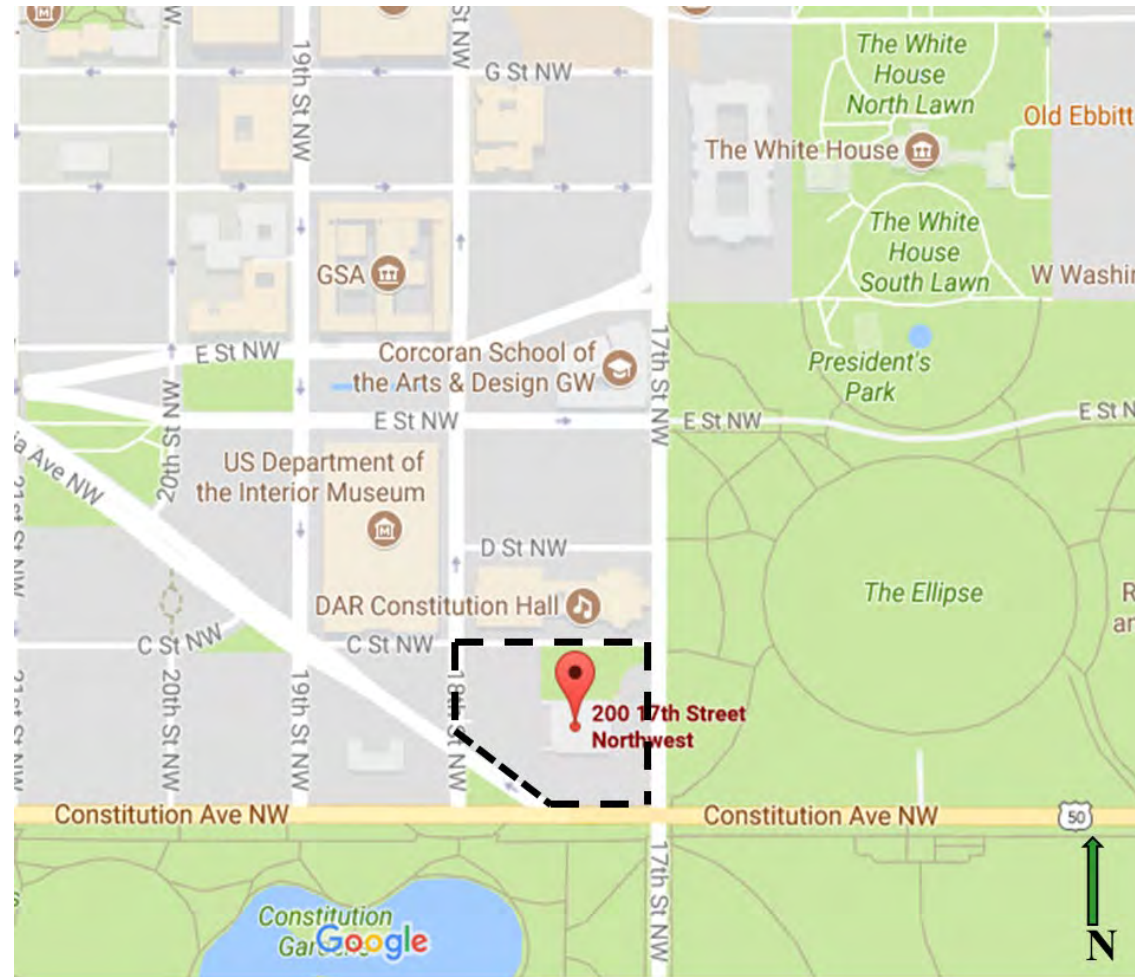


Washington, D.C.

Location: Washington, D.C.



EXPERIENCE
YOUR
AMERICA



Map of location of Pan American Union Headquarters
with the Ellipse to the east and the National Mall to the south

NHL Criteria and Theme

NHL Criteria: 1 (events), 4 (architecture)

NHL Theme: III: Expressing Cultural Value

5. Architecture, Landscape Architecture, Urban Design

VIII: Changing Role of the U.S. in the World Community

1. International Relations

2. Expansionism and Imperialism

XVI: Architecture

M. Period Revival

7. Renaissance



EXPERIENCE
YOUR
AMERICA



Figurative sculpture of South America

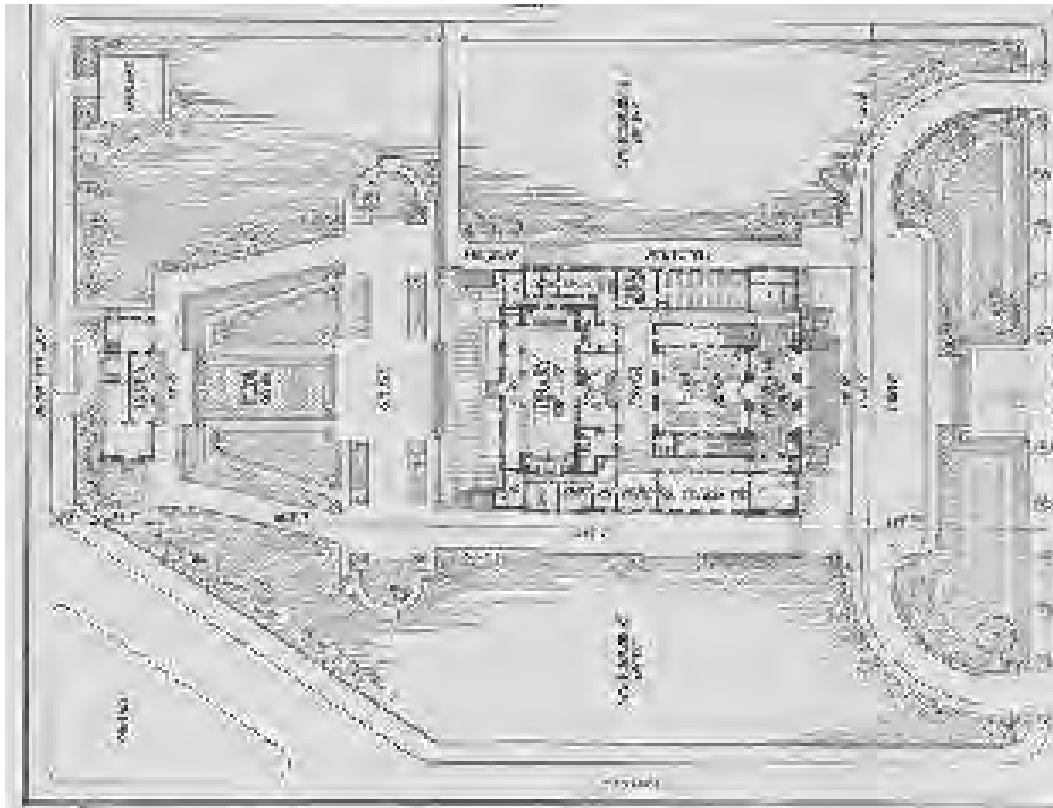
Period of Significance and Acreage

Period of Significance: 1908-1967

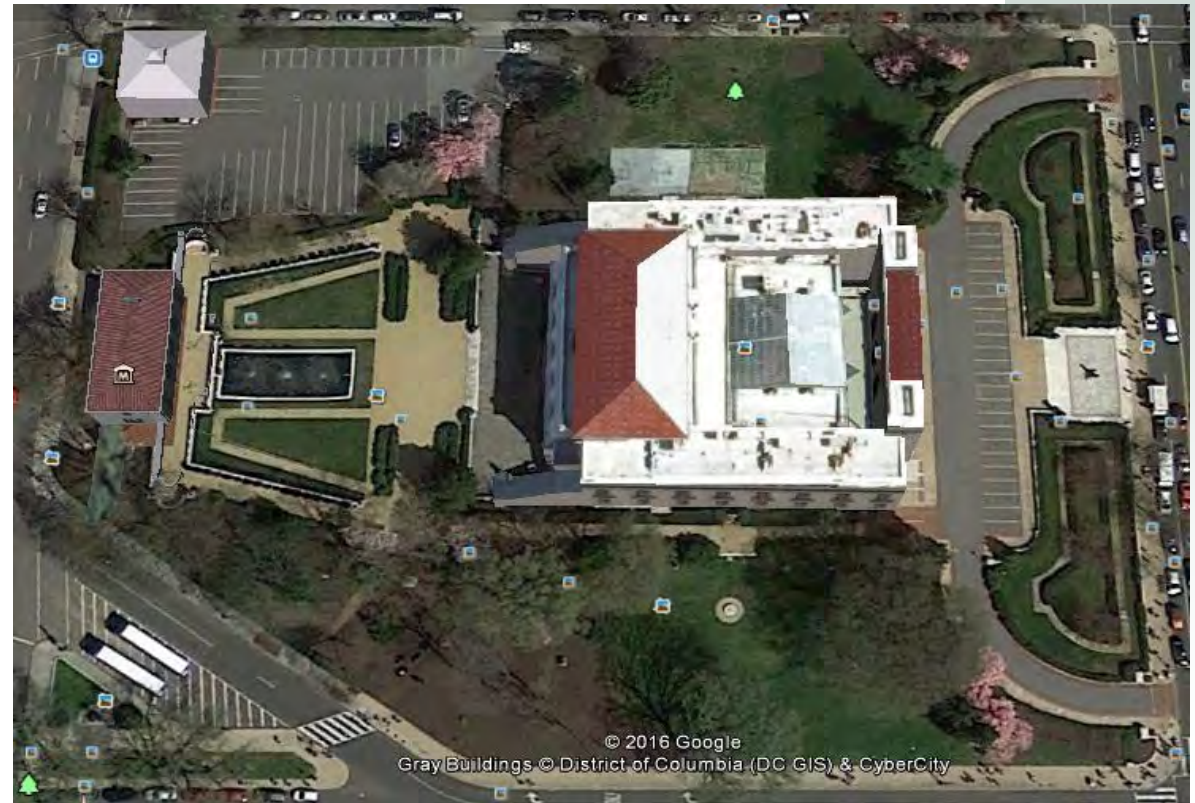
Acreage: 5 acres



EXPERIENCE
YOUR
AMERICA



Kelsey & Cret plot plan



© 2016 Google
GrayBuildings © District of Columbia (DC GIS) & CyberCity

Current aerial

Criterion 1: Events

The Pan American Union Building has been the site for decades of high-level diplomatic meetings, arbitration, policymaking, and research that defined Western Hemispheric relations.



EXPERIENCE
YOUR
AMERICA



Meeting of the Governing Board of the Pan American Union, December 8, 1914



President John F. Kennedy inaugurating the Alliance for Progress

Criterion 4: Design

The Pan American Union Building is a powerful expression of the Beaux-Arts principles of architecture and is the benchmark building that launched the nationally recognized career of architect Paul Cret. Pan American elements include a pink marble fountain with carved figures taken from the Aztec and the Mayan native cultures, and a red-clay tile floor inlaid with black stone decorations inspired by Mayan art.



Paul Cret



Aztec and Mayan influence



EXPERIENCE
YOUR
AMERICA

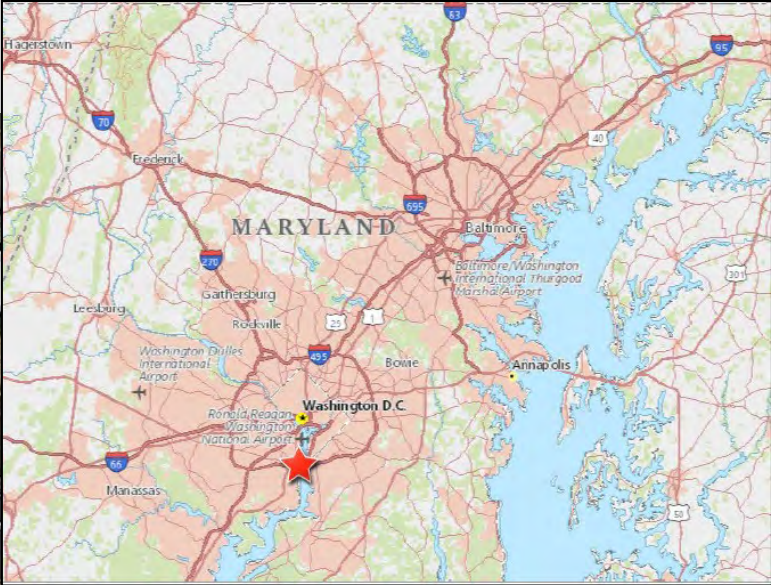
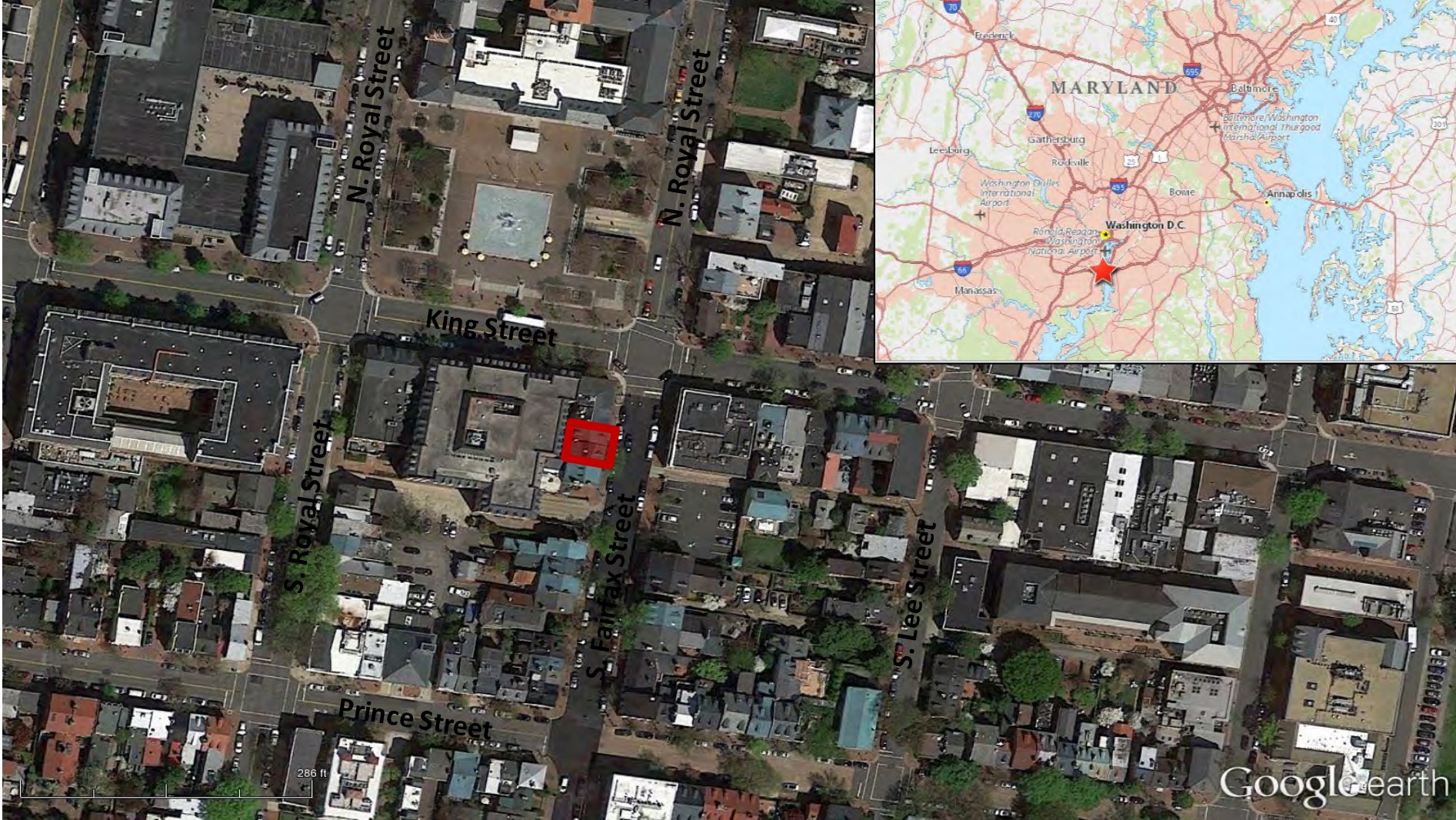
Stabler-Leadbeater Apothecary Shop

EXPERIENCE
YOUR
AMERICA



Alexandria, Virginia

Location: Alexandria, Virginia



EXPERIENCE
YOUR
AMERICA

NHL Criteria and Theme

NHL Criteria: 1 (events)

NHL Theme: V. Developing the American Economy
2. distribution and consumption
6. exchange and trade



EXPERIENCE
YOUR
AMERICA



Office and storage space (left), work counter (right)

Period of Significance and Acreage

Period of Significance: 1805-1933

Acreage: less than 1 acre



NHL boundary



EXPERIENCE
YOUR
AMERICA

Significance and Integrity

- Changing role of pharmacists
- Operation and evolution of drug stores
- Exceptionally well-preserved work and storage spaces



EXPERIENCE
YOUR
AMERICA



Stabler-Leadbeater Apothecary Shop, left, c. 1870, right, c. 2017