

National Park Service



Frieda Fromm-Reichmann Cottage



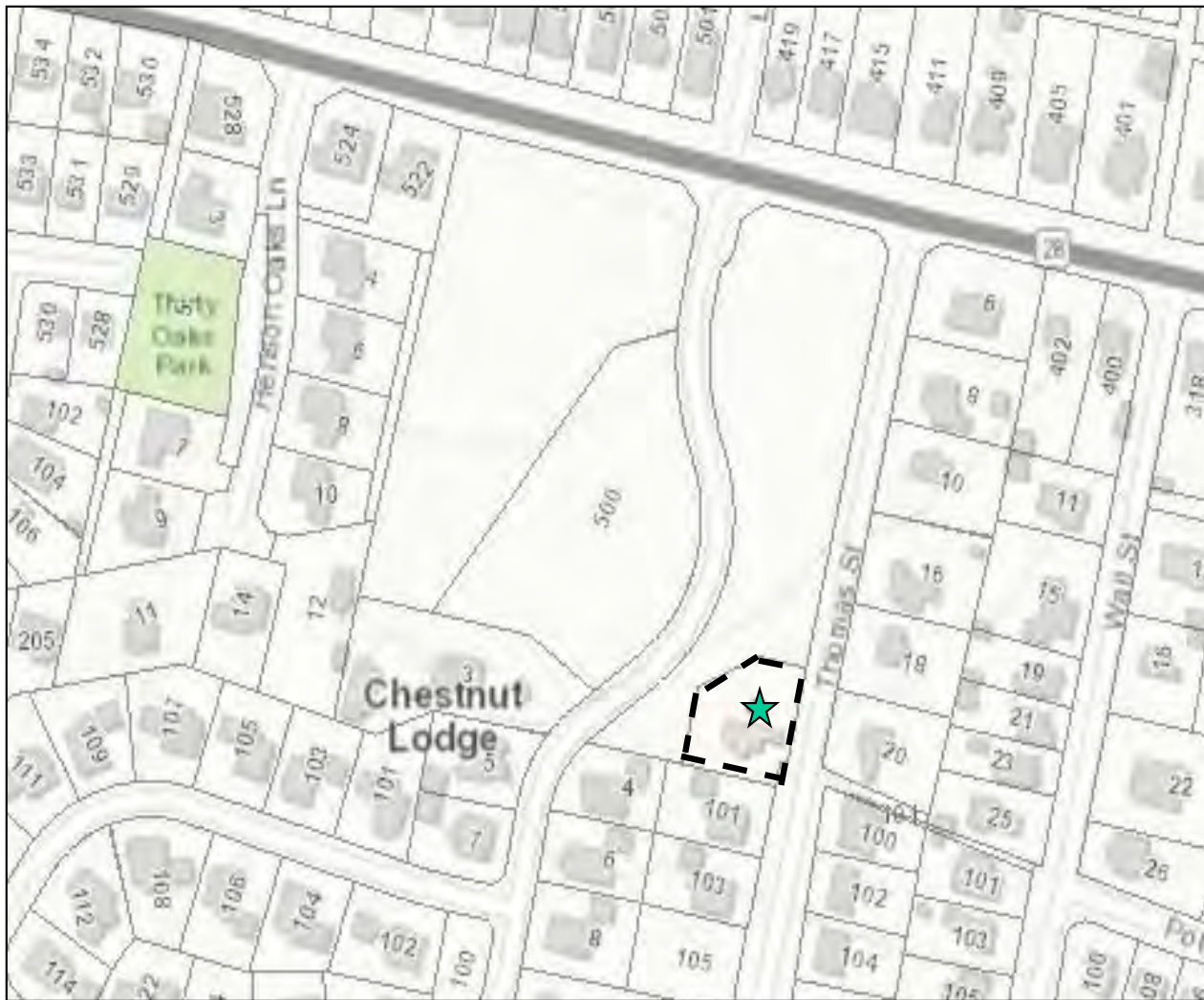
Rockville, Maryland

EXPERIENCE
YOUR
AMERICA

Location: Rockville, Maryland



EXPERIENCE
YOUR
AMERICA



Location of cottage on former Chestnut Lodge grounds.

NHL Criteria and Themes



EXPERIENCE
YOUR
AMERICA



Dr. Frieda Fromm-Reichmann

NHL Criterion: 2 (Person)

NHL Theme:

VI. Expanding Science & Technology

4. effects on lifestyle & health

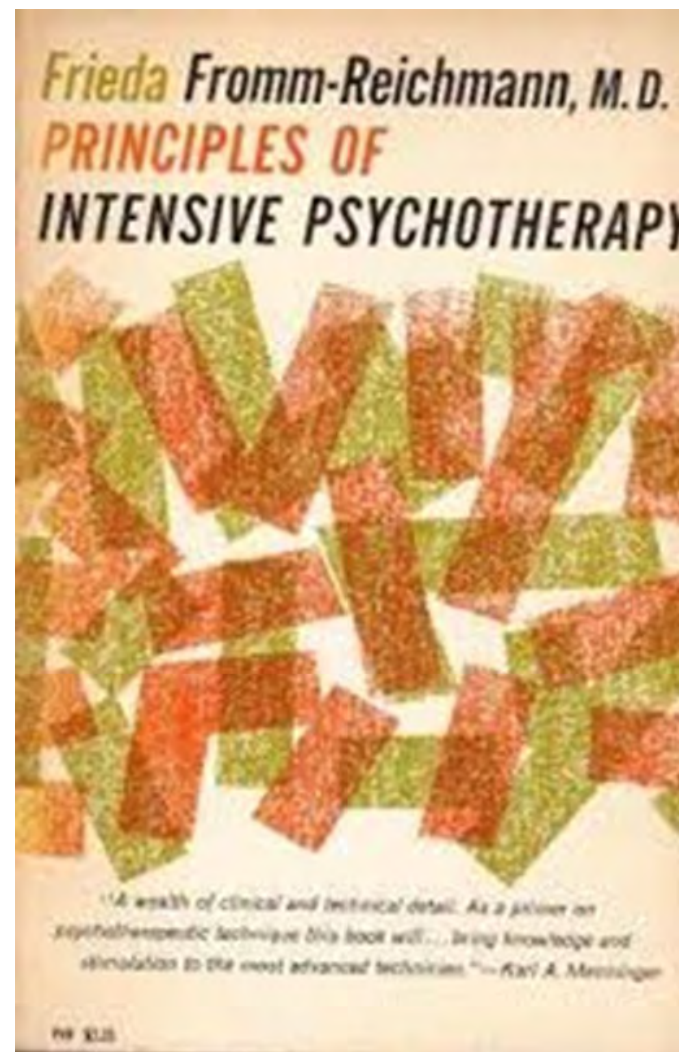
Period of Significance: 1936 - 1956



EXPERIENCE
YOUR
AMERICA



Fromm-Reichmann at work in the cottage



The Cottage



Cottage front



Cottage rear & side



Reception area



Frieda at her desk
in the cottage



EXPERIENCE
YOUR
AMERICA

National Park Service



Fort Ouiatenon Archeological District



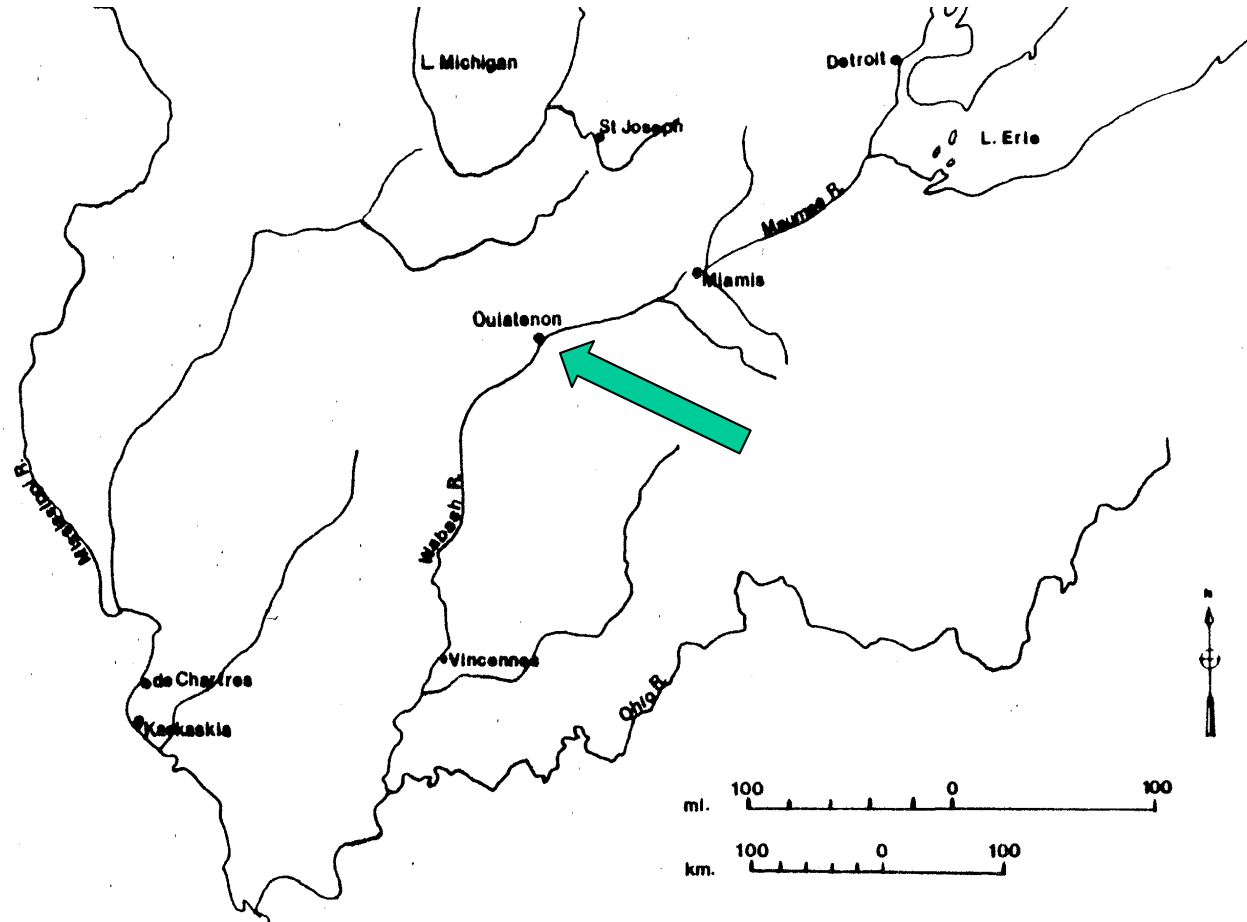
EXPERIENCE
YOUR
AMERICA

Tippecanoe County, Indiana

Location: Tiptecanoe County, Indiana



EXPERIENCE
YOUR
AMERICA



NHL Criteria and Themes

NHL Criteria: 1 (Events) and 6 (Information Potential)

NHL Themes:

I. Peopling Places

3. Migration from Outside and Within

5. Ethnic Homelands

6. Encounters, Conflicts, and

Colonization

V. Developing the American Economy

1. Extraction and Production

6. Exchange and Trade

VIII. The Changing Role of the United States in the World Community

1. International Relations

3. Expansionism and Imperialism



EXPERIENCE
YOUR
AMERICA

Period of Significance: 1717-1791

- One of the few remaining largely undisturbed 18th-century Fur-trade Era sites.
- Good example of a local distribution center in the fur trade hierarchy of outposts.
- Potential to inform about frontier processes.
- Potential to inform about cultural continuity and change among native peoples.

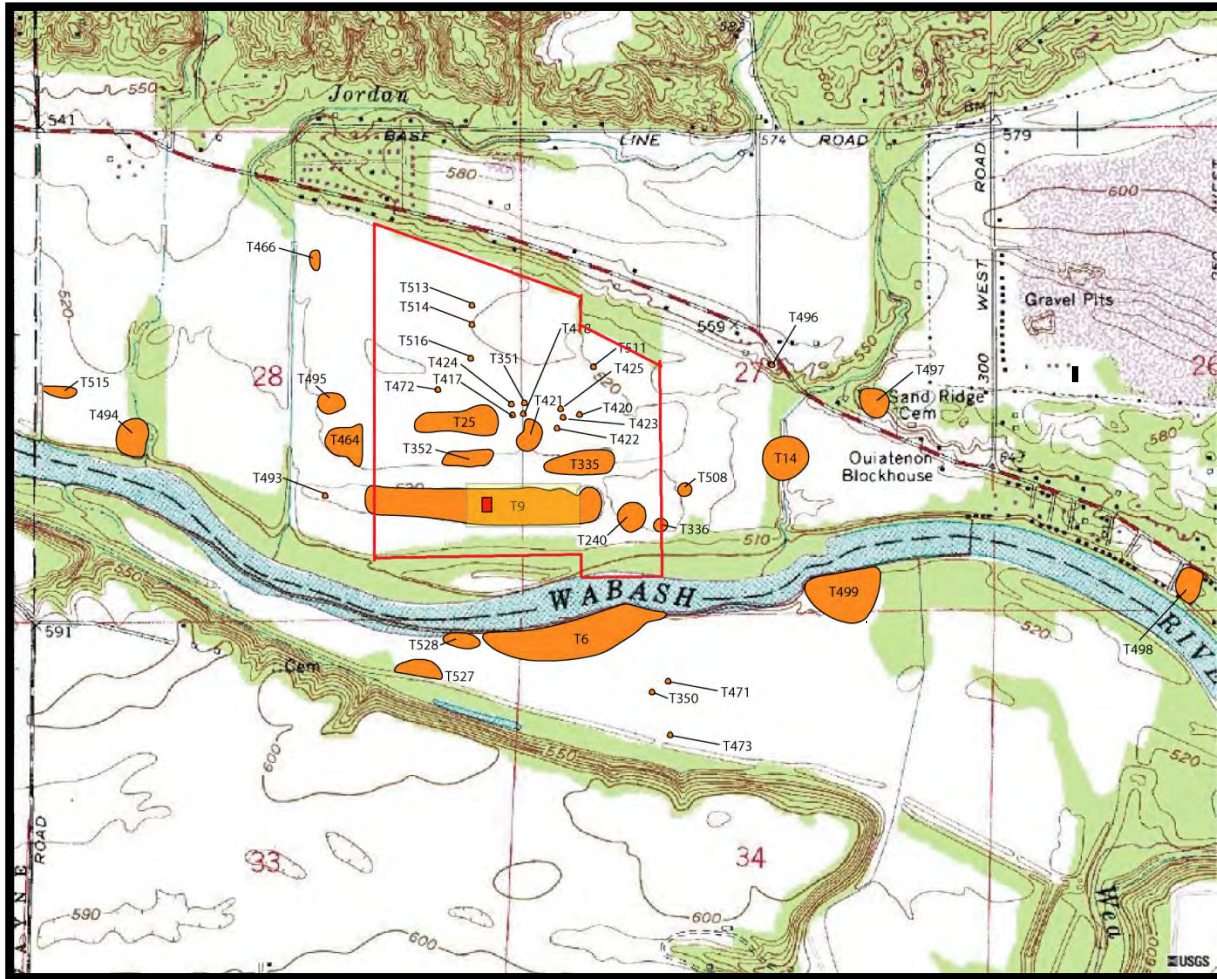


EXPERIENCE
YOUR
AMERICA

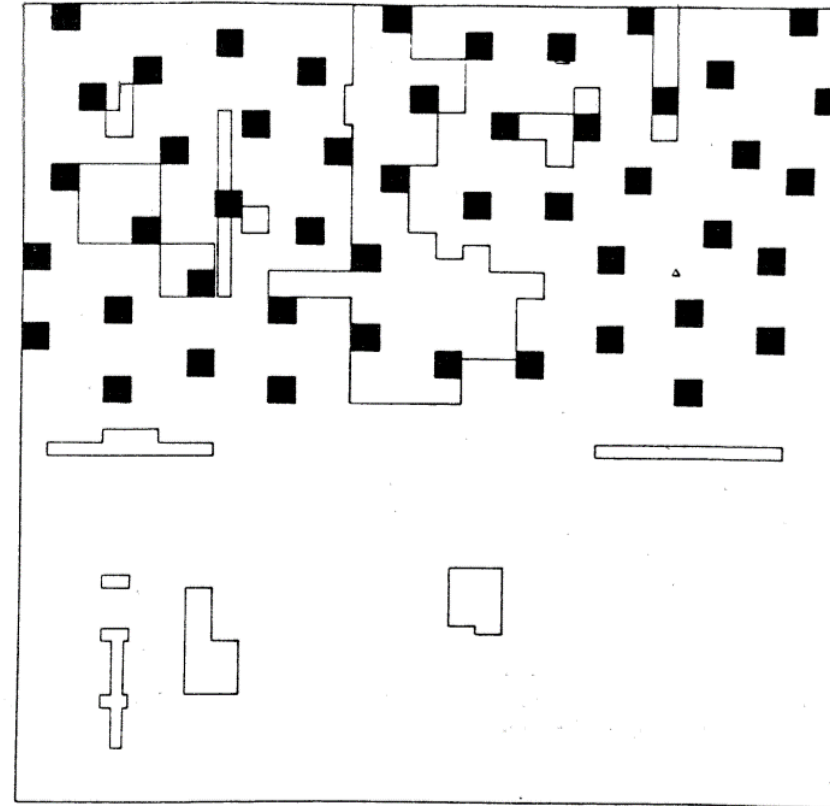
Boundary and Acreage



EXPERIENCE
YOUR
AMERICA

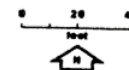


Acreage: Approx. 212.5



Controlled excavations
1968-1979

12T9
FORT QUIATENON



△ on-site datum
■ sample unit

National Park Service



Hueco Tanks



EXPERIENCE
YOUR
AMERICA

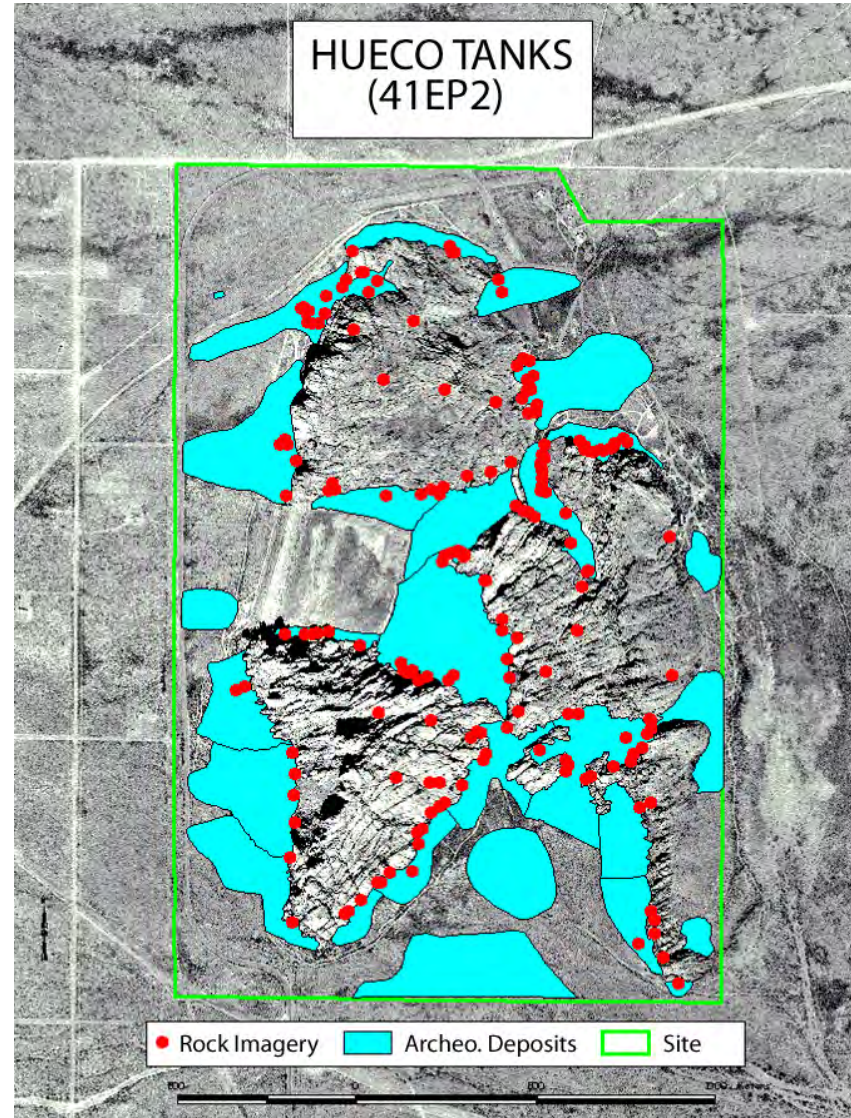
El Paso County, Texas

Location and Acreage



Location: El Paso Co, Texas

Acreage: 860.3



Archeological Resources at Hueco Tanks



EXPERIENCE
YOUR
AMERICA

NHL Criteria and Themes

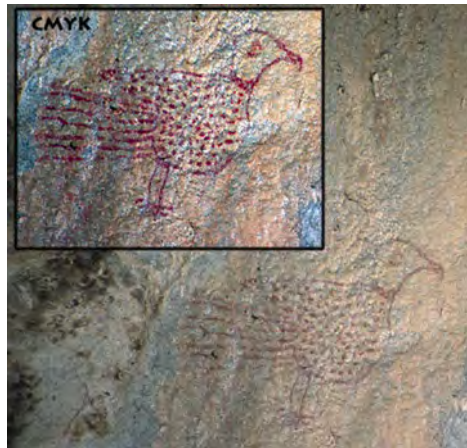
NHL Criterion: 6 (Information Potential)

NHL Criteria Exceptions: None

NHL Themes:

I. Peopling Places

III. Expressing Cultural Values



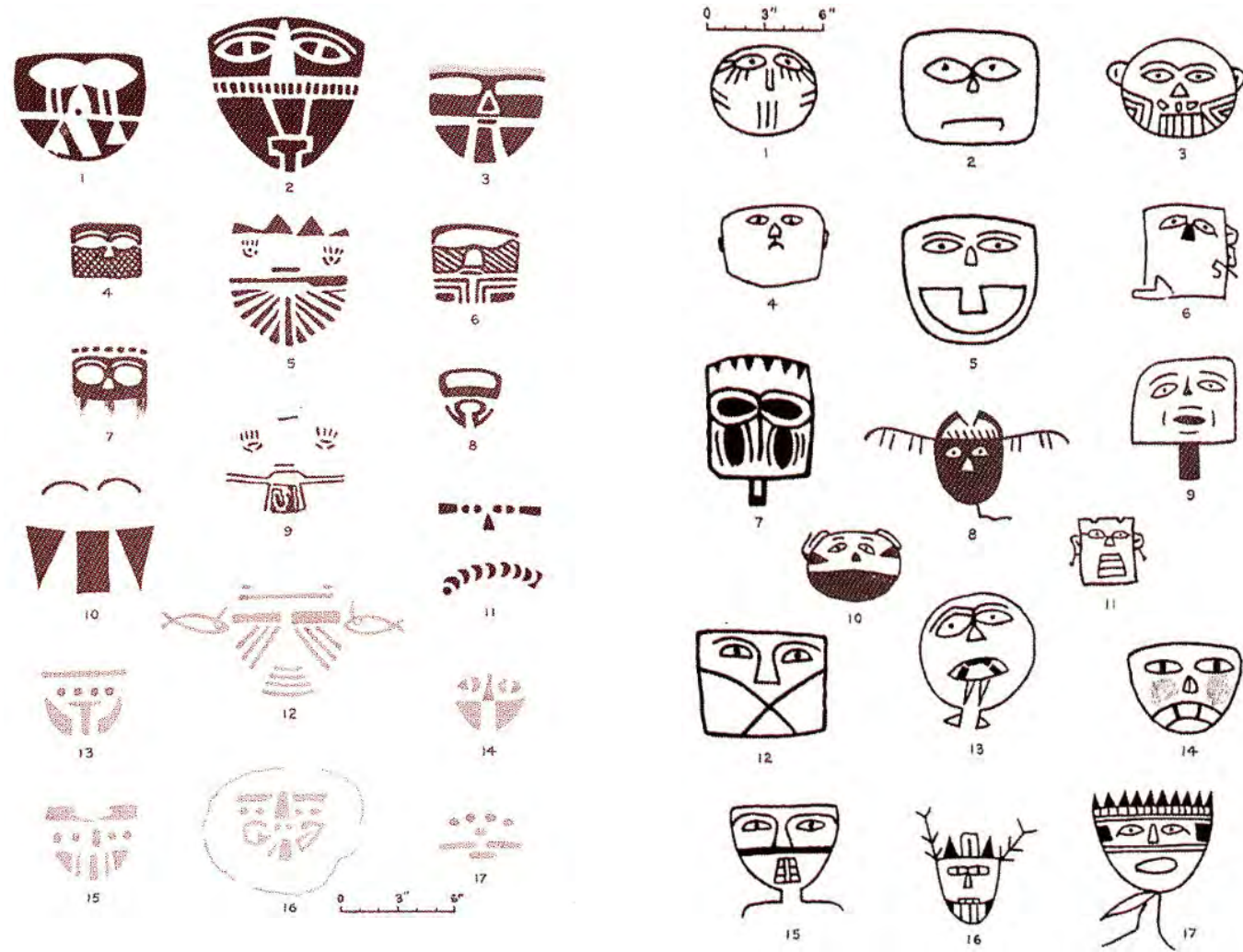
EXPERIENCE
YOUR
AMERICA



EXPERIENCE
YOUR
AMERICA

Period of Significance

Formative Period (1,800 – 550 years ago)



National Park Service



EXPERIENCE
YOUR
AMERICA

Klagetoh (Leegito) Chapter House



Annie Dodge Wauneka

Klagetoh, Navajo Nation, Arizona

Location: Klagetoh, Navajo Nation, Arizona



EXPERIENCE
YOUR
AMERICA



Klagetoh Chapter House

NHL Criteria and Themes

NHL Criterion: 2 (Person – Annie Dodge Wauenka)

NHL Criteria Exception: 8 (Less than 50 years)

NHL Themes:

- IV. Shaping the Political Landscape
 - 2. Governmental Institutions
 - 4. Political Ideas, Cultures, and Theories



1910—1997



Chapter House Interior



EXPERIENCE
YOUR
AMERICA

Period of Significance: 1963-1979



EXPERIENCE
YOUR
AMERICA



Visiting a family in a hogan, 1963



Receiving Presidential Medal of Freedom, December 1963

Boundary and Acreage



EXPERIENCE
YOUR
AMERICA




Wauneka speaking at dedication, 1963



Klagetoh Chapter House: Sketch Map



 Photo Location and Camera Direction

The white line indicates the nominated area.
Numbers in circles are photograph locations with
arrows indicating camera direction.
Contributing status is indicated by "C" for
contributing and "NC" for noncontributing.

Acreage: 0.4

National Park Service



Colorado Fuel & Iron Co. Administrative Complex

EXPERIENCE
YOUR
AMERICA



Pueblo, Colorado

Location: Pueblo, Colorado



EXPERIENCE
YOUR
AMERICA



**CF&I
Administrative
Complex**

NHL Criteria and Themes

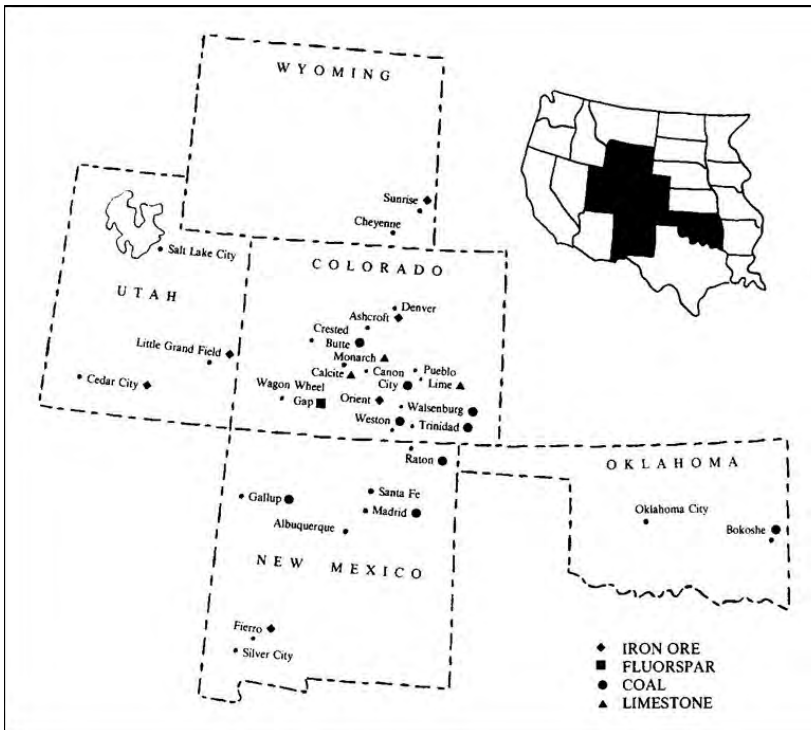
NHL Criterion: 1 (Events)

NHL Themes:

V--Developing the American Economy

1. Extraction and Production

4. Workers and Work Culture



The CF&I iron and steel works in Pueblo



Bar Mill Workers, c. 1900



EXPERIENCE
YOUR
AMERICA

Period of Significance: 1901-1942



EXPERIENCE
YOUR
AMERICA



1918 aerial view of steel plant. Arrow indicates the Administrative Complex.



John D. Rockefeller, Jr. and ERP representatives, 1915



John D. Rockefeller, Jr., Mackenzie King, and coal miner, 1915

Boundary and Acreage



EXPERIENCE
YOUR
AMERICA



CF&I Administrative Complex: Sketch Map

Contributing Status

- Contributing
- Noncontributing

5 Photo Location and Camera Direction



0 144 Feet

== NHL District Boundary

Acreage: 2.6



Birds-eye-view north, ca. 2010



District Components



EXPERIENCE
YOUR
AMERICA

Office Building



Office Annex



Dispensary/Employment Office

Karymor
Merry-go-round



Sales Office

National Park Service



EXPERIENCE
YOUR
AMERICA

Surf Ballroom

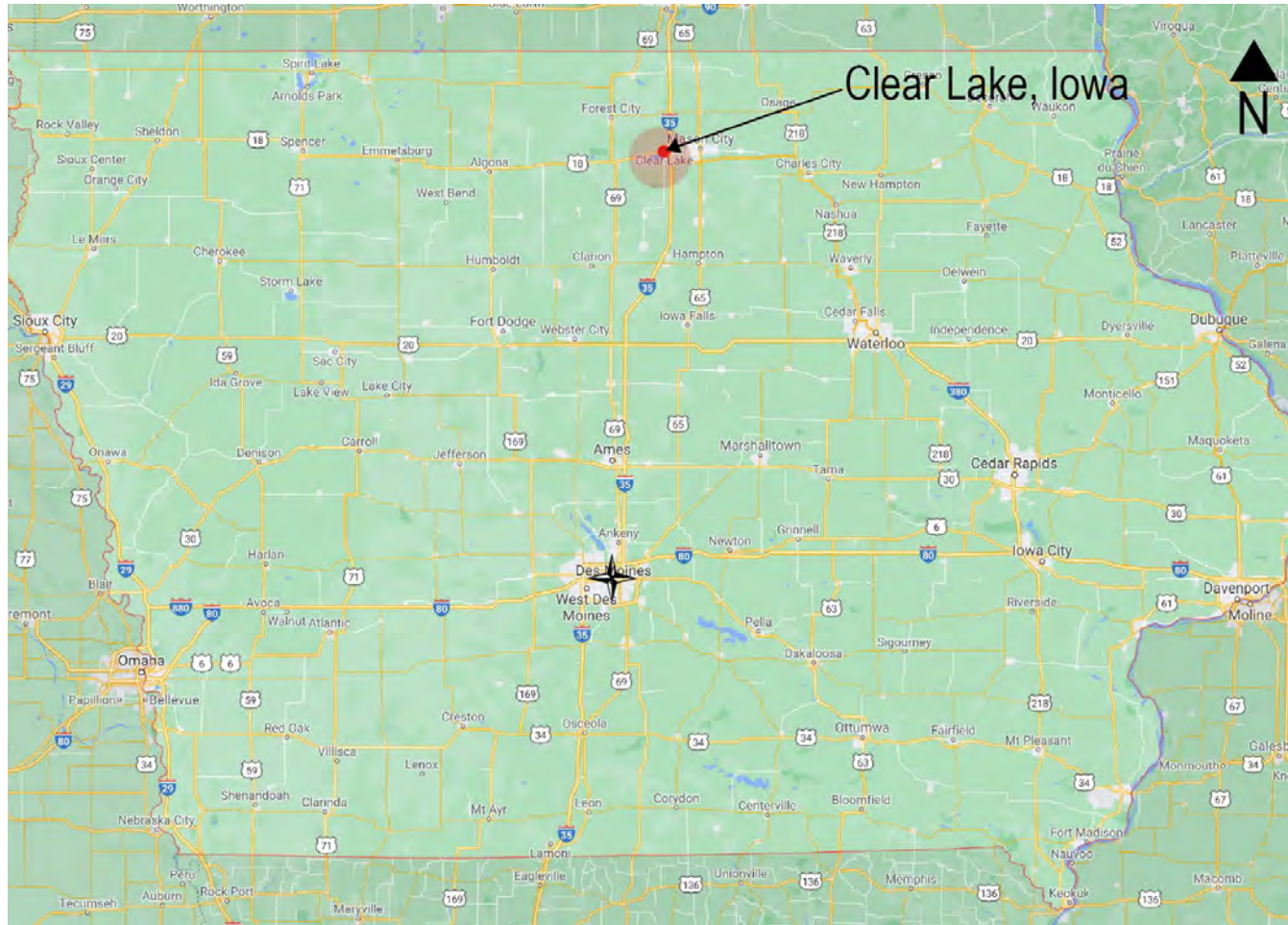


Clear Lake, Iowa

Location: Clear Lake, Iowa



EXPERIENCE
YOUR
AMERICA



NHL Criterion and Themes

NHL Criterion: 1 (Events - History of Rock and Roll)

NHL Theme - Expressing Cultural Values

Visual and Performing Arts
Mass Media
Popular and Traditional Culture



EXPERIENCE
YOUR
AMERICA

Period of Significance: 1959 (February 2)



EXPERIENCE
YOUR
AMERICA



Buddy Holly's final performance

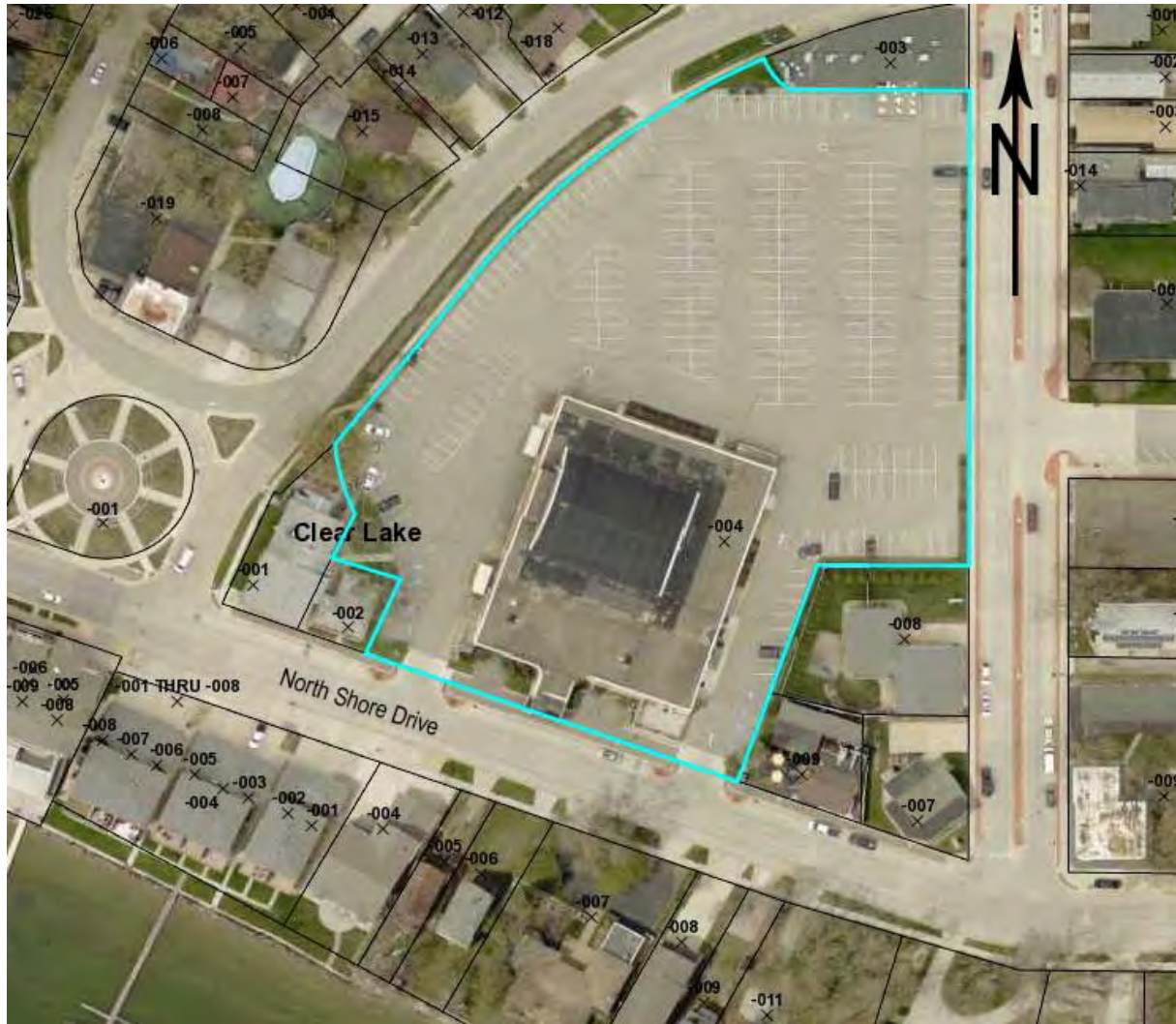


The Surf Ballroom, c. 1949

Boundary and Acreage



EXPERIENCE
YOUR
AMERICA



Acreage: 3.25



Recommendations of Landmarks Committee

The Committee recommends that the National Park System Advisory Board recommend to the Secretary of the Interior the designation of the following properties as National Historic Landmarks, with any additions and corrections as noted by the Committee being made prior to the nominations being forwarded to the Secretary of the Interior for action:

1. Tolson's Chapel and School, Sharpsburg, Maryland (Criterion 1; Exception 1)
2. Dudley Farm, Newberry, Alachua County, Florida (Criteria 1 and 5)
3. Monroe County Courthouse, Monroeville, Alabama (Criterion 1)
4. Mary Baker Eddy House, Lynn, Massachusetts (Criterion 2; Exception 1)
5. University of Wisconsin Arboretum, Madison, Wisconsin (Criterion 1)
6. Frieda Fromm-Reichmann Cottage, Rockville, Maryland (Criterion 2)
7. Fort Ouiatenon Archeological District, Tippecanoe County, Indiana (Criteria 1 and 6)
8. Hueco Tanks, El Paso County, Texas (Criterion 6)
9. Klagetoh (*Leegito*) Chapter House, Klagetoh, Navajo Nation, Arizona (Criterion 2; Exception 8)
10. Colorado Fuel and Iron Company Administrative Complex, Pueblo, Colorado (Criterion 1)
11. Surf Ballroom, Clear Lake, Iowa (Criterion 1)