

OMAHA UNION STATION

United States Department of the Interior, National Park Service

National Register of Historic Places Registration Form

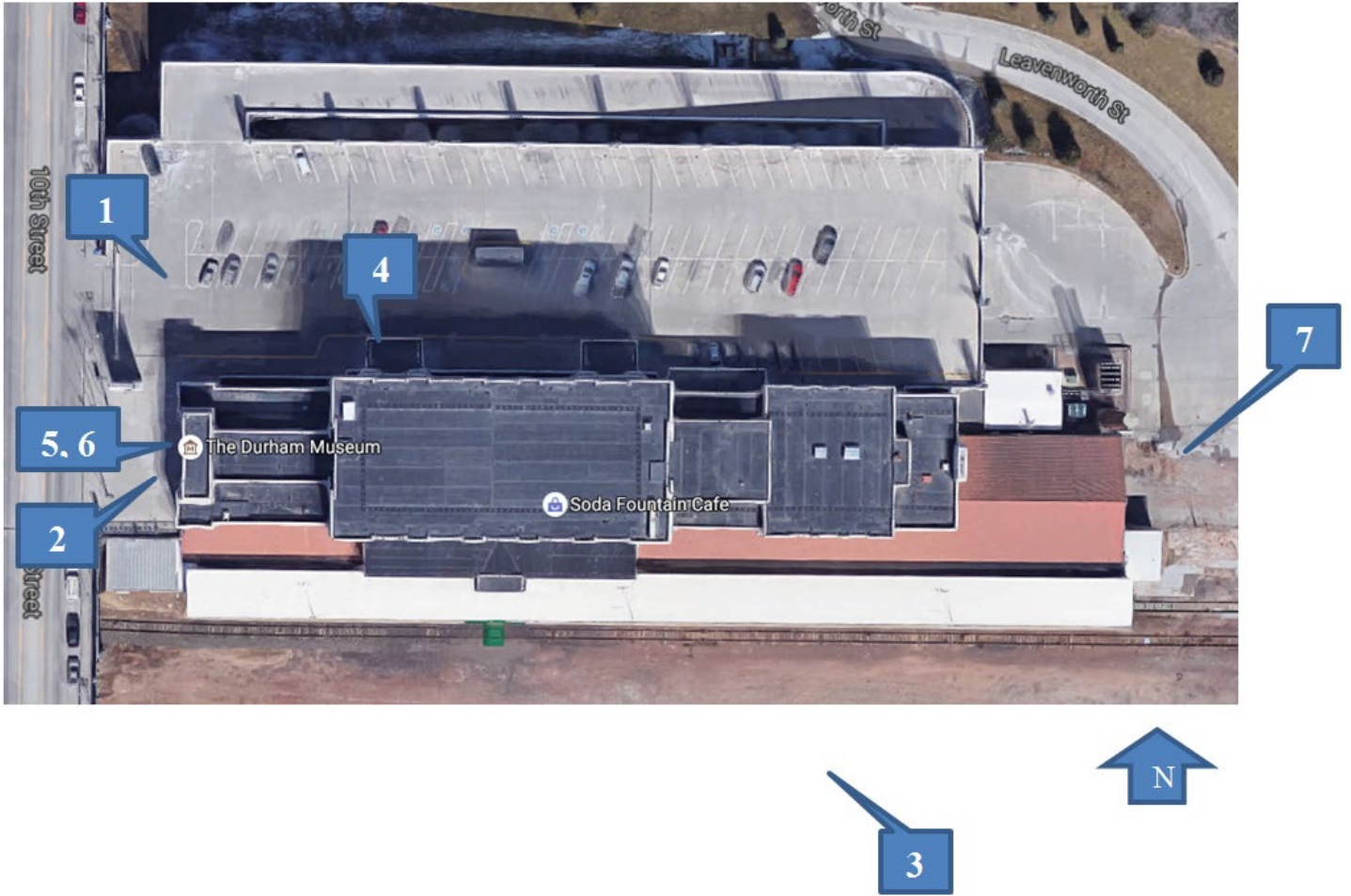


PHOTO KEY (EXTERIOR)

Source: Google Maps (annotated in MS-Word).

Format: Tag Image File (tif). CD-ROM with TIF images on file with NPS in Washington, D.C.

OMAHA UNION STATION

United States Department of the Interior, National Park Service

National Register of Historic Places Registration Form

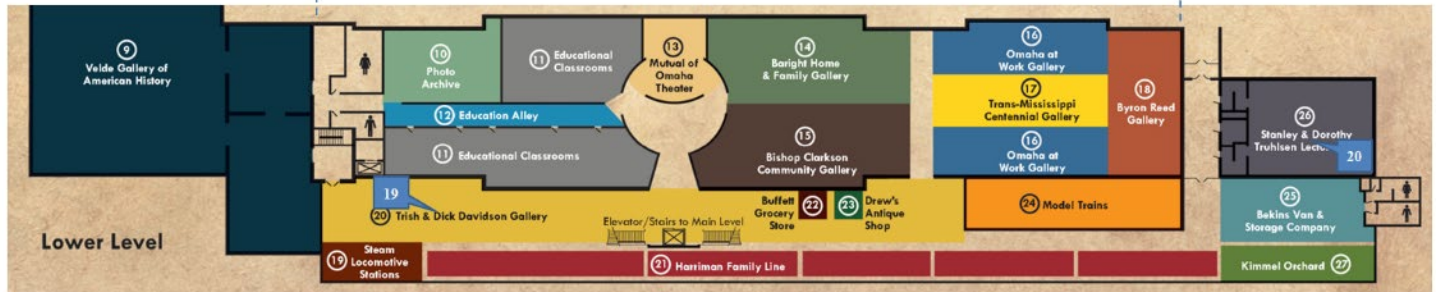
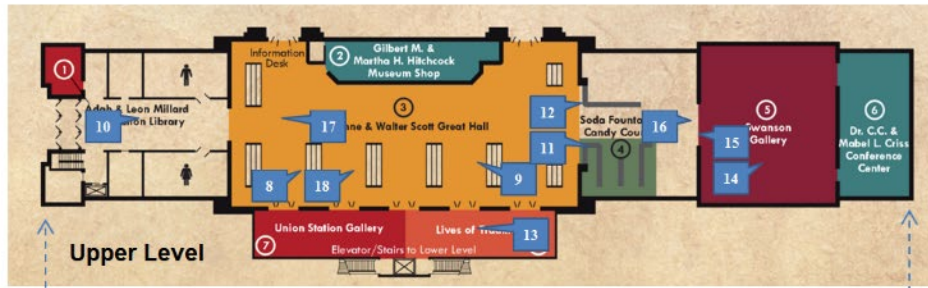


PHOTO KEY (INTERIOR)

Source: "Floor Plan." The Durham Museum, Omaha, Nebraska (annotated in MS-Word). <http://durhammuseum.org/Post/sections/20/Files/map2.pdf>.

Format: Tag Image File (tif). CD-ROM with TIF images on file with NPS in Washington, D.C.

OMAHA UNION STATION**Page 121**

United States Department of the Interior, National Park Service

National Register of Historic Places Registration Form



OMAHA UNION STATION, 1931, NORTH FAÇADE.

FROM LEFT TO RIGHT: SMOKESTACK, 1899; STAIR ENCLOSURE, 1995; OMAHA UNION STATION; MUSEUM SIGN AND FLAGS; AND MAXIMUM-HEIGHT STEEL STRUCTURE.

NOTE: ONLY THE STATION IS INCLUDED IN THE NHL BOUNDARY.

Omaha Union Station NHL

Omaha Vicinity

Douglas County

View to the south

Web Boy Design (Michael Roach), photographer, April 2012.

CD-ROM with TIFF images on file with NPS in Washington, D.C.

Photo 1 of 20

OMAHA UNION STATION

United States Department of the Interior, National Park Service

National Register of Historic Places Registration Form



OMAHA UNION STATION, 1931, WEST FAÇADE.

Omaha Union Station NHL

Omaha Vicinity

Douglas County

View to the east

Web Boy Design (Michael Roach), photographer, April 2012.

CD-ROM with TIFF images on file with NPS in Washington, D.C.

Photo 2 of 20

OMAHA UNION STATION**Page 123**

United States Department of the Interior, National Park Service

National Register of Historic Places Registration Form



OMAHA UNION STATION, 1931, SOUTH WALL.

FROM LEFT TO RIGHT: MUSEUM STORAGE BUILDING, THE TRISH AND DICK DAVIDSON GALLERY (WITH CLERESTORY WINDOWS), REHABILITATED CONCOURSE WITH STAIRS AND ELEVATOR (ABOVE AND BEHIND THE DAVIDSON GALLERY).

NOTE: ONLY THE STATION BUILDING, REHABILITATED CONCOURSE, STAIRS AND ELEVATOR ARE INCLUDED IN THE NHL BOUNDARY.

Omaha Union Station NHL

Omaha Vicinity

Douglas County

View to the west

Web Boy Design (Michael Roach), photographer, April 2012.

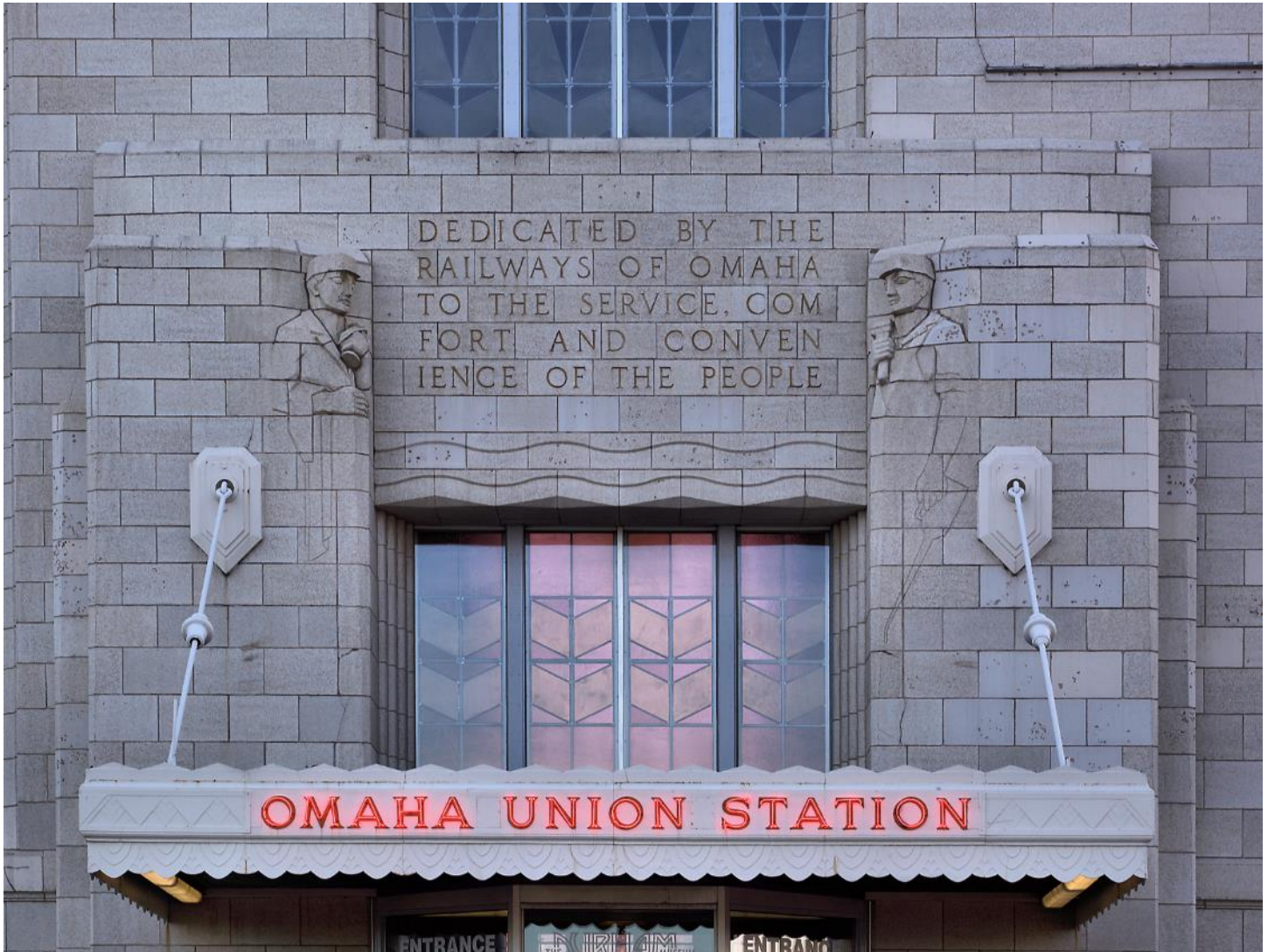
CD-ROM with TIFF images on file with NPS in Washington, D.C.

Photo 3 of 20

OMAHA UNION STATION**Page 124**

United States Department of the Interior, National Park Service

National Register of Historic Places Registration Form



OMAHA UNION STATION, 1931, NORTH FAÇADE, WEST ENTRANCE DETAIL.

Omaha Union Station NHL

Omaha Vicinity

Douglas County

View to the south

Web Boy Design (Michael Roach), photographer, April 2012.

CD-ROM with TIFF images on file with NPS in Washington, D.C.

Photo 4 of 20

OMAHA UNION STATION

United States Department of the Interior, National Park Service

National Register of Historic Places Registration Form



OMAHA UNION STATION, 1931, WEST ENTRANCE DETAIL: ARTICULATED TRACK WORKER HOLDING A SPIKE HAMMER

Omaha Union Station NHL
Omaha Vicinity
Douglas County
View to the east
Web Boy Design (Michael Roach), photographer,
April 2012
CD-ROM with TIFF images on file with NPS in
Washington, D.C.

Photo 5 of 20



OMAHA UNION STATION, 1931, WEST ENTRANCE DETAIL: ARTICULATED ENGINEER HOLDING A SMALL HAMMER AND WRENCH.

Omaha Union Station NHL
Omaha Vicinity
Douglas County
View to the east
Web Boy Design (Michael Roach), photographer,
April 2012
CD-ROM with TIFF images on file with NPS in
Washington, D.C.

Photo 6 of 20

OMAHA UNION STATION**Page 126**

United States Department of the Interior, National Park Service

National Register of Historic Places Registration Form



OMAHA UNION STATION, 1899, BOILER HOUSE, EAST WALL

FROM LEFT TO RIGHT: 1996 REST ROOM ADDITION, BOILER HOUSE, EAST WALL OF STATION, 1899 SMOKESTACK. IN THE BACKGROUND ABOVE THE ADDITION IS THE ROOF OF THE TRISH AND DICK DAVIDSON GALLERY.

NOTE: ONLY THE BOILER HOUSE AND STATION BUILDING ARE INCLUDED IN THE NHL BOUNDARY.

Omaha Union Station NHL

Omaha Vicinity

Douglas County

View to the west

Web Boy Design (Michael Roach), photographer, March 2016.

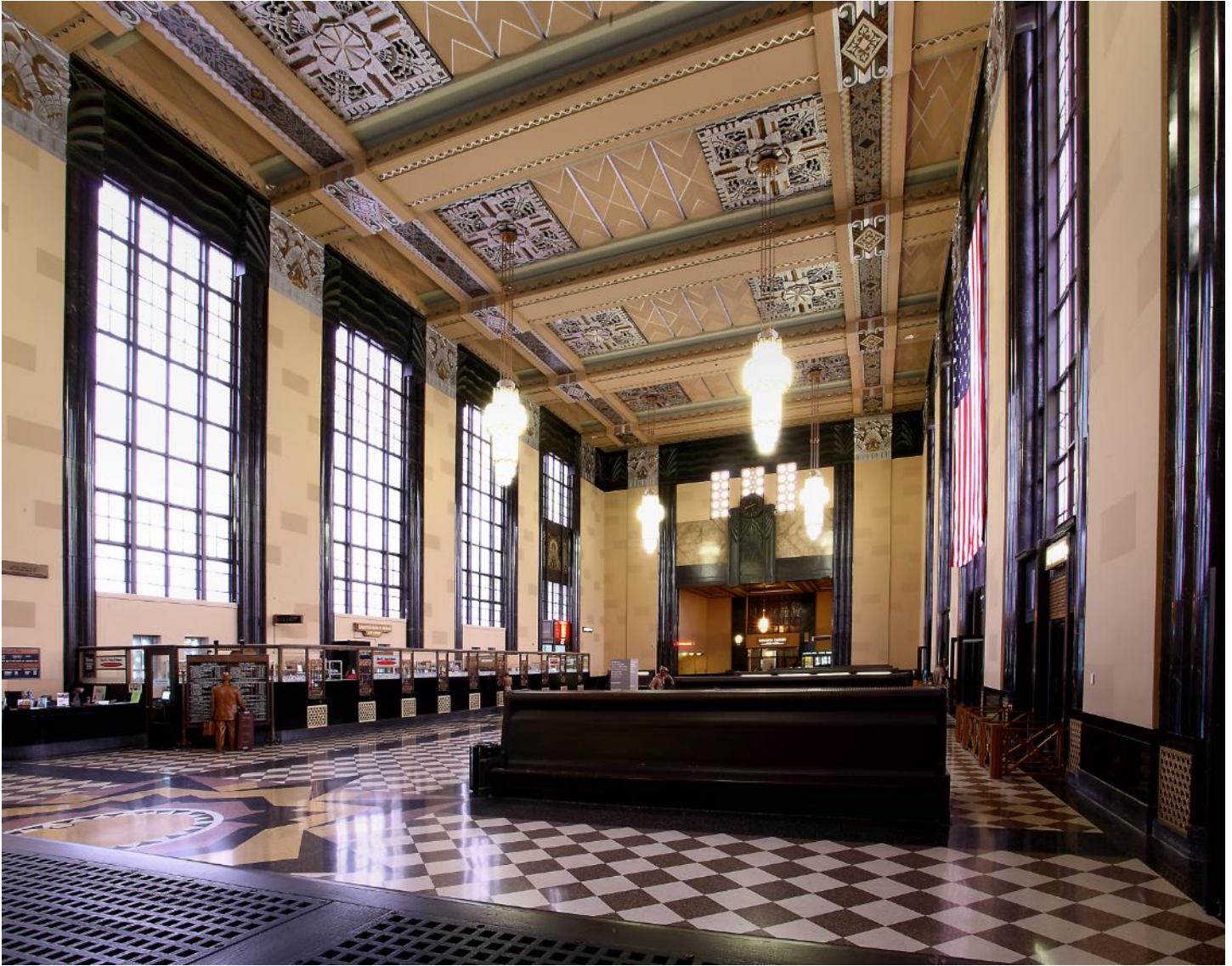
CD-ROM with TIFF images on file with NPS in Washington, D.C.

Photo 7 of 20

OMAHA UNION STATION**Page 127**

United States Department of the Interior, National Park Service

National Register of Historic Places Registration Form



OMAHA UNION STATION, 1931, MAIN WAITING ROOM (“GREAT HALL”)

Omaha Union Station NHL

Omaha Vicinity

Douglas County

View to the northeast

Web Boy Design (Michael Roach), photographer, April 2012.

CD-ROM with TIFF images on file with NPS in Washington, D.C.

Photo 8 of 20

OMAHA UNION STATION**Page 128**

United States Department of the Interior, National Park Service

National Register of Historic Places Registration Form



OMAHA UNION STATION, 1931, MAIN WAITING ROOM (“GREAT HALL”)

Omaha Union Station NHL

Omaha Vicinity

Douglas County

View to the northwest

Web Boy Design (Michael Roach), photographer, April 2012.

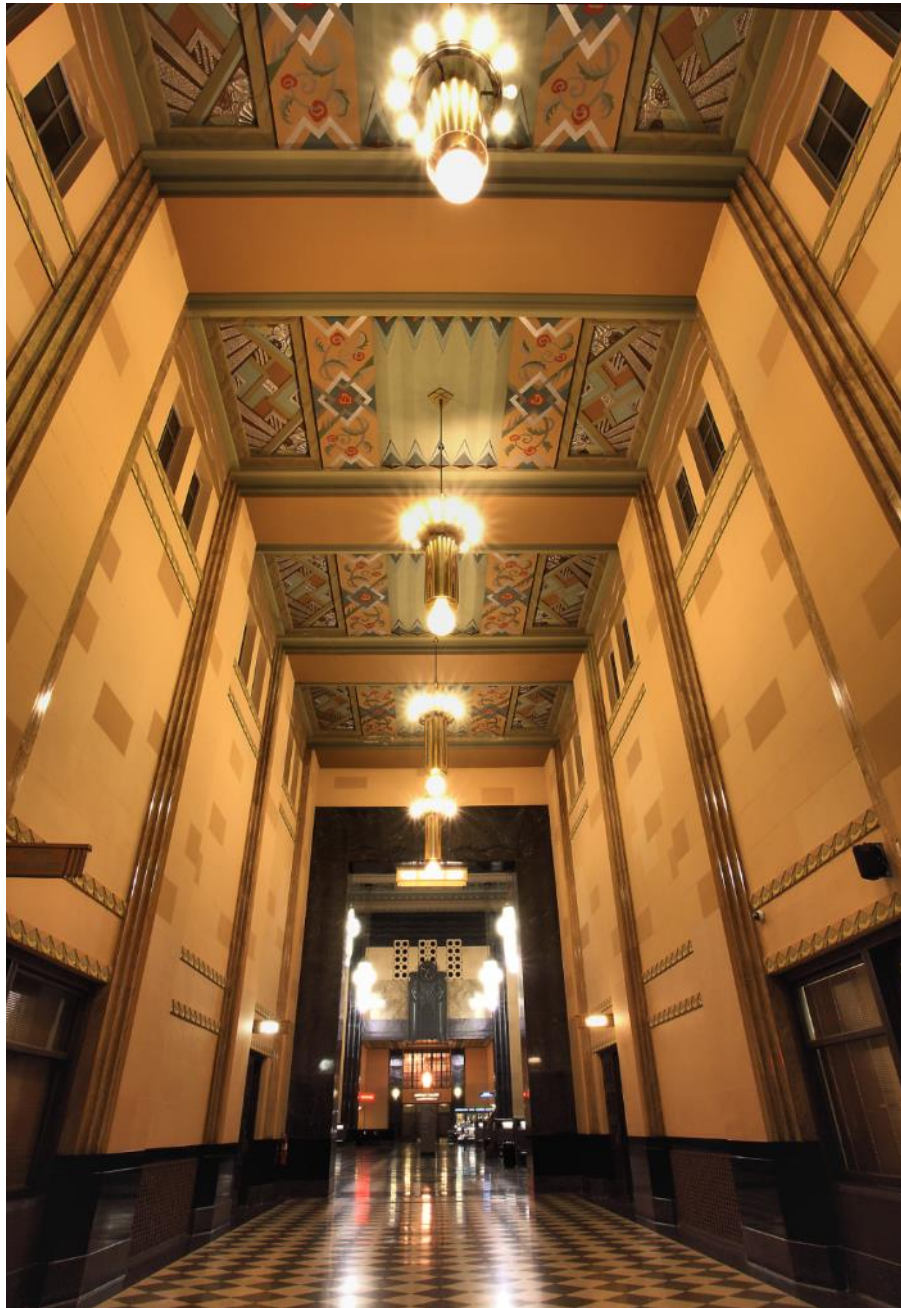
CD-ROM with TIFF images on file with NPS in Washington, D.C.

Photo 9 of 20

OMAHA UNION STATION

United States Department of the Interior, National Park Service

National Register of Historic Places Registration Form



OMAHA UNION STATION, 1931, WEST ENTRANCE CORRIDOR

Omaha Union Station NHL

Omaha Vicinity

Douglas County

View to the east

Web Boy Design (Michael Roach), photographer, April 2012.

CD-ROM with TIFF images on file with NPS in Washington, D.C.

Photo 10 of 20

OMAHA UNION STATION**Page 130**

United States Department of the Interior, National Park Service

National Register of Historic Places Registration Form



OMAHA UNION STATION, 1931, REHABILITATED SODA FOUNTAIN AND CONCESSIONS AREA

Omaha Union Station NHL

Omaha Vicinity

Douglas County

View to the southeast

Web Boy Design (Michael Roach), photographer, April 2012.

CD-ROM with TIFF images on file with NPS in Washington, D.C.

Photo 11 of 20

OMAHA UNION STATION

United States Department of the Interior, National Park Service

National Register of Historic Places Registration Form



OMAHA UNION STATION, 1931, REHABILITATED BAGGAGE AREA

Omaha Union Station NHL

Omaha Vicinity

Douglas County

View to the east

Web Boy Design (Michael Roach), photographer, April 2012.

CD-ROM with TIFF images on file with NPS in Washington, D.C.

Photo 12 of 20

OMAHA UNION STATION**Page 132**

United States Department of the Interior, National Park Service

National Register of Historic Places Registration Form



OMAHA UNION STATION, 1931, REHABILITATED CONCOURSE AREA

(UNION STATION AND LIVES OF TRADITION GALLERIES)

Omaha Union Station NHL

Omaha Vicinity

Douglas County

View to the west

Web Boy Design (Michael Roach), photographer, April 2012.

CD-ROM with TIFF images on file with NPS in Washington, D.C.

Photo 13 of 20

OMAHA UNION STATION**Page 133**

United States Department of the Interior, National Park Service

National Register of Historic Places Registration Form



OMAHA UNION STATION, 1931, DINING ROOM

(NOW THE SWANSON GALLERY).

Omaha Union Station NHL

Omaha Vicinity

Douglas County

View to the northeast

Web Boy Design (Michael Roach), photographer, April 2012.

CD-ROM with TIFF images on file with NPS in Washington, D.C.

Photo 14 of 20

OMAHA UNION STATION**Page 134**

United States Department of the Interior, National Park Service

National Register of Historic Places Registration Form



OMAHA UNION STATION, 1931, DINING ROOM, WEST WALL DETAIL.

ONE OF SIX MURALS EXECUTED BY LOS ANGELES ARTIST JOSEPH W. KELLER IN 1931,
RESTORED IN JANUARY 2008.

Omaha Union Station NHL

Omaha Vicinity

Douglas County

View to the west

Web Boy Design (Michael Roach), photographer, April 2012.

CD-ROM with TIFF images on file with NPS in Washington, D.C.

Photo 15 of 20

OMAHA UNION STATION

United States Department of the Interior, National Park Service

National Register of Historic Places Registration Form



OMAHA UNION STATION, 1931, DINING ROOM ENTRANCE HALL CEILING

Omaha Union Station NHL

Omaha Vicinity

Douglas County

View to the east

Web Boy Design (Michael Roach), photographer, April 2012.

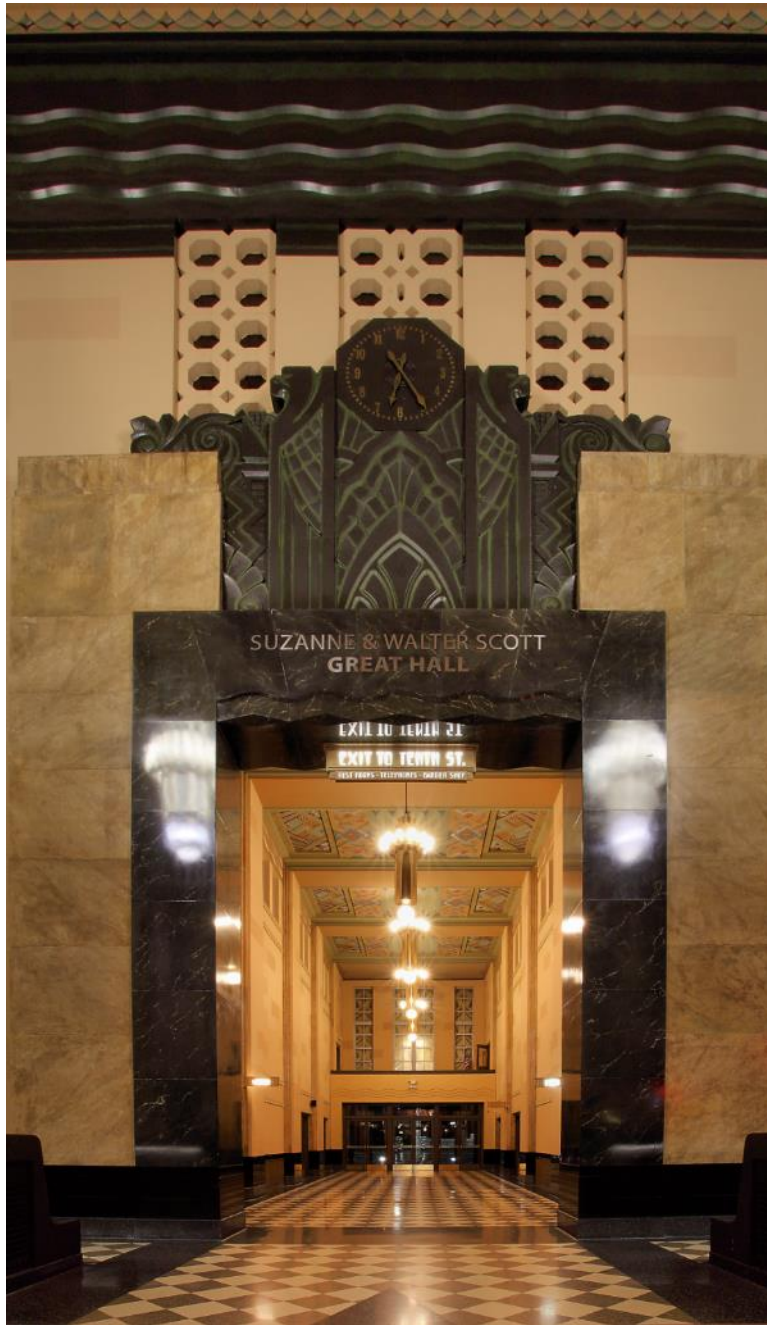
CD-ROM with TIFF images on file with NPS in Washington, D.C.

Photo 16 of 20

OMAHA UNION STATION**Page 136**

United States Department of the Interior, National Park Service

National Register of Historic Places Registration Form



OMAHA UNION STATION, 1931, WEST ARCHWAY OF GREAT HALL LOOKING TOWARD WEST ENTRANCE CORRIDOR.

Omaha Union Station NHL

Omaha Vicinity

Douglas County

View to the west

Web Boy Design (Michael Roach), photographer, April 2012.

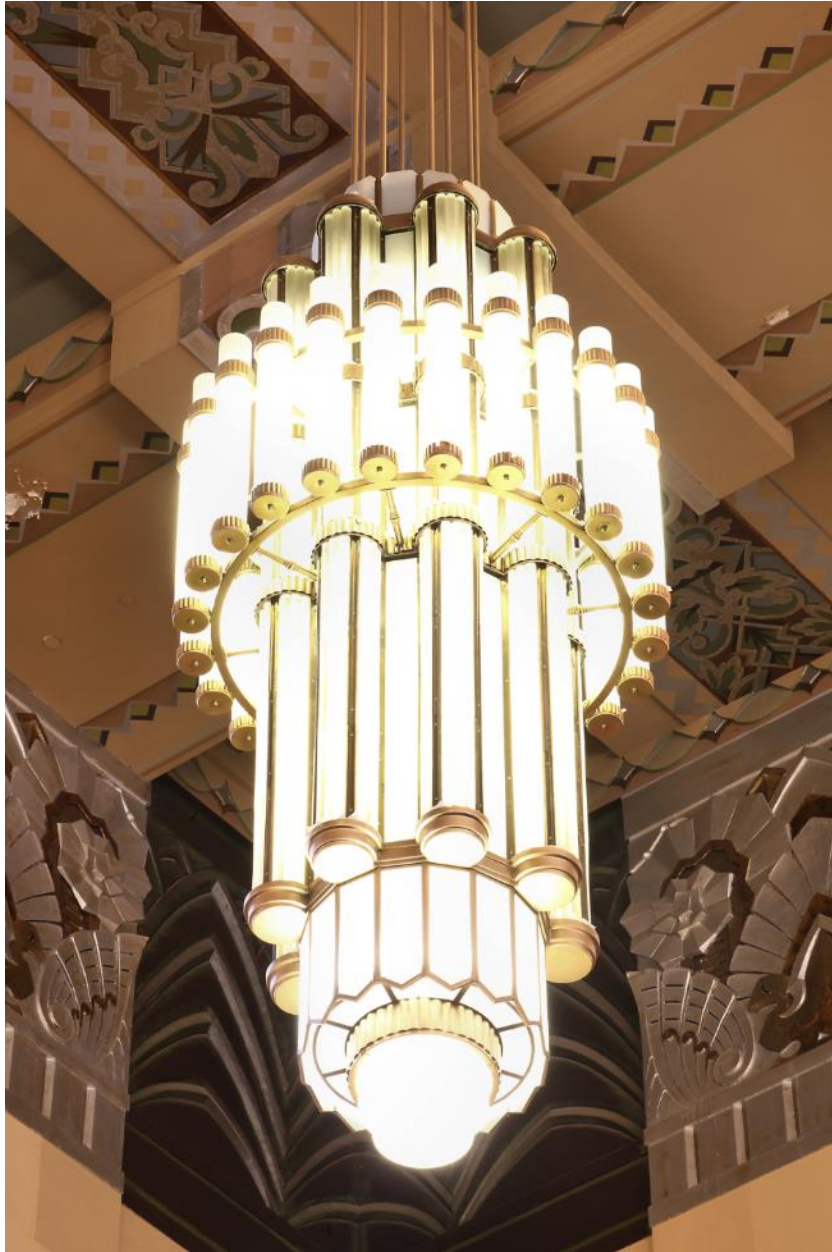
CD-ROM with TIFF images on file with NPS in Washington, D.C.

Photo 17 of 20

OMAHA UNION STATION**Page 137**

United States Department of the Interior, National Park Service

National Register of Historic Places Registration Form



OMAHA UNION STATION, 1931, MAIN WAITING ROOM (“GREAT HALL”).

ONE OF FOUR ONE-TON BRASS AND FROSTED GLASS TUBE CHANDELIERS.

Omaha Union Station NHL

Omaha Vicinity

Douglas County

View to the northwest

Web Boy Design (Michael Roach), photographer, April 2012.

CD-ROM with TIFF images on file with NPS in Washington, D.C.

Photo 18 of 20

OMAHA UNION STATION**Page 138**

United States Department of the Interior, National Park Service

National Register of Historic Places Registration Form



OMAHA UNION STATION, 1931, THE TRISH AND DICK DAVIDSON GALLERY AT TRACK LEVEL SOUTH OF THE MAIN BUILDING.

NOTE: THE PORTION OF THE BUILDING TO THE RIGHT OF THE STEEL COLUMNS (WITH THE LOCOMOTIVE) IS OUTSIDE THE NHL BOUNDARY.

Omaha Union Station NHL

Omaha Vicinity

Douglas County

View to the east

Web Boy Design (Michael Roach), photographer, April 2012.

CD-ROM with TIFF images on file with NPS in Washington, D.C.

Photo 19 of 20

OMAHA UNION STATION

United States Department of the Interior, National Park Service

National Register of Historic Places Registration Form



THE TRUHLSEN LECTURE HALL IN THE REHABILITATED POWERHOUSE.

Omaha Union Station NHL

Omaha Vicinity

Douglas County

View to the north

Web Boy Design (Michael Roach), photographer, April 2012.

CD-ROM with TIFF images on file with NPS in Washington, D.C.

Photo 20 of 20