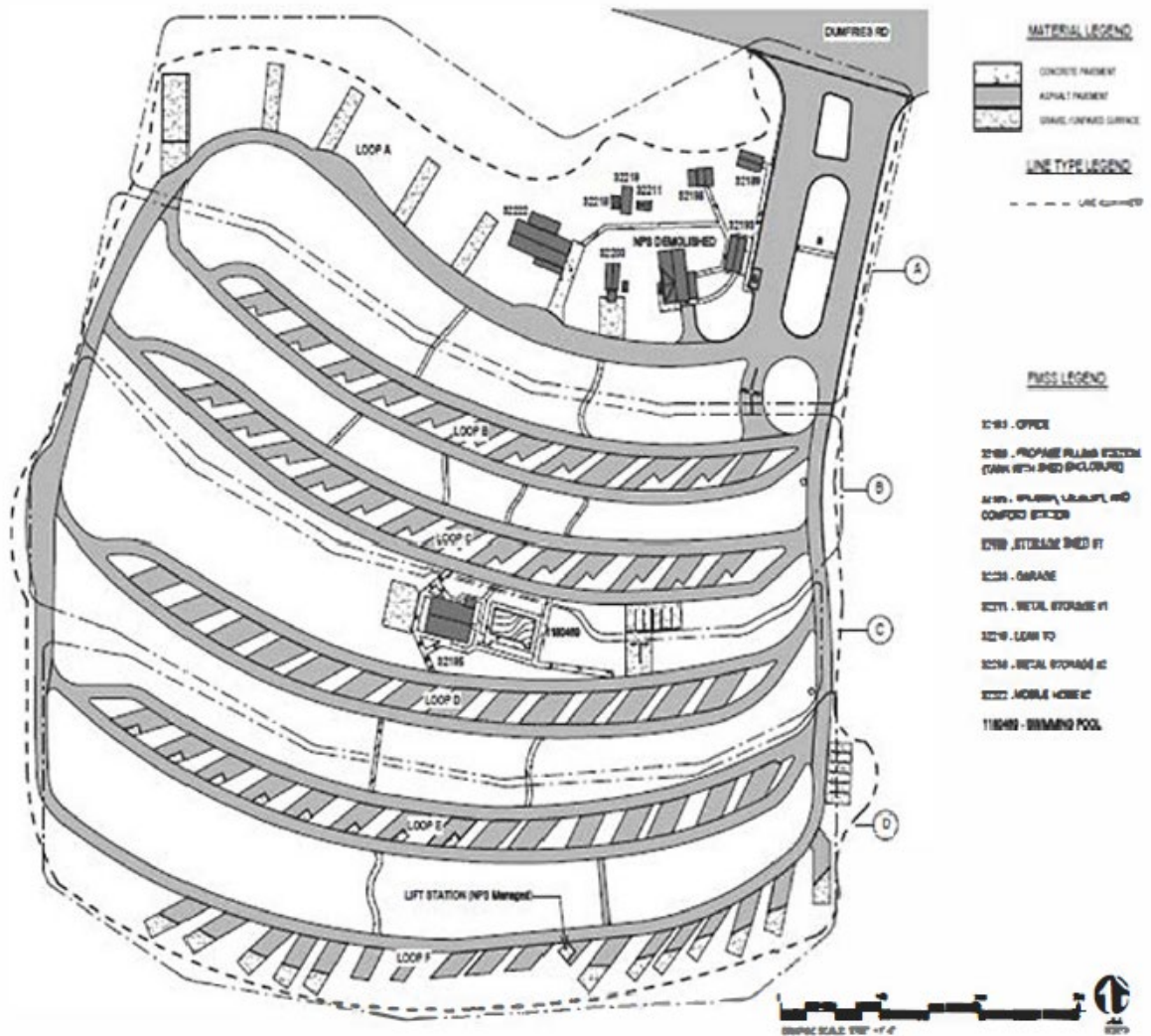


EXHIBIT D

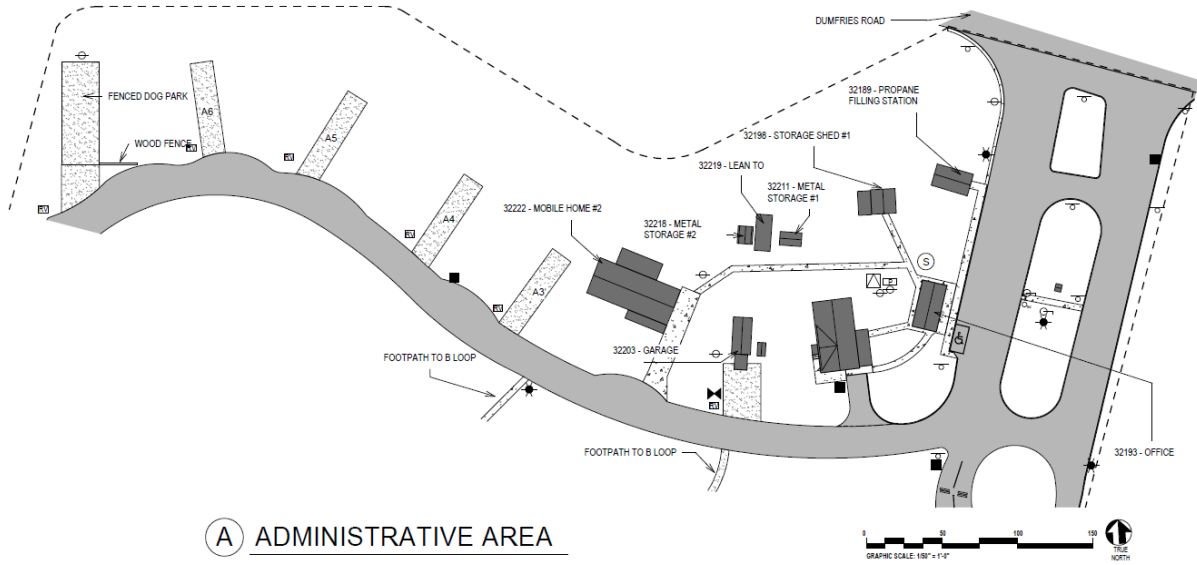
ASSIGNED LAND AND REAL PROPERTY IMPROVEMENTS
(CONCESSION FACILITIES)

Land Assigned

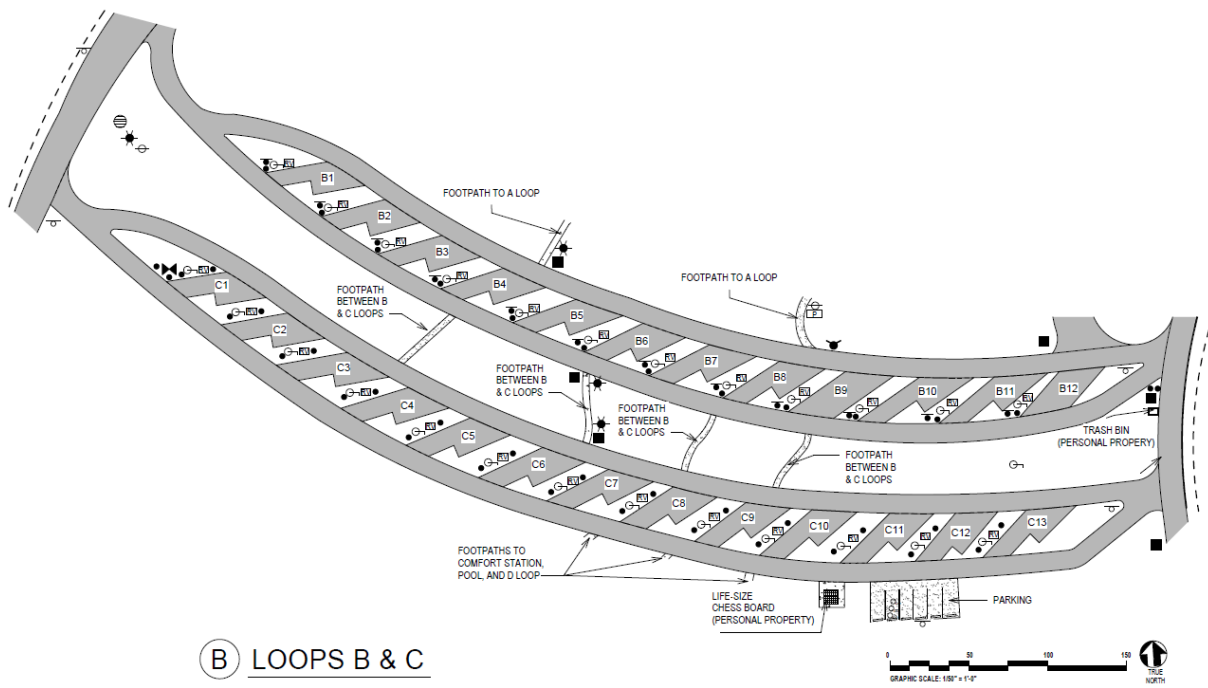
Land is assigned in accordance with the boundaries shown on the following maps:



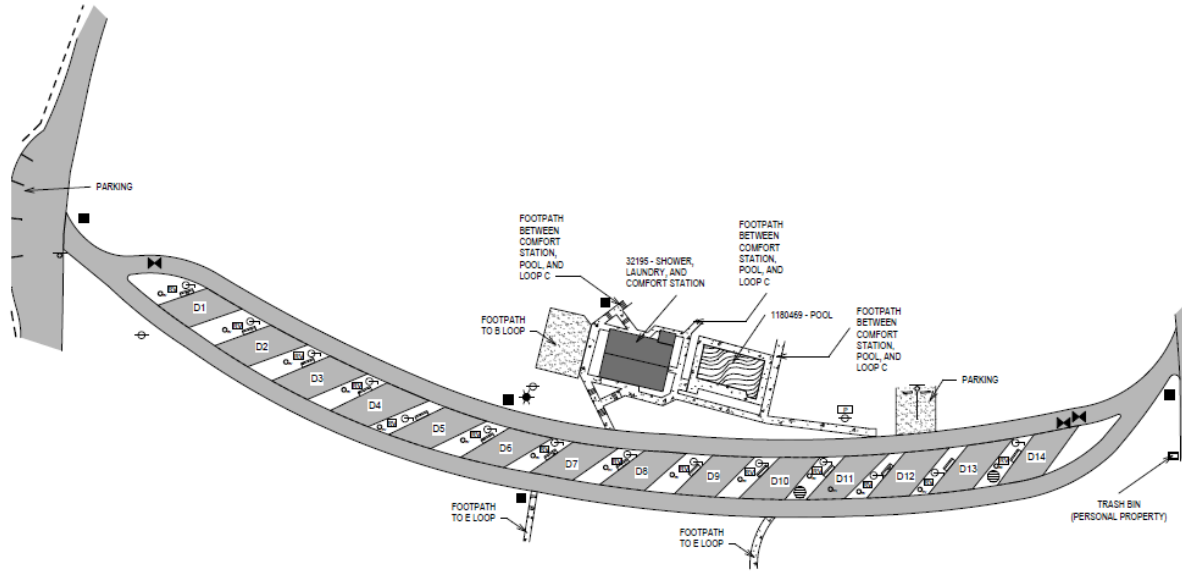
CC-PRWI001-25 LAND ASSIGNMENT



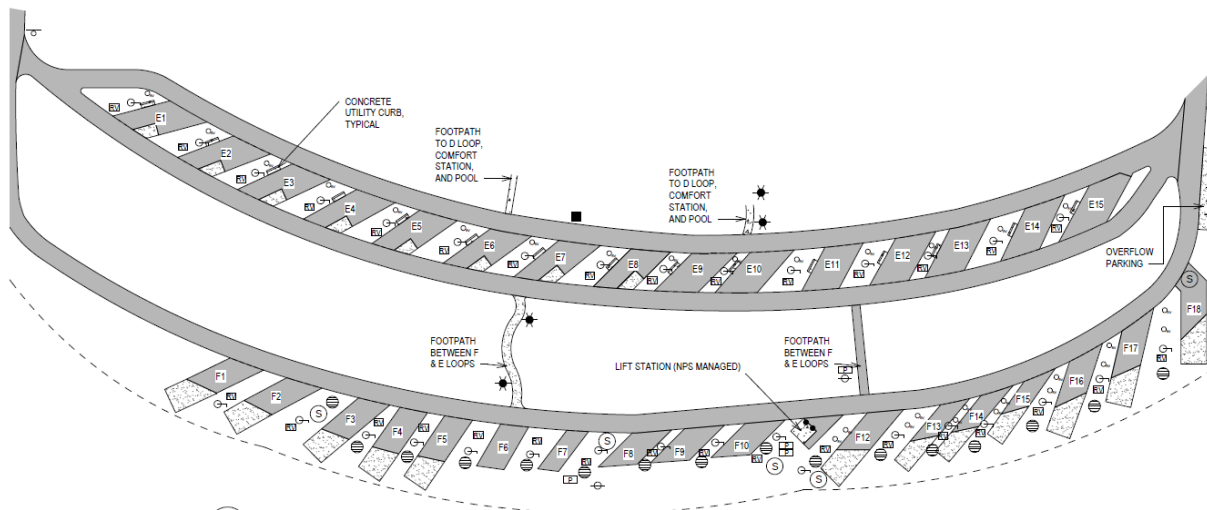
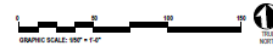
(A) ADMINISTRATIVE AREA



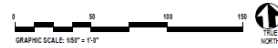
(B) LOOPS B & C



C COMFORT STATION & LOOP D



D LOOPS E & F



Real Property Improvements Assigned

The following real property improvements are assigned to the Concessioner for use in conducting its operations under this Contract:

Asset Number	Asset Description	Quantity	UOM	Insurance Replacement Value
15910	Asphalt-Paved Campsites	1	N/A	\$874,676
32193	Office	414	ft ²	\$39,915
32195	Shower/Laundry/Comfort Station	1,281	ft ²	\$211,714
32198	Storage Shed #1	427	ft ²	\$12,173
1180469	Swimming Pool (33,000 gallons)	1,966	ft ²	N/A*
32203	Garage	372	ft ²	\$12,433
32218	Metal Storage #2	108	ft ²	\$3,776
32219	Lean To	234	ft ²	\$1,955
32211	Metal Storage #1	112	ft ²	\$3,916
32222	Mobile Home #2	1,859	ft ²	\$201,695
32189	Propane Filling Station	240	ft ²	\$6,616

**Please note: The lack of value for an asset in the column for Insurance Replacement Value does not relieve the Concessioner of its obligation to insure the asset according to the terms of this Contract.*

Approved, effective _____, 20__

By: _____

Regional Director
Interior Region 1 – National Capital Area
National Park Service