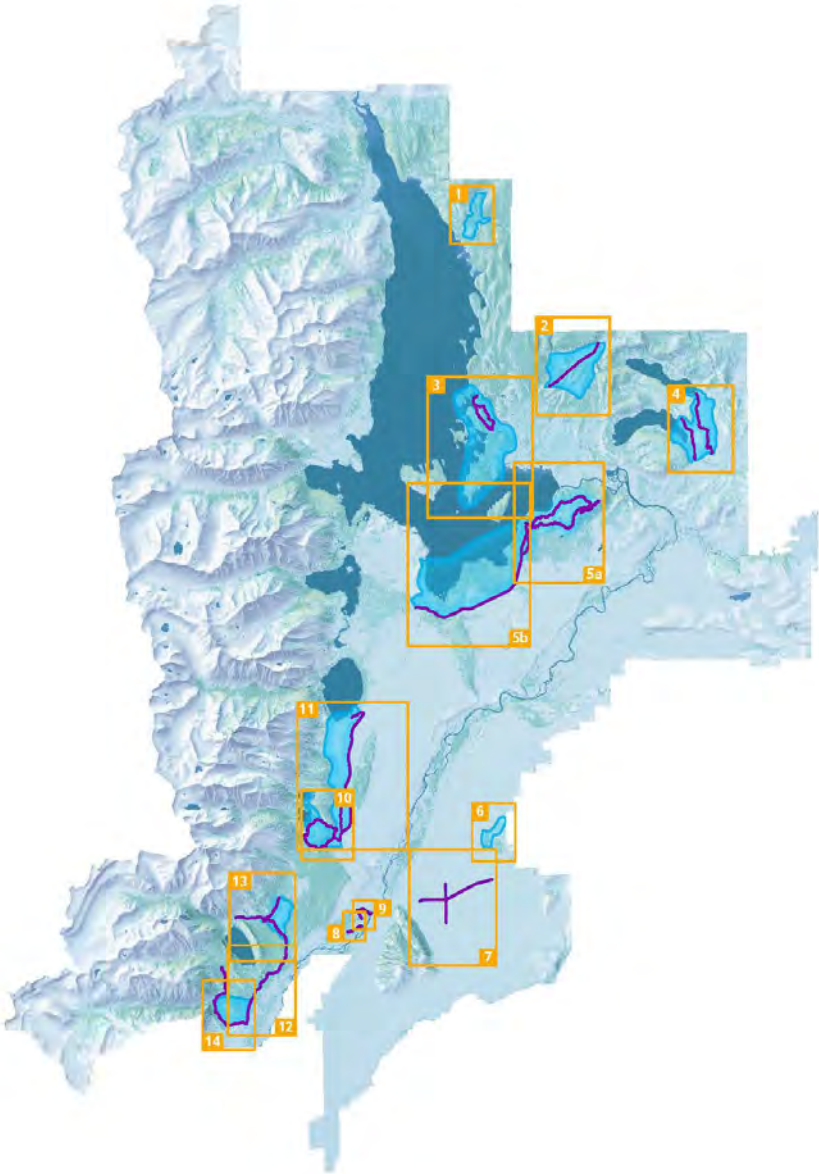


# Ski and Snowshoe Approved Winter Use Routes

GRAND TETON NATIONAL PARK



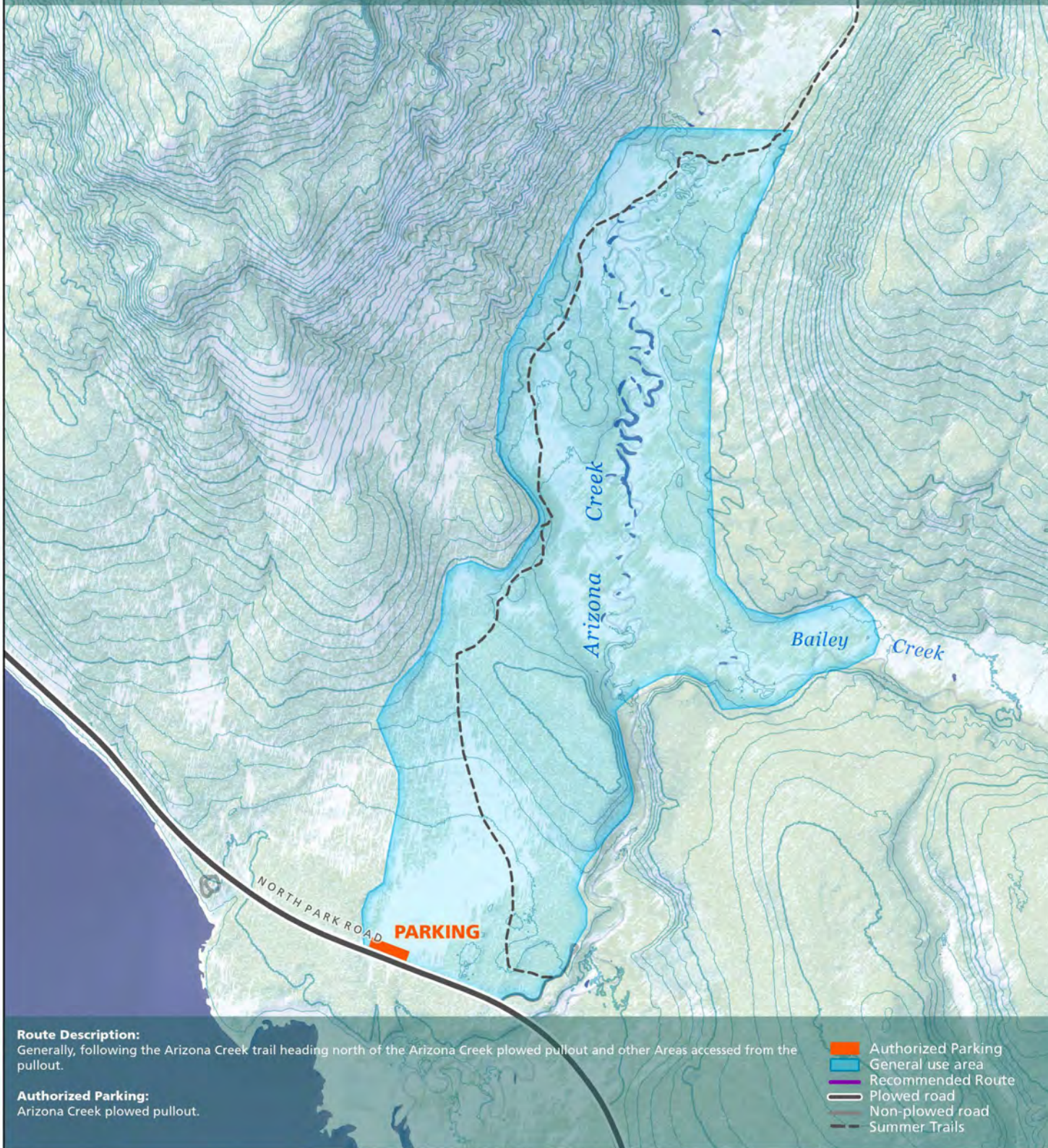
# Grand Teton - Winter Concessioner Ski / Snowshoe Routes

Contracts: GRTE024, GRTE032, GRTE033

National Park Service  
U.S. Department of the Interior



## Route 1: Arizona Creek



### Route Description:

Generally, following the Arizona Creek trail heading north of the Arizona Creek plowed pullout and other Areas accessed from the pullout.

### Authorized Parking:

Arizona Creek plowed pullout.

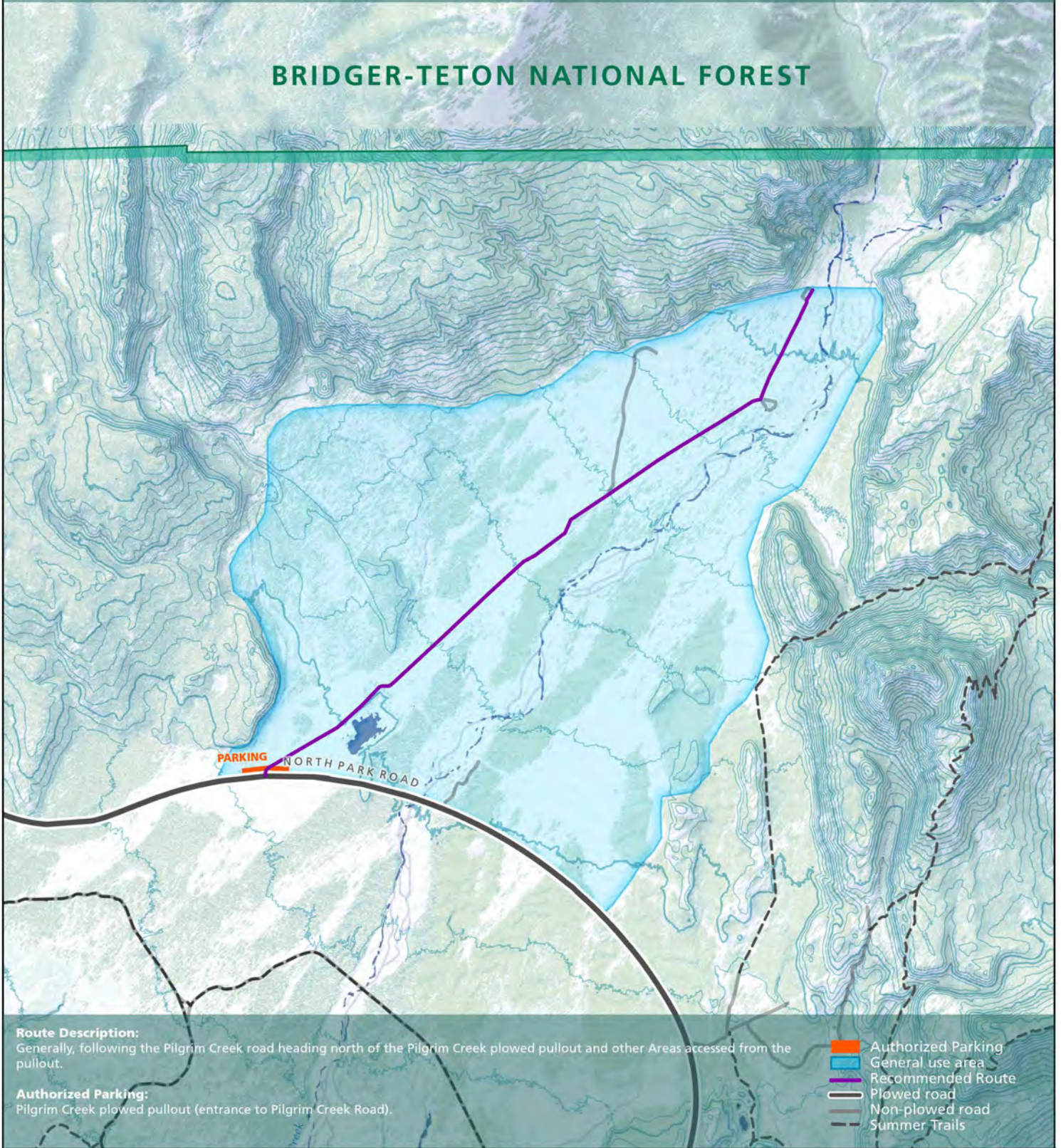
- Authorized Parking
- General use area
- Recommended Route
- Plowed road
- Non-plowed road
- Summer Trails





## Route 2: Pilgrim Creek

### BRIDGER-TETON NATIONAL FOREST



**Route Description:**

Generally, following the Pilgrim Creek road heading north of the Pilgrim Creek plowed pullout and other Areas accessed from the pullout.

**Authorized Parking:**

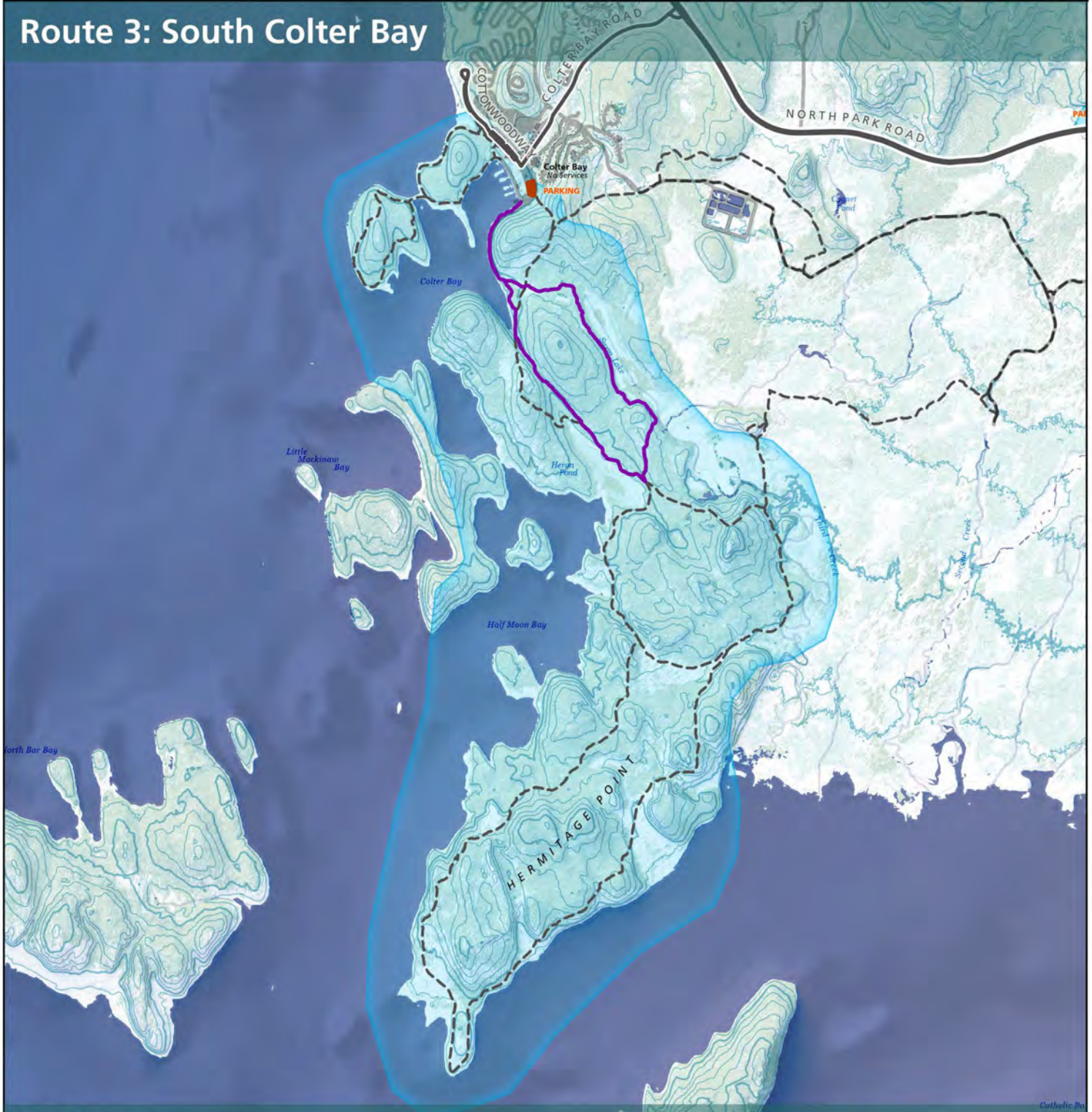
Pilgrim Creek plowed pullout (entrance to Pilgrim Creek Road).

- Authorized Parking
- General use area
- Recommended Route
- Plowed road
- Non-plowed road
- Summer Trails





# Route 3: South Colter Bay



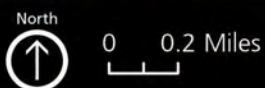
**Route Description:**

Generally, following the summer trails heading south and west of Colter Bay Marina including Hermitage Point Trail, Swan Lake, Heron Pond Trail, Lakeshore Trail, and following the shoreline of Jackson Lake.

**Authorized Parking:**

Colter Bay Visitor Center Parking Area

- Authorized Parking
- General use area
- Recommended Route
- Plowed road
- Non-plowed road
- Summer Trails



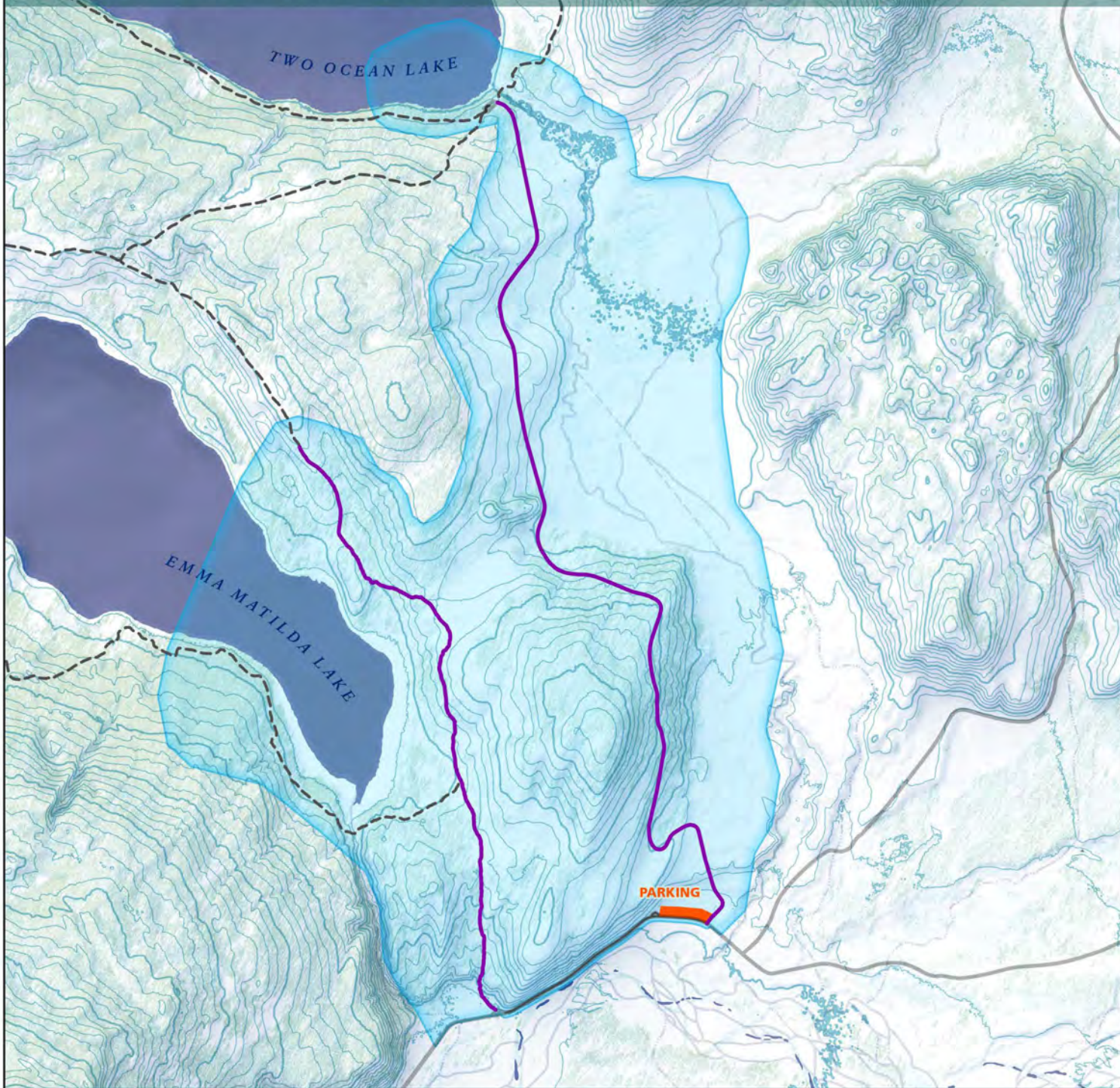
# Grand Teton - Winter Concessioner Ski / Snowshoe Routes

Contracts: GRTE024, GRTE032, GRTE033

National Park Service  
U.S. Department of the Interior



## Route 4: Two Ocean Lake



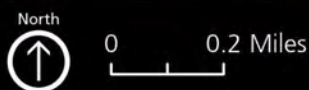
### Route Description:

Generally, following the Two Ocean Road or Emma Matilda Lake Loop Trail and other areas north of Pacific Creek Road accessed from the pullout, not including, avalanche terrain, Forest Service lands, or private lands.

### Authorized Parking:

Two Ocean Road plowed pullout (entrance to Two Ocean Road).

- Authorized Parking
- General use area
- Recommended Route
- Plowed road
- Non-plowed road
- Summer Trails



GRTE GIS  
Projection: NAD83 UTM Zone 12N  
NPS Park Data, NAIP, NHD, 20 foot contours based on 2014 Lidar

# Grand Teton - Winter Concessioner Ski / Snowshoe Routes

Contracts: GRTE024, GRTE032, GRTE033

National Park Service  
U.S. Department of the Interior



## Route 5a: Signal Mountain



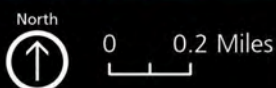
### Route Description:

Generally, areas accessed from the Teton Park Road and following the Signal Mountain Road or summer trail. Route also includes following the shoreline of Jackson Lake south of Signal Mountain Resort as far as Spalding Bay.

### Authorized Parking:

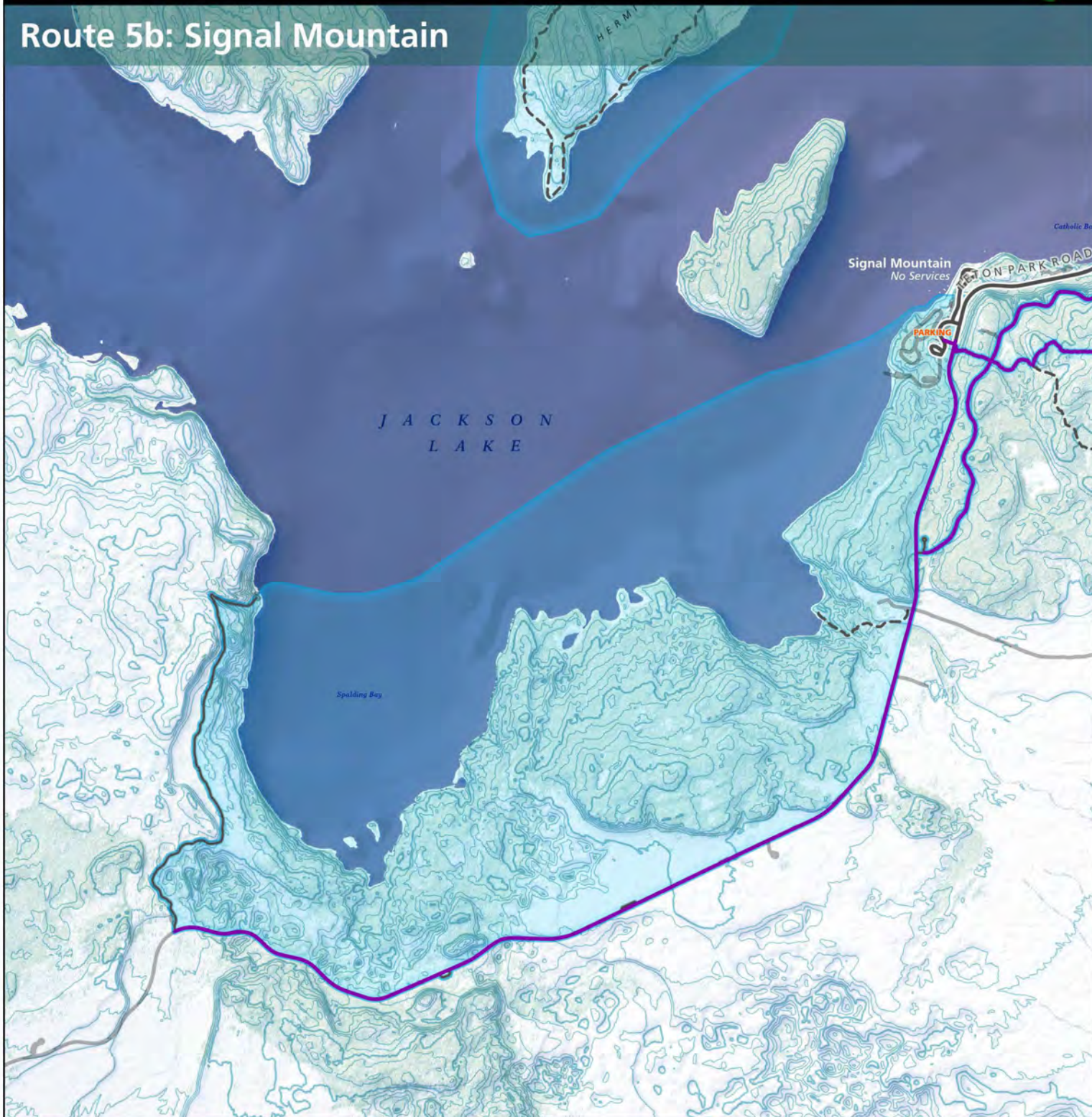
North of the north gate on Teton Park Road. Must not block the gate.

- Authorized Parking
- General use area
- Recommended Route
- Plowed road
- Non-plowed road
- Summer Trails





## Route 5b: Signal Mountain



### Route Description:

Generally, areas accessed from the Teton Park Road and following the Signal Mountain Road or summer trail. Route also includes following the shoreline of Jackson Lake south of Signal Mountain Resort as far as Spalding Bay.

### Authorized Parking:

North of the north gate on Teton Park Road. Must not block the gate.

- Authorized Parking
- General use area
- Recommended Route
- Plowed road
- Non-plowed road
- Summer Trails

North

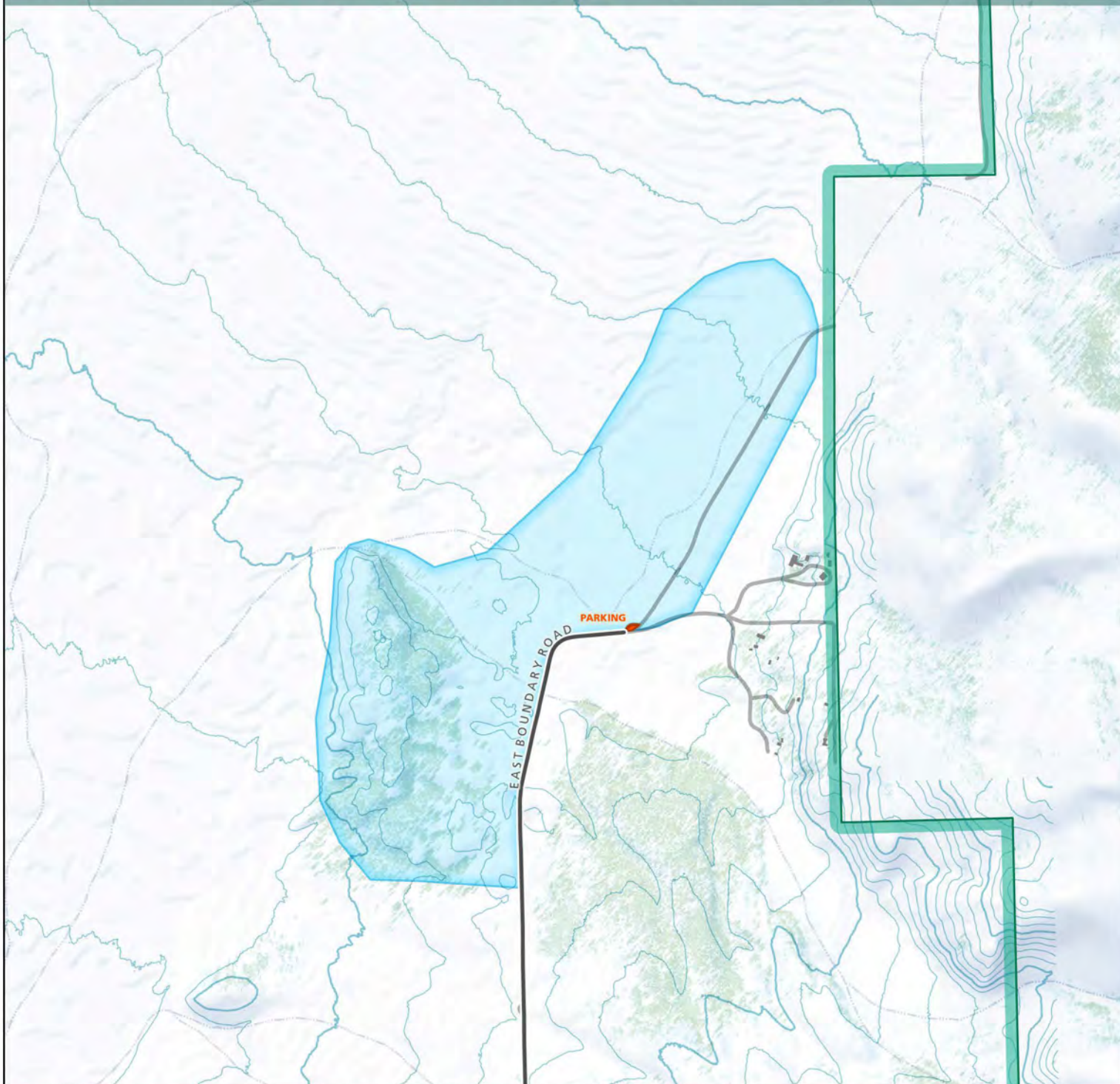


0 0.2 Miles





## Route 6: East Boundary / Shadow Mountain



### Route Description:

Generally, following the East Boundary Road north of the parking area and other Areas accessed from the parking area, not including Forest Services lands.

### Authorized Parking:

East Boundary Road/ Shadow Mountain access plowed parking area

- Authorized Parking
- General use area
- Recommended Route
- Plowed road
- Non-plowed road
- Summer Trails

North



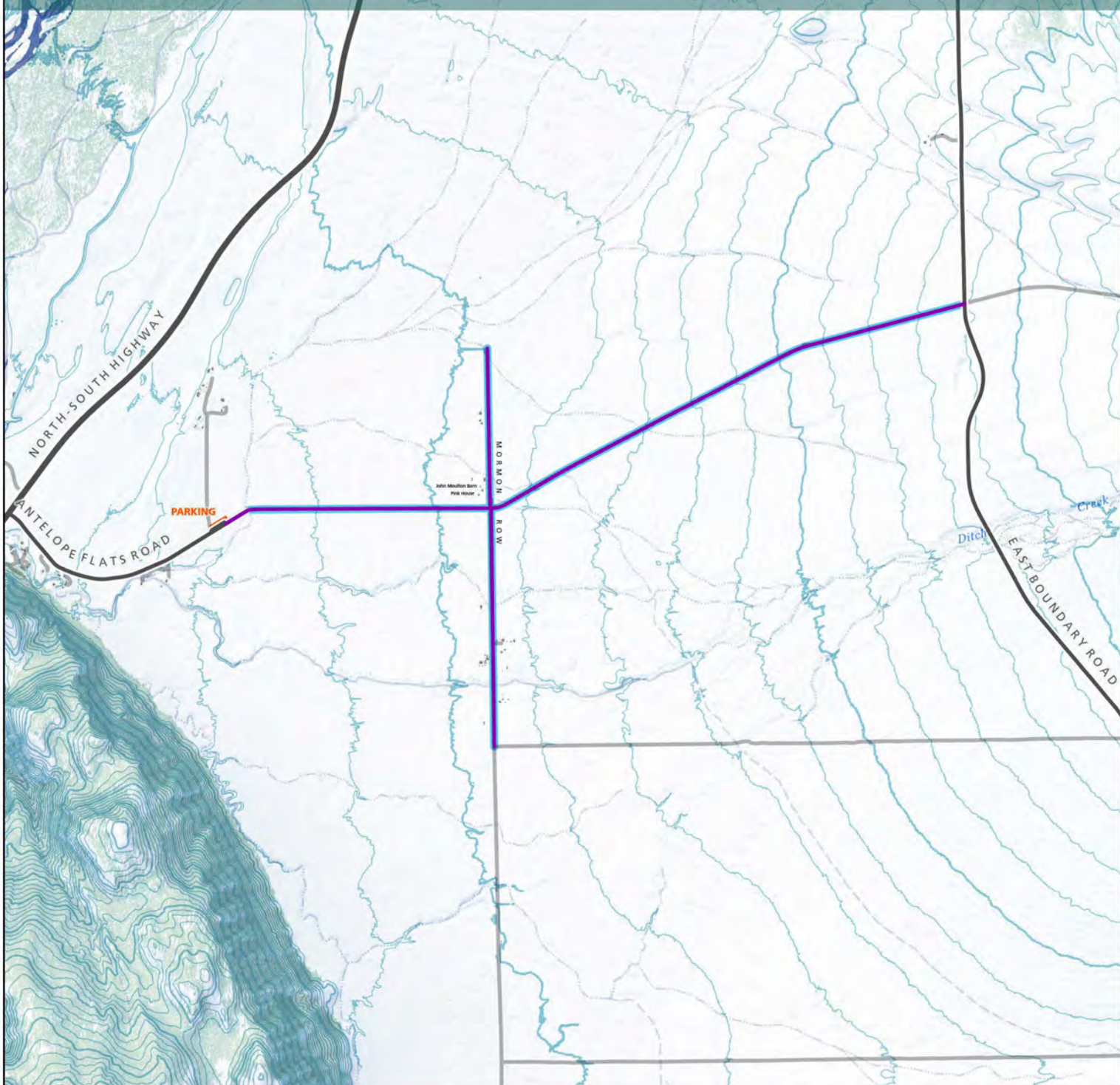
0 0.2 Miles







## Route 7: Mormon Row



### Route Description:

Specifically, following the Antelope Flats Road corridor, which is defined at the area between snow poles. Route open when Antelope Flats Road is closed to vehicle traffic and closed March 31 or when opened to vehicle traffic, whichever comes first.

### Authorized Parking:

Craighead Lane parking area on west side of Antelope Flats Road closure. One vehicle at a time per contract.

- Authorized Parking
- General use area
- Recommended Route
- Plowed road
- Non-plowed road
- Summer Trails



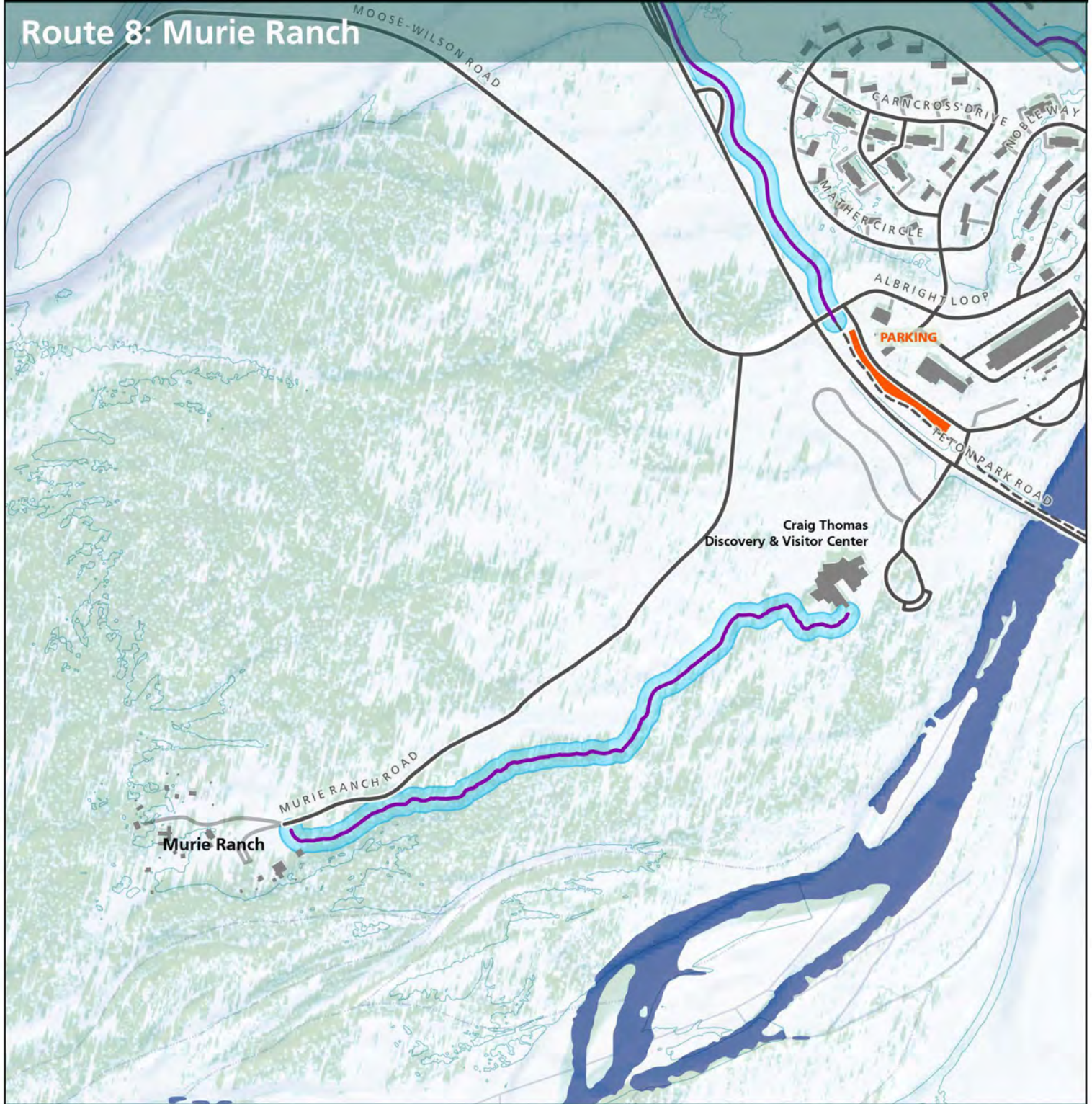
# Grand Teton - Winter Concessioner Ski / Snowshoe Routes

Contracts: GRTE024, GRTE032, GRTE033

National Park Service  
U.S. Department of the Interior



## Route 8: Murie Ranch



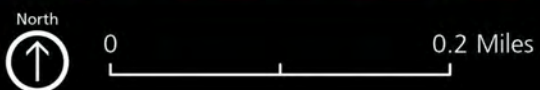
### Route Description:

Specifically, following within approximately 25 feet of the summer trail between the Craig Thomas Discovery and Visitor Center and the Murie Ranch. Routes below the river bench (near the river) are not authorized.

### Authorized Parking:

South side of Moose Post Office parking area.

- Authorized Parking
- General use area
- Recommended Route
- Plowed road
- Non-plowed road
- Summer Trails





## Route 9: Menor's Ferry Historic District



**Route Description:** Specifically, traveling north from the Moose Post Office approximately along the multi-use pathway to the Chapel of Transfiguration Road and following the road and pathway corridors to the Historic District. Routes through the Moose Headquarters Administrative and Residential areas are not authorized.

**Authorized Parking:** South side of Moose Post Office parking area.

- Authorized Parking
- General use area
- Recommended Route
- Plowed road
- Non-plowed road
- Summer Trails





## Route 10: Taggart Lake



### Route Description:

Generally, following the summer trail to Taggart and Bradley Lakes. Includes the Taggart Lake loop trail and the Valley Trail south of Taggart Lake, not including avalanche terrain.

### Authorized Parking:

Taggart Lake/Cottonwood Creek Picnic Area. No more than three (3) vehicles per contract at one time.

- Authorized Parking
- General use area
- Recommended Route
- Plowed road
- Non-plowed road
- Summer Trails

North

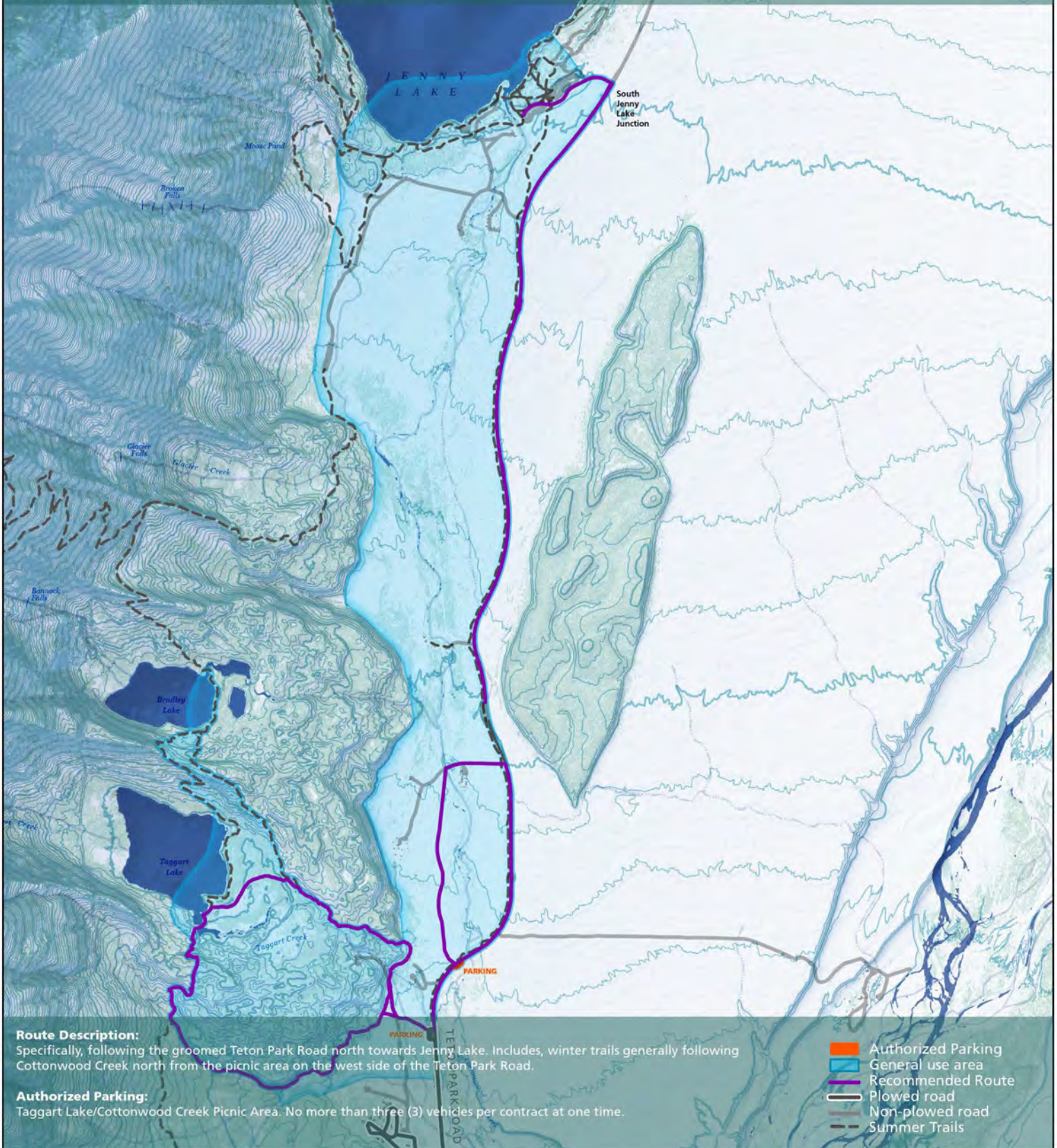


0 0.2 Miles





## Route 11: Teton Park Road



### Route Description:

Specifically, following the groomed Teton Park Road north towards Jenny Lake. Includes, winter trails generally following Cottonwood Creek north from the picnic area on the west side of the Teton Park Road.

### Authorized Parking:

Taggart Lake/Cottonwood Creek Picnic Area. No more than three (3) vehicles per contract at one time.

- Authorized Parking
- General use area
- Recommended Route
- Plowed road
- Non-plowed road
- Summer Trails

North

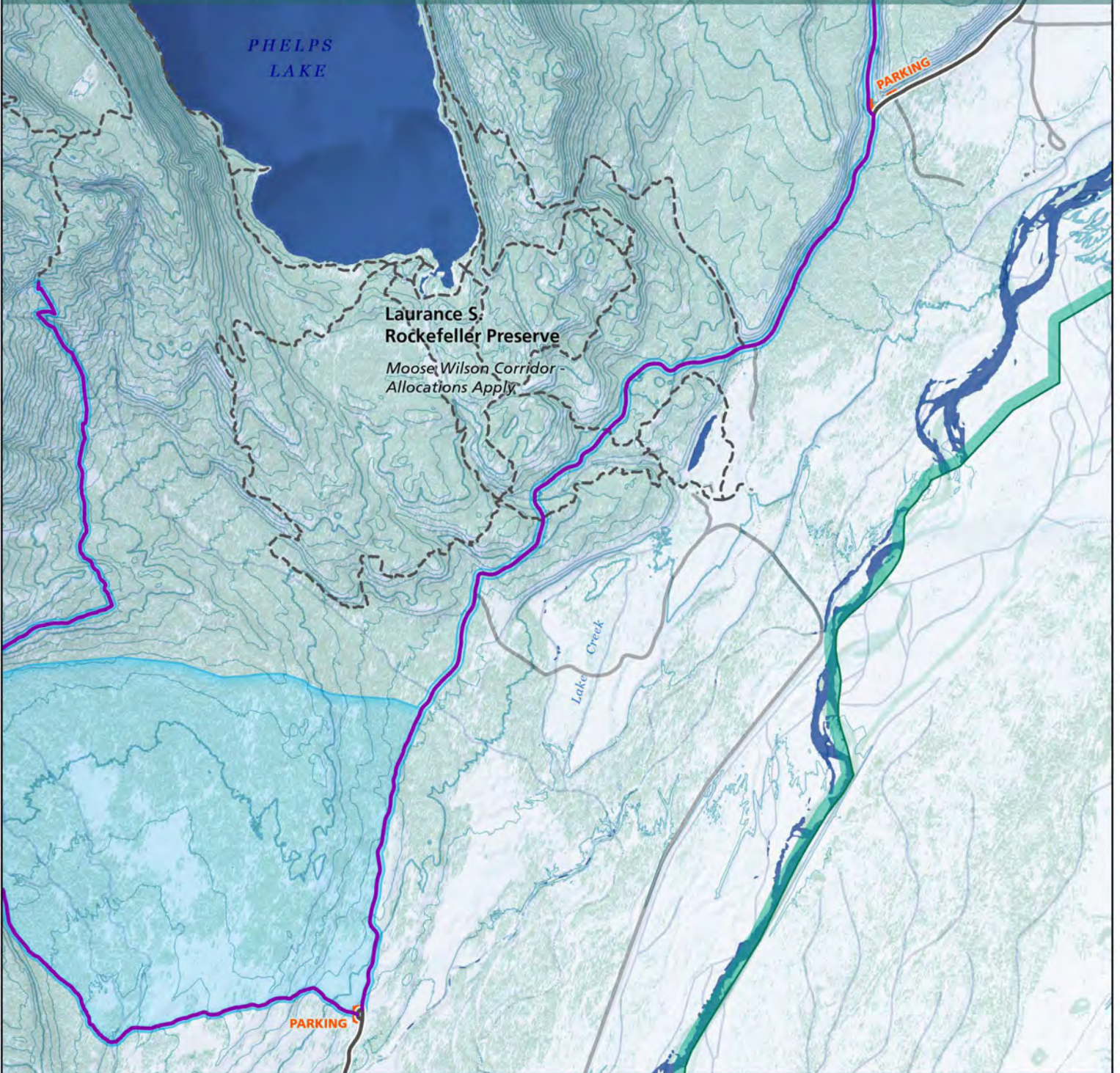


0 0.2 Miles





# Route 12: Moose Wilson Road



Laurance S.  
Rockefeller Preserve

Moose Wilson Corridor -  
Allocations Apply

PHELPS  
LAKE

Lake  
Creek

PARKING

PARKING

**Route Description:**

Specifically, following the closed section of Moose-Wilson road south from the closure. Routes off the road within the Laurance S. Rockefeller Preserve are not authorized. \*Subject to Moose-Wilson Use Allocation

**Authorized Parking:**

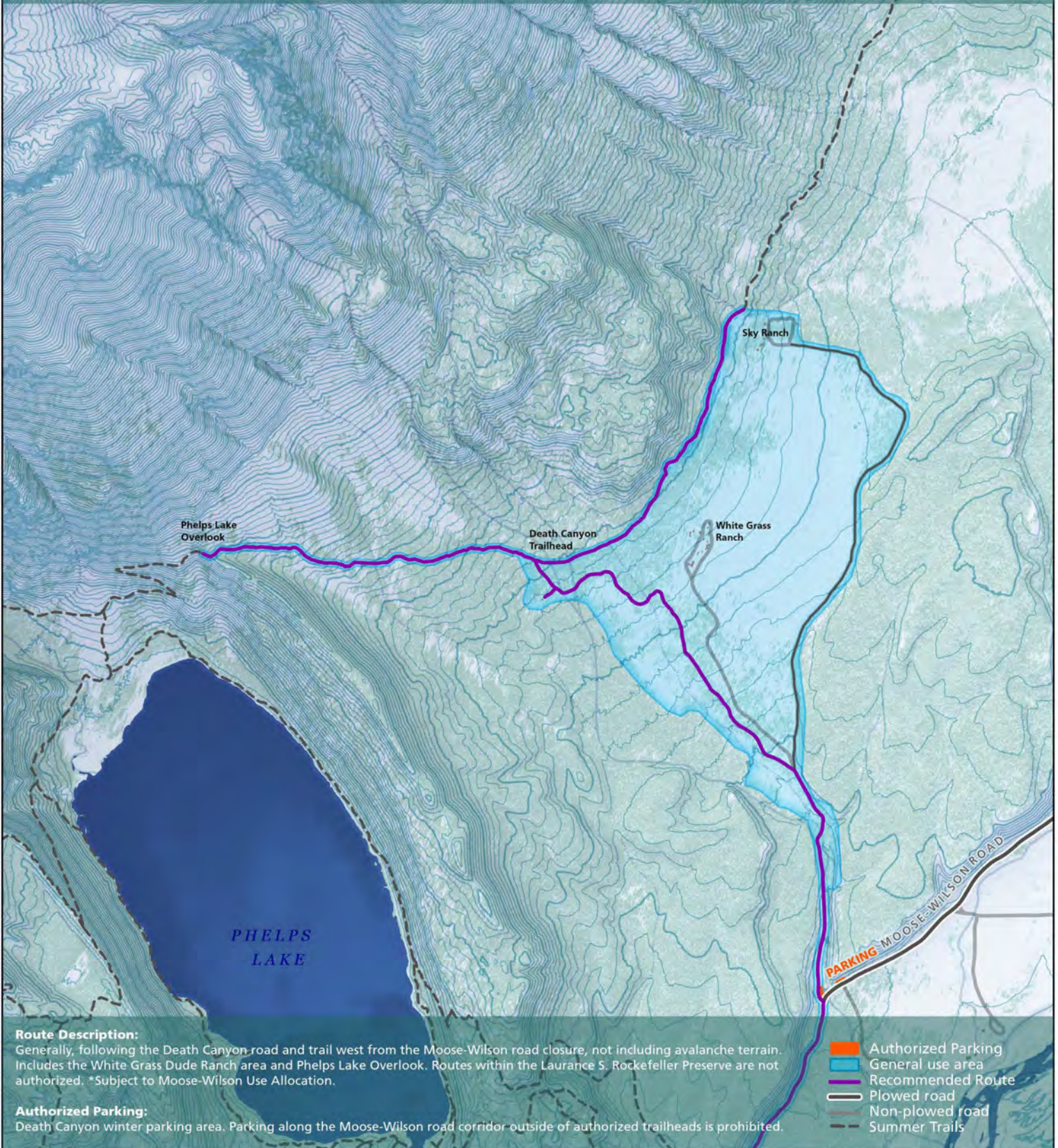
Death Canyon or Granite Canyon winter parking areas. Parking along the Moose-Wilson road corridor outside of authorized trailheads is prohibited.

- Authorized Parking
- General use area
- Recommended Route
- Plowed road
- Non-plowed road
- Summer Trails



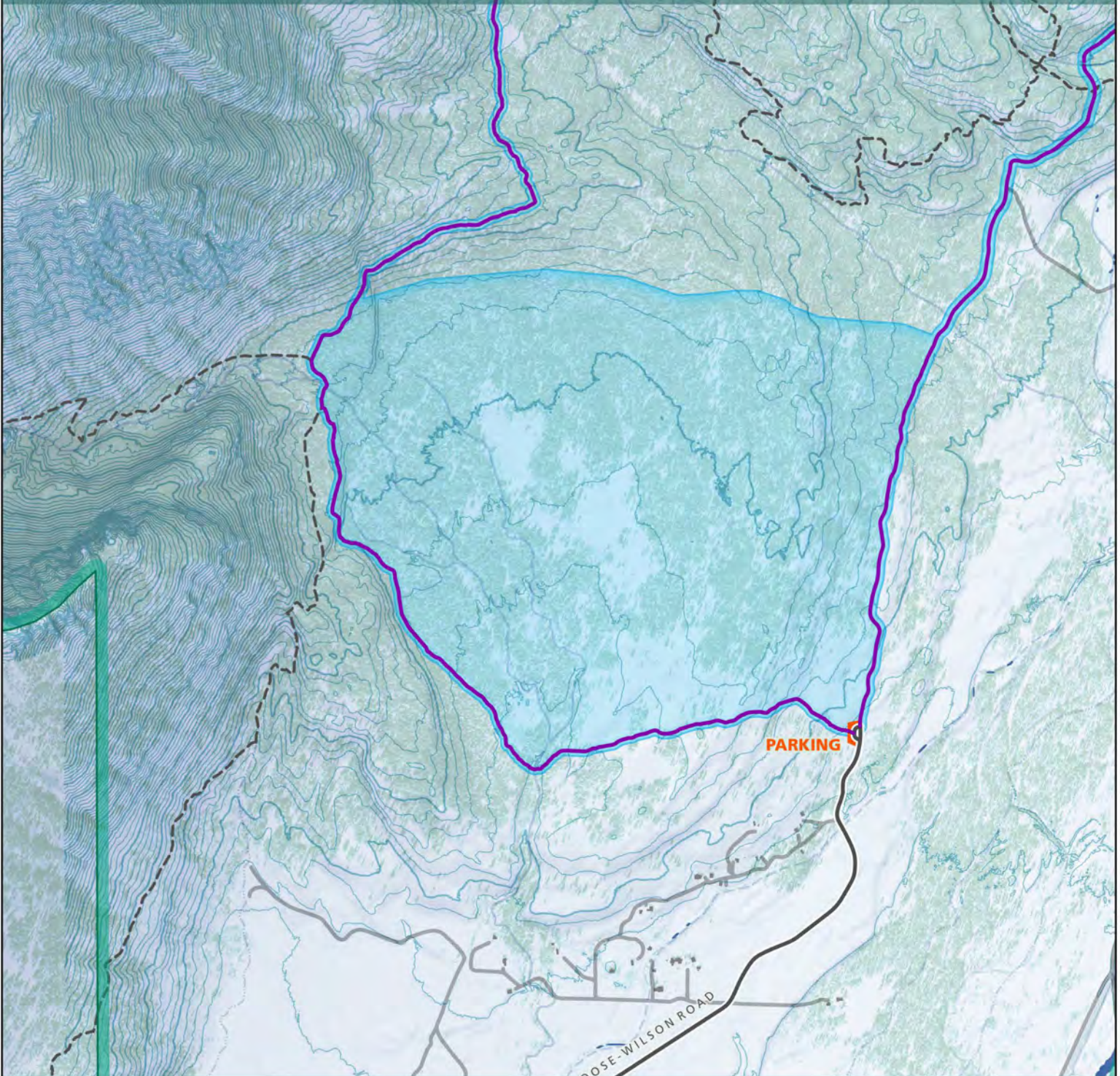


## Route 13: Death Canyon





## Route 14: Granite Canyon Trailhead



### Route Description:

Generally, areas accessed from the Granite Canyon Trailhead. Includes the Valley Trail and spur trails. Routes west from the junction of the Granite Canyon trail and Valley trail are not authorized due to avalanche terrain. \*Subject to Moose-Wilson Use Allocation.

### Authorized Parking:

Granite Canyon Trailhead

- Authorized Parking
- General use area
- Recommended Route
- Plowed road
- Non-plowed road
- Summer Trails

