



## Climate Change Communication in National Parks

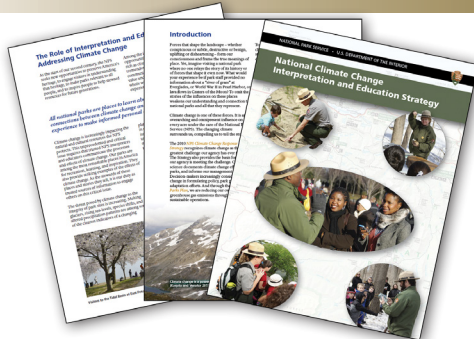
### Background

The National Park Service (NPS) is ideally positioned to advance public dialogue on climate change. The diversity of NPS sites provides unparalleled opportunities to explore the issue across space and time, and parks serve as living laboratories where the effects of climate change can be readily observed or demonstrated. The NPS is committed to engaging visitors, communities, stakeholders, and partners on this critical issue, and inspiring positive action that secures the best possible future for parks and people.

The 2010 *NPS Climate Change Response Strategy* recognizes communication efforts as essential, and the Climate Change Response Program (CCRP) helps advance several goals, including:

- Use innovative techniques and engagement practices to connect with our audiences, encourage public involvement, and inspire personal action
- Showcase NPS efforts and investments in adapting to and mitigating climate change
- Develop and implement training that will ensure our workforce has the most up-to-date knowledge, skills, and tools to address climate change

### Interpretation and Education



In 2016, the CCRP released the *National Climate Change Interpretation and Education Strategy* to guide service-wide efforts. The strategy sets forth a framework by which parks and programs can integrate climate change topics into existing programming. Beyond planning, the CCRP facilitates climate change interpretation in the field through:

- Development and delivery of interpretive training opportunities
- Development of place-based interpretive media
- Development and delivery of place-based opportunities for the K-12 education community



Wayside exhibits recently installed at Golden Gate National Recreation Area are part of a service-wide project to interpret sea level rise. The waysides incorporate novel elements that help visitors visualize what projected levels of rise might mean to park areas. NPS Image by Will Elder.

### Communication Products

The CCRP maintains a wide range of formal and informal channels of communication that serve a variety of audiences, including:

- The National Park Service *climate change subject site*
- A webinar series featuring climate change experts speaking on topics relevant to parks
- A monthly newsletter to share climate-related activities from NPS central offices, regions, programs, and parks
- *Online videos*, briefing statements, and a self-study training module for interpreting climate change
- An online community of practice for park interpreters
- High-level, quality trainings available for staff and volunteers in a variety of positions
- Media and public information services in support of science communications
- *Funded internship opportunities* in park interpretation and education operations

### More Information

Larry Perez  
Communications Coordinator  
Climate Change Response Program

ph: (970) 267-2136  
email: Larry\_Perez@nps.gov

Cat Hawkins Hoffman  
Chief  
Climate Change Response Program

ph: (970) 225-3567  
email: Cat\_Hawkins\_Hoffman@nps.gov

<http://www.nps.gov/climatechange>