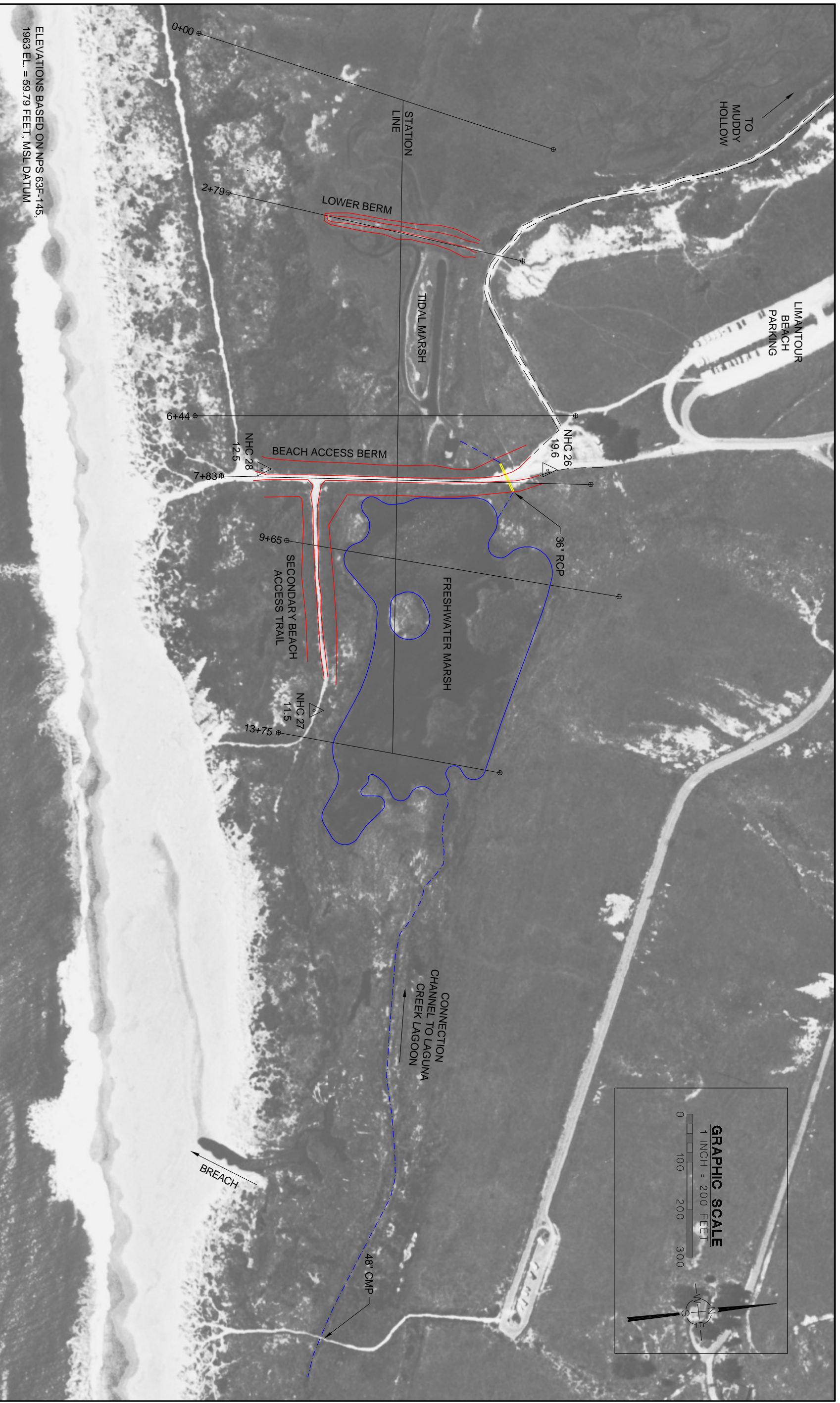


Figure 1. Site Locations

nhc

Point Reyes National Seashore
Coastal Watershed Restoration Project

Coastal Watershed Restoration Program –
Geomorphic Restoration Project - Environmental Assessment
Figure 1.1



ELEVATIONS BASED ON NPS 63F-145,
1963 EL. = 59.79 FEET, MSL DATUM

Figure 21. Limantour Beach Marsh Existing Conditions Site Plan



ELEVATIONS BASED ON NPS 63F-145,
1963 EL. = 59.79 FEET, MSL DATUM

Figure 24. Alternative 2 and Alternative 3: Limantour Beach Marsh Restoration Plan

nhc
Point Reyes National Seashore
Coastal Watershed Restoration Project

Coastal Watershed Restoration Program –
Geomorphic Restoration Project - Environmental Assessment
Figure 2.2

ELEVATIONS BASED ON NPS 63F-161,
1963 EL. = 92.96 FEET, MSL DATUM.

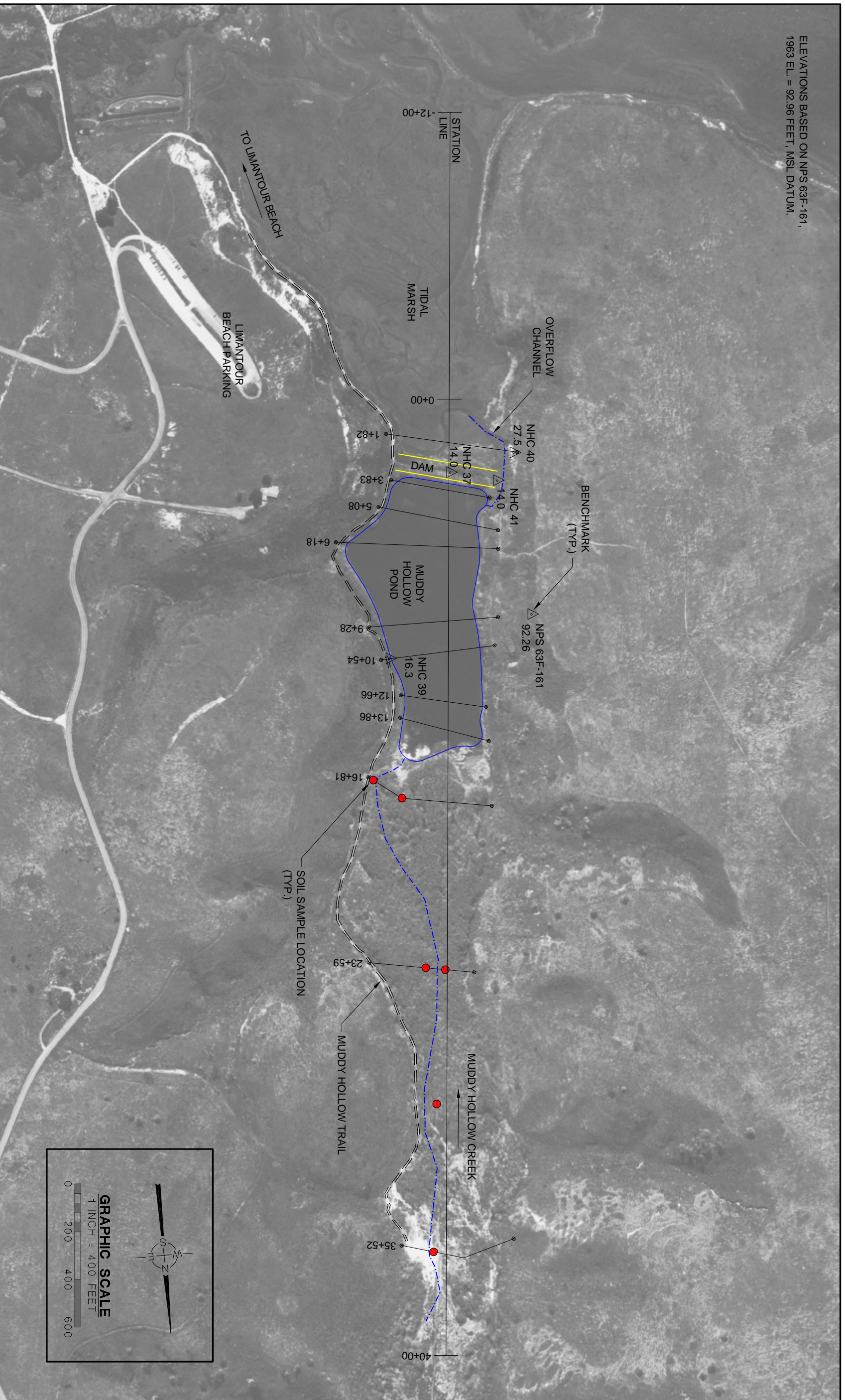


Figure 3. Muddy Hollow Creek Existing Conditions Site Plan

nhc
Point Reyes National Seashore
Coastal Watershed Restoration Project

Coastal Watershed Restoration Program –
Geomorphic Restoration Project - Environmental Assessment
Figure 2-3

ELEVATIONS BASED ON NPS 63F-161,
1963 EL. = 92.96 FEET, MSL DATUM.

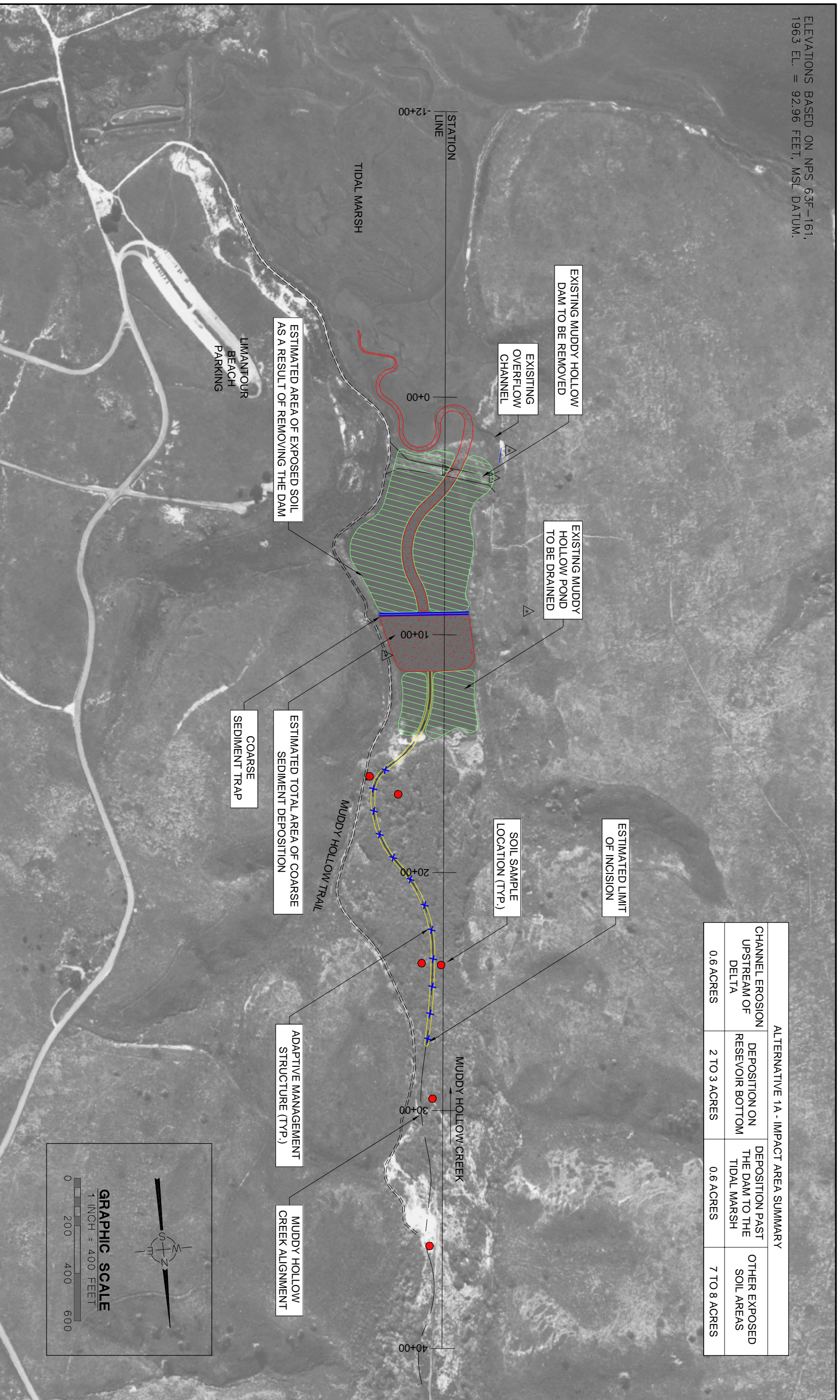
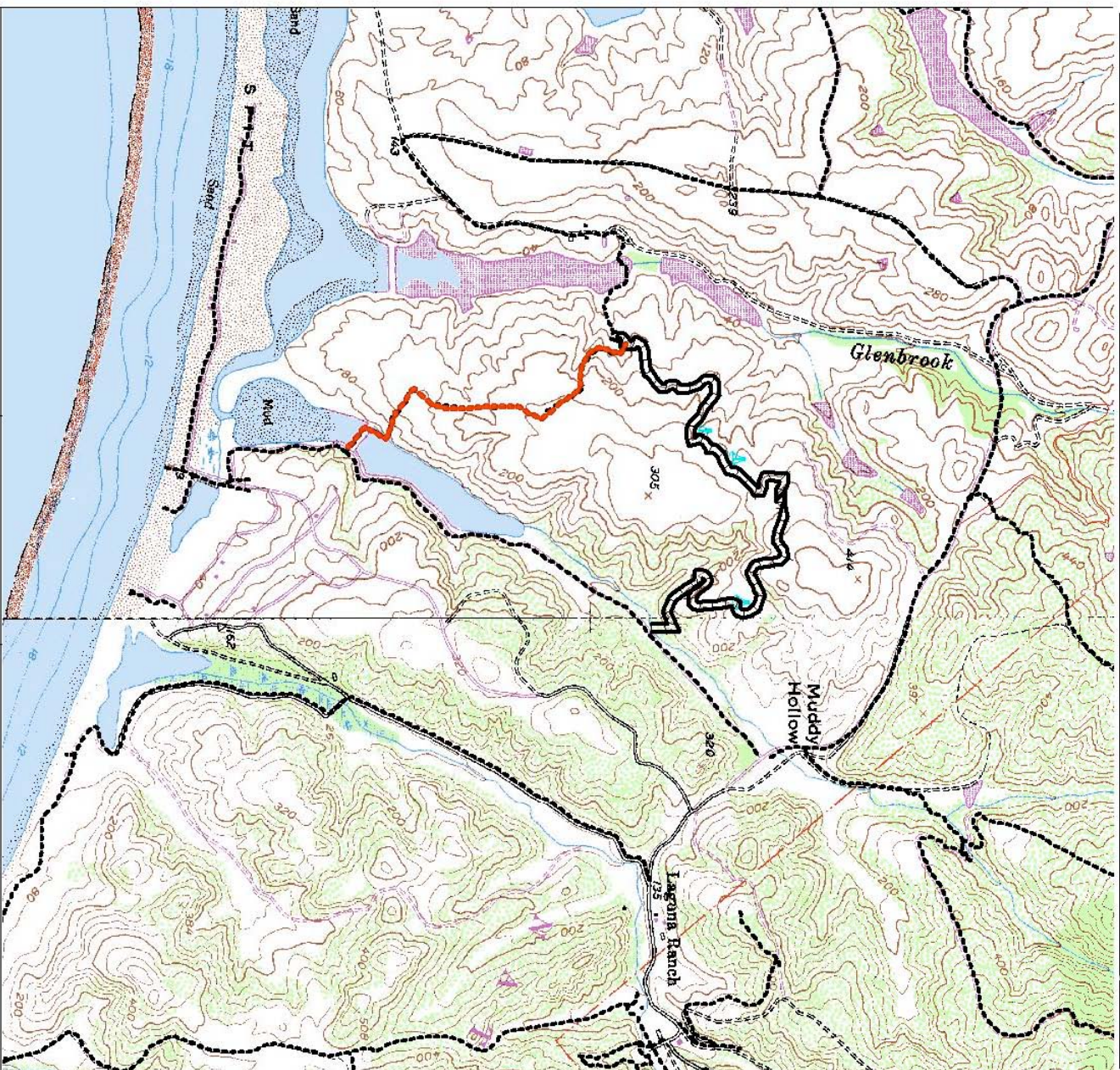


Figure 7. Alternative 1A: Muddy Hollow Creek Restoration Site Plan - Erosion and Deposition Areas with Adaptive Management

Coastal Watershed Project - Geomorphic Restoration Estero Trail Reroute Buffer



- Existing Trails
- Estero Reroute Planning Area
- Former Estero Trail

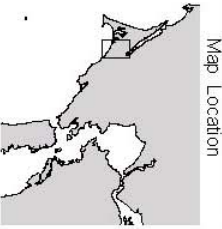


Figure 2-5
National Park Service
Point Reyes National Seashore
Natural Resources

1000 0 1000 2000 3000 Feet
1 : 24,000 1 inch = 2000.00 feet



Figure 12. Glenbrook Crossing Existing Conditions Site Plan

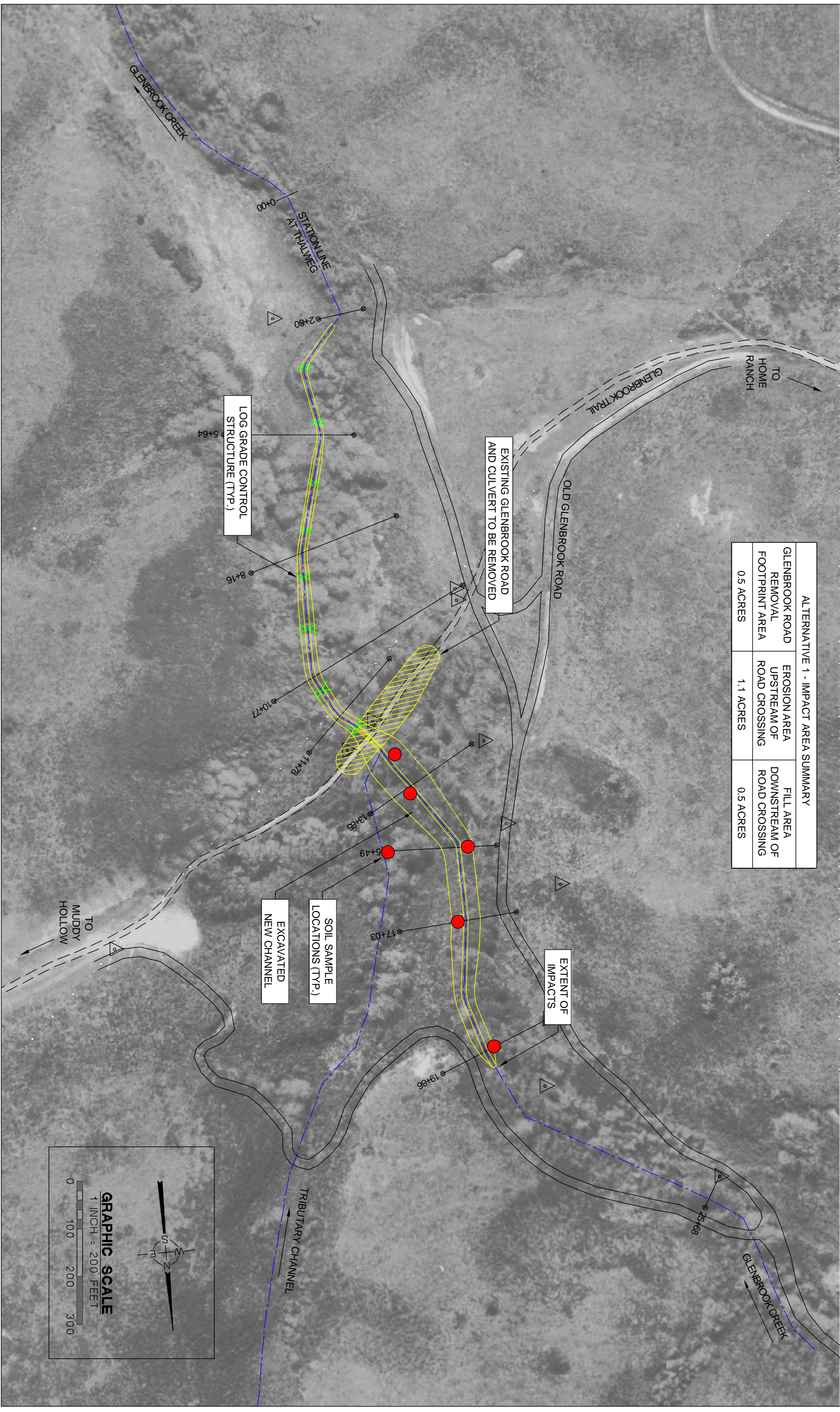


Figure 15. Alternative 1: Glenbrook Crossing Restoration Site Plan - Channel Development

Coastal Watershed Project - Geomorphic Restoration Muddy Hollow Trail Reroute Buffer

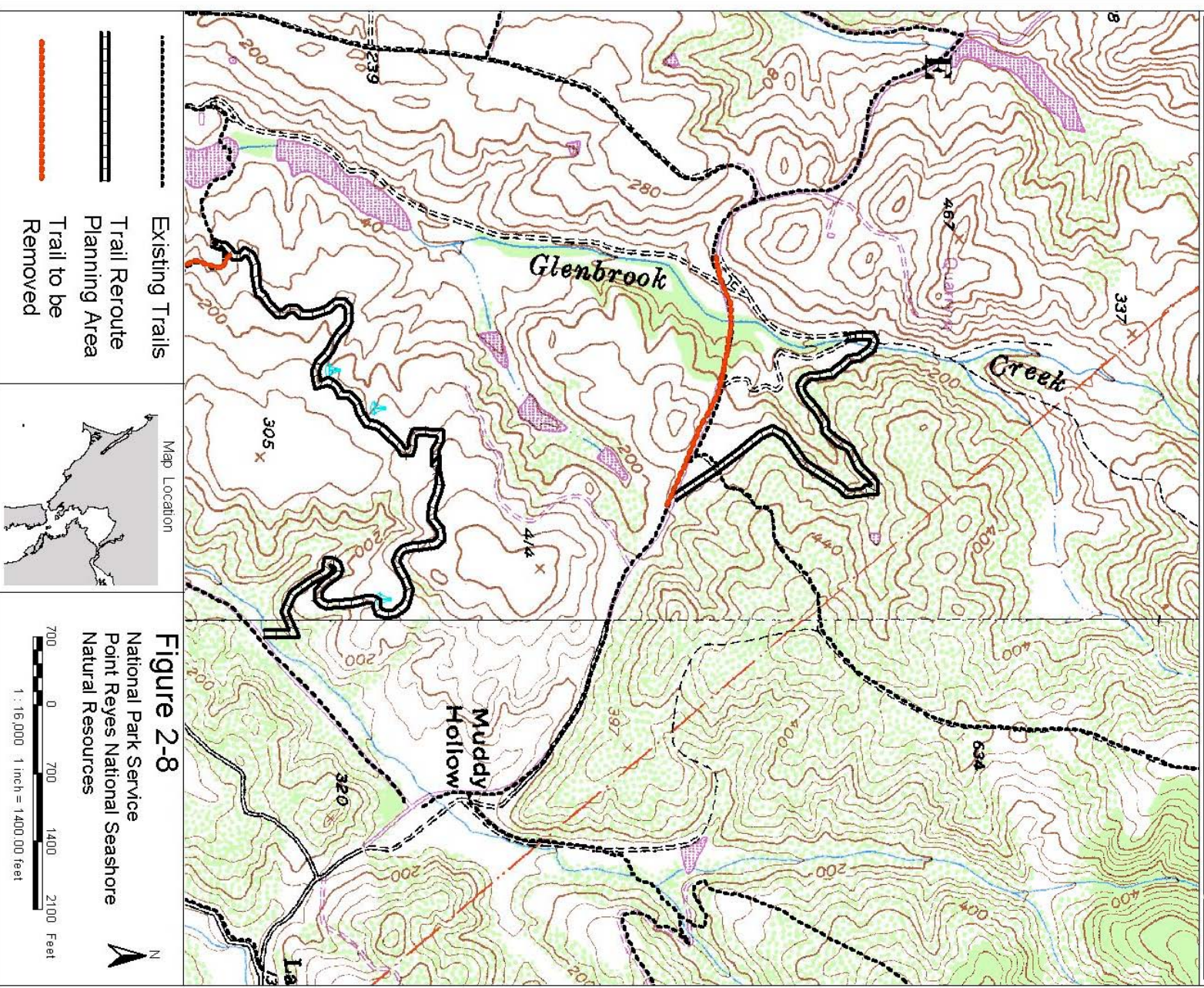


Figure 2-8
National Park Service
Point Reyes National Seashore
Natural Resources

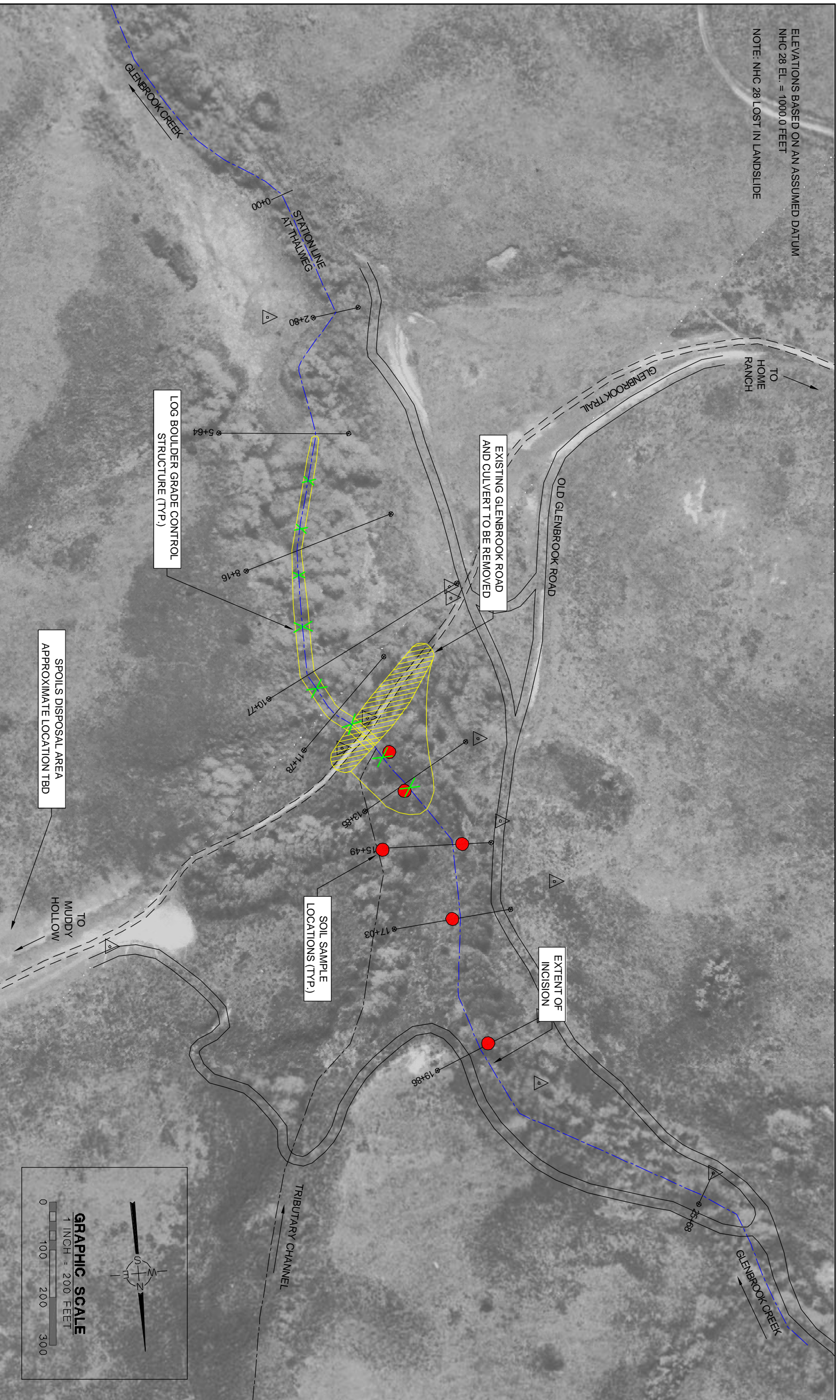


Figure 18. Alternative 2: Glenbrook Crossing Restoration Site Plan - Channel Development