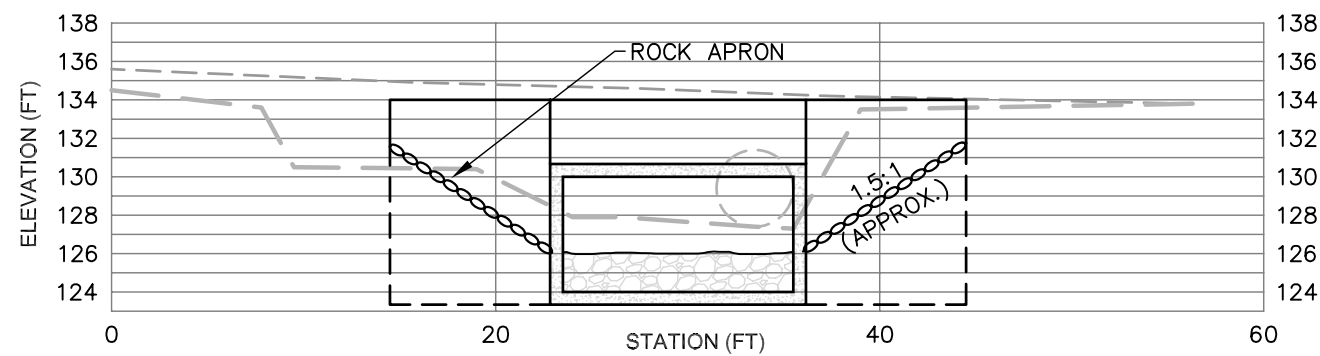


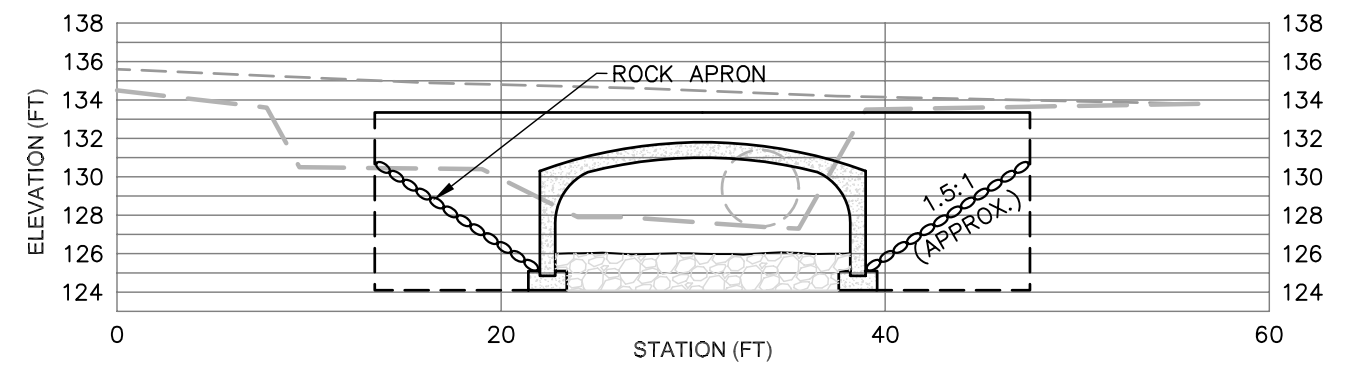
PROPOSED CHANNEL PROFILE

SCALES: H 1"=20' V 1"=5'



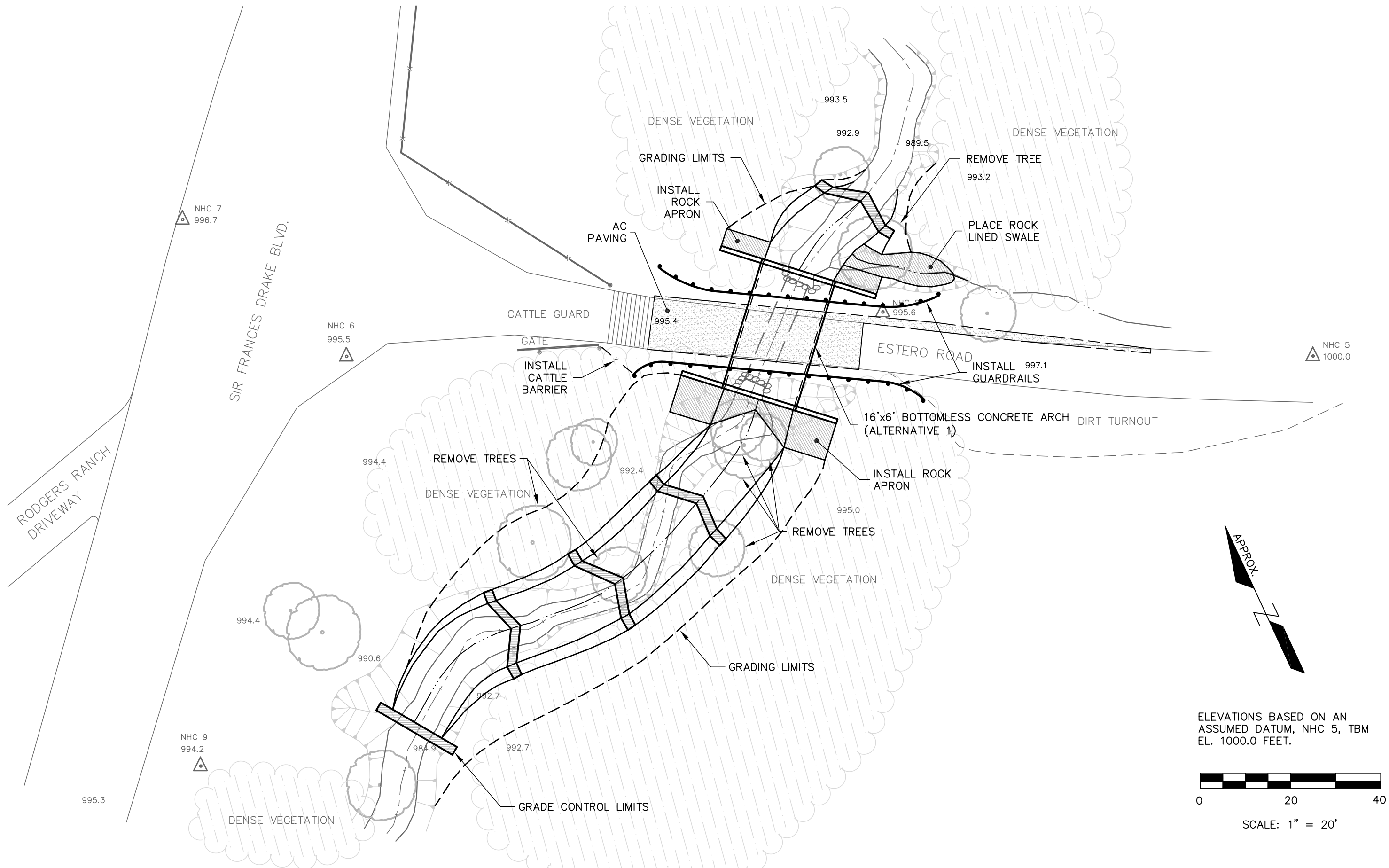
SECTION A-A: ALTERNATIVE 1: 12'X6' CONCRETE BOX CULVERT

SCALES: H 1"=10' V 1"=10'

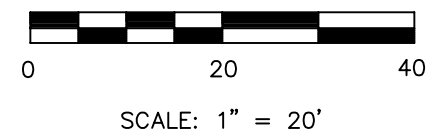


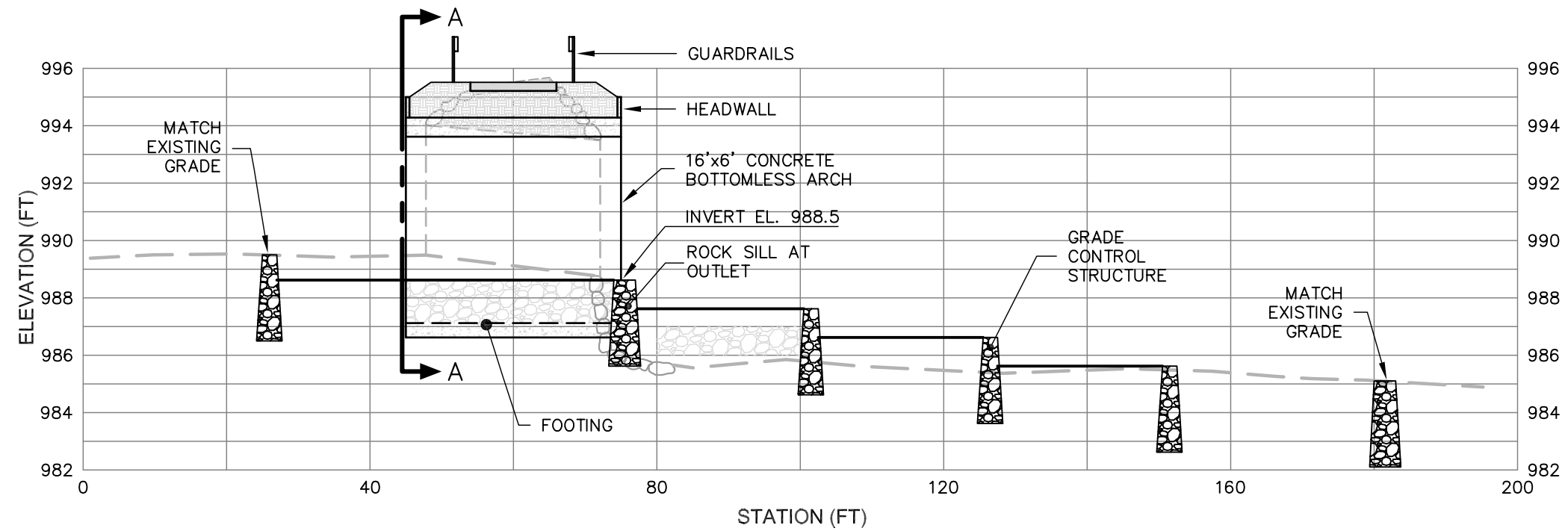
SECTION A-A: ALTERNATIVE 2: 16'X8' CONCRETE ARCH CULVERT

SCALES: H 1"=10' V 1"=10'



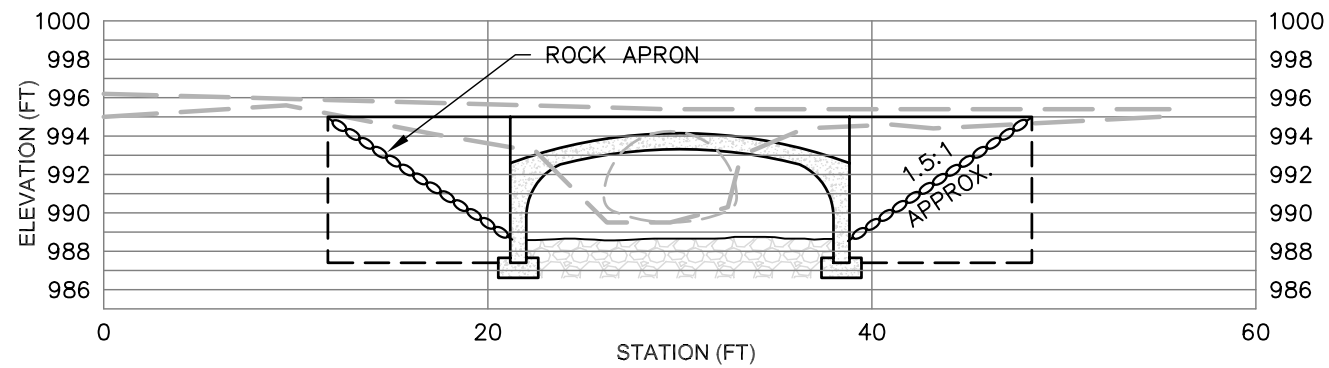
ELEVATIONS BASED ON AN ASSUMED DATUM, NHC 5, TBM EL. 1000.0 FEET.





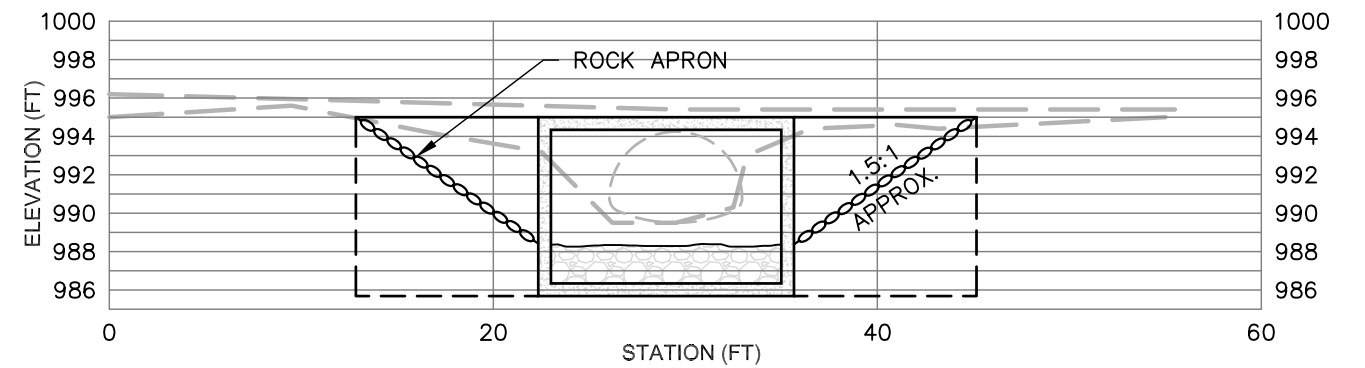
PROPOSED CHANNEL PROFILE

SCALES: H: 1"=20' V: 1"=5'



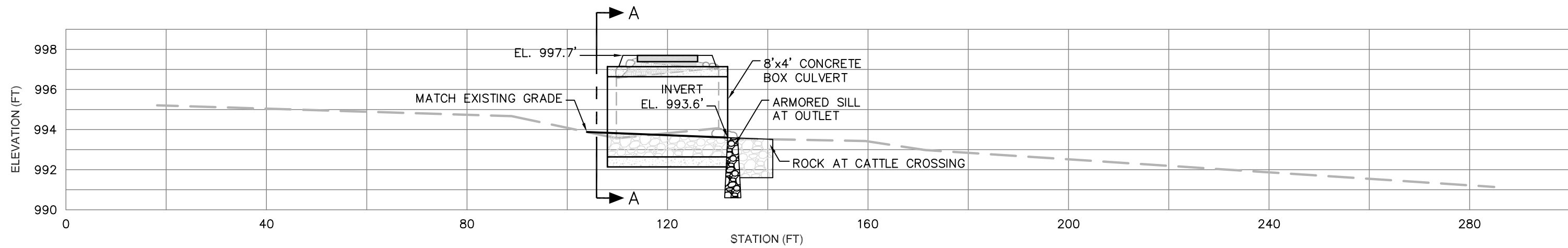
SECTION A-A: ALTERNATIVE 1: 16'x6' CONCRETE ARCH CULVERT

SCALES: H: 1"=10' V: 1"=10'



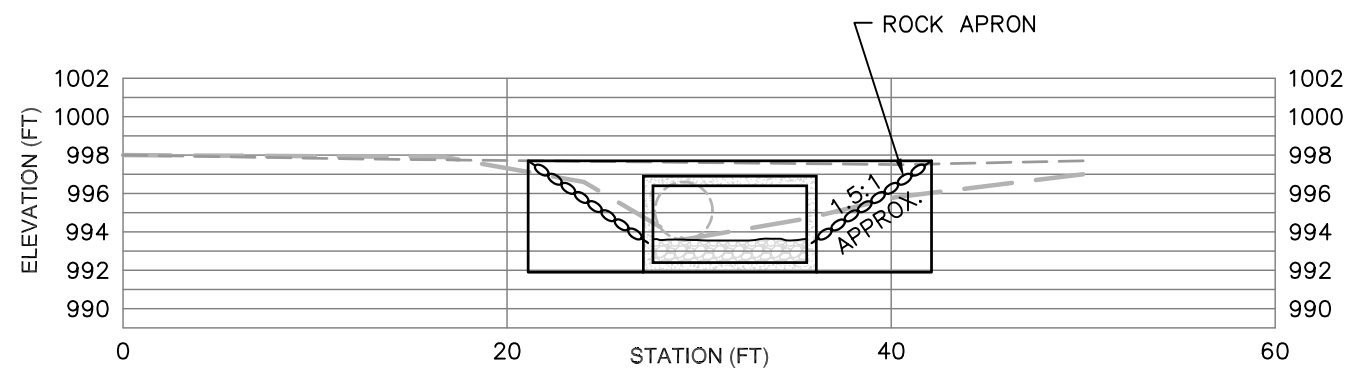
SECTION A-A: ALTERNATIVE 2: 12'x8' CONCRETE BOX CULVERT

SCALES: H: 1"=10' V: 1"=10'



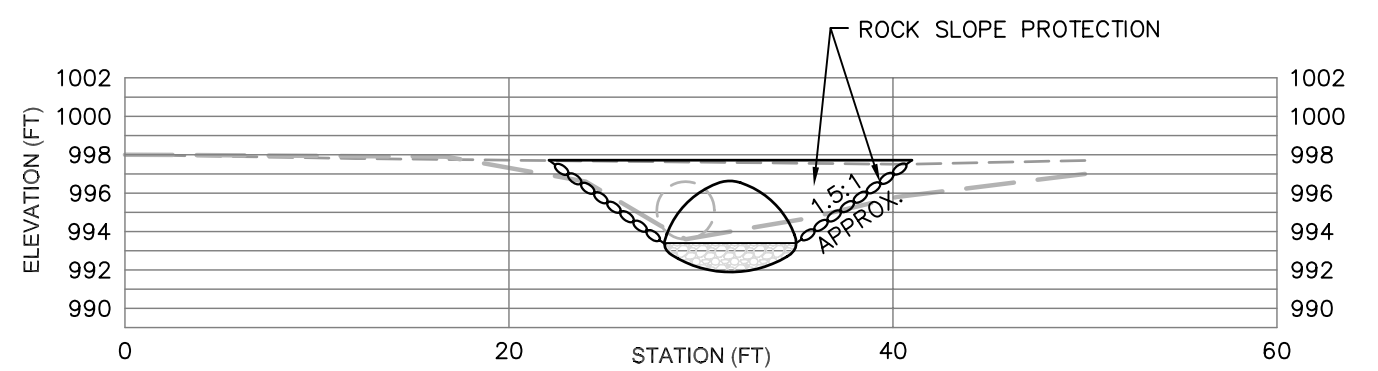
PROPOSED CHANNEL PROFILE

SCALES: H: 1"=20' V: 1"=5'



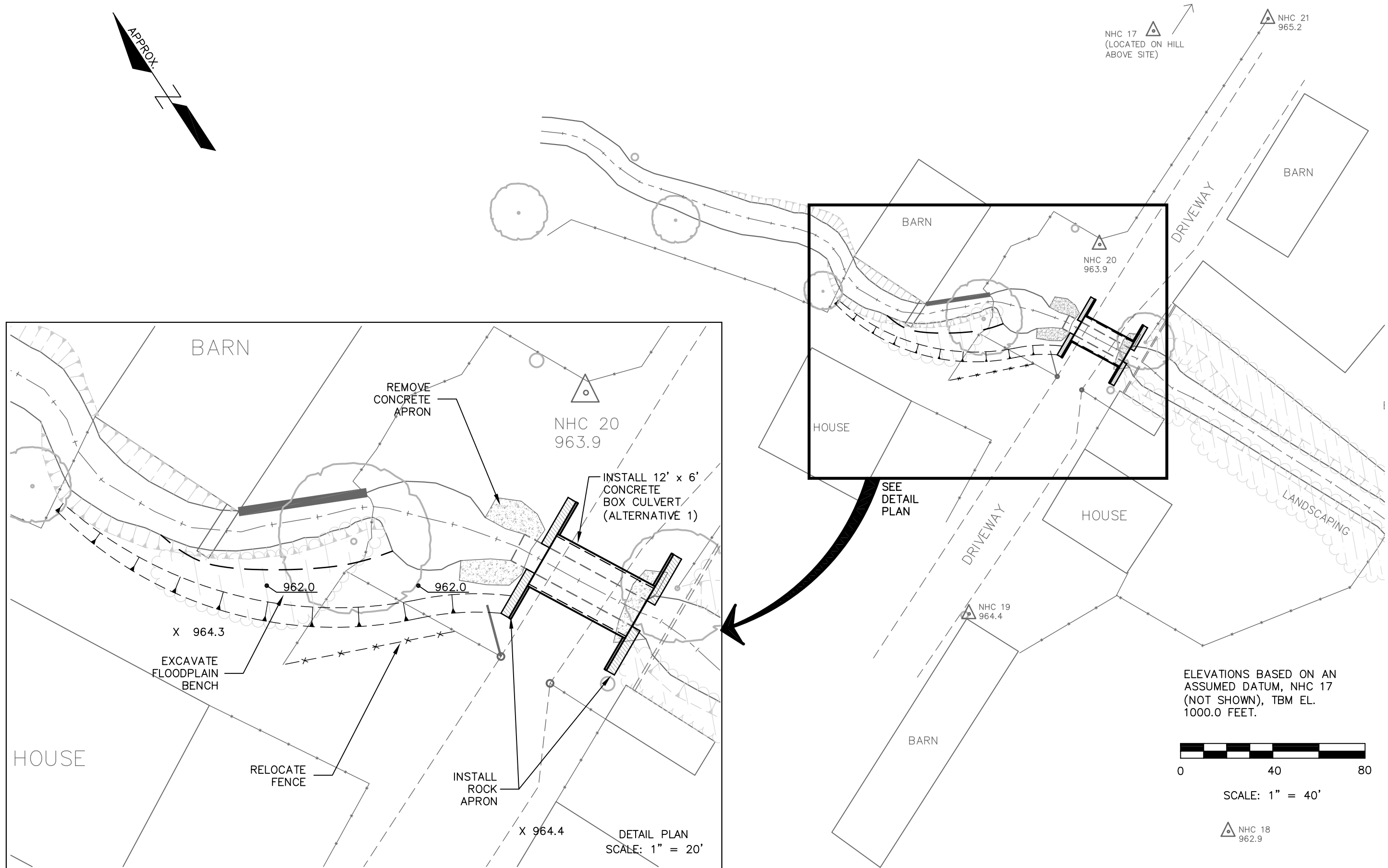
SECTION A-A: ALTERNATIVE 1: 8'x4' CONCRETE BOX CULVERT

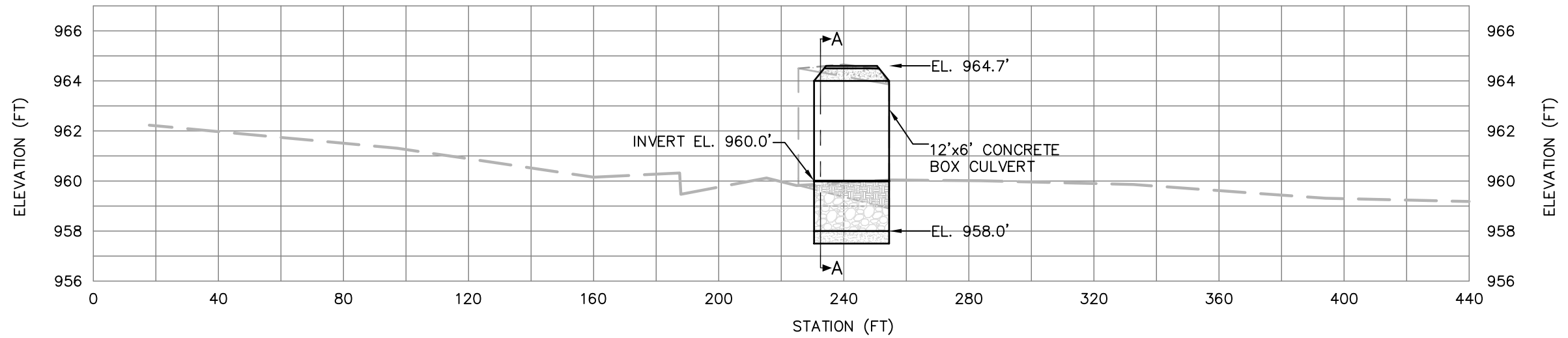
SCALES: H: 1"=10' V: 1"=10'



SECTION A-A: ALTERNATIVE 2: CMP ARCH

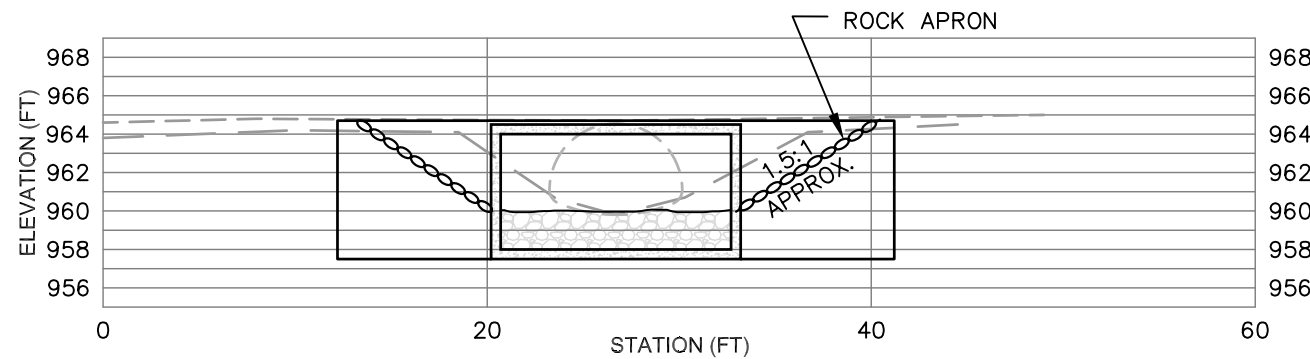
SCALES: H: 1"=10' V: 1"=10'





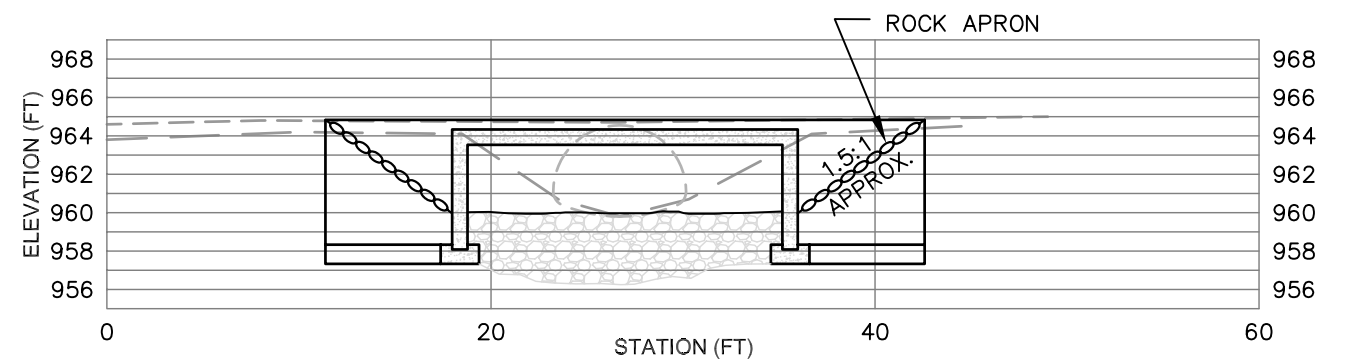
PROPOSED CHANNEL PROFILE

SCALES: H: 1"=40' V: 1"=5'



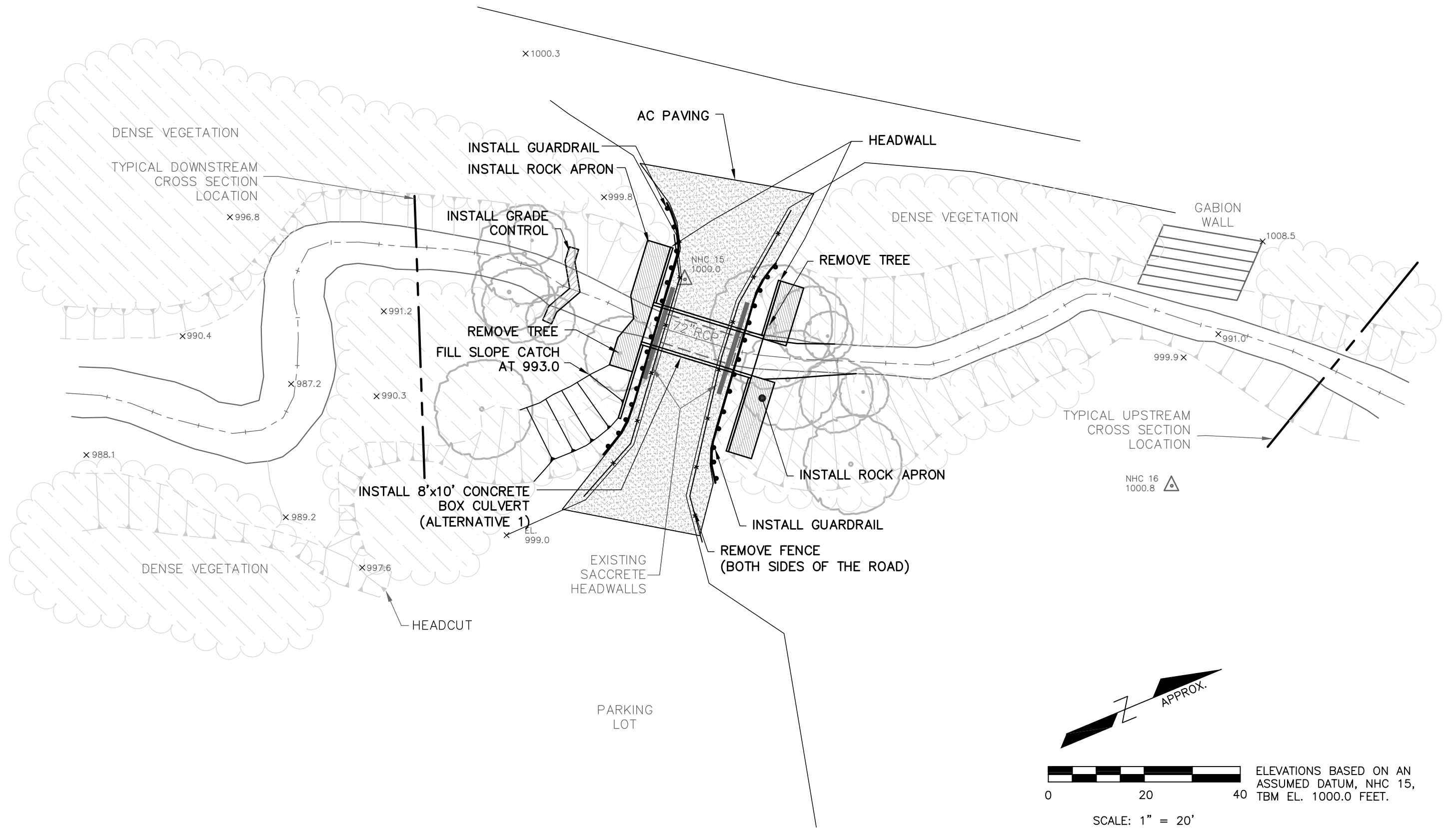
SECTION A-A: ALTERNATIVE 1: 12'x6' CONCRETE BOX CLVERT

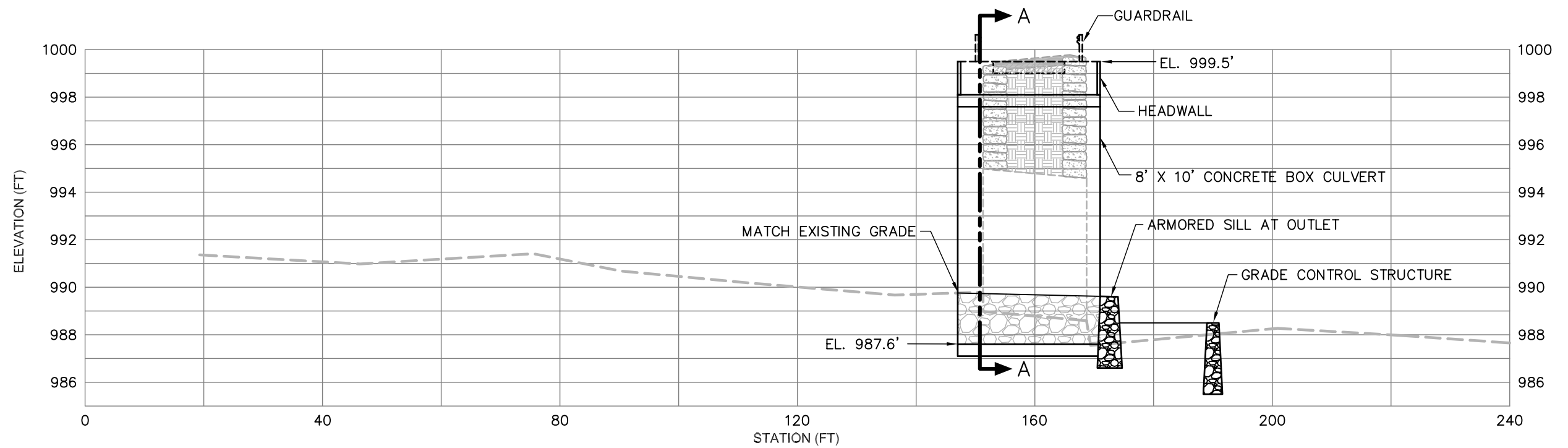
SCALES: H: 1"=10' V: 1"=10'



SECTION A-A: ALTERNATIVE 2: 16'x6' BOTTOMLESS CONCRETE CULVERT

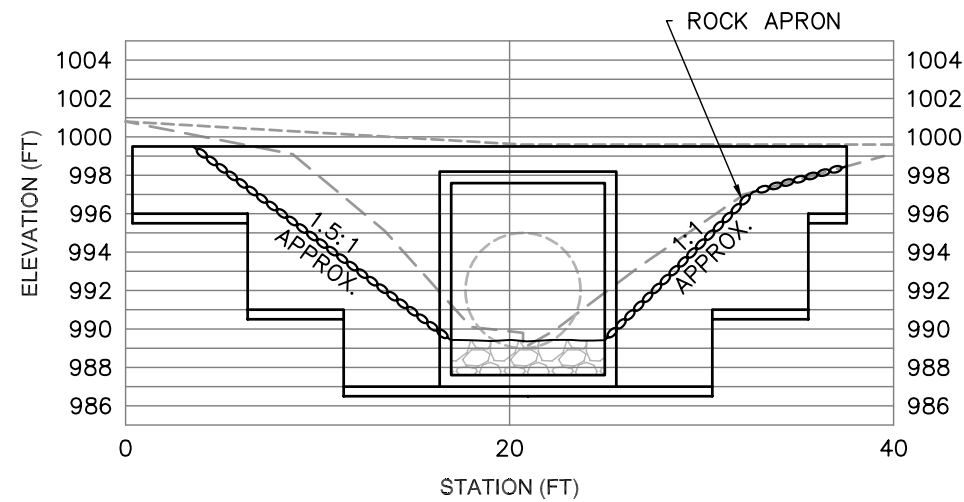
SCALES: H: 1"=10' V: 1"=10'





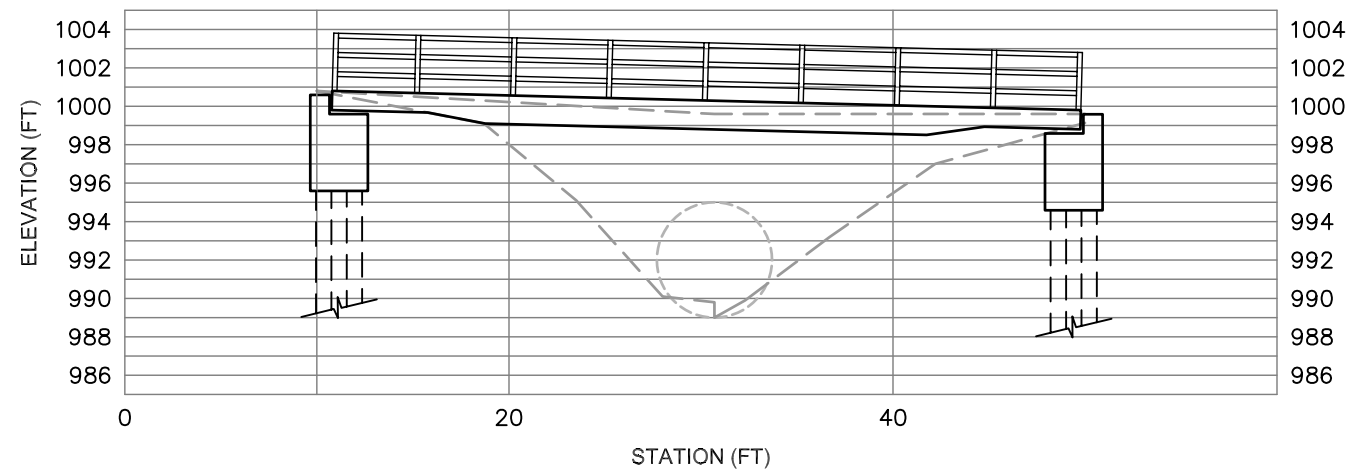
PROPOSED CHANNEL PROFILE

SCALES: H: 1"=20' V: 1"=5'



SECTION A-A: ALTERNATIVE 1: 10'x8' CONCRETE BOX CULVERT

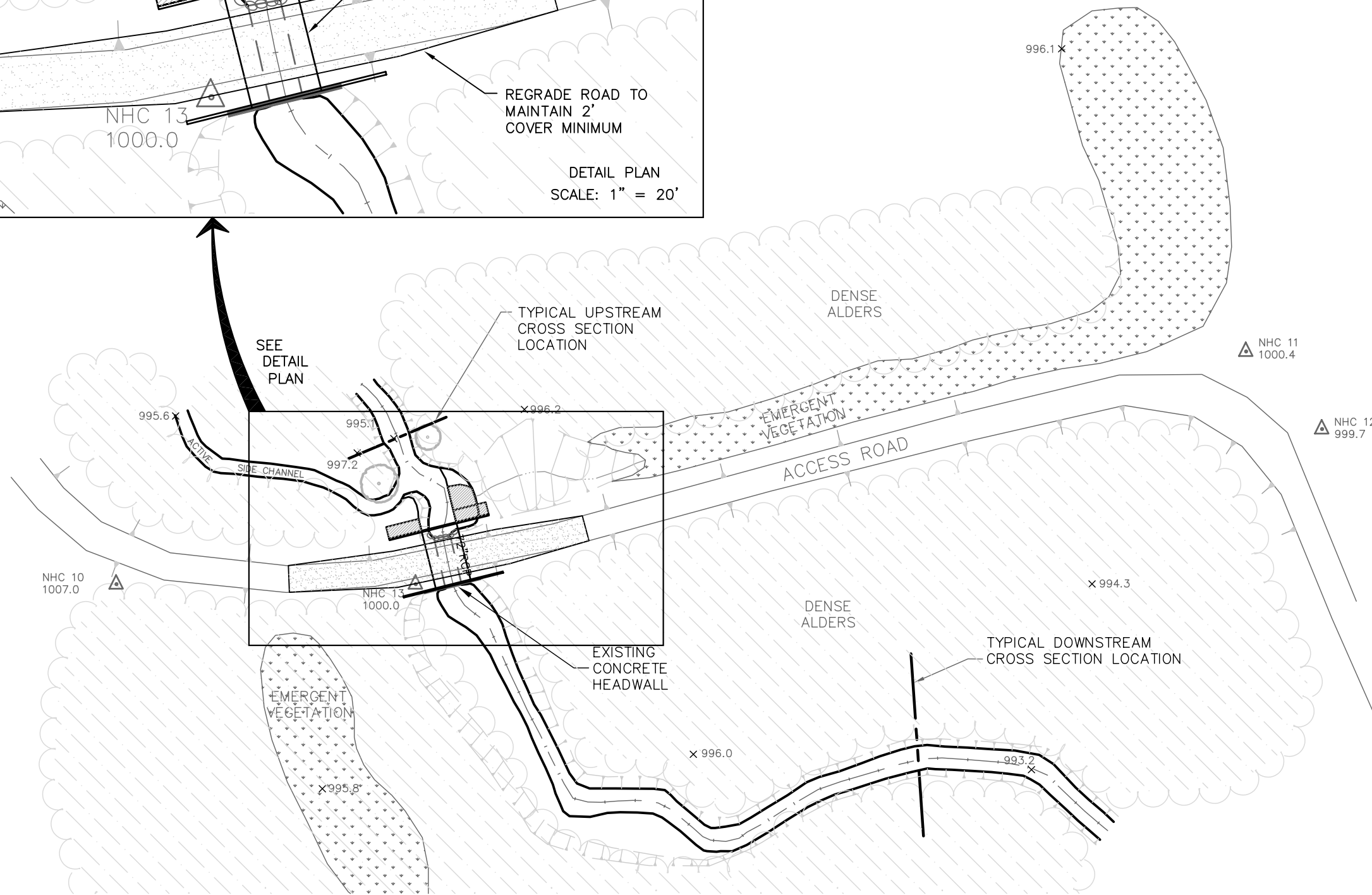
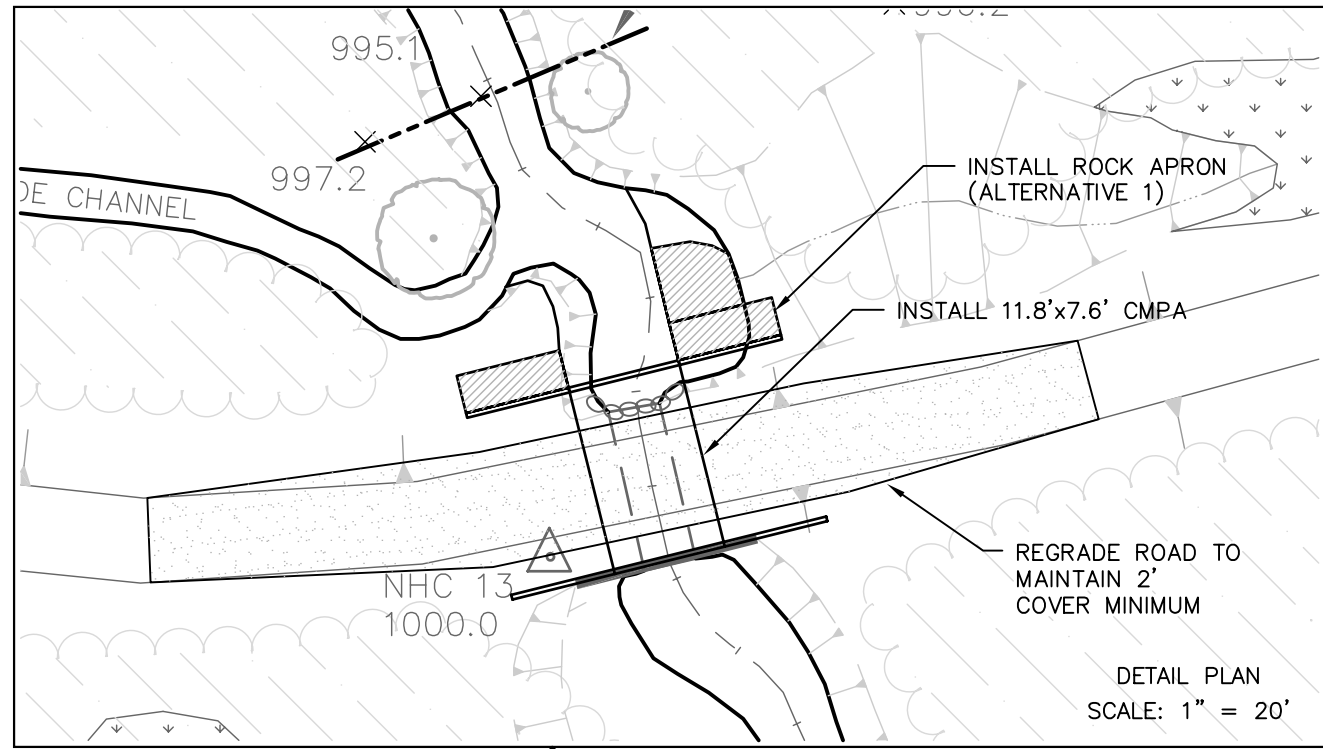
SCALES: H: 1"=10' V: 1"=10'

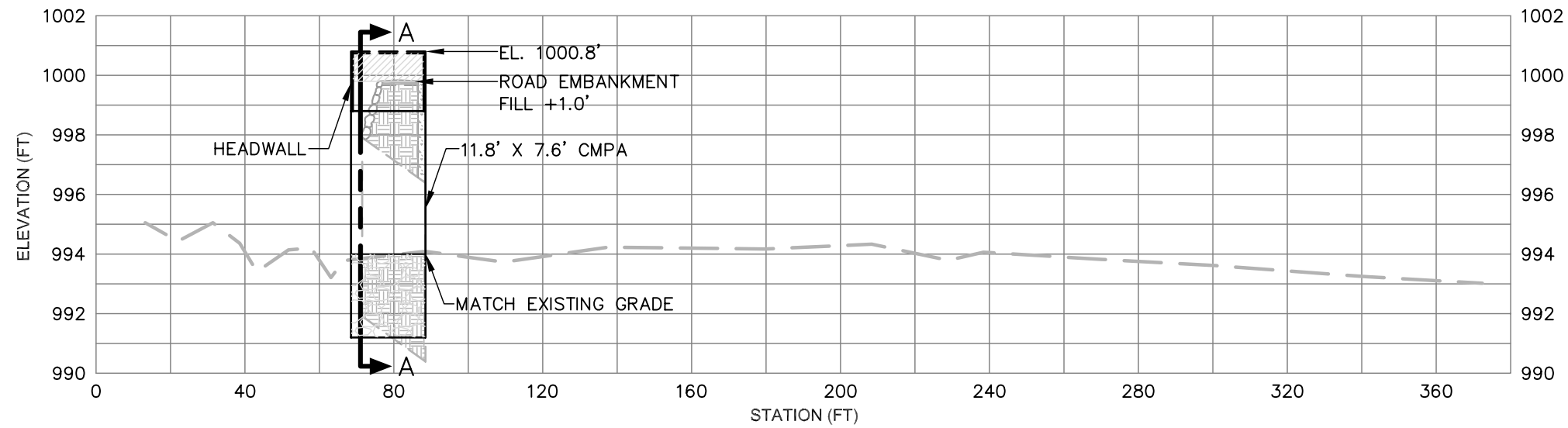


SECTION A-A: ALTERNATIVE 2: STEEL BRIDGE

SCALES: H: 1"=10' V: 1"=10'

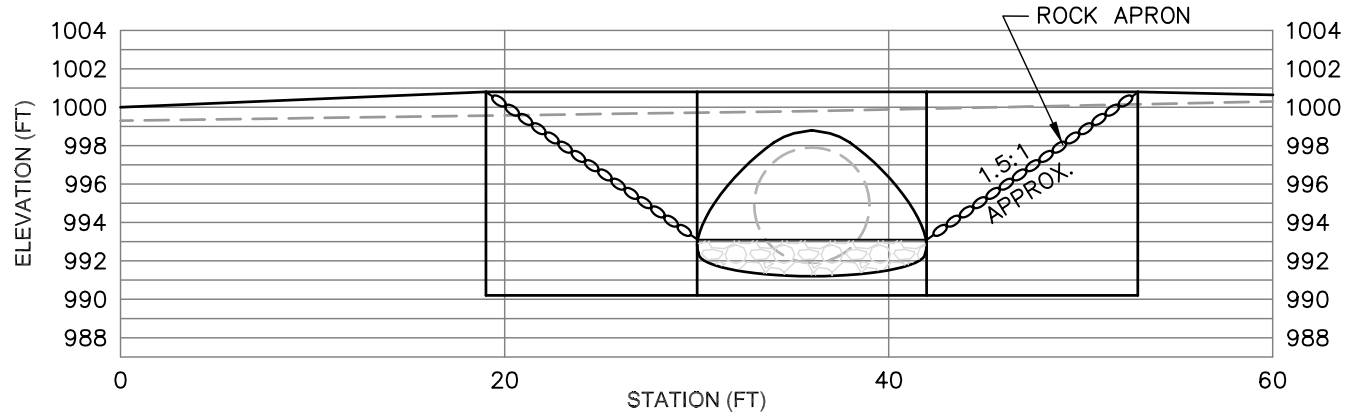
NOTE: ALTERNATIVE 3: MINIMUM TREATMENT
NOT SHOWN





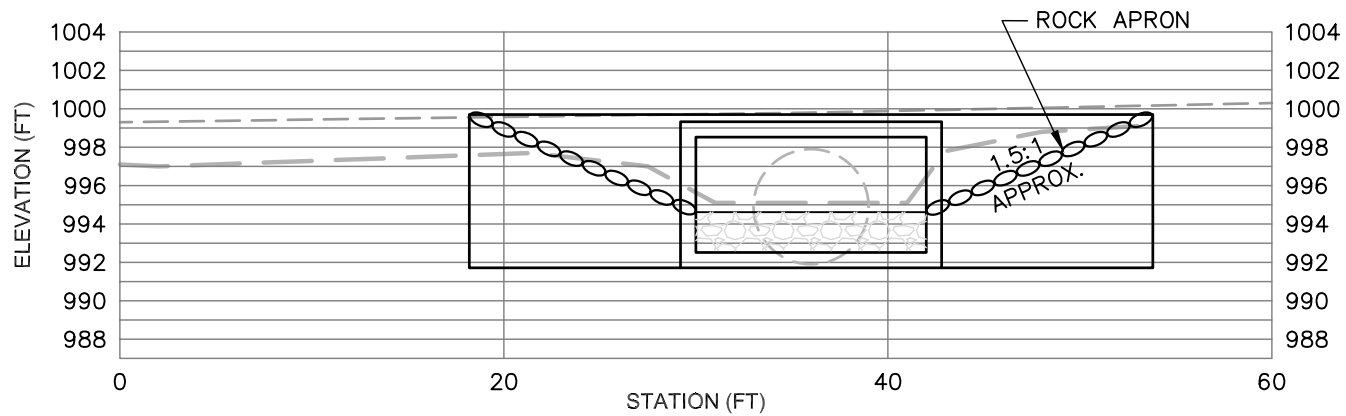
PROPOSED CHANNEL PROFILE

SCALES: H: 1"=40' V: 1"=5'



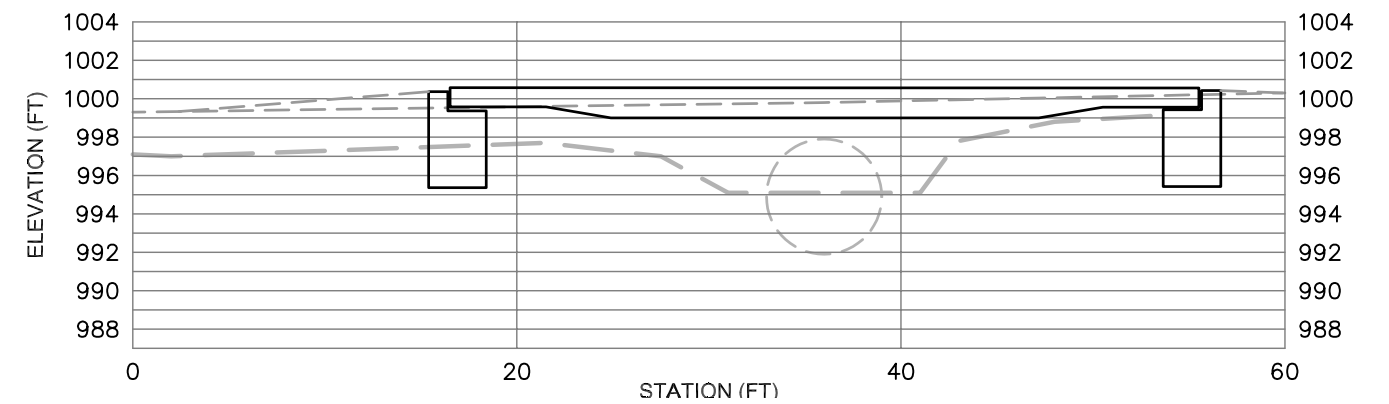
SECTION A-A: ALTERNATIVE 1: 11.8'x7.6' CMPA

SCALES: H: 1"=10' V: 1"=10'



SECTION A-A: ALTERNATIVE 2: CONCRETE BOX CULVERT

SCALES: H: 1"=10' V: 1"=10'



SECTION A-A: ALTERNATIVE 3: STEEL BRIDGE

SCALES: H: 1"=10' V: 1"=10'

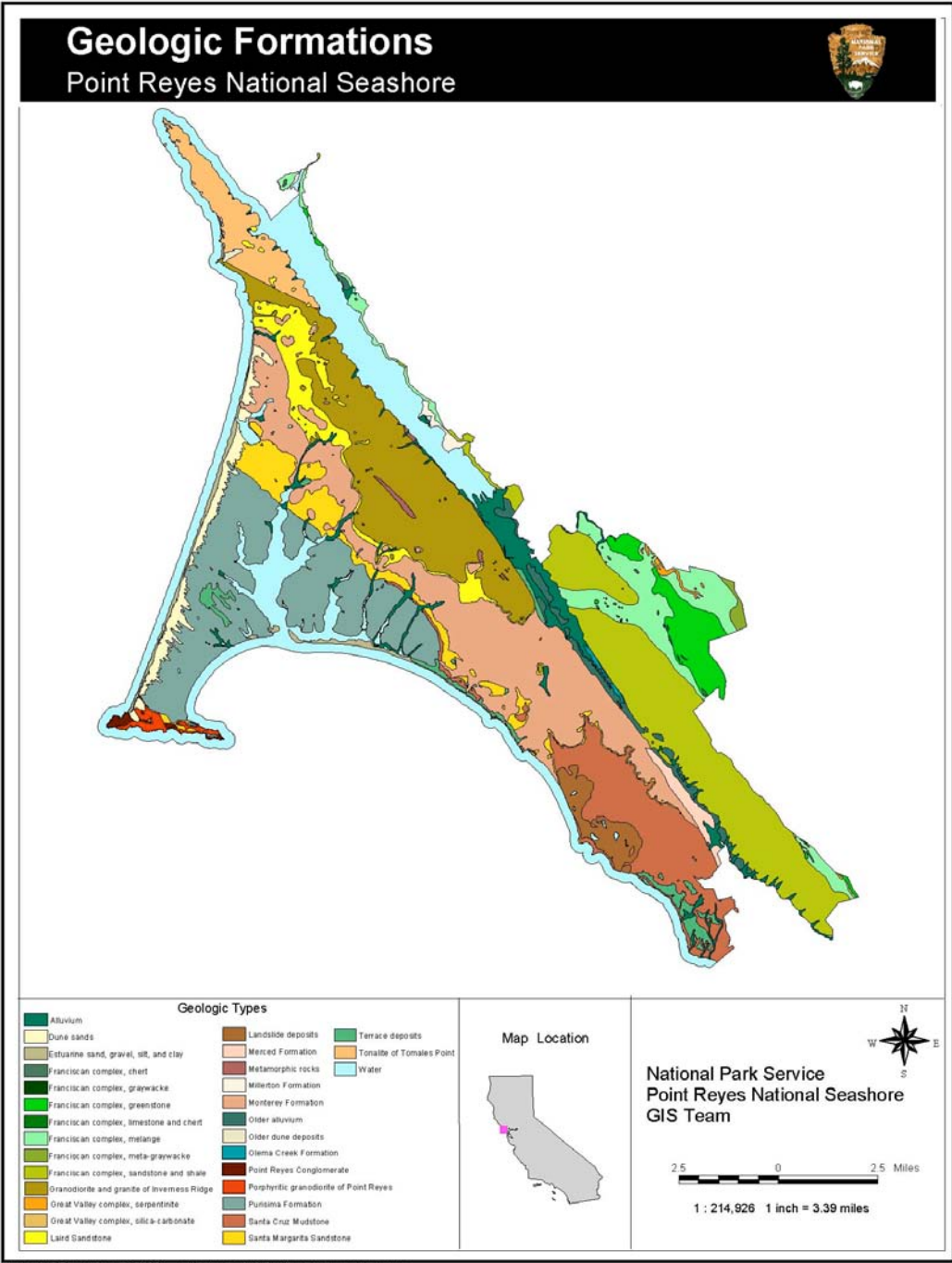


Figure 3-1 Geology of Point Reyes National Seashore