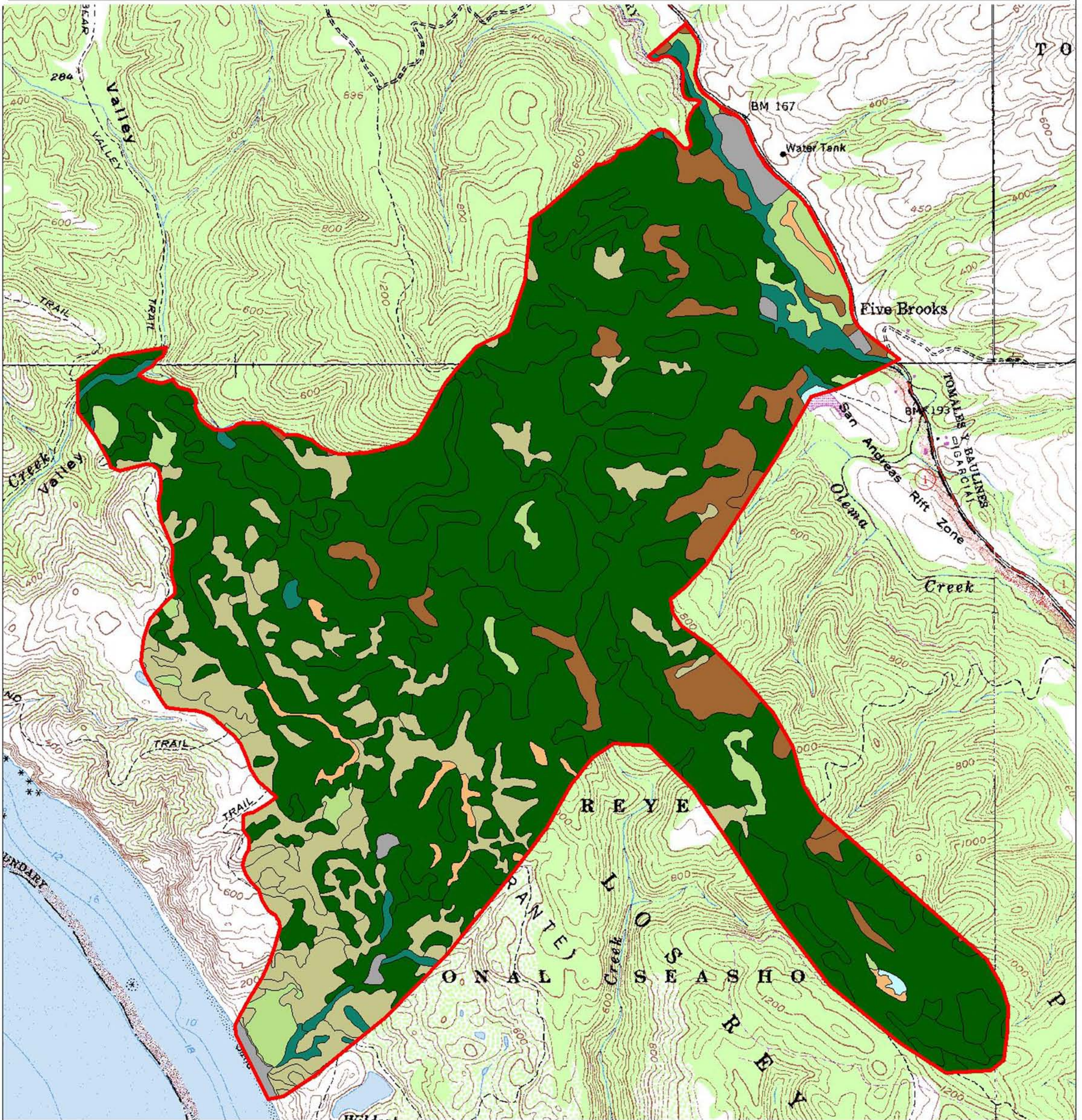


# Vegetation in Wilderness South FMU

## Point Reyes National Seashore



<b>Vegetation Classes and Acreage</b> <ul style="list-style-type: none"> <li><span style="display: inline-block; width: 15px; height: 15px; background-color: darkgreen; border: 1px solid black;"></span> Douglas-fir / Redwood = 1673.3</li> <li><span style="display: inline-block; width: 15px; height: 15px; background-color: lightgreen; border: 1px solid black;"></span> Grassland = 85.5</li> <li><span style="display: inline-block; width: 15px; height: 15px; background-color: brown; border: 1px solid black;"></span> Hardwood Forest = 128.0</li> <li><span style="display: inline-block; width: 15px; height: 15px; background-color: orange; border: 1px solid black;"></span> Marsh = 22.4</li> <li><span style="display: inline-block; width: 15px; height: 15px; background-color: teal; border: 1px solid black;"></span> Riparian = 54.0</li> <li><span style="display: inline-block; width: 15px; height: 15px; background-color: yellowgreen; border: 1px solid black;"></span> Scrub = 303.6</li> <li><span style="display: inline-block; width: 15px; height: 15px; background-color: grey; border: 1px solid black;"></span> Unvegetated = 28.2</li> <li><span style="display: inline-block; width: 15px; height: 15px; background-color: lightblue; border: 1px solid black;"></span> Water = 3.0</li> <li><span style="display: inline-block; width: 15px; height: 15px; border: 2px solid red;"></span> FMU Boundary</li> </ul>		<b>Map Location</b> 	<b>National Park Service</b> <b>Point Reyes National Seashore</b> <b>GIS Team</b>   1 : 31,879 1 inch = 0.50 miles
--	--	-------------------------	---