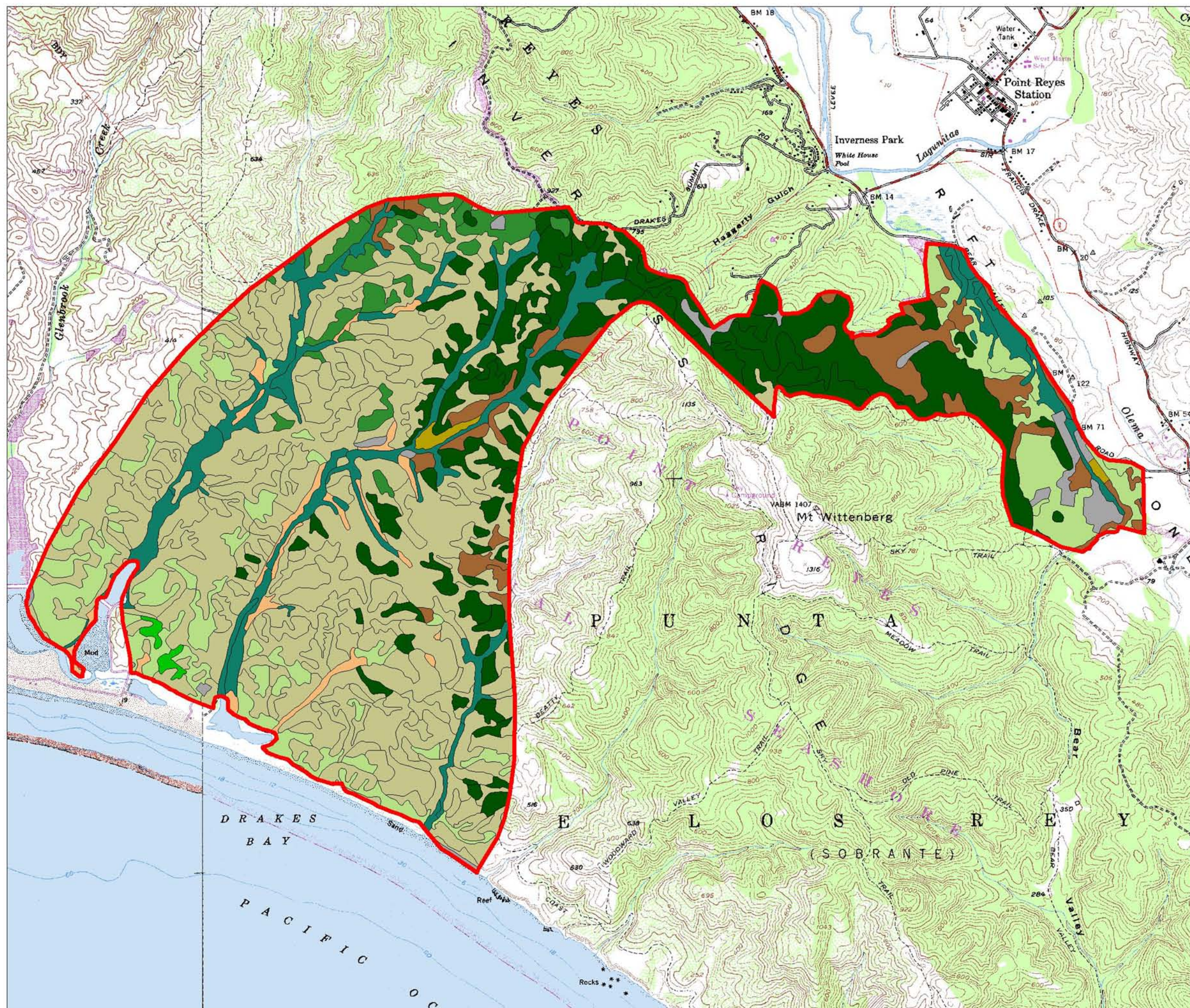


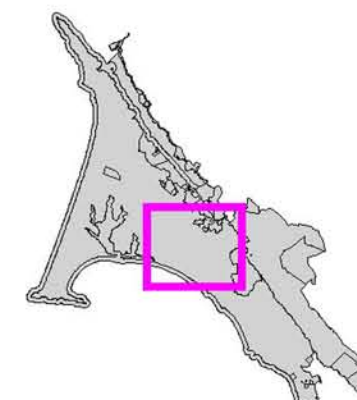
Vegetation in the Limantour Road FMU

Point Reyes National Seashore



| | FMU Boundary |
|--------------------------------|-------------------------------|
| Vegetation Classes and Acreage | |
| | Bishop Pine = 140.9 |
| | Douglas-fir / Redwood = 748.4 |
| | Dune = 0.2 |
| | Grassland = 462.2 |
| | Hardwood Forest = 216.9 |
| | Marsh = 69.7 |
| | Monterey Pine/Cypress = 12.1 |
| | Pasture = 13.6 |
| | Riparian = 371.5 |
| | Scrub = 2040.3 |
| | Unvegetated = 65.1 |
| | Water = 2.8 |

Map Location



National Park Service
Point Reyes National Seashore
GIS Team

