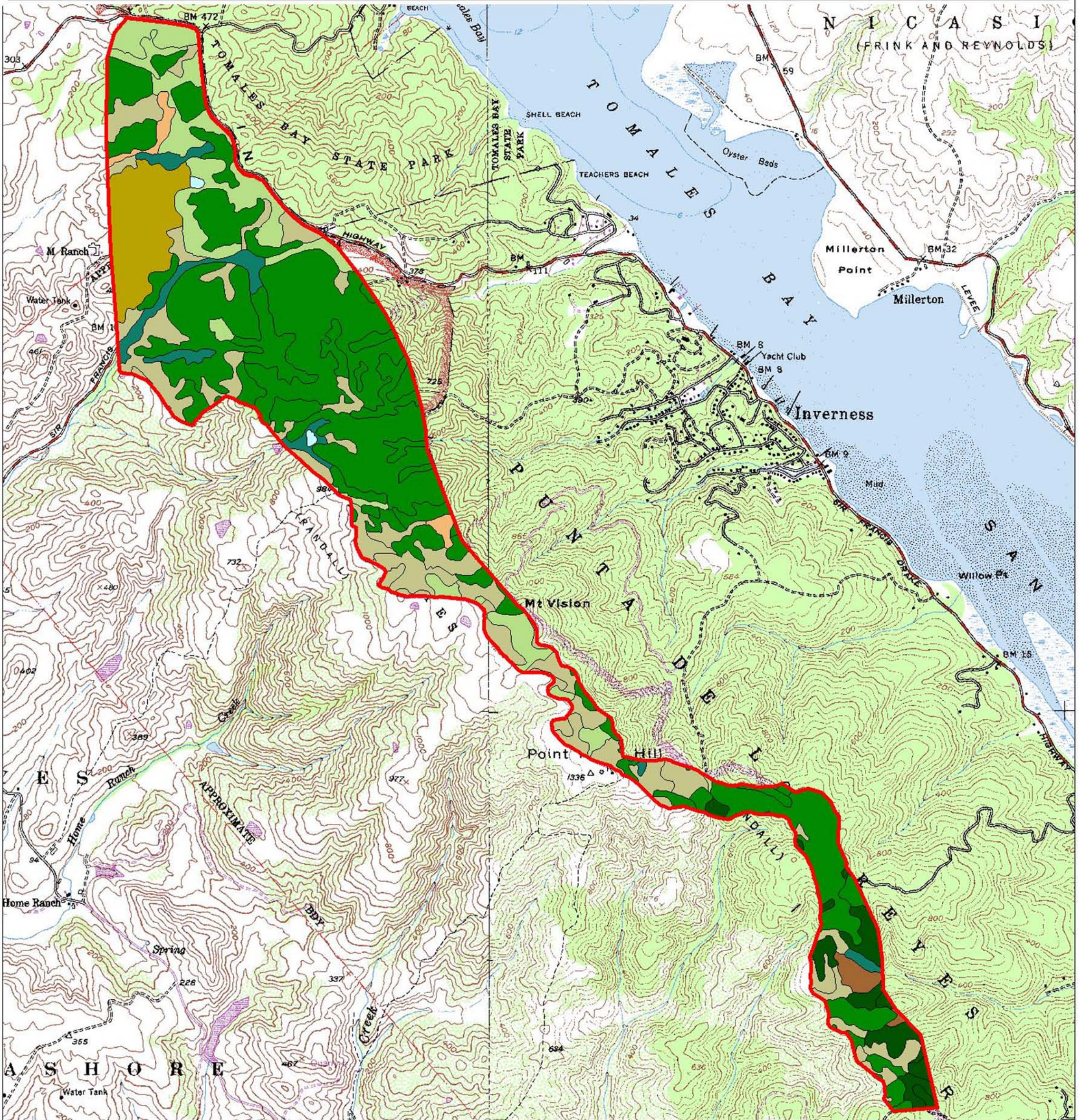


Vegetation in Inverness Ridge FMU

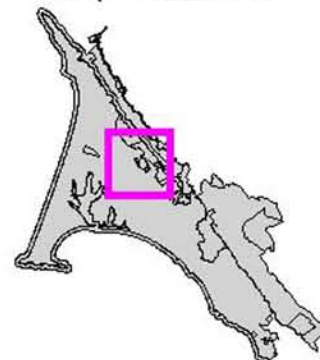
Point Reyes National Seashore



Vegetation Classes and Acreage

Bishop Pine = 646.3	Riparian = 46.2
Douglas-fir / Redwood = 55.7	Scrub = 245.6
Grassland = 143.8	Unvegetated = 0.0007
Hardwood Forest = 12.5	Water = 2.6
Marsh = 13.4	FMU Boundary
Pasture = 84.4	

Map Location



National Park Service
Point Reyes National Seashore
GIS Team



0.2 0 0.2 0.4 0.6 0.8 Miles



1 : 37,161 1 inch = 0.59 miles