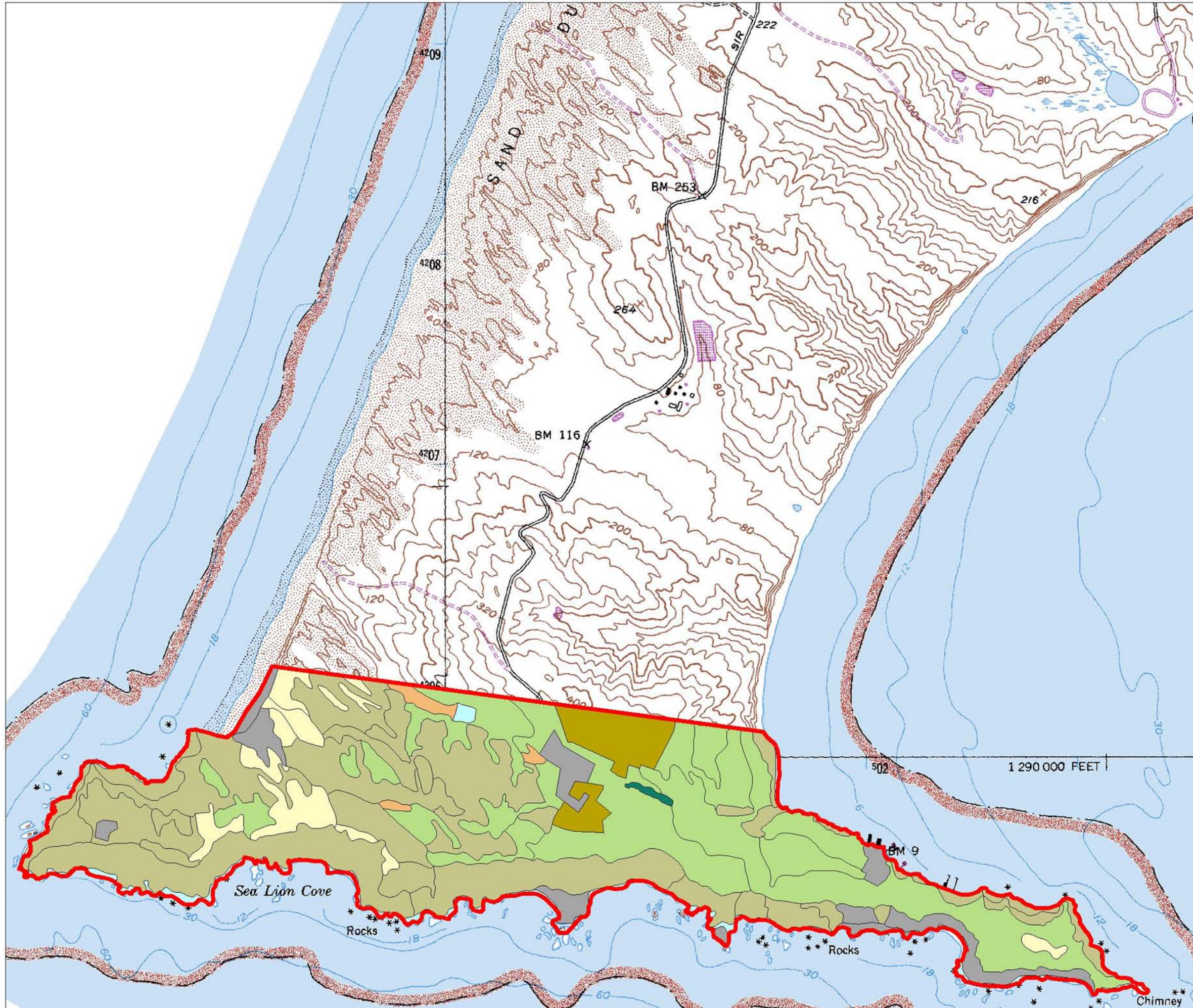


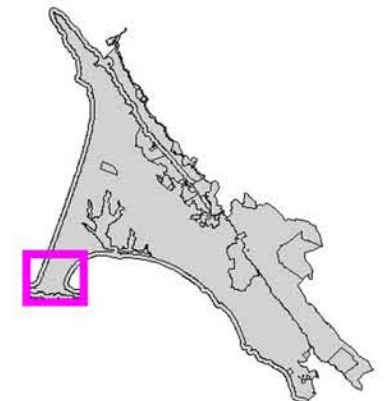
# Vegetation in the Headlands FMU

## Point Reyes National Seashore



Vegetation Types and Acreage	
	FMU Boundary
	Dune = 51.3
	Grassland = 299.4
	Marsh = 7.7
	Pasture = 38.1
	Riparian = 1.8
	Scrub = 400.7
	Unvegetated = 56.8
	Water = 24.5

### Map Location



National Park Service  
Point Reyes National Seashore  
GIS Team

0.1 0 0.1 0.2 0.3 0.4 0.5 Miles



1 : 28,981 1 inch = 0.46 miles

