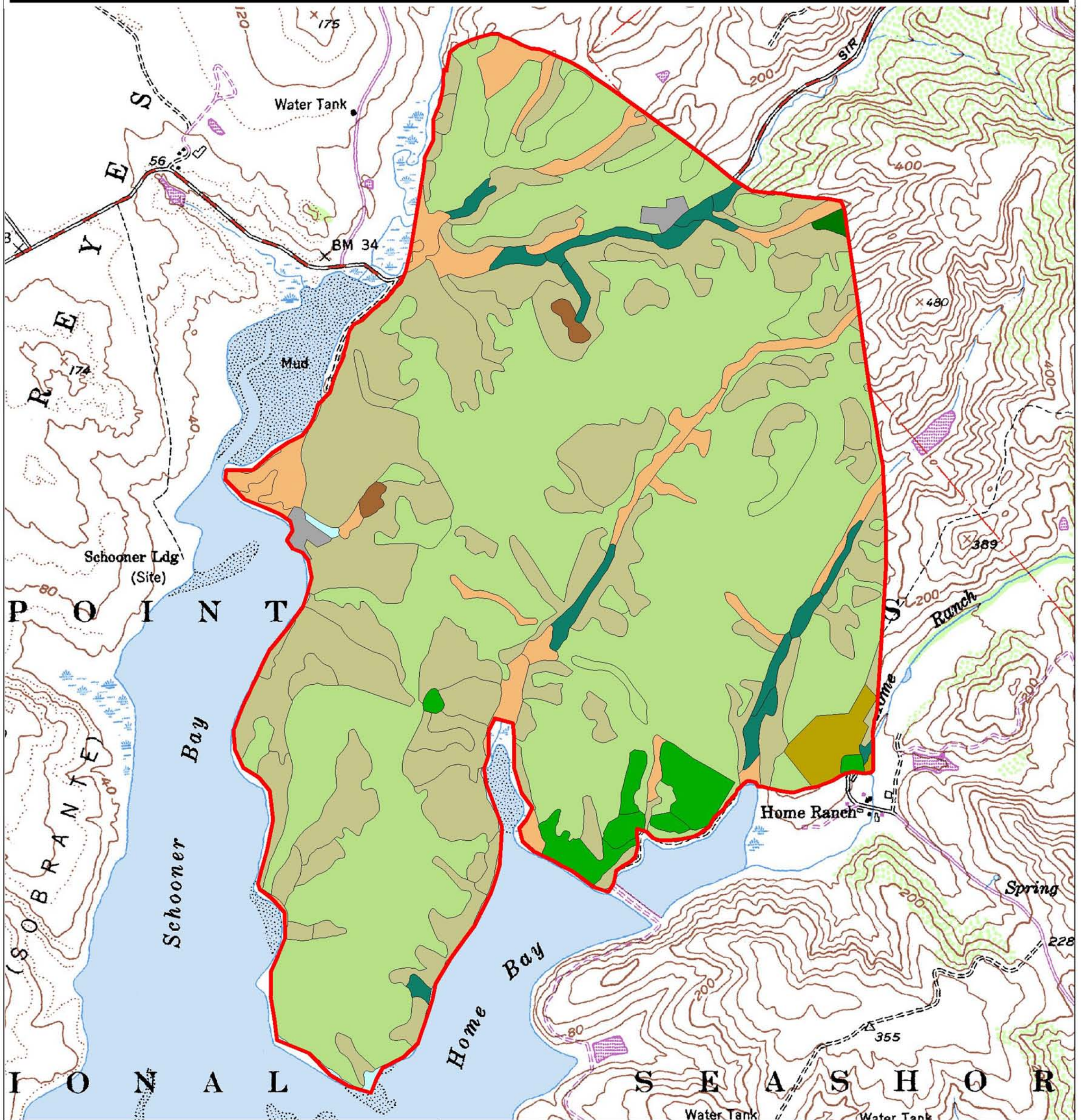


Vegetation in the Estero FMU

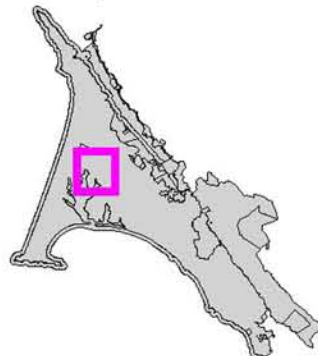
Point Reyes National Seashore



Vegetation Classes and Acreage

	Bishop Pine = 2.2		Riparian = 37.9
	Grassland = 913.1		Scrub = 520.2
	Hardwood Forest = 5.3		Unvegetated = 7.6
	Marsh = 94.2		Water = 4.7
	Monterey Pine/Cypress = 37.0		FMU Boundary
	Pasture = 16.9		

Map Location



National Park Service
Point Reyes National Seashore
GIS Team



0.1 0 0.1 0.2 0.3 0.4 0.5 Miles

1 : 23,207 1 inch = 0.37 miles