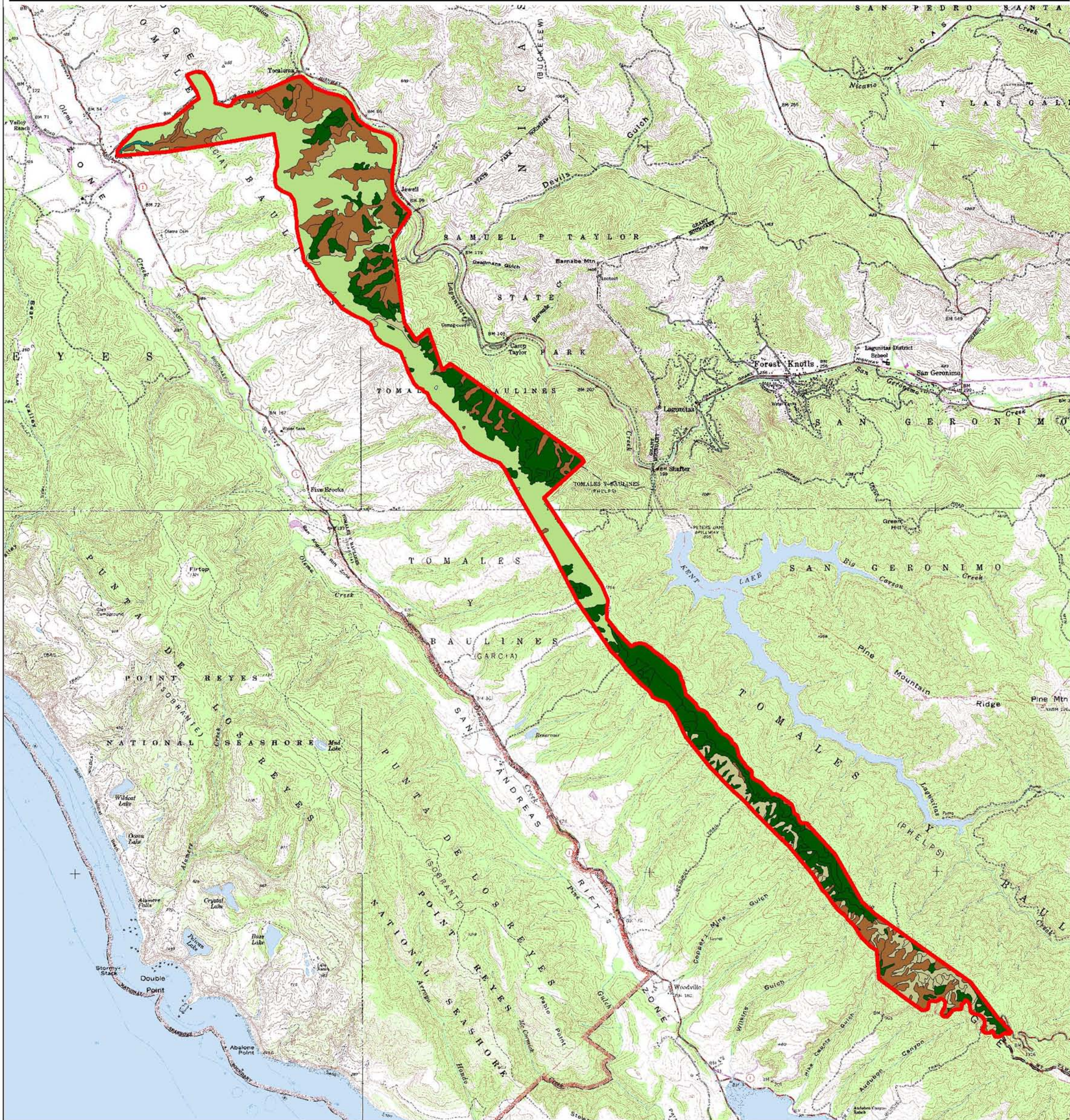


# Vegetation in Bolinas Ridge FMU

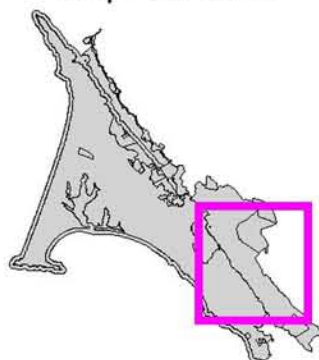
## Point Reyes National Seashore



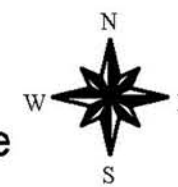
### Vegetation Classes and Acreage

	Douglas-fir / Redwood = 755.4
	Grassland = 846.7
	Hardwood Forest = 570.0
	Riparian = 5.9
	Scrub = 203.4
	Water = 0.3
	Unvegetated = 0.2
	FMU Boundary

### Map Location



National Park Service  
Point Reyes National Seashore  
GIS Team



0.5 0 0.5 1 1.5 2 Miles



1 : 65,251 1 inch = 1.03 miles