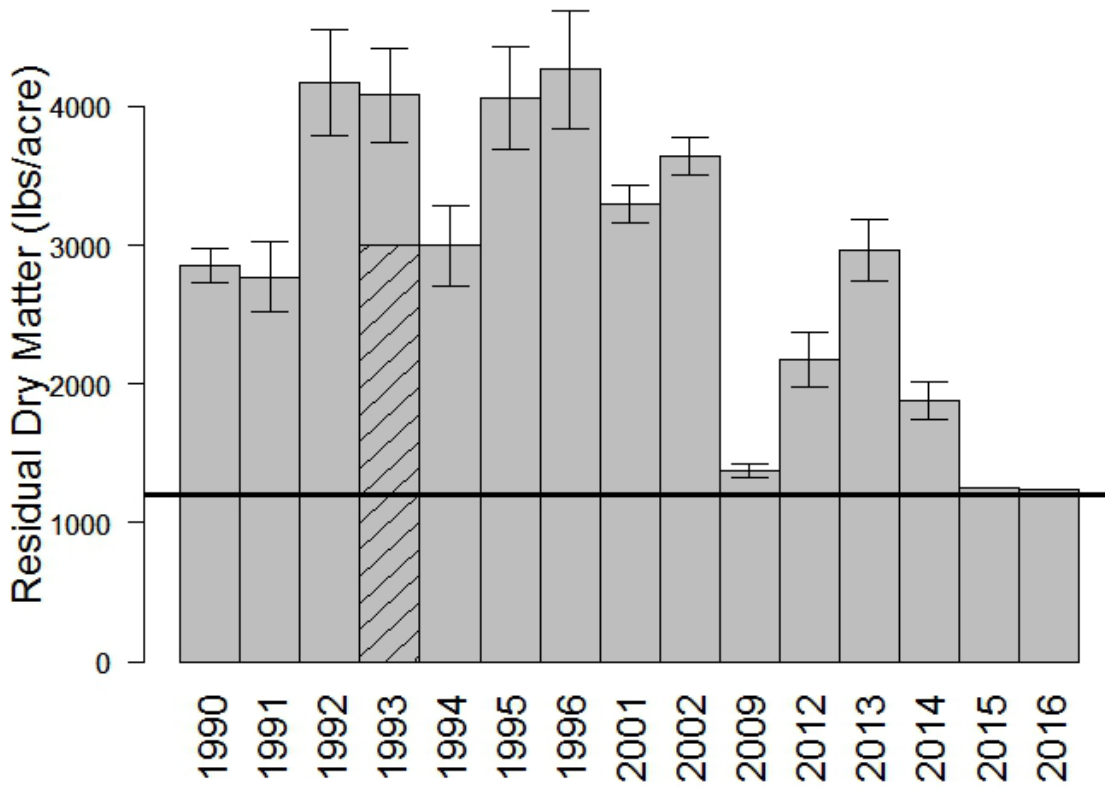


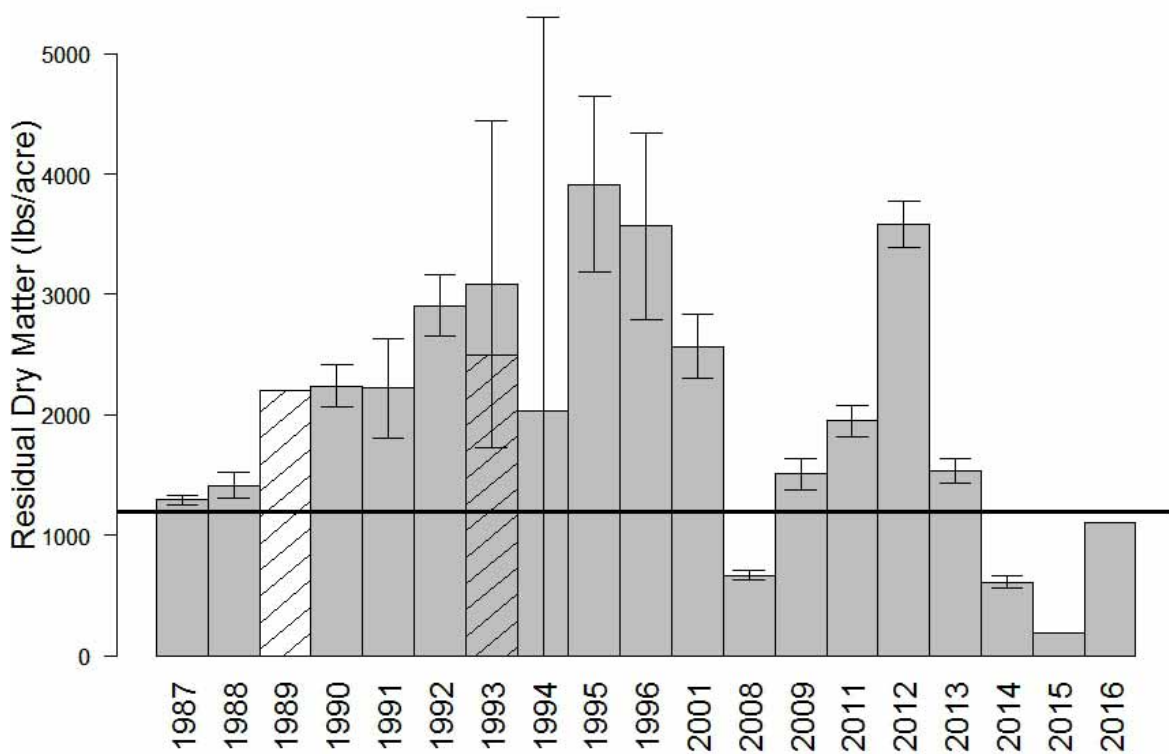
Figure A.2 1987-2016 RDM by key area transect

The figures for the following Residual Dry Matter (RDM) values show annual variation in RDM for all years that are sampled with visual estimation, double-sampling monitoring, or 3 representative clips as described in section 6.2. The solid grey bars with whiskers show the double-sampling RDM estimates and the corresponding 95% confidence interval. Whiskers are not shown for incomplete double-sampling estimates or the 3 representative clips where a confidence interval is not calculated. The bars with only hash marks show visual estimates of RDM. Any bar that shows grey *and* hash marks represents a transect that in one year had some clipped estimates and visual estimation but only double-sampling if there are whiskers to represent the 95% confidence interval. The solid black line marks the 1,200 lbs/acre minimum RDM standard.

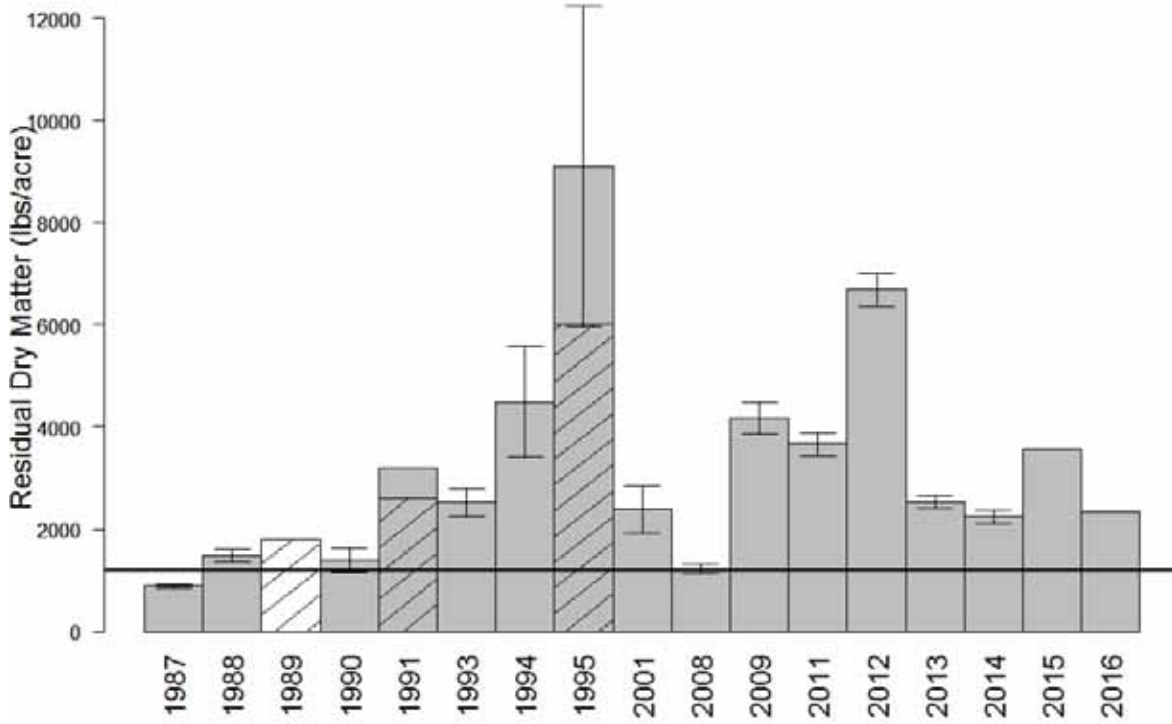
Strain Hill (1)



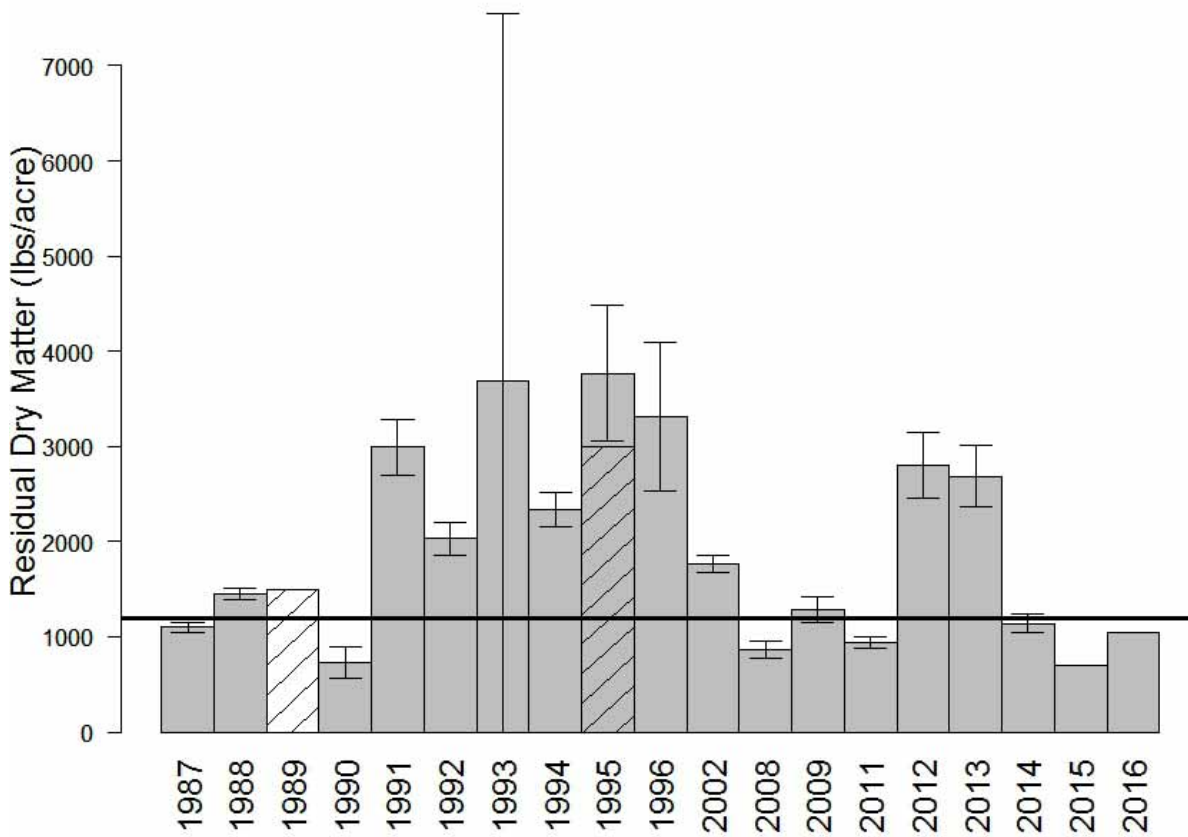
R Giacomini (2)



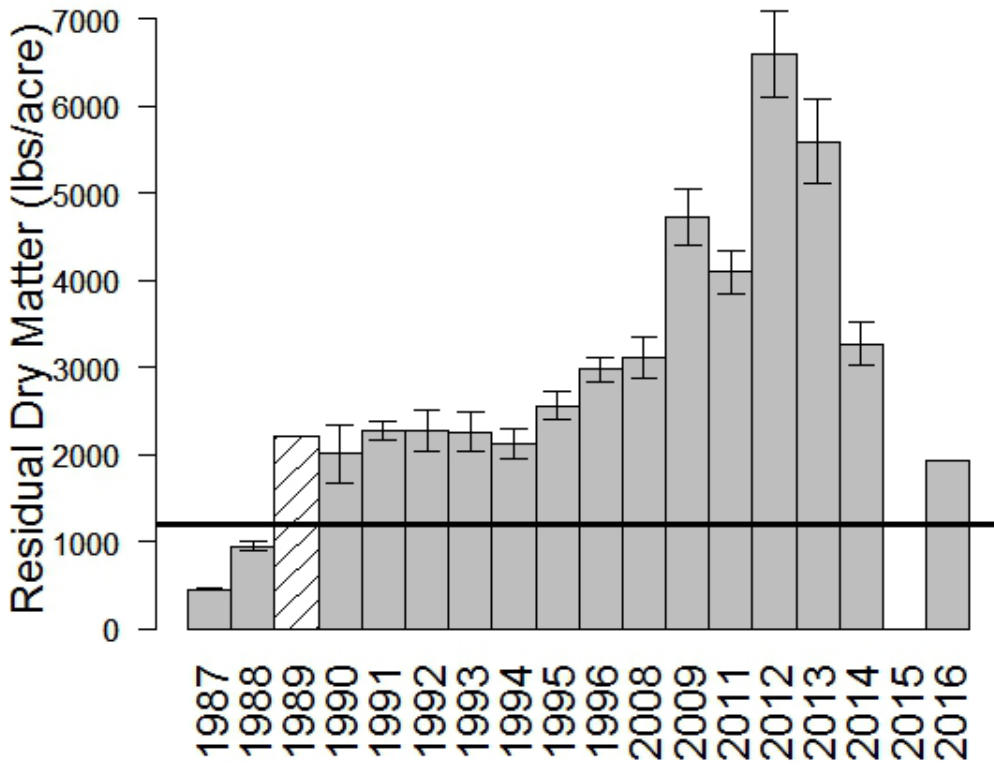
Stewart Truttman (3)



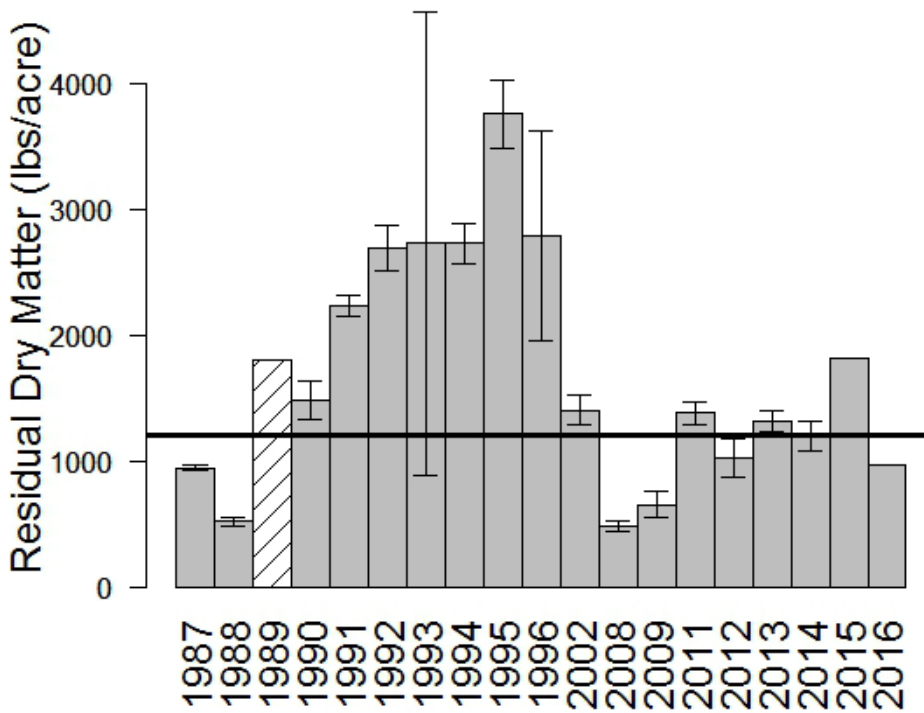
Stewart Lupton (4)



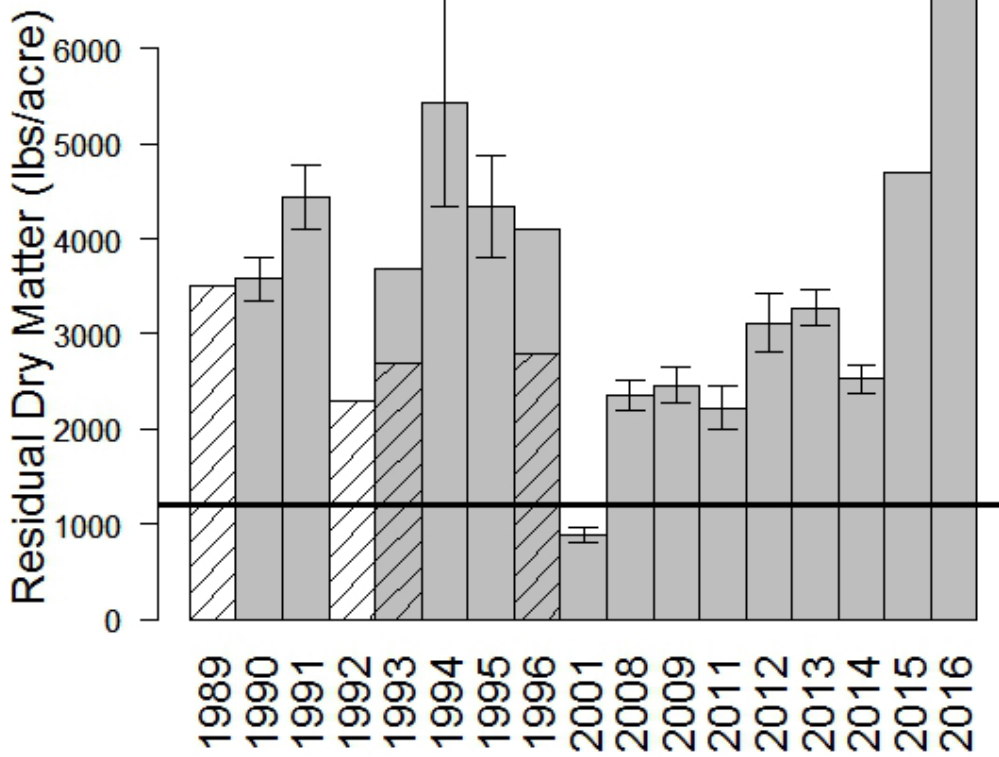
Jewell (5)



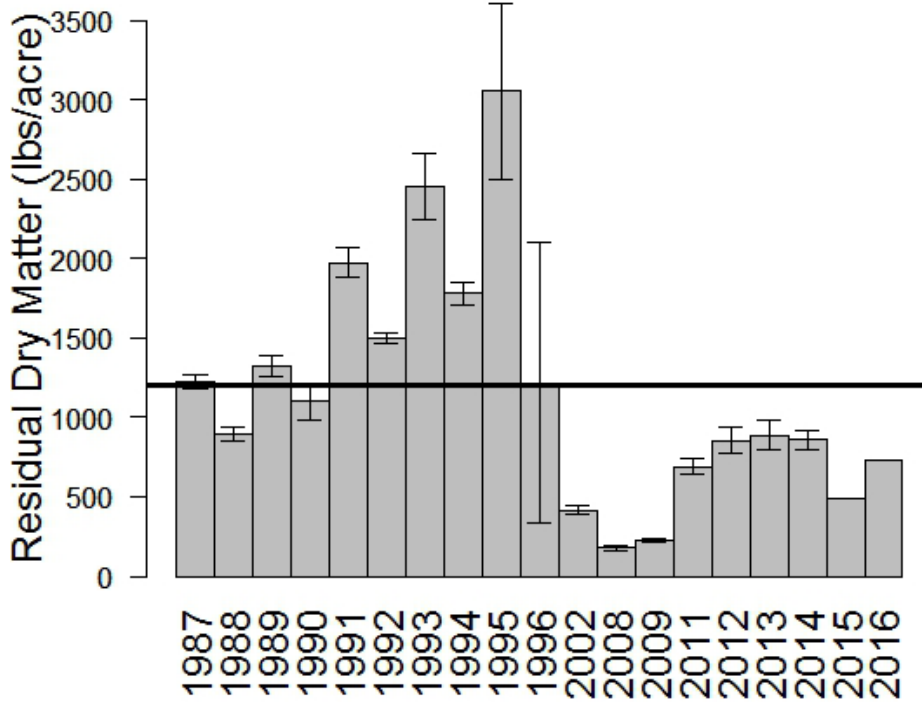
Mclsaac Bolinas (6)



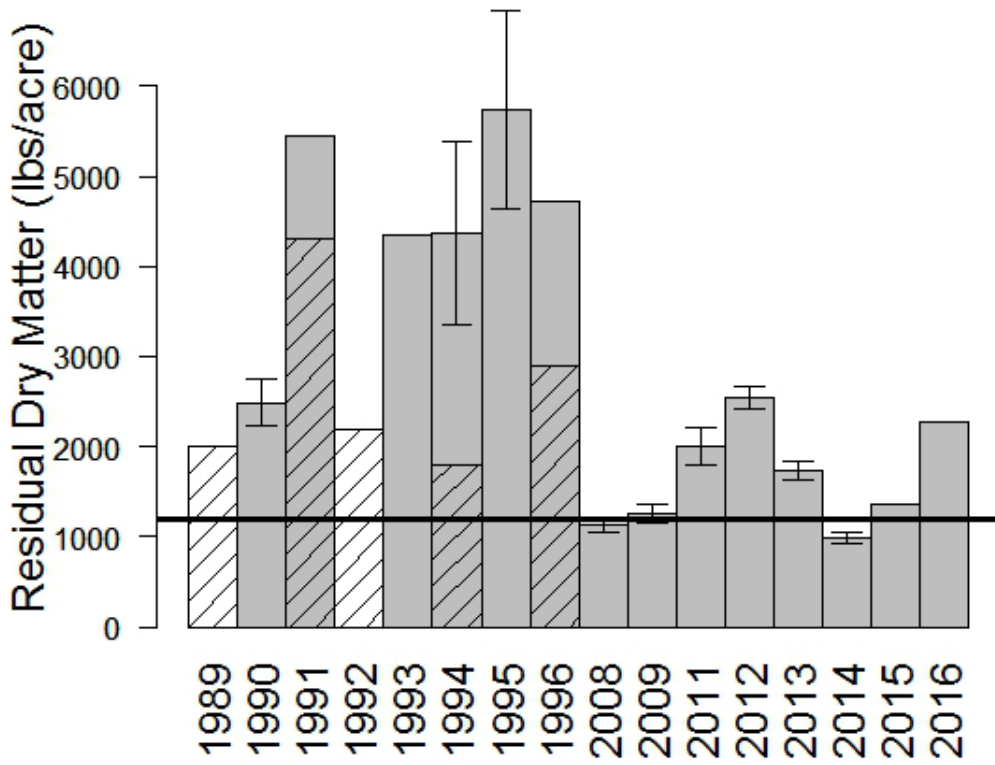
Bear Valley (7)



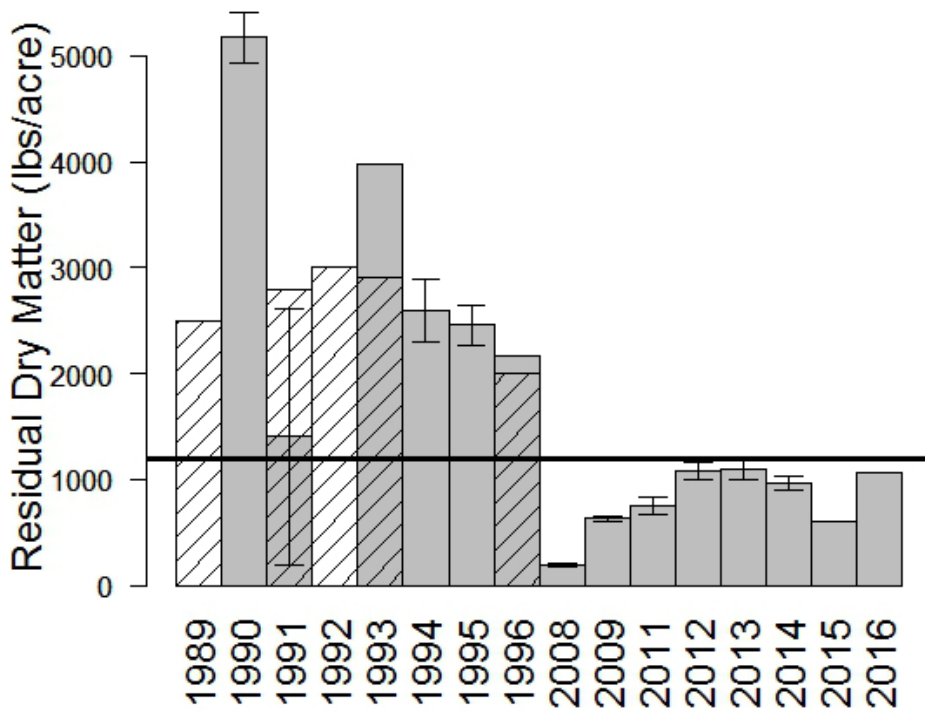
R Giacomini (8)



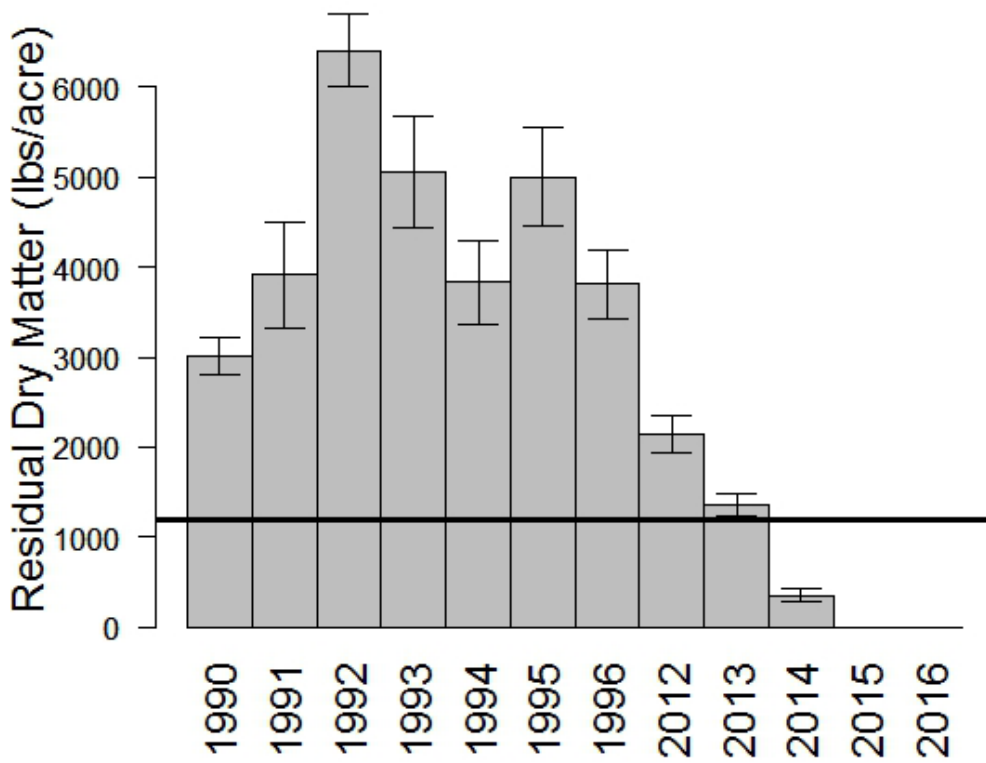
Stewart (9)



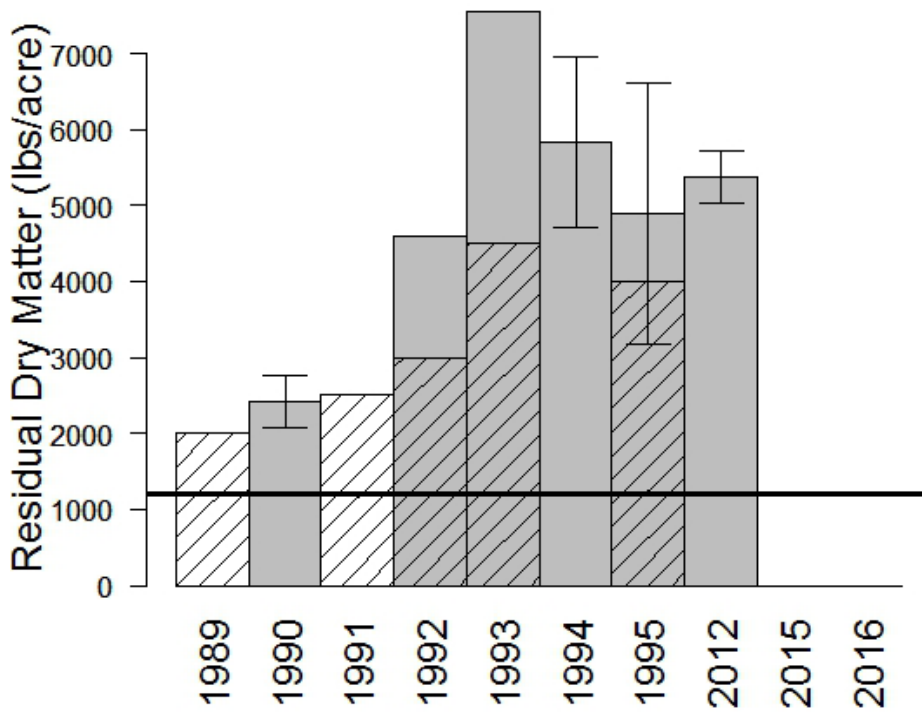
Martinelli (10)



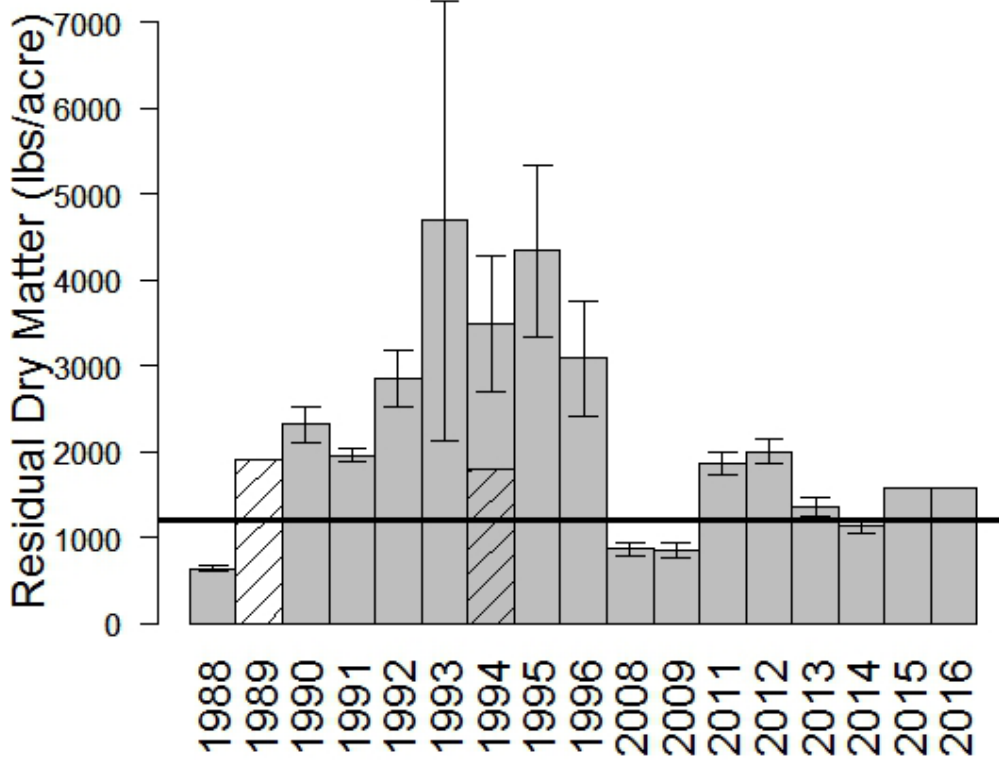
Beebe East (11)



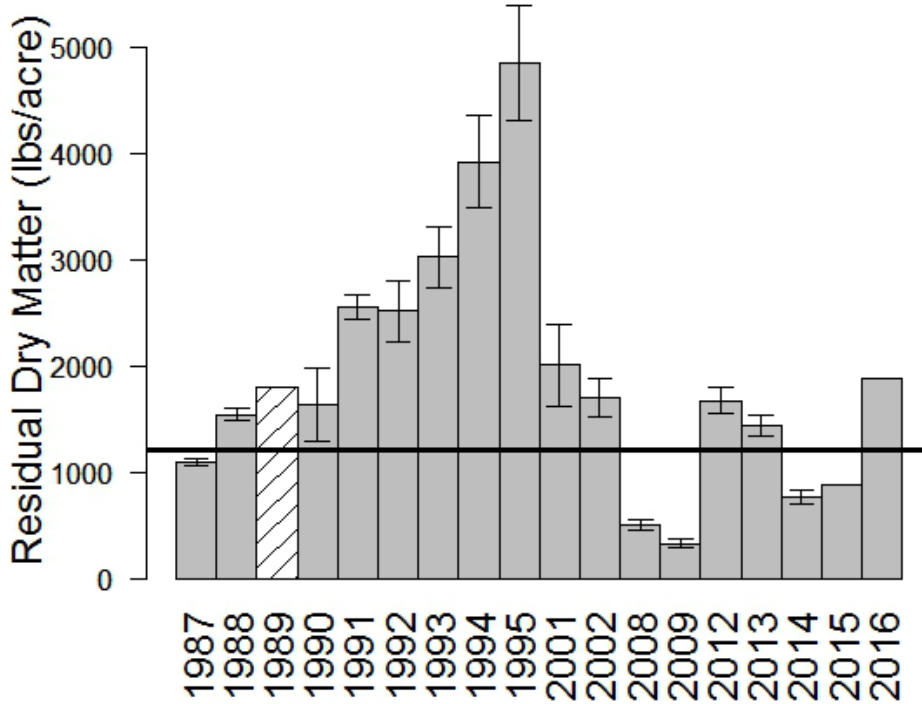
Olema Marsh (12)



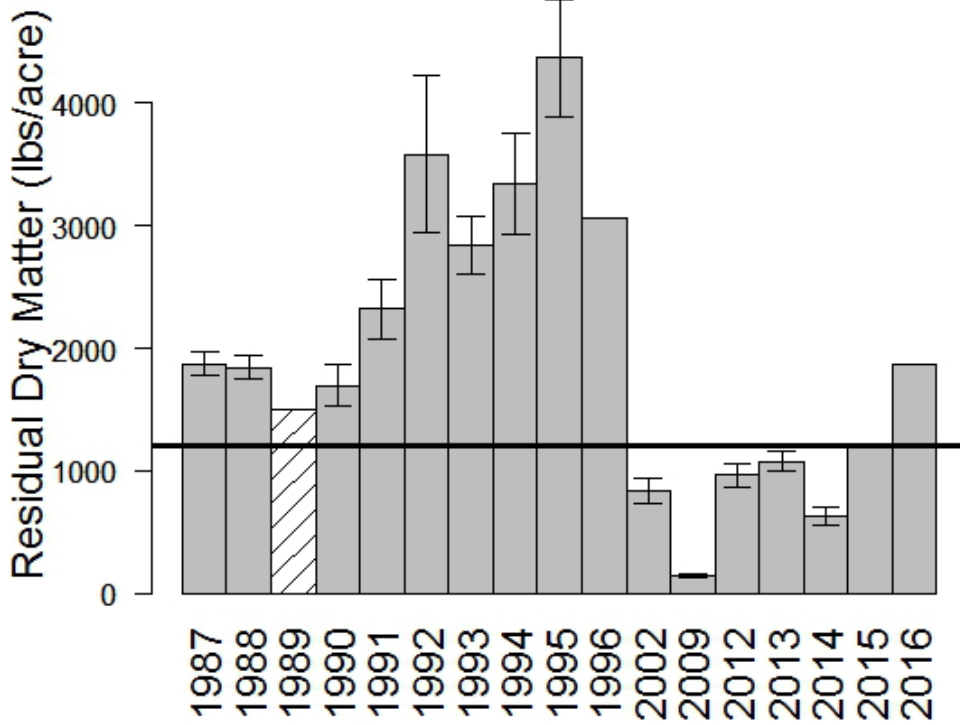
Mclsaac Bolinas (13)



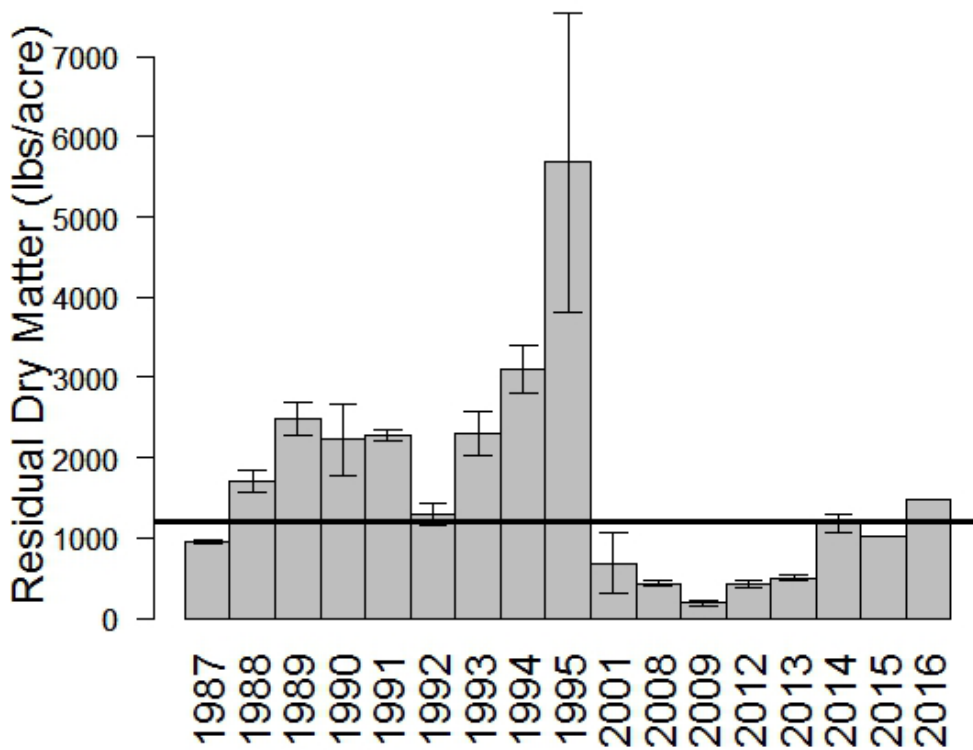
J Ranch North (14)



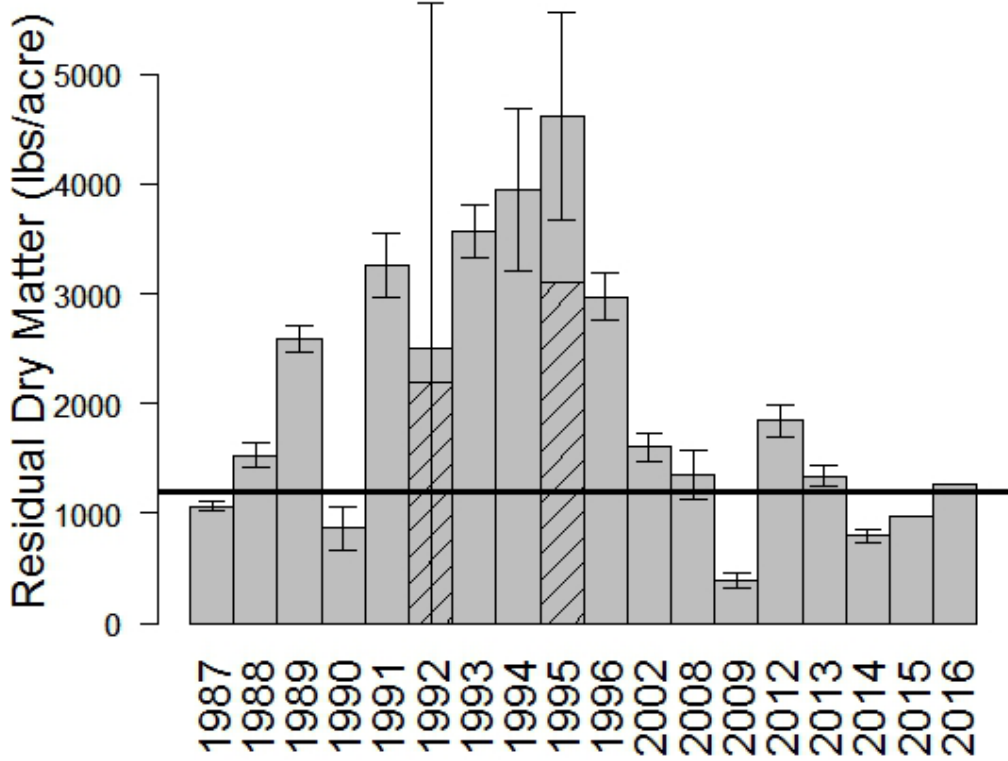
J Ranch East (15)



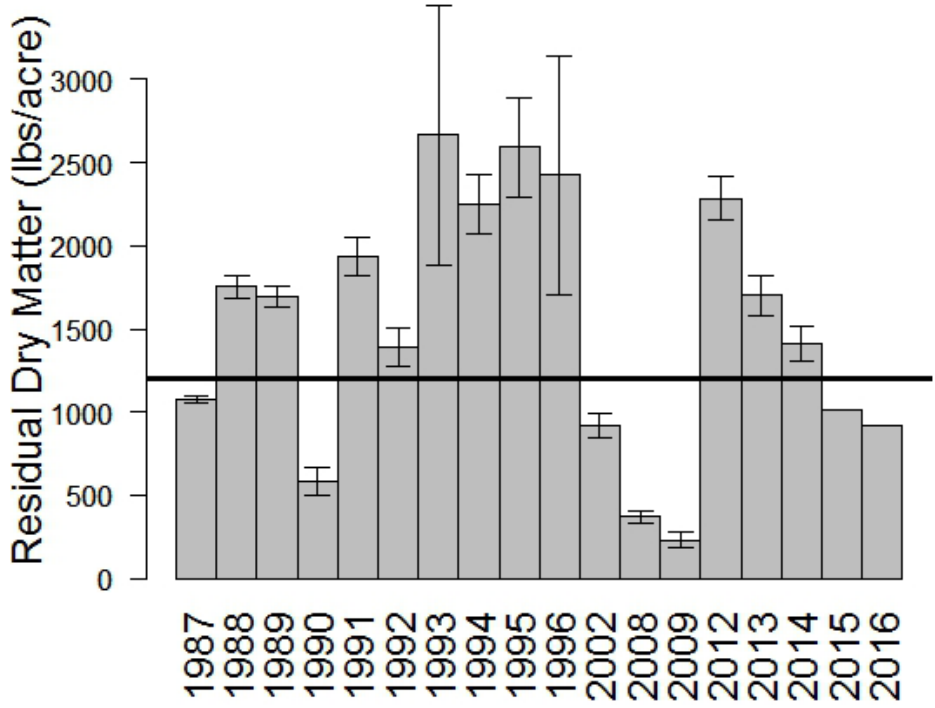
A Ranch (16)



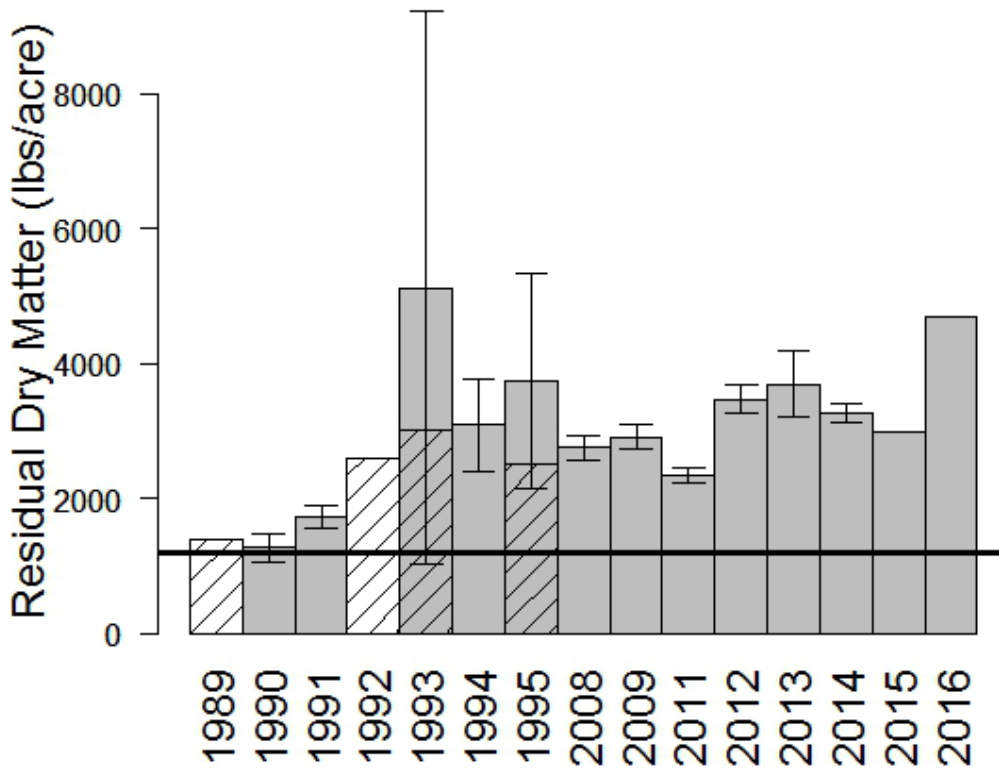
C Ranch (17)



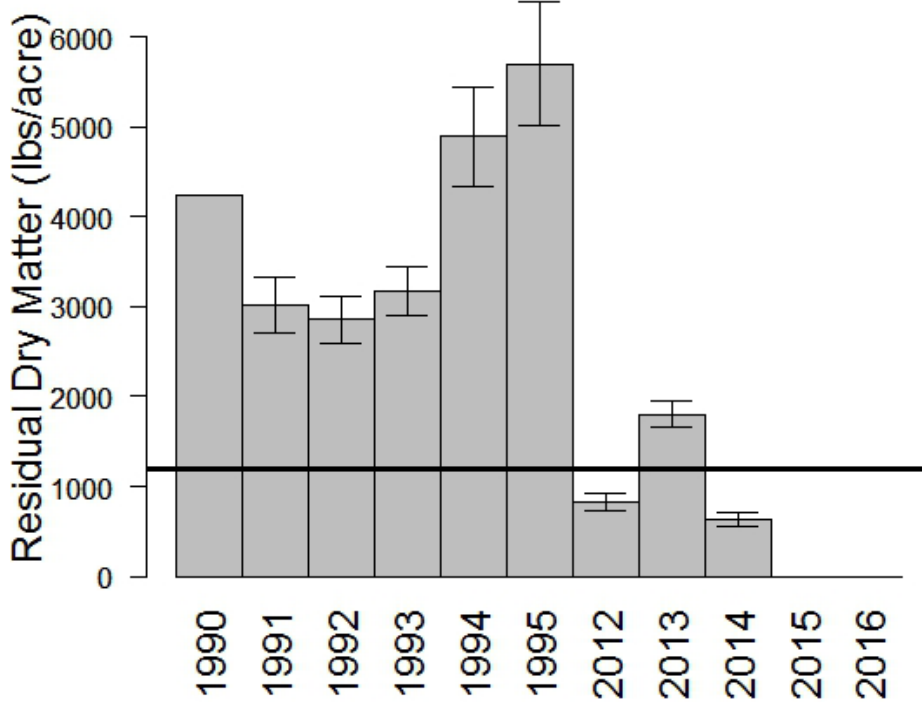
F Ranch (18)



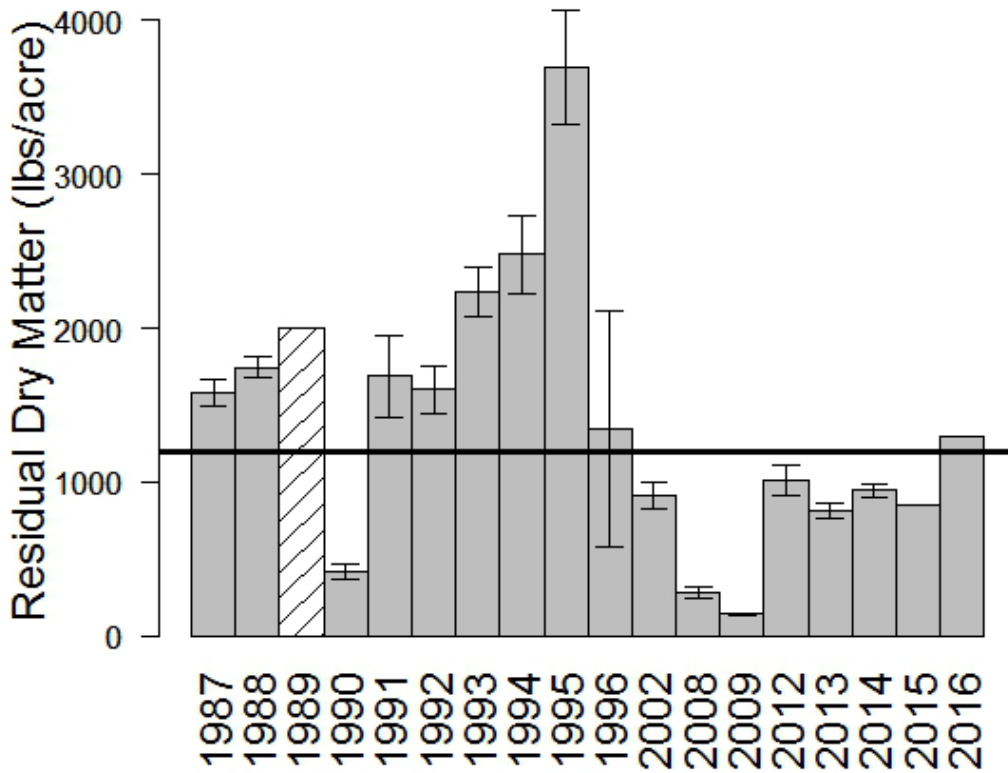
E Gallagher (19)



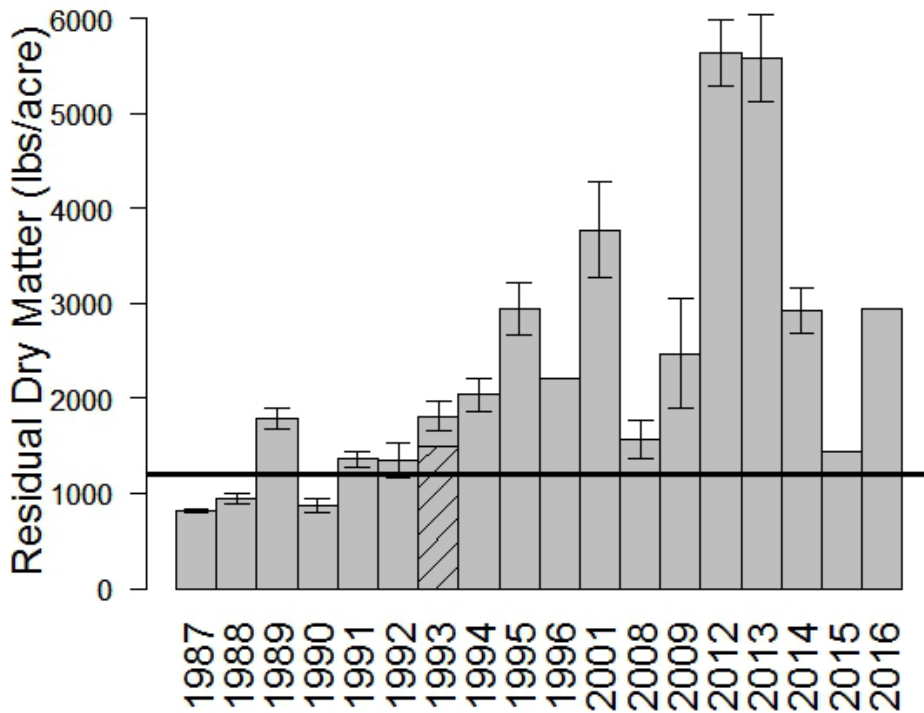
Abbots Lagoon (20)



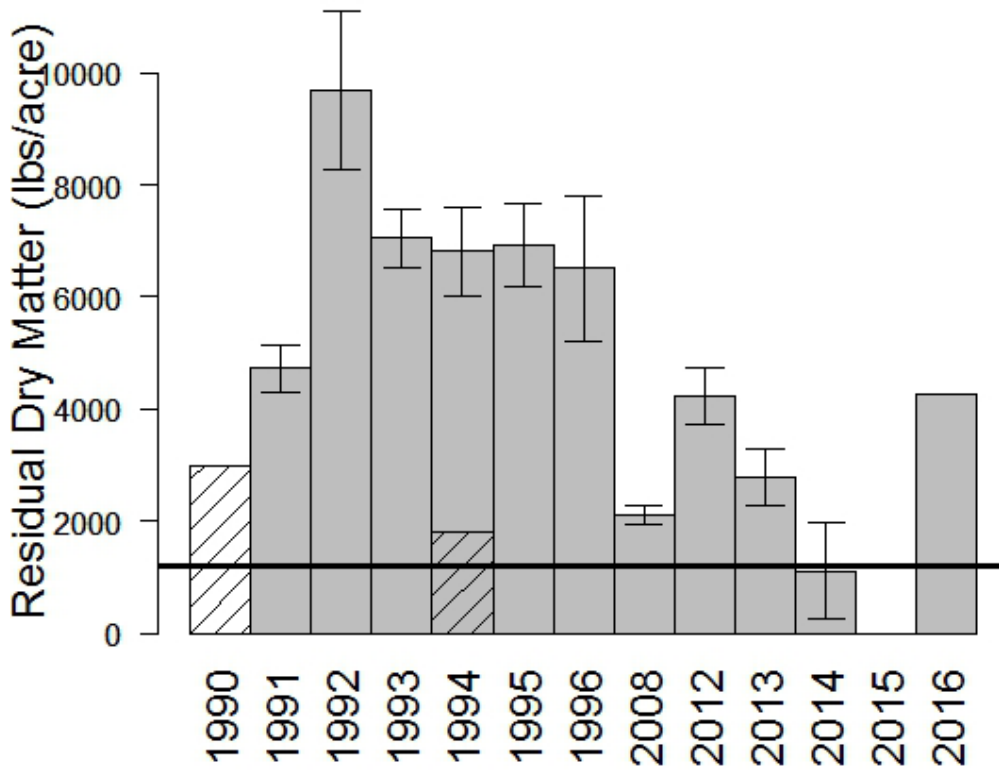
N Ranch (21)



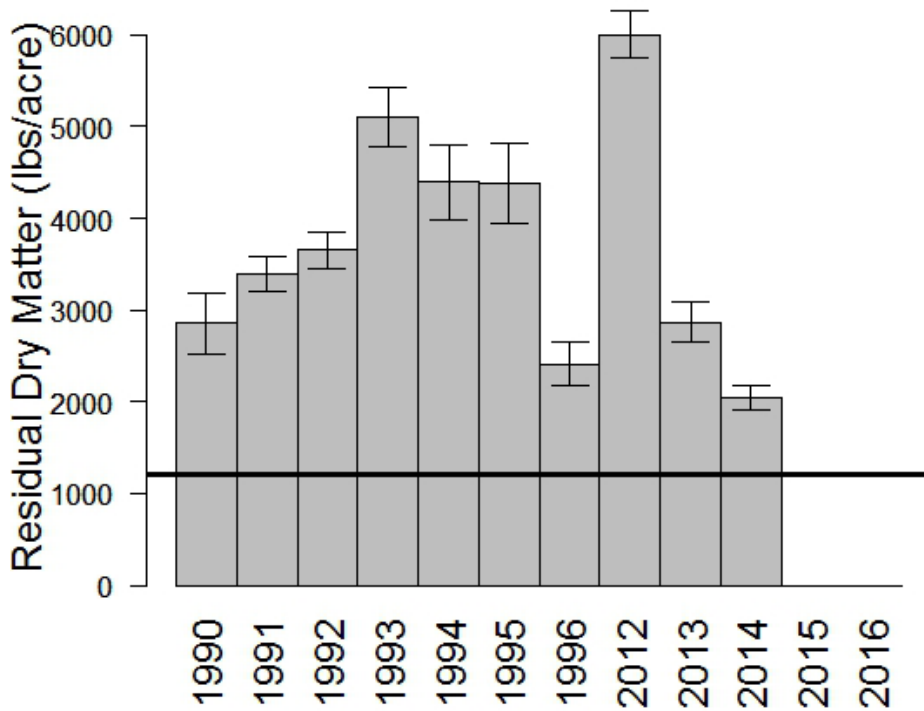
G Ranch (22)



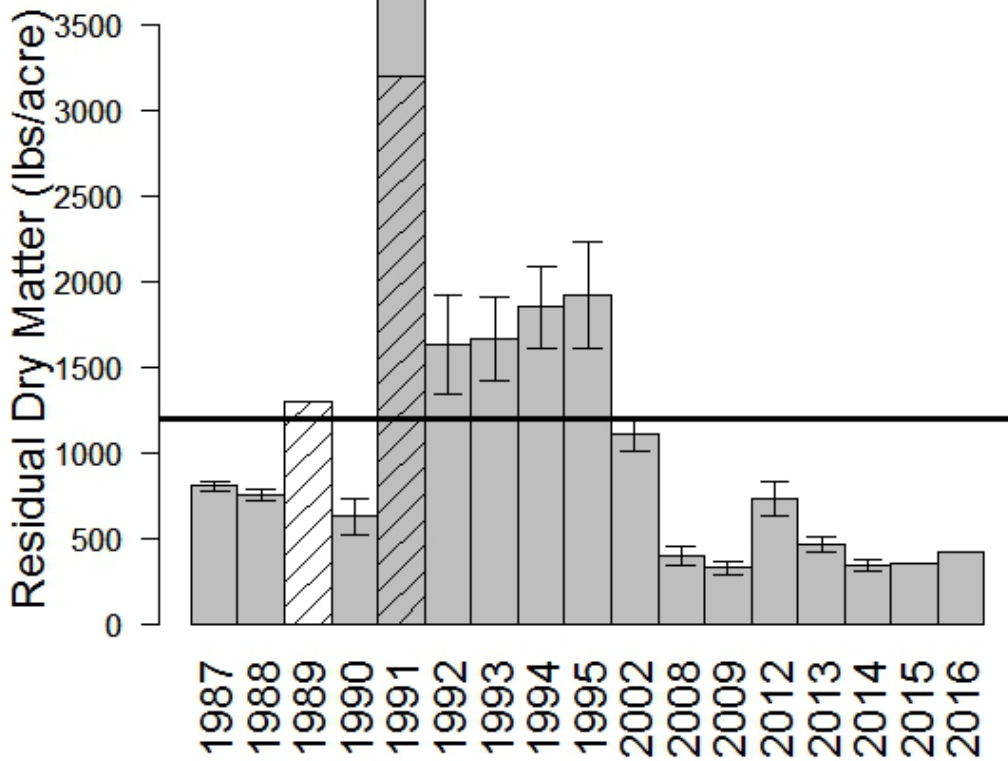
Beebe South (23)



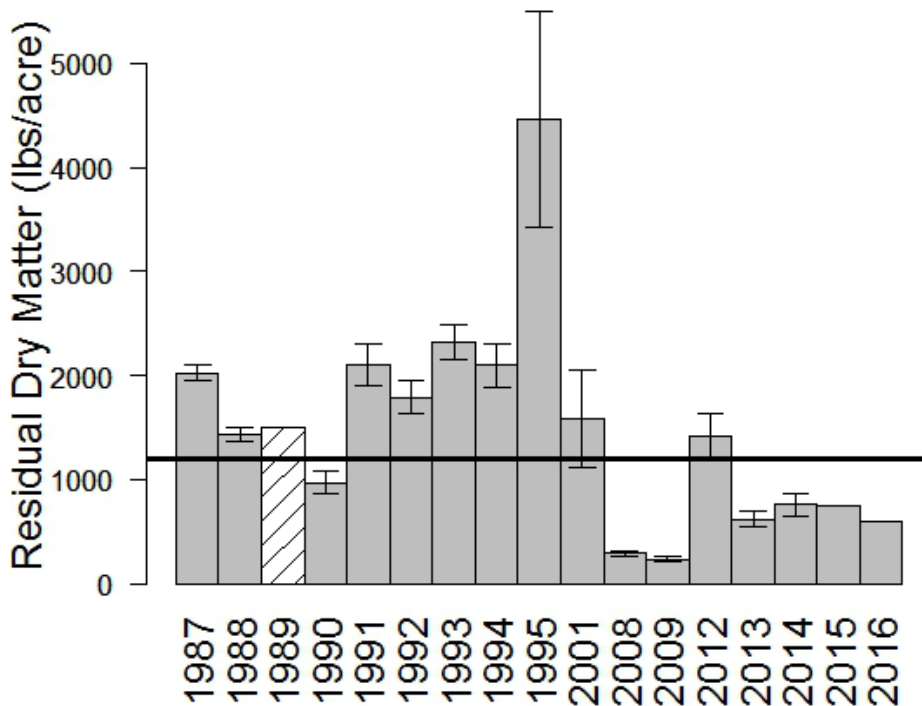
Limantour (24)



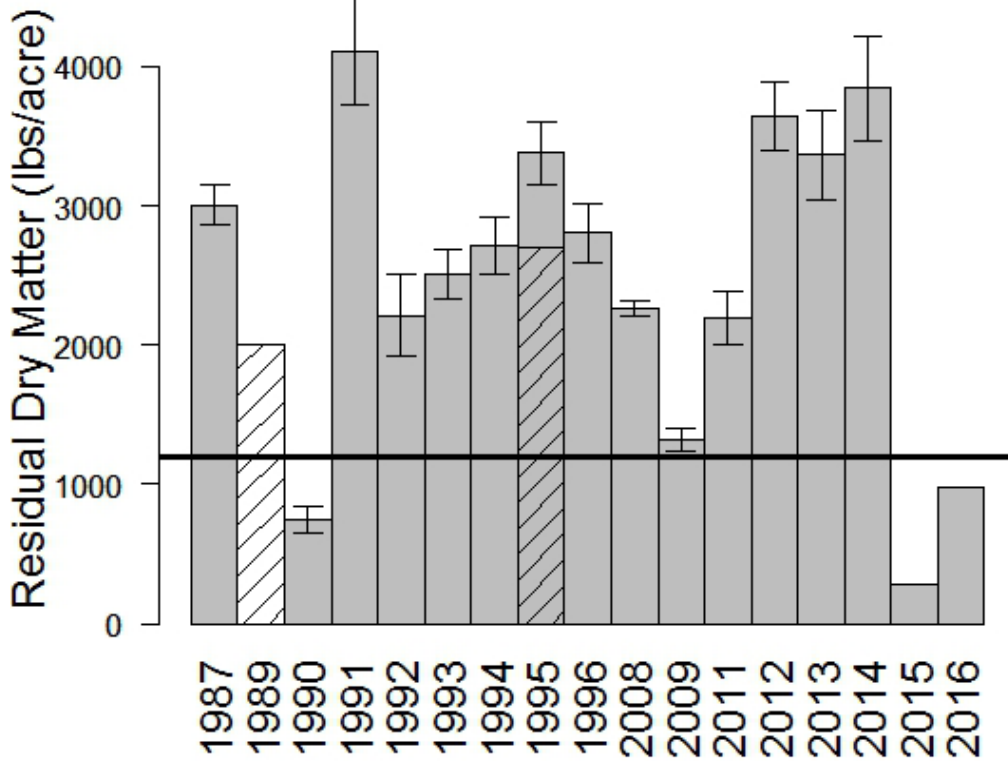
K Ranch Kehoe (25)



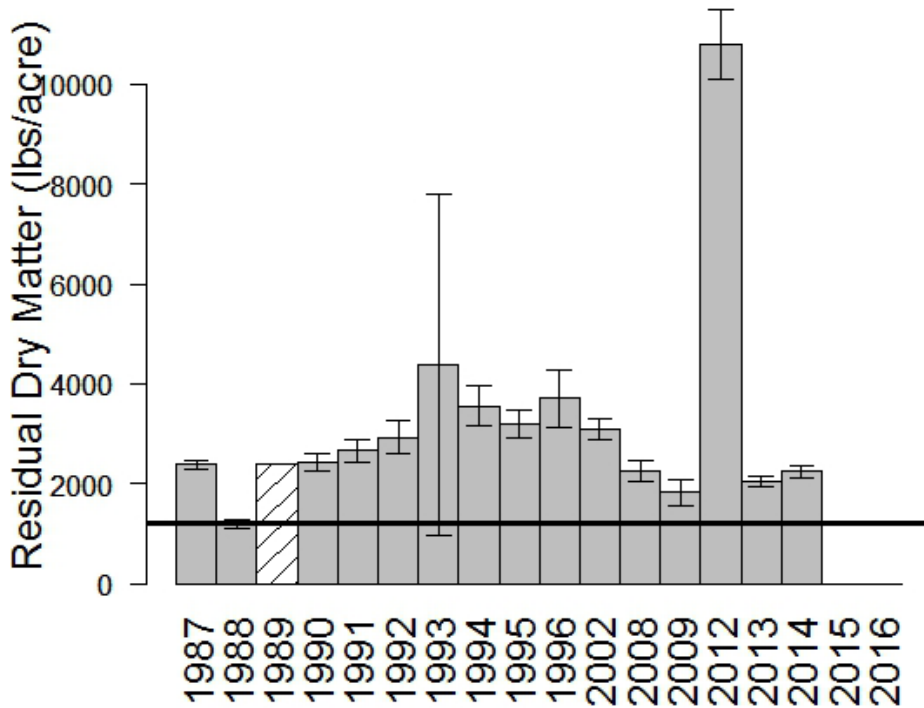
K Ranch Evans (26)



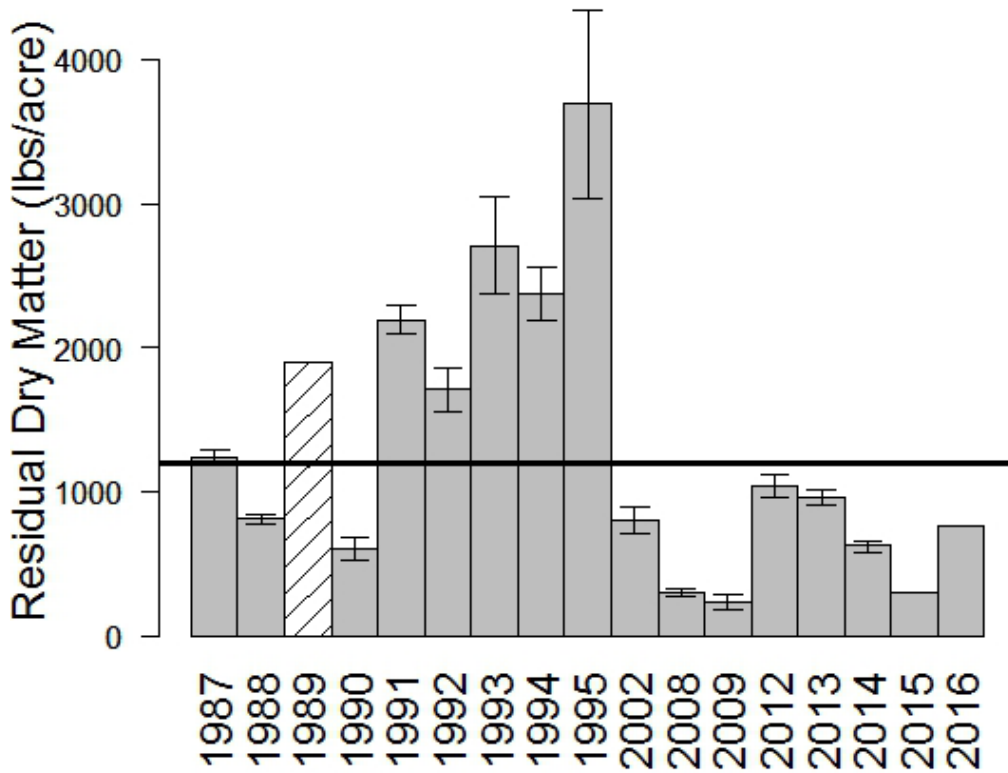
Commonweal (27)



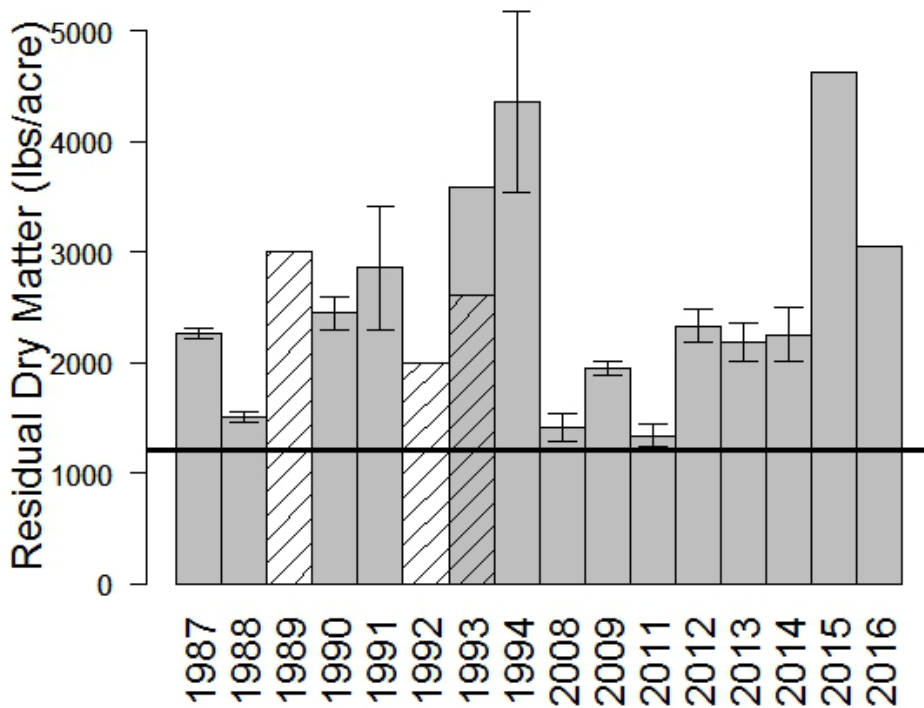
Dogtown (28)



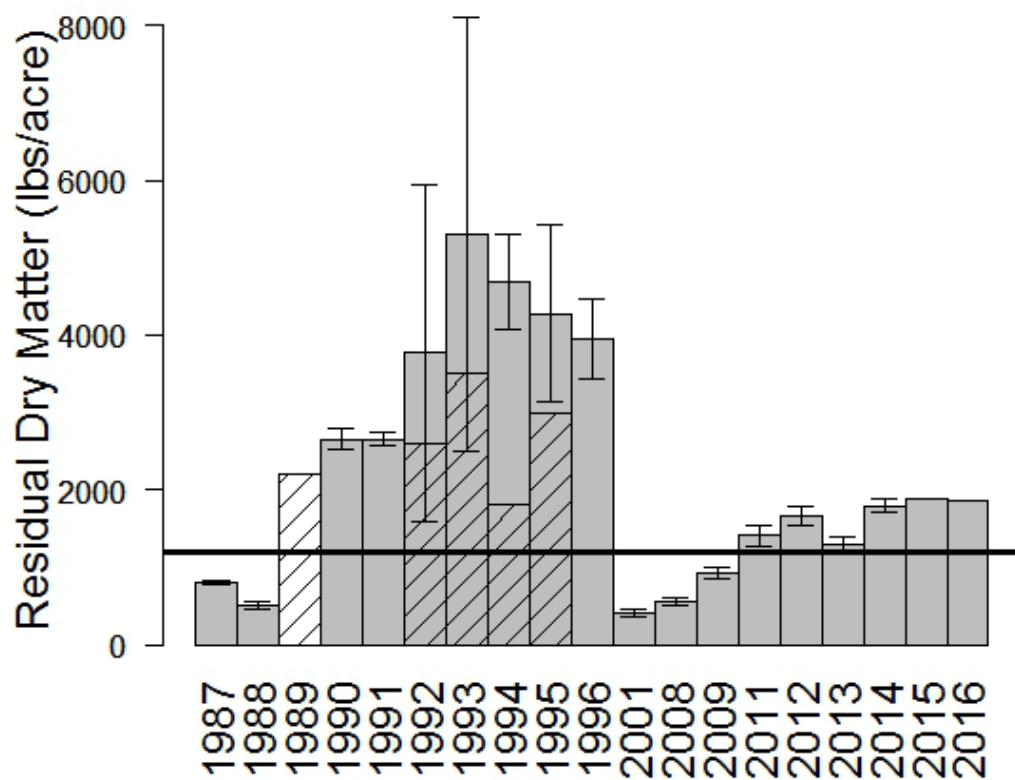
Home Ranch (29)



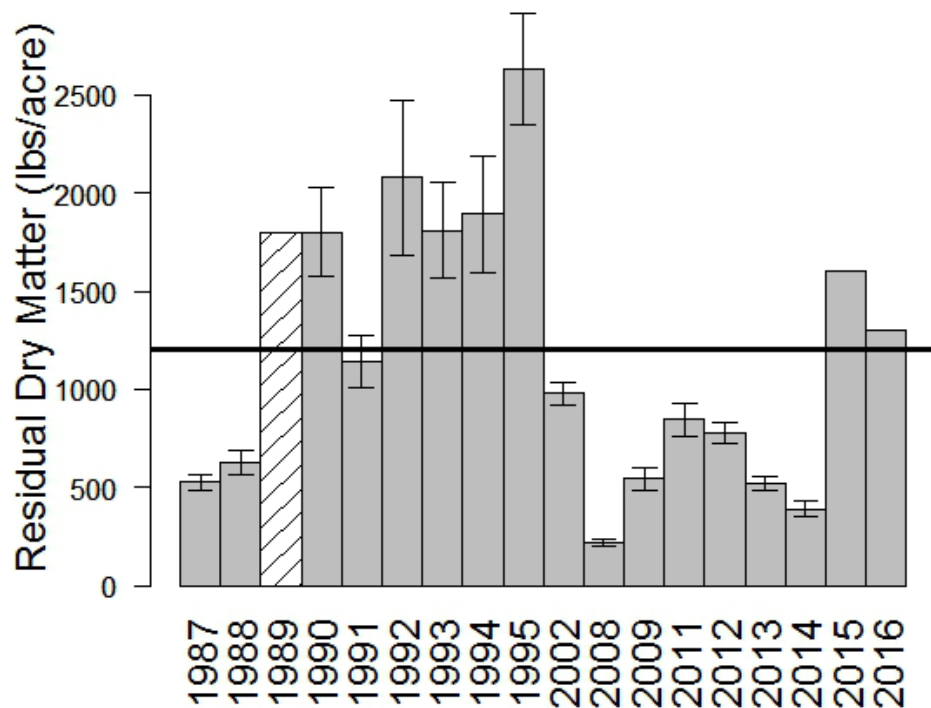
Bear Valley (30)



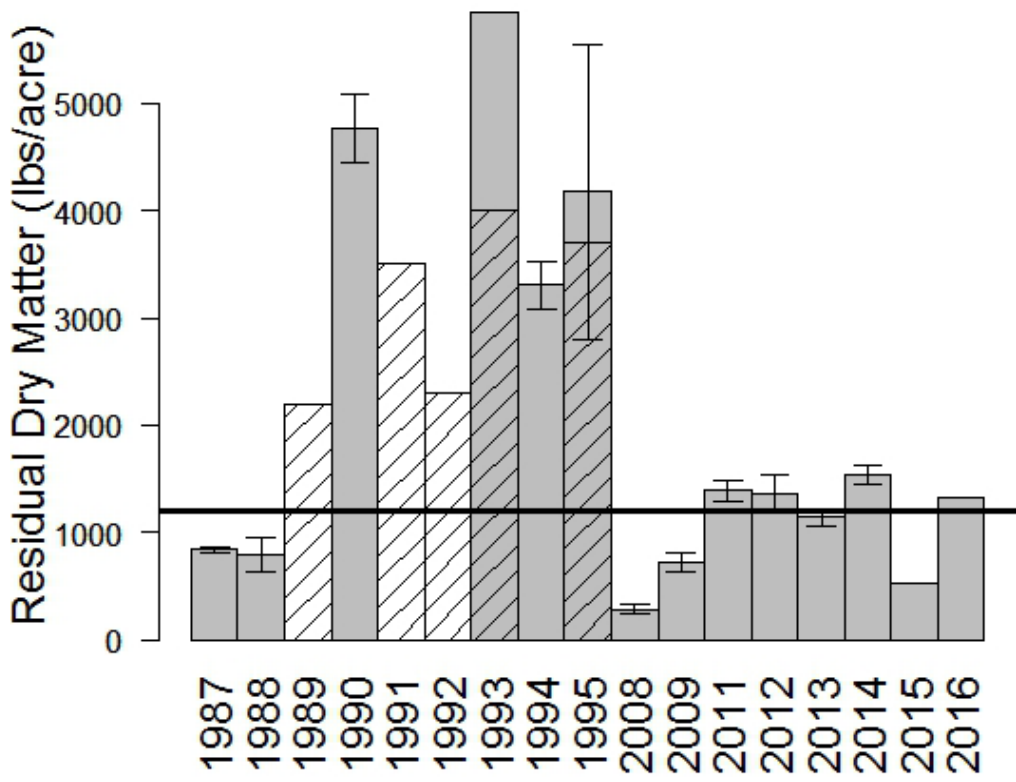
Mclsaac West (31)



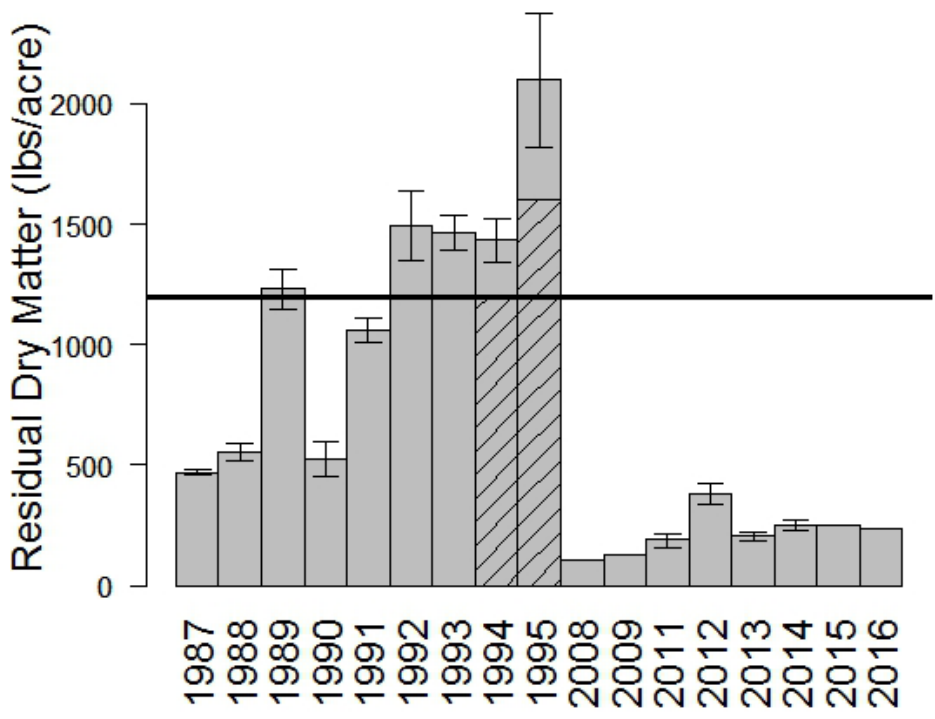
Percy (32)



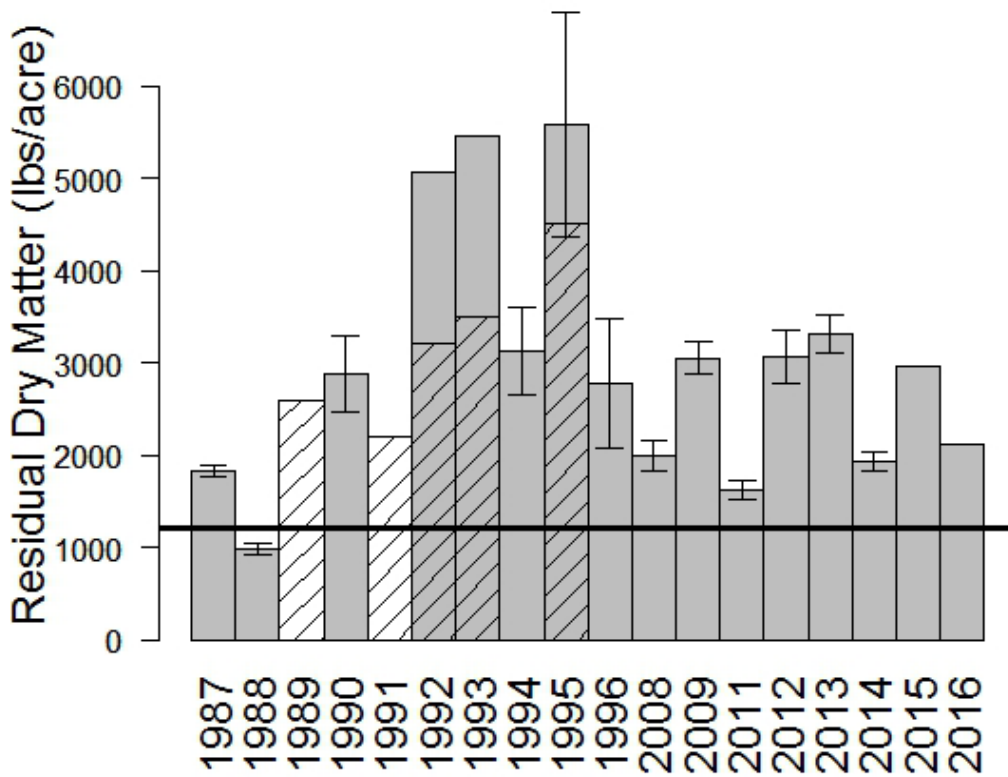
C Rogers (33)



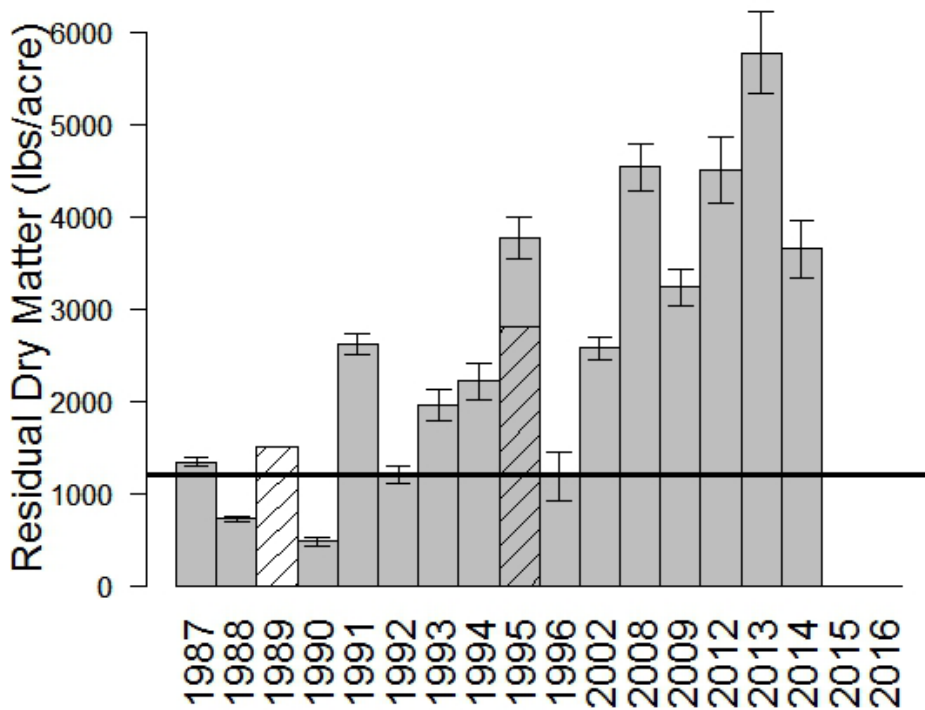
Cheda (34)



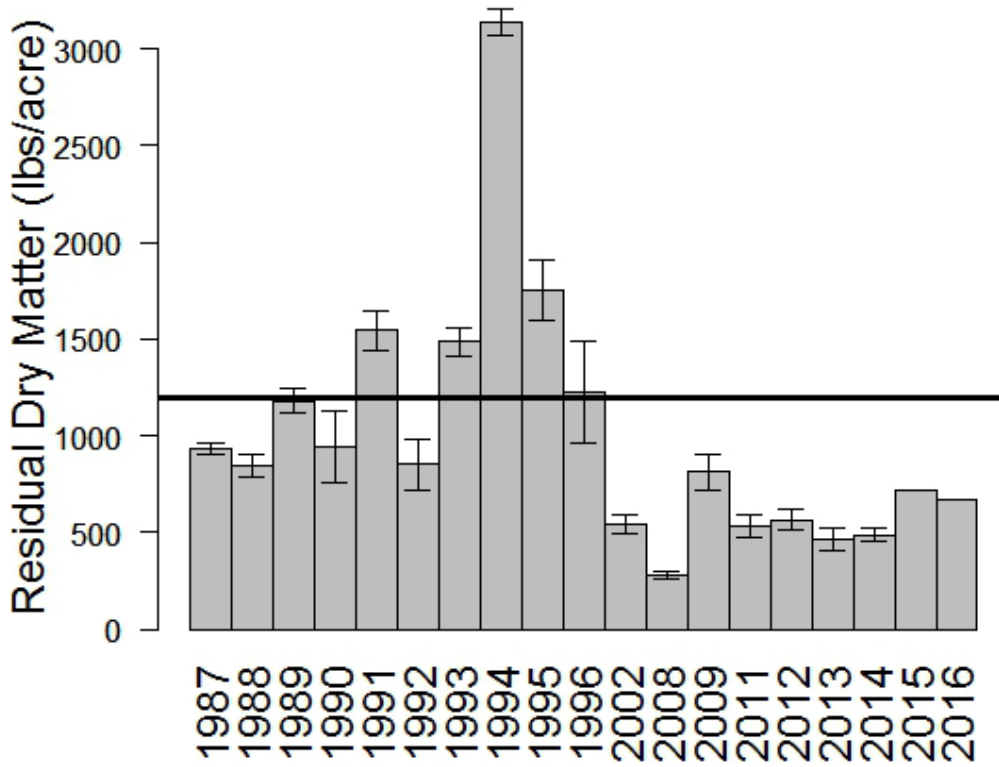
Stewart (35)



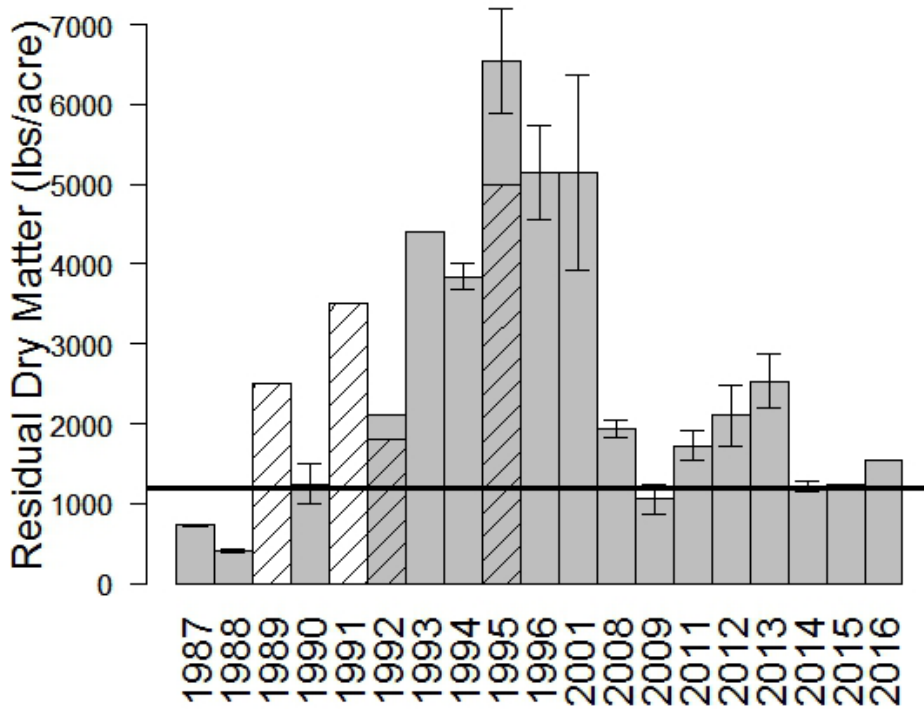
Tacherra (36)



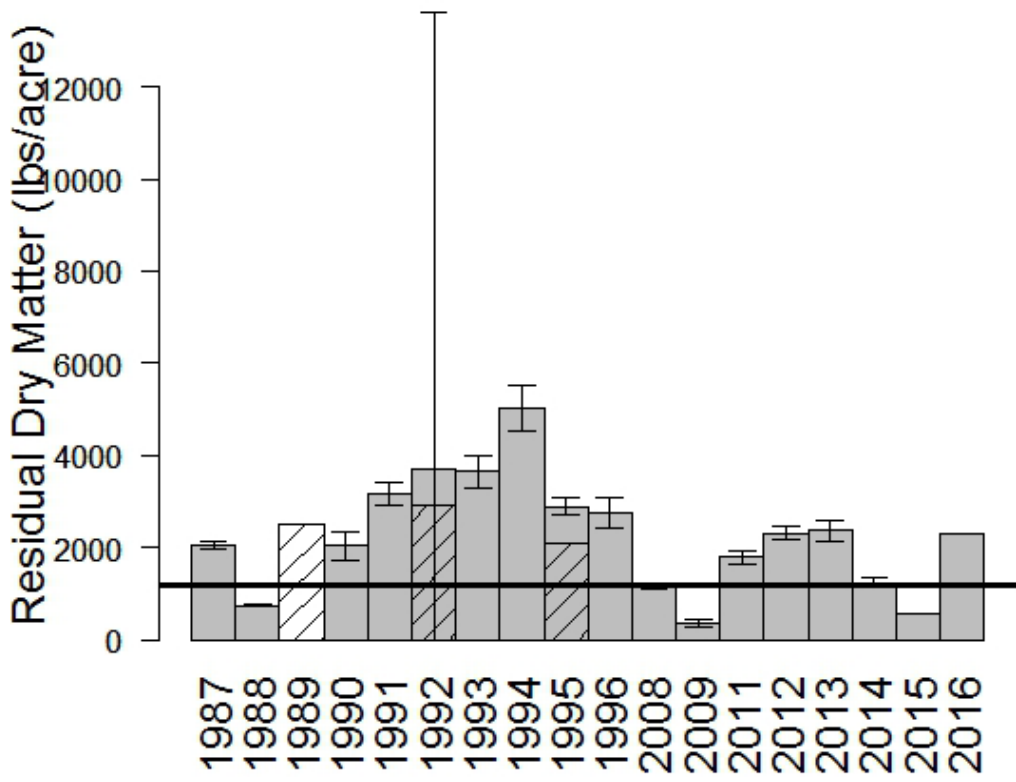
Zanardi (37)



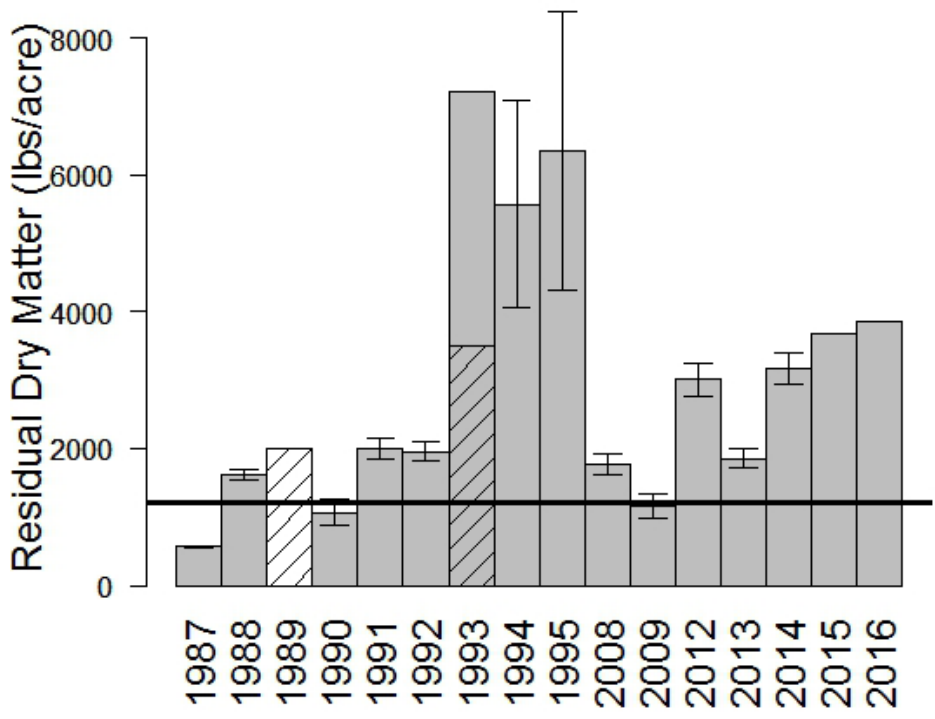
Commonweal (38)



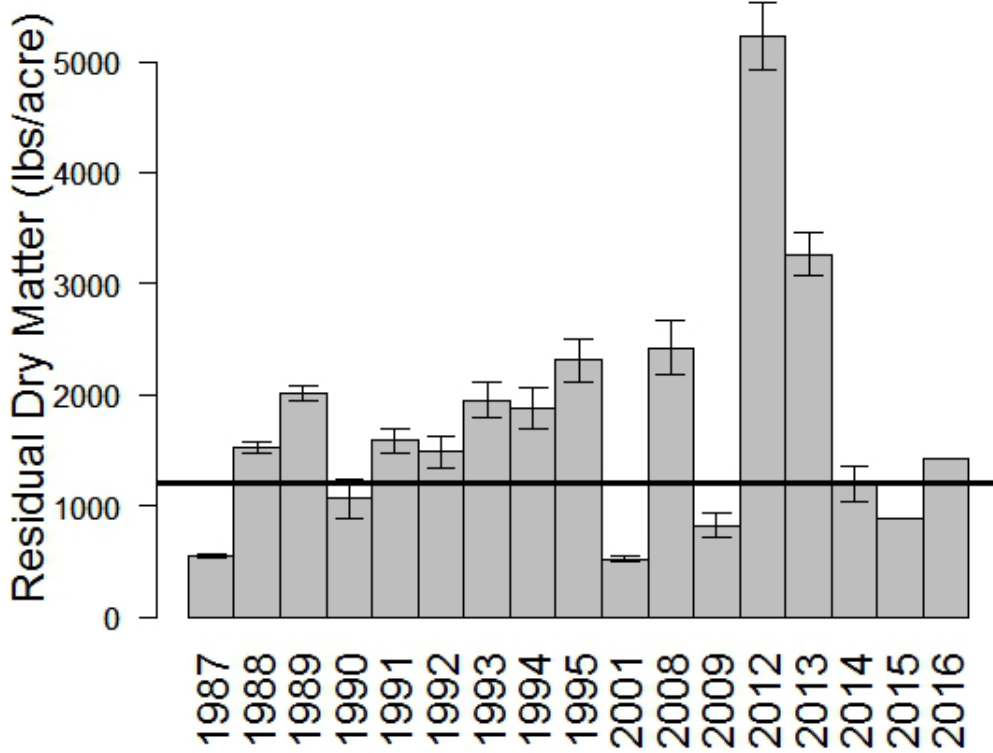
Niman (39)



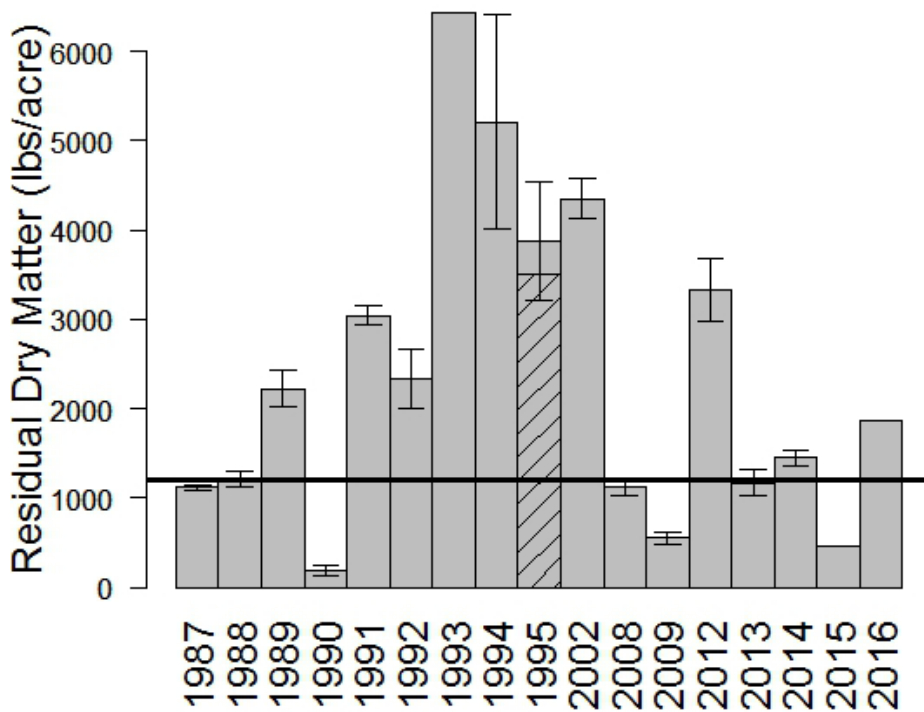
A Ranch (40)



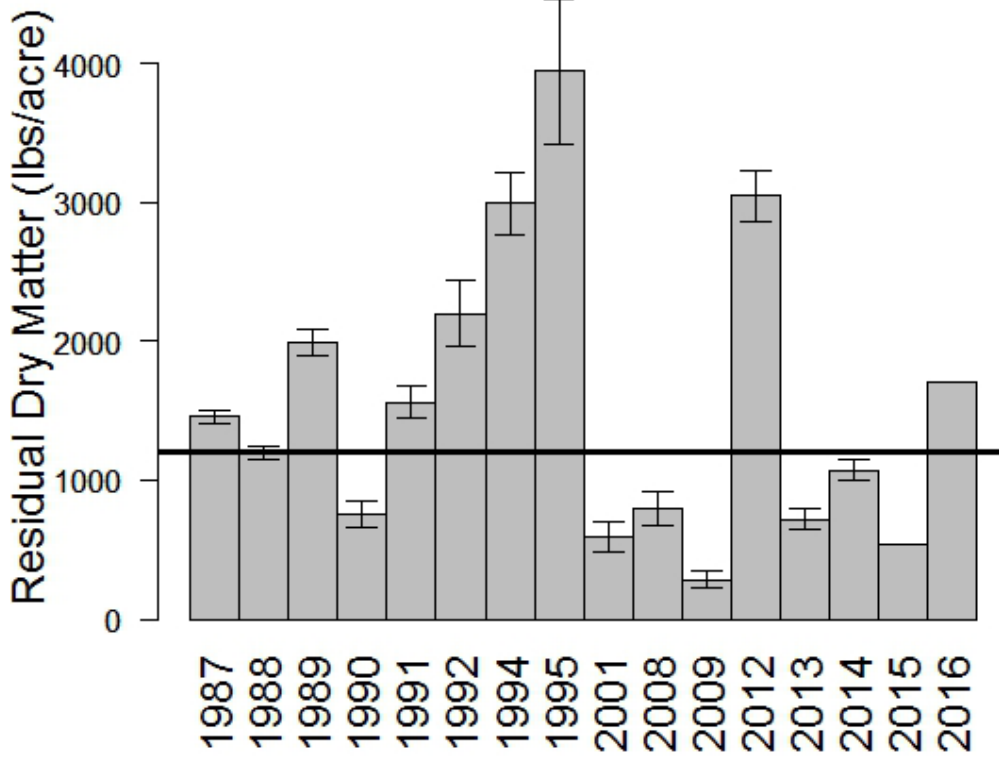
E Ranch (41)



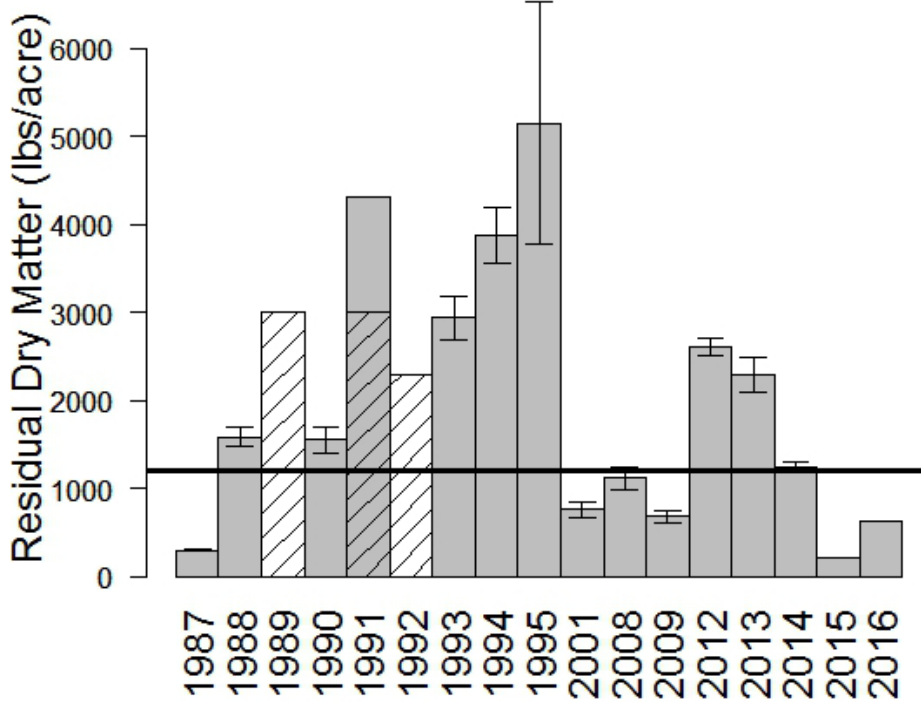
D Ranch Nunes (43)



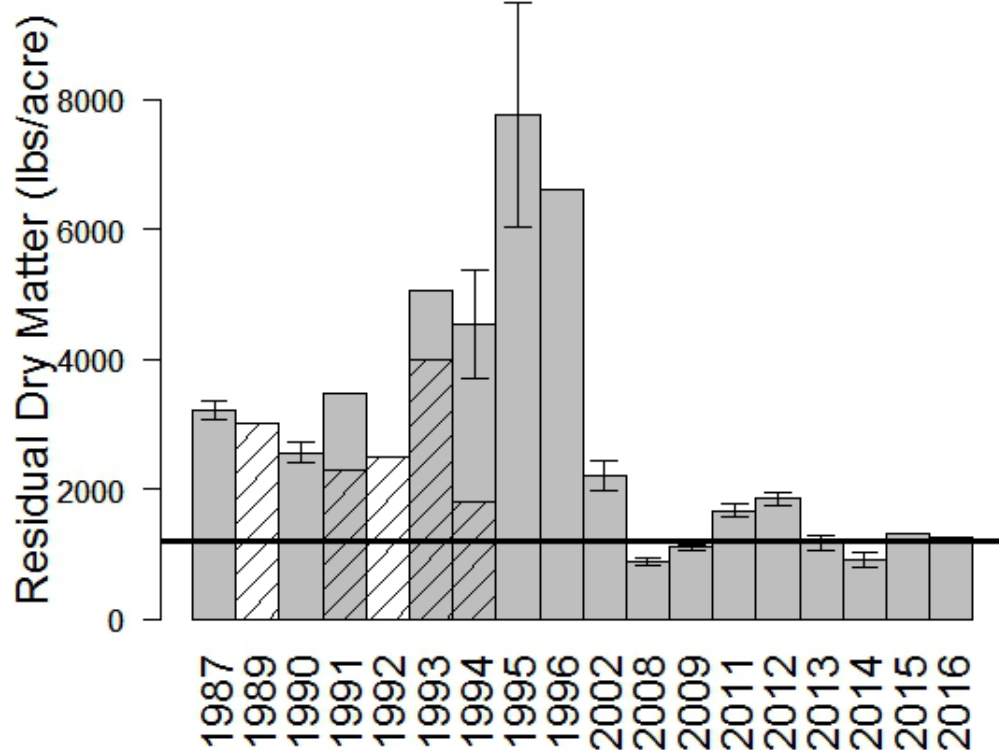
B Ranch (42)



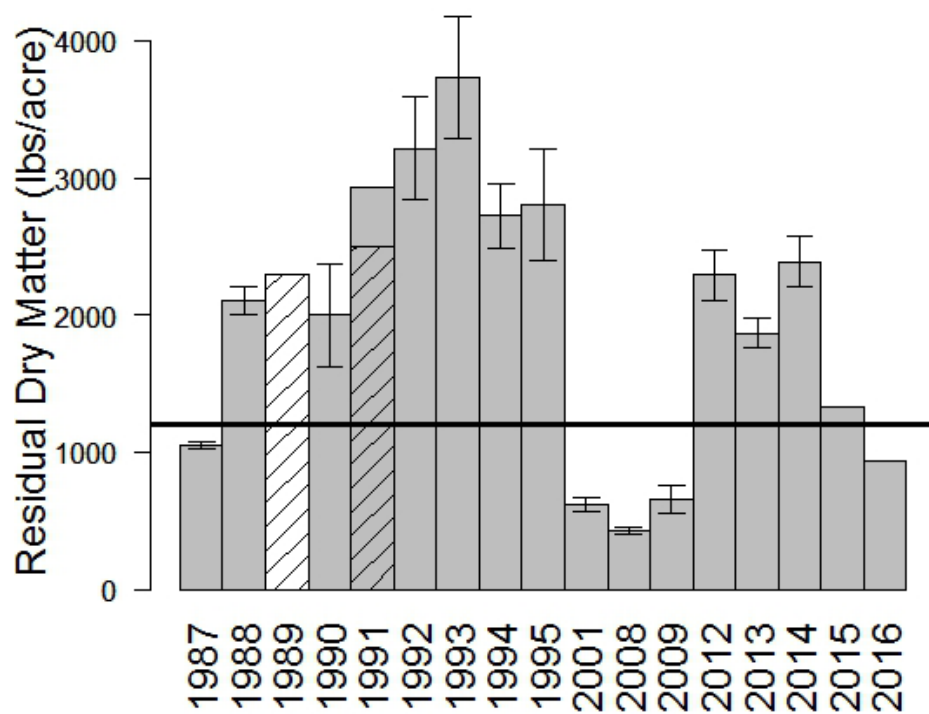
M Ranch (44)



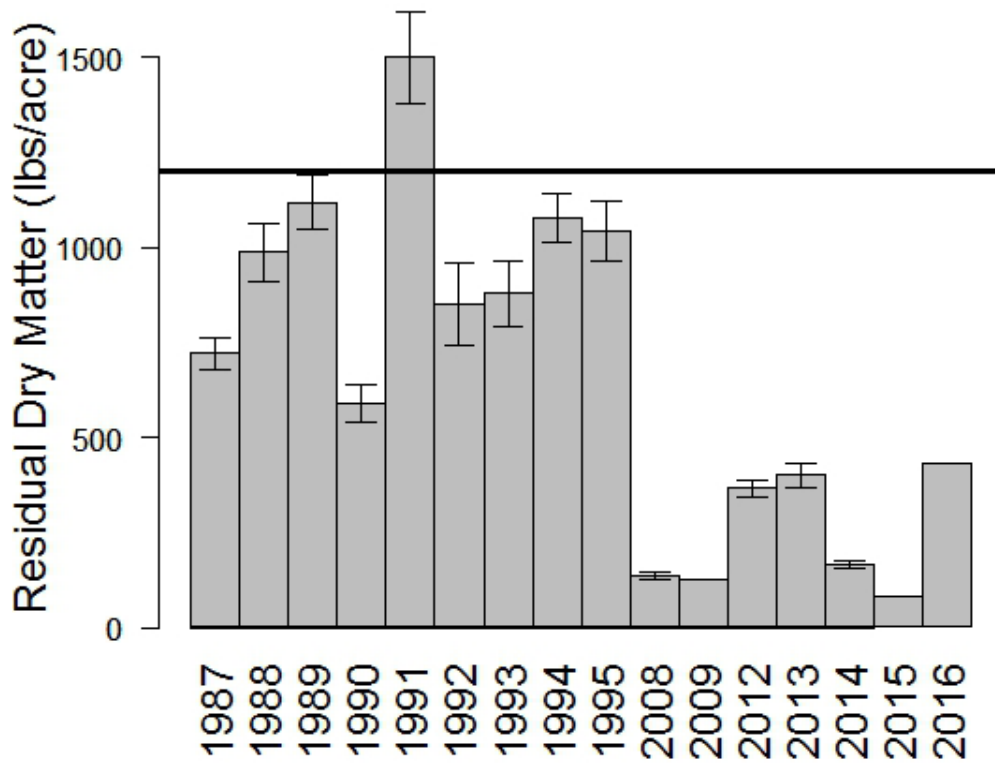
I Ranch (45)



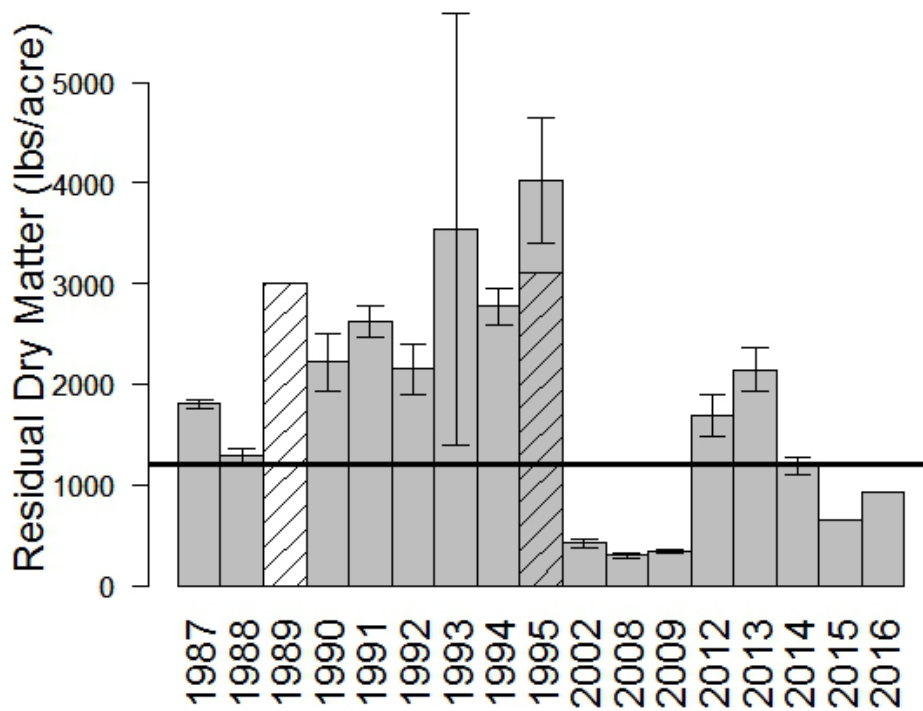
H Ranch (46)



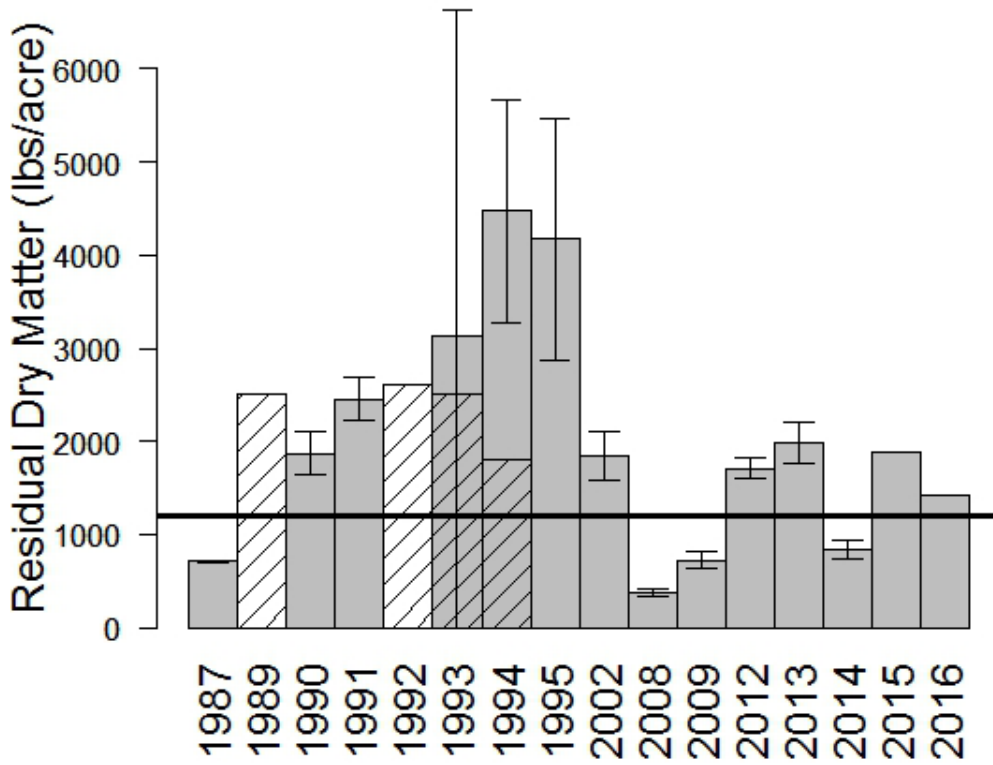
J Ranch West (47)



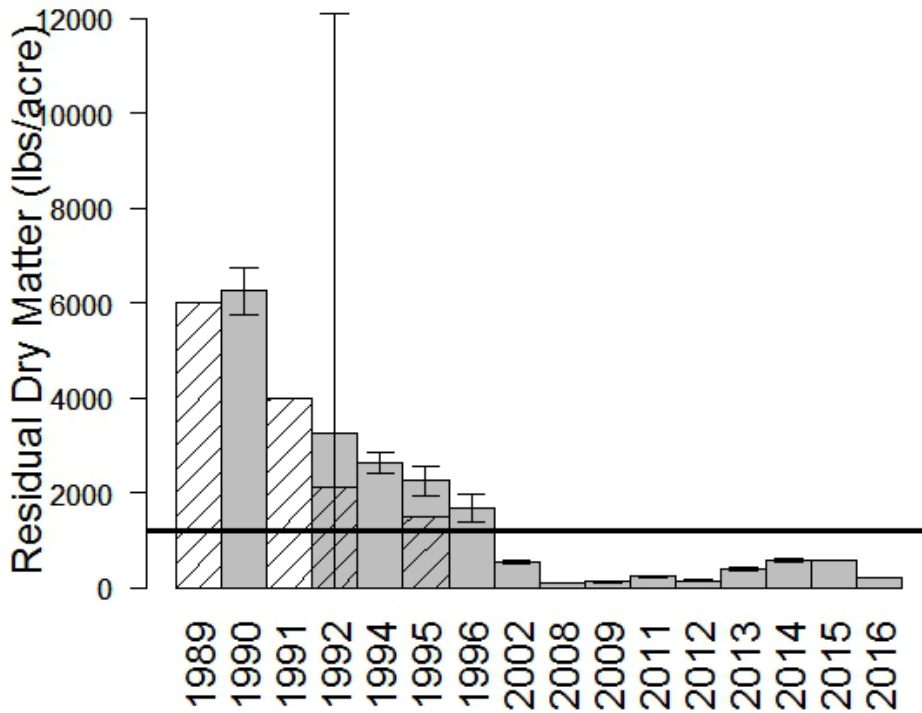
D Rogers (48)



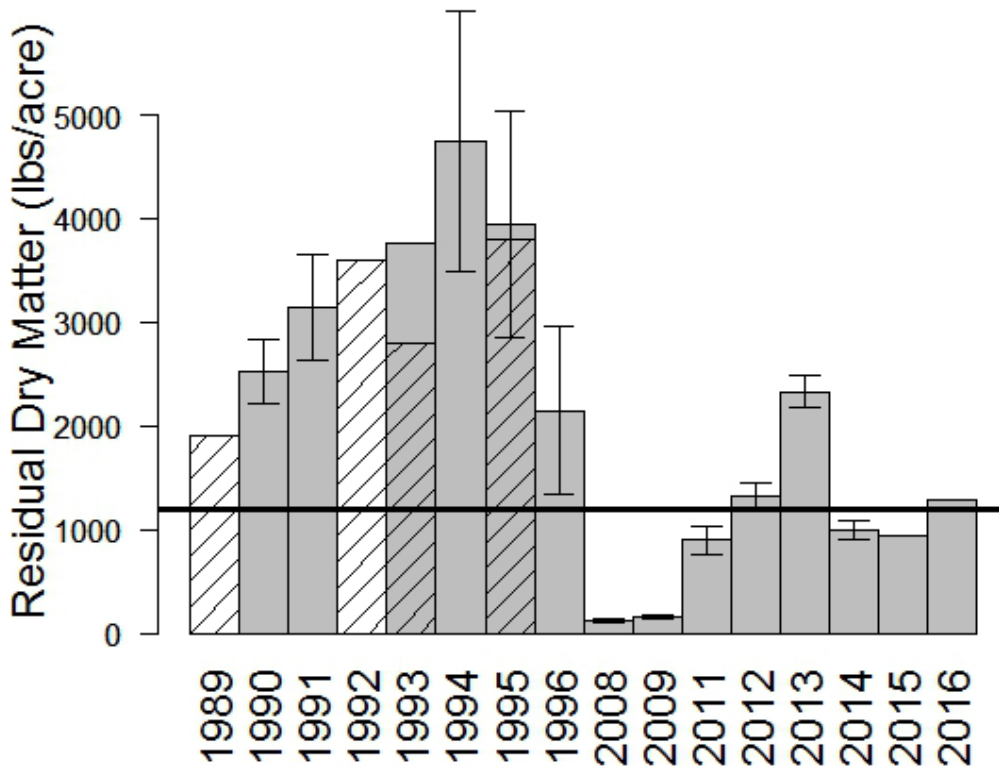
L Ranch (49)



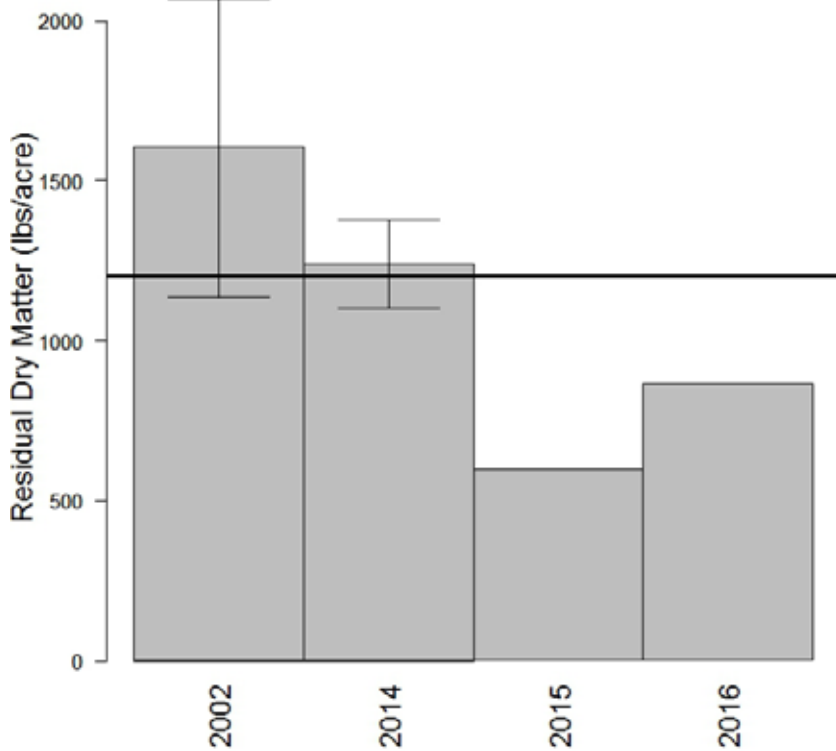
Genazzi (50)



McFadden (51)



AT&T (57)



Mclsaac East (58)

