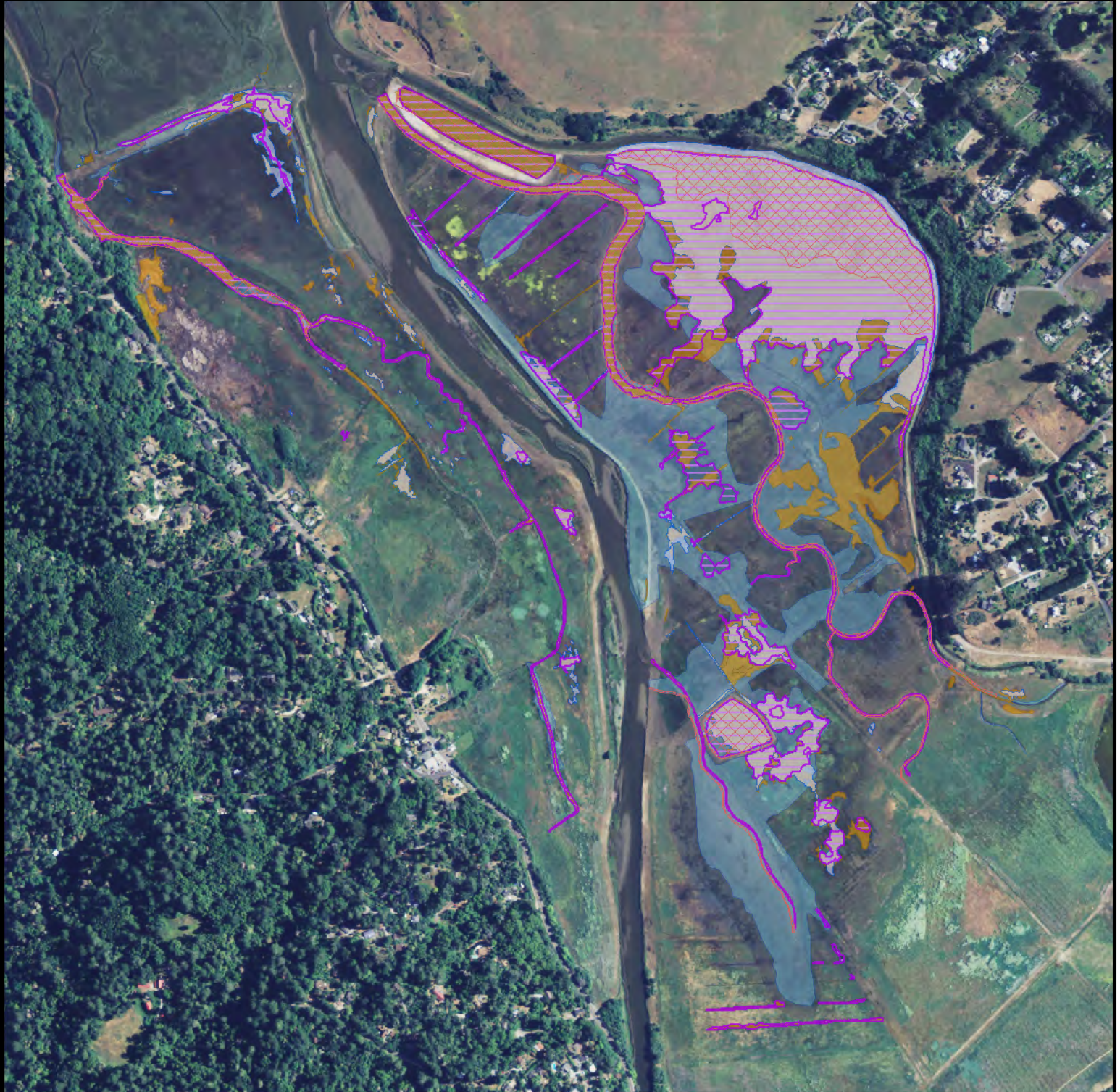


2008, 2009, 2010 and 2011 Low Tidelines

Giacomini Wetland Restoration Project








Location Map



National Park Service Point Reyes National Seashore/ Golden Gate National Recreation Area Marin County, CA

Subtidal extents were mapped using a combination of aerial photography and direct observation. Handheld GPS units were used to collect data.

Subtidal areas were predicted using information provided by KHE (2006), including topographical elevations, tidal datum information, and hydraulic modeling.

-  Predicted Subtidal Extents
-  Low Tide 2009 - Neap Tide
-  Low Tide 2011 - Spring Tide
-  Low Tide 2010 - Spring Tide
-  Low Tide 2008 - Spring Tide



In 2008, low tides ranged from -0.44 to -1.74 feet MLLW at Inverness.

In 2009, low tides ranged from 1.88 to 2.69 feet MLLW at Inverness.

In 2010, low tides ranged from -1.67 to -1.54 feet MLLW at Inverness.

In 2011, low tides ranged from -1.29 to -1.24 feet MLLW at Inverness.