
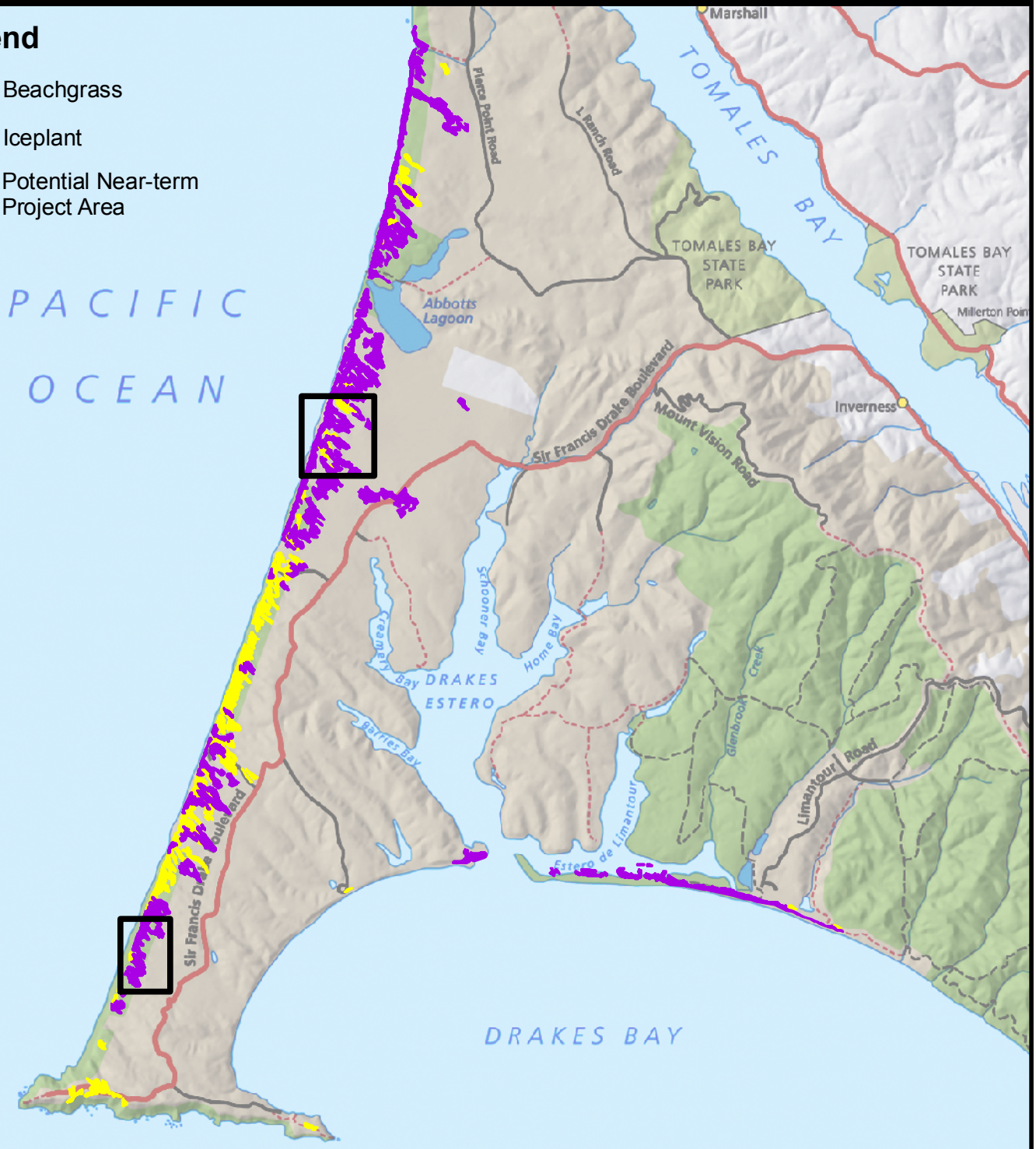


Restoring Critical Dune Habitat Throughout the Seashore: Programmatic Environmental Assessment
Point Reyes National Seashore



Legend

-  Beachgrass
-  Iceplant
-  Potential Near-term Project Area



National Park Service
Point Reyes National Seashore
Marin County, California

0 1 2 Miles



This graphic shows the approximate extent of areas within the Seashore invaded by non-native European beachgrass and iceplant as of 2000. While it is likely infeasible to remove all iceplant or beachgrass in the Seashore, the objective of the proposed program is to restore those areas of native dune habitat that show the highest potential to support endangered, threatened or rare plant and wildlife species. The two areas outlined in black are proposed as initial projects under this EA.