



Superintendent's Compendium
Of Designations, Closures, Permit
Requirements and Other Restrictions
Imposed Under Discretionary Authority.

541-592-2100 phone
541-592-3981 fax

Approved:

Jeremy Curtis, Superintendent

In accordance with regulations and the delegated authority provided in Title 36, Code of Federal Regulations ("36 CFR"), Chapter 1, Parts 1-7, authorized by Title 54 U.S.C. 100751 the following regulatory provisions are established for the proper management, protection, government and public use of those portions of Oregon Caves National Monument & Preserve and apply to all persons entering, using, visiting, or otherwise within the boundaries of federally owned lands and waters administered by Oregon Caves National Monument & Preserve. Unless otherwise stated, these regulatory provisions apply in addition to the requirements contained in 36 CFR, Chapter 1, Parts 1-7.

Where required by Section 1.5(c), written determinations that explain the reasoning behind the Superintendent's use of discretionary authority appear in this document identified by italicized print.

It should be noted that this Compendium applies to the Oregon Caves National Monument and Preserve also referred to as monument. The monument was established by presidential proclamation on July 12, 1909 [No.876–July 12, 1909–36Stat.2497]. The monument was expanded as Oregon Caves National Preserve through Public Law 113-291 on December 19, 2014.

I. CLOSURES AND PUBLIC USE LIMITS

36 CFR §1.5 – VISITING HOURS, PUBLIC USE LIMITS, CLOSURES, AND AREA DESIGNATIONS FOR SPECIFIC USE OR ACTIVITIES

(a)(1) The following visiting hours and public use limits are established for all or for the listed portions of the monument and preserve, and the following closures are established for all or a portion of the monument and preserve to all public use or to a certain use or activity:

Visiting Hours:

- Oregon Caves National Monument and Preserve Grounds: Year-round, 24 hours a day.
- Visitor Centers at the National Monument and Illinois Valley Visitor Center hours are as posted.
- Guided tours will be conducted May through September no less than 5 days a week. Prior to and after this time frame tours will be made available based on weather, staffing, and hibernating bats.
- Cave Creek Campground is open to camping and day use Memorial Day Weekend through Labor Day Weekend.

Determination: Park Visitor Centers, campground, and services such as cave tours are open based upon personnel availability. Current hours of operation can be found by contacting Park Headquarters at 541-592-2100.

- Park pull-offs and spurs are closed from 9:00 PM to 6:00 AM.
- The Illinois Valley Visitor Center parking lot and grounds are closed 9:00 PM until 7:00 AM.
- Areas above the lower parking lot at the end of Highway 46 which accesses the road and parking areas at the monument Visitor Center and Chateau are closed to vehicle traffic during the same hours the Visitor Center is closed.

Determination: This is necessary to prevent unauthorized camping in areas not designated for camping, group gatherings in undeveloped areas, sanitation problems, vandalism and theft of natural resources.

Public Use Limits:

- With the exception of regular trips into Oregon Caves under the guidance or supervision of National Park Service employees or contractors, or Blind Leads Cave no person shall enter any cave or undeveloped part or passage of any cave without a permit.
- The Superintendent may issue written permits or cooperative agreements for cave entry without escort to persons engaged in scientific or educational investigations under guidelines specified in the Resource Management Plan.
- In order to enter the cave on a regular public tour, children under the age of 12 years must be at least 42 inches in height. Special accommodation will be made for those who cannot meet this requirement due to a genetic or other physiologic factor that limits physical growth.

Determination: Moderately strenuous cave tour routes have many stairs with large openings, high hand rails, and steep drop offs. Children must be able to navigate the cave safely without assistance. Children cannot be carried safely through the cave due to narrow passage, low ceilings, and steep stairways.

- Motor vehicle use of the road that goes through the monument and preserve known as NPS 960 is prohibited from November 1 to May 1 without a permit.

Determination: The Superintendent has determined that the spread of Port Orford Cedar Disease (POCD) is a threat to the Old Growth trees in the Monument and that every effort should be made to prevent or slow its spread to the Monument's Old Growth Forest. POCD is spread from infected sites, to uninfected sites by vehicle traffic, particularly during muddy and wet conditions. These environmental conditions largely exist from approximately October to May. POCD is found in many areas in the Oregon Caves Preserve and surrounding Wild Rivers District of the Rogue River-Siskiyou National Forest.

- Other Power Driven Mobility Devices (OPDMD) use by Mobility Impaired Persons.
 - Other Power Driven Mobility Devices (OPDMD) such as the Segway ® PT, and similar devices are authorized for use by persons with mobility disabilities as defined in § 35.104 of Title II of the Americans with Disabilities Act. Use is only allowed under the following conditions:
 - Types of OPDMD: Any OPDMD operated in Oregon Caves National Monument and Preserve under this rule shall meet the following standards:
 - Size: OPDMD shall not be wider than 36" or longer than 48".
 - Weight: The overall weight of the device and users(s) shall not exceed 550 lbs.
 - Speed: OPDMD shall not be operated at speeds in excess of 5 miles per hour.
 - Noise: OPDMD shall not produce noise levels in excess of 70 decibels.
 - Emissions: OPDMD shall not exceed zero emissions during use.
 - Areas of Authorized Use: OPDMD which meet the above criteria are allowed in the following locations within Oregon Caves National Monument and Preserve:
 - Exterior routes of travel designed for pedestrian use within developed public use areas.
 - Trails and pathways specifically designed and constructed to ADA standards.
(Note: There are currently no trails that meet or exceed ADA standards within the Monument and Preserve).
 - Park roads, parking areas, and trails where bicycle use is authorized.

Determination: The use of OPDMD's at indoor facilities and on non-ADA standard trails would present a hazard to other pedestrian traffic due to limited space and maneuverability. Uses of OPDMD's in other areas of the park are more in line with revisions to the Americans with Disabilities Act (ADA) published September 15, 2010. Although these new regulations do not directly apply to federal lands, facilities, or programs, the DOI, Office of the Solicitor, and the Director have concluded that allowing the use of OPDMD's is compelled by Section 504 of the Rehabilitation Act of 1973 and the DOI regulations at 43 CFR Part 17, Subpart E.

- Leaving property unattended for longer than 24 hours requires a permit.

Determination: Leaving unknown property unattended in the park area threatens public safety, the environmental and scenic values of the park, the natural and cultural resources of the park, and the orderly management of the park. Visitors seeking to leave property unattended within the park must obtain a permit from the Superintendent. (Note: This limitation does not apply to registered visitors in the Caves Creek Campground or Chateau. See section 2.22 below).

- Vehicles and/or trailers with a combined total length that exceeds 45 feet are prohibited on the access road and within the Cave Creek Campground without a Special Use Permit (SUP).

Determination: The Superintendent has determined that vehicles longer than 45 feet cannot safely negotiate the roads within the Cave Creek campground. Narrow roadways and sharp turns present a hazard to other visitors and their property. Vehicles that leave the road surface can damage natural resources and destroy park property.

Closures:

- With the exception of guided tours, all caves excepting the Blind Leads adjacent to the 110 Exit within the boundary of Oregon Caves National Monument and Preserve are closed to the public.

Determination: The Superintendent has determined that White Nose Syndrome is a threat to the cave bats of Oregon Caves National Monument and Preserve, and every effort should be made to prevent or slow its spread to the park. The Superintendent has determined the closure is the best available method to meet the National Park Service mission to conserve the wildlife in the parks for the enjoyment of future generations.

- During periods of High winds, ice, snow, or other conditions resulting in hazardous motor vehicle travel, the Superintendent may close all or a portion of the Oregon Caves National Monument and Preserve road system to motor vehicle use.

Determination: Closures would be deemed necessary for employee and visitor safety during hazardous road conditions.

- During periods of high winds or periods of heavy ice, snow or other hazardous conditions, the Superintendent may close trails including the cave exit and the "110 exit" trails.

Determination: Closures would be deemed necessary for employee and visitor safety during hazardous trail conditions.

- Except in those areas listed in Section 2.22(a)(2)(i) of this Compendium, overnight parking on a roadway or parking area in Oregon Caves National Monument and Preserve is prohibited.

Determination: Prohibiting overnight parking is necessary to prevent unauthorized camping in and around the parking lots themselves or in nearby areas not designated for camping. Unauthorized overnight use of these areas results in sanitation problems, resource damage, illegal campfires, and user conflicts. Developed campgrounds are available at Cave Creek, Grayback, and other locations in nearby communities.

- The following administrative areas are open to authorized persons only:
 - The park residences, offices and administrative areas located in the Chalet.
 - The water treatment facility located adjacent to the Chalet.
 - The waste-water collection facility located adjacent to the fire cache garage.
 - The Guide Shack located adjacent to the Chalet.
 - The telecommunications facility located at NPS960.
 - The equipment storage shed located within the Caves Creek Campground.
 - The NPS housing area at Mile 18 of OR46.
 - The NPS maintenance area at Mile 18 of OR46.
 - The Headquarters water intake and water line and associated structures.
 - The Resource Management Offices known as the Ranger Cabin

Determination: These areas serve the administrative needs of the park and contain no cultural or natural resources critical to visitor use and enjoyment of the park. The closure helps prevent unlawful activity, safeguards visitor health and safety, and better protects park resources at those locations.

- Launching, landing, or operating an unmanned aircraft from or on lands and waters administered by the National Park Service within the boundaries of Oregon Caves National Monument and Preserve is prohibited except as approved in writing by the Superintendent.

Definition: The term “Unmanned aircraft” means a device that is used or intended to be used for flight in the air without the possibility of direct human intervention from within or on the device, and the associated operational elements and components that are required for the pilot or system operator in command to operate or control the device (such as cameras, sensors, communication links). This term includes all types of devices that meet this definition (e.g., model airplanes, quad-copters, drones) that are used for any purpose, including for recreation or commerce.

Determination: Unmanned aircraft pose a danger to public health and safety, when those aircraft crash, a fire is a likely occurrence (as evidenced at Redwood National and State Parks in 2014). The monument and preserve’s location within an old growth mono-forest makes the area particularly susceptible to the ravages of fire. Additionally, the steep and rugged terrain seriously hampers efforts to control wildfires. The cultural resource of the Chalet and Chateau at Oregon Caves is an irreplaceable National Resource. Oregon Caves is a haven for Townsend’s Big Eared bat, a state listed sensitive species, along with other species of bats. Our protection mission requires that the NPS prevent significant levels of human-caused disturbances. Unmanned aircraft on the monument and preserve would disturb bat flight into and out of the cave and may interfere with their ability to find food through echolocation. Integral to the Oregon Caves National Monument and Preserve experience is the natural soundscape, highlighted by the sounds of running water, trees rustling and birds singing. The sounds of drone flying will significantly alter and thus impair visitor’s enjoyment of the natural soundscape.

- Swimming and wading within areas above Cave Creek Campground of Oregon Caves National Monument and Preserve is prohibited.

Determination: The Superintendent has determined that Port Orford Cedar Disease (POCD) is a threat to other species within the Monument and Preserve. Swimming and or wading in the creeks, rivers and ponds allows mud from outdoor gear and or shoes to carry the spores of POCD from infected areas to uninfected areas. In addition, swimming or wading impairs the ability of the cave ecosystems to sustain themselves by introducing human pathogens, and fundamentally altering the ecosystems. See also section §3.16

- **The following areas are closed to hunting (see attached map):**
 - All areas of the 460-acre National Monument
 - On the Preserve, within a ¼ mile of the park administrative area to include maintenance, headquarters and housing.
 - On the preserve, within a ¼ mile of the Cave Creek Campground
 - On the preserve, the area from Highway 46 and USFS 960 extending south to the monument boundary until past the Panther creek drainage.
 - On the Preserve, all area east of the No Name Creek Drainage to the monument boundary.

Determination: This is necessary to protect park visitors within the National Preserve who may be unaware of hunting activities. Closing these areas to the discharge of firearms, even during hunting seasons, does not affect a person’s ability to otherwise conduct successful hunting activities elsewhere in the Preserve area.

- Trapping is prohibited in all areas of Oregon Caves National Monument and Preserve.

Determination: The Enabling Legislation for the Oregon Caves National Monument and Preserve allows for hunting in the National Preserve Areas, but trapping was not specifically mandated by Federal statutory law and is prohibited by 36 CFR 2.2(b)(3).

- **The following areas are closed to the operation of All Terrain Vehicles (ATVs) or Off-Highway Vehicles (OHVs):**

- The operation of off-road motor vehicles, also known as All-Terrain Vehicles (ATV's) or Off-Highway Vehicles (OHVs), is prohibited within Oregon Caves National Monument and Preserve, including on or along paved and gravel roadways. This prohibition also applies to vehicles that meet the definition of off-road motor vehicles that are licensed for on-road or highway use by a state government. "Off-road motor vehicle" is defined by Executive Order Number 11644 (37 Federal Register 2887.)
- Off-road motor vehicles may be allowed for administrative purposes, such as fire control, search and rescue, law enforcement, resource management activities, and maintenance when approved by the Superintendent.
- See section 36 CFR § 4.10 within this compendium for additional information.

Determination: The Superintendent has determined that the use of off-road motor vehicles within the park is inconsistent with the mission of the park and other visitor pursuits and is further prohibited to protect the fragile resources of the park and ensure visitor safety.

(a)(2) The following areas have been designated for a specific use or activity, under the conditions and/or restrictions as noted:

Camping:

- There are no designated areas for camping in the Monument.
- Refer to §2.10 for detailed camping area designations within the Preserve.

Areas Closed to Picnicking:

- Concession buildings except where facilities are provided.
- Visitor centers and other public use buildings.
- Within Cave Creek Campground other than the day use area or a site that is reserved and paid for by a visitor.

Determination: Picnicking in concessions buildings would be in conflict with the designated use of the concessions buildings. Due to limited space and maneuverability picnicking in public use buildings would present a hazard to other pedestrian traffic and be in conflict with the purposes of those areas.

- Public motor vehicle use on signed and/or gated park roads is prohibited without a permit.

Determination: The Park contains miles of former logging roads, U.S. Forest Service roads, and skid trails that were used prior to park acquisition. Many of these roads have received little or no maintenance and are in poor condition. The Superintendent has determined that motor vehicle use would present a hazard to vehicle operators and potentially damage other park resources. In addition, the use of motor vehicles on these routes would conflict with other pedestrian and bicycle users. Park Roads are 4614, 4613, 960, 070 and 031. All other roads and skid trails are closed to public motor vehicle use.

- Hiking and pedestrian use
 - All areas within the Preserve are open to hiking and pedestrian use.
- Passenger carrying busses
 - Engines must be shut down when not underway.

Determination: The idling of bus engines adds unnecessary exhaust fumes to the air and diminishes the enjoyment by visitors of the peace and tranquility of the park.

- Firewood
 - No person shall transport, by any means, untreated firewood into the Park, for sale or use within the Park, from any location outside of the Pacific Northwest.
 - The park adopts Oregon state law as applicable in the park. See ORS 570.720 for further information on state firewood regulations.
 - "Pacific Northwest" means the states of Oregon, Washington, and Idaho.

- “Untreated Firewood” means any firewood that has not been heat treated to a minimum wood core temperature of 60oC (140oF) for at least 60 minutes or equivalent treatment as approved by the Oregon Department of Agriculture (ODA). Air drying of firewood is insufficient and is not approved by ODA. Post treatment firewood must be stored in a manner to minimize re-infestation.
- Firewood purchased for use in the park or sold within the park must be labeled as “Approved Pacific Northwest Firewood” for all firewood from sources wholly within the Pacific Northwest or “Approved Pest Free” for all treated firewood meeting the ODA treatment standard whether harvested from the Pacific Northwest or elsewhere.
- For further information on firewood restrictions, preventing the spread of invasive forest pests, and the “Buy It Where You Burn It” Campaign, go to the “Oregon Invasive Species Council” website or the National “Don’t Move Firewood” website.

Determination: This restriction is established to protect the Park from the introduction of invasive species, including non-native wood-boring insects and plant diseases, transported on firewood from both inside and outside the Pacific Northwest.

Cave use and activities:

- The following restrictions and/or conditions are in effect for the specific uses or activities while occupying any cave within the Oregon Caves National Monument and Preserve:
- Service animals are welcome at the Monument & Preserve in many areas where pets are prohibited, including the Visitor Center, the Château, and the Cave Tour Trail. Service animals, as defined by the ADA, are not pets and are allowed on the Cave Trail. However, they are not allowed on off trail tours of the cave due to the proximity of safety hazards including steep drop offs, tight squeezes, and rock scrambles. Service dogs must be harnessed, tethered, or leashed unless this interferes with the service animal’s work, or the individual’s disability prevents them from using these devices. In those cases, the individual must maintain control of the animal through voice, signal, or some other means. Therapy or emotional support animals are not considered service animals and are not permitted in areas normally prohibited for pets.
- Consumption of any food products, including gum, smokeless tobacco products, and all beverages are prohibited within any cave.

Determination: Introducing foreign substances within the cave environment can adversely affect endemic cave species, and alter cave formations and ecosystems. In addition, gum and food scraps can be extremely difficult and costly to clean and remove.

- The use of a cane, staff or other walking assistance device on a tour must have a rubber tip to prevent damage to cave resources and be approved by the Superintendent or designee.

Determination: The hardened steel tips of hiking staffs present a danger to the soft marble features of the cave. In addition, the use of canes and sticks within the tight and limited spaces of the cave present a tripping and safety hazard to other visitors and are not useable in areas of low ceilings.

- Tripods, monopods, or other camera mounting devices are not permitted on the public cave tour but may be approved as an element of a Special Use Permit.

Determination: Due to the irregular low ceilings, and steep, open or spiral staircases, the use of tripods or camera holding devices within the tight and limited spaces of the cave present a tripping and safety hazard to other visitors.

Filming, still photography, and audio recording activity may require a permit, consistent with 54 U.S.C. 100905:

- Filming, still photography, and audio recording activity that occurs in closed areas, requires exclusive use of a site or area, or involves a set or staging equipment other than handheld equipment (such as a tripod, monopod, and handheld lighting equipment) requires a permit, unless the activity is affiliated with an activity or event that has been allowed under a written authorization, such as a special use permit.
- Filming, still photography, and audio recording that involves more than eight individuals requires a permit, unless the NPS has specifically notified an individual or group that a permit is not required, or if the activity is

affiliated with an activity or event that has been allowed under a written authorization, such as a special use permit.

- If a permit is required for the reasons stated above, or if the NPS otherwise determines and then notifies an individual or group that a permit is required for a filming, still photography, or audio recording activity, then engaging in that activity without a permit is prohibited. Violating a term or condition of a permit issued by the NPS for a filming, still photography, or audio recording activity is prohibited, and may result in the suspension or revocation of the permit, in addition to any penalties that may apply under 36 CFR 1.3

Determination: Federal law at 54 U.S.C. 100905 states that permits and fees are not required for filming, still photography, or audio recording in park areas if certain requirements are met. These requirements address various topics, including, but not limited to, group size, location, equipment, potential impacts to resources and visitors, and the likelihood that the NPS will incur related administrative costs. If any of these requirements are not met, the law allows the Secretary of the Interior, acting through the NPS, to require a permit for the subject activity. Permit requirements are imposed by the superintendent under discretionary authority provided by 36 CFR 1.5(a)(2), which allows the superintendent to impose conditions or restrictions on a use or activity, consistent with applicable legislation, to implement management responsibilities. The general regulations for permits in 36 CFR 1.6 do not apply to permits issued for filming, still photography, and audio recording, which instead are governed by the statutory provisions in 54 U.S.C. 100905. The imposition of permit requirements, on a case-by-case basis, for filming, still photography, or audio recording does not require rulemaking under 36 CFR 1.5(b). Requiring a permit with reasonable terms and conditions in accordance with statutory requirements at 54 U.S.C. 100905 is not highly controversial, will not result in a significant alteration in the public use pattern of the System unit, will not adversely affect the System unit's natural, aesthetic, scenic or cultural values, or require a long-term or significant modification in the resource management objectives of the System unit, because the permit requirement is limited in time and scope to the specific activities authorized by the permit, which contain terms and conditions that protect the values, resources, and visitors of the System unit, and implements federal law.

(a)(3) The following restrictions, limits, closures, designations, conditions, or visiting hour restrictions imposed under §§(a)(1) or (2) have been terminated:

- NONE

II. PERMITS

36 CFR §1.6 – ACTIVITIES THAT REQUIRE A PERMIT

(f) The following is a compilation of those activities for which a permit from the Superintendent is required. All permits must be obtained at Park Headquarters during business hours or via mail addressed to Administrative Assistant, Oregon Caves National Monument and Preserve, 19000 Caves Highway, Caves Junction, OR 97523.

- §1.5(a)(2) Some filming, still photography, and audio recording (depends upon the facts and circumstances; contact the park for more information). 36 CFR 1.5(a)(2) and 54 U.S.C. 100905.
- §1.5(d) The following activities related to Public Use Limits:
 - Cave entry to all persons not under the guidance or supervision of National Park Service employee or contractor.
 - Cave entry without escort to persons engaged in scientific or educational investigations.
 - Cave entry without escort to persons not covered under a cooperative agreement.
 - Vehicle Use of Signed and/or Gated Park Roads.
 - The operation of vehicles and/or trailers with a combined total length that exceeds 45 feet within the Caves Creek Campground.
 - Motor Vehicle use of signed and/or gated park roads.
 - (See also §4.11 – Vehicle load, weight, and size limits).
- §2.5(a) Specimen collection (taking of plants, fish, wildlife, rocks or minerals).

- §2.10(a) The following camping activities:
 - Refer to section 2.10 for conditions related to camping.
- §2.12 Audio Disturbances:
 - (a)(3) Operation of any type of portable motor or engine, or device powered by a portable motor or engine in non-developed areas.
 - (a)(4) Operation of a public address system in connection with a public gathering or special event for which a permit has been issued pursuant to §2.50 or §2.51.
- §2.17 Aircraft & Air Delivery
 - No permits are issued for the delivery or retrieval of persons or objects by parachute, helicopter, or other airborne means, including Unmanned Aircraft Systems (UAS), or “drones”.
 - (c)(1) Removal of a downed aircraft.
- §2.22 Property unattended longer than 24 hours.
- §2.37 Soliciting or demanding gifts, money goods or services (pursuant to the terms and conditions of a permit issued under §2.50, §2.51 or §2.52).
- §2.38(a) Using, possessing, storing, or transporting explosives, blasting agents or explosive materials.
- §2.38(b) Using or possessing fireworks and firecrackers.
- §2.50(a) Conduct a sports event, pageant, regatta, public spectator attraction, entertainment, ceremony and similar events.
- §2.51(a) Public assemblies, meetings, gatherings, demonstrations, parades and other public expressions of views.
 - Groups of 25 persons or less may conduct these activities in designated areas without a permit. See attached map.
- §2.52(c) Sale or distribution of printed matter that is not solely commercial advertising.
 - Groups of 25 persons or less may conduct these activities in designated areas without a permit. See attached map.
- §2.60(b) Livestock use except for designated trails on the preserve.
- §2.61(a) Residing on federal lands.
- §2.62(b) Memorialization
 - Scattering ashes from human cremation.
- §3.3 Use of a vessel.
- §3.19 Use of a submersible.
- §4.11(a) Exceeding of established vehicle load, weight and size limits.
- §5.1 Advertisements (Display, posting or distribution).
- §5.3 Engaging in or soliciting any business (requires a permit, contract or other written agreement with the United States, or must be pursuant to special regulations).
- §5.5 Commercial Photography/Filming:
 - (a) Commercial filming of motion pictures or television involving the use of professional casts, settings or crews, other than bona fide newsreel or news television.

- (b) Still photography of vehicles, or other articles of commerce or models for the purpose of commercial advertising.
- §5.6(b) Use of commercial vehicles on park area roads during an emergency.
- §5.7 Construction of buildings, facilities, trails, roads, boat docks, path, structure, etc.
- §6.(a) Operation of a solid waste disposal site.

III. GENERAL REGULATIONS

NOTE: Each of the following underlined sections include language (in the CFR) that authorizes the Superintendent to designate areas or sites for certain activities or uses; set terms and/or conditions for activities or uses; require a permit; set procedures, or a combination, thereof. Since the authority to exercise discretion is built-in, a written determination in each case is not required, except when specifically required such as in §2.1(c)(1), (gathering of berries, etc., for personal use).

36 CFR §2.1 – PRESERVATION OF NATURAL, CULTURAL AND ARCHEOLOGICAL RESOURCES

(a)(4) Using or possessing wood gathered from within the Monument and Preserve area:

- All areas of the Oregon Caves National Monument and Preserve are closed to the collection of live, dead and or downed wood.

(a)(4) Dead wood on the ground may be collected for use as fuel for campfires within the Preserve in the following locations:

- Within 100 yards of the Cave Creek Campground.
- Up to 50 pounds (the amount an average adult can carry in one armload) of dead and down wood per day per campsite may be collected by hand, without the use of mechanical means, for use exclusively as firewood within designated park campgrounds and/or backcountry campsites.

(a)(5) The following conditions are in effect for walking, climbing, entering, ascending or traversing the listed archeological or cultural resources, monuments or statues:

- Walking, climbing, entering, ascending or traversing the listed archeological or cultural resource, monuments or statues is prohibited.

(b) Hiking or pedestrian traffic is restricted to the trail tread or walkway on the following trails/walkways:

- Within the cave, visitor traffic is restricted to the paved tour route of the basic public tour and on non-paved trails where there has been a finding of no significant impact in past decision documents.
- No area restrictions designated within the Preserve. Hiking and pedestrian use is permitted throughout the Preserve.

(c)(1), (c)(2) The following fruits, nuts, berries or unoccupied seashells may be gathered by hand for personal use or consumption, in accordance with the noted size, quantity, collection sites and/or use or consumption restrictions:

- All species of berries (one quart per person per day) and apples (five apples per person per day).
- Tanoak acorns (one quart per person per day).
- Edible Fungi (one quart per day) no mechanical means are allowed, disturbing the duff layer or soil is not allowed only the fruiting body may be harvested with care being taken to not damage the fungus' mycelium

Determination: Because of the abundance of the listed berries, fruits, nuts and fungi in and around the park and the limited pressure from persons collecting these items, there is currently little risk that limited personal collection will adversely affect the long-term integrity of these resources. If significant changes in visitor use patterns or measurable adverse effects to park resources are detected, these limits may be revised or the authorization to

gather a particular item eliminated entirely.

36 CFR §2.2 - WILDLIFE PROTECTION

(d) The transporting of lawfully taken wildlife through the Monument and Preserve is permitted under the following conditions and procedures:

- Lawfully taken and tagged wildlife may be transported through the Monument on State maintained roadways. All other roads within the Monument are closed to transportation of lawfully taken wildlife unless approved by a law enforcement park ranger on a case-by-case basis.
- An animal, lawfully shot on Preserve lands, that runs into the Monument may be retrieved if the animal is dead or mortally wounded following notification and investigation by a park ranger. If the injured animal rises and moves away upon being approached by a law enforcement ranger, the animal will be considered healthy enough to survive and further pursuit will be prohibited. Law enforcement rangers may euthanize a severely injured animal and allow the properly licensed hunter to tag and claim the animal. No engine-driven mechanical equipment such as a winch, hoist, all-terrain vehicle, etc. may be used to retrieve the animal.
- Lawfully taken and tagged wildlife may be transported through the Preserve on State maintained roadways and Park roadways designated for motor vehicle use.

(e) The following areas are closed to the viewing of wildlife with the use of an artificial light:

- The entire Monument and Preserve surface is closed to the viewing of wildlife through the use of personal artificial light sources. Within the Cave proper and near permanent light sources around the developed area, viewing of wildlife by artificial light is allowed.

36 CFR §2.3 – FISHING

- Oregon State Regulations close fishing in all tributaries of the Illinois River Basin. All bodies of water within the monument and preserve are tributaries of the Illinois River Basin.

36 CFR §2.4 – WEAPONS, TRAPS, AND NETS

(a)(2)(i) With the exception of firearms, weapons, traps or nets may only be carried, possessed or used at the following designated times and locations:

- In areas open to hunting, during a legal hunt period, and in accordance with Oregon state law and the Oregon Caves National Monument and Preserve Superintendent's Compendium. For additional information see Oregon state hunting regulations.

Notwithstanding any other provision in this Chapter, a person may possess, carry, and transport concealed, loaded, and operable firearms within a national park area in accordance with the laws of the state in which the national park area, or that portion thereof, is located, except as otherwise prohibited by applicable Federal law.

36 CFR §2.10 – CAMPING AND FOOD STORAGE

(a) The sites and areas listed below have been designated for camping activities as noted. A permit system has been established for certain campgrounds or camping activities, and conditions for camping and camping activities are in effect as noted:

- Camping is prohibited in any form throughout the Monument and Preserve including the Illinois Valley Visitor Center and surrounding grounds. The prohibition on camping includes occupying a vehicle within the Monument or Preserve for a period of more than two hours between the hours of 9:00 p.m. and 6:00 a.m.

Cave Creek Campground

- ✓ First come first serve.
- ✓ Permit is required.
- ✓ Stay limit of 14 days with no more than 30 combined days in a year.

- ✓ Campers must stay within footprint of established sites.

Mount Elijah backcountry camp

- ✓ First come first serve.
- ✓ Stay limit of 9 days with no more than 30 combined days in a year.
- ✓ No more than 8 people may occupy this site.

(b) (3) Camping within 25 feet of a water hydrant or main road, or within 100 feet of a flowing stream, river or body of water is prohibited, except as designated below:

Cave Creek campground

- ✓ Designated sites that are less than 100 feet from the adjacent to the stream.

36 CFR §2.11 – PICNICKING

- Picnicking is allowed in all areas of the Monument and Preserve under the following conditions:
 - No food scraps of any kind will be left behind. Picnickers must pick up all food and food scraps, or other trash.
 - Dishes, utensils, or other food preparation items are not allowed to be washed on site or immersed in stream or other water sources.
 - Picnickers will not feed wildlife, or allow wildlife to receive any food scrap or food reward.

Determination: Food scraps, crumbs, dishwashing water can present food rewards to wildlife which results in unacceptable negative effects to wildlife.

Areas Closed to Picnicking:

- Concession buildings except where facilities are provided.
- Visitor centers and other public use buildings.
- Within Cave Creek Campground other than the day use area or a site that is reserved and paid for by a visitor.

Determination: Picnicking in concessions buildings would be in conflict with the designated use of the concessions buildings. Due to limited space and maneuverability picnicking in public use buildings would present a hazard to other pedestrian traffic and be in conflict with the purposes of those areas.

36 CFR 2.13 – FIRES

(a)(1) The lighting or maintaining of fires is generally prohibited, except as provided for in the following designated areas or receptacles, and under the conditions noted:

- Open fires are prohibited throughout the Monument and Preserve.
- All fires are prohibited during periods of very high or extreme fire danger as posted according to the park's Fire Management Plan. Management decisions for fire restrictions will be based on Oregon Department of Forestry Public Fire Restrictions found at [ODF Fire Restrictions or local Forest Service regulations](#).
- Campfires are permitted in park-provided grills/rings or designated sites in all campgrounds and backcountry campsites.
- Moving a grill or fire ring from its original location is prohibited.
- Where grills/rings are provided, all burning material must be fully contained within the grill/ring.
- The burning of trash or food waste is prohibited within the park.
- A fire may be ignited and maintained only by using fuel sources designed and commonly used for warmth or the preparation of food, such as charcoal briquettes or natural firewood. Lighting or maintaining a fire with other materials including, but not limited to, flammable liquids, garbage, fireworks, plastics, aerosol canisters, batteries, or other manufactured or synthetic materials, is prohibited.

This action is necessary for the maintenance of public health and safety, protection of environmental or scenic values, protection of natural or cultural resources, and the implementation of management responsibilities. Materials other than approved combustibles – especially fire accelerants and substances prone to wind transport or explosion – creates serious risks when used to light or maintain fires. These combustibles can ignite or spread wildfires that directly threaten people and valuable resources and assets. The burning of manufactured or synthetic materials can contribute to air pollution, contaminate soil and water, and be toxic to humans and the environment. Less restrictive measures, such as an education campaign informing visitors of the risks of using certain materials to light or maintain a fire, would not be

commensurate with the substantial risks associated with those activities and could lead to adverse outcomes that might be prevented by establishing an enforceable condition.

(a)(2) The following restrictions are in effect for the use of stoves or lanterns:

- Stoves and lanterns may be used in designated picnic areas, campgrounds, and backcountry campsites only. All other areas are prohibited.

(b) Fires must be extinguished according to the following conditions:

- See (a)1; Fires are prohibited throughout the Monument and Preserve.

(c) High fire danger closures will be in effect as noted:

- Smoking on trails is prohibited during periods of extreme fire danger.

36 CFR §2.14 – SANITATION AND REFUSE

(a)(2) The use of government refuse receptacles or facilities for dumping household, commercial or industrial refuse, brought as such from private or municipal property may be allowed under the following conditions:

- No special conditions are established. The use of government refuse receptacles or facilities for dumping household, commercial or industrial refuse, brought as such from private or municipal property is prohibited.

(a)(9) In non-developed areas, the disposal of human body waste within 100 feet of a water source, high water mark of a body of water, or a campsite, or within sight of a trail, except as otherwise designated.

- No sites designated. All human body waste and toilet paper must be containerized and removed.

(b) Conditions for the disposal, containerization, or carryout of human body waste have been established for the following:

- The disposal of any human body waste within any cave area is prohibited. All human body waste must be placed within a leak-proof container and removed immediately.
- No sites designated. All human body waste and toilet paper must be containerized and removed.

Determination: Human body waste can be a significant hazard to other persons, wildlife and the environment. Proper disposal is necessary to prevent the unintentional spread of disease or harmful microorganisms.

36 CFR §2.15 – PETS

(a)(1) The following structures and/or areas are closed to the possession of pets:

(Note: This subparagraph shall not apply to a service dog or service miniature horse [subject to certain limitations] that is individually trained to do work or perform tasks for the benefit of an individual with a disability, including a physical, sensory, psychiatric, intellectual, or other mental disability. Other species of animals, whether wild or domestic, trained or untrained, are not service animals for the purposes of this definition):

- All park buildings that are open to the public.
- All park roads that are closed to public motor vehicle use. Dogs on leash are permitted on administrative roads 057,031 and 066.
- All park trails and undeveloped areas more than 100 feet from public roads and parking areas, except that pets are allowed in the furtherance of hunting as specified in Oregon State Hunting regulation (see §2.15(b) below).
- Pets must be contained and controlled by leash at all times and are allowed only on asphalt roads and parking areas. Leashes may not exceed six feet in length. Pets are prohibited on all trails.
- Park residents may keep pets, as set forth in the ORCA Housing Management Plan 10/2018.

(b) The following conditions are established for the use of dogs which may be used in support of hunting activities:

- All dogs must be fitted with a collar that identifies the owner.
- All dogs must have a valid current state license.

36 CFR §2.16 – HORSES AND PACK ANIMALS

(b) The use of horses or pack animals outside of trails, routes or areas designated for their use:

- No routes or areas have been designated. The use of horses or pack animals within the boundaries of the Oregon Caves National Monument is prohibited. Preserve trails open to equestrian use are the Boundary trail, Limestone Trail, Mt. Elijah Trail and Lake Mountain Trail.

36 CFR §2.17 – AIRCRAFT AND AIR DELIVERY

(a)(1) The following areas have been designated pursuant to special regulations for operating or using aircraft:

- No areas have been designated. The use of aircraft within the boundaries of the Oregon Caves National Monument is prohibited.

(a)(2) The operation or use of aircraft under power on water less than 500 feet from designated swimming beaches, boat docks, piers, or ramps is permitted in the following areas, under the conditions noted:

- No areas have been designated. The use of aircraft within the boundaries of the Oregon Caves National Monument is prohibited.

(c)(1) The removal of a downed aircraft, components, or parts thereof in accordance with the procedures established by the Superintendent:

- Removal procedures will be established in writing as part of a Special Use Permit.

36 CFR §2.19 – WINTER ACTIVITIES

- Skiing, snowshoeing, sledding, inner tubing, tobogganing and similar activities are prohibited on paved Monument roads designated for motor vehicle use, including Monument roads closed due to snow. Road 960 is open for use provided there is enough snow.
- Sledding, inner tubing and tobogganing are prohibited on the Cave Exit Trail and the portion of the Big Tree Trail beginning at the stairs immediately behind the Chalet to the 110-cave exit.

36 CFR §2.20 – SKATING, SKATEBOARDS AND SIMILAR DEVICES

- Prohibited throughout the monument and preserve.

36 CFR §2.21 – SMOKING

- Smoking, including the use of electronic delivery system tobacco products, is prohibited in all government and concession operated buildings.
- Smoking is prohibited in courtyards and within 25 feet of doorways.
- During Fire high and above fire risk designation, smoking anywhere in the park is prohibited except in designated areas or within enclosed motor vehicles or trailers.

Determination: Smoking is prohibited in all government buildings to comply with government-wide health and safety policies. Smoking is prohibited where posted and along trails during high fire danger in order to protect park resources and reduce the risk of fire.

36 CFR §2.22 – PROPERTY

(a)(2) The following describes areas where property may be left unattended for periods longer than 24 hours, and the conditions under which property may be left:

- Registered overnight guests at the Chateau and residents of the Chalet may leave vehicles in the adjacent parking area, or the lower parking area for the duration of their registered stay.
- Registered overnight guests of the Cave Creek Campground may leave vehicles, camper trailers, and other personal property within the boundaries of their camp site for the duration of their registered stay.
- A person using a designated backcountry campground may park their unoccupied motor vehicle overnight at the owner's risk at park trailheads that access a backcountry campground.
- Employees living within the park who reside in the Chalet, other housing areas and conducting back-country operations that require overnight stays.

36 CFR §2.35 –ALCOHOLIC BEVERAGES AND CONTROLLED SUBSTANCES

(a)(3)(i) The following public use areas, portions of public use areas, and/or public facilities within the park are closed to consumption of alcoholic beverages, and/or to the possession of a bottle, can or other receptacle containing an alcoholic beverage that is open, or has been opened, or whose seal has been broken or the contents of which have been partially removed:

- Visitor Center.
- Illinois Valley Visitor Center and surrounding grounds.
- All trails.
- All parking and paved areas in the upper and lower parking lot.

Determination: The Superintendent has determined that the use of alcoholic beverages in these areas would be inconsistent with the purposes for which they were maintained and established. The use of alcoholic beverages present a safety hazard on uneven and narrow trail surfaces, and paved areas experience high volumes of vehicle traffic.

36 CFR §2.37 – NONCOMMERCIAL SOLICITING

Soliciting or demanding gifts, money, goods or services is prohibited except pursuant to the terms and conditions of a permit that has been issued under §2.50, §2.51, or §2.52.

36 CFR §2.38 – EXPLOSIVES

(b) Fireworks and firecrackers may be possessed and/or used in the following areas, under the conditions noted:

- No areas are designated. The use of fireworks and firecrackers is prohibited.

2.51 PUBLIC ASSEMBLIES AND MEETINGS

(b)(1) Demonstrations involving 25 persons or fewer may be held without a permit in the following designated Monument areas within the provisions of §2.51:

- The picnic area in the southeast portion of the main parking area.
- The far west side of the parking lot at the Illinois Valley Visitor Center.
- See attached map.

(c)(1) Designated available Monument areas for demonstrations under this section, and for the sale or distribution of printed matter subject to a permit under §2.51:

- All Monument areas are available for demonstrations and for the sale or distribution of printed matter, provided a permit is issued that meets the criteria listed in 36 CFR §2.51 (c)(1)(i) – (vi).

(c)(2) The Superintendent must designate on a map, which must be available in the office of the Superintendent and by public notice under §1.7 of this chapter, the locations designated as available for demonstrations and the sale or distribution of printed matter:

- See attached map.

2.52 SALE AND DISTRIBUTION OF PRINTED MATTER.

(b)(1) Sale or distribution activity involving 25 persons or fewer may be conducted without a permit (provided it is done free of charge and without asking for payment or a donation) in the following designated Monument areas within the provisions of §2.52:

- The picnic area in the southeast portion of the main parking area.
- The far west side of the parking lot at the Illinois Valley Visitor Center.
- See attached map.

36 CFR §2.60 – LIVESTOCK USE AND AGRICULTURE

(a) Livestock are generally prohibited in any park area. They are only permitted in park areas pursuant to the

exceptions provided for in §2.60(a) and only pursuant to the terms and conditions of a license, permit, or lease.

36 CFR §2.61 – RESIDING ON FEDERAL LAND

(a) Residing in park areas, other than on private land, is prohibited, except pursuant to the terms and conditions of a permit, lease, or contract.

36 CFR §2.62 – MEMORIALIZATION

(b) The scattering of human ashes from cremation is prohibited, except pursuant to the terms and conditions of a permit, or in designated areas according to conditions which may be established by the Superintendent:

- No areas are designated. All scattering of human ashes requires a permit.

36 CFR §3.3 – VESSEL PERMITS

- Permits are required for the use of a vessel within all areas of Oregon Caves National Monument and Preserve.

36 CFR §3.16 – SWIMMING AND WADING

- Swimming and wading within all areas of Oregon Caves National Monument is prohibited above Cave Creek Campground. See section 1.5(f)

36 CFR §4.10 – TRAVEL ON PARK ROADS AND ROUTES

(c)(1) Track-laying motor vehicles, or other motor vehicles equipped with a similar traction device may be operated on the following routes under the terms and conditions noted:

- No routes designated. The use of track-laying motor vehicles within Oregon Caves National Monument and Preserve is prohibited, except as necessary by maintenance staff clearing snow or other debris.

36 CFR §4.11 – VEHICLE LOAD, WEIGHT AND SIZE LIMITS

(a) The following load, weight and size limits, which are more restrictive than State law, apply to the roads indicated under the terms and conditions, and/or under permit as noted:

- Vehicles and/or trailers with a combined total length that exceeds 45 feet are prohibited on the access road and within the Caves Creek Campground without a Special Use Permit (SUP).

Determination: The Superintendent has determined that vehicles longer than 45 feet cannot safely negotiate the roads within the Caves Creek campground. Narrow roadways and sharp turns present a hazard to other visitors and their property. Vehicles that leave the road surface can damage natural resources and destroy park property.

36 CFR §4.21 – SPEED LIMITS

- (b) The speed limit in the Oregon Caves National Monument is 10 mph.
- (c) The speed limit in the Oregon Caves National Preserve is 30 mph.

36 CFR §4.30 – BICYCLES

(b) The Superintendent has authorized bicycle use on the following administrative roads:

- All administrative roads in the Monument and Preserve except for Road 180

Determination: Under new regulation that became effective August 6, 2012, and amended this section of 36 CFR, the superintendent has determined that bicycle use of these roads is consistent with the protection of the park's natural, scenic and aesthetic values, safety considerations and management objectives, and will not disturb wildlife or park resources.

(d)(3) The Superintendent has authorized the following areas where a bicycle may be operated abreast of another bicycle:

- All administrative roads listed in part (b) of this section.
- All paved roads and parking areas.

The following Park roads are closed to bicycle use:

- Administrative Road 180 is closed to bicycle use.

Determination: 36 CFR §4.30(a) states that all park roads are open to bicycle use unless closed to such use by the Superintendent. Road 180 is closed to public use as part of the closure of the Headquarters, Maintenance and Residential area.

E-Bikes

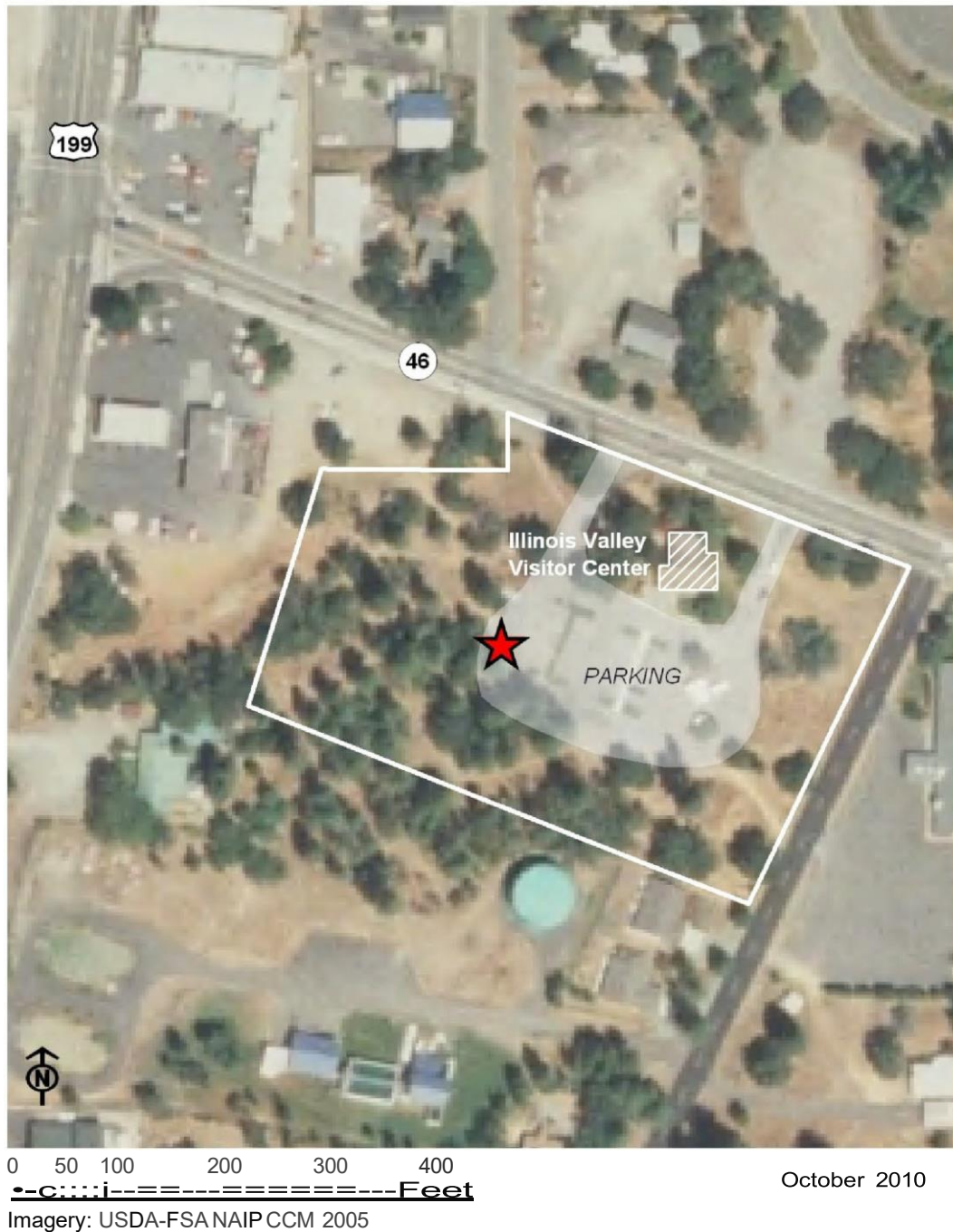
- The term “e-bike” means a two- or three-wheeled cycle with fully operable pedals and an electric motor of less than 750 watts (1 h.p.).
- E-bikes are allowed in Oregon Caves National Monument and Preserve where traditional bicycles are allowed. E-bikes are prohibited where traditional bicycles are prohibited. Except where use of motor vehicles by the public is allowed, using the electric motor to move an e-bike without pedaling is prohibited.
- A person operating an e-bike is subject to the following sections of 36 CFR part 4 that apply to the use of traditional bicycles: sections 4.12, 4.13, 4.20, 4.21, 4.22, 4.23, and 4.30(h)(2)-(5).
- Except as specified in this Compendium, the use of an e-bike within Oregon Caves National Monument and Preserve is governed by State law, which is adopted and made a part of this Compendium. Any violation of State law adopted by this paragraph is prohibited.

36 CFR §4.31 – HITCHHIKING

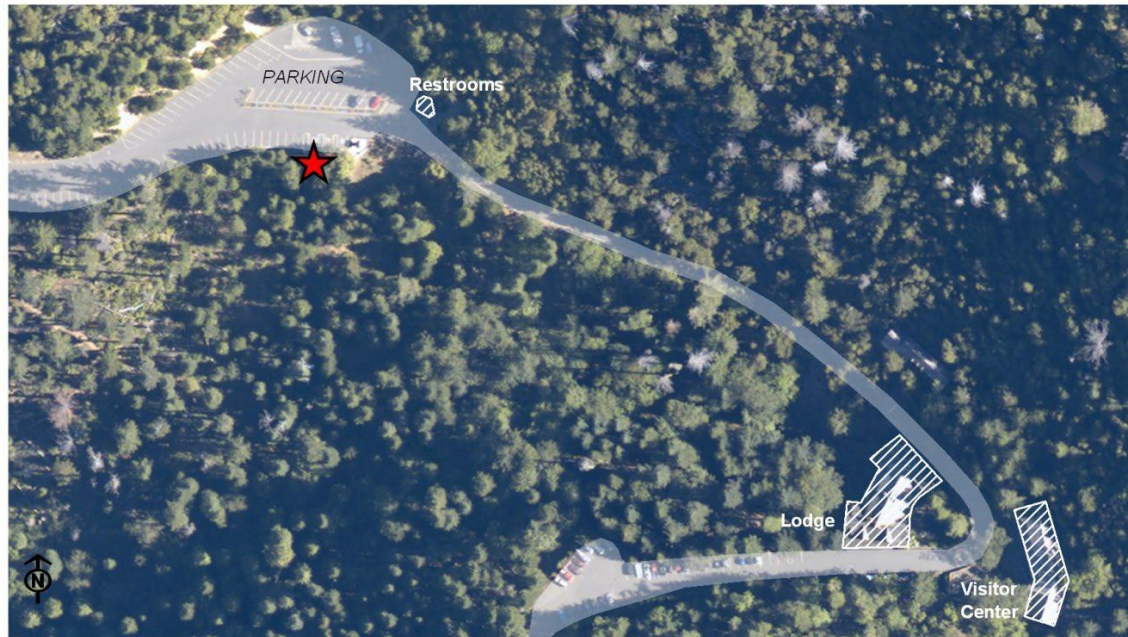
Hitchhiking or soliciting transportation is prohibited except in designated areas and under conditions established by the Superintendent.

- No areas designated. All hitchhiking is prohibited in Oregon Caves National Monument and Preserve.

Public Assembly and Meeting Area Illinois Valley Visitor Center, Cave Junction, OR

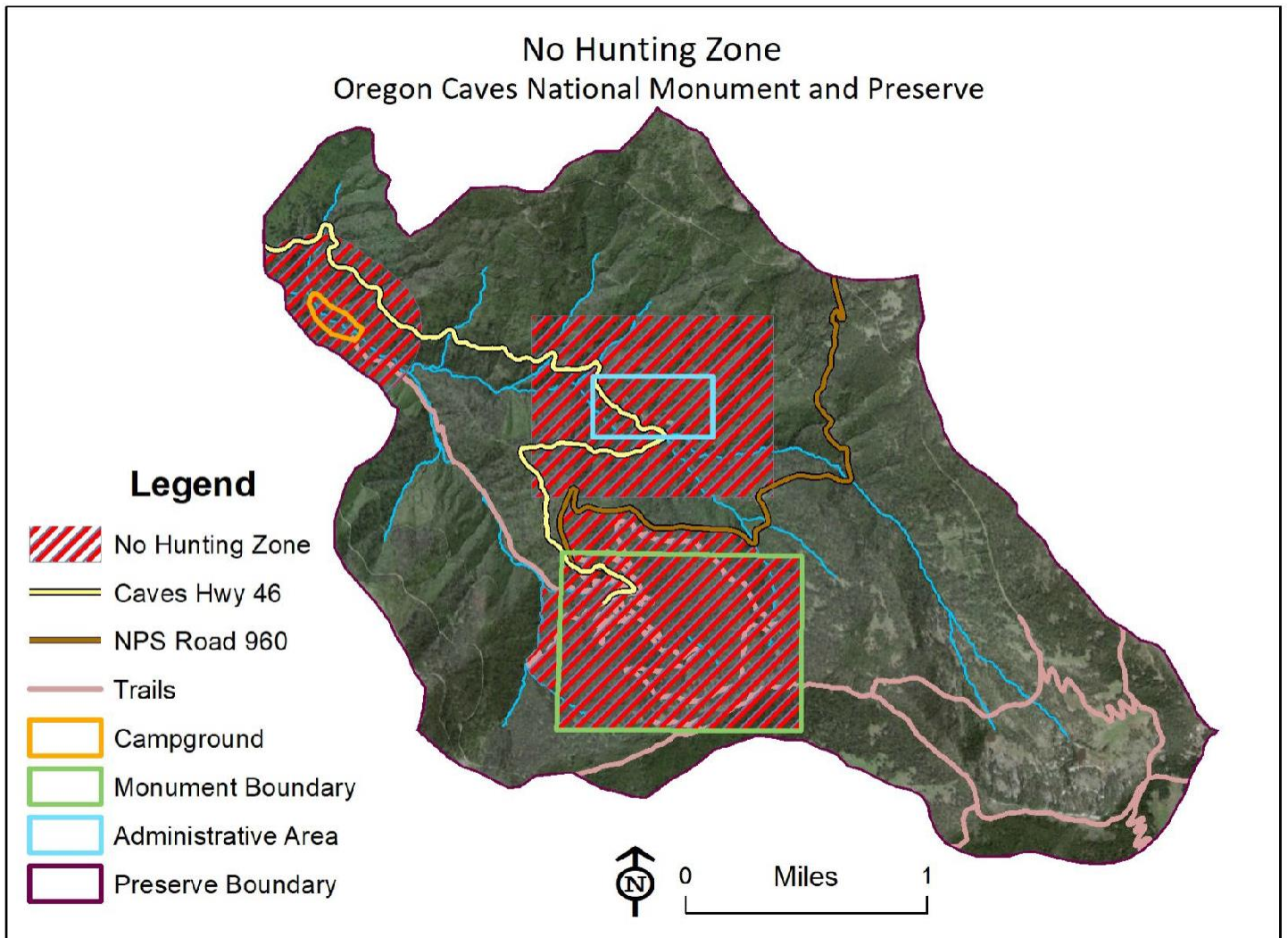


Public Assembly and Meeting Area Picnic Area, Oregon Caves National Monument



0 50 100 200 300 400 Feet
Imagery: NPS-ORCA 2005

October 2010



Oregon Caves National Monument and Preserve CCTV Policy Statement

In accordance with the National Park Service Law Enforcement Reference Manual 9 (RM9), notice is hereby given that Oregon Caves National Monument and Preserve uses Closed Circuit Television (CCTV) security camera monitoring.

This policy does not restrict the official use of CCTV in government administrative areas, including administrative buildings, jail hold facilities (RM9 26.3.7), revenue collection sites, etc. where the government may record/monitor its facilities. For example, the government may perform unrestricted video/audio recording at revenue collection points (entrance stations, visitor center counters, etc.). This policy does not restrict the use of Audio/Visual recording Device (AVRD) in patrol vehicles or officer worn recording devices used by commissioned rangers. (RM9, 26.1)

Operation of CCTV cameras, maintenance of recorded images and use of recorded images will be in accordance with NPS and Department policy and applicable laws and regulations. (RM9, 26.1-26.4). No person will be targeted or monitored merely because of race, religion, gender, sex, disability, national origin, or political affiliation or views. (RM9 26.4.2)

Nothing in this policy statement is intended to create any rights, privileges, or benefits not otherwise recognized by law