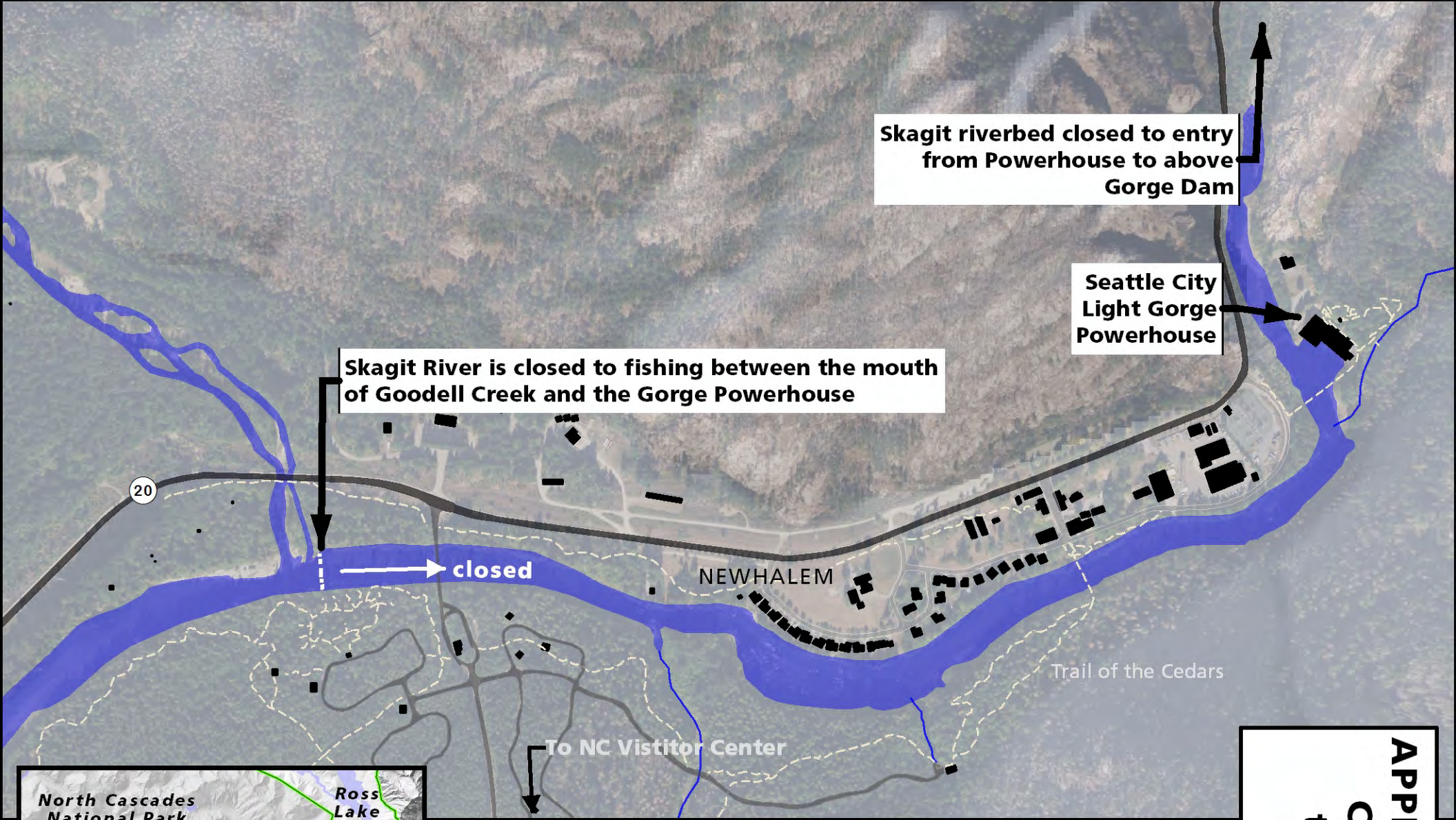


# APPENDIX A. Maps of Closed Areas in Ross Lake National Recreation Area

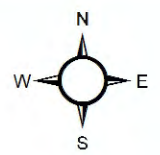
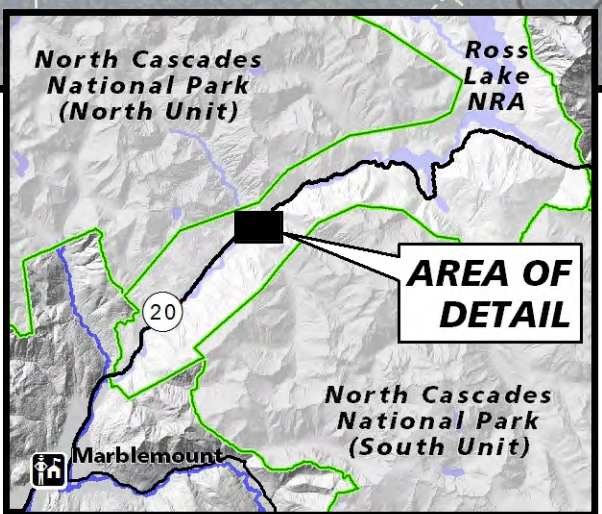


*Looking down Ross Dam – June 2014  
NPS Photo – A. Braaten*

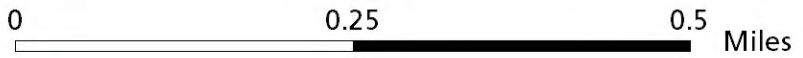




**APPENDIX A.1(a):  
Closed area in  
the vicinity of  
Newhalem**



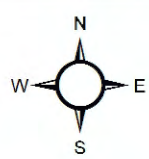
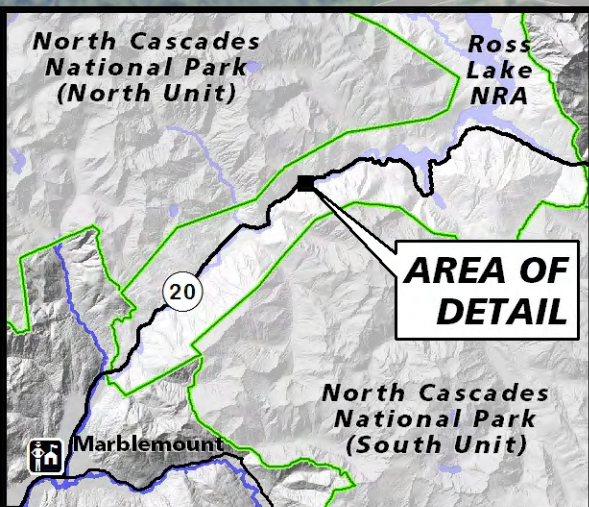
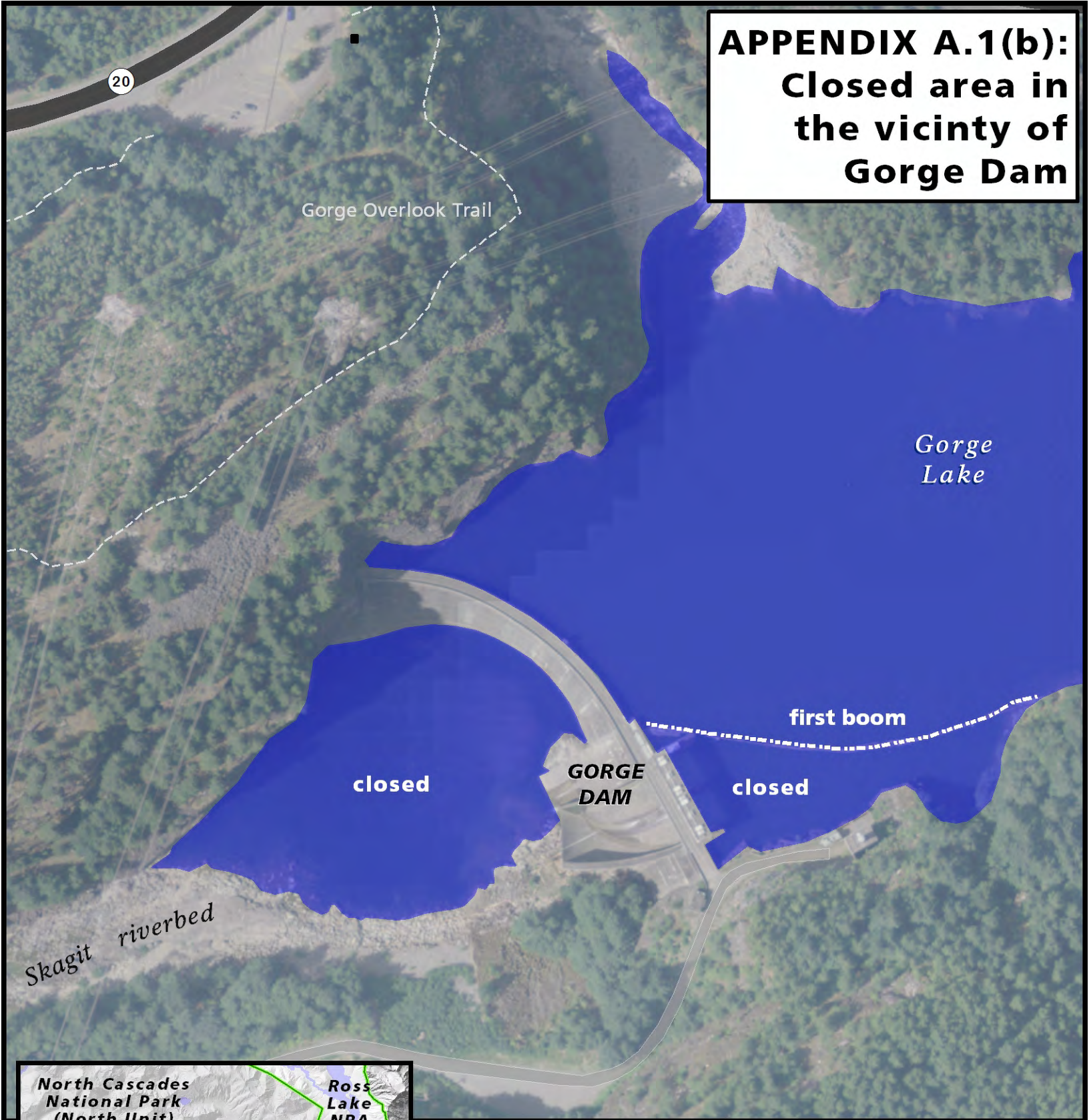
1:9,014



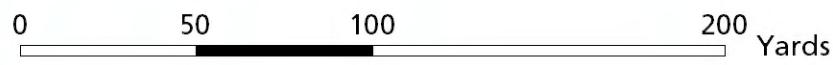
NOCA GIS  
jflab/rangers/compendium/  
appendix\_A-1\_newhalem.mxd  
18 March 2019



**APPENDIX A.1(b):  
Closed area in  
the vicinity of  
Gorge Dam**

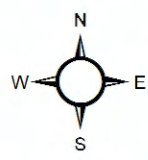
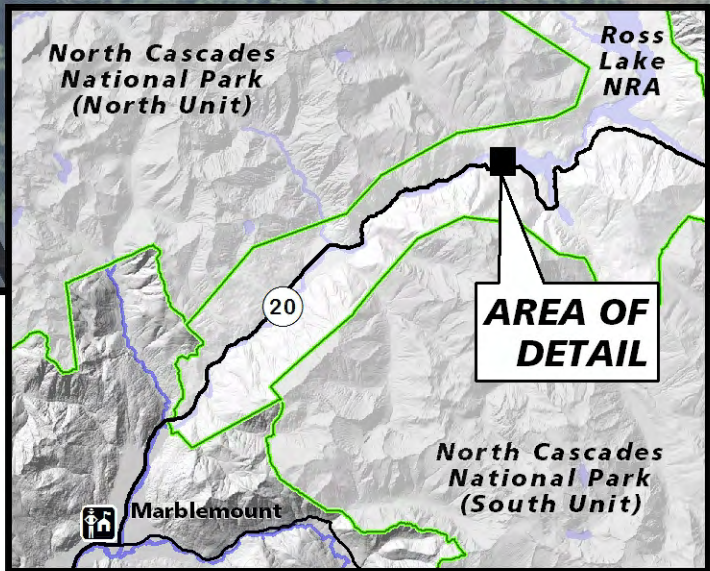
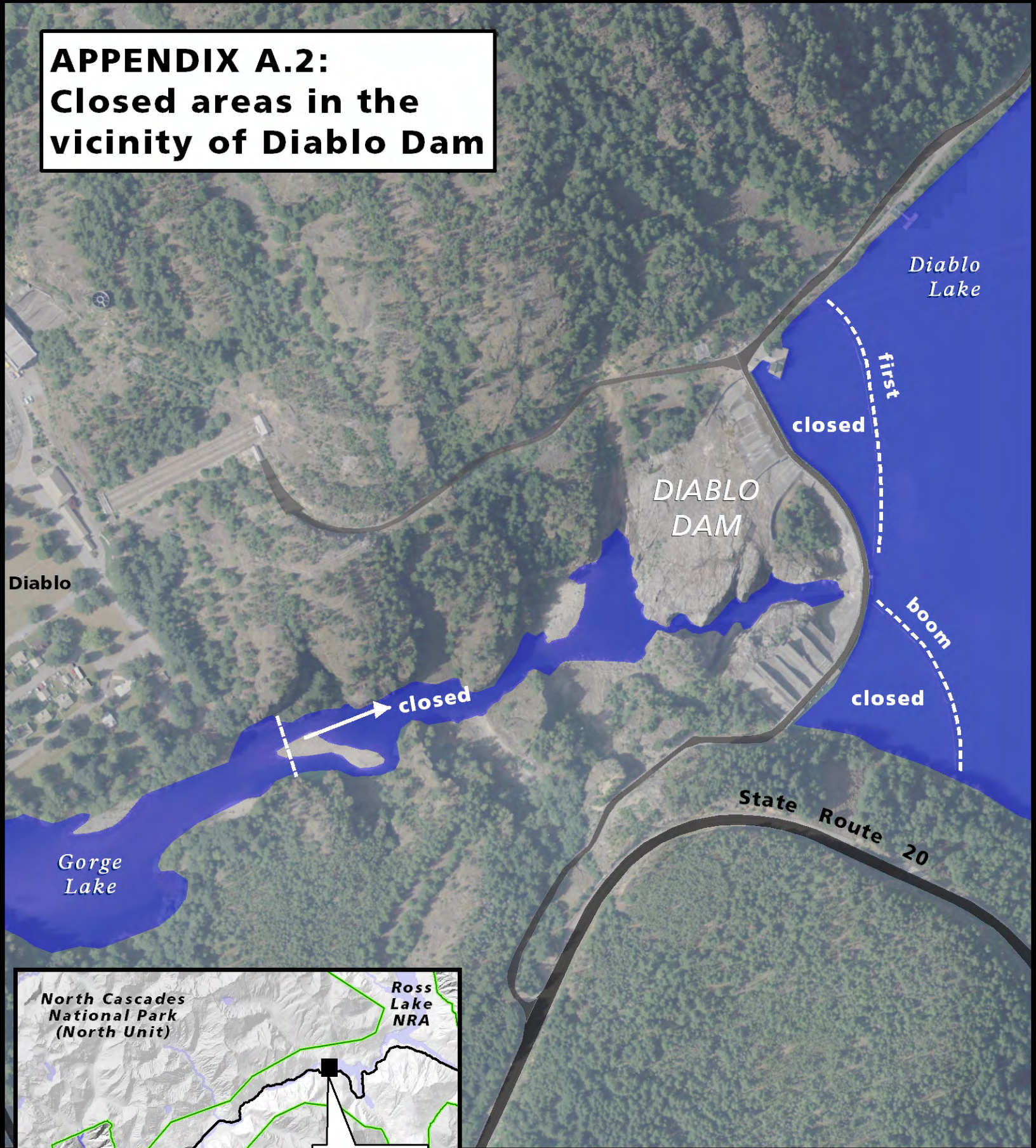


1:1,963

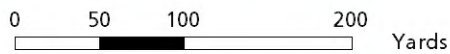




**APPENDIX A.2:  
Closed areas in the  
vicinity of Diablo Dam**

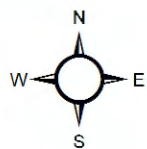
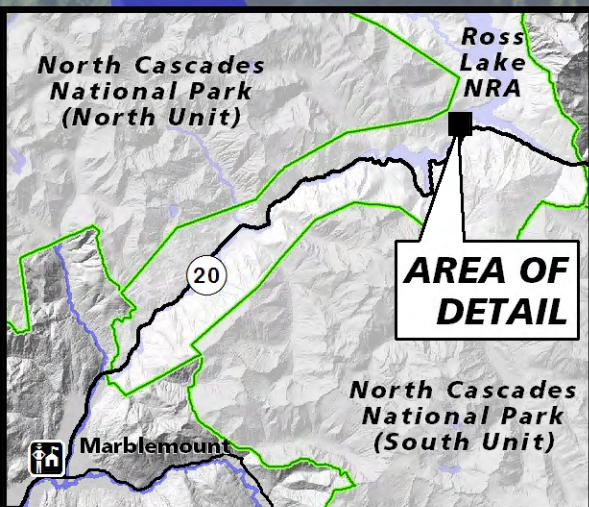
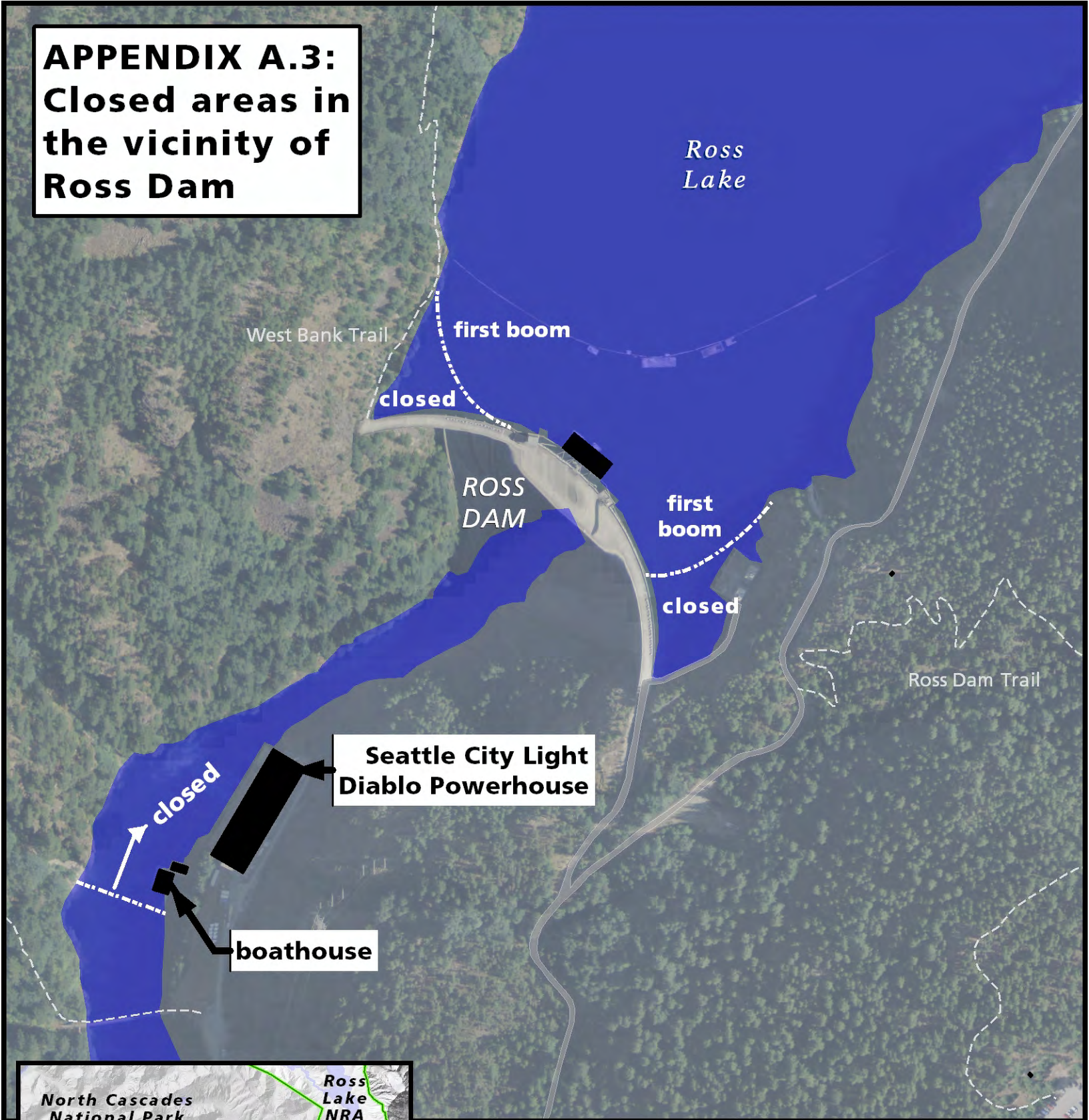


1:4,100

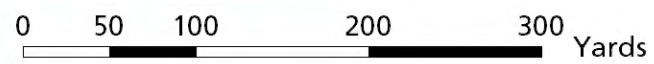




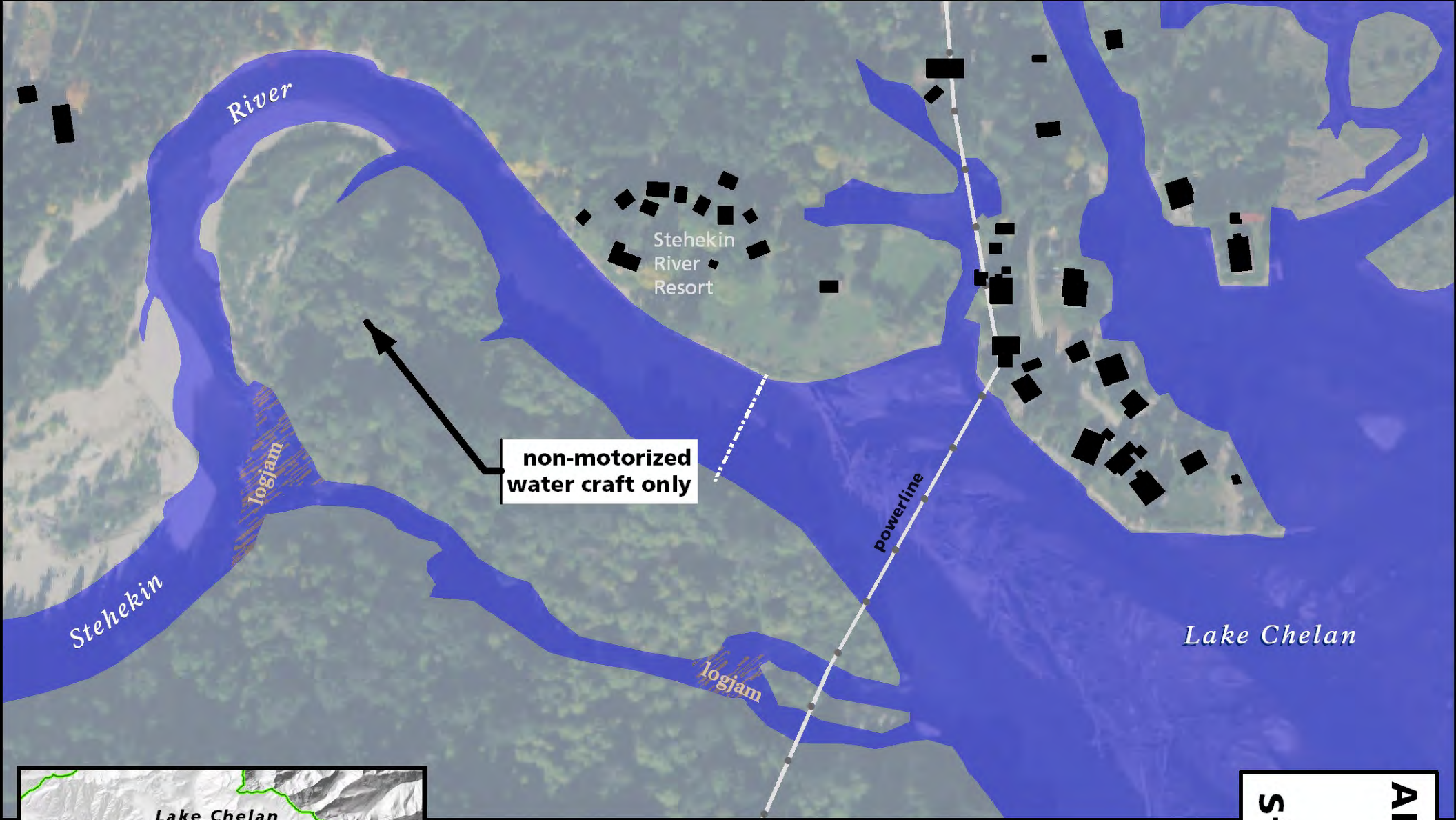
**APPENDIX A.3:  
Closed areas in  
the vicinity of  
Ross Dam**



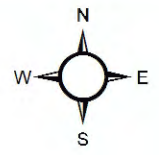
1:4,000







**APPENDIX A. 4:  
Water craft  
restriction  
Stehekin River**



1:2,587



NOCA GIS  
j:\lab\rangers\compendium/  
appendix\_A-4 stehekin rvr mouth.mxd  
19 March 2019



## APPENDIX B. Hunting Closure Areas



*Buckner Homestead Historic District – August 2012*  
NPS Photo – A. Braaten



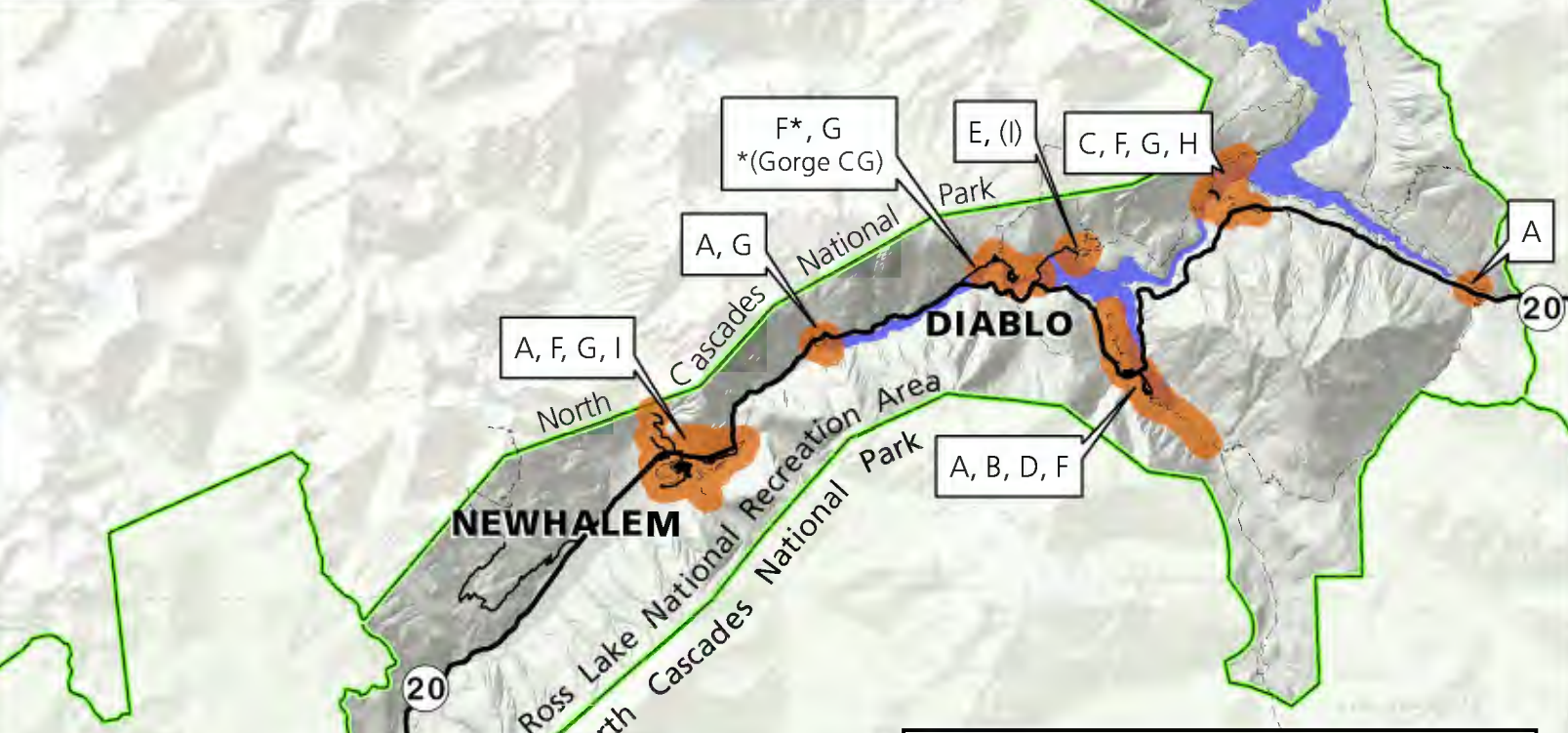
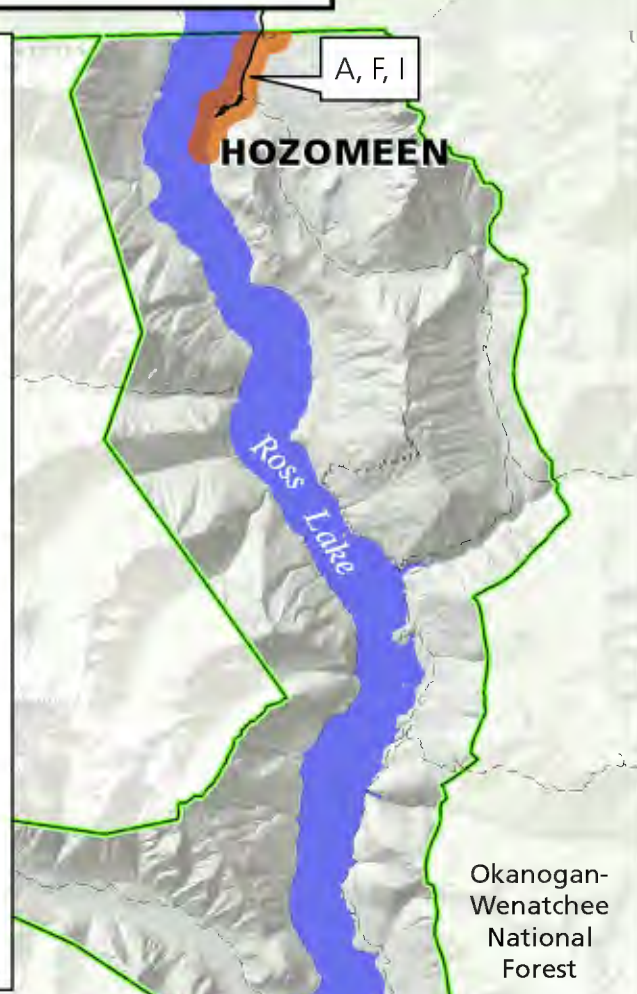
# Hunting closure areas, Ross Lake National Recreation Area

## 36 CFR 1.5 -- VISITING HOURS, PUBLIC USE LIMITS, CLOSURES AND AREA DESIGNATIONS FOR SPECIFIC USE OR ACTIVITIES


### Hunting Closures:

- A) Within ¼ mile of any trail signed as a nature trail.
- B) Within ¼ mile of the Thunder Creek Trail from the trailhead to the Thunder Creek Bridge.
- C) Within ¼ mile of the Happy Creek Boardwalk.
- D) Within ¼ mile of the Thunder Knob Trail from the trailhead to the summit of Thunder Knob.
- E) Within ¼ mile of the North Cascades Environmental Learning Center
- F) Within ¼ mile of the Hozomeen Road, Ross Lake Resort, Colonial Campground or Goodell Campground.
- G) Within ¼ mile of the towns of Newhalem and Diablo, or within ¼ mile of Gorge Dam, Diablo Dam, and Ross Dam and their associated Powerhouses.
- H) Within ¼ mile of the Ross Dam Trail from Highway 20 to Ross Dam or the Ross Dam Haul Road upstream from the dam.
- I) Within ¼ mile surrounding any visitor center, ranger stations and concession facilities or the Environmental Learning Center.

*Justification: This is necessary to protect park visitors within the National Recreation Areas who maybe unaware of hunting activities. Closing these areas to the discharge of firearms, even during hunting seasons, does not affect a person's ability to otherwise conduct successful hunting activities elsewhere in the recreational area.*



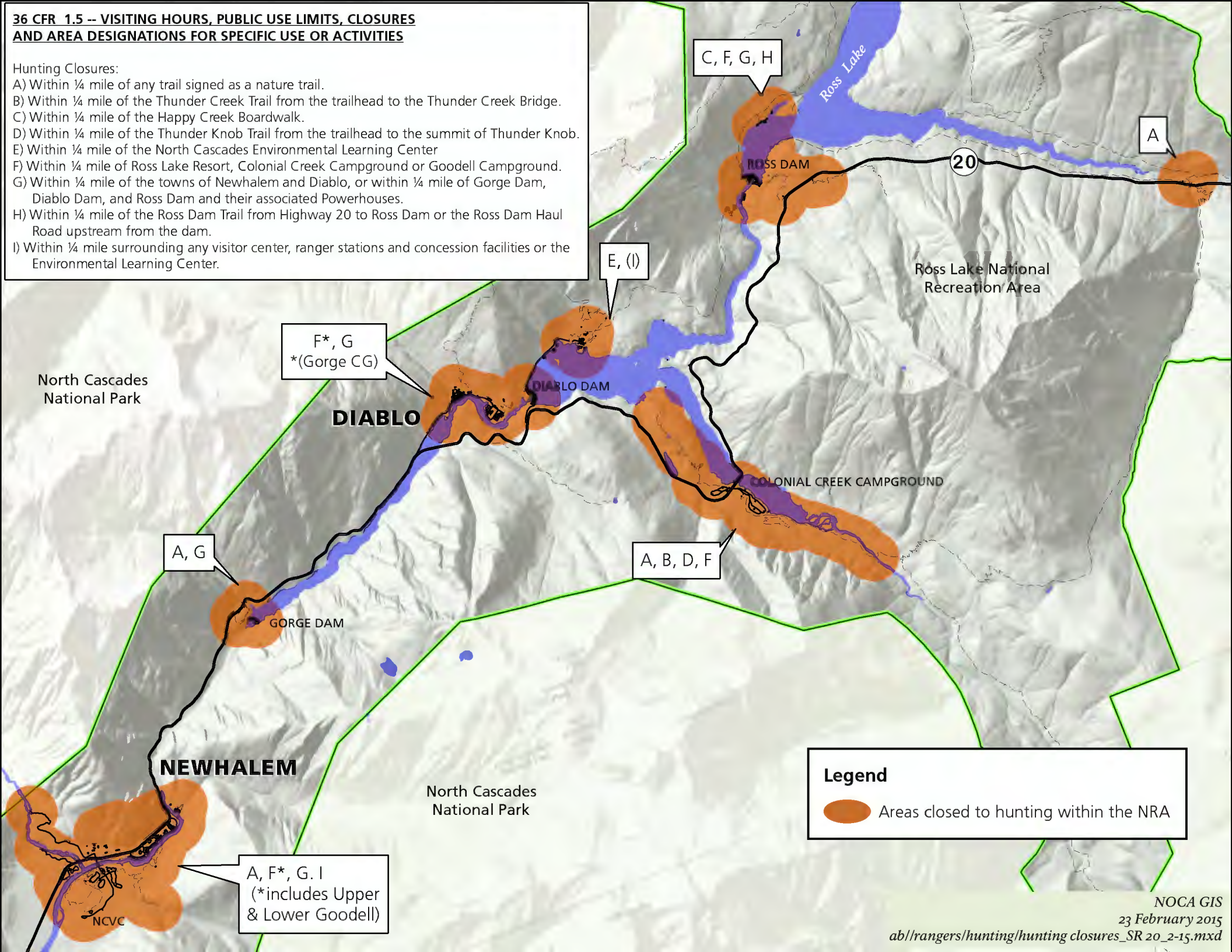
**Legend**

 Areas closed to hunting within the NRA



**36 CFR 1.5 -- VISITING HOURS, PUBLIC USE LIMITS, CLOSURES AND AREA DESIGNATIONS FOR SPECIFIC USE OR ACTIVITIES**

- Hunting Closures:
- A) Within ¼ mile of any trail signed as a nature trail.
  - B) Within ¼ mile of the Thunder Creek Trail from the trailhead to the Thunder Creek Bridge.
  - C) Within ¼ mile of the Happy Creek Boardwalk.
  - D) Within ¼ mile of the Thunder Knob Trail from the trailhead to the summit of Thunder Knob.
  - E) Within ¼ mile of the North Cascades Environmental Learning Center
  - F) Within ¼ mile of Ross Lake Resort, Colonial Creek Campground or Goodell Campground.
  - G) Within ¼ mile of the towns of Newhalem and Diablo, or within ¼ mile of Gorge Dam, Diablo Dam, and Ross Dam and their associated Powerhouses.
  - H) Within ¼ mile of the Ross Dam Trail from Highway 20 to Ross Dam or the Ross Dam Haul Road upstream from the dam.
  - I) Within ¼ mile surrounding any visitor center, ranger stations and concession facilities or the Environmental Learning Center.



C, F, G, H

A

E, (I)


F\*, G  
\*(Gorge CG)

A, G

A, B, D, F

A, F\*, G, I  
(\*includes Upper & Lower Goodell)

**Legend**






 Areas closed to hunting within the NRA

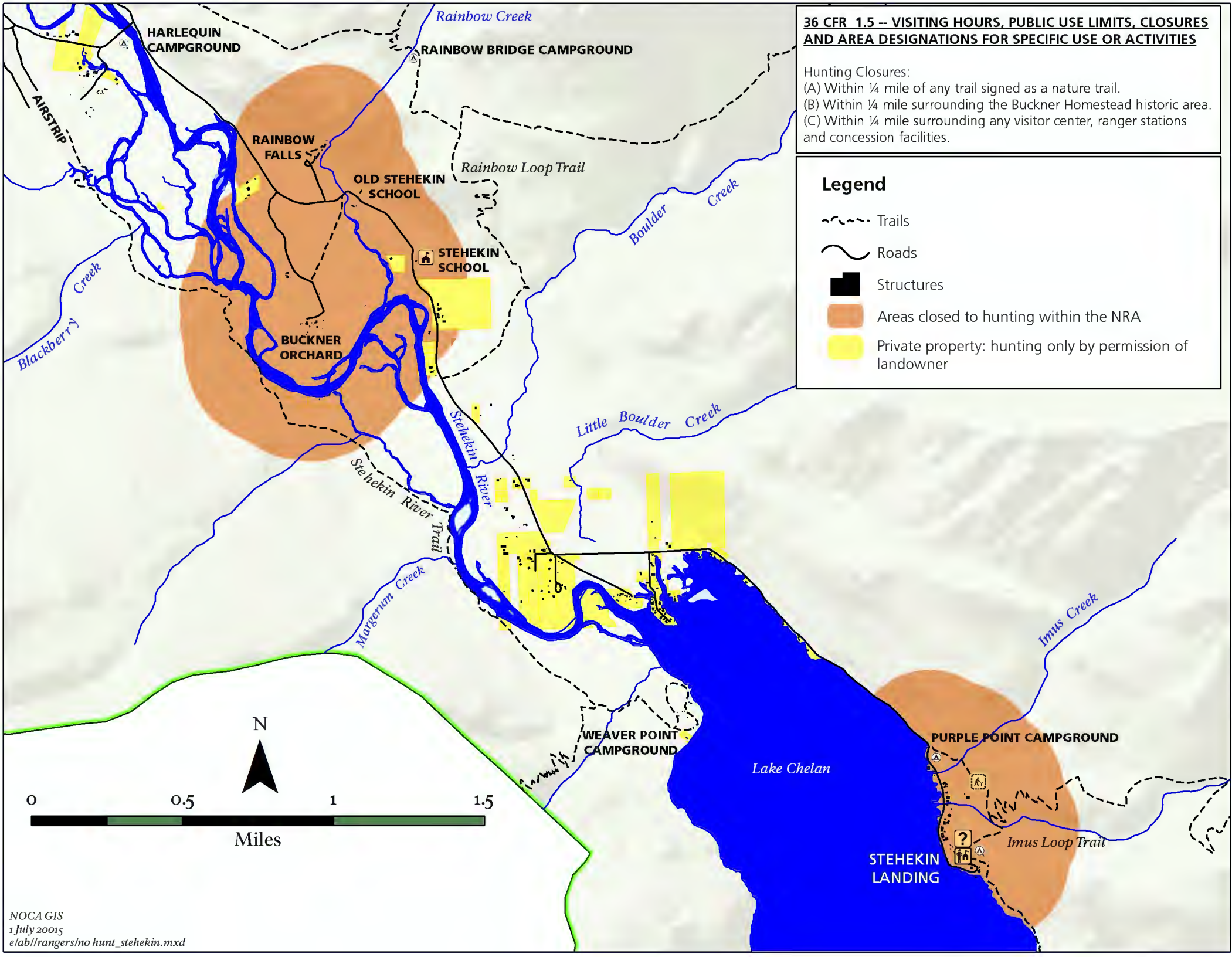


**36 CFR 1.5 -- VISITING HOURS, PUBLIC USE LIMITS, CLOSURES AND AREA DESIGNATIONS FOR SPECIFIC USE OR ACTIVITIES**

Hunting Closures:  
 (A) Within ¼ mile of any trail signed as a nature trail.  
 (B) Within ¼ mile surrounding the Buckner Homestead historic area.  
 (C) Within ¼ mile surrounding any visitor center, ranger stations and concession facilities.

**Legend**

-  Trails
-  Roads
-  Structures
-  Areas closed to hunting within the NRA
-  Private property: hunting only by permission of landowner





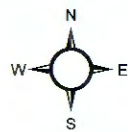
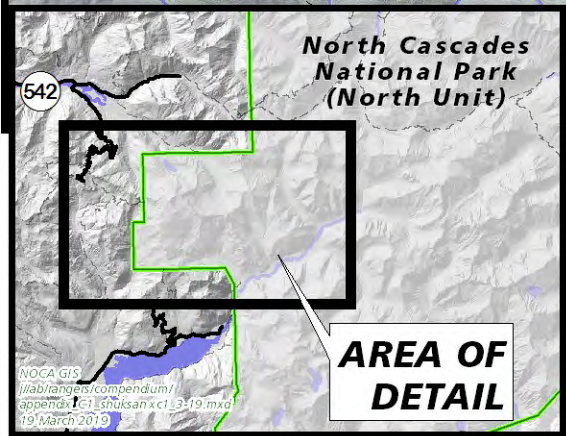
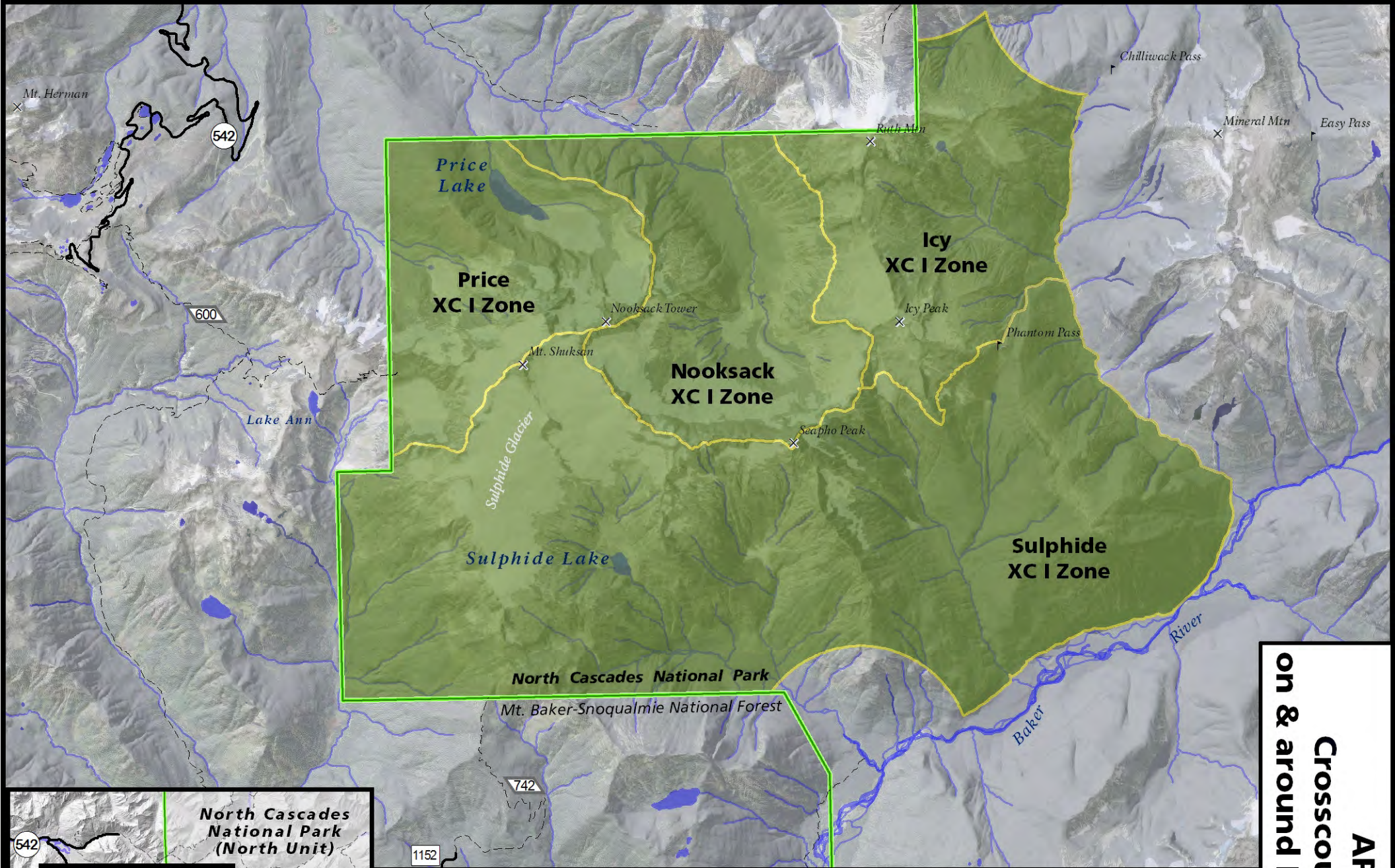
# APPENDIX C.

## Maps of Crosscountry I Zones



*Forbidden Peak, July 2013*  
*NPS Photo – A. Braaten*





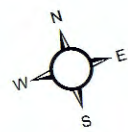
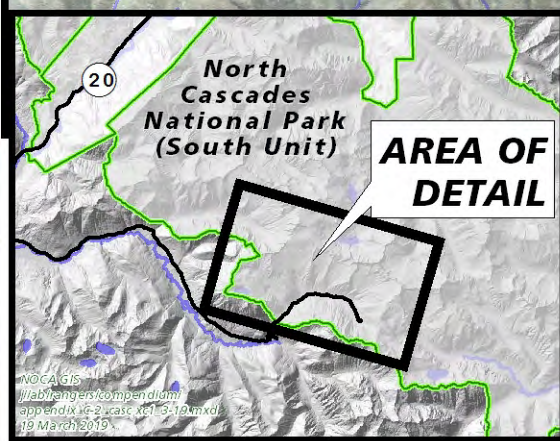
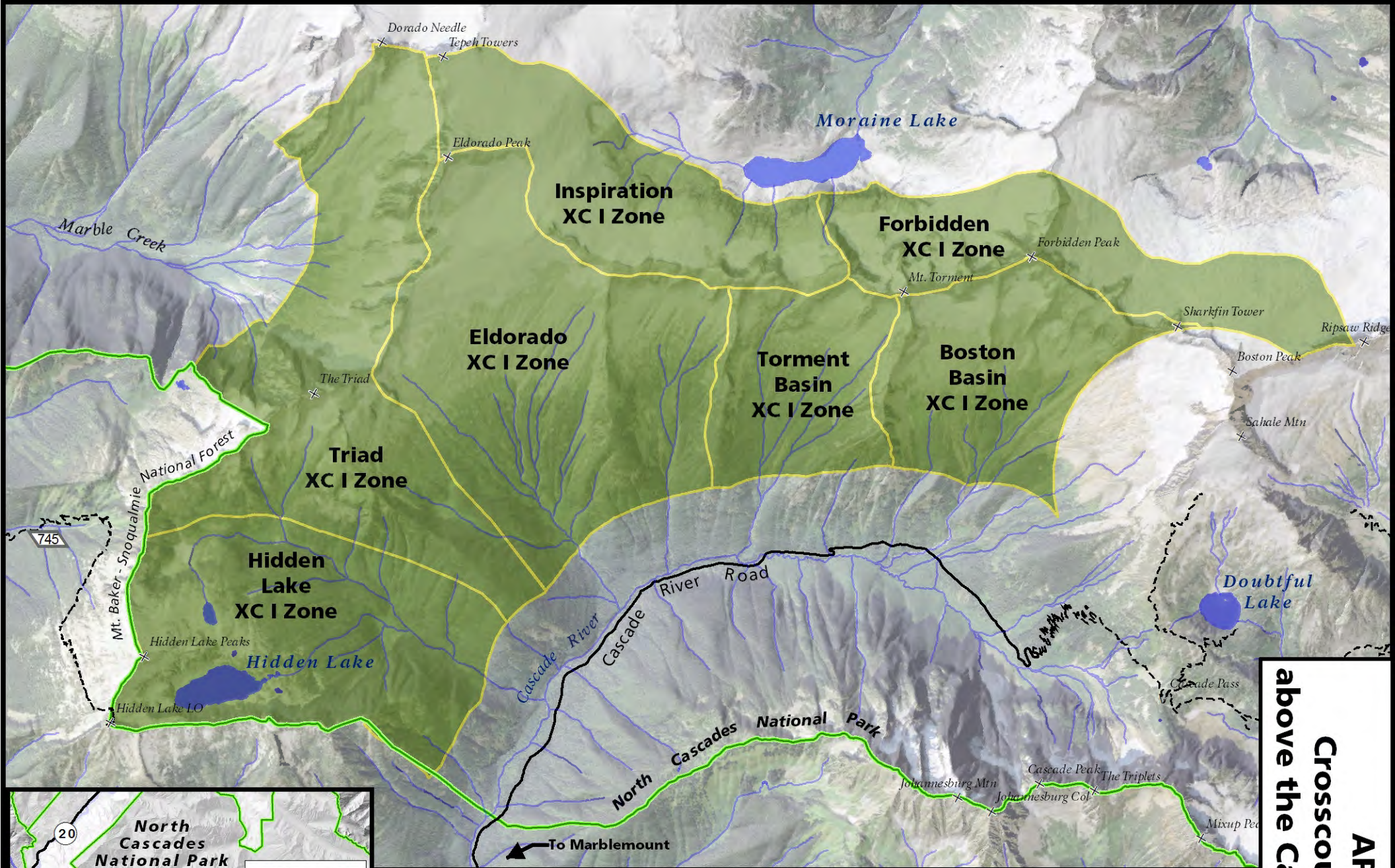
1:72,937



Miles

**APPENDIX C.1:  
Crosscountry I areas  
on & around Mt. Shuksan**





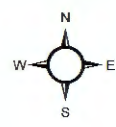
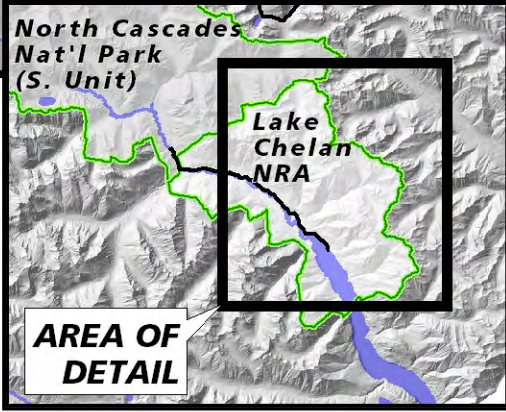
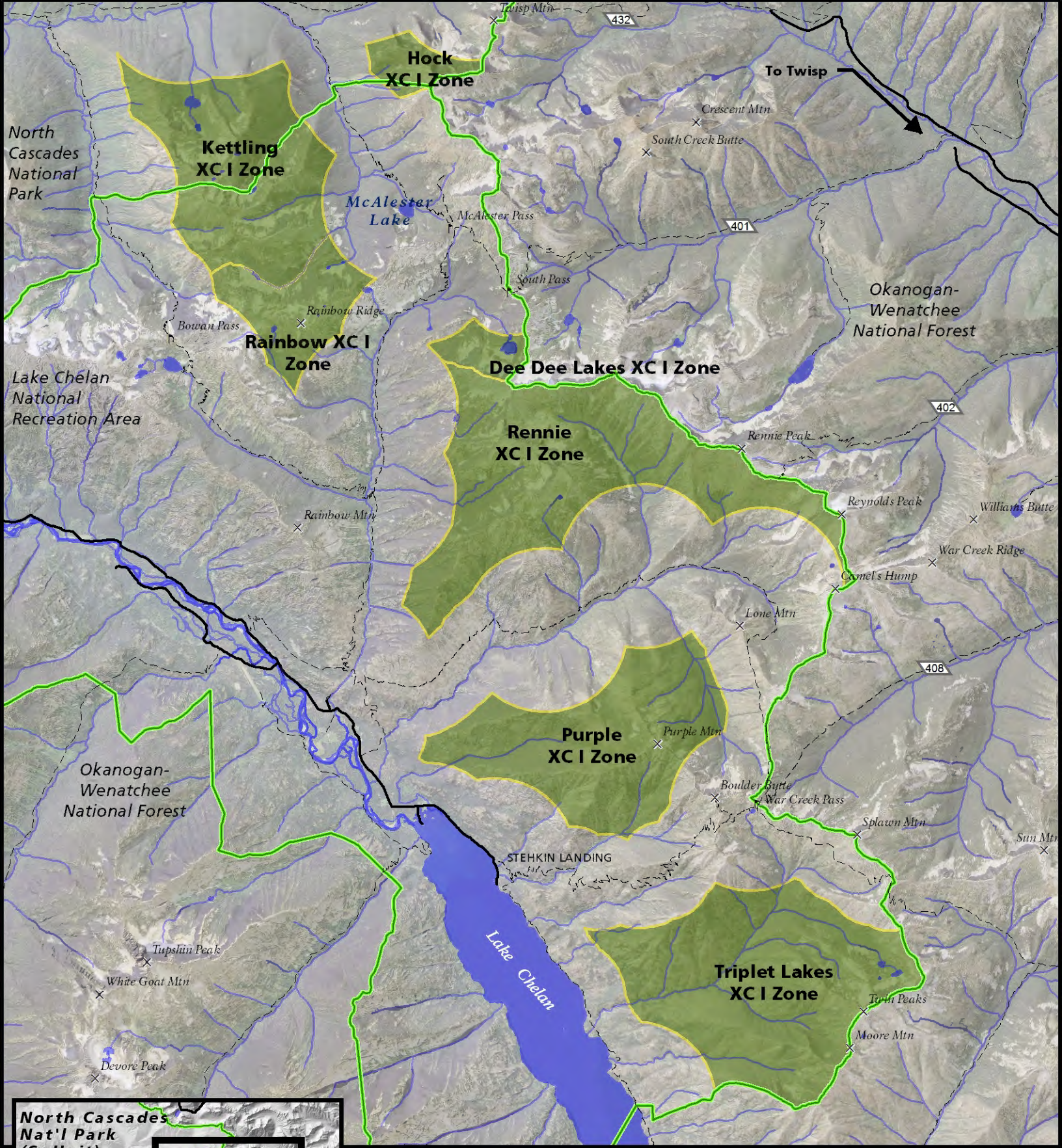
1:53,000



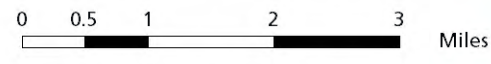
**APPENDIX C.2:  
Crosscountry I areas  
above the Cascade River**

NOCA GIS  
 //lab/layers/compendium/  
 appendix\_c2\_case\_xc1\_3-19.mxd  
 19 March 2019



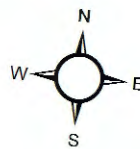
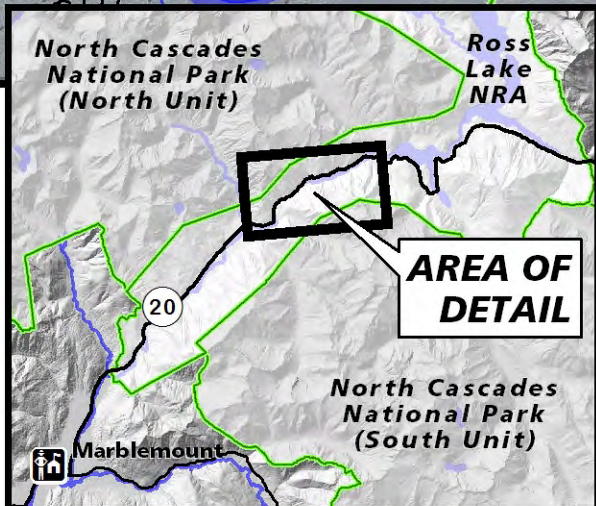
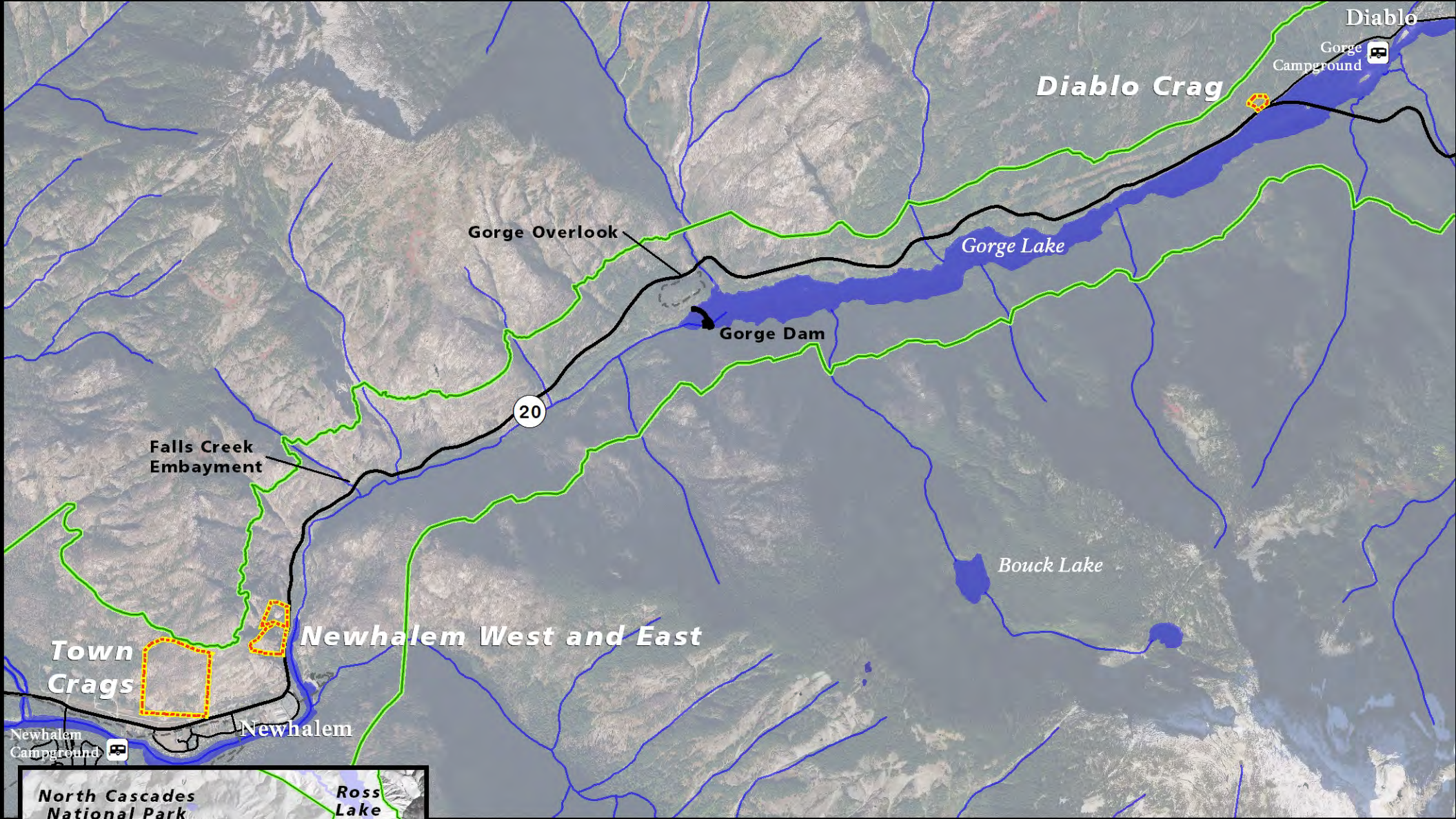


1:96,515

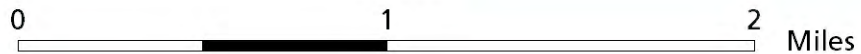


**APPENDIX C.3:  
Crosscountry I Stock Zones,  
Lake Chelan NRA**





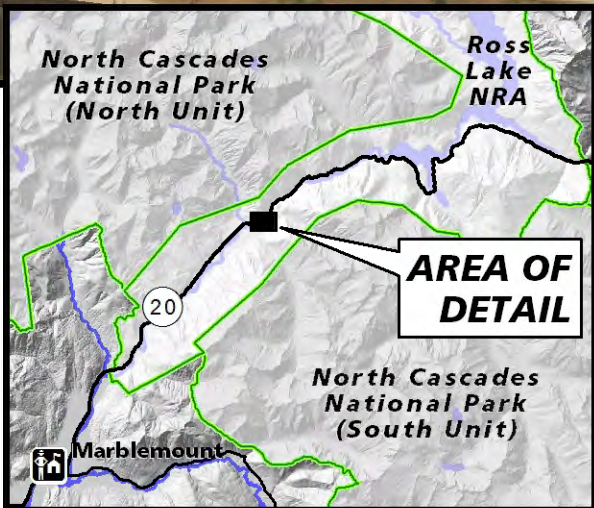
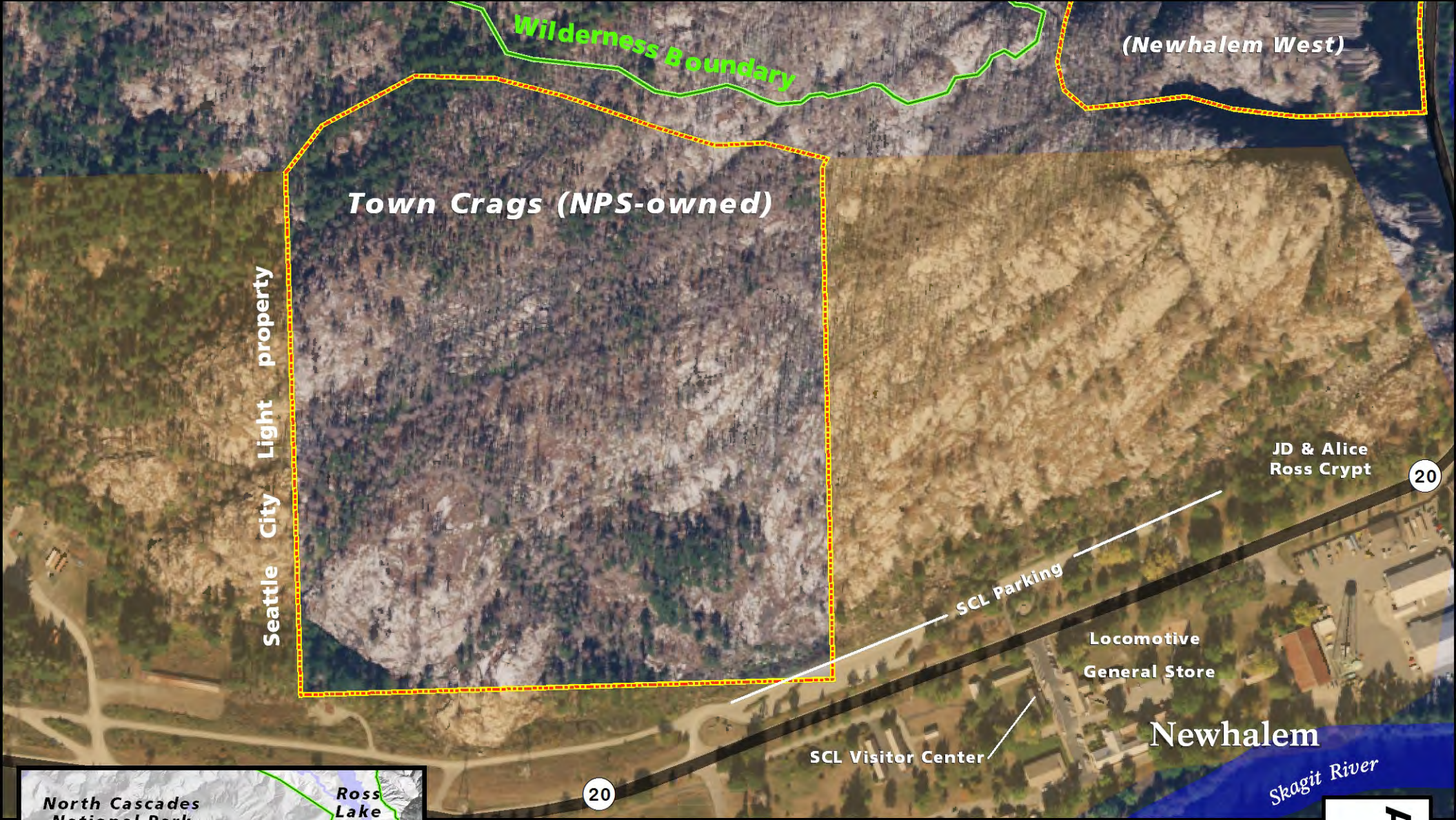
1:33,058



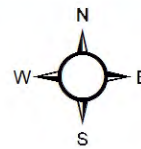
NOCA GIS  
 jllab/rangers/compendium/  
 CMA\_Overview 3-2019.mxd  
 18 March 2019

**APPENDIX D**  
**Climbing**  
**Management**  
**Areas**

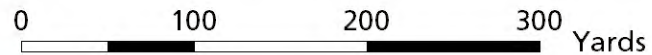




NOCA GIS  
 jflab/rangers/compendium/  
 CMA\_Town Crags 3-2019.mxd  
 18 March 2019

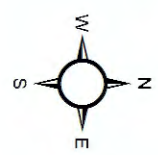
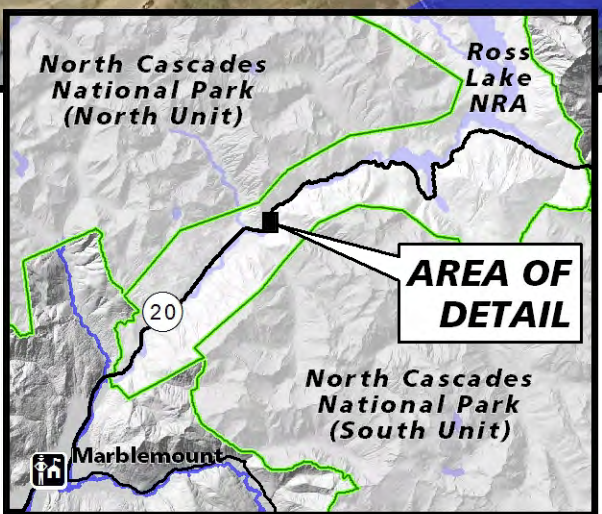


1:4,000

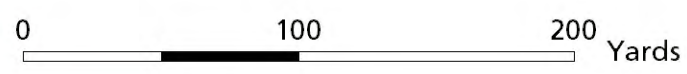


**APPENDIX D.1**  
**Town Crags**





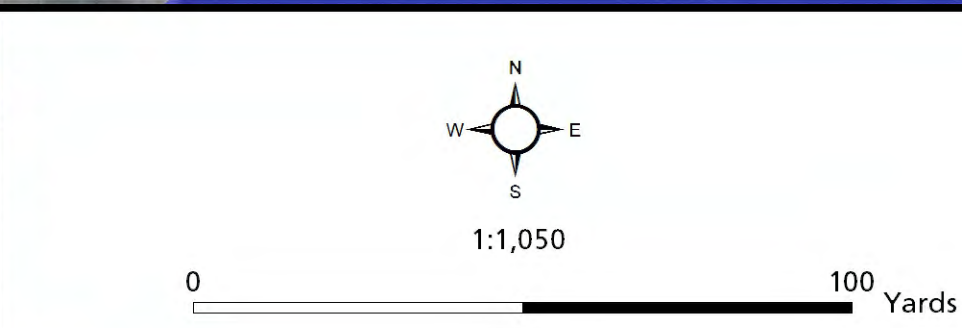
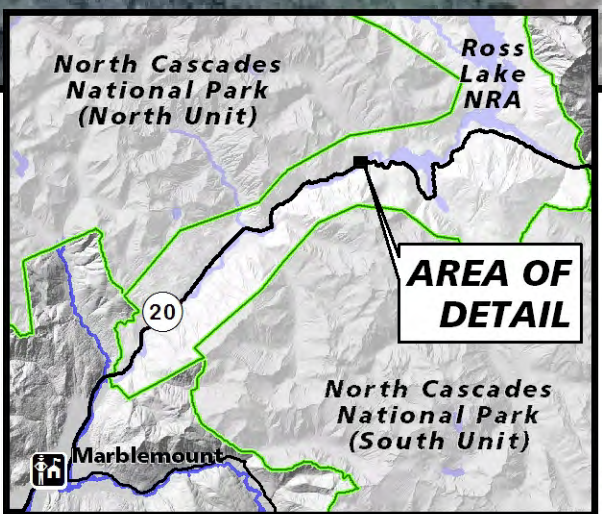
1:2,506



NOCA GIS  
 j\\lab\rangers\compendium\  
 CMA\_Newhalem W-n-E 3-2019.mxd  
 18 March 2019

**APPENDIX D.2**  
**Newhalem**  
**West and**  
**East**





NOCA GIS  
 j/lab/rangers/compendium/  
 CMA\_Diablo Y 3-2019.mxd  
 18 March 2019

**APPENDIX D.3**  
**Diablo Crag**



# APPENDIX F: Stehekin Parking Plan

## Parking Areas at Stehekin Landing

### 14-Day Limit:

- ① *Purple Point*
- ② *Log Office*
- ③ *Cabana*

### 7-Day Limit:

- ④ *Lodge*

### Day Use

- ⑤ *Lodge*

### Long Term/NPS

- ⑥ *Behind Imus*  
*Behind/above Golden West*

### Employee (Concession)

- ⑦ *Post Office*

### Employee (NPS/ House That Jack Built)

- ⑧ *Golden West/ Fire Cache*

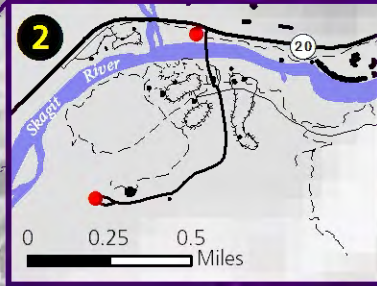
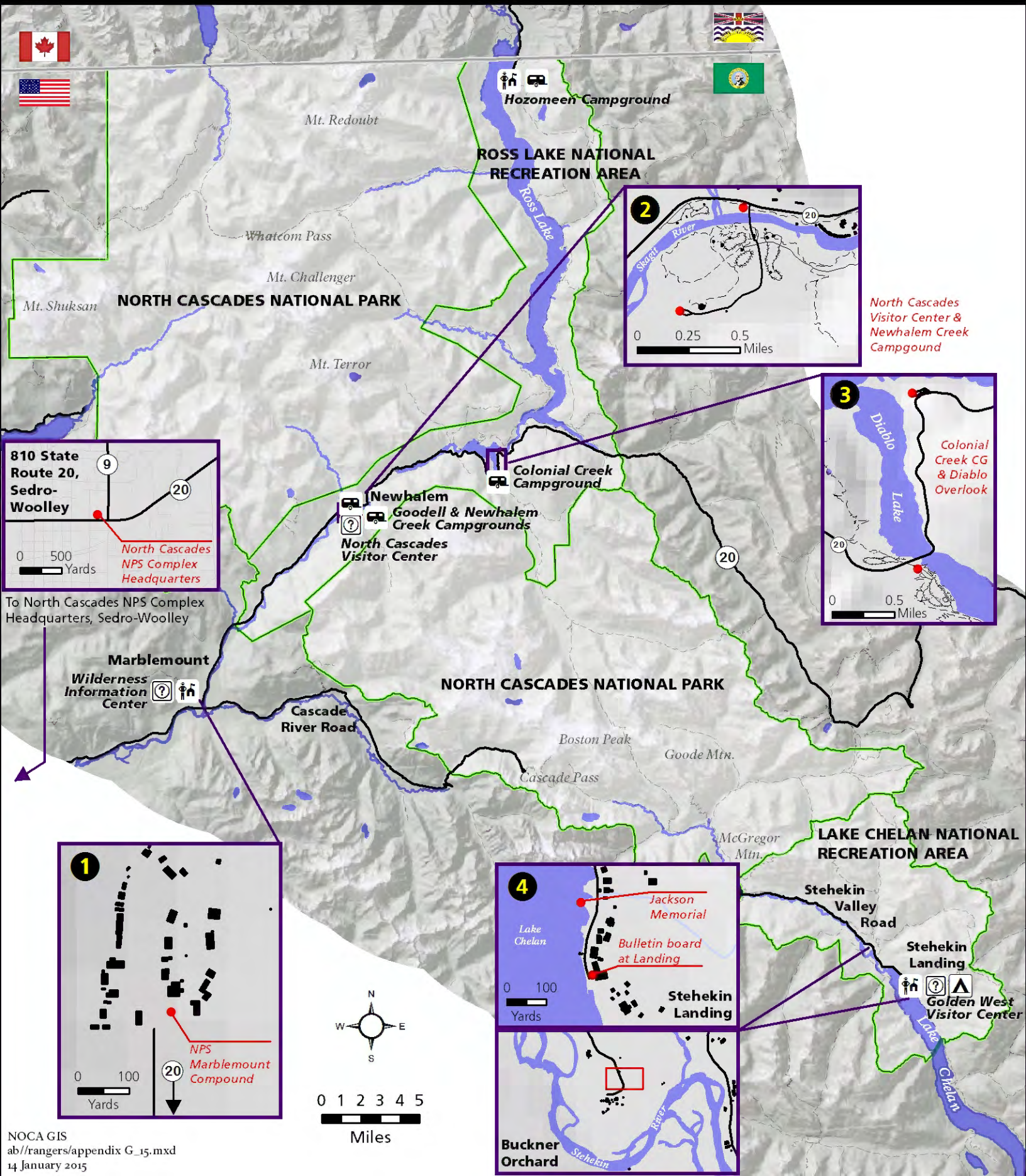
GWVC



# APPENDIX G. North Cascades National Park Service Complex



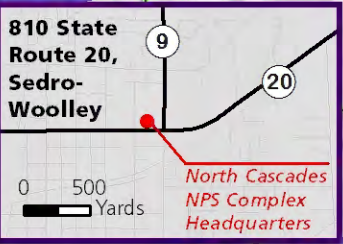
Vicinity map of locations available for public assemblies and meetings and for the sale and distribution of printed matter. Detailed maps to follow as G.1-4.



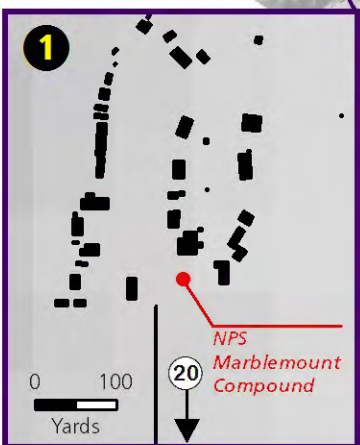
North Cascades Visitor Center & Newhalem Creek Campground



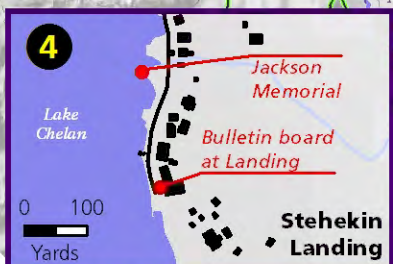
Colonial Creek CG & Diablo Overlook



To North Cascades NPS Complex Headquarters, Sedro-Woolley



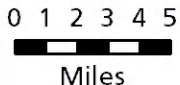
NPS Marblemount Compound



Jackson Memorial  
Bulletin board at Landing

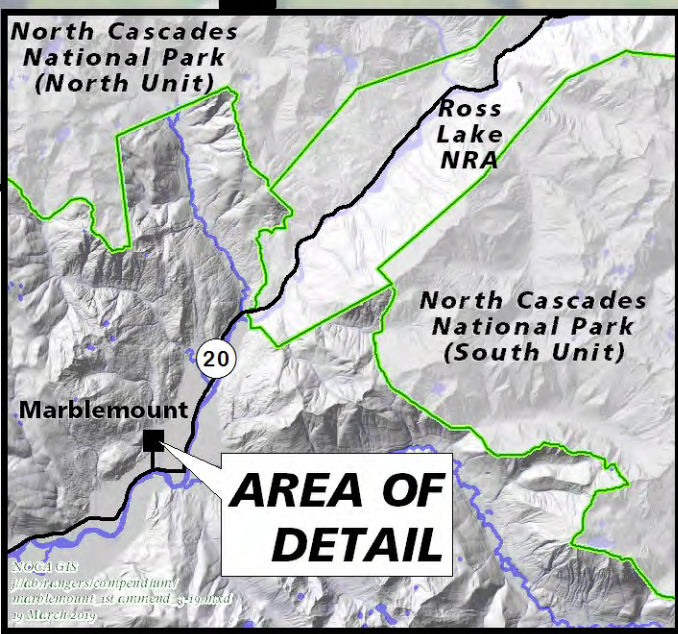
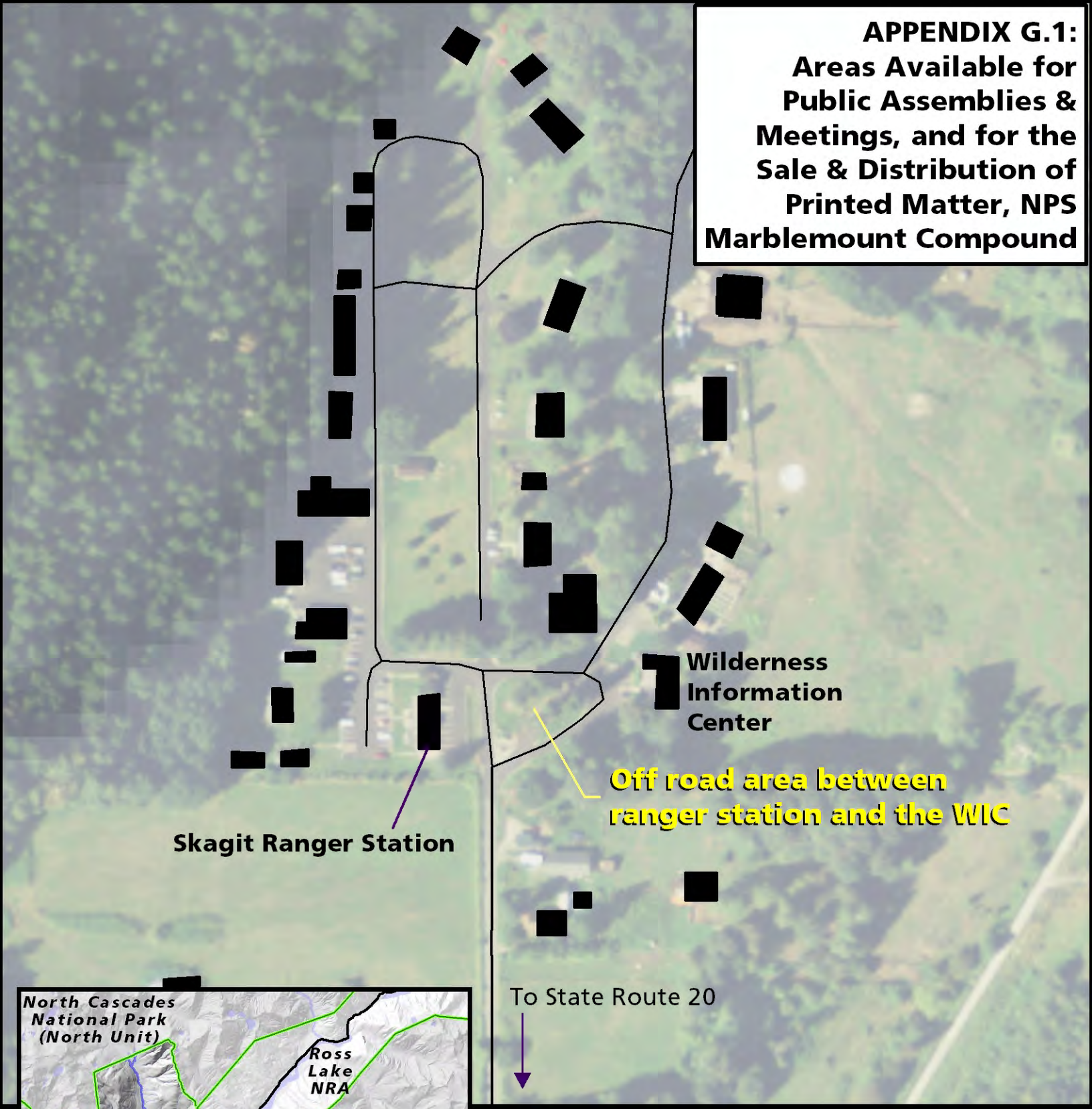


Buckner Orchard

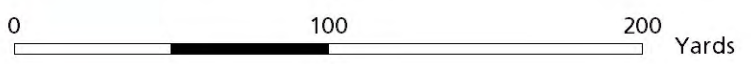




**APPENDIX G.1:  
Areas Available for  
Public Assemblies &  
Meetings, and for the  
Sale & Distribution of  
Printed Matter, NPS  
Marblemount Compound**

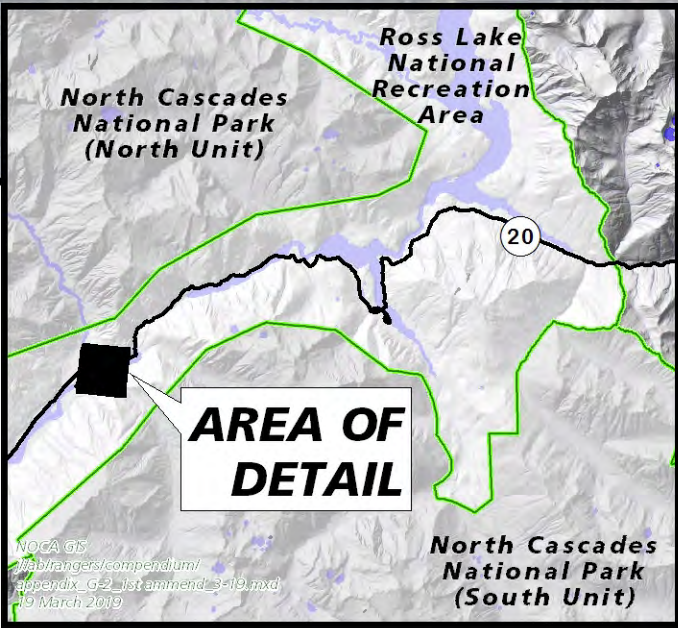
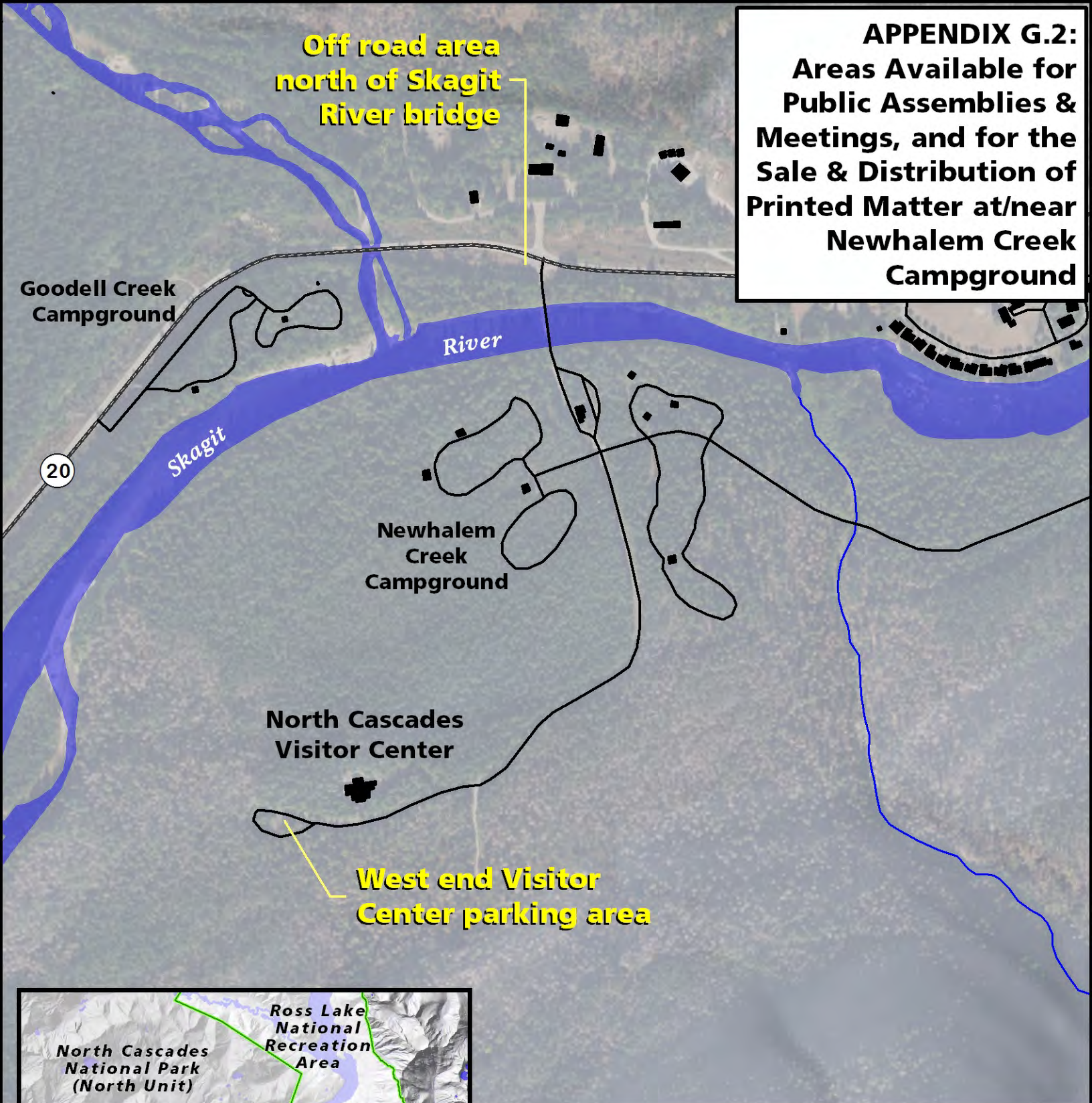


**NPS Marblemount  
Compound**

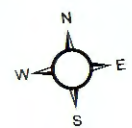




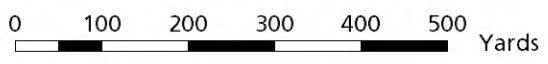
**APPENDIX G.2:  
Areas Available for  
Public Assemblies &  
Meetings, and for the  
Sale & Distribution of  
Printed Matter at/near  
Newhalem Creek  
Campground**



**Newhalem Creek Campground  
& North Cascades Visitor Center**

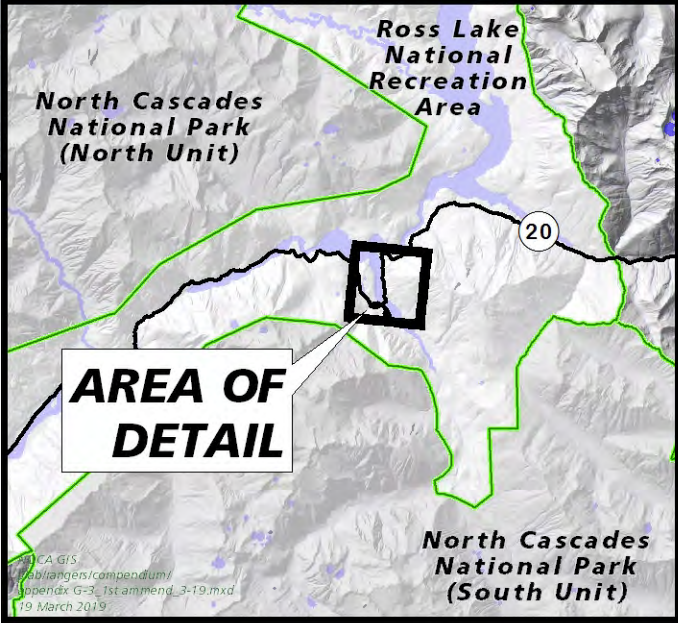
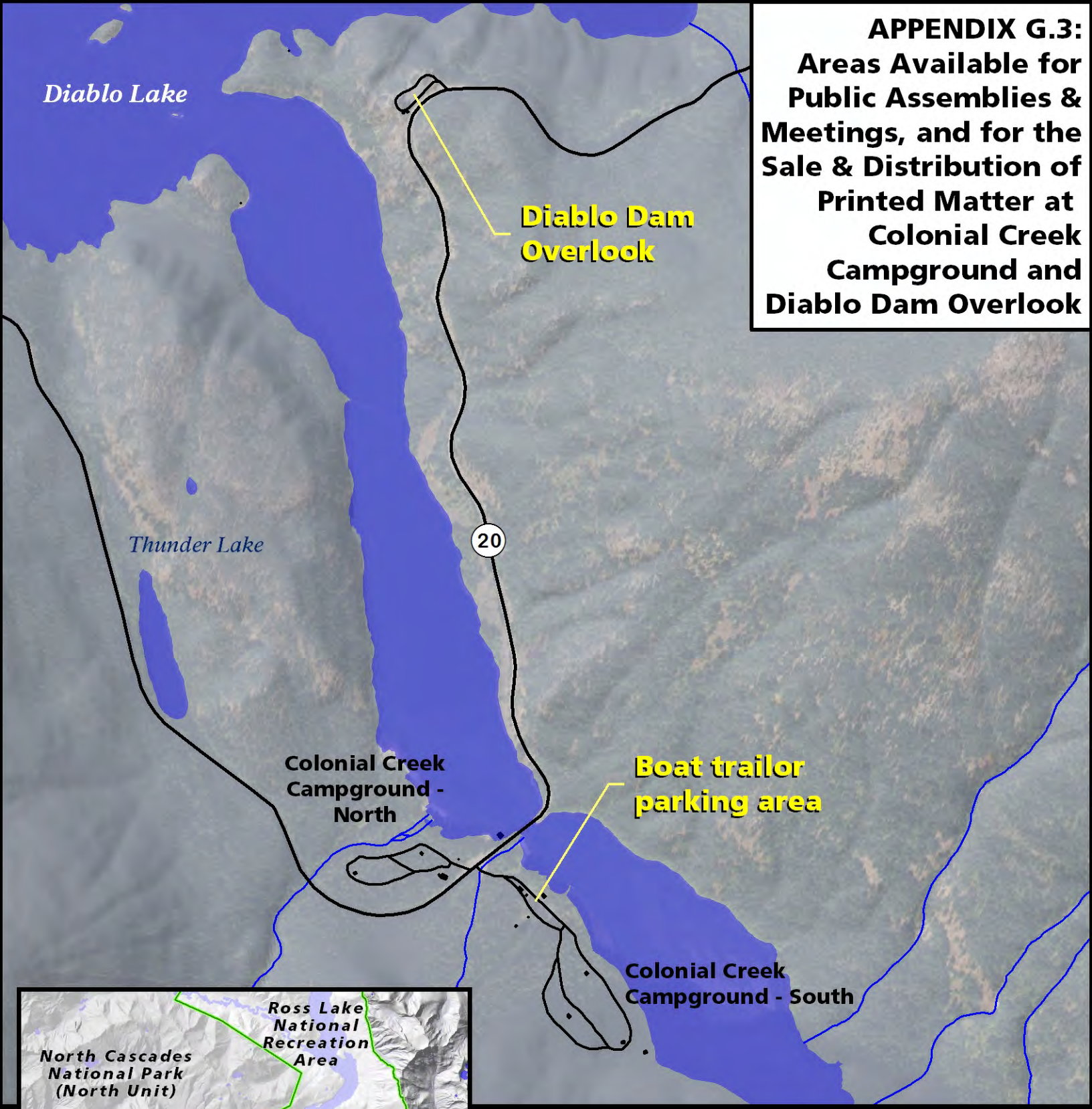


1:8,000

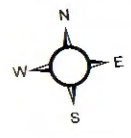




**APPENDIX G.3:  
Areas Available for  
Public Assemblies &  
Meetings, and for the  
Sale & Distribution of  
Printed Matter at  
Colonial Creek  
Campground and  
Diablo Dam Overlook**



**Colonial Creek Campground  
and Diablo Dam Overlook**



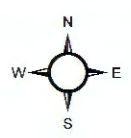
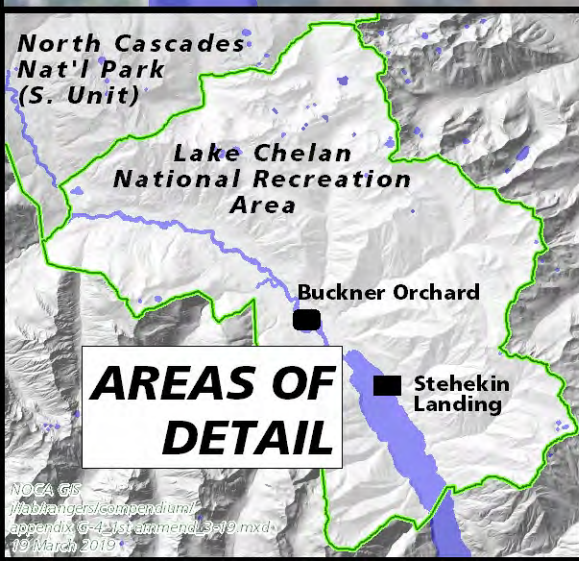
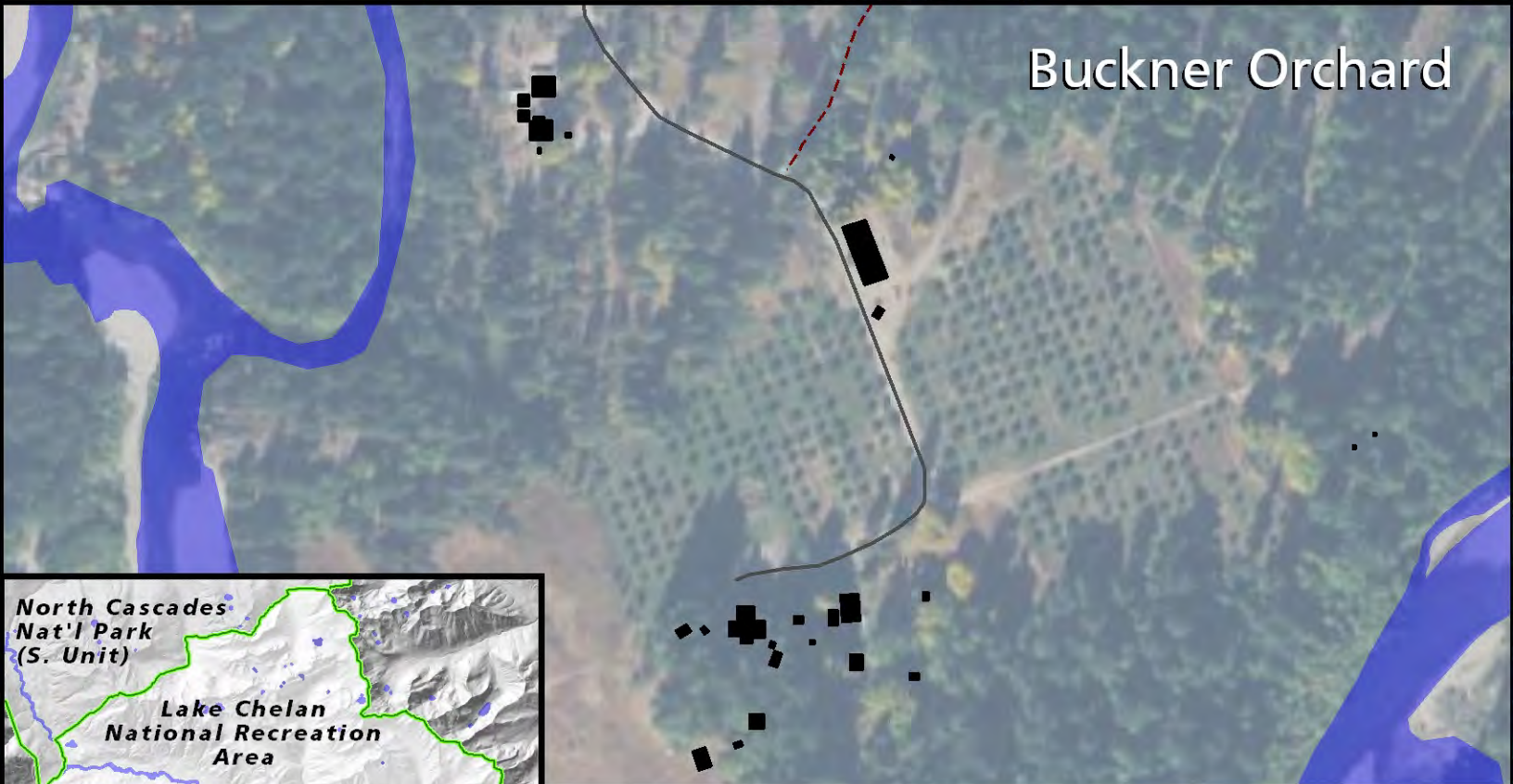
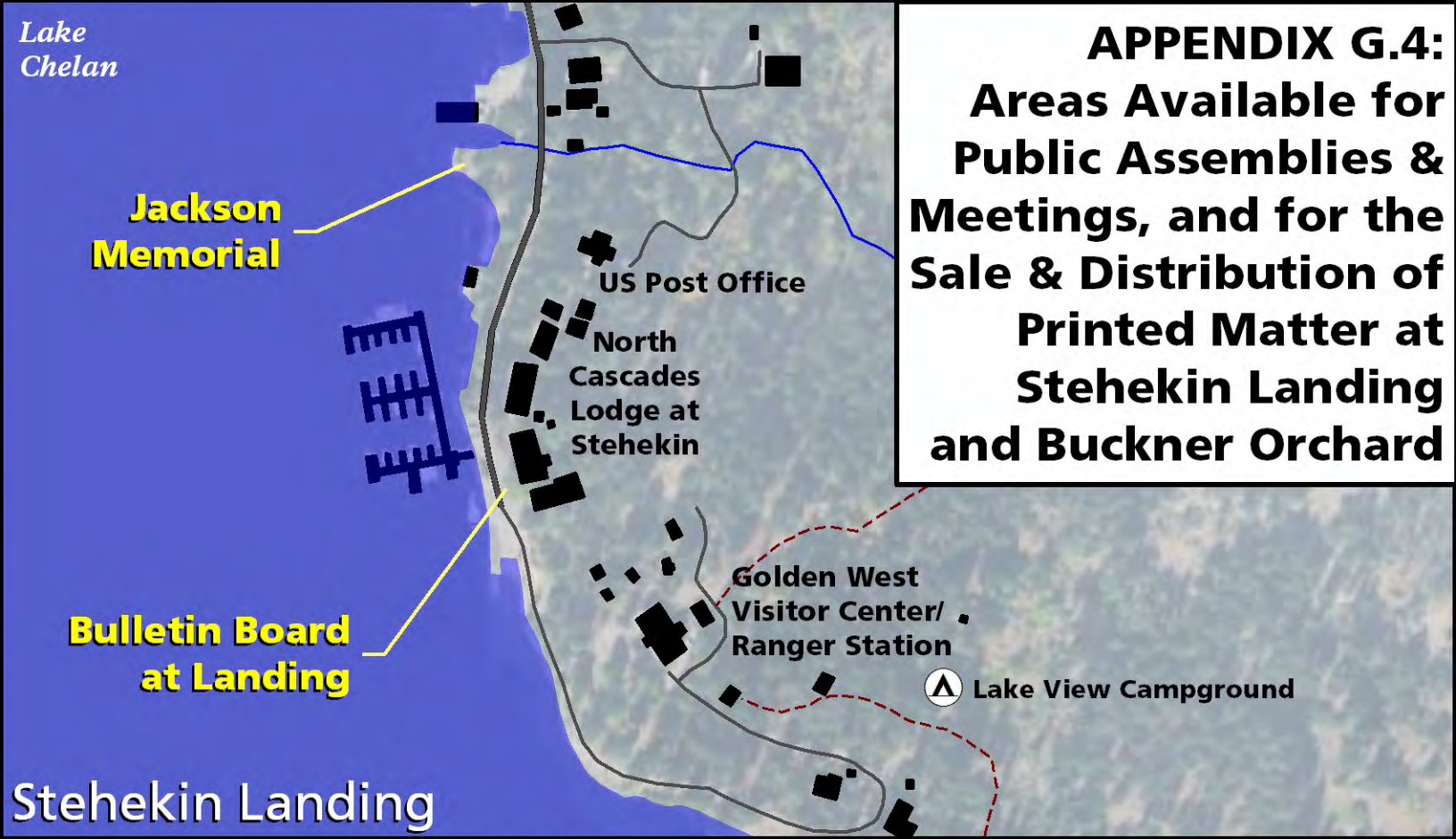
1:14,372





# APPENDIX G.4:

## Areas Available for Public Assemblies & Meetings, and for the Sale & Distribution of Printed Matter at Stehekin Landing and Buckner Orchard



1:3,519

