

**WRANGELL-ST. ELIAS NATIONAL PARK AND PRESERVE  
COMPENDIUM  
2025**

National Park Service (NPS) regulations applicable to the protection and equitable public use of units of the National Park System grant specified authorities to a park superintendent to allow or restrict certain activities. NPS regulations are found in Titles 36 and 43 of the Code of Federal Regulations (CFR) and created under authority and responsibility granted the Secretary of Interior in Titles 16 and 54 of the United States Code. The following compendium comprises a listing of NPS regulations that provides the Superintendent with discretionary authority to make designations or impose public use restrictions or conditions in park areas. The applicability and scope of the compendium is articulated in 36 CFR Sections 1.2 and 13.2, and 43 CFR Section 36.1.

The larger body of NPS regulations that do not provide discretionary authority to the Superintendent is not cited in this compendium. A complete and accurate picture of regulations governing use and protection of the unit can only be gained by viewing this compendium in context with the full body of applicable regulations found in Titles 36 and 43 CFR.

*Please contact Wrangell-St. Elias National Park and Preserve, Copper Center, Alaska at (907) 822-7210 for questions relating to information provided in this compendium.*

**All previous editions of the compendium are suspended.**

---

**Superintendent**

**Date**

## **TITLE 36 CODE OF FEDERAL REGULATIONS**

### **PART 1. GENERAL PROVISIONS**

#### **1.6(f) Compilation of activities requiring a permit**

- Collecting research specimens, 2.5
- Operating a power saw in developed areas, 2.12(a)(2)
- Operating a portable motor or engine in undeveloped areas, 2.12(a)(3)
- Operating a public address system, 2.12(a)(4)
- Air delivery, 2.17(a)(3)
- Noncommercial soliciting, 2.37
- Using, possessing, storing, or transporting explosives, blasting agents, or explosive materials, 2.38(a)
- Using or possessing fireworks and firecrackers, 2.38(b)
- Special events, 2.50(a)
- Demonstrations involving 26 or more persons, 2.51
- Sale and distribution of printed matter for First Amendment purposes by groups of 26 or more persons, 2.52
- Grazing, 2.60(a)(1), (2)
- Residing on federal lands, 2.61(a)
- Installing a monument or other commemorative installation, 2.62(a)
- Towing a person using a parasail, hang glider, or other airborne device, 3.12(b)
- Removing sunken, grounded, or disabled vessels, 3.14(a)
- Operating a submersible, 3.19
- Commercial notices or advertisements, 5.1
- Commercial operations, 5.3
- Some filming, still photography, and audio recording (depends upon the facts and circumstances; contact the park for more information). 36 CFR 13.50 and 54 U.S.C. 100905
- Construction or repair of any building, structure, facility, road, trail, or airstrip on federal lands, 5.7
- Mining operations (9.9(a)) or an approved Plan of Operations (in lieu of permit))
- Scientific research, 13.50
- Launching, landing, or operating unmanned aircraft, 13.50
- Cabins on federal lands, 13.100-13.188
- Subsistence use in the Park by person who does not live within the Park boundary or a resident zone community, 13.440(a)
- Using aircraft access for subsistence activities in the Park, 13.450(a), 13.450(b)(1), 13.3002(a)(3)
- Cutting of standing timber greater than 3 inches in diameter for non-commercial subsistence uses, 13.485(a)(1)
- Access to inholdings where access is not made by aircraft, snowmachine, motorboat or non-motorized surface transportation, 43 CFR 36.10(b)
- Salvaging, removing, possessing aircraft, 43 CFR 36.11 (f)(3)(ii)
- Helicopter use, 43 CFR 36.11(f)(4)
- Off-road vehicle (ORV) use, 43 CFR 36.11(g)(2)
- Temporary access across federal land for survey, geophysical or exploratory work, 43 CFR 36.12(c)

## **PART 2. RESOURCE PROTECTION, PUBLIC USE AND RECREATION**

### **2.1(a)(4) Designated areas for collection of dead wood on the ground for firewood**

Superseded by 13.35(c)(4), 13.35(d), and 13.485(b).

### **2.1(a)(5) Designated areas and conditions for walking on, climbing, entering, ascending, descending, or traversing an archeological or cultural resource, monument, or statue**

No designated areas or conditions.

See 13.1904 for Kennecott Mines National Historic Landmark.

### **2.1(b) Designated trails**

No restrictions on walking or hiking.

### **2.1(c)(1)-(3) Designated fruits, nuts, berries, and unoccupied seashells to harvest by hand and collection restrictions**

Superseded by 13.35(c) and 13.485(b).

### **2.2(d) Established conditions and procedures for transporting lawfully taken wildlife through park areas**

See also 13.42(e).

### **2.2(e) Designated areas for wildlife viewing with artificial light**

No areas designated for closure.

### **2.3(d)(8) Designated areas open for fishing from motor road bridges and public boat docks**

All areas are designated as open for fishing from motor road bridges and boat docks.

### **2.4(a)(2)(i), (h) Carrying, using, or possessing weapons**

Individuals are authorized to possess firearms in NPS areas in accordance with applicable state and federal law. With the exception of public use cabins, possession of firearms is prohibited in Federally owned or leased buildings. The laws regarding discharge of firearms remain unchanged.

### **2.10(a) Camping: conditions and permits**

Superseded in part by 13.25.

See also 13.1904 for conditions specific to Kennecott Mines National Historic Landmark (KNHL) and the mill site within KNHL.

### **2.10(d) Food storage: designated areas and methods**

(1) Definition: A *bear resistant container* (BRC) means an item constructed to prevent access by a bear. BRC's include—

- Items approved by the Department of Interior and Agriculture's Interagency Grizzly Bear Committee:  
<http://igbconline.org/certified-products-list/>
- Additional items listed by the State of Alaska, Department of Fish and Game, Division of Wildlife Conservation:

<http://www.adfg.alaska.gov/index.cfm?adfg=livingwithbears.bearcontainers>,  
with the concurrence of the Superintendent;

- Items or methods approved by the Superintendent.

(2) Throughout the park, all food (except legally taken game) and beverages, food and beverage containers, garbage, harvested fish and equipment used to cook or store food must be stored in a bear resistant container (BRC) or secured—

- Within a hard-sided building;
- Within lockable and hard sided section of a vehicle, vessel, or aircraft; or
- By caching a minimum of 100 feet from camp and suspending at least 10 feet above the ground and 4 feet horizontally from a post, tree trunk or other object on a line or branch that will not support a bear's weight.
- The Superintendent may, upon request, waive or modify food storage requirements in circumstances where compliance with these requirements is not possible, overly burdensome, and is consistent with public safety and wildlife conservation interests.

Note: This provision does not apply to:

- Clean dishes and cooking equipment that are free of food odors. We strongly recommend that these items be securely stored; but clean and odor free items are not required to be stored in secure containers.
- Food that is being transported, consumed or prepared for consumption.
- The use of bait for trapping and hunting under the provisions of state and federal law.
- Food carried by persons climbing or traveling above the firm line on snow covered terrain.

*The intent of these designations is to prevent bears and other wildlife from obtaining and becoming conditioned to food and garbage, thus protecting wildlife and park visitors alike. We strongly recommend that dishes and cooking equipment be securely stored; but clean and odor free items are not required to be stored in secure containers. Ice chests and coolers, tents, dry bags or stuff sacks, plastic packing boxes (Totes, Action Packers, etc) and unmodified kayaks are not approved as BRC. The park offers, at no charge, bear resistant containers for temporary use to the public. A refundable deposit is required, and the containers can be obtained at the park's visitor center in Copper Center, AK.*

## **2.11 Picnicking: designated areas**

Superseded by 13.26.

## **2.13(a)(1) Fires: designated areas and conditions**

State or local fire burn bans are automatically adopted under this section unless the superintendent determines the ban is not necessary in park areas.

Campfires and picnic fires are authorized in all areas of the park and preserve except:

- The Headquarters/Visitor Center Developed Area
- The mill site within the Kennecott National Historic Landmark. See 13.1904-13.1906.

- In the designated boundary of the Kendesnii Campground (*shown on the attached map*) lighting or maintaining a fire will be allowed only in designated camp fire rings.

Where fires are permitted, all trash (tin foil, burn food, glass, and cans) must be removed from the fire site after use.

A fire may be ignited and maintained only by using fuel sources designed and commonly used for warmth or the preparation of food, such as charcoal briquettes or natural firewood. Lighting or maintaining a fire with other materials including, but not limited to, flammable liquids, garbage, fireworks, plastics, aerosol canisters, batteries, or other manufactured or synthetic materials, is prohibited.

*This action is necessary for the maintenance of public health and safety, protection of environmental or scenic values, protection of natural or cultural resources, and the implementation of management responsibilities. Materials other than approved combustibles – especially fire accelerants and substances prone to wind transport or explosion – creates serious risks when used to light or maintain fires. These combustibles can ignite or spread wildfires that directly threaten people and valuable resources and assets. The burning of manufactured or synthetic materials can contribute to air pollution, contaminate soil and water, and be toxic to humans and the environment. Less restrictive measures, such as an education campaign informing visitors of the risks of using certain materials to light or maintain a fire, would not be commensurate with the substantial risks associated with those activities and could lead to adverse outcomes that might be prevented by establishing an enforceable condition.*

#### **2.14(a)(2) Sanitation and refuse: conditions using government receptacles**

No conditions established at present. Dumping commercial, household, or industrial refuse, brought in from private or municipal property, in government receptacles is prohibited.

#### **2.14(a)(5) Sanitation: designated areas for bathing and washing**

No designated areas. Unless otherwise allowed by the Superintendent, bathing and washing of cooking utensils, food and other property at all public water outlets, fixtures, or pools is prohibited.

#### **2.14(a)(7) Sanitation: designated areas for disposal of fish remains**

There are no designated areas.

*Fish remains may not be disposed of on either land or water within 200 feet of public boat docks or designated swimming beaches, or within developed areas for reasons of public health and safety.*

#### **2.14(a)(9), (b) Sanitation: disposal, carrying out of human waste**

There are no other designated areas or methods. Tissue paper and sanitary items should be packed out or burned when fire hazard is low.

*Disposing of human body waste within 100 feet of a water source, high water mark of a*

*body of water, or a campsite, or within sight of a trail is prohibited.*

**2.15(a)(1) Areas designated as closed to pets**

No designated areas. Pets must be leashed or physically restrained at all times.

**2.15(a)(3) Conditions for leaving pets unattended and tied to an object**

No conditions at present.

*Leaving pets unattended and tied to an object is prohibited.*

**2.15(a)(5) Pet excrement disposal conditions**

No conditions at present.

**2.16 (a)-(c) Horses and pack animals**

Superseded by 43 CFR 36.11(e).

Access for subsistence purposes under 36 CFR 13.460(a) supersedes this section.

**2.17(a)(1) Aircraft operation**

Superseded by 43 CFR 36.11(f)(1).

Use of aircraft in national parks or monuments for subsistence purposes is prohibited under 36 CFR 13.450, except in Malaspina Forelands. See section 13.1902(c) of this document.

**2.17(a)(2) Aircraft operation near docks, piers, swimming beaches and other designated areas**

No areas prohibited.

**2.17(c)(1) Conditions for removing downed aircraft**

Superseded by 43 CFR 36.11(f)(3)(ii).

**2.18(c) Snowmobiles: designated areas for use**

No areas designated for snowmachine use.

See also, 43 CFR 36.11(c) regarding snowmachine use for traditional activities and 36 CFR 13.460 for subsistence uses.

**2.19(a) Winter activities on roads and in parking areas: designated areas**

This section only applies to designated roads and parking areas open to vehicular traffic.

This section is not applicable in Wrangell-St. Elias National Park and Preserve.

**2.19(b) The towing of persons on skis, sleds, or other sliding devices by motor vehicle or snowmobile is prohibited, except in designated areas or routes**

All areas of the park are open to towing.

**2.21 Smoking**

All park offices and visitor facilities are closed to smoking.

Smoking is prohibited within 100 feet of the park fuel and aviation gas storage facility.

*These restrictions are intended to protect public safety from fire or explosion around fuel storage and dispensing facilities. Electronic cigarettes, or e-cigs, are included in the above restrictions.*

**2.22 Property: leaving property unattended for longer than 24 hours**

Superseded by 13.45.

**2.35(a)(3)(i) Alcoholic beverages: areas designated as closed to consumption**

No areas designated as closed.

**2.38(b) Fireworks: permits, designated areas, and conditions**

No areas designated for use of fireworks.

**2.51 First Amendment Demonstrations**

The following areas are designated for public assembly, meeting, gathering, demonstration, parade, or other public expression of views.

- Wrangell-St. Elias National Park/Preserve (WRST) Headquarters/Visitor Center complex. The designated location is the area under and adjacent to the bus shelter located on the south side of the visitor parking area. This is the only area designated by the superintendent for public assembly in the headquarters/visitor complex area.
- Outside the headquarters/visitor complex area, the remainder of the park and preserve are also open to assembly.

Demonstrations involving twenty-six or more individuals must have a permit issued by the superintendent.

## **2.52 Designated areas for sale and distribution of printed matter for First Amendment purposes**

- All areas of the park and preserve are open to distribution or sale of printed matter. Printed matter is limited to message-bearing textual printed material such as books, pamphlets, magazines, and leaflets, provided that it is not solely commercial advertising.
- Sale or distribution activity by 26 or more individuals is prohibited without a permit issued by the superintendent.

## **2.60(a)(3) Designated areas for grazing**

Individuals may allow authorized pack or saddle animals to graze in NPS areas without a permit for less than 14 days in a calendar year under the following conditions:

1. Grazing is in conjunction with the animals being used as pack or saddle animals in NPS areas.
2. Any feed brought in must conform to the Alaska Weed Free Forage Certification Program. For more information on this certification, contact your local Soil & Water Conservation District. The Kenny Lake Soil & Water Conservation District office phone number is 822-4479.

Grazing in support of commercial operations is only allowed under permit from the superintendent.

*These restrictions seek to lessen the impact of extended camps on vegetation.*

See also section 13.50 of this document which prohibits certain domestic animals in NPS areas.

## **2.62(b) Memorialization: designation of areas for scattering ashes**

All areas are open to scattering of ashes without a permit.

# **PART 3. BOATING AND WATER USE ACTIVITIES**

## **3.3 Permits**

No permits required at present.



### **3.7 Personal Flotation Devices: designated times and/or activities**

No designated times or activities. PFDs must be worn in accordance with 33 CFR part 175.

### **3.8(a)(2) Boating, prohibited operations: designated launching areas**

Within the boundaries of the Kendesnii Campground, the following is the designated vessel launch and recovery site:

Location on the west side of the designated Kendesnii Campground, at the end of the boat launch trail, an approximate 20 foot section on the Twin Lake shoreline (see Kendesnii campground map).

### **3.8(a)(4) Operating a vessel in excess of designated length, width, or horsepower**

No designations at present.

### **3.8(b)(3) Operating a vessel in excess of flat wake speed in designated areas**

No designated areas.

### **3.12(a) Water skiing: designated waters**

No areas designated open.

### **3.14(a) Conditions for removing sunken, grounded, or disabled vessels**

A permit is required from the Superintendent before sunken, grounded, or disabled vessels may be removed from waters within NPS administered areas except when the operator is able to remove or repair the vessel on site safely and without potential for damage to resources.

*This requirement allows the Superintendent to establish terms and conditions for salvage operations as necessary to protect resources and provide for public safety.*

### **3.16 Swimming and wading: areas designated as closed**

All areas are open to swimming and wading.

### **3.17(a) Designated swimming areas and beaches**

No designated areas.

### **3.17(c) Use or possession of flotation devices, glass containers, kites, or incompatible activities in swimming areas or beaches**

No restrictions at present.

### **3.18(a) SCUBA and underwater diving: closures and restrictions**

No closures or restrictions at present.

## **PART 4. VEHICLES AND TRAFFIC SAFETY**

### **4.10 Routes or areas designated for off-road motor vehicle use in Preserves**

See also 13.40(c) regarding the Malaspina Glacier Forelands, 13.460 for subsistence access, and 43 CFR 36.11(g) for recreational access

*This restriction minimizes the impacts of vehicle travel while allowing for access.*

**4.11(a) Load weight and size limits: permit requirements and restrictive conditions**

No restrictions at present.

**4.21(b)-(c) Speed limits: designation of a different speed limit**

The speed limit for NPS-owned portions of easements within the Kennecott Mines National Historic Landmark is 10 miles per hour. Operating any vehicle in excess of this speed limit is prohibited.

**4.30(a) Routes designated as open to bicycles**

Superseded by 43 CFR 36.11(e).

**4.30(d)(1) Wilderness closed to bicycle use**

Superseded by 43 CFR 36.11(e).

**4.30(i)(1) Designated roads, parking areas, and trails open to electric bicycles, or specific classes of electric bicycles**

- All park roads, parking areas and the following trails, located outside of designated wilderness and outside of the Kennecott Mines National Historic Landmark, are open to the use of electric bicycles.

Trail Creek Trail  
Lost Creek Trail  
Soda Lake Trail  
Nugget Creek Trail

**4.30(i)(7) Electric bicycle use restrictions/conditions**

No additional restrictions or conditions in areas designated as open to electric bicycle use. See 36 CFR 4.30(i) for more information.

**4.31 Hitchhiking: designated areas**

All areas are open to hitchhiking.

**PART 5. COMMERCIAL AND PRIVATE OPERATIONS**

**5.7 Construction of buildings, roads, trails, airstrips, or other facilities**

Maintenance of established landing strips utilizing non-motorized hand tools is not considered construction or repair and no permit is required.

## PART 13. ALASKA REGULATIONS

### 13.25(a) Closures and restrictions to camping

#### Donoho Basin

As used in this section, Donoho Basin is defined as the deglaciaded land found between the Kennicott and Root glaciers south of an east to west line that crosses Donoho Peak. This line is the dividing line between park and preserve and designated wilderness and non-wilderness. A map depicting the boundaries of Donoho Basin is attached.

As used in reference to Donoho Basin, guided groups are all parties operating under a commercial use authorization from the NPS.

As used in reference to Donoho Basin, unguided groups are all parties not operating under a commercial use authorization from the NPS.

As used in reference to Donoho Basin, associated groups are those lead by the 1) same company, 2) partnering companies, or 3) partnering organizations.

- From May 15 through September 15, unguided groups may not exceed 12 individuals at Donoho Basin.
- From May 15 through September 15, the minimum camp distance between associated groups in Donoho Basin is ½ mile.
- From May 15 through September 15, all groups (guided or unguided) of 8 or more individuals must register to camp at Donoho Basin. Registration can be done online, over the telephone, or in person at the NPS visitor center.

#### McCarthy Road Information Station

Camping is restricted at and adjacent to the information kiosk and spur road on the north side of the McCarthy Road at mile 59. Camping is prohibited from April 15 through October 15.

*The restriction is necessary because of the danger presented to the camping public by human habituated bears. The campground is located in a bear corridor and adjacent to a large soap berry patch. Bear research has confirmed that bear encounters are unavoidable and that the bears tend to be accustomed to humans and to associate humans' with food. The risk to campers from both black and brown bears is unacceptably high. Private fee campgrounds are available in the immediate area.*

#### Slana Ranger Station

*Camping is prohibited in the Slana Ranger Station parking area. A map depicting the boundaries of this closure is attached.*

The reasons for this restriction are as follows:

- The Slana Ranger Station parking area is not designed or intended for camping.

- Camping in this parking area has contributed to sanitation issues with human waste and refuse being left behind by campers. This improper disposal of human waste and refuse is not only a violation of 36 CFR 2.14 but also creates a health and safety hazard for visitors and NPS employees.
- Public restrooms and refuse receptacles are located inside the ranger station, which is closed and locked after business hours.
- Parking space is limited and intended for those visiting the ranger station during normal business hours.
- Other drive-in camping opportunities exist nearby. The Slana area includes multiple public (state and federal) campgrounds as well as private campgrounds. Information about these campgrounds is readily available online or from NPS visitor center staff.

The reasons less restrictive measures will not be effective are as follows:

- Campers often arrive to the Slana Ranger Station after business hours and do not have the opportunity to speak with NPS staff before parking and camping for the night.
- Signage explaining that the parking area is closed to camping is necessary to address the issues explained above. Information about alternative camping areas nearby is available on the deck of the ranger station for afterhours visitors.
- A camping closure for this location is necessary to meet the management objectives of the area and is only enforceable if enacted in accordance with applicable regulation.

### **13.25(b) Site time limits: authorization to exceed 14-day limit at one location**

No general exceptions at present.

### **13.25(c) Designated campgrounds: restrictions, terms, and conditions**

The Kendesnii Campground and the Jumbo Creek Campground are the only designated campgrounds in the park/preserve.

Discharging a firearm is prohibited May 1 through September 30 in the Kendesnii Campground and in the Jumbo Creek Campground unless required for defense of life and property.

As used in this section, Kendesnii Campground is defined as the designated land beginning at approximately mile 28.3 on Nabesna Road, following an eastern direction on the Nabesna Road to mile 28.5 (at private property boundary), then south approximately 1000 feet (along private property boundary), then west 600 feet to Twin Lake and following north along the shoreline of lake, extending north from the Peninsula of the lake -at the edge of the campground, north to Nabesna Road at mile 28.3. The total acreage for Kendesnii Campground is at approximately 19 acres. Campground entrance from Nabesna Road located at N 62°31'49.37" W 143° 15' 29.47" (DMS NAD83 Alaska Albers). This area defined is within the park. A map depicting the boundaries of Kendesnii Campground is attached.

As used in this section, Jumbo Creek Campground in the Kennecott Mines National Historic Landmark is defined as the designated land bounded on the south by Jumbo

Creek, on the west by Kennicott Glacier, on the north by Amazon Creek/Gulch, and on the east by the 2150' elevation contour. The total acreage for Jumbo Creek Campground is approximately 50 acres. Campground access is from the Root Glacier Trail where it crosses Jumbo Creek at 61 deg 30 min 11.378 sec N latitude, 142 deg 53 min 49.978 sec W longitude. This area is located within the preserve. A map depicting the boundaries of Jumbo Creek Campground is attached.

See also 13.1904(d), 13.1906(b).

### **13.26 Picnicking-areas where prohibited or otherwise restricted**

No restrictions at present.

### **13.35(d) Collection of dead standing wood: areas designated as open and conditions for collection**

No designated areas at present.

### **13.35(f)(1) Natural features: size and quantity restrictions for collection**

The collection or gathering of mushrooms for personal use is limited to two 5-gallon containers of whole, fresh mushrooms per person, per day.

### **13.35(f)(2) Natural features: closures or restrictions due to adverse impacts**

No closures or restrictions at present.

### **13.45(b)(1)-(6) Exceptions to unattended or abandoned property**

Superintendent authorizations for exceptions for unattended or abandoned property are made on a case by case basis. Contact park headquarters for more information.

### **13.45(c) Designated areas where personal property may not be left unattended for any time period, limits on amounts and types, manner in which property is stored**

No designated areas.

## **13.50 Closure and restrictions**

### Administrative Use Only Facilities

The Commissioner's Cabin and Women's Jail Cabin at Chisana, the Operations Center and Cook Cabin at May Creek, the Freed Property research camp in Slana, the Jack Lake Airstrip Administrative Site and, between April 1<sup>st</sup> and November 1<sup>st</sup>, the NPS employee housing areas in Copper Center, Slana, McCarthy and Kennecott are restricted to administrative use, and are not available to the general public. This public use restriction applies to the land immediately surrounding an employee housing areas, including any closely associated buildings, structures and parking areas, but excluding areas beyond. Restricted areas will be posted with signs as "Private" or "Administrative Use Only." See also 13.1906 for the Headquarters/Visitor Center Developed Area.

The Jack Lake Airstrip Administrative Site is described as:

An area less than one acre, approximately 0.71 acres in size, that extends from a federal aviation easement on private lands that covers the active runway for the Jack Lake Airstrip.

From the private property boundary, the administrative site closure extends approximately 300 feet in length and 100 feet in width along the same centerline for the federal aviation easement.

The legal description for the centerline of the airstrip and federal aviation easement on private lands is described as follows:

Beginning at corner 1 USS 5214; thence approximately S44°10'W, 520 feet to the intersection of the centerline of an existing airstrip with the shoreline of Jack Lake, being the TRUE POINT OF BEGINNING; thence approximately S89°W, 1300 feet to its intersect with the common boundary of Parcel One (1) and Parcel Two (2) of said Warranty Deed.

The reason for this restriction is as follows:

The NPS acquired a parcel containing the area described above, for the purposes of aviation support to the park unit. This approximately 30-acre property was purchased in 2016 to augment operations of the park, per the General Management Plan of 1986 and the park's Aviation Management Plan guidance on safe operations. This location supports the park's base aviation operations in Gulkana by providing a location with road and potential water access, to support aviation operations at a proven key location in the park unit where weather and fuel availability are factors in the safe operations on the north to northeast areas of the unit. We expect this location to be used intermittently and generally with low impact use.

The parcel does not have access to Jack Lake. As part of the acquisition, the NPS obtained an easement for use of an airstrip that largely exists on privately held land. The acquired easement is 100' wide and approximately 1,300 feet long and terminates at the ordinary high-water line on Jack Lake. The NPS is subject to the conditions of the easement, which state:

*"The easement does not include the right for use of the airstrip by the general public or the right for use of the airstrip for private commercial operations..."*

The reason a less restrictive method will not be effective is as follows:

Jack Lake is located adjacent to an area of regular public use. Appropriate signage along with the ability to legally restrict public use near the administrative area is necessary to meet the intent of this restriction.

Filming, still photography, and audio recording activity may require a permit, consistent with 54 U.S.C. 100905.

- Filming, still photography, and audio recording activity that occurs in closed areas, requires exclusive use of a site or area, or involves a set or staging equipment other than handheld equipment (such as a tripod, monopod, and handheld lighting equipment) requires a permit, unless the activity is affiliated with an activity or event that has been allowed under a written authorization, such as a special use permit.
- Filming, still photography, and audio recording that involves more than eight individuals requires a permit, unless the NPS has specifically notified an individual or group that a permit is not required, or if the activity is affiliated with an activity or event that has been allowed under a written authorization, such as a special use permit.
- If a permit is required for the reasons stated above, or if the NPS otherwise determines and then notifies an individual or group that a permit is required for a filming, still photography, or audio recording activity, then engaging in that activity without a permit is prohibited. Violating a term or condition of a permit issued by the NPS for a filming, still photography, or audio recording activity is prohibited, and may result in the suspension or revocation of the permit, in addition to any penalties that may apply under 36 CFR 1.3.

*Federal law at 54 U.S.C. 100905 states that permits and fees are not required for filming, still photography, or audio recording in park areas if certain requirements are met. These requirements address various topics, including, but not limited to, group size, location, equipment, potential impacts to resources and visitors, and the likelihood that the NPS will incur related administrative costs. If any of these requirements are not met, the law allows the Secretary of the Interior, acting through the NPS, to require a permit for the subject activity. Permit requirements are imposed by the superintendent under discretionary authority provided by 36 CFR 13.50, which allows the superintendent to restrict activities in NPS areas in Alaska. The general regulations for permits in 36 CFR 1.6 and 13.55 do not apply to permits issued for filming, still photography, and audio recording, which instead are governed by the statutory provisions in 54 U.S.C. 100905. The imposition of permit requirements, on a case-by-case basis, for filming, still photography, or audio recording does not require rulemaking under 36 CFR 13.50(c). Requiring a permit with reasonable terms and conditions in accordance with statutory requirements at 54 U.S.C. 100905 will not result in a significant alteration in the public use pattern of the area, will not adversely affect the area's natural, aesthetic, scenic or cultural values, or require a long-term or significant modification in the resource management objectives of the area, because the permit requirement is limited in time and scope to the specific activities authorized by the permit, which contains terms and conditions that protect the values, resources, and visitors of the area.*

### Unmanned Aircraft

Launching, landing, or operating an uncrewed or remotely piloted aircraft from or on lands and waters administered by the National Park Service within the boundaries of Wrangell-St. Elias National Park and Preserve is prohibited except as approved in writing by the superintendent.

*This restriction is required for the protection of wildlife, sound scape, Wilderness character, and visitor enjoyment. This restriction does not affect the primary jurisdiction of the Federal Aviation Administration over the National Airspace System.*

#### Domestic Goats and Sheep

Use or possession of domestic goats or sheep within NPS administered areas is prohibited.

#### Llamas, Alpacas, and other Members of the Camelidae or Bovidae Family

Use or possession of llamas, alpacas, or any other domestic animal of the Camelidae or Bovidae Family within NPS administered areas is prohibited except as pack animals in accordance with written authorization from the superintendent. Use or possession of domestic goats or sheep is prohibited, and written authorization is not available.

#### Cave Entry

In order to prevent spreading White-Nose Syndrome (WNS) to bats, any person entering a cave or any part or passage of any cave, except glacier ice caves, shall

1. Ensure all gear, equipment, and clothing are not contaminated with the fungus associated with WNS by either
  - a). Utilizing only gear, equipment, and clothing that has not been used to enter caves outside of Wrangell-St. Elias National Park and Preserve (WRST), **or**
  - b). utilizing only gear, equipment, and clothing that has been entirely disinfected in accordance with the latest approved protocols which are found at <http://www.fws.gov/WhiteNoseSyndrome/caves.html>. These procedures are also available at NPS visitor centers
2. Contact WRST headquarters at 907-822-5234 at least 72 hours prior to entering a cave

#### **13.122 Established conditions for removal of cabin for which a cabin permit has been denied, expired, or revoked**

No conditions established at present (may require access permit).

#### **13.160 Designated existing cabins, shelters or temporary facilities that may be shared for subsistence uses without a permit**

No designations at present.

#### **13.166 Established conditions and standards governing the use and construction of temporary structures and facilities for subsistence purposes, published annually**

No conditions or standards established at present.

#### **13.170 Designated cabins or other structures for general public use**

Reservations are required at the following public use cabins:

- Esker Stream: Reservations may be made in advance year-round through [www.recreation.gov](http://www.recreation.gov)
- Caribou Creek Cabin: Reservations may be made in advance year-round through the headquarters Visitor Center by emailing [wrst\\_info@nps.gov](mailto:wrst_info@nps.gov)
- Viking Lodge: Reservations may be made in advance year-round through the headquarters Visitor Center by emailing [wrst\\_info@nps.gov](mailto:wrst_info@nps.gov)
- Nugget Creek: Reservations may be made in advance year-round through the headquarters Visitor Center by emailing [wrst\\_info@nps.gov](mailto:wrst_info@nps.gov)



Other cabins available for public use include:

- May Creek
- Jakes Bar
- Peavine 1
- Peavine 2
- Orange Hill
- Too Much Johnson
- Solo Mountain
- Chelle Lake
- Huberts Landing
- Glacier Creek

### **13.172 Established conditions and allocation system to manage the use of designated public use cabins**

The following conditions apply to use of all public use cabins:

- Use of any single designated public cabin shall not exceed seven days in a 30-day period without authorization from the Superintendent.
- Leaving personal property at a cabin is prohibited. Emergency food rations may be left inside a cabin but must be secured within an approved Bear Resistant Container as defined by this compendium in 2.10(d).

Other than Viking Lodge, Esker Stream, Caribou Creek, and Nugget Creek cabins listed may be occupied on a first come, first serve basis.

### **13.188(b) Established conditions for removal of temporary facility used in excess of 14 days**

Individuals must remove facility, all personal property, and return the site to its natural condition.

*These conditions are intended to protect the park from impacts to vegetation and soil and to ensure that personal items are not left in the park.*

### **13.460 Closures or restrictions to the use of snowmobiles, motorboats, dog teams, and other means of surface transportation traditionally employed by local rural residents engaged in subsistence uses**

The following areas are closed to ORV use except during periods of adequate snow cover. Adequate snow cover is defined snow of sufficient depth, generally 6-12 inches or more, or a combination of snow and frost depth sufficient to protect the underlying vegetation and soil.

a. The old Soda Lake Trail as shown on the attached map.

- *This closure does not affect any ANILCA 1110(b) rights by the landowner of Lots 1 and 2 U.S. Survey 12389 and their invited guests to continue using motorized vehicles along the existing trail for access to their property at Big Grayling Lake.*

- b. A trail which branches off from the Tanada Lake Trail near the outlet of Tanada Lake and continues southwest towards Copper Lake as shown on the attached map. This closure includes the area 1,000 feet either side of this trail.
- c. All portions of Wrangell-St. Elias National Park and Preserve south of the Bagley Ice Field and Seward Glacier, extending east to the western margin of the Hubbard Glacier.

See also 36 CFR 2.16, 2.17, 2.18, 3.6, 4.10, 4.30, 13.40(c), 13.50, and 43 CFR 36.11(c)-(e).

**13.485(a)(1) Permit specifications for harvesting standing timber greater than 3" diameter for subsistence purposes (house logs & firewood)**

See policy statement on subsistence green wood harvest. See 13.485(b) for subsistence firewood harvest of dead or downed timber.

**13.485(a)(2) Restrictions on cutting of timber less than 3" in diameter for subsistence purposes**

No restrictions at present.

**WRANGELL-ST. ELIAS SPECIAL REGULATIONS**

**13.1902(b) Aircraft access for residents of Yakutat to Malaspina Forelands**

For the purposes of this exemption only, the Malaspina Forelands Area is defined as all portions of Wrangell-St. Elias National Park and Preserve south of the Bagley Ice Field and Seward Glacier, extending east to the western margin of the Hubbard Glacier.

*These areas are available for aircraft access under a permit issued by the Superintendent for residents of Yakutat that are Federally qualified for subsistence in Wrangell-St. Elias National Park and Preserve.*

**13.1910 Kennecott Mines National Historic Landmark and developed areas: closures and restrictions**

Discharging a firearm on federal lands from May 1 through September 30 within the mill site as defined in 13.1904(d) is prohibited unless required for defense of life or property.

**43 CFR, PART 36 TRANSPORTATION AND UTILITY SYSTEMS (Access Regulations)**

**36.11(c) Temporary closures to the use of snowmachines for traditional activities**

No closures at present.

See also 2.18.

**36.11(d) Temporary closures to the use of motorboats**

No closures at present.

See also 3.3, 3.6.

**36.11(e) Temporary closures to the use of non-motorized surface transportation**

See also 2.16, 3.3, 3.6, 13.50.

### **36.11(f)(1) Temporary closures to landing fixed-wing aircraft**

No closures at present.

### **36.11(f)(3)(ii) Established procedure for salvaging and removing downed aircraft**

A permit is required from the Superintendent before downed aircraft may be salvaged and removed from the park; violation of the terms and conditions of the permit is prohibited.

*This requirement allows the Superintendent to establish terms and conditions for salvage operations as necessary to protect resources, provide for public safety, and minimize impacts on visitors.*

### **36.11(g)(2) Use of off-road vehicles (ORV) on existing trails**

ORVs may be operated on existing trails pursuant to a permit issued under 43 CFR 36.11(g)(2). Existing trails where ORVs may be operated are shown on a map available at park headquarters in Copper Center or the Slana Ranger Station. Pneumatic tired vehicles and tracked vehicles are authorized. Recreational ORVs may not be operated in designated wilderness. These designations and restrictions do not apply to subsistence use of ORVs traditionally used for subsistence activities.

*This restriction minimizes impacts of vehicle travel in the park while allowing for access.*

See also 13.40(c) regarding the Malaspina Glacier Foreland and 13.460 for subsistence access.

## **Wrangell-St. Elias National Park and Preserve Closed Circuit Television (CCTV) Monitoring Public Notice**

### **CCTV Policy Statement**

In accordance with National Park Service Law Enforcement Reference Manual 9 (RM-9), notice is hereby given that Wrangell-St. Elias National Park and Preserve uses Closed Circuit Television (CCTV) security camera monitoring.

The park's use of Closed Circuit Television (CCTV) for law enforcement and security purposes will only be to visually monitor public park areas and public activities where no constitutionally protected reasonable expectation of privacy exists. Such CCTV use - which will have adequate privacy and First Amendment safeguards - will be to help ensure public safety and security; facilitate the detection, investigation, prevention, and deterrence of terrorist attack and crime; help ensure the safety of citizens and officers; help assist in the proper allocation and deployment of law enforcement and public safety resources; and help facilitate the protection of the innocent and the apprehension and prosecution of criminals. (RM-9, 26.1)

This policy does not restrict the official use of CCTV in government administrative areas, including administrative buildings, jail holding facilities (RM-9, 26.3.7), revenue collection sites, etc., where the government may record/monitor its facilities. For example, the government may perform unrestricted video/audio recording at revenue collection points (entrance stations, visitor center counters, etc.). This policy does not restrict the use of an Audio/Visual Recording Device (AVRD) in patrol vehicles or officer-worn recording devices used by commissioned rangers. (RM-9, 26.1)

Operation of CCTV cameras, maintenance of recorded images and use of recorded images will be in accordance with NPS and Department policy and applicable laws and regulations. (RM-9, 26.1-26.4) No person will be targeted or monitored merely because of race, religion, gender, sex, disability, national origin, or political affiliation or views. (RM-9, 26.4.2)

Nothing in this policy statement is intended to create any rights, privileges, or benefits not otherwise recognized by law.

*Please contact Wrangell-St. Elias National Park and Preserve, Copper Center, Alaska at (907) 822-7210 should you wish to comment about the park's usage of CCTV camera monitoring.*

## COMPENDIUM MAPS

### Contents

Kennecott Mill Site

McCarthy Road Camping Closure - Mile 59

ORV Trail Closures

Donoho Basin

Subsistence Aircraft Exemption

Kendesnii Campground

Soda Lake Trail Closure

Jumbo Campground

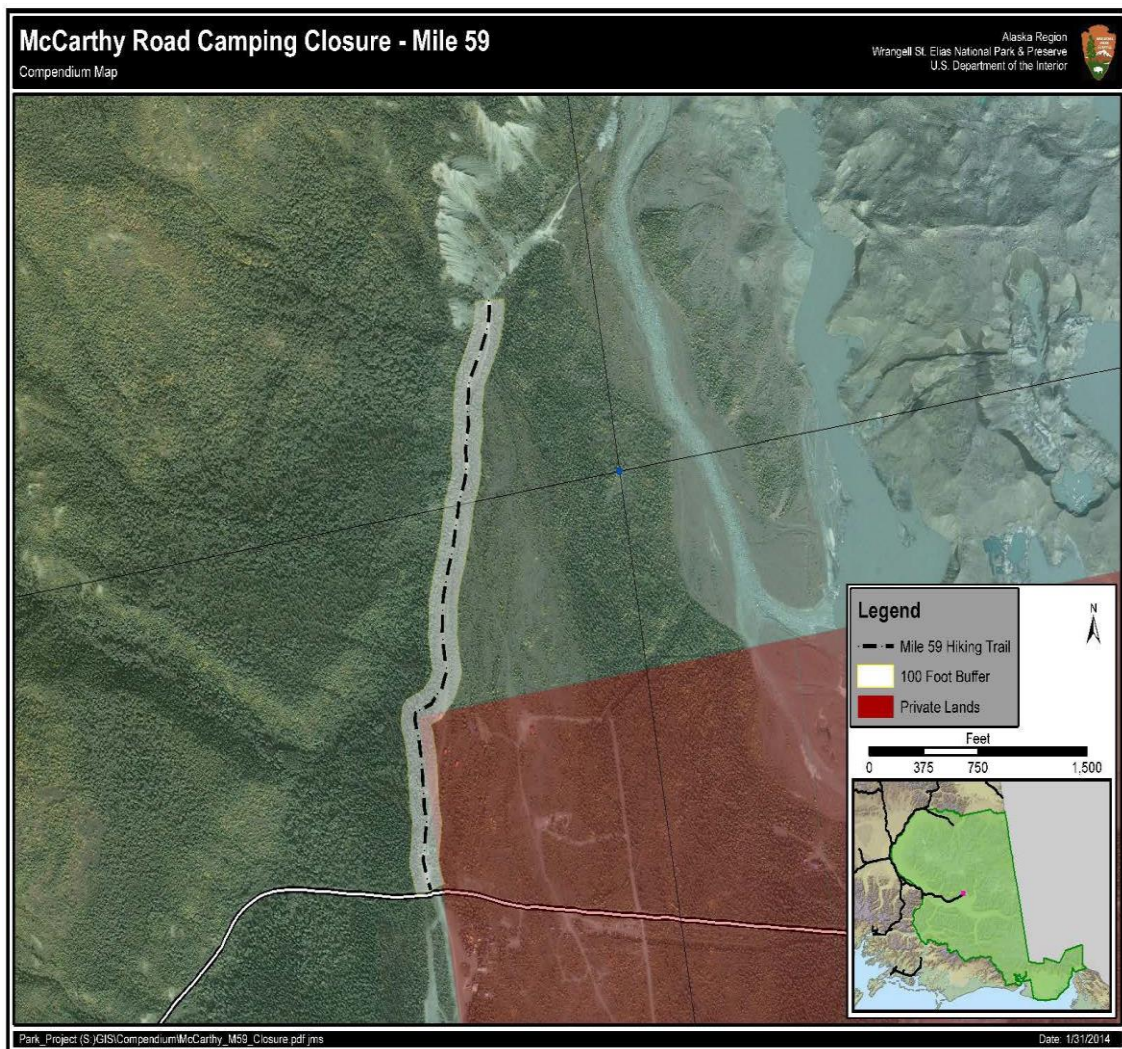
Jack Lake Airstrip Administrative Site Closure

Slana Ranger Station Camping Closure and Administrative Use Only Areas

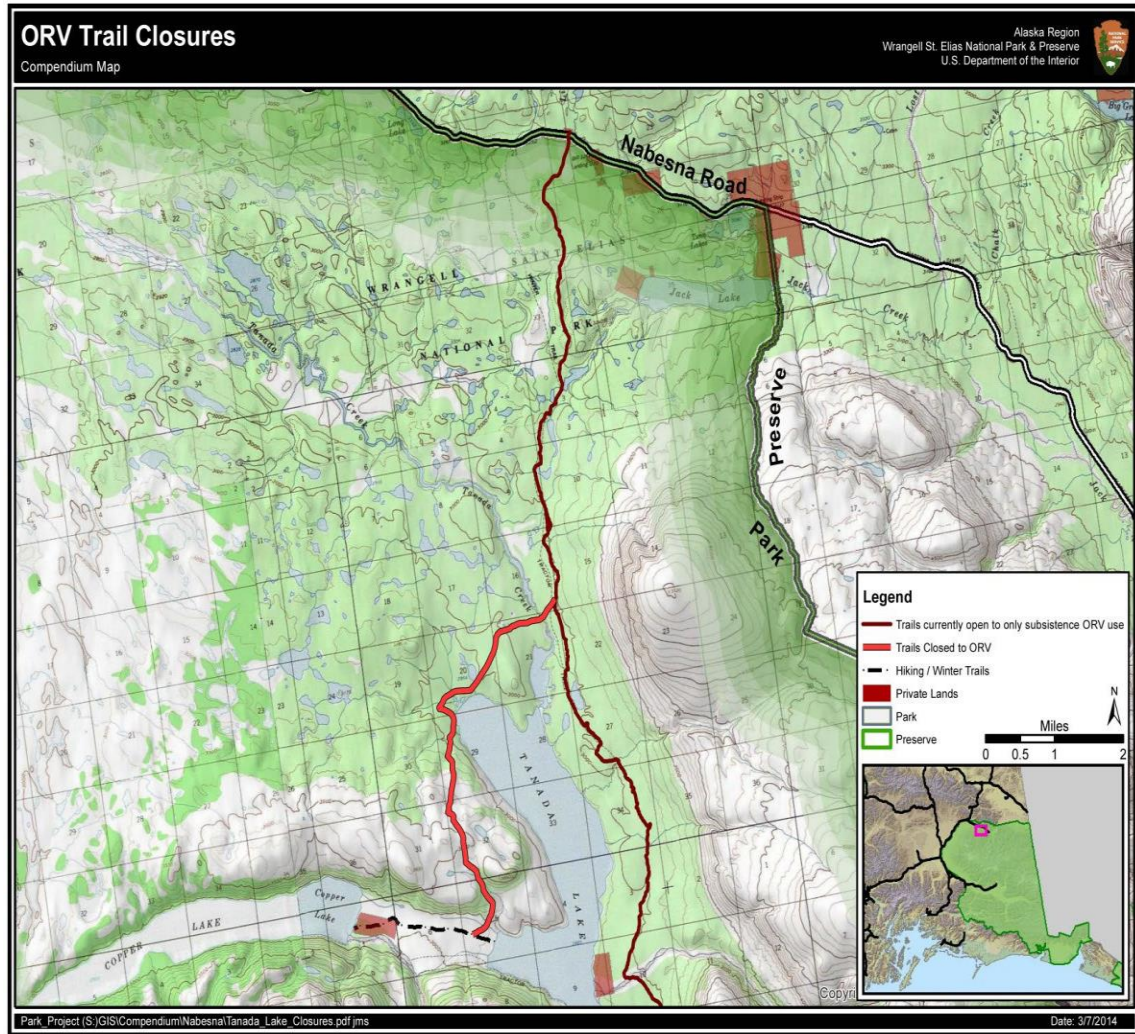
First Amendment Area Map







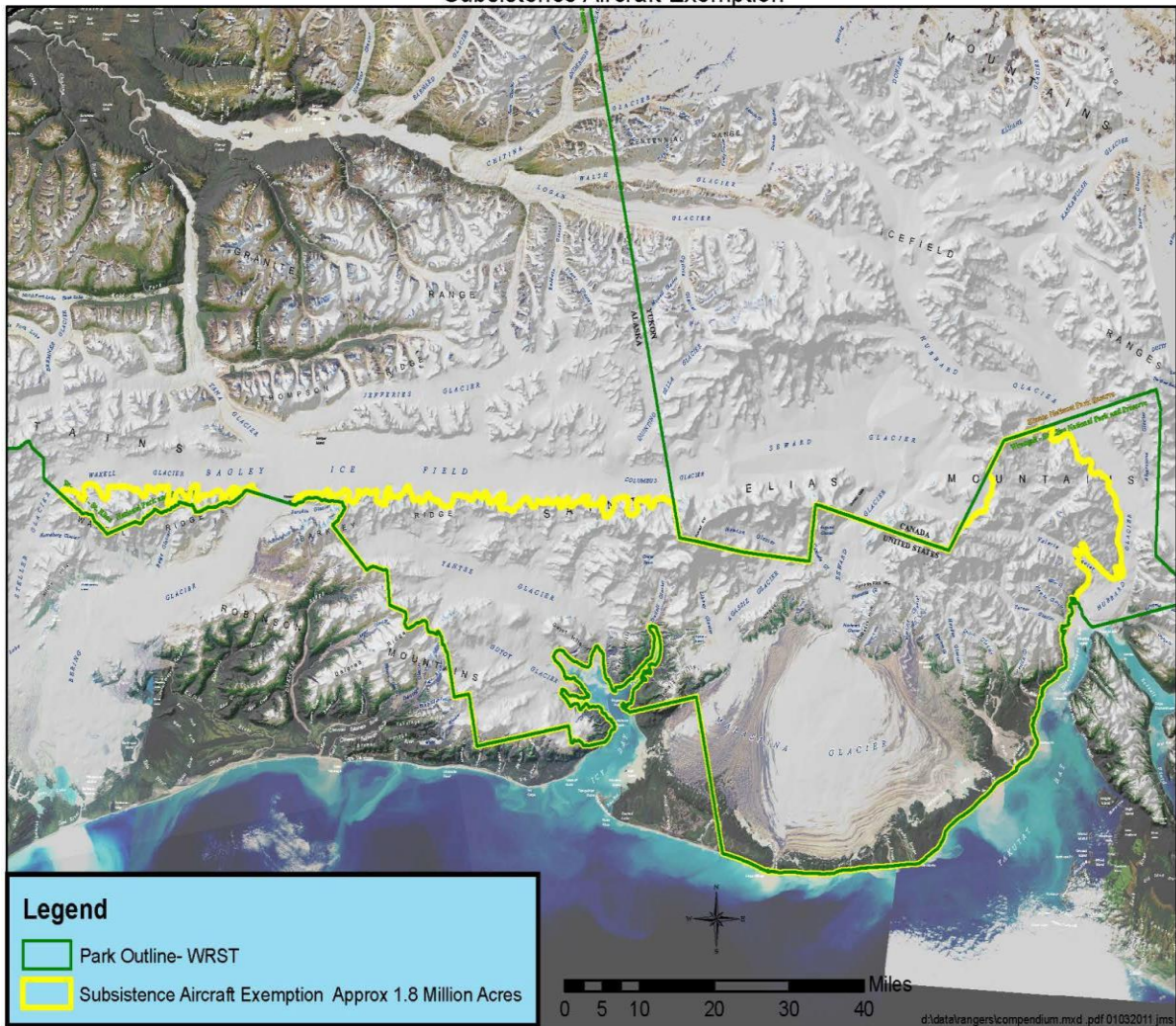
## Tanada Lake and Copper Lake Off-Road Vehicle Trails





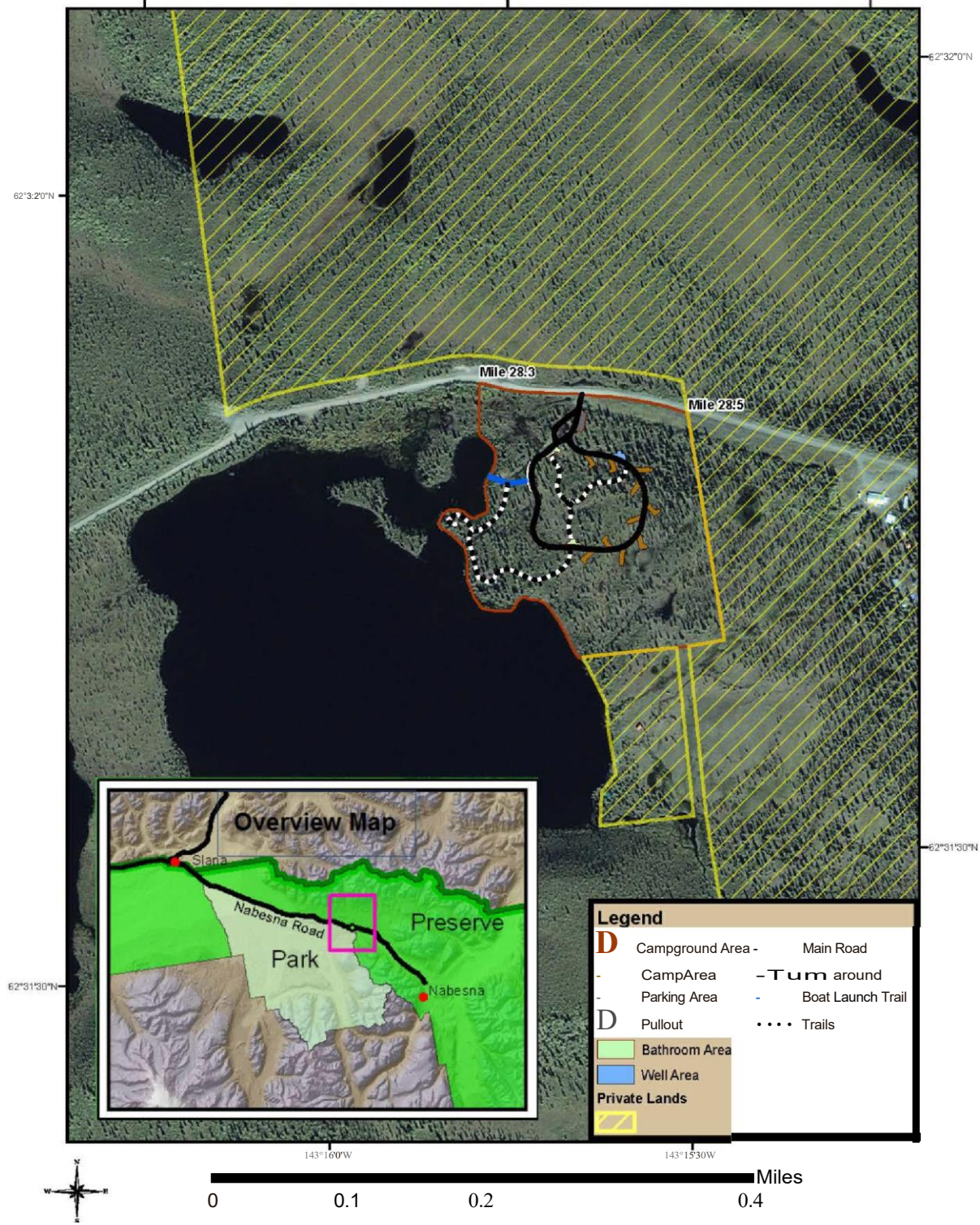


## Subsistence Aircraft Exemption





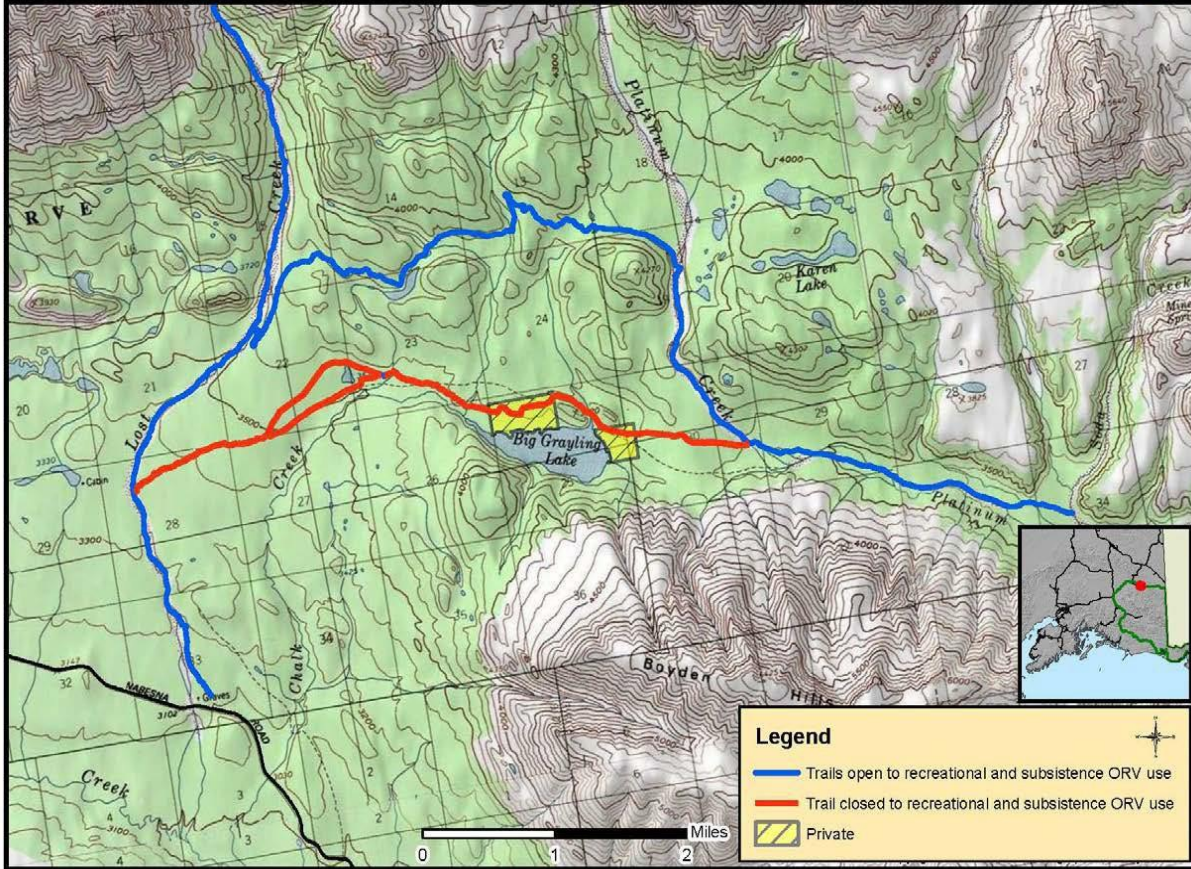
# Kendesnii Campground



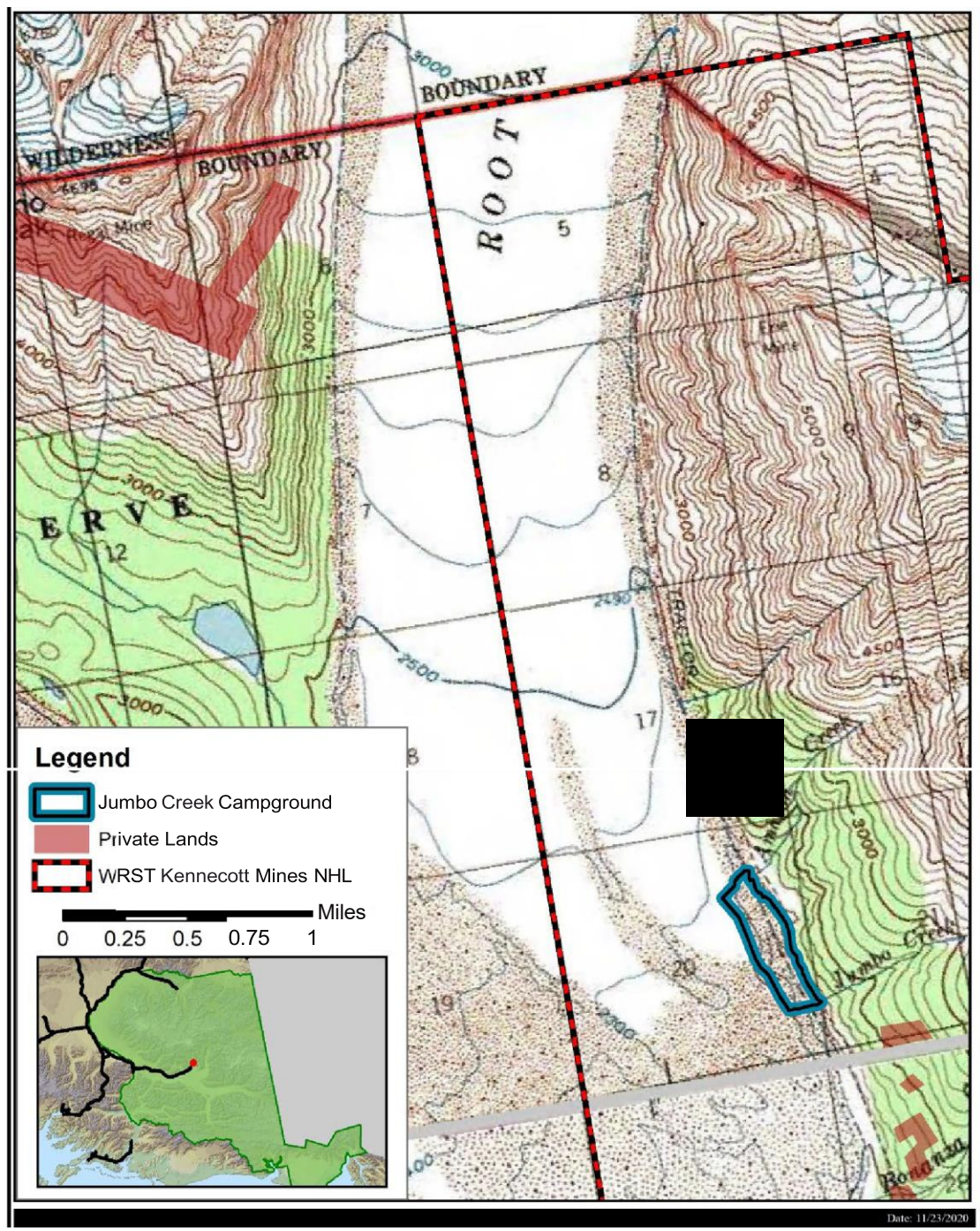


# Soda Lake Trail Closure

Wrangell St. Elias  
National Park & Preserve  
GIS

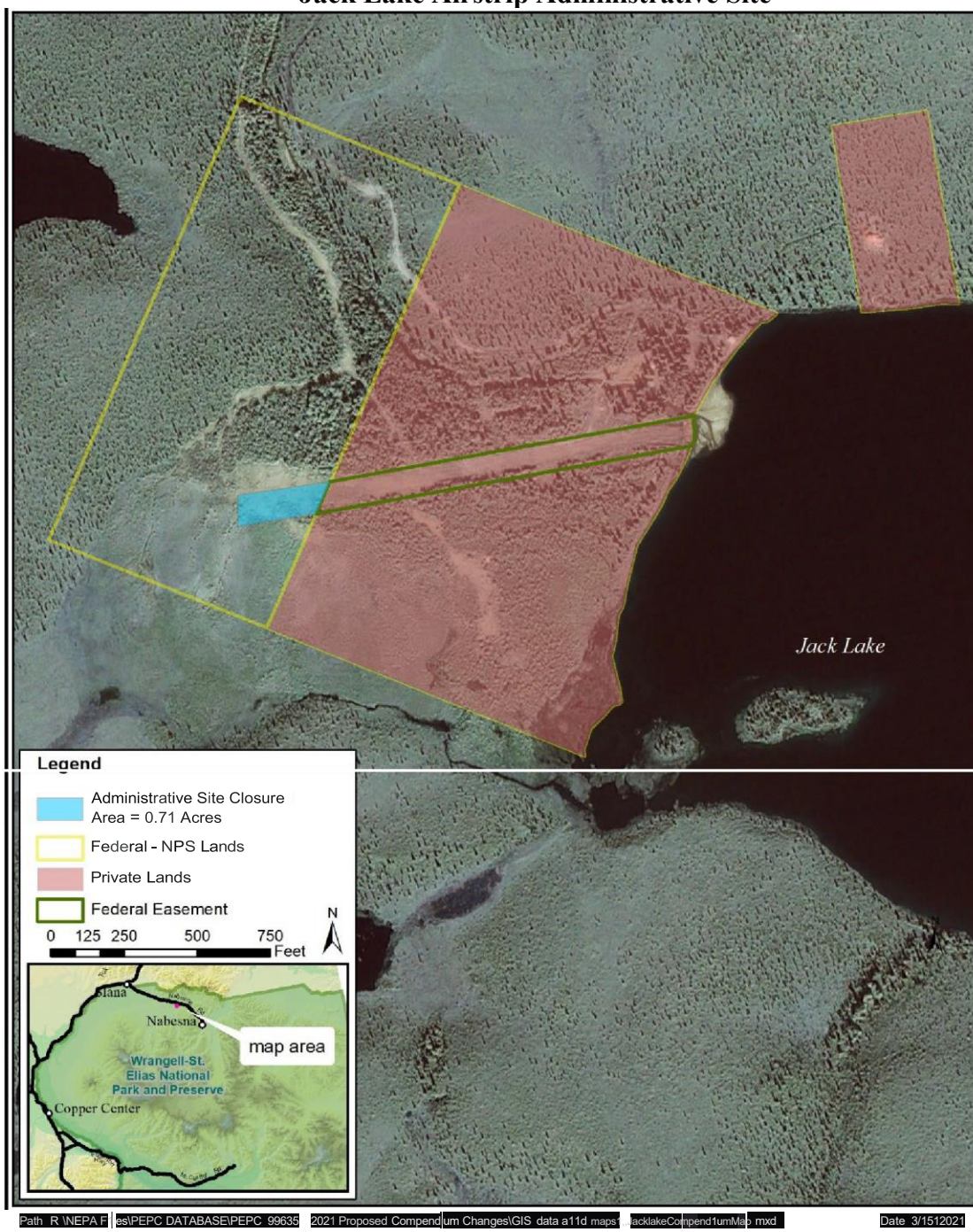




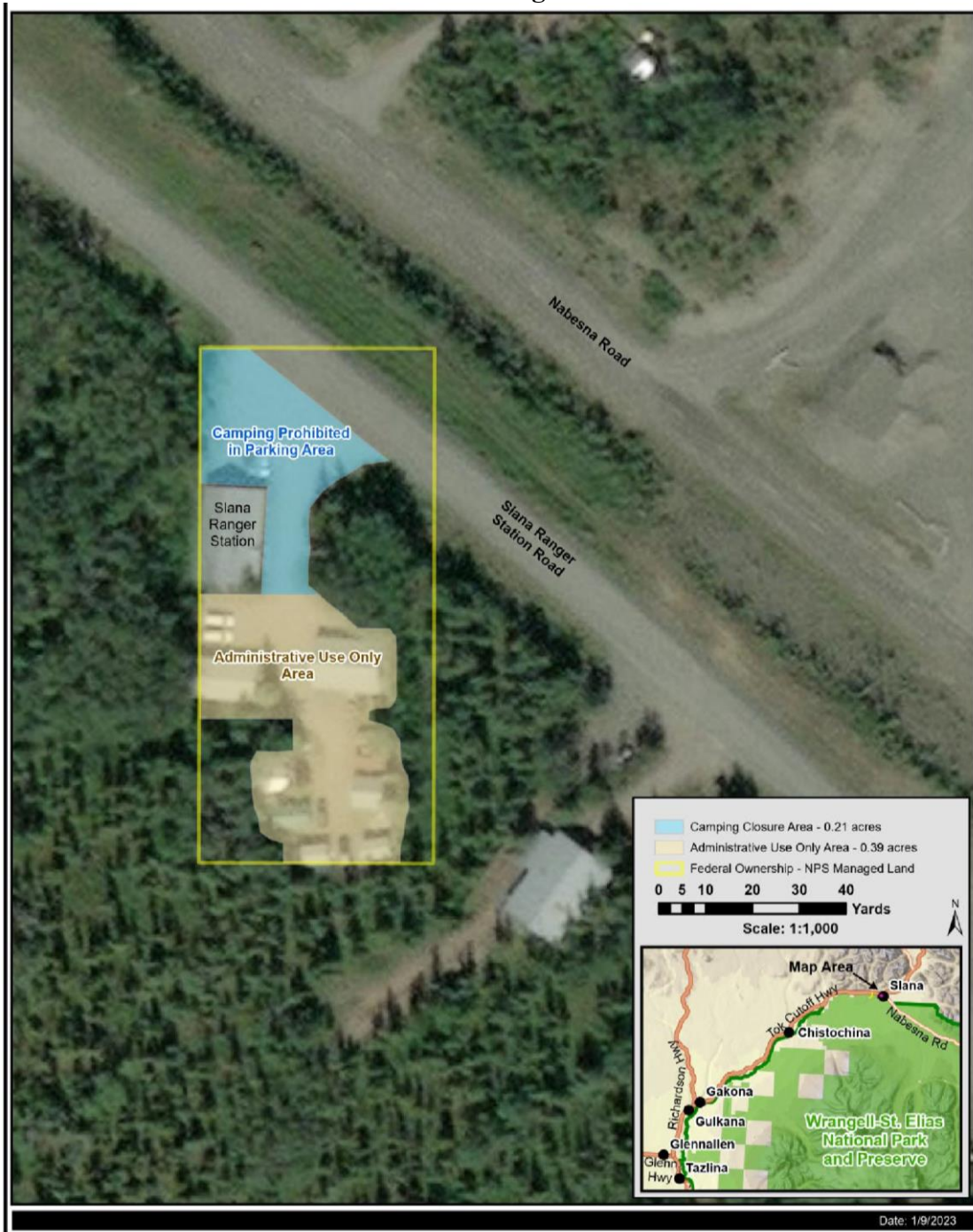




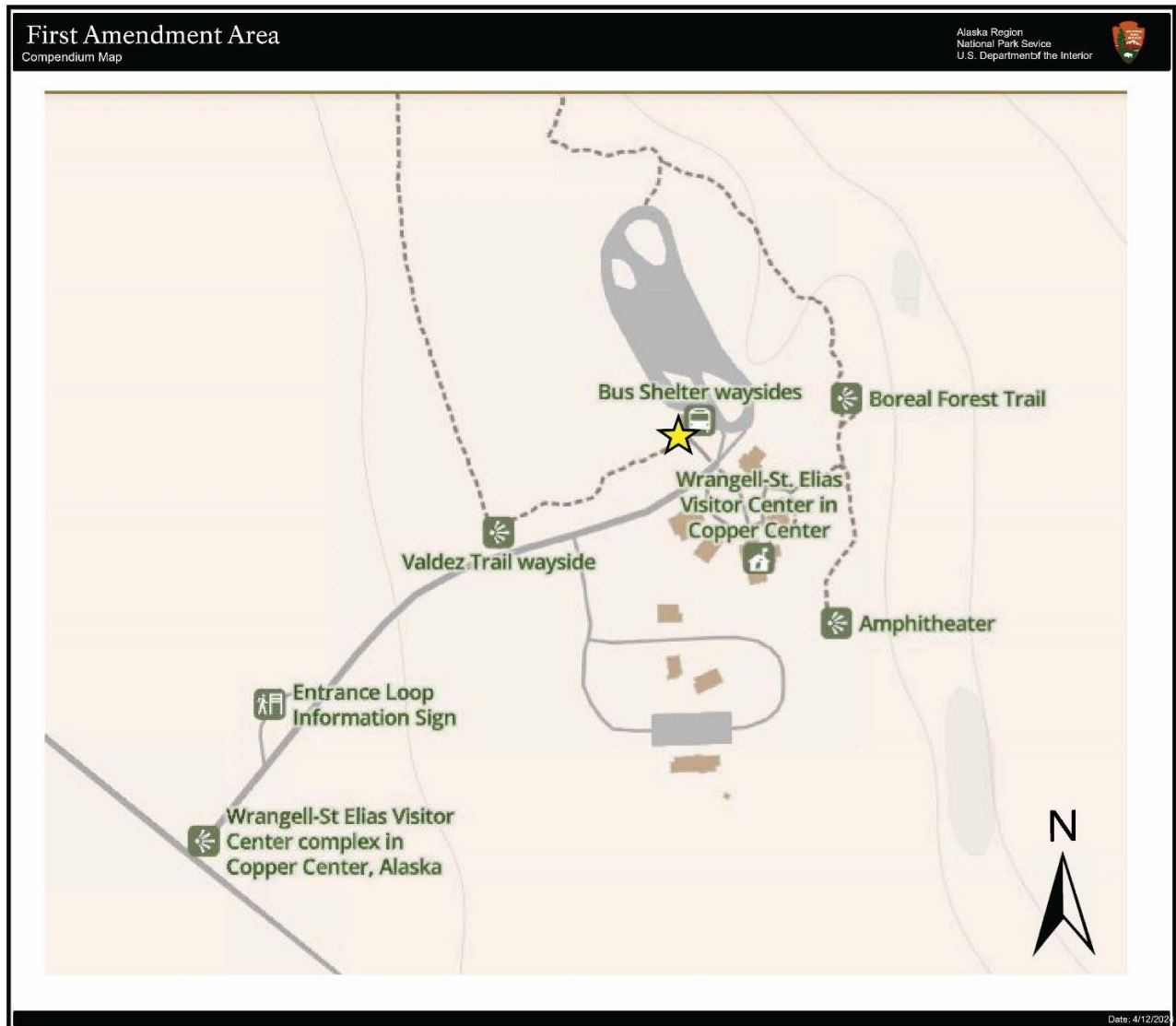
## Jack Lake Airstrip Administrative Site



## Slana Ranger Station







\* The First Amendment Area at the HQ campus Bus Shelter is depicted by a yellow star.