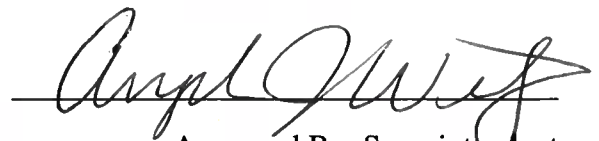





**Klondike Gold Rush National Historical Park
Superintendent's Compendium
March 2023**


Approved By: Superintendent


Recommended By: Chief Ranger

Signatures on File

Klondike Gold Rush National Historical Park Superintendent's Compendium

National Park Service (NPS) regulations applicable to the protection and equitable public use of units of the National Park System grant specified authorities to a park superintendent to allow or restrict certain activities.

36 CFR § 1.7(4)(b) – "...the superintendent shall compile in writing all the designations, closures, permit requirements and other restrictions imposed under discretionary authority. This compilation shall be updated annually and made available to the public upon request."

NPS regulations are found in Titles 36 and 43 of the Code of Federal Regulations (CFR) and created under authority and responsibility granted the Secretary of Interior in Titles 16 and 54 of the United States Code. The following compendium comprises a listing of NPS regulations where the superintendent has exercised discretionary authority to make designations or impose public use restrictions or conditions in park areas. The applicability and scope of the compendium is articulated in 36 CFR Sections 1.2 and 13.2, and 43 CFR Section 36.1.

A complete and accurate picture of regulations governing use and protection of Klondike Gold Rush National Historical Park can only be gained by viewing this compendium in context with the full body of applicable regulations found in Titles 36 and 43 CFR. That is, unless otherwise stated, the regulatory provisions herein apply in addition to the requirements contained in 36 and 43 CFR, since the compendium only addresses restrictions imposed under the discretionary authority of the superintendent, or regulations which authorize special designations, closures, or other use limits. The use of this compendium, in conjunction with park brochures, maps, signs, and other media will provide a clear understanding of park rules and regulations for both the National Park Service employees and park visitors. Your comments and suggestions are welcome.

Send Comments To:

Superintendent
Klondike Gold Rush National Historical Park
P.O. Box 517
Skagway, AK 99840

TABLE OF CONTENTS

<u>CFR SECTION</u>	<u>TITLE</u>	<u>PAGE</u>
	Introduction	2
I. 36 CFR §1.6	Activities That Require a Permit	4
II. 36CFR, Part 2	Resource Protection, Public Use and Recreation	5
III. 36CFR, Part 3	Boating and Water Use Activities	8
IV. 36CFR, Part 4	Vehicles and Traffic Safety	8
V. 36CFR, Part 13	Alaska Regulations	9
VI. 36CFR, Part 13.1402	Park Special Regulations	11
VII. 43 CFR, Part 36	Transportation and Utility Systems	12
Appendix 1.a	Skagway Demonstration Site	13
Appendix 1.b	Dyea Demonstration Site	14
Appendix 2	Dyea Historic Townsite Boundary	15

I. TITLE 36 CODE OF FEDERAL REGULATIONS PART 1. GENERAL PROVISIONS 1.6(f) Compilation of activities requiring a permit

- Collecting research specimens, 2.5
- Operating a power saw in developed areas, 2.12(a)(2)
- Operating a portable motor or engine in undeveloped areas, 2.12(a)(3)
- Operating a public address system, 2.12(a)(4)
- Air delivery, 2.17(a)(3)
- Noncommercial soliciting, 2.37
- Using, possessing, storing, or transporting explosives, blasting agents, or explosive materials, 2.38(a)
- Using or possessing fireworks and firecrackers, 2.38(b)
- Special events, 2.50(a)
- First Amendment Demonstrations involving 26 or more persons, 2.51
- Sale and distribution of printed matter for First Amendment purposes by groups of 26 or more persons, 2.52
- Grazing, 2.60(a)(1), (2)
- Residing on federal lands, 2.61(a)
- Installing a monument or other commemorative installation, 2.62(a)
- Towing a person using a parasail, hang glider, or other airborne device, 3.12(b)
- Removing sunken, grounded, or disabled vessels, 3.14(a)
- Operating a submersible, 3.19
- Commercial notices or advertisements, 5.1
- Commercial operations, 5.3
- Commercial photography, 5.5
- Construction or repair of any building, structure, facility, road, trail, or airstrip on federal lands, 5.7
- Mining operations (9.9(a)) or an approved Plan of Operations (in lieu of permit))
- Scientific research, 13.50
- Launching, landing, or operating unmanned aircraft, 13.50
- Backcountry camping, 13.1402
- Access to inholdings where access is not made by aircraft, snow machine, motorboat or non-motorized surface transportation, 43 CFR 36.10(b)
- Salvaging, removing, possessing aircraft, 43 CFR 36.11 (f)(3)(ii)
- Helicopter use, 43 CFR 36.11(f)(4)
- Off-road vehicle (ORV) use, 43 CFR 36.11(g)(2)
- Temporary access across federal land for survey, geophysical or exploratory work, 43 CFR 36.12(c)

II. PART 2. RESOURCE PROTECTION, PUBLIC USE AND RECREATION

2.1(a)(4) Designated areas for collection of dead wood on the ground for firewood

Dead wood on the ground may be collected for use as fuel for campfires within the park.

This requirement is intended to protect standing vegetation from use as firewood.

2.1(c)(1)-(3) Designated fruits, nuts, berries, and unoccupied seashells to harvest by hand

All edible fruits, berries, and nuts may be gathered by hand for personal consumption.

See also 36 CFR Part 13.1404 regarding the collection of mushrooms.

These limitations are intended to identify items that can be harvested for personal use without damaging the health of these species or derogation of other park resources.

2.3(d)(8) Designated areas open for fishing from motor road bridges and public boat docks

All areas are designated as open for fishing from motor road bridges and boat docks.

2.4(a)(2)(i), (h) Carrying, using, or possessing weapons

Individuals are authorized to possess firearms in NPS areas in accordance with applicable state and federal law. With the exception of public use cabins, possession of firearms is prohibited in federally owned or leased buildings. The laws regarding discharge of firearms remain unchanged.

2.10(d) Food storage: designated areas and methods

(1) Definition: A *bear resistant container* (BRC) means an item constructed to prevent access by a bear. BRC's include—

- Items approved by the Department of Interior and Agriculture's Interagency Grizzly Bear Committee;
- Additional items listed by the State of Alaska, Department of Fish and Game, Division of Wildlife Conservation:
<http://www.adfg.alaska.gov/index.cfm?adfg=livingwithbears.bearcontainers>, with the concurrence of the superintendent;
- Items or methods approved by the superintendent.

(2) Throughout the park, all food (except legally taken game) and beverages, food and beverage containers, garbage, harvested fish and equipment used to cook or store food must be stored in a bear resistant container (BRC) or secured—

- In NPS provided bear boxes in designated camp areas;
- On NPS provided bear poles in designated camp areas;
- Within a hard sided building;
- Within lockable and hard sided section of a vehicle, vessel, or aircraft; or

- By caching a minimum of 100 feet from camp and suspending at least 10 feet above the ground and 4 feet horizontally from a post, tree trunk or other object on a line or branch that will not support a bear's weight.
 - The superintendent may, upon request, waive or modify food storage requirements in circumstances where compliance with these requirements is not possible, overly burdensome, and is consistent with public safety and wildlife conservation interests.
- (3) This provision does not apply to—
- Food that is being transported, consumed or prepared for consumption; and
 - Clean dishes and cooking equipment free of food odors.

The intent of these designations is to prevent bears and other wildlife from obtaining and habituating to food and garbage, thus protecting wildlife and park visitors alike. We strongly recommend that dishes and cooking equipment be securely stored; but clean and odor free items are not required to be stored in secure containers. Ice chests and coolers, tents, dry bags or stuff sacks, plastic packing boxes (Totes, Action Packers, etc.) and unmodified kayaks are not generally approved as BRC. The park provides bear poles and/or storage lockers at each campsite along the Chilkoot trail and at a central location in the Dyea Campground.

2.13(a)(1) Fires: designated areas and conditions

State or local fire burn bans are automatically adopted under this section unless the superintendent determines the ban is not necessary in park areas.

Wood fires are permitted in the provided fire rings in the Dyea Campground or the stoves provided in warming shelters at Finnegan's Point, Canyon City, Pleasant Camp and Sheep Camp warming shelters. All trash (tin foil, burnt food, glass, cans) must be removed from the fire site after use.

These requirements are intended to ensure that wood sources are not depleted, to minimize the risk of human caused wildfires and prevent the accumulation of trash in fire rings and stoves.

2.14(a)(8) Sanitation: human waste in developed areas

Restrooms are provided in Skagway and outhouses at the developed areas in Dyea (campground and picnic area, Chilkoot Trailhead, Slide Cemetery, and Dyea Town Site).

This requirement is intended to ensure that proper disposal of human waste occurs in frequently visited public areas.

2.14(a)(9) Sanitation: designated areas for disposal of human waste in undeveloped areas

Outhouses are provided at the designated backcountry campsites; otherwise human feces must be either packed out or deposited in a "cathole" dug 6-8 inches deep in soil at least 100 feet from any water source, shoreline, campsite or trail. When the ground is frozen,

human feces must be disposed over at least 100 feet from any water source and covered with snow or packed out.

Tissue paper and sanitary items should be packed out or burned when fire hazard is low.

The intent of these conditions is to provide for healthy, sanitary and visually aesthetic environments as well as to protect natural resources.

2.19(a) Winter activities on roads and in parking areas: designated areas

All roads and parking areas open to motor vehicle traffic are open to skiing, snowshoeing, sledding, and other similar winter sports.

2.21 Smoking

All park offices and visitor facilities are closed to smoking.

Smoking is prohibited within 100 feet of the park fuel storage facilities.

These restrictions are intended to protect public safety from fire or explosion around fuel storage facilities. Electronic cigarettes, or e-cigs, are included in the above restrictions.

2.22 Property: leaving property unattended for 24 hours

Chilkoot trail user vehicles may be left parked at the designated overnight parking area near Dyea Ranger Station while hiking the trail.

The intent is to allow hikers to leave their vehicles at the trailhead in excess of the 24-hr property restriction.

2.35(a)(3)(i) Alcoholic beverages: areas designated as closed to consumption

It is unlawful for any person to use or consume any alcoholic beverage on federally owned property open to the public within the business district of the city, except those premises covered by a liquor control license issued by the state authorizing the sale and consumption of alcohol within those premises. "Business district" is defined as the area located between First Avenue and Seventh Avenue, from Spring Street west to State Street.

2.51 First Amendment Demonstrations

The areas designated on Maps 1a and 1b (Appendix 1) are open to First Amendment demonstrations by groups involving 25 or fewer persons without a permit.

Demonstrations involving twenty-six or more individuals must have a permit issued by the superintendent.

2.52 Designated areas for sale and distribution of printed matter and other message-bearing items for First Amendment purposes

The area designated on Map 1a (Appendix 1) is open to sale and distribution of printed matter and other message-bearing items without a permit as defined by 36 CFR 2.52(a)

when conducted by 25 or fewer persons. Activities must not block ingress or egress to buildings or roadways. Sale or distribution of printed matter and other message-bearing items conducted by 26 or more individuals must have a permit issued by the Superintendent.

Groups of 25 people or smaller are not required to obtain a permit for these First Amendment activities but are required to remain within the designated demonstration area.

This update brings the compendium language current with the 83 FR 2069 revision to 36 CFR 2.52 revision effective February 15, 2018.

2.62(b) Memorialization: designation of areas for scattering ashes

All areas of the park, except for campgrounds, roads, picnic areas, and other park developed areas, are open to scattering of ashes without a permit.

III. PART 3. BOATING AND WATER USE ACTIVITIES

3.12(a) Water skiing: designated waters

No areas designated open.

3.14(a) Conditions for removing sunken, grounded, or disabled vessels

A permit is required from the superintendent before sunken, grounded, or disabled vessels may be removed from waters within NPS administered areas except when the operator is able to remove or repair the vessel on site safely and without potential for damage to resources.

This requirement allows the superintendent to establish terms and conditions for salvage operations as necessary to protect resources and provide for public safety.

IV. PART 4. VEHICLES AND TRAFFIC SAFETY

4.11(a) Load weight and size limits: permit requirements and restrictive conditions

Vehicles over 26 feet are restricted from travel on the park road between Dyea Road and Nelson Slough, except as otherwise specifically approved in advance by the superintendent.

The restriction on vehicle length is intended to preserve the safety of other drivers, pedestrians, equestrians, and bicyclists on the unpaved, narrow, winding roads which have restricted sight-distances, clearances for parking, and turning radii.

4.21(b)-(c) Speed limits: designation of a different speed limit

The park road between Dyea Road and Nelson Slough is limited to a maximum speed of 15 mph.

A reduced speed limit near Dyea is for public safety. Pedestrians and bicyclists often use the roadway and visibility is limited due to road design and vegetation.

4.30(i)(1) Designated roads, parking areas, and trails open to electric bicycles, or specific classes of electric bicycles

Dyea Road, Dyea Historic Townsite Road, Slide Cemetery Access Road, Dyea Historic Townsite trails, Chilkoot Trail, Lost Lake Trail

4.30(i)(7) Electric bicycle use restrictions/conditions

No additional restrictions or conditions in areas designated as open to electric bicycle use. See 36 CFR 4.30(i) for more information.

4.31 Hitchhiking: designated areas

All areas are open to hitchhiking.

V. PART 13. ALASKA REGULATIONS

13.50 Closures and restrictions

Consumption of food and beverages in park buildings

Eating and drinking are not permitted in exhibit display areas in park buildings, nor in the visitor center auditorium without specific authorization from the superintendent.

The intent is to protect exhibit displays, floor coverings, and upholstery from damages which might accompany unsupervised use.

Unmanned Aircraft.

Launching, landing, or operating an unmanned aircraft from or on lands and waters administered by the National Park Service within the boundaries Klondike Gold Rush National Historical Park is prohibited except as approved in writing by the superintendent.

The term "unmanned aircraft" means a device that is used or intended to be used for flight in the air without the possibility of direct human intervention from within or on the device, and the associated operational elements and components that are required for the pilot or system operator in command to operate or control the device (such as cameras, sensors, communication links). This term includes all types of devices that meet this

definition (e.g., model airplanes, quadcopters, drones) that are used for any purpose, including for recreation or commerce.

In Park areas where use of model aircraft for hobbyist or recreational use has been previously authorized, such use may continue under a permit issued by the superintendent.

This restriction does not affect the primary jurisdiction of the Federal Aviation Administration over the National Airspace System.

Domestic Goats and Sheep

Use or possession of domestic goats or sheep within NPS administered areas is prohibited.

Llamas, Alpacas, and other Members of the Camelidae or Bovidae Family

Use or possession of llamas, alpacas, or any other domestic animal of the Camelidae or Bovidae Family within NPS administered areas is prohibited, except as pack animals in accordance with written authorization from the superintendent.

In early 2021 the United States District Court for the District of Columbia issued a decision in the Price v. Barr case that invalidated existing laws for managing commercial filming in national park areas. The US Department of Justice appealed the District Court's decision and on August 23, 2022, the United States Court of Appeals for the District of Columbia issued a decision reversing the order of the District Court. The statute and regulations that governed commercial filming before the Price v Barr decision are once again in effect.

Mask Wearing Requirements

All individuals over the age of two, regardless of vaccination status, must wear masks, except when actively eating or drinking, in the following locations:

- All common areas and shared workspaces in buildings owned, rented or leased by the National Park Service, including, but not limited to, park visitor centers, administrative offices, lodges, gift shops and restaurants.

Masks must cover the nose and mouth and fit snugly around the nose and chin with no large gaps around the sides of the face. Masks not designed to be protective, masks with ventilation valves, and face shields do not meet the requirement.

Regardless of vaccination status, all individuals must comply with all orders regarding masks issued by the Centers for Disease Control and Prevention (CDC).

CDC prevention measures continue to apply to all travelers on public transit, regardless of vaccination status. Masks remain required on all forms of public transit that operate within parks, including buses, trains, and boats/ferries, and in transportation hubs.

This provision is approved and will remain in effect until rescinded or superseded.

VI. KLONDIKE GOLD RUSH SPECIAL REGULATIONS 13.1402(a) Klondike Gold Rush: designated camping areas

Camping is authorized in the following areas pursuant to a permit:

- Dyea Campground
- Finnegan's Point Campground
- Canyon City Campground
- Pleasant Camp Campground
- Sheep Camp Campground

13.1402(b) Klondike Gold Rush: camping permit conditions

Dyea Campground – From the Friday preceding Memorial Day through Labor Day all campers must register and make payment for use of park campsites. Campsite occupancy is limited to two cars or four motorcycles, and eight persons. The designated group site occupancy is limited to twelve people.

All Chilkoot Trail Backcountry Camps – Between the dates of June 1 and September 13, all campers must obtain a backcountry use permit and make payment for use of campsites along the trail. Campsite occupancy is limited to two tents and/or six persons.

All Chilkoot Trail Backcountry Camps – Between the dates of September 14 through October 31 and April 15 through May 31, all campers on the Chilkoot Trail must register for use of campsites along the trail.

Permit requirements are intended to allow staff to accurately monitor compliance with camping conditions. Limits on the party size are intended to prevent impacts from overuse of limited facilities which are designed and provided for recreational occupancy within a prepared site.

Registration requirements are intended to allow staff to accurately track visitor use patterns, assist with information gathering in case of an emergency and monitor compliance with camping conditions.

13.1404 Klondike Gold Rush: authorization to collect mushrooms

Edible mushrooms may be gathered by hand for personal consumption. The quantity gathered by any individual must not exceed three (3) gallons during any 24-hour period.

This designation is made pursuant to a determination that such collections by hand for personal consumption will not adversely affect park wildlife nor the perpetuation of the subject species, nor otherwise adversely affect other park resources.

VII. 43 CFR, PART 36 TRANSPORTATION AND UTILITY SYSTEMS (Access Regulations)

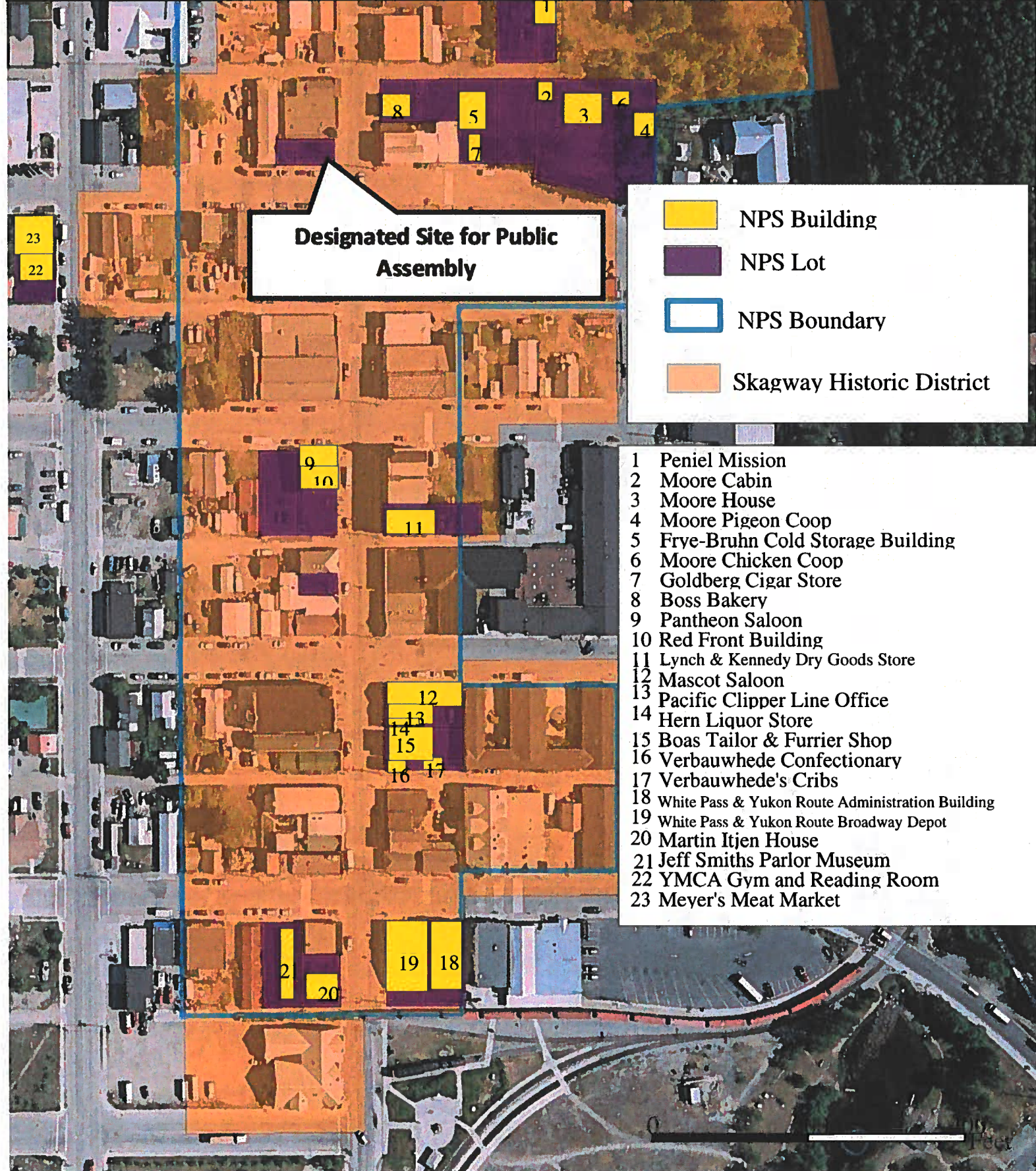
36.11(c) Temporary closures to the use of snow machines for traditional activities

The superintendent will notify the public when snow cover is adequate in the Dyea Historic Townsite (Appendix 2) to allow snow machine use each winter season. The public will also be notified of any changes in conditions (inadequate snow cover) resulting in any temporary closures or restrictions on snow machine use and or reopenings following such temporary closures or restrictions.

The use of snow machines for other activities is prohibited pursuant to 36 CFR 2.18(c).

36.11(f)(3)(ii) Established procedure for salvaging and removing downed aircraft

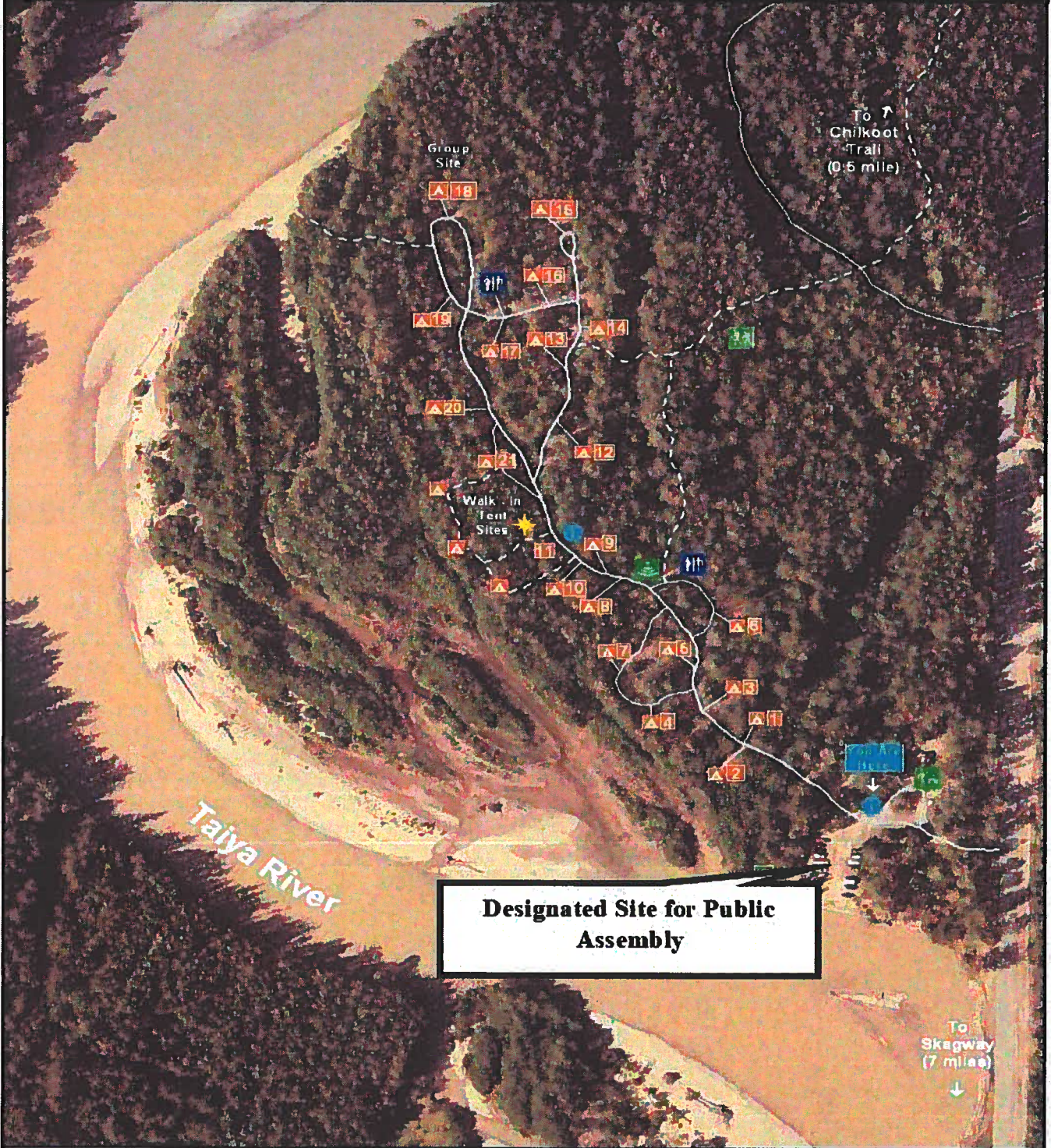
A permit is required from the superintendent before downed aircraft may be salvaged and removed from the park; violation of the terms and conditions of the permit is prohibited.



Designated Site for Public Assembly

- NPS Building
- NPS Lot
- NPS Boundary
- Skagway Historic District

- 1 Peniel Mission
- 2 Moore Cabin
- 3 Moore House
- 4 Moore Pigeon Coop
- 5 Frye-Bruhn Cold Storage Building
- 6 Moore Chicken Coop
- 7 Goldberg Cigar Store
- 8 Boss Bakery
- 9 Pantheon Saloon
- 10 Red Front Building
- 11 Lynch & Kennedy Dry Goods Store
- 12 Mascot Saloon
- 13 Pacific Clipper Line Office
- 14 Hern Liquor Store
- 15 Boas Tailor & Furrier Shop
- 16 Verbaudhede Confectionary
- 17 Verbaudhede's Cribs
- 18 White Pass & Yukon Route Administration Building
- 19 White Pass & Yukon Route Broadway Depot
- 20 Martin Itjen House
- 21 Jeff Smiths Parlor Museum
- 22 YMCA Gym and Reading Room
- 23 Meyer's Meat Market



Designated Site for Public Assembly

Ranger Station	Picnic Area	Hiking Trail
Tentsite	Bear Pole	Road
Restroom	Campfire Circle	Trail
Information Kiosk		

Klondike Gold Rush National Historical Park

75 0 75 150 225 300 Feet
 1 : 1,808 1 inch = 150.63 feet

June 1, 2002

Appendix 2

