

**LAKE CLARK NATIONAL PARK AND PRESERVE
2026 COMPENDIUM**

National Park Service (NPS) regulations applicable to the protection and equitable public use of units of the National Park System grant specified authorities to a park superintendent to allow or restrict certain activities. NPS regulations are found in Titles 36 and 43 of the Code of Federal Regulations (CFR) and created under authority and responsibility granted the Secretary of Interior in Titles 16 and 54 of the United States Code. The following compendium comprises a listing of NPS regulations that provide the Superintendent with discretionary authority to make designations or impose public use restrictions or conditions in park areas. The applicability and scope of the compendium is articulated in 36 CFR Sections 1.2 and 13.2, and 43 CFR Section 36.1.

The larger body of NPS regulations that do not provide discretionary authority to the Superintendent is not cited in this compendium. A complete and accurate picture of regulations governing use and protection of the unit can only be gained by viewing this compendium in context with the full body of applicable regulations found in Titles 36 and 43 CFR. *Please contact Lake Clark National Park and Preserve, Port Alsworth, Alaska at (907) 781-2218 for questions relating to information provided in this compendium.*

Signed Copy on File in Superintendent's Office

Superintendent Approval

TITLE 36 CODE OF FEDERAL REGULATIONS

PART 1. GENERAL PROVISIONS

1.6(f) Compilation of activities requiring a permit

- Collecting research specimens, 2.5
- Operating a power saw in developed areas, 2.12(a)(2)
- Operating a portable motor or engine in undeveloped areas, 2.12(a)(3)
- Operating a public address system, 2.12(a)(4)
- Air delivery, 2.17(a)(3)
- Noncommercial soliciting, 2.37
- Using, possessing, storing, or transporting explosives, blasting agents, or explosive materials, 2.38(a)
- Using or possessing fireworks and firecrackers, 2.38(b)
- Special events, 2.50(a)
- Demonstrations involving 26 or more persons, 2.51
- Sale and distribution of printed matter for First Amendment purposes by groups of 26 or more persons, 2.52
- Grazing, 2.60(a)(1), (2)
- Residing on federal lands, 2.61(a)
- Installing a monument or other commemorative installation, 2.62(a)
- Towing a person using a parasail, hang glider, or other airborne device, 3.12(b)
- Removing sunken, grounded, or disabled vessels, 3.14(a)
- Operating a submersible, 3.19
- Commercial notices or advertisements, 5.1
- Commercial operations, 5.3
- Commercial photography or filming, 5.5
- Construction or repair of any building, structure, facility, road, trail, or airstrip on federal lands, 5.7
- Mining operations (9.9(a)) or an approved Plan of Operations (in lieu of permit))
- Scientific research, 13.50
- Group sizes exceeding 15 individuals, 13.50
- Launching, landing, or operating unmanned aircraft, 13.50
- Some filming, still photography, and audio recording (depends upon the facts and circumstances; contact the park for more information). 36 CFR 13.50 and 54 U.S.C. 100905
- Cabins on federal lands, 13.100-13.188
- Subsistence use in the Park by person who does not live within the Park boundary or a resident zone community, 13.440(a)
- Using aircraft access for subsistence activities in the Park, 13.450(a), 13.450(b)(1)
- Cutting of standing timber greater than 3 inches in diameter for non-commercial subsistence uses, 13.85(a)(1)
- Access to inholdings where access is not made by aircraft, snowmachine, motorboat or non-motorized surface transportation, 43 CFR 36.10(b)
- Salvaging, removing, possessing aircraft, 43 CFR 36.11 (f)(3)(ii)

- Helicopter use, 43 CFR 36.11(f)(4)
- Off-road vehicle (ORV) use, 43 CFR 36.11(g)(2)
- Temporary access across federal land for survey, geophysical or exploratory work, 43 CFR 36.12(c)

PART 2. RESOURCE PROTECTION, PUBLIC USE AND RECREATION

2.1(a)(4) Designated areas for collection of dead wood on the ground for firewood
Superseded by 13.35(c)(4), 13.35(d), and 13.485(b).

2.1(a)(5) Designated areas and conditions for walking on, climbing, entering, ascending, descending, or traversing an archeological or cultural resource, monument, or statue
No designated areas or conditions.

2.1(b) Designated trails
No restrictions on walking or hiking.

2.1(c)(1)-(3) Designated fruits, nuts, berries, and unoccupied seashells to harvest by hand and collection restrictions
Superseded by 13.35(c) and 13.485(b).

2.2(d) Established conditions and procedures for transporting lawfully taken wildlife through park areas
See also 13.42(e).

2.2(e) Designated areas for wildlife viewing with artificial light
No areas designated for closure.

2.3(d)(8) Designated areas open for fishing from motor road bridges and public boat docks
All areas are designated as open for fishing from motor road bridges and boat docks.

2.4(a)(2)(i), (h) Carrying, using, or possessing weapons
Individuals are authorized to possess firearms in NPS areas in accordance with applicable state and federal law. With the exception of public use cabins, possession of firearms is prohibited in Federally owned or leased buildings. The laws regarding discharge of firearms remain unchanged.

2.10(a) Camping: conditions and permits
Superseded in part by 13.25.

2.10(d) Food storage: designated areas and methods

(1) Definition: *A bear resistant container* (BRC) means an item constructed to prevent access by a bear. BRC's include—

- Items approved by the Department of Interior and Agriculture's Interagency Grizzly Bear Committee:
<http://igbconline.org/certified-products-list/>

- Additional items listed by the State of Alaska, Department of Fish and Game, Division of Wildlife Conservation: <http://www.adfg.alaska.gov/index.cfm?adfg=livingwithbears.bearcontainers>, with the concurrence of the Superintendent;
 - Items or methods approved by the Superintendent.
- (2) In designated areas - within ½ mile of a) the coast line of Cook Inlet, b) the shore lines of Kontrashibuna Lake, Tazimina Lake, Telaquana Lake, Crescent Lake, Turquoise Lake, Upper Twin Lake and Lower Twin Lake, and c) the Priest Rock Cabin – food and beverages, food and beverage containers, garbage and harvested fish must be stored in a bear resistant container (BRC) or secured—
- Within a hard sided building;
 - Within lockable and hard sided section of a vehicle, vessel, or aircraft; or
 - By caching a minimum of 100 feet from camp and suspending at least 10 feet above the ground and 4 feet horizontally from a post, tree trunk or other object on a line or branch that will not support a bear’s weight.
 - The Superintendent may, upon request, waive or modify food storage requirements in circumstances where compliance with these requirements is not possible, overly burdensome, and is consistent with public safety and wildlife conservation interests.
- (3) This provision does not apply to—
- Legally taken game
 - Areas not designated in paragraph (2);
 - Food that is being transported, consumed or prepared for consumption; and
 - Clean dishes and cooking equipment free of food odors.
 - Bait being used for trapping and hunting under the provisions of state and federal law.
- (4) Bear Resistant Fencing
From May 1st to November 1st of each year, use of functional and active bear resistant electrical fencing is required when camping within ½ mile of the Cook Inlet Coastline of Lake Clark National Park.

The intent of these designations is to prevent bears and other wildlife from obtaining and habituating to food and garbage, thus protecting wildlife and park visitors alike. We strongly recommend that dishes and cooking equipment be securely stored; but clean and odor free items are not required to be stored in secure containers. We also recommend using BRC’s in all areas of the park, but do not require it. Ice chests and coolers, tents, dry bags or stuff sacks, plastic packing boxes (Totes, Action Packers, etc) and unmodified kayaks are not generally approved as BRC. The park offers bear resistant containers for temporary use to the public. The containers are free of charge and can be picked up at the park’s visitor center in Port Alsworth.

2.11 Picnicking: designated areas

Superseded by 13.26

2.13(a)(1) Fires: designated areas and conditions

Campfires are prohibited in Richard L. Proenneke Historic Site (see attached map) and within 100 yards of the Priest Rock public use cabin. Campfires are authorized in all other areas without a permit. All trash (foil, burnt food, glass, and cans) must be removed from the fire site after use.

Applicable to all areas:

State or local fire burn bans are automatically adopted under this section unless the superintendent determines the ban is not necessary in park areas.

A fire may be ignited and maintained only by using fuel sources designed and commonly used for warmth or the preparation of food, such as charcoal briquettes or natural firewood. Lighting or maintaining a fire with other materials including, but not limited to, flammable liquids, garbage, fireworks, plastics, aerosol canisters, batteries, or other manufactured or synthetic materials, is prohibited.

This action is necessary for the maintenance of public health and safety, protection of environmental or scenic values, protection of natural or cultural resources, and the implementation of management responsibilities. Materials other than approved combustibles – especially fire accelerants and substances prone to wind transport or explosion – creates serious risks when used to light or maintain fires. These combustibles can ignite or spread wildfires that directly threaten people and valuable resources and assets. The burning of manufactured or synthetic materials can contribute to air pollution, contaminate soil and water, and be toxic to humans and the environment. Less restrictive measures, such as an education campaign informing visitors of the risks of using certain materials to light or maintain a fire, would not be commensurate with the substantial risks associated with those activities and could lead to adverse outcomes that might be prevented by establishing an enforceable condition.

2.14(a)(2) Sanitation and refuse: conditions using government receptacles

Dumping of refuse brought into the park in the NPS landfill or trash receptacles is prohibited unless otherwise authorized by the Superintendent.

This requirement is intended to ensure the refuse handled by the park is generated by activities occurring within the park.

2.14(a)(5) Sanitation: designated areas for bathing and washing

No designated areas. Unless otherwise allowed by the Superintendent, bathing and washing of cooking utensils, food and other property at all public water outlets, fixtures, or pools is prohibited.

2.14(a)(7) Sanitation: designated areas for disposal of fish remains

Silver Salmon Creek: all fish must be gutted and cleaned on the ocean beach.

In all other areas, fish remains may not be disposed on land, or in waters within 200 feet of public boat docks, designated swimming beaches, or within developed areas for reasons of public health and safety.

Fish remains may not be disposed of on either land or water within 200 feet of public boat docks or designated swimming beaches, or within developed areas for reasons of public health and safety.

2.14(a)(9), (b) Sanitation: disposal, carrying out of human waste

Within the designated historic sites at Kijik and Proenneke’s Cabin, within 100 yards of NPS structures and ½ mile of the Cook Inlet coastline of Lake Clark National Park & Preserve, all solid human body waste and associated sanitary products such as toilet paper must be removed for disposal outside of the area in a manner approved for the method of collection. This regulation does not apply to the use of approved restroom facilities within these areas.

For all other areas

When the ground is not frozen, human feces must be either packed out or deposited in a “cathole” dug 6-8 inches deep in soil at least 100 feet from any water source, shoreline, campsite or trail. When the ground is frozen, human feces must be disposed over at least 100 feet from any water source and covered with snow or packed out. Tissue paper and sanitary items should be packed out or burned when fire hazard is low.

The intent of these conditions is to provide for healthy, sanitary and visually aesthetic environments as well as to protect natural resources.

2.15(a)(1) Areas designated as closed to pets

No designated areas. Pets must be leashed or physically restrained at all times.

2.15(a)(3) Conditions for leaving pets unattended and tied to an object

No conditions at present.

Leaving pets unattended and tied to an object is prohibited.

2.15(a)(5) Pet excrement disposal conditions

No conditions at present.

2.16 (a)-(c) Horses and pack animals

Superseded by 43 CFR 36.11(e).

Access for subsistence purposes under 36 CFR 13.460(a) supersedes this section.

2.17(a)(1) Aircraft operation

Superseded by 43 CFR 36.11(f)(1).

Use of aircraft in the Park for subsistence purposes is prohibited under 36 CFR 13.450.

2.17(a)(2) Aircraft operation near docks, piers, swimming beaches and other designated areas

No areas prohibited.

2.17(c)(1) Conditions for removing downed aircraft

Superseded by 43 CFR 36.11(f)(3)(ii).

2.18(c) Snowmobiles: designated areas for use

No areas designated for snowmachine use.

See also, 43 CFR 36.11(c) regarding snowmachine use for traditional activities and 36 CFR 13.460 for subsistence uses.

2.19(a) Winter activities on roads and in parking areas: designated areas

Roads and parking areas open to vehicle traffic in the winter are designated as open to winter activities.

2.19(b) The towing of persons on skis, sleds, or other sliding devices by motor vehicle or snowmobile is prohibited, except in designated areas or routes

No designated areas or routes.

2.21 Smoking

All public buildings are closed to smoking unless specifically permitted and signed as a designated smoking area. Smoking is prohibited within 100 feet of the park fuel and aviation gas storage facility.

These restrictions are intended to protect public safety from fire or explosion around fuel storage and dispensing facilities. Electronic cigarettes, or e-cigs, are included in the above restrictions.

2.22 Property: leaving property unattended for longer than 24 hours

Superseded by 13.45.

2.35(a)(3)(i) Alcoholic beverages: areas designated as closed to consumption

No areas designated as closed.

2.38(b) Fireworks: permits, designated areas, and conditions

No areas designated for use of fireworks.

2.51 First Amendment Demonstrations

The area depicted on the attached map titled “Designated Area for First Amendment Activities” is open to public demonstrations by groups that involve 25 or fewer persons without a permit. Demonstrations involving twenty-six or more individuals must have a permit issued by the superintendent.

2.52 Designated areas for sale and distribution of printed matter for First Amendment purposes

The area depicted on the attached map titled “Designated Area for First Amendment Activities” is open to sale or distribution of printed matter by groups that involve 25 or fewer persons without a permit. Printed matter is limited to message-bearing textual printed material such as books, pamphlets, magazines, and leaflets, provided that it is not solely commercial advertising. Groups involving twenty-six or more individuals must have a permit issued by the superintendent.

2.60(a)(3) Designated areas for grazing

Individuals may allow authorized pack or saddle animals to graze in NPS areas without a permit for less than 14 days in a calendar year under the following conditions:

1. Grazing is in conjunction with the animals being used as pack or saddle animals in NPS areas.
2. Any feed brought in must be weed free.

Grazing in support of commercial operations is only allowed under permit from the superintendent.

These restrictions seek to lessen the impact of extended camps on vegetation.

See also section 13.50 of this document which prohibits certain domestic animals in NPS areas.

2.62(b) Memorialization: designation of areas for scattering ashes

Except as listed below, all areas of the park and preserve are open to scattering of human ashes from cremation without a permit.

Within ¼ mile of any building or structure, camping areas, occupied campsites, roads, picnic areas, and other park developed areas

Within the boundaries of the Kijik Archaeological District National Historic Landmark and the Richard L. Proenneke Historic District

These provisions are intended to allow for the scattering of human ashes without a permit requirement in a way that protects the health of other users, reduces the potential for conflict and restricts the activity in sensitive or congested areas.

PART 3. BOATING AND WATER USE ACTIVITIES

3.3 Permits

No permits required at present.

3.7 Personal Flotation Devices: designated times and/or activities

No designated times or activities. PFDs must be worn in accordance with 33 CFR part 175.

3.8(a)(2) Boating, prohibited operations: designated launching areas

All areas are open to launching of boats.

3.8(a)(4) Operating a vessel in excess of designated length, width, or horsepower

No designations at present.

3.8(b)(3) Operating a vessel in excess of flat wake speed in designated areas

No designated areas.

3.12(a) Water skiing: designated waters

All areas designated open.

3.14(a) Conditions for removing sunken, grounded, or disabled vessels

A permit is required from the Superintendent before sunken, grounded, or disabled vessels may be removed from waters within NPS administered areas except when the operator is able to remove or repair the vessel on site safely and without potential for damage to resources.

This requirement allows the Superintendent to establish terms and conditions for salvage operations as necessary to protect resources and provide for public safety.

3.16 Swimming and wading: areas designated as closed

All areas are open to swimming and wading.

3.17(a) Designated swimming areas and beaches

No designated areas.

3.17(c) Use or possession of flotation devices, glass containers, kites, or incompatible activities in swimming areas or beaches

No restrictions at present.

3.18(a) SCUBA and underwater diving: closures and restrictions

No closures or restrictions at present.

PART 4. VEHICLES AND TRAFFIC SAFETY

4.10 Routes or areas designated for off-road motor vehicle use in Preserves

No routes or areas designated.

See also 43 CFR 36.11(g).

4.11(a) Load weight and size limits: permit requirements and restrictive conditions

No restrictions at present.

4.21(b)-(c) Speed limits: designation of a different speed limit

No designations; therefore park area speed limits of 15 miles per hour apply in the business and residential areas.

All vehicles should operate at a safe speed, especially in the Port Alsworth headquarters/residential areas.

4.30(a) Routes designated as open to bicycles

Superseded by 43 CFR 36.11(e).

4.30(d)(1) Wilderness closed to bicycle use

Superseded by 43 CFR 36.11(e).

4.30(i)(1) Designated roads, parking areas, and trails open to electric bicycles, or specific classes of electric bicycles

All roads and parking areas that are open to bicycles.

In accordance with the restrictions/conditions listed under the authority of 4.30(i)(7) Tanalian Falls Trail, Beaver Pond Trail, and Ridge Trail.

4.30(i)(7) Electric bicycle use restrictions/conditions

The sections of the Tanalian Falls Trail, Beaver Pond Trail, and Ridge Trail within Lake Clark National Park and Preserve are closed to e-bikes from April 15th to November 15th. (See the attached map.)

No additional restrictions or conditions in areas designated as open to electric bicycle use. See 36 CFR 4.30(i) for more information.

4.31 Hitchhiking: designated areas

All areas are open to hitchhiking.

PART 5. COMMERCIAL AND PRIVATE OPERATIONS

5.7 Construction of buildings, roads, trails, airstrips, or other facilities

Maintenance of established landing strips utilizing non-motorized hand tools is not considered construction or repair and no permit is required.

PART 13. ALASKA REGULATIONS

13.25(a) Closures and restrictions to camping

From April 15 through September 30, camping within 2 miles of Upper or Lower Twin Lakes for more than a total of 21 days, either in a single period or combined periods is prohibited, unless otherwise authorized by the superintendent.

From April 15 through September 30, camping at the Hope Creek campsite (see attached map) for more than a total of 14 days, in either a single period or combined periods is prohibited, unless otherwise authorized by the superintendent.

Except at designated campgrounds, camping is prohibited in the Richard L. Proenneke Historic Site and surrounding area (see attached map).

13.25(b) Site time limits: authorization to exceed 14 day limit at one location

No general exceptions at present.

13.25(c) Designated campgrounds: restrictions, terms, and conditions

No designated campgrounds.

13.26 Picnicking-areas where prohibited or otherwise restricted

Chinitna Bay bear viewing area - Picnicking in Chinitna Bay from Glacier spit to the NPS Ranger Cabin (2 miles east) is prohibited above the beach from June 1 thru August 30.

This restriction is intended to minimize the risk of negative human/bear interactions and prevent bears from associating food with the bear viewing area.

An approximately 150 acre area of sedge meadow in the Silver Salmon Creek area is closed to all picnicking from May 1st to September 30th. Picnicking may occur within the confines of an electric fence or and enclosed, hard sided structure or vehicle, consistent with the requirements for food preparation and consumption found within the camping section of this document. (See attached map.)

The area is used seasonally by brown bears as a critical food source. Bears become increasingly dangerous when they learn to associate food with people.

Action is intended to reduce the need to modify natural wildlife behavior through reducing the likelihood of food creating an unsafe, negative human/wildlife interaction requiring the need for more intrusive bear management actions.

13.35(d) Collection of dead standing wood: areas designated as open and conditions for collection

No designated areas.

13.35(f)(1) Natural features: size and quantity restrictions for collection

No restrictions at present.

13.35(f)(2) Natural features: closures or restrictions due to adverse impacts

No closures or restrictions at present.

13.45(b)(1)-(6) Exceptions to unattended or abandoned property

Superintendent authorizations for exceptions for unattended or abandoned property are made on a case by case basis. Contact park headquarters for more information.

13.45(c) Designated areas where personal property may not be left unattended for any time period, limits on amounts and types, manner in which property is stored

No designated areas.

13.50 Closures and restrictions

Group Size. A permit is required for group sizes exceeding 15 individuals.

Chinitna Bay: From May 1 through August 31, meadow north of the viewing areas and the slough in Chinitna Bay as shown on the attached map is closed.

Silver Salmon Creek/Sargent Creek: The trail shown on the attached map of Silver Salmon Creek is closed to all public entry.

Silver Salmon Creek Seasonal Meadow Closure An approximately 3.7 acre area of sedge meadow in the Silver Salmon Creek area is closed to all off trail entry from August 1 to September 30. The developed pedestrian and pedestrian fish box trails remain open to foot traffic during the closure period. (See attached map.)

Unmanned Aircraft.

Launching, landing, or operating an uncrewed or remotely piloted aircraft from or on lands and waters administered by the National Park Service within the boundaries of Yukon-Charley Rivers National Preserve is prohibited except as approved in writing by the superintendent.

This restriction is required for the protection of wildlife, sound scape, Wilderness character, and visitor enjoyment. This restriction does not affect the primary jurisdiction of the Federal Aviation Administration over the National Airspace System.

Domestic Goats and Sheep

Use or possession of domestic goats or sheep within NPS administered areas is prohibited.

Llamas, Alpacas, and other Members of the Camelidae or Bovidae Family

Use or possession of llamas, alpacas, or any other domestic animal of the Camelidae or Bovidae Family within NPS administered areas is prohibited except as pack animals in accordance with written authorization from the superintendent.

Proenneke Historic Cabin

Food and beverages (other than water) are prohibited inside of the Richard L. Proenneke Historic Cabin.

Filming, still photography, and audio recording

Filming, still photography, and audio recording activity may require a permit, consistent with 54 U.S.C. 100905. o Filming, still photography, and audio recording activity that occurs in closed areas, requires exclusive use of a site or area, or involves a set or staging equipment other than handheld equipment (such as a tripod, monopod, and handheld lighting equipment) requires a permit, unless the activity is affiliated with an activity or event that has been allowed under a written authorization, such as a special use permit.

Filming, still photography, and audio recording that involves more than eight individuals requires a permit, unless the NPS has specifically notified an individual or group that a permit is not required, or if the activity is affiliated with an activity or event that has been allowed under a written authorization, such as a special use permit.

If a permit is required for the reasons stated above, or if the NPS otherwise determines and then notifies an individual or group that a permit is required for a filming, still photography, or audio recording activity, then engaging in that activity without a permit is prohibited. Violating a term or condition of a permit issued by the NPS for a filming, still photography, or audio recording activity is prohibited, and may result in the suspension or revocation of the permit, in addition to any penalties that may apply under 36 CFR 1.3.

Federal law at 54 U.S.C. 100905 states that permits and fees are not required for filming, still photography, or audio recording in park areas if certain requirements are met. These requirements address various topics, including, but not limited to, group size, location, equipment, potential impacts to resources and visitors, and the likelihood that the NPS will incur related administrative costs. If any of these requirements are not met, the law allows the Secretary of the Interior, acting through the NPS, to require a permit for the subject activity. Permit requirements are imposed by the superintendent under discretionary authority provided by 36 CFR 13.50, which allows the superintendent to restrict activities in NPS areas in Alaska. The general regulations for permits in 36 CFR 1.6 and 13.55 do not apply to permits issued for filming, still photography, and audio recording, which instead are governed by the statutory provisions in 54 U.S.C. 100905. The imposition of permit requirements, on a case-by-case basis, for filming, still photography, or audio recording does not require rulemaking under 36 CFR 13.50(c). Requiring a permit with reasonable terms and conditions in accordance with statutory requirements at 54 U.S.C. 100905 will not result in a significant alteration in the public use pattern of the area, will not adversely affect the area's natural, aesthetic, scenic or

cultural values, or require a long-term or significant modification in the resource management objectives of the area, because the permit requirement is limited in time and scope to the specific activities authorized by the permit, which contains terms and conditions that protect the values, resources, and visitors of the area.

13.122 Established conditions for removal of cabin for which a cabin permit has been denied, expired, or revoked

No conditions established at present (may require access permit).

13.160 Designated existing cabins, shelters or temporary facilities that may be shared for subsistence uses without a permit

No designations at present. All subsistence use requires permit from superintendent.

13.166 Established conditions and standards governing the use and construction of temporary structures and facilities for subsistence purposes, published annually

No conditions or standards established at present.

13.170 Designated cabins or other structures for general public use

The Priest Rock cabin is designated as public use and available for reservation at www.recreation.gov.

13.172 Established conditions and allocation system to manage the use of designated public

Reservations for the Priest Rock cabin are limited to 5 consecutive nights and 21 nights in a calendar year by the same person.

13.188(b) Established conditions for removal of temporary facility used in excess of 14 days

Individuals must remove facility, all personal property, and return the site to its natural condition.

These conditions are intended to protect the park from impacts to vegetation and soil and to ensure that personal items are not left in the park.

13.460 Closures or restrictions to the use of snowmobiles, motorboats, dog teams, and other means of surface transportation traditionally employed by local rural residents engaged in subsistence uses

See also 36 CFR 2.16, 2.17, 2.18, 3.6, 4.10, 4.30; 43 CFR 36.11(c)-(e).

13.485(a)(1) Permit specifications for harvesting standing timber greater than 3” diameter for subsistence purposes (house logs & firewood)

The superintendent may allow subsistence harvest of trees greater than 3” subject to the terms and conditions of a permit issued by the superintendent.

The above restriction serves to minimize impact to park resources and protect against overharvest.

13.485(a)(2) Restrictions on cutting of timber less than 3" in diameter for subsistence purposes

Stumps shall be 8 inches or less above the ground.

The above restriction is intended to make cut stumps visually blend in with the surroundings while minimizing safety hazards associated with timber harvest.

43 CFR, PART 36 TRANSPORTATION AND UTILITY SYSTEMS (Access Regulations)

36.11(c) Temporary closures to the use of snowmachines for traditional activities

No closures at present.

See also 2.18.

36.11(d) Temporary closures to the use of motorboats

No closures at present.

See also 3.3, 3.6.

36.11(e) Temporary closures to the use of non-motorized surface transportation

No closures at present.

See also 13.50, 2.16, 3.3, 3.6, 13.50.

36.11(f)(1) Temporary closures to landing fixed-wing aircraft

No closures at present.

36.11(f)(3)(ii) Established procedure for salvaging and removing downed aircraft

A permit is required from the superintendent before downed aircraft may be salvaged and removed from the NPS lands; violation of the terms and conditions of the permit is prohibited.

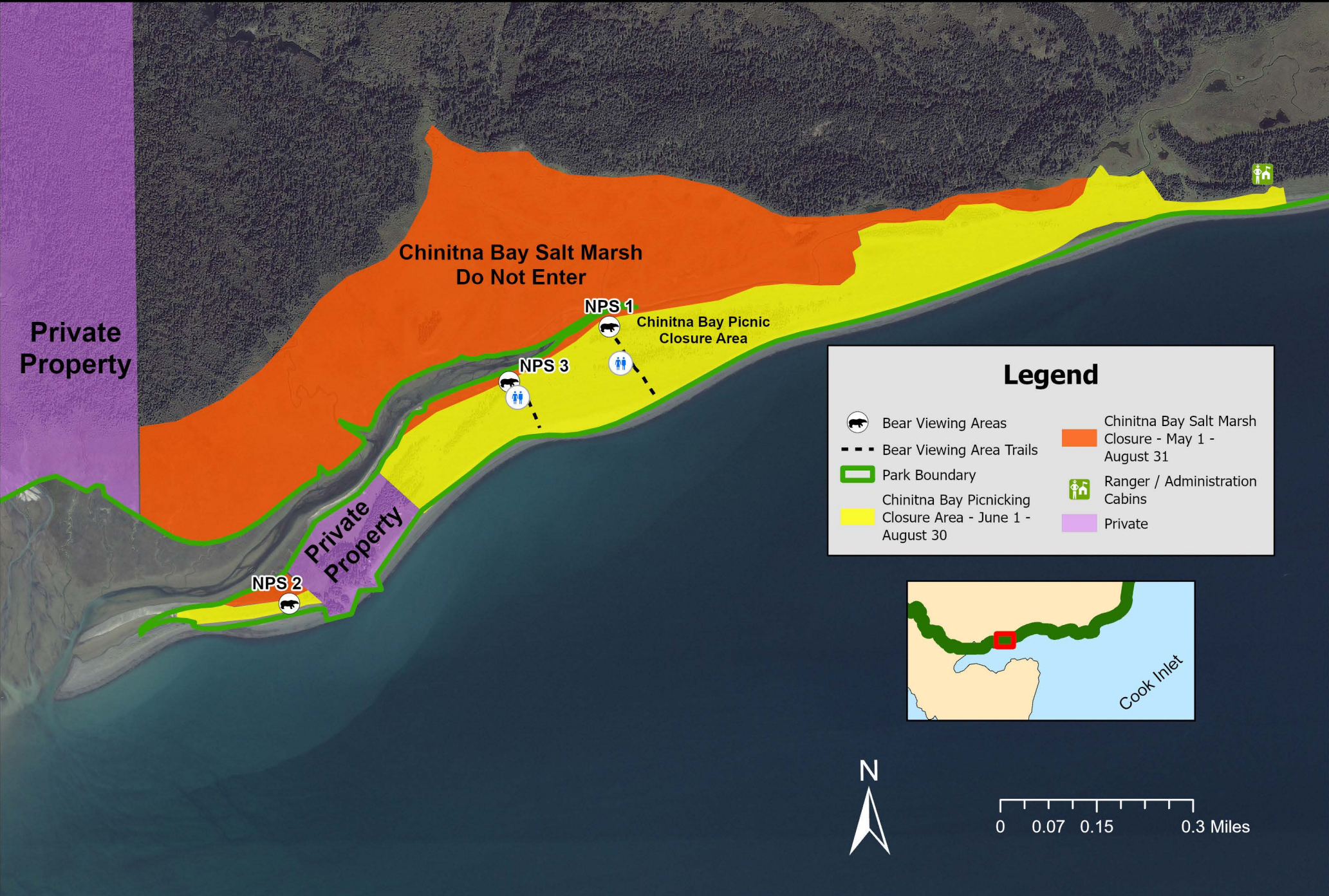
This requirement allows the superintendent to establish terms and conditions for salvage operations as necessary to protect resources, provide for public safety, and minimize impacts on visitors.

36.11(g)(2) Use of off-road vehicles (ORV) on existing trails

No designated trails. See also 4.10.

Chinitna Bay - Lake Clark National Park and Preserve Closure Areas

Alaska Region
National Park Service
U. S. Department of the Interior



Legend

- Bear Viewing Areas
- Bear Viewing Area Trails
- Park Boundary
- Chinitna Bay Picnicking Closure Area - June 1 - August 30
- Chinitna Bay Salt Marsh Closure - May 1 - August 31
- Ranger / Administration Cabins
- Private



Designated Area for First Amendment Activities - Port Alsworth

Lake Clark National Park and Preserve

Alaska Region
National Park Service
U.S. Department of the Interior



Legend

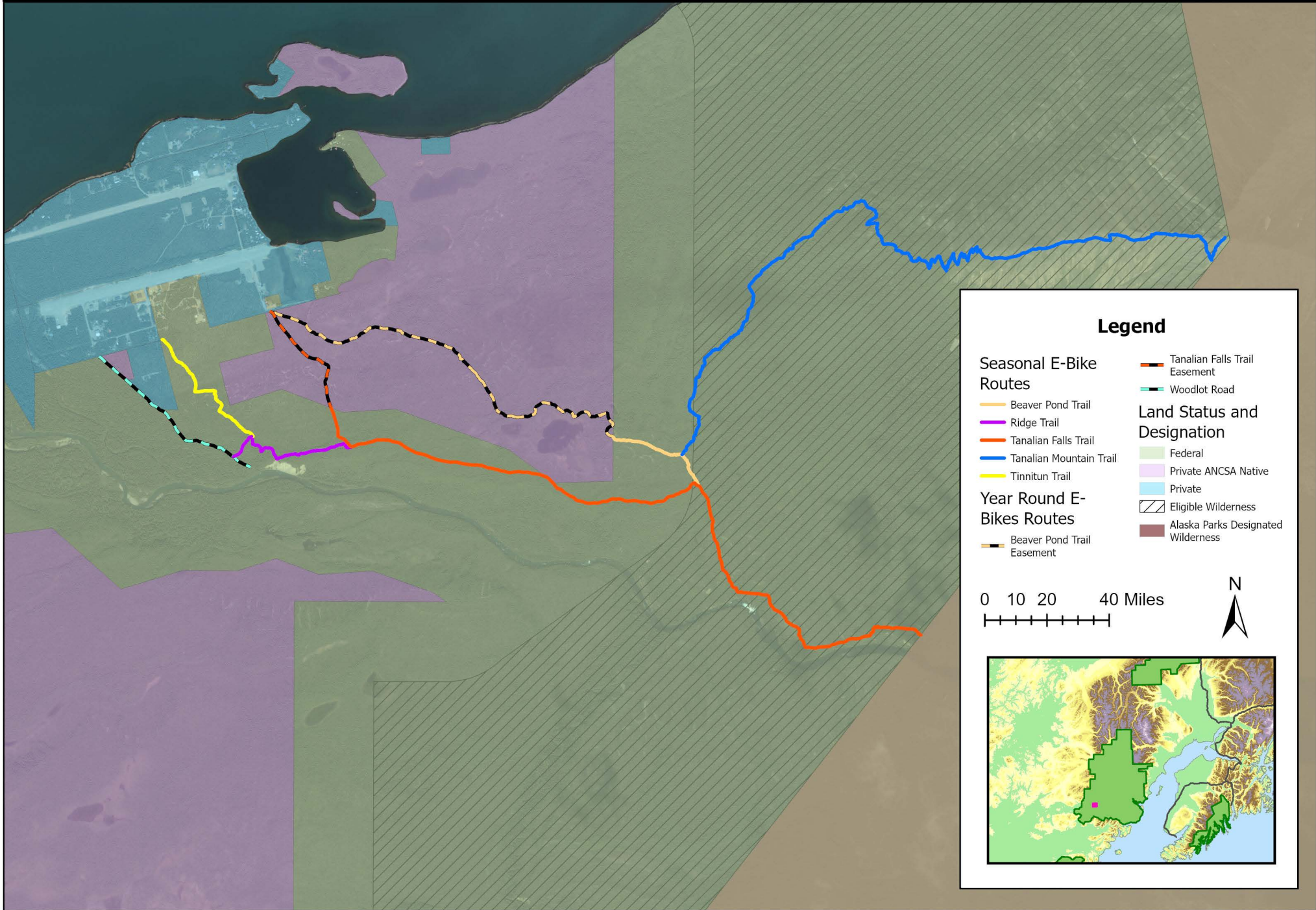
 First Amendment Protest Area

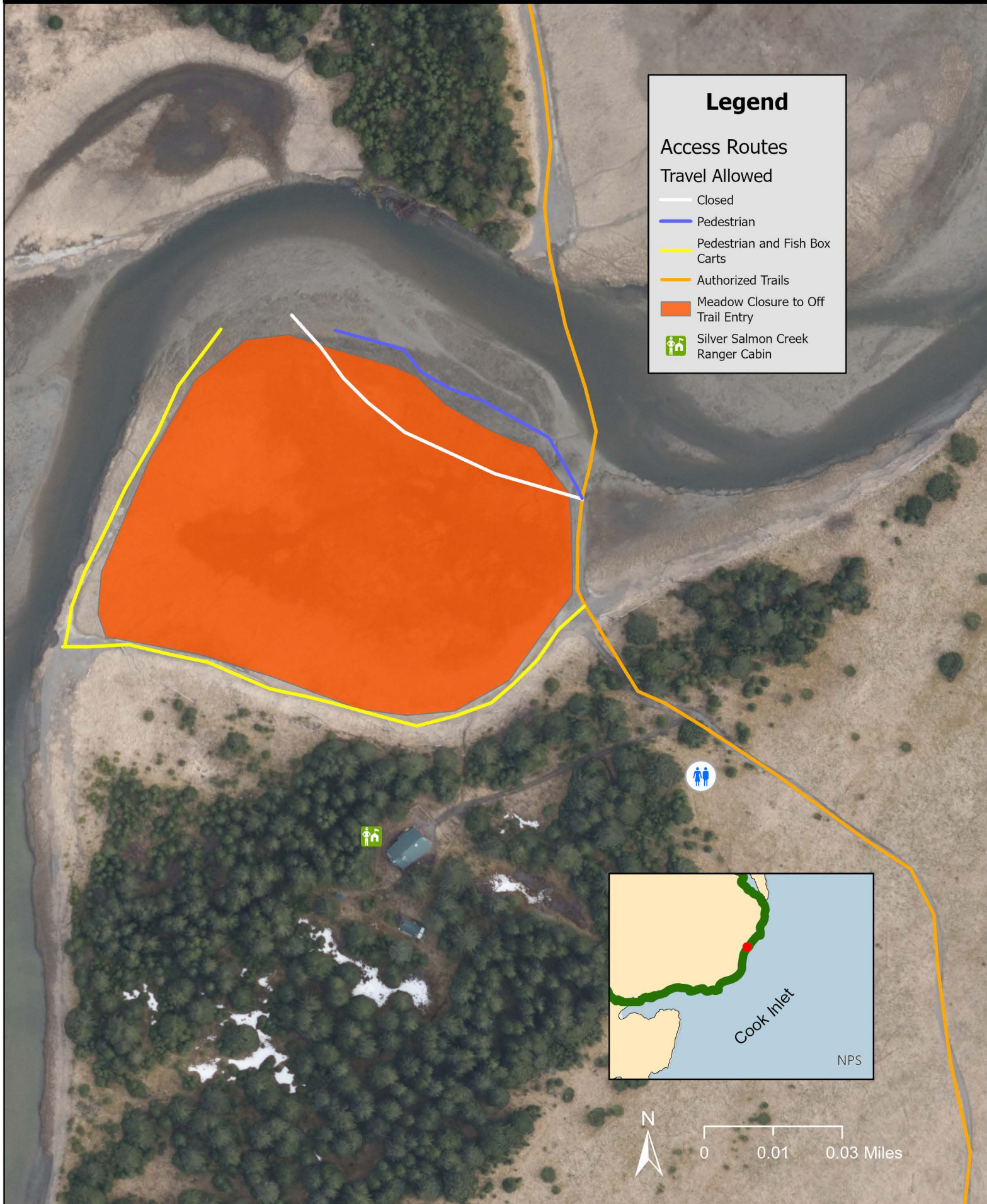


Authorized E-bike Trails

Lake Clark National Park and Preserve

Alaska Region
National Park Service
U.S. Department of the Interior





Silver Salmon Creek - Lake Clark National Park and Preserve

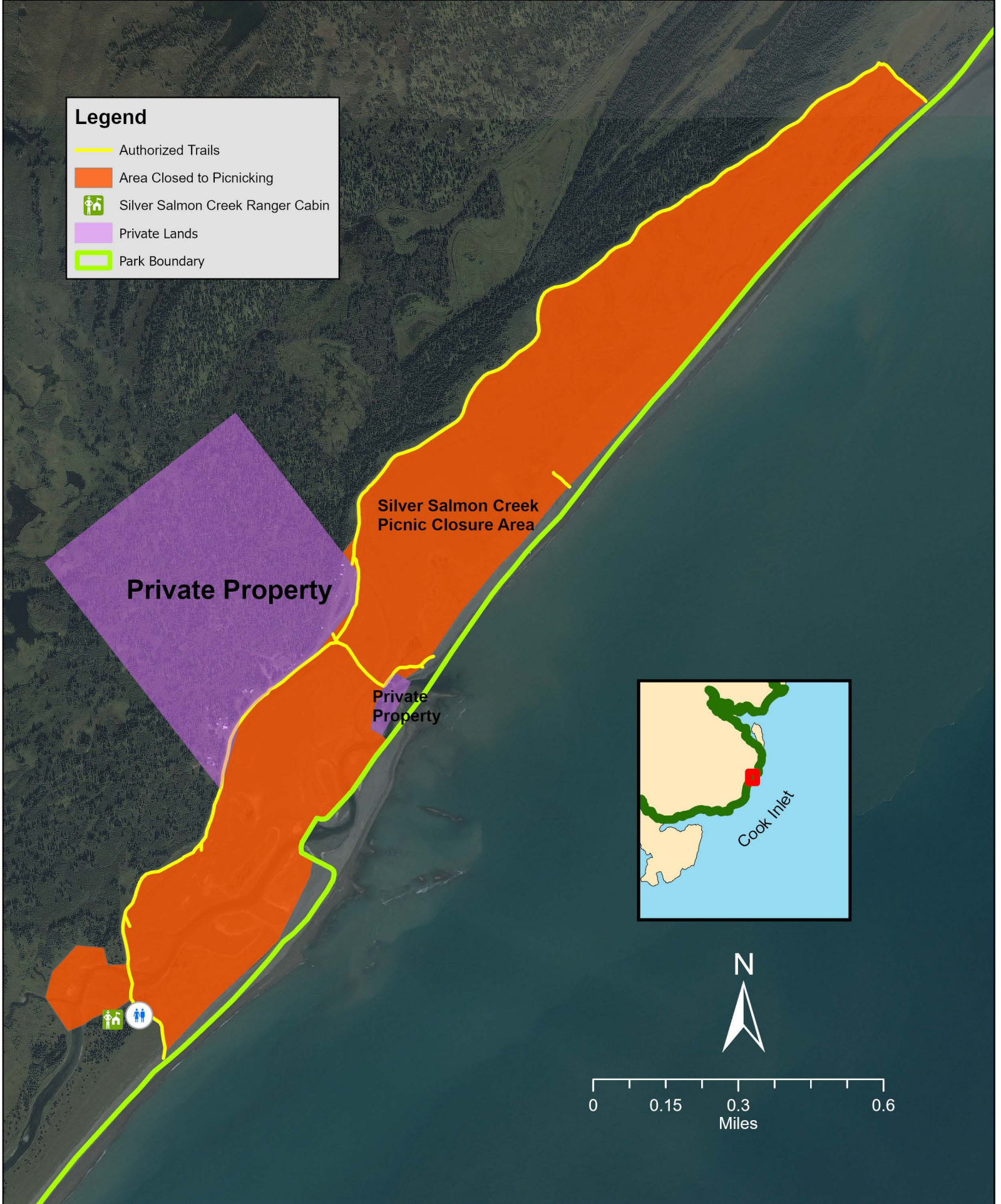
Area Closed to Picnicking - May 1 through October 1

Alaska Region
National Park Service
U. S. Department of the Interior



Legend

- Authorized Trails
- Area Closed to Picnicking
- Silver Salmon Creek Ranger Cabin
- Private Lands
- Park Boundary



Silver Salmon Creek
Picnic Closure Area

Private Property

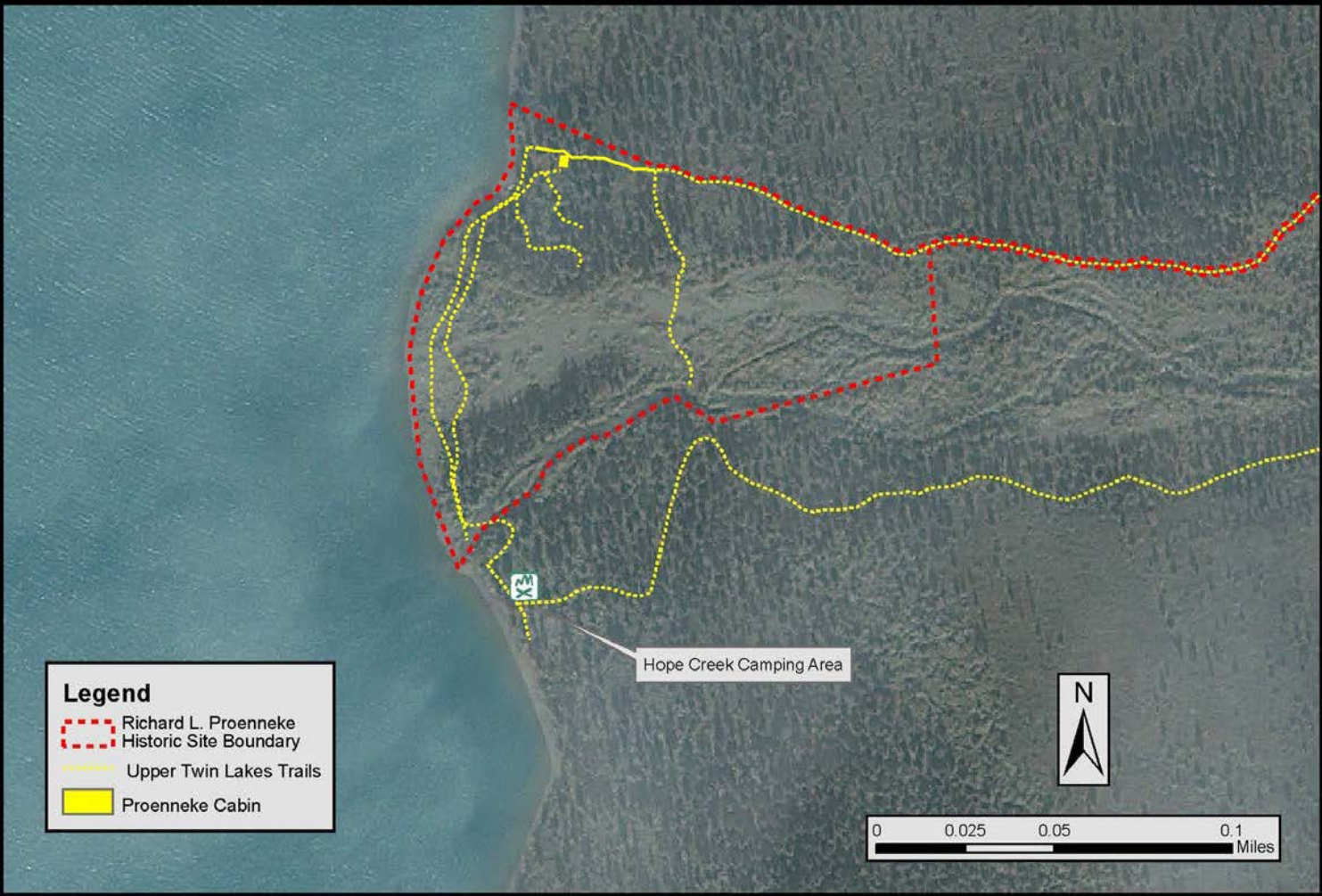
Private Property






Richard L. Proenneke Historic Site

Lake Clark National Park and Preserve

National Park Service
U.S. Department of the Interior



Legend

-  Richard L. Proenneke Historic Site Boundary
-  Upper Twin Lakes Trails
-  Proenneke Cabin

Hope Creek Camping Area

