



George Washington Memorial Parkway



This book belongs to: _____



Hello Junior Rangers!



With this book in your hands, you're already on your way to becoming a Junior Park Ranger! Use this booklet to plan your trip to the parks along George Washington Memorial Parkway. We encourage you to complete the activities in this booklet with family and friends.

Follow the directions below to begin your adventure.

1

Complete this booklet

Ages 6-9: complete at least 5 pages.
Ages 10+ : complete at least 8 pages.

2

Check your work

Show your completed booklet to a Park Ranger, friends, or family.

3

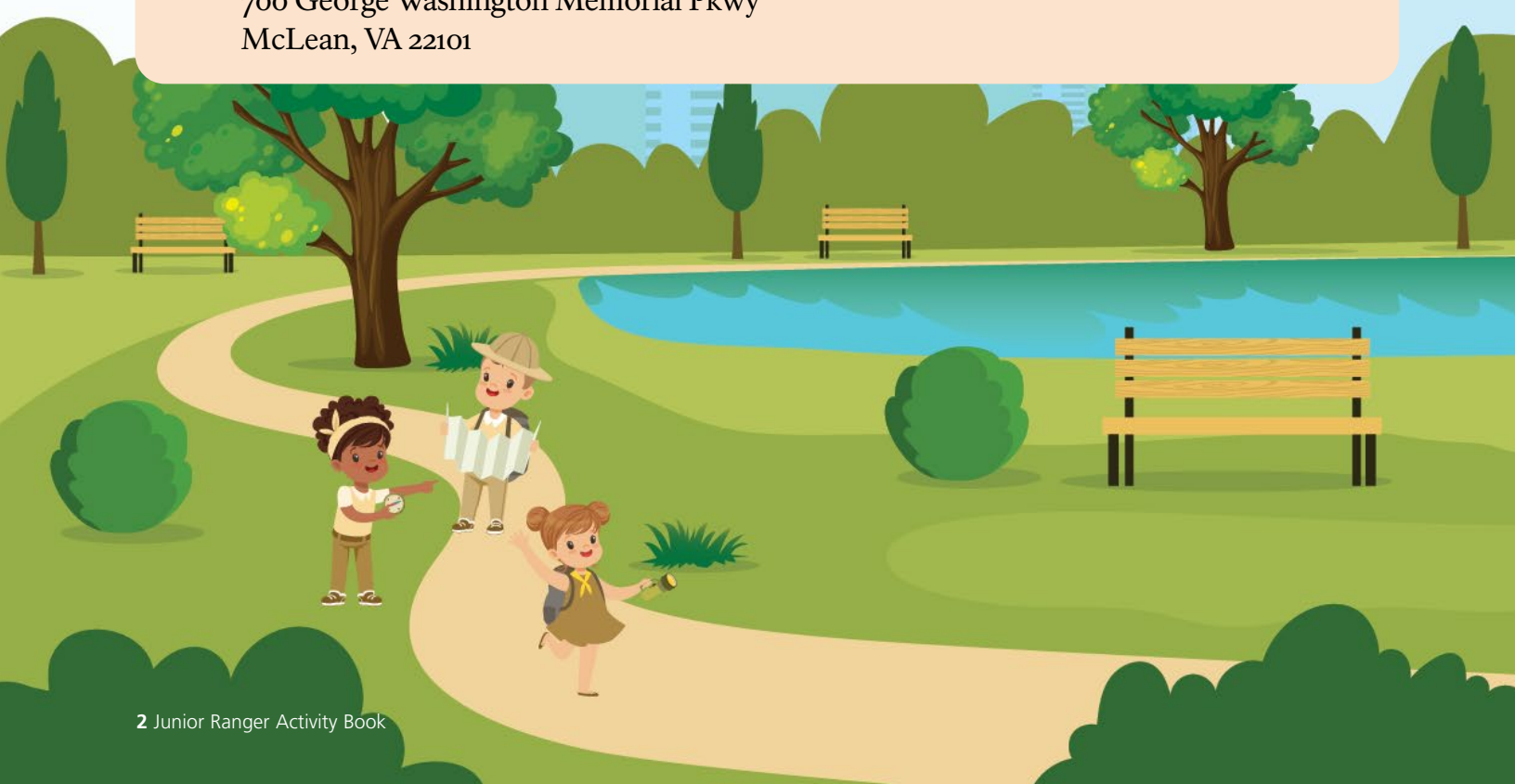
Get your Junior Ranger badge!

- Complete at a park: Return your completed book to a ranger at one of the parks in this book.
- Complete at home: You can also mail your completed book with your return address to:

**George Washington Memorial Parkway
Headquarters
ATTN: Junior Ranger Program
700 George Washington Memorial Pkwy
McLean, VA 22101**

Your address:

.....
.....
.....
.....
.....



1 Get ready for the park

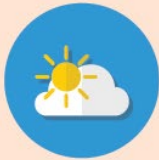
Always check the weather before you visit the park. A hot summer day can quickly turn into a rainstorm. Gentle snowfall can turn into a blizzard. A park explorer is always weather-ready!

Activity

- Visit [weather.gov](https://www.weather.gov) and check the weather forecast for the days you will visit the park. **Circle the image that best describes the weather today at the park.**



Sunny



Mostly sunny



Light rain



Cloudy



Heavy rain



Storm



Snow



Windy



Sleet

Activity

- How will you prepare for the weather at the park? Look at the items below. Discuss with your family and friends which items you will bring with you. Circle your answers below.



Winter hat



Sturdy shoes



Hat



Sunglasses



Raincoat



Jacket



Map



Water bottle



Umbrella

2 Great Falls Park



Great Falls Park, an 800-acre park located along the Potomac River, is one of the most spectacular natural landmarks in the Washington DC metropolitan area. The natural beauty of Great Falls is unmatched with its series of steep, jagged rocks that flow through the narrow Mather Gorge.

Activity: Leave No Trace!

- People can help protect special places like Great Falls for future generations. The 7 Leave No Trace Principles help visitors experience natural, wild places while protecting the plants and animals that live there. **Look at the pictures of Leave No Trace principles below. Are the visitors in the pictures doing the right thing? Circle right or wrong.**



- 1. Know Before You Go**
Know the rules for where you're going and what to bring with you.

Right or Wrong?



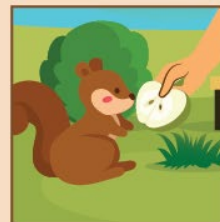
- 5. Be Careful With Fire**
Camp fires in Great Falls Park are not allowed.

Right or Wrong?



- 2. Choose The Right Path**
Stay on the trail while hiking to reduce damage.

Right or Wrong?



- 6. Respect Wildlife**
Protect wildlife by not feeding animals and by storing food properly.

Right or Wrong?



- 3. Trash Your Trash**
Take your trash with you when you leave natural areas.

Right or Wrong?



- 7. Be Kind To Other Visitors**
Respect visitors and their experiences in nature.

Right or Wrong?



- 4. Leave What You Find**
Leave plants, rocks, and artifacts for others to enjoy.

Right or Wrong?

3 Turkey Run Park

Turkey Run Park preserves a vertical slice of the Potomac Gorge ecosystem. Trails in Turkey Run Park cross through several of the distinct habitats that make up this ecosystem. Wildlife sightings change with the seasons.

Activity: Animal Tracks Match-up

- When you are out on a hiking trail along the Turkey Run Park, you may discover that others have been there before you. They leave tracks in the mud or the sand. Let's identify their tracks!



1



2



3



4



5



6



7



8



4

Theodore Roosevelt Island

Theodore Roosevelt Island is a memorial, intended to preserve the memory of the 26th president of the United States. On the island, there is a monument to Theodore Roosevelt. Conservation of the natural world was important to Roosevelt. This island provides an ideal setting for examining such concepts as migration, adaptations and habitat.

Activity: Let's color!

- As President, Theodore Roosevelt created more than 50 federal bird reservations. Let's grab your crayons or markers and color a local species that is one of the smallest birds in the world: the ruby-throated hummingbird!



5 U.S. Marine Corps War Memorial

The United States Marine Corps War Memorial represents this nation's gratitude to Marines and those who have fought beside them. While the statue depicts one of the most famous incidents of World War II, the memorial is dedicated to all Marines who have given their lives in defense of the United States since 1775.

Activity

- This statue is massive, but very detailed. Let's count the number of hands on the memorial!

Answer: There are hands on the statue.



Activity

- The war memorial was inspired by the iconic 1945 photograph taken by an Associated Press combat photographer. Go around the memorial and try your best to answer the following questions:



Question 1: What is the name of the photographer?

Answer:

Question 2: The sculptor used that photo to make the sculpture. What was his name?

Answer:

6 Netherlands Carillon

The simple dedication on the Netherlands Carillon expresses the gratitude of the Dutch people for American aid received during and after World War II. The carillon itself symbolizes a friendship between the people of two countries.

Activity: Wild Animal or Pet?

The area around the carillon is home to many wild animals. Can you tell if the creature is a park animal or a house pet? Circle your answers and tell us their names.



Wild animal House pet



Wild animal House pet



Wild animal House pet



Wild animal House pet



Wild animal House pet



Wild animal House pet



Did you know?

There are two bronze statues of lions standing guard at the Netherlands Carillon. Almost all countries have one: a national animal. The lion symbolizes the royal family of the Netherlands protecting their country.



7 Lady Bird Johnson Park

Lady Bird Johnson Park is a constructed island that extends along the Virginia shore of the Potomac River. This park was renamed in 1968 to honor Claudia “Lady Bird” Johnson, who served as First Lady of the United States in the 1960s. It is a unique landscape within the wider, nationally significant areas of the Mount Vernon Memorial Highway and the George Washington Memorial Parkway. There are two memorials located inside Lady Bird Johnson Park: the Lyndon Baines Johnson Memorial Grove on the Potomac and the Navy and Merchant Marine Memorial.

Activity: Let's practice beautification!

- Ladybird Johnson championed beautification - making cities and roadways look attractive so that people can enjoy more time outside. **Practice beautification below! Draw some flowers, add a bench or a picnic table, or plant some trees to make this an area you'd like to visit:**



8 Jones Point Park

The Jones Point Lighthouse is one of the last riverine lighthouses in the country and the only one still standing in the Chesapeake Bay area. Today it is the focal point of Jones Point Park and a clue to the area's history as a busy commercial center and naval base.



Activity: Write your journal!

- Working as a lighthouse keeper was difficult and dangerous work. They had to maintain the light and foghorn, which required regular upkeep. **Imagine that you lived and worked at Jones Point Lighthouse in the late 19th or early 20th century. Write a journal entry about a day in the life of a lighthouse keeper. What do you think the purpose of a lighthouse on a river was?**

A large, rectangular area of aged, yellowish paper with a torn edge, serving as a journal template. It contains ten horizontal dotted lines for writing.

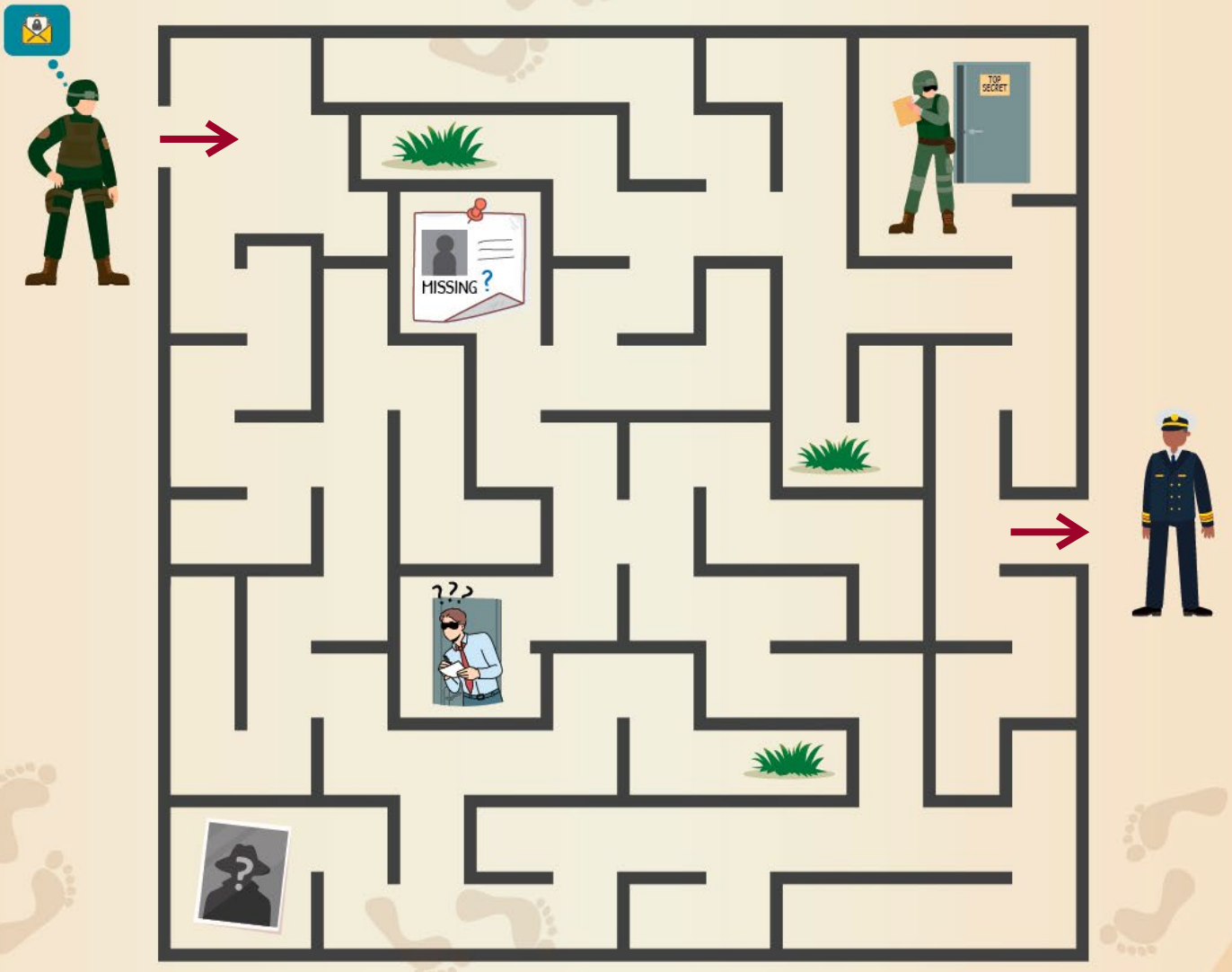


9 Fort Hunt Park

Today, Fort Hunt Park is a place to enjoy nature and the company of others. But during World War II, it was a top-secret military facility! During the war, more than 120,000 American soldiers were captured in Europe. The soldiers knew they could ask their friends at Fort Hunt for help by writing a letter. Officers at Fort Hunt sent back supplies to help the prisoners keep fighting and come home.

Activity: Maze of Secrets

- At Fort Hunt, also known as PO Box 1142, American soldiers learned to operate like spies. They sneak information to each other. **Help this soldier navigate a maze of secrets and deliver his message to the right place!**



10 Dyke Marsh Wildlife Preserve

Just down the river from Alexandria, Virginia, Dyke Marsh is one of the largest remaining freshwater tidal wetlands in the Washington metropolitan area. It is home to many species that can only survive in wetlands. Wetlands are water-laden environments with an enormous diversity of life forms. The preserve supports 271 species of birds, 22 mammals, and 24 reptiles and amphibians, including white-footed mice, gray squirrels, cottontail rabbits, short-tailed shrews, river otters, red foxes and whitetailed-deer.

Activity: Spot the Difference!

Find 5 differences between the 2 pictures!



11

Mount Vernon Trail

The Mount Vernon Trail is an 18-mile paved multi-use trail that stretches from George Washington's Mount Vernon to Theodore Roosevelt Island. The trail is great for running, cycling, leisurely walks, and is dog-friendly (leashed pets). This is also home to many species of wildlife.

Activity: I'm Safe! On My Bike



BINGO

Place a sticker on or mark what you see on your bike route. Try to find three things in a row!

12 Map Symbols



Activity

Match each symbol with its meaning:



Trailhead



Pets on leash



Ranger station



Event facility



Campground



Picnic shelter



Trail grade



Surface is very soft

Activity

Imagine that you found a new spot in the park and want to mark it on the map. Draw a symbol helps visitors locate the spot.

A large, empty white rectangular box intended for drawing a map symbol.

What does it mean?

13 Hey, Ranger!



Activity: Write your journal!

- You've just been hired as a national park ranger at George Washington Memorial Parkway. Here are the first four questions you get asked. What are your answers?

Hey, Ranger!

Can I feed this friendly squirrel?

- Yes
- No

Why?

Hey, Ranger!

What made you want to become a park ranger?



Hey, Ranger!

Can I pick the flowers?

- Yes
- No

Why?

Hey, Ranger!

What's your favorite trail?

Draw your face on the ranger!



CONGRATULATIONS!

.....

has successfully completed the requirements to be an official National Park Service Junior Ranger at George Washington Memorial Parkway.

JUNIOR RANGER PLEDGE

As a Junior Ranger, I promise to explore the wonders of national parks and nature all around me, to learn the human stories of the past and present, to learn the importance of every living thing, to live every day as Earth's best friend, and to help others do the same.

.....

Junior Ranger signature

Age

.....

Date

.....

Ranger signature

George Washington Memorial Parkway sites with junior ranger programs:

1. Great Falls Park
 - Great Falls Park Book
 - Captain George Pointer Book
2. Clara Barton National Historic Site
3. Glen Echo Park
4. Theodore Roosevelt Island
 - Theodore Roosevelt Island Book
 - United States Colored Troops Book
5. Arlington House, the Robert E. Lee Memorial
6. Fort Hunt Park

More Parkway sites to explore:

- Turkey Run
- Fort Marcy
- US Marine Corps War Memorial
- Netherlands Carillon
- Jones Point
- Dyke Marsh
- Mount Vernon Trail
- LBJ Memorial Grove
- Arlington Memorial Bridge

National Park Service U.S. Department of the Interior

George Washington Memorial Parkway Headquarters

700 George Washington Memorial Parkway
McLean, Virginia, 22101
www.nps.gov/gwmp
(703) 289-2500

