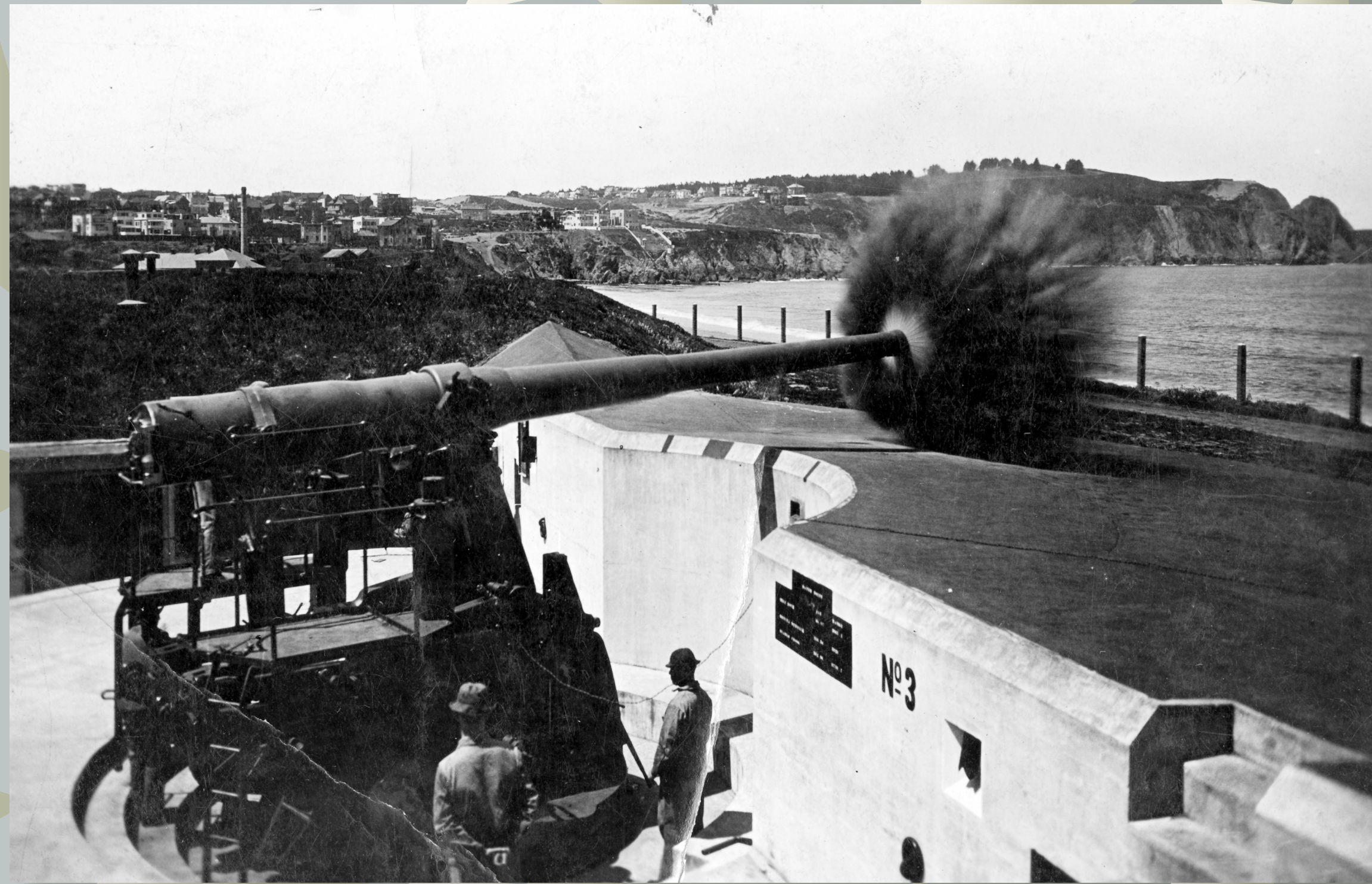




## BRINGING DEFENSE INTO THE 20TH CENTURY (1884-1932)

A new era of defense construction begins. Westward expansion and industrialization in the U.S. during the late 1800's led to growth as a great world military power. San Francisco was identified as the second most important strategic military site in the United States.



GGNRA, Park Archives, Coastal Artillery Postcard Collection, GOGA-3027  
Battery Chamberlin circa 1915

**1890 - Life Saving Station developed by U.S. Coast Guard at Fort Point**

**1891 - Endicott fortifications built**  
New reinforced-concrete gun batteries constructed on both sides of the Golden Gate and in the inner harbor at Angel Island and Fort Mason.

**1893 - Fort Miley**  
Land for Fort Miley is acquired and fortifications are constructed.

**1898-1902 - Spanish-American War and Philippine-American War**  
The country's first entry into international conflict. Troops embark for the Philippines from the Presidio of San Francisco. Presidio expands with construction of new buildings to support embarking and returning troops.

**1899 - Letterman General Hospital is established**  
Innovative military hospital is constructed to treat thousands of returning sick and injured troops.



GGNRA, Park Archives, TASC Negative Collection, GOGA-25301.0943  
Fort Barry Baseball Team circa 1910

**1902 - Fort Baker built**  
This Endicott-period post represents the Army's interest in providing its soldiers with a healthier living environment with permanent ventilated barracks and clean running water.

**1906 - San Francisco Earthquake and Fire**  
General Funston orders troops into the city to establish martial law after the disaster. Areas of the Presidio and Fort Mason are used as refugee encampments.



GGNRA, Park Archives, Edwin S. Long Family Album, GOGA-3411.058  
Man and dog, Fort Baker, c.1890-1906

**1908 - Fort Barry**  
Isolated Endicott-period post equipped with facilities supporting the needs of its soldiers including a hospital, gymnasium, post exchange, and bakery. Fort Barry defends target threats further in the Pacific rather than just Golden Gate strait.

**1912 - Fort Winfield Scott designated a Coast Artillery post**  
Fort Scott, located on the western edge of the Presidio, assumes command headquarters for 15 batteries throughout the Presidio and Fort Point.

**1914-1919 - World War I**

**1915 - Panama Pacific International Exposition opens in leased areas of the Presidio and Fort Mason**

**1915 - Establishment of Fort Mason Depot**  
Army constructs wharves, docks and storehouses to facilitate the shipping of men and materiel to the Pacific. The Depot will later become San Francisco Port of Embarkation.



GGNRA, Park Archives, Ralph A Durland Papers, GOGA 35290.019  
Battery Mendell circa 1908

**1917 - Fort Funston**  
Laguna Merced Military reservation renamed for General Funston.

**1921 - Crissy Army Airfield established**

First Army coastal defense airfield on the Pacific coast; built on the site of the Panama Pacific International Exhibition's automobile racetrack and flight demonstration field.

**1925 - Harbor Defenses of San Francisco Command established at Fort Winfield Scott**  
Fort Scott is now responsible for Forts Baker, Barry, Cronkhite, Funston, and Miley, to protect the coastline from enemy invasion and to ensure friendly shipping.



GGNRA, Park Archives, Dora Devol Brett Collection, GOGA 32485.136  
Lieutenant Sweeley, Crissy Field