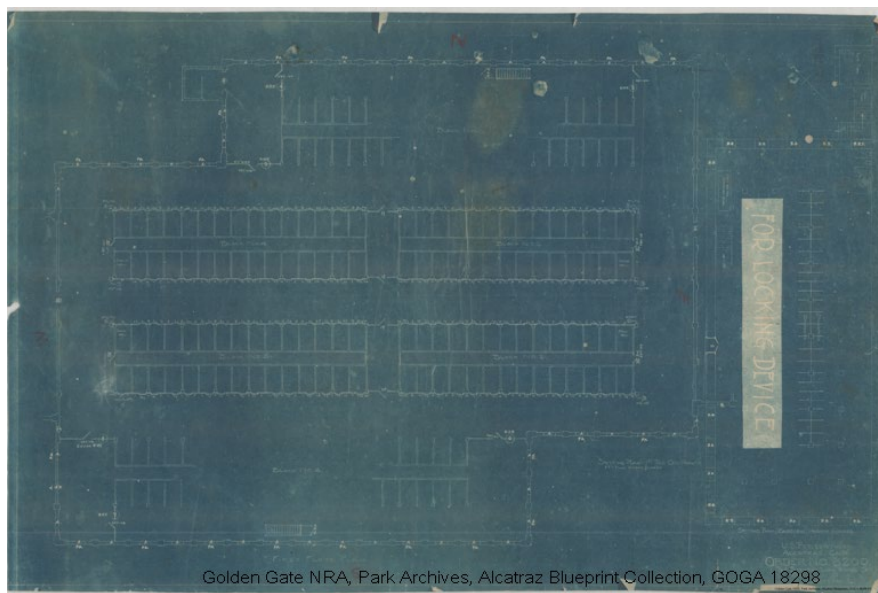




Alcatraz Blueprint Collection, 1929-1959

GOGA 18298



Golden Gate NRA, Park Archives, Alcatraz Blueprint Collection, GOGA 18298

Golden Gate National Recreation Area
ATTN: Park Archives and Records Center
Building 201, Fort Mason
San Francisco, CA 94123
[Mailing Address]

Park Archives and Records Center
Presidio of San Francisco
Building 667 McDowell Ave.
San Francisco, CA 94129
[Physical Address]

<http://go.nps.gov/gogacollections>

Phone: 415-561-2807

Fax: 415-441-1618

Table of Contents

<i>Introduction</i>	<i>i</i>
Golden Gate National Recreation Area	i
Park Description	i
Park Archives and Records Center	i
Historical Note.....	i
Copy Services.....	ii
Rights and Publications	ii
Legal Status of Holdings	iii
Donations to the Collection	iii
How to Use This Finding Aid.....	iii
Contacts	iv
<i>Alcatraz Blueprint Collection</i>	<i>1</i>
Scope and Content	1
Title	1
Dates.....	1
Collection Number	1
Creator	1
Volume	1
Provenance	1
Scope Note	1
Preferred Citation	2
Index/Added Entries	2
Processing Information.....	3
Agency History	4
Timeline.....	4
Collection and Series Description	5
<i>Folder List</i>	<i>7</i>
<i>Appendices</i>	<i>8</i>
1. Item List by Drawing Number	9
2. Alphabetical Item List	23

Introduction

Golden Gate National Recreation Area

Park Description

Golden Gate National Recreation Area was established as a unit of the National Park Service by an Act of Congress on October 27, 1972. Golden Gate National Recreation Area encompasses a broad range of territories totaling some 80,000 acres in and around the Bay Area of San Francisco, California, as well as Muir Woods National Monument (established January 9, 1908) and Fort Point National Historic Site (established October 16, 1970). The park contains a great diversity of cultural and natural resources. The park's museum collections include archeological materials, museum objects, and archives dating from pre-contact to the present. These cultural resources are preserved and maintained for the public by the Division of Cultural Resources and Museum Management, which includes the Park Archives and Records Center (PARC).

Golden Gate National Recreation Area has been collecting museum and archival collections since its earliest days as a national park. It holds almost five million three-dimensional and documentary artifacts. These are used by park staff, park associates and the public to manage, interpret and understand the various themes and resources of the park.

Park Archives and Records Center

Historical Note

Archival collections acquired since the earliest days of Golden Gate National Recreation Area document the history and activity of the various sites and groups related to areas of the park, as outlined in the park's Scope of Collection Statement (1997). These include the United States Army (Bear Flag Revolt, Civil War, Spanish-American War, Mexican War, World War I, Army Air Service, Coast Artillery, Army medical facilities and issues, World War II, Army support during natural disasters, Viet Nam War, and Operation Desert Storm); Alcatraz (Army fortress, Army Disciplinary Barracks, and U.S. Penitentiary); the natural resources conservation movement resulting in the establishment of Muir Woods National Monument; agriculture in the Marin Headlands; Point Reyes Peninsula and Bolinas Lagoon areas; U.S. Lifesaving/Coast Guard Services; San Francisco maritime history (most of this material was transferred to the San Francisco Maritime National Historical Park at the time of its separation from Golden Gate NRA in 1988); San Francisco Earthquake and Fire of 1906; Panama Pacific International Exposition of 1915; and preservation of open space in the Bay Area. Also included in the PARC are many of the administrative records of the early park years. These document the development and expansion of Golden Gate National Recreation Area, planning, public involvement, and public programs and events in the park throughout its history.

The Park Archives and Records Center is located in an historic brick building, formerly a cavalry stable, on the Presidio of San Francisco. It was established in 1994 to receive approximately 4,000 cubic feet of transferred Army records and 300 cubic feet of archives and special collections from the Presidio Army Museum, following the official closure of the Presidio as an

active Army post. It also houses all documentary (two-dimensional) materials pertaining to themes of the park as outlined in the Scope of Collection Statement (1997). The collections of the Park Archives and Records Center continue to grow annually, through the donation of materials by private individuals, transfer of inactive park records, and acquisition of valuable information and image collections relating to the scope of collections for the park. The Center contains facility records transferred from the United States Army pertaining to the Presidio of San Francisco, Forts Funston, Miley, Mason, Scott, Baker, Barry and Cronkhite, as well as other coast defense sites within the Bay Area, plus facility records created by the National Park Service for various park areas. Each year, additional material held by the Park Archives becomes available for research through various projects to arrange and describe portions of the collection. New materials are continually becoming available for use to support many in-park projects and private research endeavors.

All materials in the PARC are open to the public, with the exception of inactive park records with privacy and proprietary information concerns. Collections and archives support services are available for walk-in research at scheduled times throughout the week (check with Archives staff for current schedule). Appointments are also available for research if unable to visit during walk-in hours.

Visiting the PARC for Research

The PARC is located in an historic brick building, formerly a cavalry stable, on the Presidio of San Francisco. Collections and archives support services are available for walk-in research during open hours or by appointment. Please contact the PARC (see below) for the current schedule of reference hours.

Copy Services

Photocopy equipment is available on-site at the Archives. Photocopies can be provided of all standard sizes as well as oversize materials. Color photocopying is available by special arrangement. Park staff performs all photocopying and fees are charged to recover the costs to the program. Duplicate photographs are available by order. Duplication fees are charged for all photographic work. Other media may be duplicated by special arrangement. Consult with Archives staff for current charges and payment information.

Rights and Publications

Researchers should review current regulations for use of archives materials, including any intended public or commercial use. Copies of archives collection materials are provided to researchers under the Fair Use provisions of the Copyright Law (Title 17, U.S.C.). Researchers must complete a Permission to Publish Contract with the Park Archivist for any other intended use of these materials (such as publication or exhibit). This contract spells out how photographic or documentary material may be acquired and used and specifies correct citation information, as well as processes which may or may not be applied to images or documents from the collections. Archives staff will be happy to consult with individual researchers regarding their needs for commercial or public use of materials from the collections.

Legal Status of Holdings

Many holdings of the Golden Gate Park Archives and Records Center were acquired by the Presidio Army Museum or Park departments prior to the formal establishment of the archives program, and were therefore accepted without formal accessioning procedures. Little documentation on the provenance (or source) exists for most materials acquired by the Army prior to 1994, and for some materials acquired by the park during its early history (1970s). All materials received by the park since approximately 1980 have been formally accessioned and the park archives maintains on file either a formal Deed of Gift or a documented Field Collection form. For collections where provenance cannot be determined, the archives assumes that it owns the property rights to these materials, but does not own the copyright. It is the responsibility of the researcher to acquire permission from the copyright holder to cite, quote, or reproduce significant portions of any collection. The archives staff will assist researchers desiring to cite, quote, or publish portions of these early collections in determining, if possible, the copyright holder.

The Park Archives and Records Center also holds many collections developed by or for various government organizations or operations. These materials are considered to be in the public domain and may be used, cited, and quoted without restriction, provided they are properly credited to the archives and the collection. The archives contains no national security classified materials of any type.

Consult with archives staff for additional assistance.

Donations to the Collection

The Park Archives accepts donations of historic material which meet the criteria established in the Scope of Collections Statement. Photographs, scrapbooks, personal correspondence, mementos, artifacts, and other materials which meet the scope of collecting and do not duplicate existing holdings will be considered for acceptance into the permanent museum collections of Golden Gate National Recreation Area. The National Park Service maintains its museum collections in perpetuity as collections that support the mission and programs of the individual receiving park, but makes no guarantee of public exhibit of its museum collection material. If you own materials that may be related to the themes of this park, please consult with an archivist regarding deposit of these materials in the park's museum collections. If accepted, your materials will be legally transferred to the ownership of the park through a Deed of Gift process.

How to Use This Finding Aid

This aid contains information on the contents and significance of a particular collection. Most archives finding aids contain the following elements: repository information, collection history (including source or provenance) and description of archives' arrangement and descriptive activities; biographical or historical note on individual or corporate creator of the collection; series descriptions of the various groupings of material in the collection; a listing of the containers of the collection and their contents, usually to the level of the individual file folders, though some materials may be listed item by item. The finding aid also contains a Table of Contents and an Index to assist researchers in locating sections, topics or names of interest to

them. After reviewing the finding aid, please discuss your specific needs with the archivist who will locate and retrieve the containers holding materials of interest for your research.

Please follow all Archives rules and regulations regarding research, the use of the research facility, and the handling of collection materials. These rules exist for the protection of the collections to ensure that they remain available and usable for generations to come. If you notice anything which appears to be out of order or damaged, please do not move it, but notify the archivist on duty.

Contacts

For additional information on the use of archival collections at the Golden Gate National Recreation Area, please write or call the following:

Mailing Address:

National Park Service
Golden Gate National Recreation Area
Attn: Park Archives and Records Center
Fort Mason, Bldg. 201
San Francisco, CA 94123

Physical Address:

Park Archives and Records Center
Presidio of San Francisco
Building 667 McDowell Avenue
San Francisco, CA 94129
Phone: (415) 561-2807
Fax: (415) 441-1618

Alcatraz Blueprint Collection

Scope and Content

Title

Alcatraz blueprint collection

Dates

1929-1959 (bulk 1938-1941)

Collection Number

GOGA 18298

Creator

U.S. Bureau of Prisons

Volume

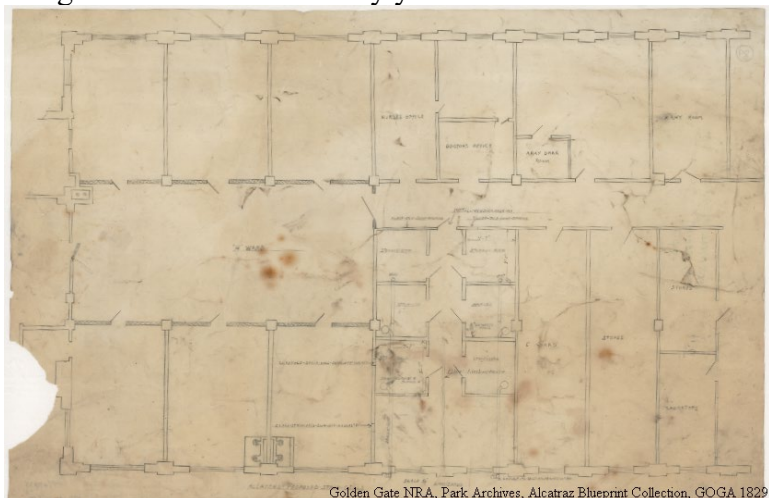
445 items in 26 map folders and 18 rolls

Provenance

Salvaged by GGNRA Park Technicians after the Bureau of Prisons left the island

Scope Note

The collection consists of 445 drawings related to structures and activities on Alcatraz Island. The majority of the items are architectural drawings of structures constructed or modified during the Federal Penitentiary years.

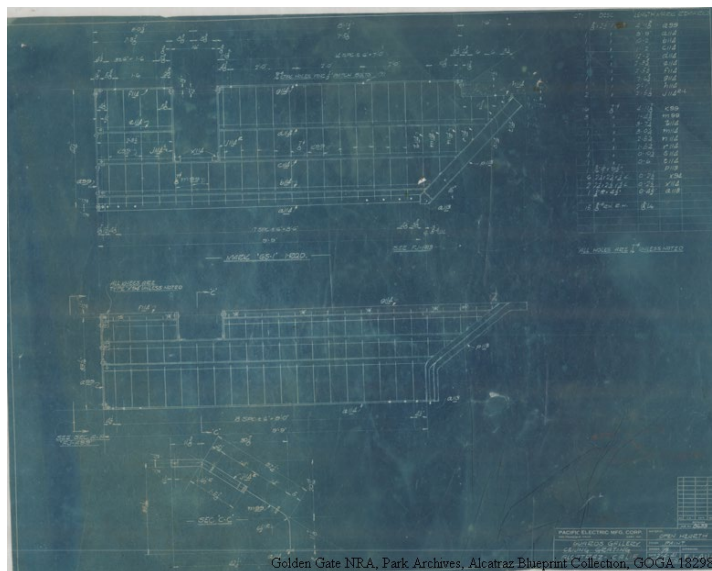


Significance: At this time, these architectural drawings are the most original and complete set known to have survived for the time period 1929-1959. They are valuable for maintenance of and research on buildings and infrastructure on Alcatraz Island.

Related Records: Please note that this list is not comprehensive. It is intended as an aid to researchers. For more complete information, contact the reference archivist.

GOGA 17591 Coastal defense and Alcatraz film, ca. 1920-1959
GOGA 17934 Alcatraz Phil Dollison photo collection
GOGA 18360 Alcatraz map collection, 1847-1974
GOGA-1766 PAM slides
GOGA-2282 Don Denevi research files, 1949-1980
GOGA-2316 Interpretation photographs
GOGA-2432 Drawings – Historic Structure Report, 1900-1963
GOGA-2587 Building plans, 1930-1937
GOGA-2863 Alcatraz cellhouse – Historic Structure Report Addendum
National Archives & Records Administration, Record Group 129
National Archives & Records Administration, Record Group 121

Condition: Most of the drawings are in poor condition. A significant number of them are stained and soiled and many have large areas where information is lost. Staff will create a photocopy duplicate for researchers to use unless there is a compelling reason for the originals to be handled.



Gaps: Gaps may be numerous as these documents were salvaged and the number of originals is unknown.

Preferred Citation

[Item description], GOGA 18298, [Folder number], Alcatraz blueprint collection, Golden Gate National Recreation Area.

Index/Added Entries

Prison Industries California
United States Penitentiary, Alcatraz Island, California
United States. Bureau of Prisons

Processing Information

Processed by the staff of the San Francisco Maritime National Historic Park, J. Porter
Shaw Library, updated for PARC by Sarah Talley
Completed in 1986, updated in March 2002

Agency History

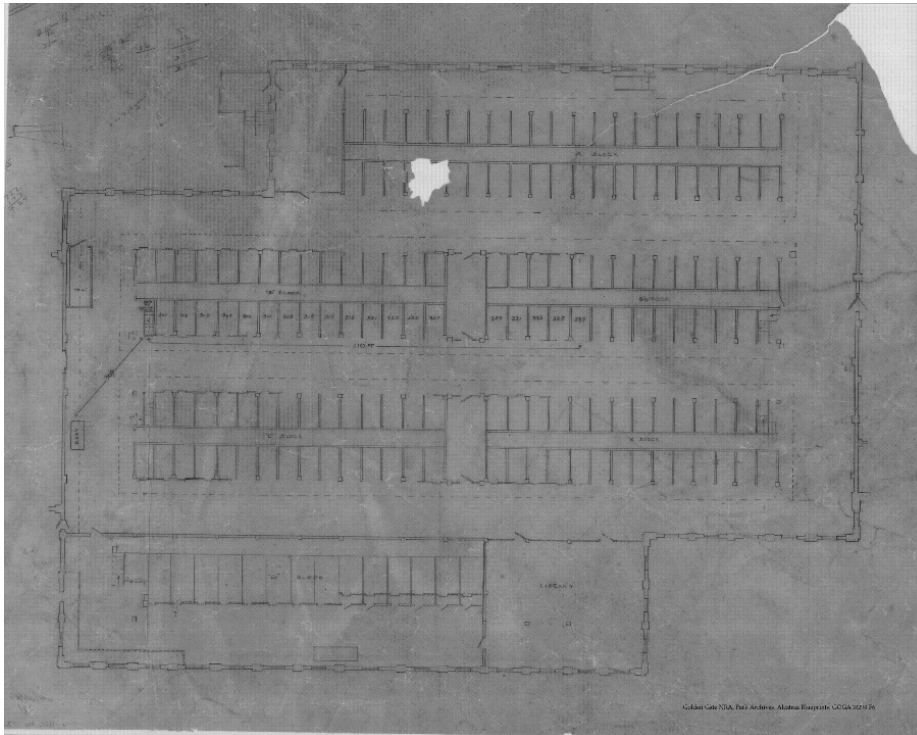
Timeline

- 1769 - Spanish sighting of what eventually became known as Alcatraz Island
- 1822 - Mexican independence and transfer of Spanish territory
- 1847 - U.S. Army first surveys Alcatraz
- 1848 - End of Mexican-American War, U.S. designates Alcatraz as government property
- 1853 - Construction on support facilities and fortifications begins, lighthouse completed
- 1854 - First armaments on Alcatraz, lighthouse begins operation by Coast Guard
- 1856 - Citadel completed, first fog bell
- 1858 - Initial fortifications completed
- 1868 - Designated by army to confine military prisoners with long sentences
- 1870 - Convict laborers begin leveling portions of the peaks and cliffs
- 1906 - Construction of main prison begins
- 1907 - Ceases functioning as a fortress, designated as a military prison
- 1908 - Cellhouse construction begins
- 1909 - New lighthouse begins operation
- 1912 - Cellhouse completed
- 1933 - Federal Bureau of Prisons takes over Alcatraz
- 1934 - First federal convicts arrive
- 1939 - Civilian lightkeepers
- 1963 - Penitentiary closes, lighthouse automated
- 1969 - Indian occupation
- 1970 - Warden's house and other structures destroyed by fire
- 1971 - Occupiers leave/are removed from island
- 1971 - GGNRA created with Alcatraz within its boundaries
- 1973 - First opened to tourism

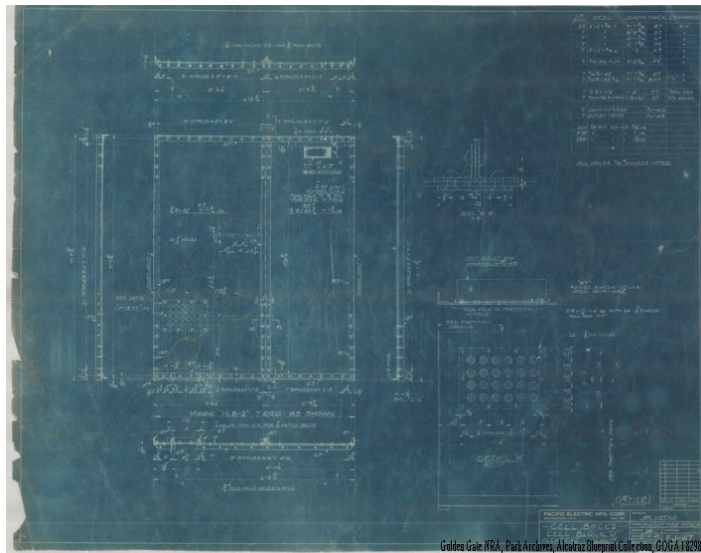
Collection and Series Description

Alcatraz blueprint collection, 1929-1959
GOGA 18928

Most of collection is comprised of architectural drawings (usually in blueprint form) of penitentiary-related structures on Alcatraz Island. They are plans for construction or modification of structures that may or may not have been carried out. Also included are utility use comparisons, patterns for chair slipcovers for the prison industries, and a rifle parts assemblage poster.



These and other documents were left in the powerhouse building on Alcatraz when the Federal Penitentiary closed in 1963. The building was not maintained and access to the island was not limited, so documents were exposed to the elements and were at risk of destruction and theft by individuals unaware of their historic value. These documents were salvaged by Park Technicians in the late 1970's.



One of the drawings was used as a sign during the Indian occupation period, 1969-1971. Notes on the verso of some of the drawings may also have been made by the people living on the island during that period, or they could be from the construction phase.

Arrangement: Numerical by drawing number; items with the same number have been called “copies.” A few of these “copies” are exact duplicates, but most of them are actually alternate versions of the same drawing.

Formats: Drawing, Architectural—blueprint, diazo, vellum
Pattern
Poster/Instructions

Folder List

Container	Folder #	Folder Title
Map folder	01	Building 39a-b, Building 64 Administration Building
Map folder	02	Building 68
Map folder	03	Building 68, Cellhouse
Map folder	04	Cellhouse – Basement, Cell Blocks, Cell Bars
Map folder	05	Cellhouse – Cells
Map folder	06	Cellhouse – D Block
Map folder	07	Cellhouse – D Block
Map folder	08	Cellhouse – D Block
Map folder	09	Cellhouse – D Block
Map folder	10	Cellhouse – D Block
Map folder	11	Cellhouse – Details
Map folder	12	Cellhouse – Guard Gallery, Hospital
Map folder	13	Cellhouse
Map folder	14	Cellhouse
Map folder	15	Cellhouse
Map folder	16	"No. 188-197, Water diagrams, Pump House..."
Map folder	17	"No. 198-206, Power House, oil storage, utility..."
Map folder	18	"No. 207-216, Cellhouse"
Map folder	19	"No. 217-225, Cellhouse"
Map folder	20	"No. 226-238, Cellhouse, tower, retaining wall"
Map folder	21	"No. 239-246, Towers, Bldg. 68, roadway"
Map folder	22	"No. 247-259, Roadway, oil, water, Indust. Bldg..."
Map folder	23	"No. 260-272, Housing group, tank, Bldg. 39A-B..."
Map folder	24	"No. 273-286, Cellhouse, housing group"
Map folder	25	"No. 287-297, Dormitory, Cellhouse, chair..."
Map folder	26	"No. 298-306, Cellhouse, dormitory, alterations key..."
Mega Map folder	1	"No. 31-39, 274, 277, Cellhouse, "
Mega Map folder	2	"No. 82-87, 100-101, 278, Cellhouse hospital"
Mega Map folder	3	"No. 170-181, 251-252, Indust. Bldg. "
Mega Map folder	4	"No. 151, Dock, piping details; No. 154, Dock, Tower details; No. 160, 168, 169, 250, Dock & Indust. Bldg.; No. 273-275, Indust. Bldg. & Cellhouse
Roll	R01	No. 276, Chair # 12 slip cover patterns"

Appendices

1. Item List by Drawing Number

Formats: BP = blueprint
 TR = tracing
 VM = vellum

Drwg.	Fldr.	Item Desc.	Serial #	Date	Copies	Frmt.
001A	03	Cellhouse 1st Floor Plan	8200/1		2	BP
001B	03	Cellhouse 1st Floor Plan	8200/1		2	BP
002	13	Cellhouse, Locking Device	8200/2		1	BP
003	13	Cellhouse, Locking Device	8200/3		2	BP
004	01	Cellhouse, Window Guards	8200/5		1	BP
005	04	Cellhouse, Basement	8200/13		2	BP
006	15	Cellhouse, Roof Screens			1	BP
007	05	Cellhouse, Cell Doors	8200/31		1	BP
008	13	Cellhouse, Main Cell Room Stair Doors	8200/38	3/19/34	2	BP
009	05	Cellhouse, Control Cabinet Lock	8200/42		2	BP
010	13	Cellhouse, Library Doors	8200/44	3/19/34	1	BP
011	03	Cellhouse, Attic Grills	8200/45		2	BP
012	14	Cellhouse, Pull Bar Gears	8200/47		1	BP
013	12	Cellhouse, Guard Hall Gratings	8200/48	3/19/34	2	BP
014	04	Cellhouse, Cell Block Plans	8200/?		1	BP
015	03	Cellhouse			1	VM
016	04	Cellhouse, Basement Shower Room	27 CR9-2	11/22/55	2	BP
017	04	Cellhouse, Basement Shower Room	27 CR9-1	7/12/54	1	BP
018	05	Cellhouse, Control Room Floor Plan			1	BP
019	15	Cellhouse, Stairs	8200/4		1	BP
020	02	Bldg. 68, Clothing Room Door Frame	SE-R-741	3/7/39	1	BP
021A	03	Cellhouse, Window Guards	3614	4/14/38	2	BP
021B	03	Cellhouse, Window Guards	F3615	4/15/38	1	BP
021C	03	Cellhouse, Window Guards	F 3616	4/19/39	1	BP
021D	03	Cellhouse, Window Guards	F 3617	4/20/38	1	BP
022	03	[missing since original inventory]			0	
023	06	Cellhouse, D Block, Alterations to Gun Gallery	5945-D24	11/16/46	1	BP
024	04	[missing since original inventory]			0	
025	11	Cellhouse, Floor Plan, Gun Ports			1	VM
026	03	Cellhouse, Alterations, New Gun Gallery	5945-D25		1	DZ
027	15	Cellhouse, Setting Plans of Gun Guard Balcony	8200/49L		2	BP
028	12	Cellhouse, Gallery Fronts	8633FJA98	1/30/41	1	BP
029	12	Cellhouse, Guards Gallery, Ceiling Grating	8633FJA14	2/4/41	1	BP
030	12	Cellhouse, Guards Gallery Ceiling	8633FJA13	2/4/41	1	BP
031	Mega 1	Cellhouse, D Block, Modernization of, General Arrangement	SE-R-820	5/25/40	1	BP
032	Mega 1	Cellhouse, D Block, Plans, Elevations	SE-R-827	5/25/40	2	BP
033	Mega 1	Cellhouse, D Block, Modernization of, Basement Plan	SE-R-823	5/25/40	2	BP
034	Mega 1	Cellhouse, D Block, Demolition Concrete	SE-R-?	5/23/44	2	BP
035	Mega 1	Cellhouse, D Block, Electrical	SE-R-825		2	BP
036	Mega 1	Cellhouse, D Block, Modernization of, Cell Partitions	SE-R-828	5/25/40	2	BP
037	Mega 1	Cellhouse, D Block, Cell Door Locking Details	SE-R-831	5/25/40	2	BP
038	Mega 1	Cellhouse, D Block, Modernization of Stairways	SE-R-826	5/25/40	2	BP

GOGA 18298 Alcatraz Blueprint Collection, 1939-1959

Drwg.	Fldr.	Item Desc.	Serial #	Date	Copies	Frmt.
039	Mega 1	Cellhouse, D Block, Modernization, Misc. Details	SE-R-829	5/25/40	2	BP
040	09	Cellhouse, D Block, Shower Shield	FJ-A84	11/18/40	1	BP
041	09	Cellhouse, D Block, Shower Shield	FJ-A85	11/19/40	1	BP
042	09	Cellhouse, D Block, Shower Shield	FJ-A18	8/15/40	1	BP
043	09	Cellhouse, D Block, Shower Front Partition	FJ-A14	8/9/40	1	BP
044	09	Cellhouse, D Block, Shower Partition	FJ-A86	11/19/40	1	BP
045	09	Cellhouse, D Block, Shower Shields	FJ-A28	8/23/40	1	BP
046	09	Cellhouse, D Block, Shower Back	FJ-A90	11/22/40	1	BP
047	08	Cellhouse, D Block, Inlet Boxes	FJ-A10	8/6/40	1	BP
048	06	Cellhouse, D Block, 1st Tier	FJ-A39	9/5/40	1	BP
049	07	Cellhouse, D Block, Cover Box, 1st Tier	FJ-A49	9/13/40	1	BP
050	07	Cellhouse, D Block, Cover Boxes & Doors	FJ-A52	9/21/40	2	BP
051	07	Cellhouse, D Block, Cover Box, Cell 28	FJ-A77	10/28/40	2	BP
052	06	Cellhouse, D Block, Cabinet A	FJ-A55	10/7/40	1	BP
053	06	Cellhouse, D Block, Cabinet C	FJ-A115		1	BP
054	07	Cellhouse, D Block, Floor Plates	FJ-A5	8/5/40	1	BP
055	07	Cellhouse, D Block, Floor Plates	?-A4		1	BP
056	07	Cellhouse, D Block, Floor Plates, 3rd Tier	FJ-A76	10/25/40	1	BP
057	07	Cellhouse, D Block, Floor Plates, 3rd Tier	FJ-A70	10/25/40	1	BP
058	06	Cellhouse, D Block, Ceiling Plates, 3rd Tier [Fragment]	FJ-A91	11/26/40	1	BP
059	06	Cellhouse, D Block, Ceiling Plates, Utility Corridor	FJ-A102	1/22/41	1	BP
060	06	Cellhouse, D Block, Ceiling Plates, Utility Corridor	FJ A103	1/23/40	1	BP
061	06	Cellhouse, D Block, Ceiling Plates, Utility Corridor	FJ A104	1/21/41	1	BP
062	12	Cellhouse, Guards Gallery, Ceiling Grating	FJ-A112	2/4/41	1	BP
063	09	Cellhouse, D Block, Skylight Guards	FJ-A100	1/28/41	1	BP
064	08	Cellhouse, D Block, Pilasters	FJ-A38	9/3/40	1	BP
065	08	Cellhouse, D Block, Pilasters	AJ-A7	9/18/40	1	BP
066	10	Cellhouse, D Block, Utility Corridor Front	FJ-A71	10/29/40	1	BP
067	10	Cellhouse, D Block, Utility Corridor Partition	FJ-A24	8/20/40	1	BP
068	10	Cellhouse, D Block, Thru Bar Details	AJ-A6	9/12/40	1	BP
069	08	Cellhouse, D Block, Mod. of, Structural Details	1	8/20/40	1	BP
070	10	Cellhouse, D Block, Stairs & Column Details	FJ-A74	10/25/40	1	BP
071	07	Cellhouse, D Block, Fire Hose Cabinets	FJ-A118	2/27/41	1	BP
072	10	Cellhouse, D Block, Trap Door Hinge Assembly	AJ-A12	12/5/40	1	BP
073A	13	Cellhouse, Misc. (Dental Chair Floor Plan, Etc.)	335-C	12/15/29	2	BP
073B	13	Cellhouse, Lighting Fixtures	FJ-A12	8/1/40	1	BP
074	08	Cellhouse, D Block, Rail Details [Fragment]	FJ-A72	10/25/40	1	BP
075	08	Cellhouse, D Block, Panel Locking Bars	AJ-A11	10/15/40	1	BP
076	08	Cellhouse, D Block, Latch Assembly	FJ-A42	9/4/40	1	BP
077	07	Cellhouse, D Block, Fan Space Partition	FJ-A110	1/31/41	1	BP
078	06	Cellhouse, D Block, Acoustical Treatment	41-3/1	1/11/41	1	BP
079	13	Cellhouse, Inlet Box, Sound Proof Cells	FJ-A9	8/7/40	1	BP
080	10	Cellhouse, D Block, Sound Proof Cell Partition	FJ-A31	8/27/40	1	BP
081	10	Cellhouse, D Block, Vent Box, Sound Proof Cell	FJ-A11	8/7/40	1	BP
082	Mega 2	Cellhouse, Mod. of Hospital, Demolition Plan	SE-R-801	5/25/40	2	BP
083	Mega 2	Cellhouse, Mod. of Hospital, Existing 2nd Floor Framing Plan	SE-R-802	5/25/40	2	BP
084	Mega 2	Cellhouse, Reconstruction of Hospital, Floor Plan		3/12/40	2	BP
085	Mega 2	Cellhouse, Mod. of Hospital Rooms 1-10 Including Details	SE-R-803	5/25/40	2	BP
086	Mega 2	Cellhouse, Mod. of Hospital, Heating & Ventilating	SE-R-807	5/25/40	2	BP

Drwg.	Fldr.	Item Desc.	Serial #	Date	Copies	Frmt.
087	Mega 2	Cellhouse, Mod. of Hospital, Electrical	SE-R-808	5/25/40	2	BP
088	14	Cellhouse, Proposed Strip Cells			2	BP
089	12	Cellhouse, Hospital, Proposed Strip Cells			2	VM
090	15	Cellhouse, Revision to Proposed Changes In Hospital		6/18/38	1	BP
091	14	Cellhouse, Proposed Ward Rooms	38-2	4/15/38	1	BP
092	14	Cellhouse, Proposed Hospital Rooms	38-1	4/15/38	1	BP
093	14	Cellhouse, Restraint Rooms	5526	10/25/55	2	BP
094	14	Cellhouse, Restraint Rooms, Voided Section	5526	10/25/55	2	DZ
095	14	Cellhouse, Restraint Rooms, Backwards Copy	5526	10/25/55	1	DZ
096	14	Cellhouse, Restraint Rooms, Mech. & Elec.	5526/HPE/4 50	10/25/55	2	BP
097A	14	Cellhouse, Restraint Rooms, Mech. & Elec.	5526/HPE/4 50	10/25/55	1	DZ
098	03	Cellhouse, Alterations to Hospital	E-450	11/21/51	2	DZ
099	03	Bldg. 68, Wire Cloth		4/10/46	1	VM
100	Mega 2	Cellhouse, Mod. of Hospital, Cell Locking Device	SE-R-804	5/25/40	2	BP
101	Mega 2	Cellhouse, Mod. of Hospital, Misc. Details	SE-R-805	5/25/40	2	BP
102	12	Cellhouse, Hospital, Ward, Office, Toilet	8200/8		1	BP
103	12	Cellhouse, Hospital, Ward, Kitchen Stores	8200/12		2	BP
104	12	Cellhouse, Hospital, Stairs	8200/34	3/19/34	2	BP
105	12	Cellhouse, Hospital, Halls, Basement Shower Room	8200/35		2	BP
106	21	Housing Group, Approach Plan	1	5/23/39	2	BP
107	22	Housing Group, Electrical Service	ME-2	5/19/39	2	BP
108	23	Housing Group, Mechanical Services	M.E.1	5/18/39	2	BP
109	23	Housing Group, Typical Details, Bldgs A-D	0-400	5/20/39	2	BP
110	23	Housing Group, Revised Window Details	201	12/29/39	1	BP
111	23	Housing Group, Floor Layout, A-B-C	1	2/9/40	2	BP
112	23	Housing Group, General Plan, Schedules, Etc.	200	5/23/39	2	BP
113	19	Dormitory A, Alteration to Type 1	A-1	6/5/43	2	DZ
114	22	Housing Group, Elevations & Sections	1-100	5/23/39	2	BP
115	20	Dormitory, Staff Officers, Foundation Plan	1-400	5/20/39	2	BP
116	20	Dormitory, Staff Officers, 2nd Floor Framing	1-401		1	BP
117	20	Dormitory, Staff Officers	1-402	5/20/39	2	BP
118	19	Dormitory A, Alterations to	A-450	6/5/43	2	DZ
119	21	Housing Group, Alternate #2, Extension to Bldg	1-403	5/20/39	1	BP
120	19	Dormitory A, Staff Officers, Alternate 2, Extension to A.	1-201	5/23/39	1	BP
121	19	Dormitory A, Staff Officers, Type 1, Plumbing	1P-450	5/20/39	2	BP
122	19	Dormitory A, Staff Officers, Heating & Ventilating	1HV451	5/20/39	2	BP
123	22	Housing Group, Conduit & Lighting	1-CL-452	5/19/39	2	BP
124	19	Dormitory A, Staff Officers, Type 1 Exterior	1-O200	5/23/39	2	BP
125	19	Dormitories, Plans & Interior Details	1-1	5/23/39	2	BP
126	19	Dormitories, Pantry Unit For Meeting Room	1-202	5/3/40	2	BP
127	19	Dormitories, Alterations to, Ranges, Fridges	A-200C	6/5/43	2	DZ
128	19	Dormitories, Alteration to, Cupboards, Etc.	A-200D	6/5/43	2	DZ
129	22	Housing Group, Elevations & Sections	2-100	5/23/39	2	BP
130A	21	Housing Group, Apt. House B, Type 2	2-400	5/20/39	2	BP
130B	21	Housing Group, Apt. House B, Type 2	2-1	5/23/39	2	BP
131	21	Housing Group, Apt. House B, Type 2	2-401	5/20/39	1	BP
132	21	Housing Group, Apt. House B&D, Plumbing	2-P-450	5/22/39	2	BP
133	21	Housing Group, Apt. House B&D, Heating & Ventilating	2-HV-451	6/5/39	2	BP

Drwg.	Fldr.	Item Desc.	Serial #	Date	Copies	Frmt.
134	22	Housing Group, Apt. House, Exterior Details	2-200	5/23/39	2	BP
135	21	Housing Group, Apt. House B, Interior Details	2-201	5/23/39	2	BP
136	21	Housing Group, Apt. House B, Glass Enclosure, For 1st Floor	1	6/7/41	2	DZ
137	22	Housing Group, Apt. House C	3-1	5/23/39	2	BP
138	22	Housing Group, Apt. House C	3-400	5/20/39	2	BP
139	22	Housing Group, Apt. House C, Alternate #3	3-402	6/29/39	1	BP
140	22	Housing Group, Apt. House C, Conduit & Lights [2 copies; 1 is a fragment w/notation from occupation on verso]	3-CL-452	5/23/39	2	BP
141	21	Housing Group, Apt. House 3, Heating & Ventilation	3-HV-451	5/20/39	2	BP
142	21	Housing Group, Apt. House 3	3-D-450	6/2/39	2	BP
143	22	Housing Group, Apt. House C	3-401	5/20/39	1	BP
144	22	Housing Group, Apt. House Exterior Details	3-200	5/23/39	1	BP
145	21	Housing Group, Apt. House B&C, Balcony Enclosures	1-A	11/14/41	1	DZ
146	17	Dock Revisions	SE-R-770		1	BP
147	17	Dock, Concrete Dock Details	SE-R-771	9/6/39	2	BP
148	18	Dock, Timber Dock Details	SE-R-772	9/6/39	2	BP
149	17	Dock, Connection Timber to Concrete Dock, Etc.	SE-R-773	9/6/39	2	BP
150	18	Dock, Reinforcing Details	SE-R-774	9/6/39	2	BP
151	Mega 4	Dock, Piping Details	SE-R-775	9/6/39	2	BP
152	17	Dock, Details Launch Landing	SE-R-776	9/6/39	2	BP
153	18	Dock, Sectional Elevations	SE-R-777	9/6/39	2	BP
154	Mega 4	Dock, Tower Details	SE-R-791	3/20/40	3	BP
155	18	Dock, Girders	152/20	1/25/40	1	BP
156	18	Dock, Girders	152/21	1/25/40	1	BP
157	17	Dock Slabs	152/22	1/26/40	1	BP
158	18	Dock, Girders, 7 Slabs, Layout Plan	152/PL-5	1/26/40	1	BP
159	18	Dock, Proposed Boat Slip For New Boat			2	DZ
160	Mega 4	Dock, Survey Plan	SE-R-X-1	9/6/39	1	BP
161	17	Dock Details		5/24/39	1	BP
162	17	Dock Details [2 Copies; 1 Is A Fragment]		5/24/39	2	BP
163	17	Dock, Concrete Dry		10/26/48	1	BP
164	17	Dock, Admittance Bldg.		1/23/42	2	BP
165	17	Dock, Admittance Bldg.	SE-R-795	6/13/41	2	BP
166	17	Dock, Admittance Bldg.	SE-R-796	6/13/41	2	BP
167	18	Dock, Plan of New Extension to Ramp At Landing	SE-R-797	6/13/41	2	BP
168	Mega 4	Indust. Bldg., Approach & Roof Plans	SE-R-740	3/20/39	2	BP
169	Mega 4	Indust. Bldg., 1st & 2nd Floor Plans	SE-R-741	3/20/39	2	BP
170	Mega 3	Indust. Bldg. Architectural Elevations	SE-R-744	3/20/39	2	BP
171	Mega 3	Indust. Bldg., Structural Foundation & First Floor Plans	SE-R-745		1	BP
172	Mega 3	Indust. Bldg., Structural, Found. & 1st Floor [2 copies; 1 is a fragment]	SE-R-746	3/20/39	2	BP
173	Mega 3	Indust. Bldg., Structural, 2nd Floor & Roof Framing	SE-R-747	3/20/39	1	BP
174	Mega 3	Indust. Bldg., Structural, 2nd Floor & Roof	SE-R-748		2	BP
175	Mega 3	Indust. Bldg., Architectural Cross Sections	SE-R-749		1	BP
176	Mega 3	Indust. Bldg., Architectural Laundry Details	SE-R-750		2	BP
177	Mega 3	Indust. Bldg., Structural, Reinf. Details	SE-R-751	3/20/39	2	BP
178	Mega 3	Indust. Bldg., Mechanical Machinery Layout	SE-R-753	3/20/39	2	BP
179	Mega 3	Indust. Bldg., Plumbing & Heating	SE-R-754	3/20/39	2	BP
180	Mega 3	Indust. Bldg., Electrical	SE-R-755	3/20/39	1	BP
181	Mega 3	Indust. Bldg., Plumbing Drainage	SE-R-756	3/20/39	1	BP

Drwg.	Fldr.	Item Desc.	Serial #	Date	Copies	Frmt.
182	23	Model Bldg., North Elevation			1	BP
183	23	Model Bldg., No. 82, Roof Plan			1	BP
184	23	Model Bldg., No. 82, 3rd Floor			1	BP
185	26	Tower, Proposed On Bldg. 82, W/Guard Walkways		9/12/35	1	BP
186	26	Tower, Proposed, Steel Guard Walkways, Supports	6323/E2	12/9/35	1	DZ
187	26	Tower, Proposed Guard Walkways & Supports	6323/E1	12/9/35	1	DZ
188	21	Flow Diagrams, Steam & Fresh Water	SE-R-709	7/5/38	2	BP
189	25	Pump House, General Elevations	SE-R-711	7/14/38	2	BP
190	25	Pump House, Plans	SE-R-712	7/14/38	2	BP
191	24	Power House, General View	SE-R-713	7/14/38	1	BP
192	24	Power House, Foundation Plan	SE-R-714	7/14/38	1	BP
193	24	Power House, Elevations	SE-R-715	7/14/38	2	BP
194	23	Oil Storage, Misc. Details	SE-R-716	7/14/38	1	BP
195	24	Power House, Breeching, Smokestack	SE-R-717	7/14/38	1	BP
196	24	Power House, Stack	SE-R-718	7/14/38	1	BP
197	24	Power House, Piping Details	SE-R-719	7/14/38	1	BP
198	24	Power House, Generator Panel	SE-R-720	7/14/38	2	BP
199	17	[plan removed, duplicate of drawing # 190, fldr. 3]			0	
200	23	Proposed Oil Storage Tank, Proposed Piping			1	BP
201	17	Comparison Charts, Fuel, Electrical, Water			2	BP
202	03	Cellhouse, Barred Windows	8200/7		2	BP
203	03	Cellhouse, Barred Windows	8200/9		2	BP
204	03	Cellhouse, Barred Windows	8200/10		2	BP
205	03	Cellhouse, Barred Windows	8200/11		2	BP
206	14	Cellhouse, Partitions	8200/20		2	BP
207	14	Cellhouse, Partitions	8200/21		1	BP
208	05	Cellhouse, Cell Doors	8200/26		2	BP
209	05	Cellhouse, Cell Doors	8200/28		2	BP
210	05	Cellhouse, Cell Doors	8200/32		1	BP
211	11	Cellhouse, Door	8200/33		2	BP
212	03	Cellhouse, Barred Doors	8200/40	3/19/34	2	BP
213	11	Cellhouse, Detail	8200/49D		1	BP
214	11	Cellhouse, Detail	8200/49H		1	BP
215	13	Cellhouse, Locking Device For Cell Doors [2 copies; 1 has notation on verso]	8200/52		2	BP
216	03	Cellhouse, Barred Windows	8200/6		2	BP
217	05	Cellhouse, Cell Front Bars	8200/14		1	BP
218	05	Cellhouse, Cell Front Bars	8200/15		1	BP
219	05	Cellhouse, Cell Front Bars	8200/18		2	BP
220	05	Cellhouse, Cell Door	8200/19		1	BP
221	11	Cellhouse, Detail, Screens	8200/24		1	BP
222A	05	Cellhouse, Cell Front Bars	8200/25		1	BP
222B	05	Cellhouse, Cell Front Bars	8200/26		1	BP
223A	04	Cellhouse, Cell Bars	8200/27		1	BP
223B	04	Cellhouse, Cell Bars	8200/28		1	BP
224	04	Cellhouse, Cell Bars	8200/29		2	BP
225	04	Cellhouse, Cell Bars	8200/30		2	BP
226	15	Cellhouse, Uni Lock On Double Plate Doors	8200/36		1	BP
227	15	Cellhouse, Various, Visitors Speaking Panel, Morgue Skylight [2 copies; 1 has notations on verso]	8200/39		2	BP

Drwg.	Fldr.	Item Desc.	Serial #	Date	Copies	Frmt.
228	11	Cellhouse, Full Size Chart of Control Cabinet	8200/41		1	BP
229	04	Cellhouse, Bars	8200/49A		1	BP
230	04	Cellhouse, Bars	8200/49C		1	BP
231	11	Cellhouse, Details, Bars	8200/49F		1	BP
232	11	Cellhouse, Details, Bars	8200/49G		1	BP
233	11	Cellhouse, Details	8200/49i		1	BP
234	15	Cellhouse, Stairs, A-C	8200/49J		1	BP
235	04	Cellhouse, Bars	8200/51	3/20/34	1	BP
236	20	Cellhouse, Detail, Bar, Frame	8200/53		1	BP
237	25	Retaining Wall, Concrete	SE-R-778	9/19/39	2	BP
238	26	Tower, Structural Steel Details	6323/D1	12/10/35	1	DZ
239	26	Tower, Steel Walkways & Supports			1	DZ
240	26	Tower D, Steel Walkways, Supports, Bents	6323/D2	12/12/35	1	DZ
241A	02	Bldg. 68, Basement Hallway Grating	FJ-A3A	3/16/39	2	BP
241B	02	Bldg. 68, Clothing Room Doors	FJ-A3	3/8/39	1	BP
241C	02	Bldg. 68, Basement Hallway Grating	FJ-A5	3/20/39	1	BP
242	02	Bldg. 68, Basement Hallway Grating	FJ-A4	3/17/39	2	BP
243	02	Bldg. 68, Basement Hallway Doors	FJ-A6	3/20/39	2	BP
244	25	Roadway, Details of Trench	SE-R-702	7/5/38	2	BP
245	25	Roadway, Details of Trench	SE-R-703	7/5/38	2	BP
246	20	Roadway, Electrical Transmission, Sanitary Sewer	SE-R-708	7/5/38	1	BP
247	25	Roadway, Details of Hydrants	SE-R-710	7/5/38	2	BP
248	23	Oil Storage, Misc. Details	SE-R-716	7/14/38	1	BP
249	21	Fresh Water Flow Diagram [Fragment]			1	BP
250	Mega 4	Indust. Bldg., Pile Foundations	SE-R-745	12/18/39	1	BP
251	Mega 3	Indust. Bldg., Cross Sections	SE-R-749	3/20/39	1	BP
252	Mega 3	Indust. Bldg. Arch. & Structural Cross Sect.	SE-R-752	3/20/39	1	BP
253	23	Housing Group, Lighting Fixtures, Misc.	326-H	2/28/36	2	BP
254	25	Removal of Concrete Columns C/2 to C/8 Incl.	SE-R-832	6/7/40	2	BP
255	23	Housing Group, Misc. Standard Details	374-R	11/22/33	2	BP
256	12	Cellhouse, Hospital, Glass Block Panel			1	TR
257	02	Bldg. 68, Proposed Tower And Walkway		8/31/37	1	DZ
258	02	Bldg. 68, Guard House	9265 E.1	9/21/37	1	DZ
259	02	Bldg. 68, Guard House Platform	9265 E2	10/4/37	1	DZ
260	23	Housing Group, Misc. Standard Details	M 373 N	9/6/32	2	BP
261	23	Housing Group, Misc. Drawings, Various Details	S-390E	5/26/37	1	BP
262	26	Tank, Stress Diagram For 250,000 Gal. Elevated	3-1419	6/28/39	1	BP
263	01	Bldg. 39a-B		1/31/39	1	DZ
264	01	5" Standard Ball Bearing Hinges For Constr.	A-5396-J	5/6/38	1	BP
265	01	Bldg. 64, Heating Plan		10/20/38	1	DZ
266	15	Cellhouse, Steel Sash Window Details			1	BP
267	23	Housing Group?, Plumbing Details, Misc. Drawing #305-J		3/21/34	1	BP
268	17	Detail of Gun Ports And Vision Panels	5945 D2	1/9/47	1	DZ
269	25	Railings & Canopy	6323/M1		1	DZ
270	03	Cellhouse, Assembly Drwg. For Window Guards	F3613-J7	4/12/38	1	BP
271	23	Cellhouse, Window Guards	AFA-1	2/28/39	2	BP
272	23	Cellhouse, Window Guards & Basement Door	F3411J13	4/27/38	1	BP
273	Mega 4	Indust. Bldg., Shops, 1st Floor	SE-R-700	8/24/38	2	BP
274	Mega 1	Cellhouse, D Block, Basement Plan	SE-R-823	5/25/40	1	BP

Drwg.	Fldr.	Item Desc.	Serial #	Date	Copies	Frmt.
274	06	Cellhouse, D Block, Basement Plan	SE-R-823	5/25/40	1	DZ
275	Mega 4	Indust. Bldg., Plumbing & Heating	3046-1	8/14/39	1	BP
276	Roll 1	Chair #12, Slip Cover Patterns		2/23/42	1	BP
277	Mega 1	Cellhouse, D Block, Door Operating Mechanism	SE-R-830	5/25/40	1	BP
278	Mega 2	Cellhouse, Hospital, General Arrangement			1	BP
278	12	Cellhouse, Hospital, General Arrangement			1	VM
279	05	Cellhouse, Changes & Additions In, Etc. [notations on verso]	1	6/10/46	2	DZ
280	05	Cellhouse, Changes & Additions to, Etc.	2	6/10/46	2	DZ
281	10	Cellhouse, D Block, Sound Proof Front & Door Grills	FJ-A37	8/29/40	1	BP
282	13	Cellhouse, Layout of New Enclosed Gun Gallery	5945/D3	8/23/46	1	DZ
283	12	Cellhouse, Hall Door, Control Arrangement & Assembly	FJ-A117	3/12/41	1	BP
284	23	Housing Group, Misc. Toilet Room, Parcel Post Chute	374-R	4/26/32	1	BP
285	22	Housing Group, Apt. House C, Exterior Details	3-200	5/23/39	2	BP
286	21	Housing Group, Apt. House B, New Mail Room	2-202	12/18/39	1	BP
287	20	Dormitory, Staff Officers, Plans & Interior	1-1A	12/18/39	1	BP
288	20	Dormitory, Staff Officers, Pantry Unit For Meeting Room	1-202	5/3/40	1	BP
289	04	Cellhouse, Cell Bars	8200/17		1	BP
290	07	Cellhouse, D Block, Cell Partition	FJ-A6	8/5/40	1	BP
291	06	Cellhouse, D Block, Cell Blocks	FJ-A7	8/14/40	1	BP
292	10	Cellhouse, D Block, Sound Proof Cell Backs	FJ-A13	8/9/40	1	BP
293	09	Cellhouse, D Block, Selective Door Locking Device	FJ-07	10/28/38	1	BP
294	25	Chair # 4, Slip Cover Pattern	4	2/2/42	1	BP
295	17	Dock, Detail of Piers At Enterence			1	BP
296	20	Dormitory, Staff Officers, 3 Levels			3	VM
297	18	Dock, Water & Oil Piping [Fragment]			1	BP
298	08	Cellhouse, D Block, Gaurds Gallery Extension	FJ-A1	7/16/40	1	BP
299	06	Cellhouse, D Block, 2nd & 3rd Tier Layout	FJ-A2	7/18/40	1	BP
300	08	Cellhouse, D Block, Layout of 3rd Tier Ceiling	FJ-A3	7/22/40	1	BP
301	19	Dormitory A, Type 1	A-2	6/5/43	1	DZ
302	01	AZ Alterations, Key Plan, Schedule of Works	5945/D23	11/14/46	1	DZ
303	01	Administration Bldg., Electrical & Plumbing Alterations [Fragment]		1/16/42	1	DZ
304	14	Cellhouse, Relocation of Officers Change Room		12/22/59	1	TR
305	01	[Armory In New Control Center] [originally identified as Target Practice Room]			1	TR
306	25	Rifle, U.S. Caliber 30, M1, Parts Assemblage Poster	FM23-5		3	//

2. Item List by Folder

Drwg.	Fldr.	Item Desc.	Serial #	Date	Copies	Frmt.
031	Mega 1	Cellhouse, D Block, Modernization of, General Arrangement	SE-R-820	5/25/40	1	BP
032	Mega 1	Cellhouse, D Block, Plans, Elevations	SE-R-827	5/25/40	2	BP
033	Mega 1	Cellhouse, D Block, Modernization of, Basement Plan	SE-R-823	5/25/40	2	BP
034	Mega 1	Cellhouse, D Block, Demolition Concrete	SE-R-?	5/23/44	2	BP
035	Mega 1	Cellhouse, D Block, Electrical	SE-R-825		2	BP
036	Mega 1	Cellhouse, D Block, Modernization of, Cell Partitions	SE-R-828	5/25/40	2	BP
037	Mega 1	Cellhouse, D Block, Cell Door Locking Details	SE-R-831	5/25/40	2	BP
038	Mega 1	Cellhouse, D Block, Modernization of Stairways	SE-R-826	5/25/40	2	BP
039	Mega 1	Cellhouse, D Block, Modernization, Misc. Details	SE-R-829	5/25/40	2	BP
082	Mega 2	Cellhouse, Mod. of Hospital, Demolition Plan	SE-R-801	5/25/40	2	BP
083	Mega 2	Cellhouse, Mod. of Hospital, Existing 2nd Floor Framing Plan	SE-R-802	5/25/40	2	BP
084	Mega 2	Cellhouse, Reconstruction of Hospital, Floor Plan		3/12/40	2	BP
085	Mega 2	Cellhouse, Mod. of Hospital Rooms 1-10 Including Details	SE-R-803	5/25/40	2	BP
086	Mega 2	Cellhouse, Mod. of Hospital, Heating & Ventilating	SE-R-807	5/25/40	2	BP
087	Mega 2	Cellhouse, Mod. of Hospital, Electrical	SE-R-808	5/25/40	2	BP
100	Mega 2	Cellhouse, Mod. of Hospital, Cell Locking Device	SE-R-804	5/25/40	2	BP
101	Mega 2	Cellhouse, Mod. of Hospital, Misc. Details	SE-R-805	5/25/40	2	BP
151	Mega 4	Dock, Piping Details	SE-R-775	9/6/39	2	BP
154	Mega 4	Dock, Tower Details	SE-R-791	3/20/40	3	BP
160	Mega 4	Dock, Survey Plan	SE-R-X-1	9/6/39	1	BP
168	Mega 4	Indust. Bldg., Approach & Roof Plans	SE-R-740	3/20/39	2	BP
169	Mega 4	Indust. Bldg., 1st & 2nd Floor Plans	SE-R-741	3/20/39	2	BP
170	Mega 3	Indust. Bldg. Architectural Elevations	SE-R-744	3/20/39	2	BP
171	Mega 3	Indust. Bldg., Structural Foundation & First Floor Plans	SE-R-745		1	BP
172	Mega 3	Indust. Bldg., Structural, Found. & 1st Floor [2 copies; 1 is a fragment]	SE-R-746	3/20/39	2	BP
173	Mega 3	Indust. Bldg., Structural, 2nd Floor & Roof Framing	SE-R-747	3/20/39	1	BP
174	Mega 3	Indust. Bldg., Structural, 2nd Floor & Roof	SE-R-748		2	BP
175	Mega 3	Indust. Bldg., Architectural Cross Sections	SE-R-749		1	BP
176	Mega 3	Indust. Bldg., Architectural Laundry Details	SE-R-750		2	BP
177	Mega 3	Indust. Bldg., Structural, Reinf. Details	SE-R-751	3/20/39	2	BP
178	Mega 3	Indust. Bldg., Mechanical Machinery Layout	SE-R-753	3/20/39	2	BP
179	Mega 3	Indust. Bldg., Plumbing & Heating	SE-R-754	3/20/39	2	BP
180	Mega 3	Indust. Bldg., Electrical	SE-R-755	3/20/39	1	BP
181	Mega 3	Indust. Bldg., Plumbing Drainage	SE-R-756	3/20/39	1	BP
250	Mega 4	Indust. Bldg., Pile Foundations	SE-R-745	12/18/39	1	BP
251	Mega 3	Indust. Bldg., Cross Sections	SE-R-749	3/20/39	1	BP
252	Mega 3	Indust. Bldg. Arch. & Structural Cross Sect.	SE-R-752	3/20/39	1	BP
273	Mega 4	Indust. Bldg., Shops, 1st Floor	SE-R-700	8/24/38	2	BP
274	Mega 1	Cellhouse, D Block, Basement Plan	SE-R-823	5/25/40	1	BP
275	Mega 4	Indust. Bldg., Plumbing & Heating	3046-1	8/14/39	1	BP
276	Roll 1	Chair #12, Slip Cover Patterns		2/23/42	1	BP
277	Mega 1	Cellhouse, D Block, Door Operating Mechanism	SE-R-830	5/25/40	1	BP
278	Mega 2	Cellhouse, Hospital, General Arrangement			1	BP
004	01	Cellhouse, Window Guards	8200/5		1	BP
263	01	Bldg. 39a-B		1/31/39	1	DZ
264	01	5" Standard Ball Bearing Hinges For Constr.	A-5396-J	5/6/38	1	BP
265	01	Bldg. 64, Heating Plan		10/20/38	1	DZ
302	01	AZ Alterations, Key Plan, Schedule of Works	5945/D23	11/14/46	1	DZ

GOGA 18298 Alcatraz Blueprint Collection, 1939-1959

Drwg.	Fldr.	Item Desc.	Serial #	Date	Copies	Frmt.
303	01	Administration Bldg., Electrical & Plumbing Alterations [Fragment]		1/16/42	1	DZ
305	01	[Armory In New Control Center] [originally identified as Target Practice Room]			1	TR
020	02	Bldg. 68, Clothing Room Door Frame	SE-R-741	3/7/39	1	BP
241A	02	Bldg. 68, Basement Hallway Grating	FJ-A3A	3/16/39	2	BP
241B	02	Bldg. 68, Clothing Room Doors	FJ-A3	3/8/39	1	BP
241C	02	Bldg. 68, Basement Hallway Grating	FJ-A5	3/20/39	1	BP
242	02	Bldg. 68, Basement Hallway Grating	FJ-A4	3/17/39	2	BP
243	02	Bldg. 68, Basement Hallway Doors	FJ-A6	3/20/39	2	BP
257	02	Bldg. 68, Proposed Tower And Walkway		8/31/37	1	DZ
258	02	Bldg. 68, Guard House	9265 E.1	9/21/37	1	DZ
259	02	Bldg. 68, Guard House Platform	9265 E2	10/4/37	1	DZ
001A	03	Cellhouse 1st Floor Plan	8200/1		2	BP
001B	03	Cellhouse 1st Floor Plan	8200/1		2	BP
011	03	Cellhouse, Attic Grills	8200/45		2	BP
015	03	Cellhouse			1	VM
021A	03	Cellhouse, Window Guards	3614	4/14/38	2	BP
021B	03	Cellhouse, Window Guards	F3615	4/15/38	1	BP
021C	03	Cellhouse, Window Guards	F 3616	4/19/39	1	BP
021D	03	Cellhouse, Window Guards	F 3617	4/20/38	1	BP
022	03	[missing since original inventory]			0	
026	03	Cellhouse, Alterations, New Gun Gallery	5945-D25		1	DZ
098	03	Cellhouse, Alterations to Hospital	E-450	11/21/51	2	DZ
099	03	Bldg. 68, Wire Cloth		4/10/46	1	VM
202	03	Cellhouse, Barred Windows	8200/7		2	BP
203	03	Cellhouse, Barred Windows	8200/9		2	BP
204	03	Cellhouse, Barred Windows	8200/10		2	BP
205	03	Cellhouse, Barred Windows	8200/11		2	BP
212	03	Cellhouse, Barred Doors	8200/40	3/19/34	2	BP
216	03	Cellhouse, Barred Windows	8200/6		2	BP
270	03	Cellhouse, Assembly Drwg. For Window Guards	F3613-J7	4/12/38	1	BP
005	04	Cellhouse, Basement	8200/13		2	BP
014	04	Cellhouse, Cell Block Plans	8200/?		1	BP
016	04	Cellhouse, Basement Shower Room	27 CR9-2	11/22/55	2	BP
017	04	Cellhouse, Basement Shower Room	27 CR9-1	7/12/54	1	BP
024	04	[missing since original inventory]			0	
223A	04	Cellhouse, Cell Bars	8200/27		1	BP
223B	04	Cellhouse, Cell Bars	8200/28		1	BP
224	04	Cellhouse, Cell Bars	8200/29		2	BP
225	04	Cellhouse, Cell Bars	8200/30		2	BP
229	04	Cellhouse, Bars	8200/49A		1	BP
230	04	Cellhouse, Bars	8200/49C		1	BP
235	04	Cellhouse, Bars	8200/51	3/20/34	1	BP
289	04	Cellhouse, Cell Bars	8200/17		1	BP
007	05	Cellhouse, Cell Doors	8200/31		1	BP
009	05	Cellhouse, Control Cabinet Lock	8200/42		2	BP
018	05	Cellhouse, Control Room Floor Plan			1	BP
208	05	Cellhouse, Cell Doors	8200/26		2	BP
209	05	Cellhouse, Cell Doors	8200/28		2	BP

GOGA 18298 Alcatraz Blueprint Collection, 1939-1959

Drwg.	Fldr.	Item Desc.	Serial #	Date	Copies	Frmt.
210	05	Cellhouse, Cell Doors	8200/32		1	BP
217	05	Cellhouse, Cell Front Bars	8200/14		1	BP
218	05	Cellhouse, Cell Front Bars	8200/15		1	BP
219	05	Cellhouse, Cell Front Bars	8200/18		2	BP
220	05	Cellhouse, Cell Door	8200/19		1	BP
222A	05	Cellhouse, Cell Front Bars	8200/25		1	BP
222B	05	Cellhouse, Cell Front Bars	8200/26		1	BP
279	05	Cellhouse, Changes & Additions In, Etc. [notations on verso]	1	6/10/46	2	DZ
280	05	Cellhouse, Changes & Additions to, Etc.	2	6/10/46	2	DZ
023	06	Cellhouse, D Block, Alterations to Gun Gallery	5945-D24	11/16/46	1	BP
048	06	Cellhouse, D Block, 1st Tier	FJ-A39	9/5/40	1	BP
052	06	Cellhouse, D Block, Cabinet A	FJ-A55	10/7/40	1	BP
053	06	Cellhouse, D Block, Cabinet C	FJ-A115		1	BP
058	06	Cellhouse, D Block, Ceiling Plates, 3rd Tier [Fragment]	FJ-A91	11/26/40	1	BP
059	06	Cellhouse, D Block, Ceiling Plates, Utility Corridor	FJ-A102	1/22/41	1	BP
060	06	Cellhouse, D Block, Ceiling Plates, Utility Corridor	FJ A103	1/23/40	1	BP
061	06	Cellhouse, D Block, Ceiling Plates, Utility Corridor	FJ A104	1/21/41	1	BP
078	06	Cellhouse, D Block, Acoustical Treatment	41-3/1	1/11/41	1	BP
274	06	Cellhouse, D Block, Basement Plan	SE-R-823	5/25/40	1	DZ
291	06	Cellhouse, D Block, Cell Blocks	FJ-A7	8/14/40	1	BP
299	06	Cellhouse, D Block, 2nd & 3rd Tier Layout	FJ-A2	7/18/40	1	BP
049	07	Cellhouse, D Block, Cover Box, 1st Tier	FJ-A49	9/13/40	1	BP
050	07	Cellhouse, D Block, Cover Boxes & Doors	FJ-A52	9/21/40	2	BP
051	07	Cellhouse, D Block, Cover Box, Cell 28	FJ-A77	10/28/40	2	BP
054	07	Cellhouse, D Block, Floor Plates	FJ-A5	8/5/40	1	BP
055	07	Cellhouse, D Block, Floor Plates	?-A4		1	BP
056	07	Cellhouse, D Block, Floor Plates, 3rd Tier	FJ-A76	10/25/40	1	BP
057	07	Cellhouse, D Block, Floor Plates, 3rd Tier	FJ-A70	10/25/40	1	BP
071	07	Cellhouse, D Block, Fire Hose Cabinets	FJ-A118	2/27/41	1	BP
077	07	Cellhouse, D Block, Fan Space Partition	FJ-A110	1/31/41	1	BP
290	07	Cellhouse, D Block, Cell Partition	FJ-A6	8/5/40	1	BP
047	08	Cellhouse, D Block, Inlet Boxes	FJ-A10	8/6/40	1	BP
064	08	Cellhouse, D Block, Pilasters	FJ-A38	9/3/40	1	BP
065	08	Cellhouse, D Block, Pilasters	AJ-A7	9/18/40	1	BP
069	08	Cellhouse, D Block, Mod. of, Structural Details	1	8/20/40	1	BP
074	08	Cellhouse, D Block, Rail Details [Fragment]	FJ-A72	10/25/40	1	BP
075	08	Cellhouse, D Block, Panel Locking Bars	AJ-A11	10/15/40	1	BP
076	08	Cellhouse, D Block, Latch Assembly	FJ-A42	9/4/40	1	BP
298	08	Cellhouse, D Block, Gaurds Gallery Extension	FJ-A1	7/16/40	1	BP
300	08	Cellhouse, D Block, Layout of 3rd Tier Ceiling	FJ-A3	7/22/40	1	BP
040	09	Cellhouse, D Block, Shower Shield	FJ-A84	11/18/40	1	BP
041	09	Cellhouse, D Block, Shower Shield	FJ-A85	11/19/40	1	BP
042	09	Cellhouse, D Block, Shower Shield	FJ-A18	8/15/40	1	BP
043	09	Cellhouse, D Block, Shower Front Partition	FJ-A14	8/9/40	1	BP
044	09	Cellhouse, D Block, Shower Partition	FJ-A86	11/19/40	1	BP
045	09	Cellhouse, D Block, Shower Shields	FJ-A28	8/23/40	1	BP
046	09	Cellhouse, D Block, Shower Back	FJ-A90	11/22/40	1	BP
063	09	Cellhouse, D Block, Skylight Guards	FJ-A100	1/28/41	1	BP
293	09	Cellhouse, D Block, Selective Door Locking Device	FJ-07	10/28/38	1	BP

GOGA 18298 Alcatraz Blueprint Collection, 1939-1959

Drwg.	Fldr.	Item Desc.	Serial #	Date	Copies	Frmt.
066	10	Cellhouse, D Block, Utility Corridor Front	FJ-A71	10/29/40	1	BP
067	10	Cellhouse, D Block, Utility Corridor Partition	FJ-A24	8/20/40	1	BP
068	10	Cellhouse, D Block, Thru Bar Details	AJ-A6	9/12/40	1	BP
070	10	Cellhouse, D Block, Stairs & Column Details	FJ-A74	10/25/40	1	BP
072	10	Cellhouse, D Block, Trap Door Hinge Assembly	AJ-A12	12/5/40	1	BP
080	10	Cellhouse, D Block, Sound Proof Cell Partition	FJ-A31	8/27/40	1	BP
081	10	Cellhouse, D Block, Vent Box, Sound Proof Cell	FJ-A11	8/7/40	1	BP
281	10	Cellhouse, D Block, Sound Proof Front & Door Grills	FJ-A37	8/29/40	1	BP
292	10	Cellhouse, D Block, Sound Proof Cell Backs	FJ-A13	8/9/40	1	BP
025	11	Cellhouse, Floor Plan, Gun Ports			1	VM
211	11	Cellhouse, Door	8200/33		2	BP
213	11	Cellhouse, Detail	8200/49D		1	BP
214	11	Cellhouse, Detail	8200/49H		1	BP
221	11	Cellhouse, Detail, Screens	8200/24		1	BP
228	11	Cellhouse, Full Size Chart of Control Cabinet	8200/41		1	BP
231	11	Cellhouse, Details, Bars	8200/49F		1	BP
232	11	Cellhouse, Details, Bars	8200/49G		1	BP
233	11	Cellhouse, Details	8200/49i		1	BP
013	12	Cellhouse, Guard Hall Gratings	8200/48	3/19/34	2	BP
028	12	Cellhouse, Gallery Fronts	8633FJA98	1/30/41	1	BP
029	12	Cellhouse, Guards Gallery, Ceiling Grating	8633FJA14	2/4/41	1	BP
030	12	Cellhouse, Guards Gallery Ceiling	8633FJA13	2/4/41	1	BP
062	12	Cellhouse, Guards Gallery, Ceiling Grating	FJ-A112	2/4/41	1	BP
089	12	Cellhouse, Hospital, Proposed Strip Cells			2	VM
102	12	Cellhouse, Hospital, Ward, Office, Toilet	8200/8		1	BP
103	12	Cellhouse, Hospital, Ward, Kitchen Stores	8200/12		2	BP
104	12	Cellhouse, Hospital, Stairs	8200/34	3/19/34	2	BP
105	12	Cellhouse, Hospital, Halls, Basement Shower Room	8200/35		2	BP
256	12	Cellhouse, Hospital, Glass Block Panel			1	TR
278	12	Cellhouse, Hospital, General Arrangement			1	VM
283	12	Cellhouse, Hall Door, Control Arrangement & Assembly	FJ-A117	3/12/41	1	BP
002	13	Cellhouse, Locking Device	8200/2		1	BP
003	13	Cellhouse, Locking Device	8200/3		2	BP
008	13	Cellhouse, Main Cell Room Stair Doors	8200/38	3/19/34	2	BP
010	13	Cellhouse, Library Doors	8200/44	3/19/34	1	BP
073A	13	Cellhouse, Misc, (Dental Chair Floor Plan, Etc.)	335-C	12/15/29	2	BP
073B	13	Cellhouse, Lighting Fixtures	FJ-A12	8/1/40	1	BP
079	13	Cellhouse, Inlet Box, Sound Proof Cells	FJ-A9	8/7/40	1	BP
215	13	Cellhouse, Locking Device For Cell Doors [2 copies; 1 has notation on verso]	8200/52		2	BP
282	13	Cellhouse, Layout of New Enclosed Gun Gallery	5945/D3	8/23/46	1	DZ
012	14	Cellhouse, Pull Bar Gears	8200/47		1	BP
088	14	Cellhouse, Proposed Strip Cells			2	BP
091	14	Cellhouse, Proposed Ward Rooms	38-2	4/15/38	1	BP
092	14	Cellhouse, Proposed Hospital Rooms	38-1	4/15/38	1	BP
093	14	Cellhouse, Restraint Rooms	5526	10/25/55	2	BP
094	14	Cellhouse, Restraint Rooms, Voided Section	5526	10/25/55	2	DZ
095	14	Cellhouse, Restraint Rooms, Backwards Copy	5526	10/25/55	1	DZ
096	14	Cellhouse, Restraint Rooms, Mech. & Elec.	5526/HPE/4 50	10/25/55	2	BP

GOGA 18298 Alcatraz Blueprint Collection, 1939-1959

Drwg.	Fldr.	Item Desc.	Serial #	Date	Copies	Frmt.
097A	14	Cellhouse, Restraint Rooms, Mech. & Elec.	5526/HPE/4 50	10/25/55	1	DZ
206	14	Cellhouse, Partitions	8200/20		2	BP
207	14	Cellhouse, Partitions	8200/21		1	BP
304	14	Cellhouse, Relocation of Officers Change Room		12/22/59	1	TR
006	15	Cellhouse, Roof Screens			1	BP
019	15	Cellhouse, Stairs	8200/4		1	BP
027	15	Cellhouse, Setting Plans of Gun Guard Balcony	8200/49L		2	BP
090	15	Cellhouse, Revision to Proposed Changes In Hospital		6/18/38	1	BP
226	15	Cellhouse, Uni Lock On Double Plate Doors	8200/36		1	BP
227	15	Cellhouse, Various, Visitors Speaking Panel, Morgue Skylight [2 copies; 1 has notations on verso]	8200/39		2	BP
234	15	Cellhouse, Stairs, A-C	8200/49J		1	BP
266	15	Cellhouse, Steel Sash Window Details			1	BP
146	17	Dock Revisions	SE-R-770		1	BP
147	17	Dock, Concrete Dock Details	SE-R-771	9/6/39	2	BP
149	17	Dock, Connection Timber to Concrete Dock, Etc.	SE-R-773	9/6/39	2	BP
152	17	Dock, Details Launch Landing	SE-R-776	9/6/39	2	BP
157	17	Dock Slabs	152/22	1/26/40	1	BP
161	17	Dock Details		5/24/39	1	BP
162	17	Dock Details [2 Copies; 1 Is A Fragment]		5/24/39	2	BP
163	17	Dock, Concrete Dry		10/26/48	1	BP
164	17	Dock, Admittance Bldg.		1/23/42	2	BP
165	17	Dock, Admittance Bldg.	SE-R-795	6/13/41	2	BP
166	17	Dock, Admittance Bldg.	SE-R-796	6/13/41	2	BP
199	17	[plan removed, duplicate of drawing # 190, fldr. 3]			0	
201	17	Comparison Charts, Fuel, Electrical, Water			2	BP
268	17	Detail of Gun Ports And Vision Panels	5945 D2	1/9/47	1	DZ
295	17	Dock, Detail of Piers At Enterence			1	BP
148	18	Dock, Timber Dock Details	SE-R-772	9/6/39	2	BP
150	18	Dock, Reinforcing Details	SE-R-774	9/6/39	2	BP
153	18	Dock, Sectional Elevations	SE-R-777	9/6/39	2	BP
155	18	Dock, Girders	152/20	1/25/40	1	BP
156	18	Dock, Girders	152/21	1/25/40	1	BP
158	18	Dock, Girders, 7 Slabs, Layout Plan	152/PL-5	1/26/40	1	BP
159	18	Dock, Proposed Boat Slip For New Boat			2	DZ
167	18	Dock, Plan of New Extension to Ramp At Landing	SE-R-797	6/13/41	2	BP
297	18	Dock, Water & Oil Piping [Fragment]			1	BP
113	19	Dormitory A, Alteration to Type 1	A-1	6/5/43	2	DZ
118	19	Dormitory A, Alterations to	A-450	6/5/43	2	DZ
120	19	Dormitory A, Staff Officers, Alternate 2, Extension to A.	1-201	5/23/39	1	BP
121	19	Dormitory A, Staff Officers, Type 1, Plumbing	1P-450	5/20/39	2	BP
122	19	Dormitory A, Staff Officers, Heating & Ventilating	1HV451	5/20/39	2	BP
124	19	Dormitory A, Staff Officers, Type 1 Exterior	1-O200	5/23/39	2	BP
125	19	Dormitories, Plans & Interior Details	1-1	5/23/39	2	BP
126	19	Dormitories, Pantry Unit For Meeting Room	1-202	5/3/40	2	BP
127	19	Dormitories, Alterations to, Ranges, Fridges	A-200C	6/5/43	2	DZ
128	19	Dormitories, Alteration to, Cupboards, Etc.	A-200D	6/5/43	2	DZ
301	19	Dormitory A, Type 1	A-2	6/5/43	1	DZ
115	20	Dormitory, Staff Officers, Foundation Plan	1-400	5/20/39	2	BP

GOGA 18298 Alcatraz Blueprint Collection, 1939-1959

Drwg.	Fldr.	Item Desc.	Serial #	Date	Copies	Frmt.
116	20	Dormitory, Staff Officers, 2nd Floor Framing	1-401		1	BP
117	20	Dormitory, Staff Officers	1-402	5/20/39	2	BP
236	20	Cellhouse, Detail, Bar, Frame	8200/53		1	BP
246	20	Roadway, Electrical Transmission, Sanitary Sewer	SE-R-708	7/5/38	1	BP
287	20	Dormitory, Staff Officers, Plans & Interior	1-1A	12/18/39	1	BP
288	20	Dormitory, Staff Officers, Pantry Unit For Meeting Room	1-202	5/3/40	1	BP
296	20	Dormitory, Staff Officers, 3 Levels			3	VM
106	21	Housing Group, Approach Plan	1	5/23/39	2	BP
119	21	Housing Group, Alternate #2, Extension to Bldg	1-403	5/20/39	1	BP
130A	21	Housing Group, Apt. House B, Type 2	2-400	5/20/39	2	BP
130B	21	Housing Group, Apt. House B, Type 2	2-1	5/23/39	2	BP
131	21	Housing Group, Apt. House B, Type 2	2-401	5/20/39	1	BP
132	21	Housing Group, Apt. House B&D, Plumbing	2-P-450	5/22/39	2	BP
133	21	Housing Group, Apt. House B&D, Heating & Ventilating	2-HV-451	6/5/39	2	BP
135	21	Housing Group, Apt. House B, Interior Details	2-201	5/23/39	2	BP
136	21	Housing Group, Apt. House B, Glass Enclosure, For 1st Floor	1	6/7/41	2	DZ
141	21	Housing Group, Apt. House 3, Heating & Ventilation	3-HV-451	5/20/39	2	BP
142	21	Housing Group, Apt. House 3	3-D-450	6/2/39	2	BP
145	21	Housing Group, Apt. House B&C, Balcony Enclosures	1-A	11/14/41	1	DZ
188	21	Flow Diagrams, Steam & Fresh Water	SE-R-709	7/5/38	2	BP
249	21	Fresh Water Flow Diagram [Fragment]			1	BP
286	21	Housing Group, Apt. House B, New Mail Room	2-202	12/18/39	1	BP
107	22	Housing Group, Electrical Service	ME-2	5/19/39	2	BP
114	22	Housing Group, Elevations & Sections	1-100	5/23/39	2	BP
123	22	Housing Group, Conduit & Lighting	1-CL-452	5/19/39	2	BP
129	22	Housing Group, Elevations & Sections	2-100	5/23/39	2	BP
134	22	Housing Group, Apt. House, Exterior Details	2-200	5/23/39	2	BP
137	22	Housing Group, Apt. House C	3-1	5/23/39	2	BP
138	22	Housing Group, Apt. House C	3-400	5/20/39	2	BP
139	22	Housing Group, Apt. House C, Alternate #3	3-402	6/29/39	1	BP
140	22	Housing Group, Apt. House C, Conduit & Lights [2 copies; 1 is a fragment w/notation from occupation on verso]	3-CL-452	5/23/39	2	BP
143	22	Housing Group, Apt. House C	3-401	5/20/39	1	BP
144	22	Housing Group, Apt. House Exterior Details	3-200	5/23/39	1	BP
285	22	Housing Group, Apt. House C, Exterior Details	3-200	5/23/39	2	BP
108	23	Housing Group, Mechanical Services	M.E.1	5/18/39	2	BP
109	23	Housing Group, Typical Details, Bldgs A-D	0-400	5/20/39	2	BP
110	23	Housing Group, Revised Window Details	201	12/29/39	1	BP
111	23	Housing Group, Floor Layout, A-B-C	1	2/9/40	2	BP
112	23	Housing Group, General Plan, Schedules, Etc.	200	5/23/39	2	BP
182	23	Model Bldg., North Elevation			1	BP
183	23	Model Bldg., No. 82, Roof Plan			1	BP
184	23	Model Bldg., No. 82, 3rd Floor			1	BP
194	23	Oil Storage, Misc. Details	SE-R-716	7/14/38	1	BP
200	23	Proposed Oil Storage Tank, Proposed Piping			1	BP
248	23	Oil Storage, Misc. Details	SE-R-716	7/14/38	1	BP
253	23	Housing Group, Lighting Fixtures, Misc.	326-H	2/28/36	2	BP
255	23	Housing Group, Misc. Standard Details	374-R	11/22/33	2	BP
260	23	Housing Group, Misc. Standard Details	M 373 N	9/6/32	2	BP
261	23	Housing Group, Misc. Drawings, Various Details	S-390E	5/26/37	1	BP

GOGA 18298 Alcatraz Blueprint Collection, 1939-1959

Drwg.	Fldr.	Item Desc.	Serial #	Date	Copies	Frmt.
267	23	Housing Group?, Plumbing Details, Misc. Drawing #305-J		3/21/34	1	BP
271	23	Cellhouse, Window Guards	AFA-1	2/28/39	2	BP
272	23	Cellhouse, Window Guards & Basement Door	F3411J13	4/27/38	1	BP
284	23	Housing Group, Misc. Toilet Room, Parcel Post Chute	374-R	4/26/32	1	BP
191	24	Power House, General View	SE-R-713	7/14/38	1	BP
192	24	Power House, Foundation Plan	SE-R-714	7/14/38	1	BP
193	24	Power House, Elevations	SE-R-715	7/14/38	2	BP
195	24	Power House, Breeching, Smokestack	SE-R-717	7/14/38	1	BP
196	24	Power House, Stack	SE-R-718	7/14/38	1	BP
197	24	Power House, Piping Details	SE-R-719	7/14/38	1	BP
198	24	Power House, Generator Panel	SE-R-720	7/14/38	2	BP
189	25	Pump House, General Elevations	SE-R-711	7/14/38	2	BP
190	25	Pump House, Plans	SE-R-712	7/14/38	2	BP
237	25	Retaining Wall, Concrete	SE-R-778	9/19/39	2	BP
244	25	Roadway, Details of Trench	SE-R-702	7/5/38	2	BP
245	25	Roadway, Details of Trench	SE-R-703	7/5/38	2	BP
247	25	Roadway, Details of Hydrants	SE-R-710	7/5/38	2	BP
254	25	Removal of Concrete Columns C/2 to C/8 Incl.	SE-R-832	6/7/40	2	BP
269	25	Railings & Canopy	6323/M1		1	DZ
294	25	Chair # 4, Slip Cover Pattern	4	2/2/42	1	BP
306	25	Rifle, U.S. Caliber 30, M1, Parts Assemblage Poster	FM23-5		3	//
185	26	Tower, Proposed On Bldg. 82, W/Guard Walkways		9/12/35	1	BP
186	26	Tower, Proposed, Steel Guard Walkways, Supports	6323/E2	12/9/35	1	DZ
187	26	Tower, Proposed Guard Walkways & Supports	6323/E1	12/9/35	1	DZ
238	26	Tower, Structural Steel Details	6323/D1	12/10/35	1	DZ
239	26	Tower, Steel Walkways & Supports			1	DZ
240	26	Tower D, Steel Walkways, Supports, Bents	6323/D2	12/12/35	1	DZ
262	26	Tank, Stress Diagram For 250,000 Gal. Elevated	3-1419	6/28/39	1	BP

3. Alphabetical Item List

Formats: BP = blueprint
 TR = tracing
 VM = vellum

Item Desc.	Drwg. #	Fldr. #	Copies	Frmt.
[missing since original inventory]	022		0	
[missing since original inventory]	024		0	
5" Standard Ball Bearing Hinges For Constr.	264	01	1	BP
Administration Bldg., Electrical & Plumbing Alterations [Fragment]	303	01	1	DZ
[Armory In New Control Center] [originally identified as Target Practice Room]	305	01	1	TR
AZ Alterations, Key Plan, Schedule of Works	302	01	1	DZ
Bldg. 39a-B	263	01	1	DZ
Bldg. 64, Heating Plan	265	01	1	DZ
Bldg. 68, Basement Hallway Doors	243	02	2	BP
Bldg. 68, Basement Hallway Grating	241A	02	2	BP
Bldg. 68, Basement Hallway Grating	241C	02	1	BP
Bldg. 68, Basement Hallway Grating	242	02	2	BP
Bldg. 68, Clothing Room Door Frame	020	02	1	BP
Bldg. 68, Clothing Room Doors	241B	02	1	BP
Bldg. 68, Guard House	258	02	1	DZ
Bldg. 68, Guard House Platform	259	02	1	DZ
Bldg. 68, Proposed Tower And Walkway	257	02	1	DZ
Bldg. 68, Wire Cloth	099	03	1	VM
Cellhouse	015	03	1	VM
Cellhouse, 1st Floor Plan	001A	03	2	BP
Cellhouse, 1st Floor Plan	001B	03	2	BP
Cellhouse, Alterations to Hospital	098	03	2	DZ
Cellhouse, Alterations, New Gun Gallery	026	03	1	DZ
Cellhouse, Assembly Drwg. For Window Guards	270	03	1	BP
Cellhouse, Attic Grills	011	03	2	BP
Cellhouse, Barred Doors	212	03	2	BP
Cellhouse, Barred Windows	202	03	2	BP
Cellhouse, Barred Windows	203	03	2	BP
Cellhouse, Barred Windows	204	03	2	BP
Cellhouse, Barred Windows	205	03	2	BP
Cellhouse, Barred Windows	216	03	2	BP
Cellhouse, Bars	229	04	1	BP
Cellhouse, Bars	230	04	1	BP
Cellhouse, Bars	235	04	1	BP
Cellhouse, Basement	005	04	2	BP
Cellhouse, Basement Shower Room	016	04	2	BP
Cellhouse, Basement Shower Room	017	04	1	BP
Cellhouse, Cell Bars	223A	04	1	BP
Cellhouse, Cell Bars	223B	04	1	BP
Cellhouse, Cell Bars	224	04	2	BP
Cellhouse, Cell Bars	225	04	2	BP
Cellhouse, Cell Bars	289	04	1	BP
Cellhouse, Cell Block Plans	014	04	1	BP

Item Desc.	Drwg. #	Fldr. #	Copies	Frmt.
Cellhouse, Cell Door	220	05	1	BP
Cellhouse, Cell Doors	007	05	1	BP
Cellhouse, Cell Doors	208	05	2	BP
Cellhouse, Cell Doors	209	05	2	BP
Cellhouse, Cell Doors	210	05	1	BP
Cellhouse, Cell Front Bars	217	05	1	BP
Cellhouse, Cell Front Bars	218	05	1	BP
Cellhouse, Cell Front Bars	219	05	2	BP
Cellhouse, Cell Front Bars	222A	05	1	BP
Cellhouse, Cell Front Bars	222B	05	1	BP
Cellhouse, Changes & Additions In, Etc. [notations on verso]	279	05	2	DZ
Cellhouse, Changes & Additions to, Etc.	280	05	2	DZ
Cellhouse, Control Cabinet Lock	009	05	2	BP
Cellhouse, Control Room Floor Plan	018	05	1	BP
Cellhouse, D Block, 1st Tier	048	06	1	BP
Cellhouse, D Block, 2nd & 3rd Tier Layout	299	06	1	BP
Cellhouse, D Block, Acoustical Treatment	078	06	1	BP
Cellhouse, D Block, Alterations to Gun Gallery	023	06	1	BP
Cellhouse, D Block, Basement Plan	274	06	1	DZ
Cellhouse, D Block, Basement Plan	274	Mega 1	1	BP
Cellhouse, D Block, Cabinet A	052	06	1	BP
Cellhouse, D Block, Cabinet C	053	06	1	BP
Cellhouse, D Block, Ceiling Plates, 3rd Tier [Fragment]	058	06	1	BP
Cellhouse, D Block, Ceiling Plates, Utility Corridor	059	06	1	BP
Cellhouse, D Block, Ceiling Plates, Utility Corridor	060	06	1	BP
Cellhouse, D Block, Ceiling Plates, Utility Corridor	061	06	1	BP
Cellhouse, D Block, Cell Blocks	291	06	1	BP
Cellhouse, D Block, Cell Door Locking Details	037	Mega 1	2	BP
Cellhouse, D Block, Cell Partition	290	07	1	BP
Cellhouse, D Block, Cover Box, 1st Tier	049	07	1	BP
Cellhouse, D Block, Cover Box, Cell 28	051	07	2	BP
Cellhouse, D Block, Cover Boxes & Doors	050	07	2	BP
Cellhouse, D Block, Demolition Concrete	034	Mega 1	2	BP
Cellhouse, D Block, Door Operating Mechanism	277	Mega 1	1	BP
Cellhouse, D Block, Electrical	035	Mega 1	2	BP
Cellhouse, D Block, Fan Space Partition	077	07	1	BP
Cellhouse, D Block, Fire Hose Cabinets	071	07	1	BP
Cellhouse, D Block, Floor Plates	054	07	1	BP
Cellhouse, D Block, Floor Plates	055	07	1	BP
Cellhouse, D Block, Floor Plates, 3rd Tier	056	07	1	BP
Cellhouse, D Block, Floor Plates, 3rd Tier	057	07	1	BP
Cellhouse, D Block, Guards Gallery Extension	298	08	1	BP
Cellhouse, D Block, Inlet Boxes	047	08	1	BP
Cellhouse, D Block, Latch Assembly	076	08	1	BP
Cellhouse, D Block, Layout of 3rd Tier Ceiling	300	08	1	BP
Cellhouse, D Block, Mod. of, Structural Details	069	08	1	BP
Cellhouse, D Block, Modernization of Stairways	038	Mega 1	2	BP
Cellhouse, D Block, Modernization of, Basement Plan	033	Mega 1	2	BP
Cellhouse, D Block, Modernization of, Cell Partitions	036	Mega 1	2	BP

Item Desc.	Drwg. #	Fldr. #	Copies	Frmt.
Cellhouse, D Block, Modernization of, General Arrangement	031	Mega 1	1	BP
Cellhouse, D Block, Modernization, Misc. Details	039	Mega 1	2	BP
Cellhouse, D Block, Panel Locking Bars	075	08	1	BP
Cellhouse, D Block, Pilasters	064	08	1	BP
Cellhouse, D Block, Pilasters	065	08	1	BP
Cellhouse, D Block, Plans, Elevations	032	Mega 1	2	BP
Cellhouse, D Block, Rail Details [Fragment]	074	08	1	BP
Cellhouse, D Block, Selective Door Locking Device	293	09	1	BP
Cellhouse, D Block, Shower Back	046	09	1	BP
Cellhouse, D Block, Shower Front Partition	043	09	1	BP
Cellhouse, D Block, Shower Partition	044	09	1	BP
Cellhouse, D Block, Shower Shield	040	09	1	BP
Cellhouse, D Block, Shower Shield	041	09	1	BP
Cellhouse, D Block, Shower Shield	042	09	1	BP
Cellhouse, D Block, Shower Shields	045	09	1	BP
Cellhouse, D Block, Skylight Guards	063	09	1	BP
Cellhouse, D Block, Sound Proof Cell Backs	292	10	1	BP
Cellhouse, D Block, Sound Proof Cell Partition	080	10	1	BP
Cellhouse, D Block, Sound Proof Front & Door Grills	281	10	1	BP
Cellhouse, D Block, Stairs & Column Details	070	10	1	BP
Cellhouse, D Block, Thru Bar Details	068	10	1	BP
Cellhouse, D Block, Trap Door Hinge Assembly	072	10	1	BP
Cellhouse, D Block, Utility Corridor Front	066	10	1	BP
Cellhouse, D Block, Utility Corridor Partition	067	10	1	BP
Cellhouse, D Block, Vent Box, Sound Proof Cell	081	10	1	BP
Cellhouse, Detail	213	11	1	BP
Cellhouse, Detail	214	11	1	BP
Cellhouse, Detail, Bar, Frame	236	20	1	BP
Cellhouse, Detail, Screens	221	11	1	BP
Cellhouse, Details	233	11	1	BP
Cellhouse, Details, Bars	231	11	1	BP
Cellhouse, Details, Bars	232	11	1	BP
Cellhouse, Door	211	11	2	BP
Cellhouse, Floor Plan, Gun Ports	025	11	1	VM
Cellhouse, Full Size Chart of Control Cabinet	228	11	1	BP
Cellhouse, Gallery Fronts	028	12	1	BP
Cellhouse, Guard Hall Gratings	013	12	2	BP
Cellhouse, Guards Gallery Ceiling	030	12	1	BP
Cellhouse, Guards Gallery, Ceiling Grating	029	12	1	BP
Cellhouse, Guards Gallery, Ceiling Grating	062	12	1	BP
Cellhouse, Hall Door, Control Arrangement & Assembly	283	12	1	BP
Cellhouse, Hospital, General Arrangement	278	12	1	VM
Cellhouse, Hospital, General Arrangement	278	Mega 2	1	BP
Cellhouse, Hospital, Glass Block Panel	256	12	1	TR
Cellhouse, Hospital, Halls, Basement Shower Room	105	12	2	BP
Cellhouse, Hospital, Proposed Strip Cells	089	12	2	VM
Cellhouse, Hospital, Stairs	104	12	2	BP
Cellhouse, Hospital, Ward, Kitchen Stores	103	12	2	BP
Cellhouse, Hospital, Ward, Office, toilet	102	12	1	BP

Item Desc.	Drwg. #	Fldr. #	Copies	Frmt.
Cellhouse, Inlet Box, Sound Proof Cells	079	13	1	BP
Cellhouse, Layout of New Enclosed Gun Gallery	282	13	1	DZ
Cellhouse, Library Doors	010	13	1	BP
Cellhouse, Lighting Fixtures	073B	13	1	BP
Cellhouse, Locking Device	002	13	1	BP
Cellhouse, Locking Device	003	13	2	BP
Cellhouse, Locking Device For Cell Doors [2 copies; 1 has notation on verso]	215	13	2	BP
Cellhouse, Main Cell Room Stair Doors	008	13	2	BP
Cellhouse, Misc. (Dental Chair Floor Plan, Etc.)	073A	13	2	BP
Cellhouse, Mod. of Hospital Rooms 1-10 Including Details	085	Mega 2	2	BP
Cellhouse, Mod. of Hospital, Cell Locking Device	100	Mega 2	2	BP
Cellhouse, Mod. of Hospital, Demolition Plan	082	Mega 2	2	BP
Cellhouse, Mod. of Hospital, Electrical	087	Mega 2	2	BP
Cellhouse, Mod. of Hospital, Existing 2nd Floor Framing Plan	083	Mega 2	2	BP
Cellhouse, Mod. of Hospital, Heating & Ventilating	086	Mega 2	2	BP
Cellhouse, Mod. of Hospital, Misc. Details	101	Mega 2	2	BP
Cellhouse, Partitions	206	14	2	BP
Cellhouse, Partitions	207	14	1	BP
Cellhouse, Proposed Hospital Rooms	092	14	1	BP
Cellhouse, Proposed Strip Cells	088	14	2	BP
Cellhouse, Proposed Ward Rooms	091	14	1	BP
Cellhouse, Pull Bar Gears	012	14	1	BP
Cellhouse, Reconstruction of Hospital, Floor Plan	084	Mega 2	2	BP
Cellhouse, Relocation of Officers Change Room	304	14	1	TR
Cellhouse, Restraint Rooms	093	14	2	BP
Cellhouse, Restraint Rooms, Backwards Copy	095	14	1	DZ
Cellhouse, Restraint Rooms, Mech. & Elec.	096	14	2	BP
Cellhouse, Restraint Rooms, Mech. & Elec.	097A	14	1	DZ
Cellhouse, Restraint Rooms, Voided Section	094	14	2	DZ
Cellhouse, Revision to Proposed Changes In Hospital	090	15	1	BP
Cellhouse, Roof Screens	006	15	1	BP
Cellhouse, Setting Plans of Gun Guard Balcony	027	15	2	BP
Cellhouse, Stairs	019	15	1	BP
Cellhouse, Stairs, A-C	234	15	1	BP
Cellhouse, Steel Sash Window Details	266	15	1	BP
Cellhouse, Uni Lock On Double Plate Doors	226	15	1	BP
Cellhouse, Various, Visitors Speaking Panel, Morgue Skylight [2 copies; 1 has notations on verso]	227	15	2	BP
Cellhouse, Window Guards	004	01	1	BP
Cellhouse, Window Guards	021A	03	2	BP
Cellhouse, Window Guards	021B	03	1	BP
Cellhouse, Window Guards	021C	03	1	BP
Cellhouse, Window Guards	021D	03	1	BP
Cellhouse, Window Guards	271	23	2	BP
Cellhouse, Window Guards & Basement Door	272	23	1	BP
Chair # 4, Slip Cover Pattern	294	25	1	BP
Chair #12, Slip Cover Patterns	276	Roll 1	1	BP
Comparison Charts, Fuel, Electrical, Water	201	17	2	BP
Detail of Gun Ports And Vision Panels	268	17	1	DZ
Dock Details	161	17	1	BP

Item Desc.	Drwg. #	Fldr. #	Copies	Fmt.
Dock Details [2 copies; 1 is a fragment]	162	17	2	BP
Dock Revisions	146	17	1	BP
Dock Slabs	157	17	1	BP
Dock, Admittance Bldg.	164	17	2	BP
Dock, Admittance Bldg.	165	17	2	BP
Dock, Admittance Bldg.	166	17	2	BP
Dock, Concrete Dock Details	147	17	2	BP
Dock, Concrete Dry	163	17	1	BP
Dock, Connection Timber to Concrete Dock, Etc.	149	17	2	BP
Dock, Detail of Piers At Entrance	295	17	1	BP
Dock, Details Launch Landing	152	17	2	BP
Dock, Girders	155	18	1	BP
Dock, Girders	156	18	1	BP
Dock, Girders, 7 Slabs, Layout Plan	158	18	1	BP
Dock, Piping Details	151	Mega 4	2	BP
Dock, Plan of New Extension to Ramp At Landing	167	18	2	BP
Dock, Proposed Boat Slip For New Boat	159	18	2	DZ
Dock, Reinforcing Details	150	18	2	BP
Dock, Sectional Elevations	153	17	2	BP
Dock, Survey Plan	160	Mega 4	1	BP
Dock, Timber Dock Details	148	18	2	BP
Dock, Tower Details	154	Mega 4	3	BP
Dock, Water & Oil Piping [Fragment]	297	18	1	BP
Dormitories, Alteration to, Cupboards, Etc.	128	19	2	DZ
Dormitories, Alterations to, Ranges, Fridges	127	19	2	DZ
Dormitories, Pantry Unit For Meeting Room	126	19	2	BP
Dormitories, Plans & Interior Details	125	19	2	BP
Dormitory A, Alteration to Type 1	113	19	2	DZ
Dormitory A, Alterations to	118	19	2	DZ
Dormitory A, Staff Officers, Alternate 2, Extension to A.	120	19	1	BP
Dormitory A, Staff Officers, Heating & Ventilating	122	19	2	BP
Dormitory A, Staff Officers, Type 1 Exterior	124	19	2	BP
Dormitory A, Staff Officers, Type 1, Plumbing	121	19	2	BP
Dormitory A, Type 1	301	19	1	DZ
Dormitory, Staff Officers	117	20	2	BP
Dormitory, Staff Officers, 2nd Floor Framing	116	20	1	BP
Dormitory, Staff Officers, 3 Levels	296	20	3	VM
Dormitory, Staff Officers, Foundation Plan	115	20	2	BP
Dormitory, Staff Officers, Pantry Unit For Meeting Room	288	20	1	BP
Dormitory, Staff Officers, Plans & Interior	287	20	1	BP
Electrical Transmission, Roadway, Sanitary Sewer	246	20	1	BP
Fresh Water & Steam Flow Diagrams	188	21	2	BP
Fresh Water Flow Diagram [Fragment]	249	21	1	BP
Housing Group, Alternate #2, Extension to Bldg	119	21	1	BP
Housing Group, Approach Plan	106	21	2	BP
Housing Group, Apt. House 3	142	21	2	BP
Housing Group, Apt. House 3, Heating & Ventilation	141	21	2	BP
Housing Group, Apt. House B&C, Balcony Enclosures	145	21	1	DZ
Housing Group, Apt. House B&D, Heating & Ventilating	133	21	2	BP

Item Desc.	Drwg. #	Fldr. #	Copies	Frmt.
Housing Group, Apt. House B&D, Plumbing	132	21	2	BP
Housing Group, Apt. House B, Glass Enclosure, for 1st Floor	136	21	2	DZ
Housing Group, Apt. House B, Interior Details	135	21	2	BP
Housing Group, Apt. House B, New Mail Room	286	21	1	BP
Housing Group, Apt. House B, Type 2	130A	21	2	BP
Housing Group, Apt. House B, Type 2	130B	21	2	BP
Housing Group, Apt. House B, Type 2	131	21	1	BP
Housing Group, Apt. House C	137	22	2	BP
Housing Group, Apt. House C	138	22	2	BP
Housing Group, Apt. House C	143	22	1	BP
Housing Group, Apt. House C, Alternate #3	139	22	1	BP
Housing Group, Apt. House C, Conduit & Lights [2 copies; 1 is a fragment w/notation from occupation on verso]	140	22	2	BP
Housing Group, Apt. House C, Exterior Details	285	22	2	BP
Housing Group, Apt. House Exterior Details	144	22	1	BP
Housing Group, Apt. House, Exterior Details	134	22	2	BP
Housing Group, Conduit & Lighting	123	22	2	BP
Housing Group, Electrical Service	107	22	2	BP
Housing Group, Elevations & Sections	114	22	2	BP
Housing Group, Elevations & Sections	129	22	2	BP
Housing Group, Floor Layout, A-B-C	111	23	2	BP
Housing Group, General Plan, Schedules, Etc.	112	23	2	BP
Housing Group, Lighting Fixtures, Misc.	253	23	2	BP
Housing Group, Mechanical Services	108	23	2	BP
Housing Group, Misc. Drawings, Various Details	261	23	1	BP
Housing Group, Misc. Standard Details	255	23	2	BP
Housing Group, Misc. Standard Details	260	23	2	BP
Housing Group, Misc. Toilet Room, Parcel Post Chute	284	23	1	BP
Housing Group, Revised Window Details	110	23	1	BP
Housing Group, Typical Details, Bldgs A-D	109	23	2	BP
Housing Group?, Plumbing Details, Misc. Drawing #305-J	267	23	1	BP
Indust. Bldg. Arch. & Structural Cross Sect.	252	Mega 3	1	BP
Indust. Bldg. Architectural Elevations	170	Mega 3	2	BP
Indust. Bldg., 1st & 2nd Floor Plans	169	Mega 4	2	BP
Indust. Bldg., Approach & Roof Plans	168	Mega 4	2	BP
Indust. Bldg., Architectural Cross Sections	175	Mega 3	1	BP
Indust. Bldg., Architectural Laundry Details	176	Mega 3	2	BP
Indust. Bldg., Cross Sections	251	Mega 3	1	BP
Indust. Bldg., Electrical	180	Mega 3	1	BP
Indust. Bldg., Mechanical Machinery Layout	178	Mega 3	2	BP
Indust. Bldg., Pile Foundations	250	Mega 4	1	BP
Indust. Bldg., Plumbing & Heating	179	Mega 3	2	BP
Indust. Bldg., Plumbing & Heating	275	Mega 4	1	BP
Indust. Bldg., Plumbing Drainage	181	Mega 3	1	BP
Indust. Bldg., Shops, 1st Floor	273	Mega 4	2	BP
Indust. Bldg., Structural , Reinf. Details	177	Mega 3	2	BP
Indust. Bldg., Structural Foundation & First Floor Plans	171	Mega 3	1	BP
Indust. Bldg., Structural, 2nd Floor & Roof	174	Mega 3	2	BP
Indust. Bldg., Structural, 2nd Floor & Roof Framing	173	Mega 3	1	BP
Indust. Bldg., Structural, Found. & 1st Floor [2 copies; 1 is a fragment]	172	Mega 3	2	BP

Item Desc.	Drwg. #	Fldr. #	Copies	Fmt.
Model Bldg., No. 82, 3rd Floor	184	23	1	BP
Model Bldg., No. 82, Roof Plan	183	23	1	BP
Model Bldg., North Elevation	182	23	1	BP
Oil Storage Tank, Piping (Proposed)	200	23	1	BP
Oil Storage, Misc. Details	194	23	1	BP
Oil Storage, Misc. Details	248	23	1	BP
Power House, Breeching, Smokestack	195	24	1	BP
Power House, Elevations	193	24	2	BP
Power House, Foundation Plan	192	24	1	BP
Power House, General View	191	24	1	BP
Power House, Generator Panel	198	24	2	BP
Power House, Piping Details	197	24	1	BP
Power House, Stack	196	24	1	BP
Pump House, General Elevations	189	25	2	BP
Pump House, Plans	190	25	2	BP
Railings & Canopy	269	25	1	DZ
Concrete Columns C/2 to C/8 Incl., Removal of	254	25	2	BP
Retaining Wall, Concrete	237	25	2	BP
Rifle, U.S. Caliber 30, M1, Parts Assemblage Poster	306	25	3	//
Roadway, Details of Hydrants	247	25	2	BP
Roadway, Details of Trench	244	25	2	BP
Roadway, Details of Trench	245	25	2	BP
Roadway, Electrical Transmission, Sanitary Sewer	246	20	1	BP
Sanitary Sewer, Roadway, Electrical Transmission,	246	20	1	BP
Tank, Stress Diagram For 250,000 Gal. Elevated	262	26	1	BP
Tower D, Steel Walkways, Supports, Bents	240	26	1	DZ
Tower, Proposed Guard Walkways & Supports	187	26	1	DZ
Tower, Proposed On Bldg. 82, W/Guard Walkways	185	26	1	BP
Tower, Proposed, Steel Guard Walkways, Supports	186	26	1	DZ
Tower, Steel Walkways & Supports	239	26	1	DZ
Tower, Structural Steel Details	238	26	1	DZ