

ORV: Dirty Devil



— Paved Designated Road

Open to Conventional Vehicles and Street-Legal ATVs

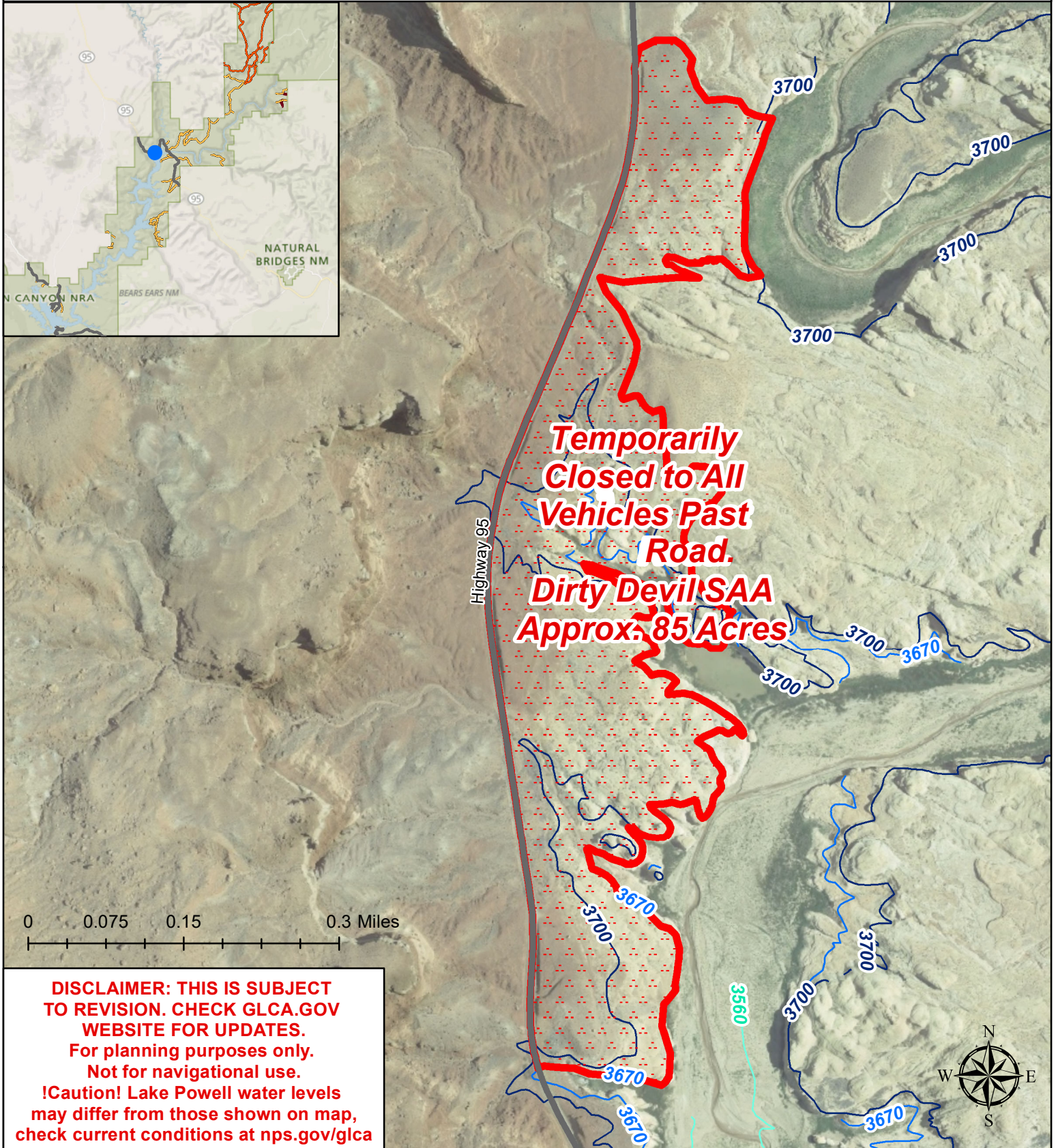
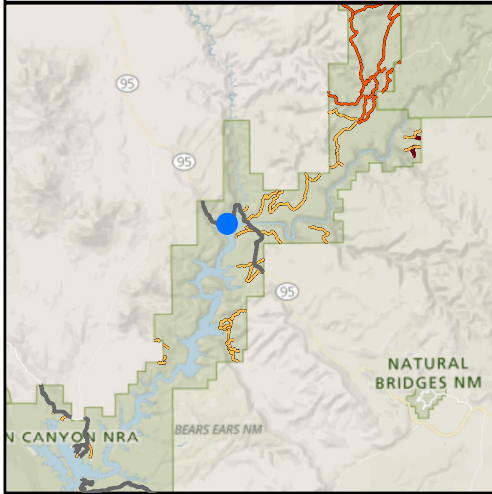
— Unpaved Designated Road

Open to Conventional Vehicles, OHVs, and Street-Legal ATVs



TEMPORARILY CLOSED TO ALL VEHICLES Shoreline Access Area (SAA)

**A permit system for vehicles to operate in designated SAA & ORV routes is in development.*



Temporarily Closed to All Vehicles Past Road. Dirty Devil SAA Approx. 85 Acres

DISCLAIMER: THIS IS SUBJECT TO REVISION. CHECK GLCA.GOV WEBSITE FOR UPDATES. For planning purposes only. Not for navigational use. !Caution! Lake Powell water levels may differ from those shown on map, check current conditions at nps.gov/glca