

ORV: Crosby Canyon

Glen Canyon NRA and Rainbow Bridge NM
National Park Service
U.S. Department of the Interior



 Paved Designated Road

Open to Conventional Vehicles and Street-Legal ATVs

 Unpaved Designated Road

Open to Conventional Vehicles, OHVs, and Street-Legal ATVs

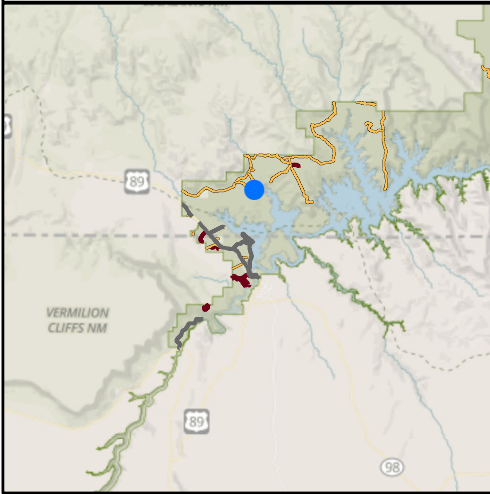


TEMPORARILY CLOSED TO ALL VEHICLES Shoreline Access Area (SAA)



End of Designated Road: TEMPORARILY CLOSED TO ALL VEHICLES PAST THIS POINT

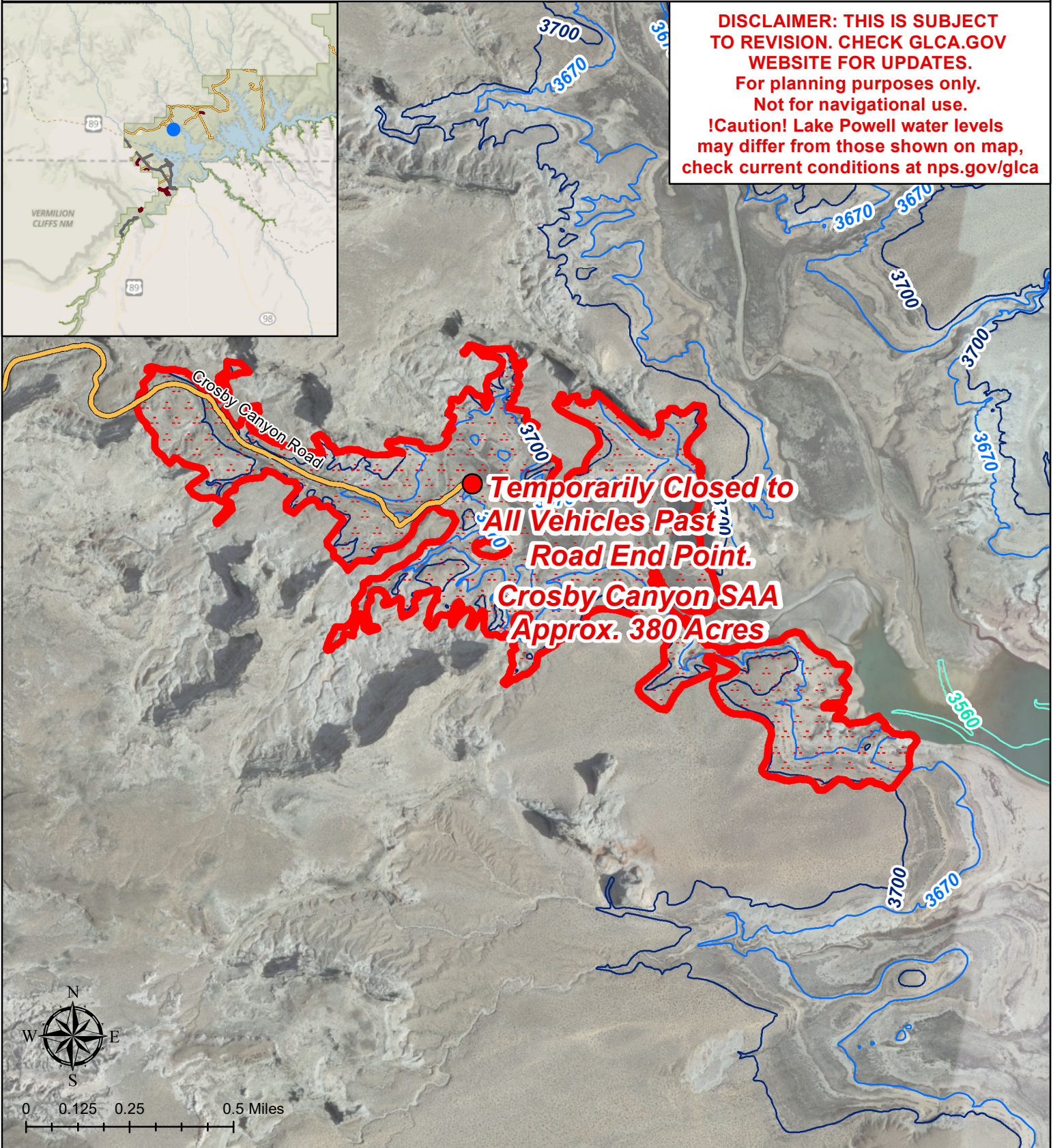
**A permit system for vehicles to operate in designated SAA & ORV routes is in development.*



DISCLAIMER: THIS IS SUBJECT TO REVISION. CHECK GLCA.GOV WEBSITE FOR UPDATES.

For planning purposes only. Not for navigational use.

!Caution! Lake Powell water levels may differ from those shown on map, check current conditions at [nps.gov/glca](https://www.nps.gov/glca)



0 0.125 0.25 0.5 Miles