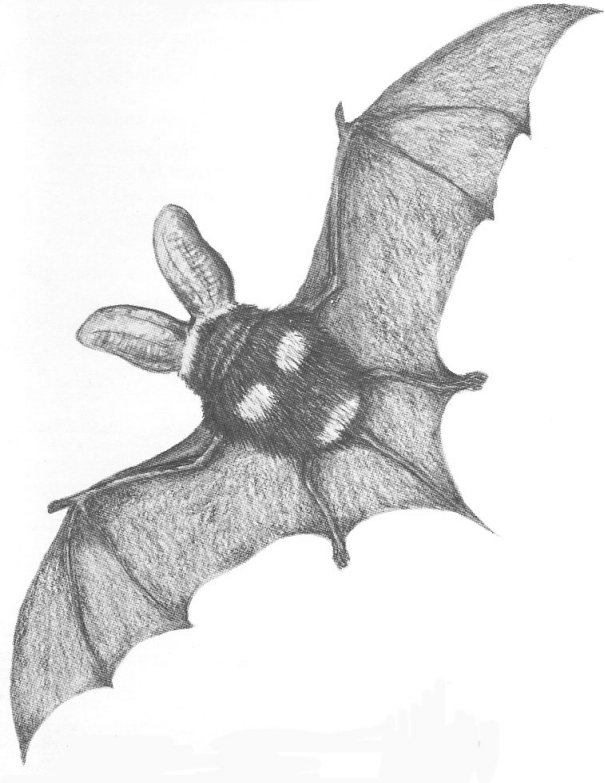


Fish, Amphibians, Reptiles and Mammals ...

A Species Checklist for The Gila National Forest



United States
Department of
Agriculture

PREPARED BY
Forest Service

Southwestern
Region

PRODUCED IN COOPERATION WITH
Southwestern New Mexico Audubon Society
& Department of Natural Science,
Western New Mexico University

Using the Checklist

Vegetation types on the Gila National Forest range from spruce/fir on the Mogollon Mountains and the Black Range, to Desert Scrub and remnant Grassland at lower elevations in the Burro Mountains. Ponderosa pine is the dominant species at mid-elevations, 6,000 to 7,000 feet. Piñon/Juniper or oak/juniper/piñon woodland is found on drier sites throughout the forest. This extreme range in elevation and the many corresponding vegetation types provide for a diverse fauna which includes 30 fish species, 11 amphibians, 44 reptiles and 84 mammals. Resident status is given only for migratory bats (see below). The remaining categories describe the habitat(s) where one is most likely to encounter each species, and specific habitat requirements.

Checklist Key

C – Common	U – Uncommon
F – Fairly Common	X -- Extirpated
R – Rare	

Vegetation Type Preference

- | | |
|-------------------|---------------------|
| 1. Desert | 6. Spruce-Fir |
| 2. Oak Woodland | 7. Mt. Grassland |
| 3. Oak-Juniper | 8. Marsh/Open |
| 4. Piñon-Juniper | 9. Decid. Riparian |
| 5. Ponderosa Pine | 10. Conif. Riparian |

Residency

The Residence column is for bats only and lists the time of year each Species normally appears in the checklist area.

P – Permanent Resident
S – Summer Resident
W – Winter Resident

Federal Status

The particular status of species that are “listed” is shown in parenthesis following the name.

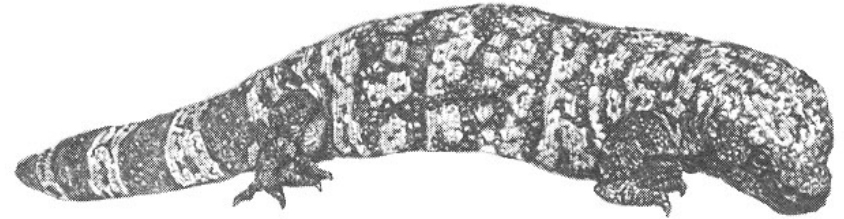
E-Endangered	T-Threatened	S- Sensitive	*R-Reintroduced
--------------	--------------	--------------	-----------------

Illustrations by Hank Pavlovich

**The Mexican Gray Wolf was reintroduced to the area in 1998. Information on this species was added to this listing by the staff of the Gila Visitor Center in March 2004.*

	Abundance	Residence	Desert	Oak Woodland	Oak-Juniper	Pinyon-Juniper	Ponderosa Pine	Spruce-Fir	Mt. Grassland	Marsh/Open	Decid. Riparian	Conif. Riparian
Skinks - Scincidae												
— Many-lined Skink <i>Eumeces multivirgatus</i>	U						■	■				
— Great Plains Skink <i>Eumeces obsoletus</i>	F			■	■	■						
Teids (Whiptails) - Teiidae												
— Chihuahuan Spotted Whiptail <i>Cnemidophorus exsanguis</i>	F					■	■					
— Desert Grassland Whiptail <i>Cnemidophorus uniparens</i>	C		■	■	■	■						
— Western Whiptail <i>Cnemidophorus tigris</i>	C		■	■								
— Gila Spotted Whiptail <i>Cnemidophorus flagellicaudus</i>	F				■	■	■					
Anguids - Anguidae												
— Madrean Alligator Lizard <i>Elgaria kingii</i>	F				■	■						
Slender Blind Snakes Leptotyphlopidae												
— Texas Blind Snake <i>Leptotyphlops dulcis</i>	R				■	■						
— Western Blind Snake <i>Leptotyphlops humilis</i>	U			■	■	■						
Colubrids - Colubridae												
— Black-necked Garter Snake <i>Thamnophis cyrtopsis</i>	C										■	
— Narrowhead Garter Snake <i>Thamnophis rufipunctatus</i>	U								■	■		
— Checkered Garter Snake <i>Thamnophis marcianus</i>	F										■	
— Western Terrestrial Garter Snake - <i>Thamnophis elegans</i>	C										■	■
— Striped Whipsnake <i>Masticophis taeniatus</i>	C				■	■						
— Ring-necked Coachwhip Snake <i>Masticophis flagellum</i>	C		■	■								
— Bull Snake <i>Pituophis melanoleucus</i>	C		■	■	■	■						
— Big Bend Patchnose Snake <i>Salvadora deserticola</i>	F			■	■							
— Mountain Patchnose Snake <i>Salvadora grahamiae</i>	U					■						
— Plains Blackhead Snake <i>Tantilla nigriceps</i>	U		■	■	■	■						
— Common Kingsnake <i>Lampropeltis getulus</i>	U			■	■	■						

	Abundance	Residence	Desert	Oak Woodland	Oak-Juniper	Pinyon-Juniper	Ponderosa Pine	Spruce-Fir	Mt. Grassland	Marsh/Open	Decid. Riparian	Conif. Riparian
— Southwestern Blackhead Snake <i>Tantilla hobartsmithi</i>	R		■	■	■							
— Sonora Mountain Kingsnake <i>Lampropeltis pyromelana</i>	U					■	■	■				
Coral Snakes-Elapidae												
— Arizona Coral Snake <i>Micruroides euryxanthus</i>	R				■	■						
Pit Vipers - Crotalidae												
— Black-tailed Rattlesnake <i>Crotalus molossus</i>	C				■	■	■	■				
— Western Diamond-backed Rattlesnake - <i>Crotalus atrox</i>	C		■	■	■							
— Western Rattlesnake <i>Crotalus viridis</i>	C		■	■	■	■	■					
— Rock Rattlesnake <i>Crotalus lepidus</i>	U				■	■	■					



	Abundance	Residence	Desert	Oak Woodland	Oak-Juniper	Pinyon-Juniper	Ponderosa Pine	Spruce-Fir	Mt. Grassland	Marsh/Open	Decid. Riparian	Conif. Riparian
Mammals												
Shrews - Soricidae												
— Merriam's Shrew <i>Sorex merriami</i>	R						■	■				
— Dusky Shrew <i>Sorex monticolus</i>	C							■				

	Abundance	Residence	Desert	Oak Woodland	Oak-Juniper	Pinyon-Juniper	Ponderosa Pine	Spruce-Fir	Mt. Grassland	Marsh/Open	Decid. Riparian	Conif. Riparian
Desert Shrew <i>Notiosorex crawfordi</i>	C		■	■	■	■						
Plain Nose Bats Vespertilionidae												
Southwestern Myotis <i>Myotis auriculatus</i>	F	S	■	■	■	■						
Yuma Myotis <i>Myotis yumanensis</i>	U	S		■	■	■						
Long-eared Myotis <i>Myotis evotis</i>	C	S				■	■					
Fringed Myotis <i>Myotis thysanodes</i>	C	P		■	■	■	■					
Long-legged Myotis <i>Myotis volans</i>	C	S		■	■	■	■					
California Myotis <i>Myotis californica</i>	C	S		■	■	■						
Little Brown Myotis <i>Myotis lucifuga</i>	U	S				■	■					
Western Small-footed Myotis <i>Myotis leibii</i>	C	P		■	■	■						
Silver-haired Bat <i>Lasionycteris noctivagans</i>	C	S		■	■	■	■					
Western Pipistrelle <i>Pipistrellus hesperus</i>	C	S		■	■	■						
Big Brown Bat <i>Eptesicus fuscus</i>	C	P		■	■	■	■					
Hoary Bat <i>Lasiurus cinereus</i>	C	T		■	■	■	■					
Western Red Bat <i>Lasiurus blosseuillii</i>	R	S									■	
(Allen's) Mexican Big-eared Bat <i>Idionycteris phyllotis</i>	F	S				■	■					
Spotted Bat <i>Euderma maculatum</i>	R	S			■	■	■	■				
Big-eared Bats												
Townsend's Bat <i>Plecotus townsendii</i>	C	P		■	■	■						
Pallid Bat <i>Antrozous pallidus</i>	C	S		■	■	■						
Freetailed Bat - Molossidae												
Mexican Free-tailed Bat <i>Tadarida brasiliensis</i>	F	T		■	■	■	■					
Hares and Rabbits Leporidae												
Black-tailed Jack Rabbit <i>Lepus californicus</i>	F		■	■	■	■						
Desert Cottontail <i>Sylvilagus audubonii</i>	C		■	■	■	■						
Eastern Cottontail <i>Sylvilagus floridanus</i>	U					■	■					

	Abundance	Residence	Desert	Oak Woodland	Oak-Juniper	Pinyon-Juniper	Ponderosa Pine	Spruce-Fir	Mt. Grassland	Marsh/Open	Decid. Riparian	Conif. Riparian
Squirrels Sciuridae												
Abert's Squirrel <i>Sciurus aberti</i>	C						■					
Arizona Gray Squirrel <i>Sciurus arizonensis</i>	U										■	
Red Squirrel <i>Tamiasciurus hudsonicus</i>	C							■				
Gunnison's Prairie Dog <i>Cynomys gunnisoni</i>	R				■				■			
Spotted Ground Squirrel <i>Spermophilus spilosoma</i>	U		■						■			
Rock Squirrel <i>Spermophilus variegatus</i>	C		■	■	■	■	■					
Thirteen-lined Ground Squirrel <i>Spermophilus tridecemlineatus</i>	R								■			
Golden-mantled Ground Squirrel <i>Spermophilus lateralis</i>	C						■	■				
Cliff Chipmunk <i>Tamias dorsalis</i>	C			■	■	■	■					
Gray-collared Chipmunk <i>Tamias cinereicollis</i>	F							■				
Pocket Gophers - Geomyidae												
Botta's Pocket Gopher <i>Thomomys bottae</i>	C			■	■	■	■	■	■			
Kangaroo Rats and Pocket Mice - Heteromyidae												
Desert Pocket Mouse <i>Chaetodipus penicillatus</i>	F		■	■	■							
Silky Pocket Mouse <i>Perognathus flavus</i>	U		■	■	■				■			
Ord's Kangaroo Rat <i>Dipodomys ordii</i>	F			■	■	■						
Merriam's Kangaroo Rat <i>Dipodomys merriami</i>	C		■	■	■							
Native Rats, Mice and Voles - Muridae												
Northern Grasshopper Mouse <i>Onychomys leucogaster</i>	U			■	■	■						
Southern Grasshopper Mouse <i>Onychomys arenicola</i>	U			■	■	■						
Western Harvest Mouse <i>Reithrodontomys megalotis</i>	F			■	■	■						
Northern Rock Mouse <i>Peromyscus nasutus</i>	F				■	■	■					
Cactus Mouse <i>Peromyscus eremicus</i>	C			■	■							

	Abundance	Residence	Desert	Oak Woodland	Oak-Juniper	Pinyon-Juniper	Ponderosa Pine	Spruce-Fir	Mt. Grassland	Marsh/Open	Decid. Riparian	Conif. Riparian
Grateful Mouse <i>Peromyscus gratus</i>	U				■	■						
Deer Mouse <i>Peromyscus maniculatus</i>	C		■	■	■	■	■	■				
White-footed Mouse <i>Peromyscus leucopus</i>	F			■	■	■						
Brush Mouse <i>Peromyscus boylii</i>	C				■	■	■					
Piñon Mouse <i>Peromyscus truei</i>	C				■	■						
Hispid Cotton Rat <i>Sigmodon hispidus</i>	C		■	■								
Yellow-bellied Cotton Rat <i>Sigmodon fulviventor</i>	C		■	■	■	■						
White-throated Woodrat <i>Neotoma albigula</i>	C			■	■	■	■					
Stephen's Woodrat <i>Neotoma stephensi</i>	F				■	■						
Mexican Woodrat <i>Neotoma mexicana</i>	F							■				
Montane Vole <i>Microtus montanus</i>	F						■	■				
Mexican Vole <i>Microtus mexicanus</i>	C						■	■				
Long-tailed Vole <i>Microtus longicaudus</i>	F						■	■				
Southern Red-backed Vole <i>Clethrionomys gapperi</i>	F							■				
Meadow Vole <i>Microtus pennsylvanicus</i>	X										■	
Muskrat <i>Ondatra zibethicus</i>	U										■	
House Mouse <i>Mus musculus</i>	U			■	■	■	■					
Beaver - Castoridae												
Beaver <i>Castor canadensis</i>	F									■	■	■
Porcupines - Erethizontidae												
Porcupine <i>Erethizon dorsatum</i>	U			■	■	■	■					
Dogs and Allies - Canidae												
Coyote - <i>Canis latrans</i>	C		■	■	■	■	■	■				
Gray Fox <i>Urocyon cinereoargenteus</i>	F				■	■	■					
Kit Fox - <i>Vulpes velox</i>	U		■	■								
Mexican Gray Wolf (E-*R) <i>Canis lupus baileyi</i>	R	P		■	■	■	■	■	■	■	■	■

	Abundance	Residence	Desert	Oak Woodland	Oak-Juniper	Pinyon-Juniper	Ponderosa Pine	Spruce-Fir	Mt. Grassland	Marsh/Open	Decid. Riparian	Conif. Riparian
Bears - Ursidae												
Black Bear <i>Ursus americanus</i>	F			■	■	■	■	■				
Raccoon and Allies - Procyonidae												
Raccoon <i>Procyon lotor</i>	F										■	
Ringtail <i>Bassariscus astutus</i>	F			■	■	■					■	
Coati <i>Nasua narica</i>	U			■	■	■						
Weasels, Skunks and Allies - Mustelidae												
Long-tailed Weasel <i>Mustela frenata</i>	U			■	■	■	■	■				
Badger <i>Taxidea taxus</i>	U		■	■	■	■						
Striped Skunk <i>Mephitis mephitis</i>	C					■	■					
Hooded Skunk <i>Mephitis macroura</i>	F			■	■							
Western Spotted Skunk <i>Spilogale gracilis</i>	F			■	■							
Common Hog-nosed Skunk <i>Conepatus mesoleucus</i>	U										■	
Cats - Felidae												
Bobcat <i>Felis rufus</i>	U			■	■	■	■	■				
Mountain Lion <i>Puma concolor</i>	U			■	■	■	■	■				
Javelina - Tayassuidae												
Collared Peccary (Javelina) <i>Tayassu tajacu</i>	F		■	■	■	■						
Deer and Allies Cervidae												
Elk or Wapiti <i>Cervus elaphus</i>	C			■	■	■	■	■	■		■	
Mule Deer <i>Odocoileus hemionus</i>	C		■			■	■	■	■		■	■
White-tailed Deer <i>Odocoileus virginianus</i>	F			■	■							
Pronghorn Antilocapridae												
Pronghorn <i>Antilocapra Americana</i>	F		■									
Bighorn Sheep Bovidae												
Bighorn Sheep <i>Ovis canadensis</i>	F			■	■	■						