

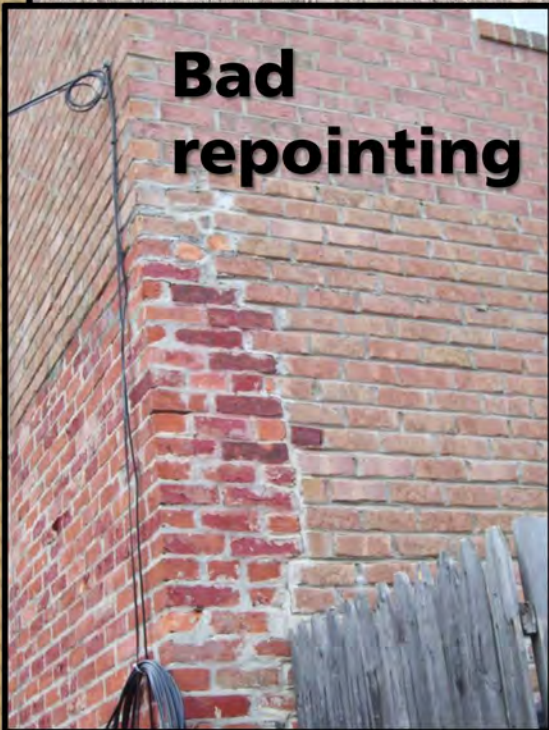
STANDARD 7:

Chemical or physical treatments, such as sandblasting, that cause damage to historic materials shall not be used. The surface cleaning of structures, if appropriate, shall be undertaken using the gentlest possible means.

**Saw cuts on surface
of stone**

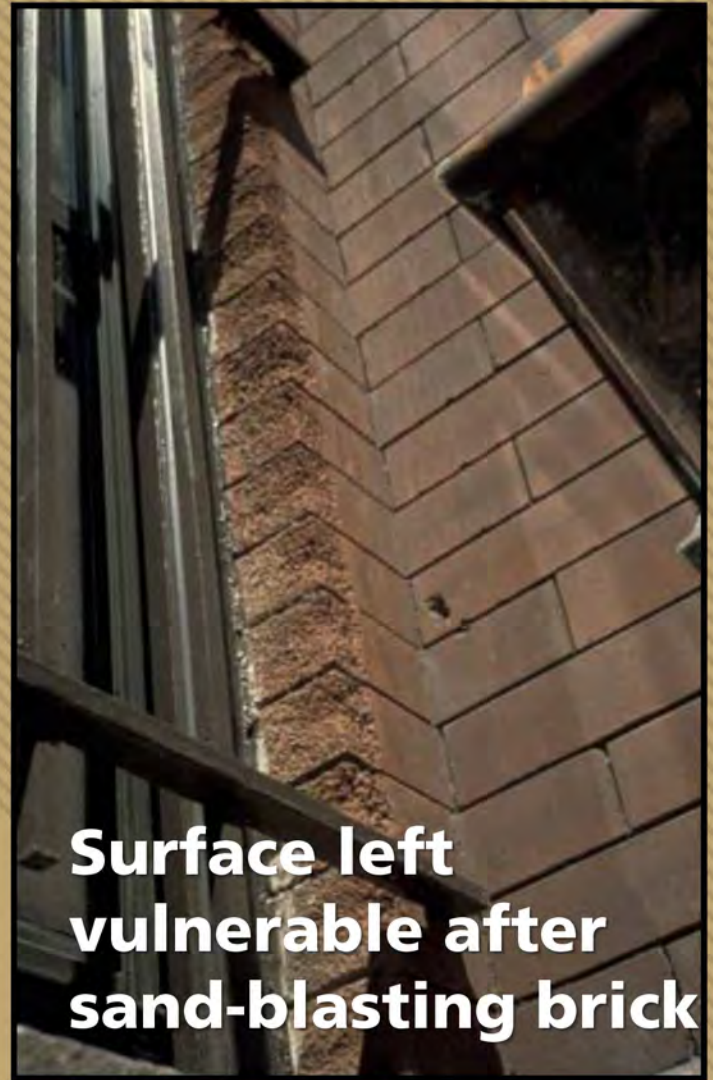


**Bad
repointing**



**Insensitive
masonry
treatments...**

**Surface left
vulnerable after
sand-blasting brick**



Hire an experienced mason!!

STANDARD 8:

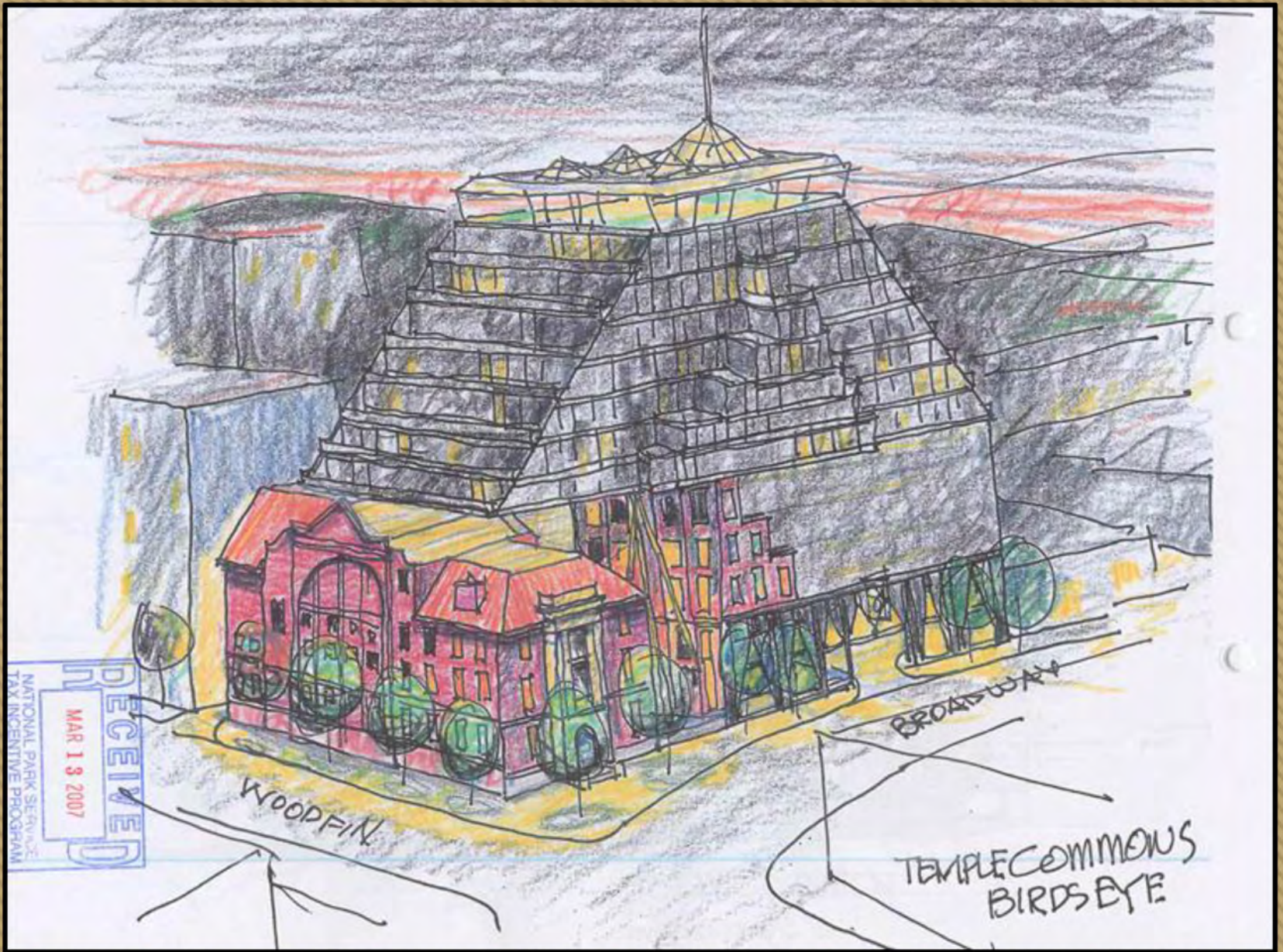
Significant archeological resources affected by a project shall be protected and preserved. If such resources must be disturbed, mitigation shall be undertaken.

Protect archeological resources...



STANDARD 9:

New additions, exterior alterations, or related new construction shall not destroy historic materials that characterize a property. The new work shall be differentiated from the old and shall be compatible with the massing, size, scale, and architectural features to protect the historic integrity of the property and its environment.



Egads!



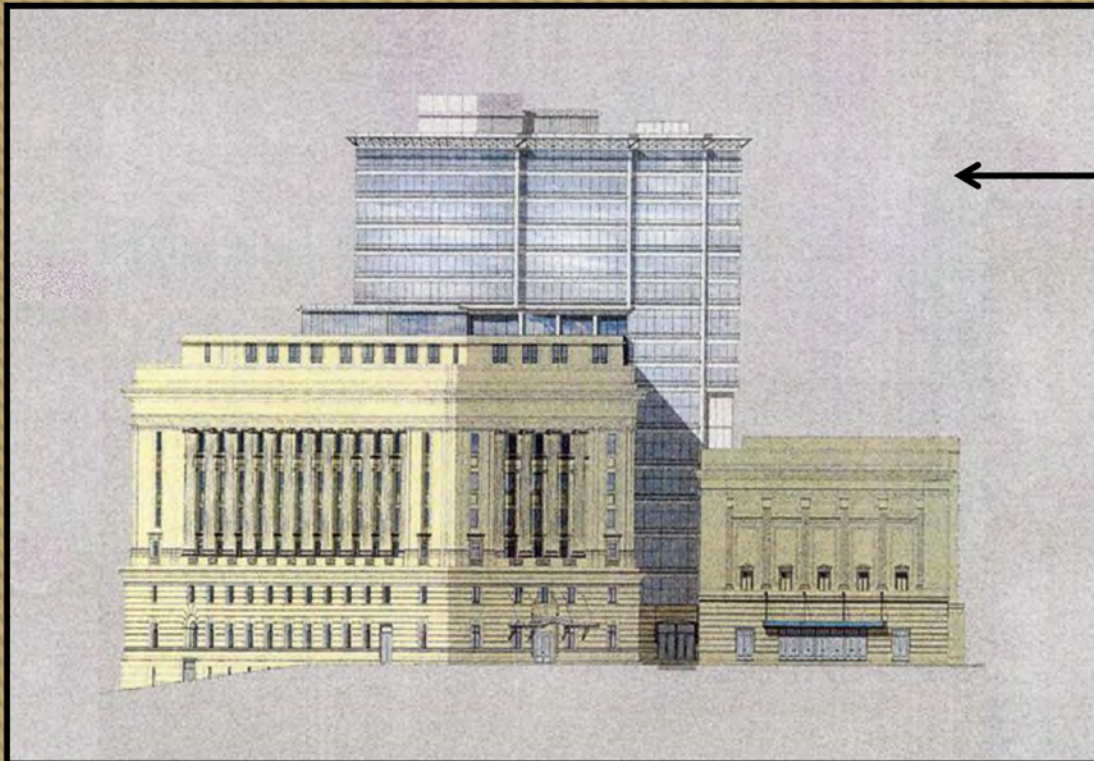
Incompatible Additions





Masonic Temple

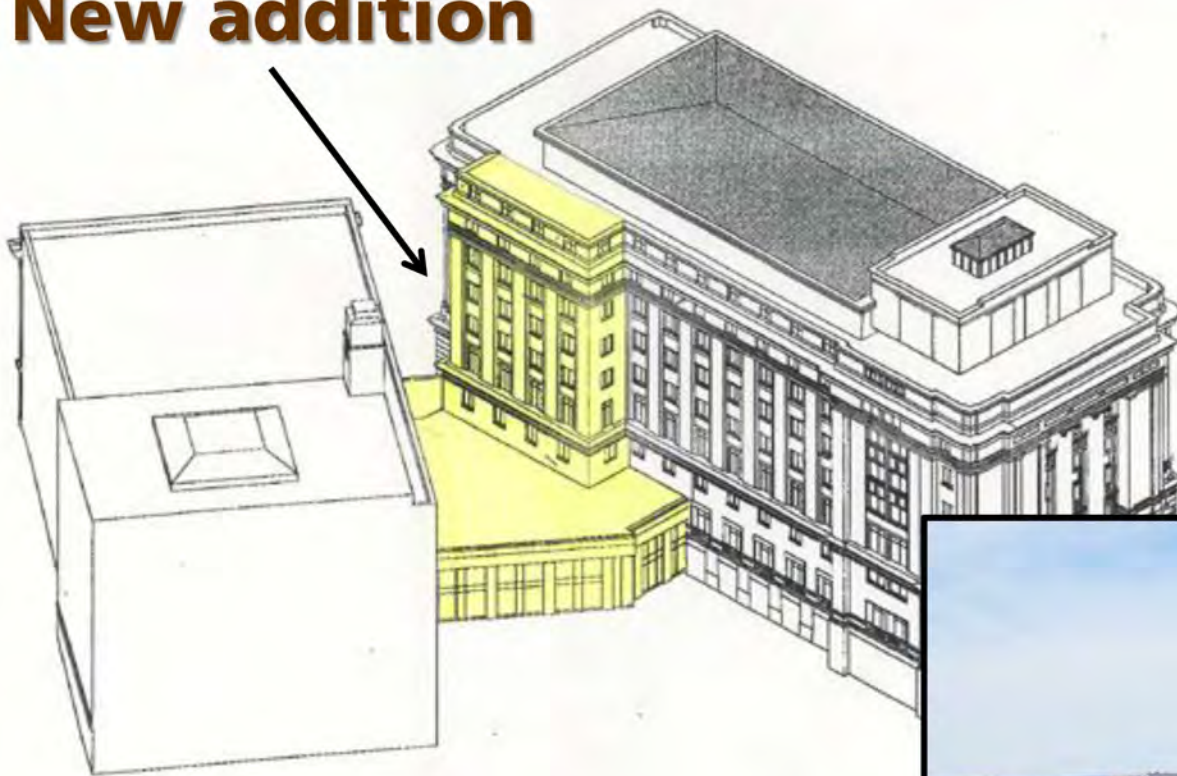
RI State Capitol



← **Proposed tower does not meet the Standards**

**Masonic Temple
Providence, RI**

New addition



**Addition
cannot
easily
be seen**



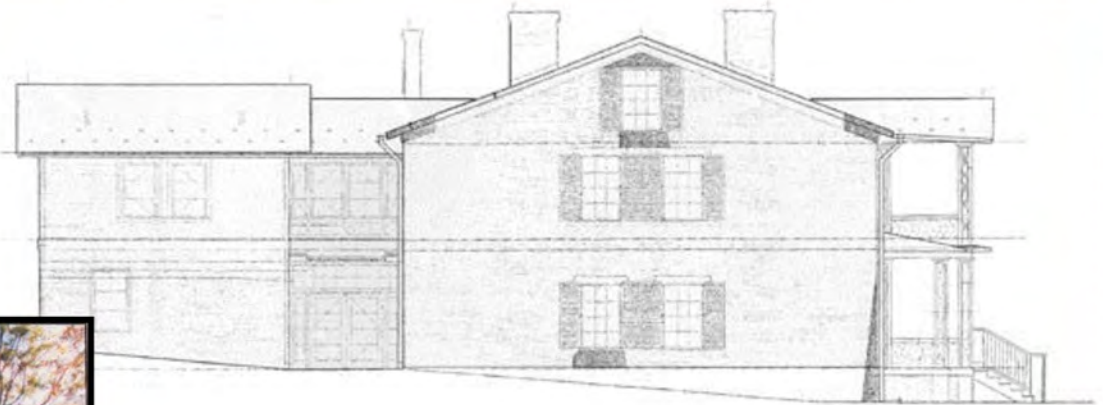
**Changed use to office and revised
proposal...now meets the Standards!**



Before



**Compatible
Addition**



After



Roof-top “Additions”

Yowzah!



Lower Manhattan



Apartment Building New Orleans, LA



**Compatible
rooftop
addition has
limited visibility**

STANDARD 10:

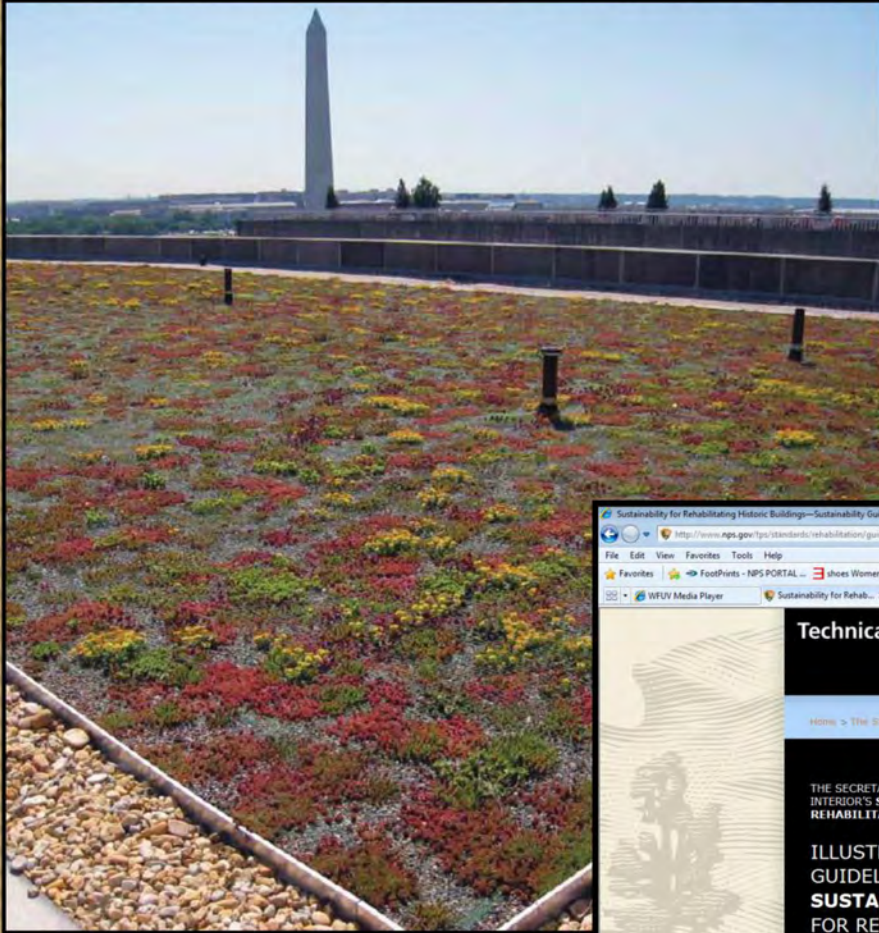
New additions and adjacent new construction shall be undertaken in a manner that if removed in the future, the essential form and integrity of the historic property and its environment would be unimpaired.



**Performance Hall
Vassar College
Poughkeepsie,
NY**

**Non-reversible
treatment...**





THE SECRETARY
OF THE INTERIOR'S
STANDARDS FOR
REHABILITATION &

ILLUSTRATED
GUIDELINES ON
SUSTAINABILITY
FOR

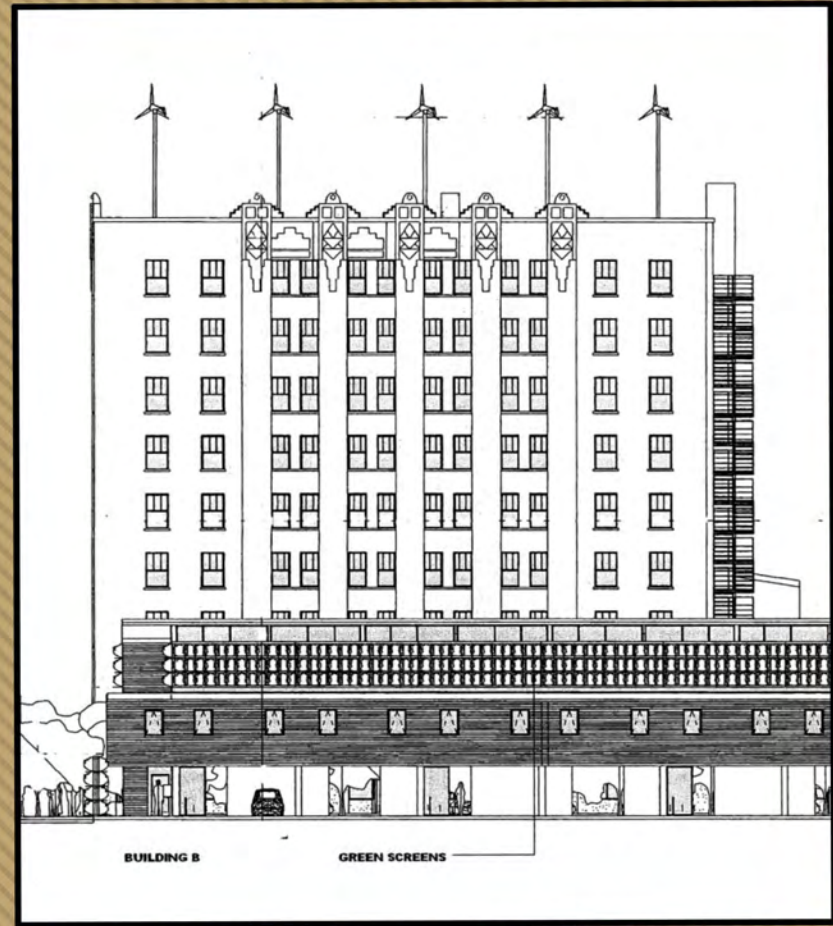
**Interactive
version**

The screenshot shows a web browser window with the URL <http://www.nps.gov/tps/standards/rehabilitation/guidelines/index.htm>. The page title is "Sustainability for Rehabilitating Historic Buildings—Sustainability Guidelines—Technical Preservation Services". The main content area features a large image of the Washington Monument and a green roof, with the following text: "THE SECRETARY OF THE INTERIOR'S STANDARDS FOR REHABILITATION & ILLUSTRATED GUIDELINES ON SUSTAINABILITY FOR REHABILITATING HISTORIC BUILDINGS". Below this is a navigation menu with "Guidelines Home" selected, and other options: "Introduction", "Sustainability", and "Planning". The authors are listed as "Anne E. Grimmer with Jo Ellen Hensley | Liz Petrella | Audrey T. Tepper, National Park Service, Technical Preservation Services". The browser's taskbar shows the date as 5/1/2013 and the time as 3:01 PM.

<http://www.nps.gov/tps/standards/applying-rehabilitation.htm>



Avoid these scenarios!





Flat-roofed buildings work well with solar panels

Panels are not visible from public view...





Terraced green roofs at National Bohemian Brewery, Baltimore, MD





**White roofs on
flat-roofed
buildings
cannot be seen
from the street**

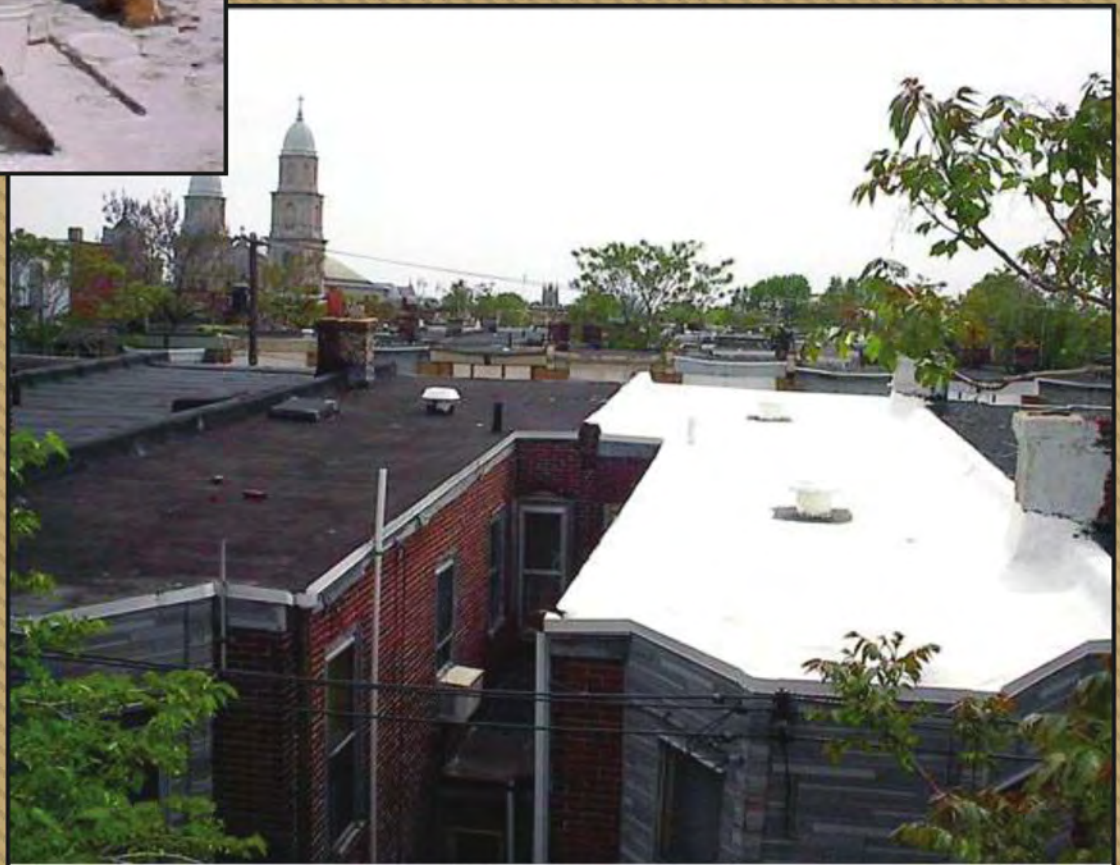


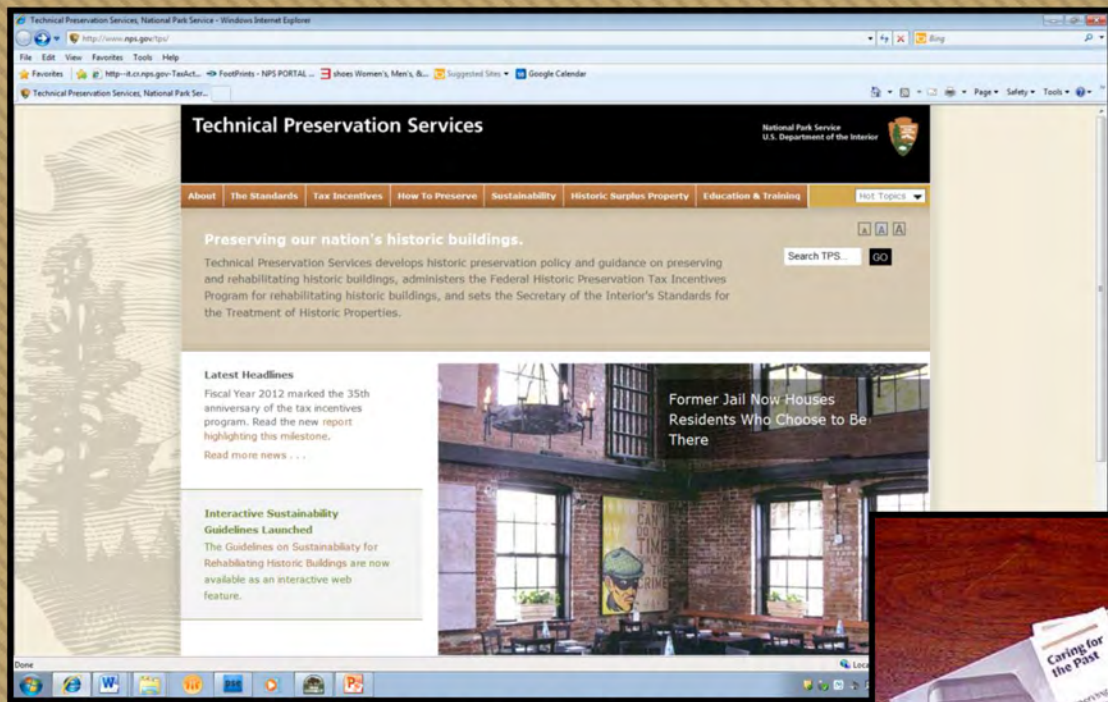
Image credited to "underdown.files.wordpress.com"

LEED Platinum



1700 High Street, Richmond, VA

For more tax and technical guidance...



www.nps.gov/tps

First-Time Users' Guide

National Park Service
U.S. Department of the Interior



Incentives

A GUIDE TO THE FEDERAL HISTORIC PRESERVATION TAX INCENTIVES PROGRAM FOR INCOME-PRODUCING PROPERTIES

Program Essentials Application Basics The Review Process Meeting the Standards for Rehabilitation **Avoiding Incompatible Work**



Photo: © 1996 Don Pearse
Photographers, Inc.

Incentives

Technical Preservation Services (TPS) has developed this information program to assist historic building owners, preservation consultants, community officials, architects and developers.

- ▶ **Program Essentials** answers questions about the 20% federal tax credit for rehabilitating historic buildings.
- ▶ **Application Basics** and **The Review Process** provide general guidance on the preparation and submission of application forms, documentation requirements, timing, reviews, and the overall decision-making process.
- ▶ **Meeting the Standards for Rehabilitation** explains how the Secretary of the Interior's Standards for Rehabilitation are applied to project work.
- ▶ **Avoiding Incompatible Work** shows examples of compatible and incompatible approaches to rehabilitation work.



This website provides basic information on the 20% tax credit.
It is not intended to replace the more complete TPS program material [online](#).

www.nps.gov/tps/tax-incentives/incentives/index

Audrey Tepper

Technical Preservation Services

www.nps.gov/tps



National Park Service
U.S. Department of the Interior

EXPERIENCE YOUR AMERICA