



**National Park Service
U.S. Department of the
Interior**

**Delaware Water Gap
National Recreation
Area**

1978 River Road
Bushkill, PA
18324

**Middle Delaware
National
Scenic and Recreational
River**

570-426-2452
www.nps.gov/dewa

Superintendent's Compendium of Designations, Closures, Permit Requirement and Other Restrictions Imposed Under Discretionary Authority

Approved:
Eamon Leighty, Acting Superintendent

A. INTRODUCTION

1. Superintendent's Compendium Described

The superintendent's compendium is the summary of park specific rules implemented under 36 Code of Federal Regulations (36 CFR). It serves as public notice, identifies areas closed for public use, provides a list of activities requiring either a special use permit or reservation, and elaborates on public use and resource protection regulations pertaining specifically to the administration of the park. The superintendent's compendium does not repeat regulations found in 36 CFR and other United States Code and CFR Titles, which are enforced without further elaboration at the park level.

The regulations contained in 36 CFR, Parts 1-7, are the basic mechanism used by the National Park Service (NPS) to preserve and protect the natural and cultural resources of the park and to protect visitors and property within the park. Parts 1 through 6 are general regulations applicable to all areas of the National Park Service, and part 7 contains special regulations specific to individual parks. Each of these parts has many sections and subsections articulating specific provisions. Within some of these part 1-7 sections and subsections, the superintendent is granted discretionary authority to develop local rules to be responsive to the needs of a specific park resource or activity, park plan, program, and/or special needs of the general public.

As an example, 36 CFR 1.5(a) *Closures and Public Use Limits* provides the

superintendent certain discretion in allowing or disallowing certain activities. The authority granted by the section, however, requires the superintendent to comply with the Administrative Procedures Act (6 USC Section 551), which requires public notice on actions with major impact on visitor use patterns, park resources or those that are highly controversial in nature.

Another example is 36 CFR 1.6 *Permits*, which allows the superintendent to require a permit for certain uses and activities in the park. This section, however, requires that a list of activities needing a permit (and a fee schedule for the various types of permits) be maintained by the park.

A final example is 36 CFR 2.1(c) (1) *Preservation of Natural, Cultural and Archeological Resources*, which provides the superintendent the authority to designate certain fruits, nuts, berries, or unoccupied seashells which may be gathered by hand for personal use or consumption. This activity can occur, however, only if a written determination shows that the allowed activity does not adversely affect park wildlife, the reproductive potential of a plant species, or otherwise adversely affect park resources.

This compendium should be used in conjunction with Title 36 CFR, Parts 1-7, to understand the regulations governing the use and enjoyment of all the areas of the national Park System more fully.

A copy of Title 36, CFR, can be purchased from the U.S. Government Printing Office at:

Superintendent of Documents
P.O. Box 371954
Pittsburgh, PA 15250-7954

The CFR is also available on the Internet at:

http://www.access.gpo.gov/nara/cfr/waisidx_05/36cfrv1_05.html

2. Laws and Policies Allowing the Superintendent to Develop This Compendium

The National Park Service (NPS) is granted broad statutory authority under 16 United States Code (U.S.C.) Section 1 *et seq.* (Organic Act of 1916, as amended) to "...regulate the use of the Federal areas known as national parks, monuments, and reservations...by such means and measures as conform to the fundamental purposes of the said parks...which purpose is to conserve the scenery and the natural and historic objects and the wildlife therein and to provide for the enjoyment of the same in such manner and by such means as will leave them unimpaired for the enjoyment for future generations" (16 U.S.C. Section 1). In addition, the NPS Organic Act allows the NPS, through the Secretary of the

Interior, to “make and publish such rules and regulations as he may deem necessary or proper for the use and management of the parks, monuments, and reservations under the jurisdiction of the National Park Service” (16 U.S.C. Section 3).

In 1970, Congress amended the NPS Organic Act to clarify its intentions as to the overall mission of the NPS. Through the General Authorities Act of 1970 (54 USC 100101(b) et seq), Congress brought all areas administered by the NPS into one National Park System and directed the NPS to manage all areas under its administration consistent with the Organic Act of 1916.

In 1978, Congress amended the General Authorities Act of 1970 and reasserted system-wide the high standard of protection defined in the original Organic Act by stating “Congress further reaffirms, declares, and directs that the promotion and regulation of the various areas of the National Park System, as defined by Section 1 of this Title, shall be consistent with and founded in the purpose established by Section 1 of this Title, to the common benefit of all people of the United States.”

16 U.S.C. Section 1c defines the National Park System as “...any areas of land and water now or hereafter administered by the Secretary of the Interior through the National Park Service for park, monument, historic, parkway, recreational, or other purposes.”

In addition to the above statutory authority, the superintendent is guided by established NPS policy as found in the *NPS Management Policies* (2006). The superintendent is also guided by more specific policies promulgated by the director, National Park Service, in the form of Director’s Orders. As stated in the Management Policies, the primary responsibility of the NPS is to protect and preserve our national natural and cultural resources while providing for the enjoyment of these resources by visitors and other users, as long as use does not impair specific park resources or overall visitor experience. The appropriateness of any particular visitor use or recreational experience is resource-based and will vary from park to park; therefore, a use or activity that is appropriate in one park area may not be appropriate in another. The superintendent is directed to analyze overall park use and determine if any particular use is appropriate. Where conflict arises between use and resource protection, where the superintendent has a reasonable basis to believe a resource is or would become impaired, then that superintendent is obliged to place limitations on public use.

3. Consistency of This Compendium with Applicable Federal Law and Requirements

The superintendent’s compendium is not considered a significant rule requiring review by the Office of Management and Budget under Executive Order 12866. In addition, this compendium will not have a significant economic effect on a

number of small entities nor impose a significant cost on any local, state or tribal government or private organization, and therefore does not fall under the requirements of either the Regulatory Flexibility Act or the Unfunded Mandates Reform Act.

The actions and requirements described in this compendium are found to be categorically excluded from further compliance with the procedural requirements of the National Environmental Policy Act (NEPA) in Department of the Interior (DOI) Guidelines 516 DM 6 and as such, an Environmental Assessment will not be prepared.

4. Development of the Requirements of the Superintendent's Compendium

As outlined above, the NPS has broad authority and responsibility to determine what types of uses and activities are appropriate in any particular National Park System area. The requirements of the superintendent's compendium are developed through an analysis and determination process. The decision criteria used during this process are:

- Is there use or activity consistent with the NPS Organic Act and NPS policy?
- Is the use or activity consistent and compatible with the park's enabling legislation, management objectives, and corresponding management plans?
- Will the use or activity damage the park's protected natural and cultural resources and other protected values?
- Will the use or activity disturb or conflict with wildlife, vegetation, and environmental protection actions and values?
- Will the use or activity conflict with or be incompatible with traditional park uses and activities?
- Will the use or activity compromise employee or public safety?

5. Applicability of the Compendium

The rules contained in this compendium apply to all persons entering, using, visiting or otherwise present on federally owned lands, including submerged lands, and waters administered by the NPS within the legislative boundaries of the park. This includes all waters subject to the jurisdiction of the United States, including all navigable waters.

6. Enforcement of Compendium Requirements

NPS law enforcement park rangers enforce the requirements of the United State Code, 36 CFR, and this superintendent's compendium.

7. Penalties for Not Adhering to the Compendium Requirements

A person who violates any provision of the regulations found in 36 CFR, Parts 1-7, or provisions of this compendium, is subject to a fine as provided by law (18 U.S.C. 3571) up to \$5,000 for individuals and \$10,000 for organizations, or by imprisonment not exceeding six months (18 U.S.C. 3559), or both, and shall be adjudged to pay all court costs associated with any court proceedings. You may receive a list of fines associated with any particular provision by contacting the chief ranger at the park address found below.

8. Comments on the Compendium

The compendium is reviewed annually and revised as necessary. The park welcomes comments about its program and activities at any time.

9. Effective Date of the Superintendent's Compendium

The Superintendent's Compendium is effective on the approval date listed on the first page of this document and remains in effect until revised for a period up to one year.

10. Additional Information

Some of the terms used in this compendium may have specific meaning defined in 36 CFR 1.4 *Definitions*.

11. Availability

Copies of the compendium are available at Park Headquarters, 1978 River Road, Bushkill, PA. It may also be found at nps.gov/dewa.

B. SUPERINTENDENT'S COMPENDIUM

In accordance with regulations and the delegated authority provided in Title 36, Code of Federal Regulations ("36 CFR"), Chapter 1, Parts 1-7, authorized by Title 16 United States Code, Section 3, the following provisions apply to all lands and waters administered by the National Park Service, within the boundaries of Delaware Water Gap National Recreation Area. Unless otherwise stated, these regulatory provisions apply in addition to the requirements contained in 36 CFR, Chapter 1, Parts 1-7.

Written determinations, which explain the reasoning behind the superintendent's use of discretionary authority, as required by Section 1.5(c), appear in this document identified by italicized print.

I. 36 CFR §1.5 – VISITING HOURS, PUBLIC USE LIMITS, CLOSURES, AND AREA DESIGNATIONS FOR SPECIFIC USE OR ACTIVITIES

(a)(1) The following visiting hours and public use limits are established for all or for the listed portions of the park, and the following closures are established for all or a portion of the park to all public use or to a certain use or activity:

Visiting Hours:

- Except individuals engaged in activities associated with the authorized overnight trips on the Appalachian Trail or the Delaware River as described under Section 2.10(a) in this compendium or individuals engaged in hunting or fishing activities in accordance with federal and state laws the following areas are closed to visitation from Sunset to Sunrise:
 - Blue Mountain Lakes recreation site
 - Bushkill Access
 - Buttermilk Falls parking lot
 - Caddoo Access
 - Chudzik area
 - Coppermine Trail parking lot
 - Crater Lake area and parking lot
 - Dingmans Access
 - Dingmans Falls area and trail (Closed summer 2025-early summer 2026 for bridge construction.)
 - Doodle Hollow Road
 - Eshback Access
 - Fairview parking lot
 - Hackers Falls and parking lot
 - Hialeah Picnic Area
 - Hidden Lake recreation site and parking lot
 - Jerry Lee's Access
 - Johnny Bee Road (Upper Road off Mary Stuart Road)
 - Karamac area (parking lot is closed)
 - Kittatinny Point area
 - Lake Lenape parking lot
 - McDade Trail parking areas, unless recreating on the McDade Trail
 - Metz Icehouse area and river access
 - Mott Street Bridge area
 - Namanock recreation site
 - National Park Drive parking lots
 - Phillips Lane area
 - Poxono Access
 - Raymondskill Falls recreation site and parking lots
 - Roberts Lane area
 - Route 209 parking areas and pullouts
 - Skyline Drive and upper Blue Mountain Lakes Road
 - Slateford Farm area, access road, and parking lots
 - Slateford Gorge

- Sproul Road
 - State Route 611 overlooks and parking lots
 - State Route 739 pullouts
 - Stuckeys Pond
 - Toms Creek recreation site and parking lots
 - Van Campens Glen recreation site and parking lots
 - Venturo Access
- Milford Beach, Turtle Beach, and Smithfield Beach are closed 8 PM to 6 AM.
 - Dingmans Falls access roads and the visitor center parking area are open to vehicles from 8 am to dusk daily from April 15 to January 2 or the first significant snowfall, whichever is earliest. (Site and visitor center closed summer of 2025-early summer of 2026 for bridge construction)
 - Hours of operation for park headquarters and visitor centers vary by season. Consult the park website for current hours of operation.

Closures:

- The following areas are closed to the public:
 - Myers Bridge (Wulster-Meyers Truss Bridge)
 - Waterfalls, adjacent cliffs, and water within 50 feet upstream of waterfalls (except for individuals engaged in ice climbing)
 - Sky's Edge Range (National Park Service Law Enforcement Training Site)
 - Adams Creek:
 - Drainage, from U.S. Route 209 upstream to and including the Sproul Road and Long Meadow Road parking areas from May 1 through September 30
 - Between Millbrook Village and the Susquehanna-Roseland transmission line right-of-way; and within 200' on either side of Van Campens Brook, and Van Campens Brook itself, from the south end of Millbrook Village (Garis House) to the Upper Glen trailhead.
 - White Pines McDade Trail parking-closed May 1 through September 30
 - Due to bridge construction on the access road, Dingmans Falls including the access roads, visitor center and trail system, is closed for summer of 2025-early summer of 2026.
 - Due to structural damage by a commercial vehicle, Old Sussex County Bridge, Main Street over the Flatbrook, Walpack, NJ, until further notice.

The superintendent has determined that this closure is necessary to maintain public safety; protect environmental and scenic values; protect natural and cultural resources; and avoid public use conflicts.

- The following areas are closed to the possession or consumption of alcoholic beverages:

- Adams Creek
- Ames Jennings
- Blue Mountain Lakes recreation site
- Bushkill Store Picnic Area
- Caddoo recreation site
- Coppermine parking area and river access
- Crater Lake area
- Dingmans Falls recreation site (closed for bridge construction)
- Eshback Access (unless on river trip)
- George W. Childs Park
- Hackers Falls
- Hialeah Picnic Area and Hialeah Island
- Hidden Lake
- Indian Ladders / Hornbecks Creek
- Jerry Lees Access
- Karamac area
- Kittatinny Point grounds
- McDade Trail: River View trailhead and Turn Farm trailhead
- Milford Beach
- Millbrook Village
- Namanock recreation area
- NPS lands adjacent to Freeman Tract Road, between the road and the Delaware River, except designated river campsites
- Raymondskill Falls recreation site and creek from the park boundary to confluence of the Delaware River
- Rivers Bend group campsite
- Sawkill Creek from park boundary to confluence with the Delaware River (including the Mott Street Bridge and pool below the bridge)
- Slateford Gorge
- Smithfield Beach
- Toms Creek Picnic area
- Tumbling Waters Trail
- Turtle Beach
- Valley View group campsite
- Van Campens Glen, that portion lying along Van Campen Brook between the “Cut-Off-Road” and the Old Mine Road, including areas along trails and upper and lower parking lots
- Venturo Access

The superintendent has determined that these closures are necessary to maintain public health and safety; protect environmental and scenic values; protect natural and cultural resources; avoid conflicts among visitor use activities. Possession and consumption of alcoholic beverages in these areas has been associated with injuries and death; degradation of environmental and scenic values by trash being left at locations by the public; impacts on natural and cultural resources by trash becoming attractant for wildlife and subjects damaging natural and cultural resources;

possession and use of alcoholic beverages at these locations has also led to user conflicts between groups using areas as “party sites” and other users wishing to recreate at these sites.

- Dingmans Campground, which includes in addition to the campsites, the parcel of land and riverbank assigned to the use of the concessionaire, is closed to the consumption or possession of alcoholic beverages except the possession of alcoholic beverages will be permitted in the campground under the following circumstances:
 - when stored in the trunk of motor vehicle or, if a motor vehicle is not equipped with a trunk, stored in some other portion of the motor vehicle designed for the storage of luggage and not normally occupied by or readily accessible to the operator or passengers; or
 - when stored in the living quarters of a motor home or camper.

The superintendent has determined that this closure is necessary to maintain public health and safety; protect natural resources; and avoid conflicts among user groups. The Dingmans Campground is the only developed campground in the recreation area administered under a concession agreement with the National Park Service. This closure is in alignment with regulations in state-owned campgrounds within the recreation area and surrounding area.

- Possession or use of glass containers is prohibited at the following areas:
 - Delaware River
 - Adams Creek
 - Ames Jennings
 - Blue Mountain Lakes recreation site
 - Coppermine parking area and river access
 - Caddoo recreation site
 - Crater Lake area
 - Eshback Access
 - George W. Childs Park
 - Hackers Falls
 - Hialeah Picnic Area and Hialeah Island
 - Jerry Lees Access
 - Hornbecks Creek
 - Karamac area
 - Kittatinny Point area including picnic area and shoreline
 - Milford Beach
 - Raymondskill recreation site and creek from the park boundary to the confluence with the Delaware River
 - Sawkill Creek from park boundary to confluence with the Delaware River (including the Mott Street Bridge and pool below the bridge)
 - Smithfield Beach
 - Tumbling Waters
 - Turtle Beach

- Van Campen Glen
- Venturo Access

The superintendent has determined glass containers are prohibited on the Delaware River or any creeks, streams, lakes, or ponds where one may swim in the park. A public safety hazard exists when visitors possess glass containers on the river and these other areas. The waterways of the park are used by swimmers and boaters who are usually barefooted and broken glass on the river bottom and on the riverbanks has caused numerous injuries over the years.

- The following areas are closed to picnicking and food consumption:
 - Karamac trail and riverbank
 - Point of Gap overlook parking area and riverbank
 - Raymondskill Creek, trails, and parking areas, from the park boundary to the confluence of the Delaware River, including Hackers Falls and trail
 - Riverview trailhead parking area for the McDade Recreational Trail
 - Van Campens Glen
 - George W. Childs Park
 - Watergate Recreation Site
 - Sawkill Creek from park boundary to confluence with the Delaware River (including the Mott Street Bridge and pool below the bridge)

The superintendent has determined that these conditions are necessary to maintain public health and safety; protect the environmental and scenic values; protect natural and cultural resources; and avoid user conflicts. In the past large groups have utilized areas of the park for picnicking, cooking, and preparing food and these areas were never intended for this type of activity (e.g. primitive river access; undeveloped creek and stream sides; waterfall areas; hiking trails/areas; small lakes and ponds). These areas were designed for recreational activities such as hiking, fishing, hunting, and non-motorized boating (car top) boating. The areas were designed for the public to utilize for short periods of time (e.g., the amount of time it takes to hike the trail and view the waterfall) not for the public arrive early in the day and remain all day eating, cooking, and preparing one or more large meals. Most do not have restrooms or if they do, they are insufficient to service the needs of large groups over extended periods of time. Most of these areas do not have trash collection and other infrastructure such as parking, picnic tables, grills, or fire rings or if they do, there are insufficient numbers to support large groups. The result is that large groups occupy and dominate areas limiting access to the same area for other public users creating conflict among user groups. The large groups generate substantial amounts of garbage and human waste due to the time spent at a location. This leads to habituation and wildlife / human conflicts, especially with black bears whose primary habitat includes many of these areas. Large groups have also constructed their own infrastructure at these locations such as trails and water access; cut down trees;

trampled vegetation and built their own pits damaging natural and cultural resources.

- No hunting is allowed in areas designated as safety zones; on established / designated public roads and parking areas; or developed areas and/or trails listed below:
 - Bushkill Access
 - Chado Farm area
 - George W. Childs Park
 - Cliff Park Inn, grounds, and golf course
 - Dingmans Falls area, from the upper observation platform to the east edge of the parking area and 450 feet either side of Dingmans Creek
 - Dingmans Campground area, including the Delaware River and shoreline of the river adjacent to the campground (Pennsylvania shoreline) and across from the campground (New Jersey shoreline)
 - Dingmans Access
 - Dingmans Maintenance area and Ranger Station area
 - Dutch Reformed Church of Minisink
 - Eshback Access
 - Hialeah Picnic Area
 - Hidden Lake recreation site
 - Camp Ken-Etiwa-Pec
 - Kittatinny Point grounds and along the Delaware River 450 feet upriver from the western end of the parking lot and 450 downriver of the East end of the Picnic Area
 - Milford Beach
 - Millbrook Village area
 - Mohican Outdoor Center
 - Peters Valley School of Craft area
 - Pocono Environmental Education Center
 - Raymondskill Falls recreation site
 - Rivers Bend group campsite
 - Smithfield Beach
 - Toms Creek Picnic Area
 - Unharvested agricultural crop fields
 - Valley View group campsite
 - Van Campen Inn
 - Walpack Center area
 - Watergate Recreation Site
 - Weygadt maintenance facility and parking area
 - Turtle Beach

The superintendent has determined that these closures are necessary for public safety and to avoid public use conflicts. These areas routinely visited by members of the public who camp, hike, picnic, launch boats, park cars, attend programs, or are involved in the agricultural lease program.

- Fishing is prohibited in the following areas:
 - Dingmans Creek, within George W. Childs Park including foot bridges and observation platforms
 - Dingmans Creek, from 100 feet upstream of the top observation platform to the eastern end of the Dingmans Falls Visitor Center parking lot; (site and visitor center closed summer of 2025-early summer of 2026 for bridge construction)
 - From all designated boat launch and retrieval sites; and
 - Within designated swimming areas

The superintendent has determined that these closures are necessary to protect scenic values and avoid public use conflicts in areas of and at times of heavy visitor use.

- No climbing, rappelling, diving, jumping, high lines, slack lines, tight ropes, or other line type crossing devices are allowed in the following areas:
 - Waterfalls and waterfall pools, except ice climbing
 - Karamac bridge abutments
 - Silver Thread Falls along the Dingmans Falls Trail is closed to all climbing, rappelling, diving, or jumping including ice climbing for resource protection.

The superintendent has determined that these closures are necessary for public health and safety; to protect environmental and scenic values; to protect natural and cultural resources; and reduce public use conflicts. Waterfalls and waterfall pools have been the scene of numerous injuries and deaths as a direct or indirect result of climbing, rappelling, diving, or jumping at these locations. The climbing and rappelling in these areas has an impact on environmental and scenic values by creating erosion and scarring as well as impacting natural and cultural resources through damage of plants and structures. Often trash is left behind as are ropes and rope swings creating additional impacts and increasing the public safety risk. Silver Thread Falls is closed to ice climbing due to impact on threatened plants identified as growing in this area.

- The superintendent may issue temporary closures for wildlife breeding.

The superintendent may as necessary close areas of the park to the public to facilitate a successful breeding season of wildlife that is endangered or for other species that require special conditions for successful breeding. Closures may be in effect for the duration of the breeding season or may be dependent upon varying conditions such as weather. Closures may include roads, trails, or areas used for recreation purposes. The public will be notified of these closures in accordance with 36 CFR 1.7

- Park caves and mine shafts are closed to public access.

The superintendent has determined that this closure is necessary for the protection of natural resources. The closure has been implemented to protect bat populations from white nose syndrome, which may be spread on human clothing and by human activity, which may increase the susceptibility and mortality in bats.

- The following areas are closed to swimming and wading:
 - Adams Creek (except while fishing, closed May 1-September 30 annually)
 - Toms Creek (except while fishing)
 - Big Flat Brook Creek from the intersection of Route 615 and Three Bridges Road (Blewitt Tract) to the Delaware River (except while fishing)
 - Van Campen Brook (except while fishing)
 - All waterfall areas within 50 feet upstream of the top of any waterfall
 - Dingmans Creek from 100 feet upstream of the top of Dingmans Falls to the end of the Dingmans Falls Visitor Center parking lot, including the pool at the base of Silverthread Falls. (Site closed summer of 2025-early summer of 2026 for bridge construction)
 - George W. Childs Park
 - Raymondskill Creek, within the Raymondskill Falls recreation site, from 50 feet upstream of top of the upper falls to the Route 209 bridge
 - Delaware River when conditions are determined to be unsafe
 - Karamac area/shoreline of the Delaware River
 - Kittatinny Point area in the Delaware River
 - Within 50 feet of a designated vessel launch and retrieval site

The superintendent has determined that these closures are necessary for health and public safety; the protection of environmental and scenic values; protection of natural resources; and to avoid public use conflicts. These areas are all highly visited, attracting large numbers of people during the summer months. The waterfall pools and streams can become easily overloaded and the subsequent off-trail travel in these areas damages fragile natural resources and results in erosion of topsoil in areas with limited topsoil. Many of these areas lie within hemlock ravines. Hemlock trees are a shallow-rooted tree and as such particularly susceptible to damage due to erosion. Many of these areas are stocked or are wild trout streams, and the fisheries are susceptible to damage from human activity. Many of these areas do not have sanitation facilities to manage human waste that is generated by the large number of people who would be attracted to swim in these areas. These areas have also been over the years locations where injuries and fatalities have occurred directly related to swimming at these locations or swimming under certain conditions.

- The Delaware River is closed to all public use when the river reaches 15 feet or higher as measured on the Montague River Gauge

The superintendent has determined that these closures are necessary for public health and safety. When the Delaware River reaches a height of 15 feet or above islands and shoreline vegetation become submerged or partially submerged creating strainers that can catch vessels and people entrapping them. River currents increase and

become unpredictable and turbidity due to run off reduces visibility in the river to zero. Debris is swept into the river from adjacent lands as they become flooded, creating hazards to navigation and increases in e. coli and other potential hazards to public health from agricultural and other surface runoff. Swift water rescue operations in these conditions become extremely dangerous for emergency responders.

- All roadways, trails, and other two-track access conveyances, regardless of former use, that are gated and/or marked “No Motor Vehicles” or “Authorized and Emergency Vehicles Only” within the park are closed to the operation of all motor vehicles, except for emergency and administrative use.

The superintendent has determined closure of certain roads, trails, and two-track access roads in the park is necessary for protection of park agricultural lease fields, archeological and cultural sites, riparian areas, wildlife habitat, public safety, and the general protection of the river and its associated banks and access areas. The regular availability and popularity of four-wheel drive vehicles and the activities of their users have created a similar environment to that of ATV users which have damaged resources and allowed entry into areas not normally available to prudent users of a roadway in the park. Many of these roadways or conveyances are in remote areas.

- All roads, lands and waters within the park are closed to the operation of all-terrain 3- and 4- wheel cycles, off road utility vehicles (UTV) and similar vehicles intended only for off road use, except for emergency and administrative use.

The superintendent has determined this closure is necessary because all-terrain type vehicles pose a risk to public safety; damage park natural and cultural resources as well as infrastructure; and create public use conflicts. No routes within the park are designated for off-road motor vehicle use. Past activities of ATV users within the park have damaged natural and cultural resources and infrastructure.

(a)(2) The following areas have been designated for a specific use or activity, under the conditions and/or restrictions as noted:

- Swim Beaches:
 - Milford Beach
 - Smithfield Beach
 - Turtle Beach
 - The use of floatation devices, glass containers, kites, and incompatible sporting activities, including fishing, is prohibited in the designated swimming areas and on the sand and gravel of designated beaches. The use of US Coast Guard approved personal floatation devices (PFD/life jacket) is permitted and encouraged within the designated swimming areas.
 - Children under the age of 10 must be accompanied by an adult while

within the swim area.

- Designated Camping Areas:
 - Please refer to §2.10 of this document for detailed camping area designations.
- Designated Boat Launching Sites:
 - Please refer to §3.8 of this document for detailed vessel operation conditions.
- Designated Picnic Areas:
 - Please refer to §2.11 of this document for detailed picnic area designations.

The following restrictions and/or conditions are in effect for the specific uses or activities noted:

- Filming, still photography and audio recording:
 - May require a permit, consistent with 54 U.S.C. 100905.
 - Filming, still photography and audio recording activity that occurs in closed areas, requires exclusive use of a site or area or involves a set or staging equipment other than handheld equipment (such as a tripod, monopod and handheld lighting equipment) requires a permit, unless the activity is affiliated with an activity or event that has been allowed under a written authorization, such as a special use permit.
 - Filming, still photography and audio recording that involves more than eight individuals requires a permit, unless the NPS has specifically notified an individual or group that a permit is not required, or if the activity is affiliated with an activity or event that has been allowed under a written authorization, such as a special use permit.
 - If a permit is required for the reasons stated above, or if the NPS otherwise determines and then notifies an individual or group that a permit is required for a filming, still photography or audio recording activity, then engaging in that activity without a permit is prohibited. Violating a term or condition of a permit issued by the NPS for a filming, still photography, or audio recording activity is prohibited, and may result in the suspension or revocation of the permit, in addition to any penalties that may apply under 36 CFR 1.3.

Federal law at 54 U.S.C. 100905 states that permits and fees are not required for filming, still photography or audio recording in park areas if certain requirements are met. These requirements address various topics, including, but not limited to, group size, location, equipment, potential impacts to resources and visitors and the likelihood that the NPS will incur related administrative costs. If any of these

requirements are not met, the law allows the Secretary of the Interior, acting through the NPS, to require a permit for the subject activity. Permit requirements are imposed by the superintendent under discretionary authority provided by 36 CFR 1.5(a)(2), which allows the superintendent to impose conditions or restrictions on a use or activity, consistent with applicable legislation, to implement management responsibilities. The general regulations for permits in 36 CFR 1.6 do not apply to permits issued for filming, still photography and audio recording, which instead are governed by the statutory provisions in 54 U.S.C. 100905. The imposition of permit requirements, on a case-by-case basis, for filming, still photography or audio recording does not require rulemaking under 36 CFR 1.5(b). Requiring a permit with reasonable terms and conditions in accordance with statutory requirements at 54 U.S.C. 100905 is not highly controversial, will not result in a significant alteration in the public use pattern of the System unit, will not adversely affect the System unit's natural, aesthetic, scenic or cultural values or require a long-term or significant modification in the resource management objectives of the System unit, because the permit requirement is limited in time and scope to the specific activities authorized by the permit, which contain terms and conditions that protect the values, resources, and visitors of the system unit, and implements federal law.

- Launching, landing, or operating an uncrewed or remotely piloted aircraft from or on lands and waters administered by the National Park Service within the boundaries of Delaware water Gap National Recreation Area is prohibited except as approved in writing by the superintendent.

This restriction is necessary to prevent unacceptable impacts to park resources and values from the use of uncrewed aircraft. Potential impacts include harming visitors, interfering with rescue operations, causing excessive noise, impacting viewsheds, and disturbing wildlife. This restriction is required by NPS Reference Manual #60: Aviation Management, Chapter 12 – Uncrewed Aircraft Systems

- Hunting from a tree stand:
 - Which has been affixed to a tree by nails, spikes, lag-bolts, screws, or similar devices is prohibited.
 - Where access to the tree or tree stand is supported by any device which penetrates the tree is prohibited.
 - Portable tree stands must be removed each day.

The superintendent has put these restrictions in place to protect natural resources and to avoid public use conflicts. Tree stands that use nails, spikes, lag bolts, screws or other devices or are required to gain access to or support the stand damage trees and weaken the trees resistance to disease and insect infestation. To ensure equal hunting opportunities to all tree stands must be removed each day.

- Use of bait while hunting:
 - Distribution and/or placing of bait is prohibited.
 - Hunting with, over, or through bait, as an attractant to wildlife is prohibited.

Definition: Bait includes any natural or artificial bait, hay, nuts, salts, grains, fruits, food, food scraps, or parts thereof, and any chemical or mineral used as an enticement to wildlife. Scents and lures that are used for hunting are not interpreted as bait. The use of scents or lures while hunting Black Bear in Pennsylvania is prohibited.

The superintendent has determined that these restrictions are necessary for the protection of natural resources and to avoid public use conflicts. Bait can attract and habituate non-target species and interfere with equal hunting opportunities for the public.

- Tapping any species of trees for collection of sap or other purposes is prohibited.

The superintendent has determined that this restriction is necessary for the protection of natural resources. Tapping of trees of any species leaves them susceptible to disease and insect infestation.

- Use of vessels propelled by internal combustion engine is prohibited except on the Delaware River.

The superintendent has determined that this restriction is necessary for the protection of environmental and scenic values; protection of natural resources; and to reduce public use conflicts. Bodies of water in the park other than the Delaware River are not conducive to the use of internal combustion engines due to their small size and the impact on other users of these areas. The risk of fuel spills on these small bodies of waters and the impact on environmental values and natural resources is greater than on larger bodies of water.

- The following restrictions are imposed relative to the use of vessels on the Delaware River:
 - Within Smithfield Beach, Turtle Beach, and Milford Beach areas
 - Operating a vessel within the designated swimming area, as delineated by regulatory buoys, is prohibited.
 - Operating in excess of flat wake while within 500 feet upriver or downriver of the designated swimming area, as delineated by regulatory buoys is prohibited.

The superintendent has determined that this restriction is necessary for the public safety of designated swimming area users.

- Parking of vehicles:

- Parking of vehicles is permitted within designated parking areas while vehicle occupants are participating in recognized recreational activities during established visiting hours.
- Parking outside of designated parking areas or established visiting hours is prohibited except for:
 - Vehicles of occupants who are participating in recognized recreation activities within the park, and whose vehicles are parked safely off the roadway surface in locations immediately adjacent to established roadways; in locations where exiting and entering traffic flow is not affected; where the parked vehicle does not create or maintain a hazardous condition, limit travel on the roadway or damage park resources.
 - Designated parking areas are identified in Appendix A of this compendium.

The superintendent has determined that these restrictions are necessary to protect cultural and natural resources as well as reduce public use conflicts while promoting and facilitating the widest variety of public recreational opportunities. Traditionally, the Park has permitted hunters and anglers to park outside of designated parking areas and visiting hours to facilitate access to and promote hunting and angling as long as resource damage from such parking is minimized.

- Operation of motor vehicles within Rivers Bend or Valley View Group Campsites is prohibited except for vehicles associated with permitted campground use.

The superintendent has determined that this restriction is necessary for the public safety of the group campsite permit holders and to reduce public use conflicts. Rivers Bend and Valley View Group Campsites are located along the Delaware access to the river was designed for the group campsite permit holders and not for the general public.

- Winter use activities at Cliff Park Inn and Golf Course:
 - Snowboarding, sledding and any similar snow sliding activities on the golf course and lawns adjacent to the Cliff Park Inn and associated outbuildings are permitted only at the discretion of the lessee.
 - Cross Country Skiing and Snowshoeing are permitted only at the discretion of the lessee.

The superintendent has determined that this restriction is necessary for the protection of natural resources as well as infrastructure of the lessee. Permitting winter use activities at Cliff Park Inn and Golf Course may be permissible under some weather and snow conditions but may cause damage to natural resources and infrastructure under other conditions. The lessee has been granted the authority to determine which winter use activities are appropriate and under what conditions.

- The construction and/or use of rope swings or similar swing devices is prohibited in the park.

The superintendent has determined that this restriction is necessary for public safety and protection of natural resources. In the past members of the public have been injured using rope swings that they themselves put up or were put up by others. Often the rope swings are made of various kinds of rope that were not designed to withstand the forces placed upon them. Rope swings left by the public are subject to degradation from environmental factors and may or may not be placed in such a way or at such a location as to allow the user to safely clear obstacles or reach sufficient water depths. The placement of rope swings often necessitates the construction of trails up steep river or stream banks resulting in erosion of the bank and the cutting of limbs from trees. The rope itself will damage the tree's outer layer of bark making it susceptible to diseases and insect infestation weakening the tree and further making it a hazard.

- Bicycles and electric bicycles are prohibited on all trails except the McDade Recreational Trail.

The superintendent has determined that this restriction is necessary to protect natural resources and reduce public use conflicts. Currently, the park has restricted trail use to hiking, except for the McDade Trail which is open to bicycles and the Conashaugh Equestrian Trail which is open to horses.

- Cooking and Food Preparation:
 - People wishing to use ground fires, grills, stoves, lanterns, or other food heating devices for the heating or cooking of food may only use these devices in designated picnic areas, campgrounds, river campsites, or along the Appalachian Trail.
 - Ground fires are not permitted in picnic areas.
 - Ground fires are not permitted along the Appalachian Trail.
 - See Section 2.10(a) of this compendium for further details.

The superintendent has determined that these conditions are necessary to maintain public health and safety; protect the environmental and scenic values; protect natural and cultural resources; and avoid user conflicts. In the past large groups have utilized areas of the park for picnicking, cooking, and preparing food and these areas were never intended for this type of activity (e.g. primitive river access; undeveloped creek and stream sides; waterfall areas; hiking trails/areas; small lakes and ponds). These areas were designed for recreational activities such as hiking, fishing, hunting, and non-motorized boating (car top) boating. The areas were designed for the public to utilize for short periods of time (e.g., the amount of time it takes to hike the trail and view the waterfall) not for the public arrive early in the day and remain all day eating, cooking, and preparing one or more large meals. Most do not have restrooms

or if they do, they are insufficient to service the needs of large groups over extended periods of time. Most of these areas do not have trash collection and other infrastructure such as parking, picnic tables, grills, or fire rings or if they do, there are insufficient numbers to support large groups. The result is that large groups occupy and dominate areas limiting access to the same area for other public users creating conflict among user groups. The large groups generate substantial amounts of garbage and human waste due to the time spent at a location. This leads to habituation and wildlife / human conflicts, especially with black bears whose primary habitat includes many of these areas. Large groups have also constructed their own infrastructure at these locations such as trails and water access; cut down trees; trampled vegetation and built their own pits damaging natural and cultural resources.

- **Mandatory Wear of Life Jackets on the Delaware River:**
 - Life jackets are mandatory during the period of high water, 8 feet or above, measured at the Montague River Gauge, for each individual onboard a vessel which is underway, on, or in the waters of the Delaware River, within the park.
 - Type I, II, III, or V United States Coast Guard Approved Personal Floatation Devices (PFD) must be worn during the above river conditions.
 - PFD must be the proper size for the individual wearing it and it must be in good serviceable condition.

The superintendent has determined that this restriction is necessary to maintain public safety. When the Delaware River reaches a height of 8 feet or above small islands and shoreline vegetation become submerged or partially submerged creating strainers that can catch vessels and people entrapping them. River currents increase and become unpredictable and turbidity due to run off reduces visibility in the river to zero. These conditions increase the chances that boaters may lose control of their vessel resulting in their passengers and themselves entering the water unexpectedly. These conditions also increase the chances of anglers or others, who are fishing from or the near the shoreline of the Delaware River being unexpectedly swept into the river. Debris is swept into the river from adjacent lands as they become flooded creating hazards to navigation. Swiftwater rescue operations in these conditions become more difficult for emergency responders. Mandatory wear of life jackets on the river under these conditions increase the chance of survival of people who enter the water unexpectedly in these conditions.

CCTV Policy Statement

In accordance with National Park Service Law Enforcement Reference Manual 9 (RM-9), notice is hereby given that Delaware Water Gap National Recreation Area uses Closed Circuit Television (CCTV) security camera monitoring.

The park's use of Closed Circuit Television (CCTV) for law enforcement and security purposes will only be to visually monitor public park areas and public activities where no constitutionally protected reasonable expectation of privacy exists. Such CCTV use – which will have adequate privacy and First Amendment safeguards – will be to help ensure public safety and security; facilitate the detection, investigation, prevention, and deterrence of terrorist attack and crime; help ensure the safety of citizens and officers; help assist in the proper allocation and deployment of law enforcement and public safety resources; and help facilitate the protection of the innocent and the apprehension and prosecution of criminals. (RM-9, 26.1)

This policy does not restrict the official use of CCTV in government administrative areas, including administrative buildings, jail holding facilities (RM-9, 26.3.7), revenue collection sites, etc., where the government may record/monitor its facilities. For example, the government may perform unrestricted video/audio recording at revenue collection points (entrance stations, visitor center counters, etc.). This policy does not restrict the use of an Audio/Visual Recording Device (AVRD) in patrol vehicles or officer-worn recording devices used by commissioned rangers. (RM-9, 26.1).

Operation of CCTV cameras, maintenance of recorded images and use of recorded images will be in accordance with NPS and Department policy and applicable laws and regulations. (RM-9, 26.1-26.4) No person will be targeted or monitored merely because of race, religion, gender, sex, disability, national origin, or political affiliation or views. (RM-9, 26.4.2)

Nothing in this policy statement is intended to create any rights, privileges, or benefits not otherwise recognized by law.

II. 36 CFR §1.6 – ACTIVITIES THAT REQUIRE A PERMIT

The following is a compilation of those activities for which a permit from the superintendent is required:

- §2.5(a) Specimen collection (Take plant, fish, wildlife, rocks or minerals):
 - Except in accordance regulations of this chapter, 36 CFR Part 2, and 36 CFR 7.71(g)
- §2.10 Group camping
- §2.11 Group picnic pavilion site at Milford Beach (unavailable weekends from Memorial Day to Labor Day)
- §2.12(a)(4) Operation of a public address system
- §2.17(c)(1) Aircraft and air delivery

- A permit is required to remove downed aircraft.
- §2.37 Soliciting or demanding gifts, money goods or services (Pursuant to the terms and conditions of a permit issued under §2.50, §2. 51 or §2. 52)
- §2.38(a) & (b) Explosives
 - Use, possess, store, transport explosives, blasting agents
 - Use or possess fireworks
- §2.50(a) Conduct a sports event, pageant, public spectator attraction, entertainment, ceremony, and similar events
- §2.52(c) Sale or distribution of printed matter that is not solely commercial advertising
- §2.60(b) Livestock use
- §2.61(a) Residing on federal lands
- §4.11(a) Load, weight, and size limits
 - Owners/operators of all vehicles that exceed load, weight, and/or size limits established by the respective state law, must obtain a permit prior to operation on any park road
- §5.1 Advertisements (display, posting, or distribution)
- §5.3 Engaging in or soliciting any business requires a permit, contract, or other written agreement with the United States, or must be pursuant to special regulation
- §5.6 Commercial Vehicles
 - General Prohibition: The use of government roads within park areas by commercial vehicles, when such use is in no way connected with the operation of the park area, is prohibited, except that in emergencies the superintendent may grant permission to use park roads.
 - operation of the park area, is prohibited, except that in emergencies the superintendent may grant permission to use park roads.
 - Use of commercial vehicles on U.S. Route 209 within park boundaries
 - Commercial vehicles allowed without a permit: Commercial vehicles are allowed on the following sections of U.S. Route 209 without a permit:

- Northbound and southbound between (1) the NPS boundary on U.S. Route 209 south of Bushkill and (2) the intersection of U.S. Route 209 and SR 2001 in Bushkill; and
- Northbound and southbound between (1) the U.S. Route 209/U.S. Route 206 intersection south of the borough of Milford and (2) the NPS boundary on U.S. Route 209 south of the borough of Milford.
- Commercial vehicles allowed with written authorization (permit) until September 30, 2026:
 - A commercial vehicle that has four (4) or fewer axles that is owned and operated by a business that is physically located in an adjacent municipality must obtain a permit from the superintendent to use U.S. Route 209:
 - Northbound and southbound between (1) the U.S. Route 209/SR 2001 intersection in Bushkill and (2) the U.S. Route 209/U.S. Route 206 intersection south of the borough of Milford.
 - A commercial vehicle that has four (4) or fewer axles and that is necessary to provide services to a business or person located in an adjacent municipality must obtain a permit from the superintendent to use U.S. Route 209:
 - Northbound and southbound between (1) the U.S. Route 209/SR 2001 intersection in Bushkill and (2) the U.S. Route 209/U.S. Route 206 intersection south of the borough of Milford.
 - Operating a commercial vehicle without a permit when a permit is required by paragraphs (a) and (b) of this subsection is prohibited. Violating a term or condition of a permit issued under paragraphs (a) and (b) of this subsection may result in the suspension or revocation of the permit.
 - Commercial vehicles are prohibited at Smithfield Beach, Milford, Beach, and Turtle Beach unless permitted through a Commercial Use Authorization or Special Park Use Permit.
 - Commercial vehicles with 5 or more axles are prohibited.

Definitions: The term “commercial vehicle” as used in this section includes, but is not limited to trucks, station wagons, pickups, passenger cars or other vehicles when used in transporting movable property for a fee or profit, either as a direct charge to another person, or otherwise, or used as an incident to providing services to another person, or used in connection with any business.

Commercial vehicles do not include local school buses, and fire, ambulance, and

other safety and emergency vehicles, or any vehicle when used solely for recreational purposes.

The term “adjacent municipalities” as used in this section means Delaware Township, Dingman Township, Lehman Township, Matamoras Borough, Middle Smithfield Township, Milford Borough, Milford Township, Smithfield Township and Westfall Township, in Pennsylvania.

§5.7 Construction of buildings, facilities, trails, roads, boat docks, path, structure, etc.

III. GENERAL REGULATIONS

36 CFR §2.1 – PRESERVATION OF NATURAL, CULTURAL AND ARCHEOLOGICAL RESOURCES

(a)(4) Using or possessing wood gathered from within the park area is prohibited, except that dead wood on the ground may be collected for use as fuel for campfires within the park in the following areas:

- Areas immediately adjacent to (within 300 yards of external boundaries) developed park campgrounds and park designated river campsites are open to the collection of dead wood on the ground for use as fuel in campfires within those campgrounds and campsites.
- Firewood from outside the park area may not be brought in for use, nor transported through the park or across state lines, except heat-treated firewood that is bundled and certified by the United States Department of Agricultural or a State Department of Agriculture.

(c)(1) The collection of all species of fungi is prohibited. However, fruits, berries, and nuts of the following kinds may be gathered by hand for personal use or consumption:

- Blackberries, raspberries, dewberries, blueberries, cherries, huckleberries, wild grapes, wild strawberries, and autumn olive berries
 - (c)(2)(i) One (1) gallon of each kind, per vehicle, per day
- Acorns, beechnuts, black walnuts, chestnuts, hazelnuts, hickory nuts, apples, crabapples, pears, quince
 - (c)(2)(i) One half (1/2) bushel of each kind, per vehicle per day

The superintendent has determined that hand-picking certain fruits, nuts and berries in limited quantities will not adversely impact park wildlife or other park resources and has no negative effects on the reproductive potential of the individual plant species.

36 CFR §2.2 - WILDLIFE PROTECTION

(e) The following areas are closed to the viewing of wildlife with the use of an

artificial light except in accordance with state hunting regulations while hunting for furbearer / predators:

- All federally owned lands within the boundaries of the park

NOTE: Night vision devices are not artificial lights. However, infrared lighting/beams are artificial lights and are prohibited under this section.

36 CFR §2.3 – FISHING

NOTE: Pursuant to 36 CFR §7.71(g), Sub-Sections (d)(1) and (d)(2) are applicable except:

- The taking of reptiles, amphibians, and/or other aquatic genera, not defined as fish is prohibited.
- The taking or attempted taking of any species by hand is prohibited.
- The use of crayfish, clams, mussels, reptiles, or amphibians as fish bait is prohibited, unless it is a commercially produced, preserved, and packaged product.

36 CFR §2.10 – CAMPING and FOOD STORAGE

(a) Camping is allowed in the following designated sites or areas and is subject to the following established conditions:

- Dingmans Campground (Concession-operated)
 - 14-day reservation limit and only 30 days per calendar year
- Rivers Bend group campsite (Permit required)
 - 14-day reservation limit and only 30 days per calendar year
- Venturo Tract (not open to the public, volunteer campsite, reservation required)
- Valley View group campsite (Permit required)
 - 14-day reservation limit and only 30 days per calendar year
- Along the Appalachian Trail, subject to the following conditions:
 - Camping is restricted to through hikers who are hiking a minimum of six miles per day with a maximum stay of two nights within the park.
 - Persons must camp a minimum of 50 feet and no more than 100 feet from the Appalachian Trail and may not camp:
 - Within six miles of the trailhead where they started their trip
 - Within 100 feet of any stream or water source
 - Within one-half mile of an established roadway
 - Within 200 feet of another camping party
 - Along the Appalachian Trail one half mile south of the Blue Mountain Lake Road North to the intersection of the Appalachian Trail and Buttermilk Falls Trail
 - Camping is limited to one night per campsite
 - Camping is limited to 10 persons per campsite

- Middle Delaware National Scenic and Recreational River primitive campsites: Along the Delaware River, including Alosa campsites, while on an authorized overnight camping trip (below), subject to the following conditions:
 - Reservations are required via www.recreation.gov.
 - Campsites are \$16 per site per night.
 - Camping is limited to 30 days per calendar year
 - Camping is permitted in designated sites only.
 - Sites are identified by a sign and a fire grate.
 - Camping is limited to one night per campsite.
 - Campers must vacate sites by 11:00 AM
 - Camping is limited to ten (10) persons per campsite.
 - Campsites are limited to five (5) tents per campsites.
 - Tents must be erected within 50 feet of the campsite fire grate.
 - Camping is limited to boaters on authorized overnight trips, defined below.

Definitions: Camping is defined as the use of park land for living accommodation activities such as sleeping, or making preparations to sleep (including the laying down of bedding or creating any shelter-like structure or covering for the purpose of sleeping), or storing personal belongings, or making any fire, or using any tent, or shelter, or other structure, or vehicle for sleeping, or doing any digging, or earth breaking, or carrying on cooking activities. The above listed activities constitute camping when it reasonably appears, in the light of all the circumstances that the participants conducting these activities are in fact using the areas as living accommodation regardless of the intent of the participants or the nature of any other activities in which they may also be engaging. This policy is not intended to prohibit eating and other traditional picnicking activities in areas designated for picnicking.

Authorized overnight camping trips on the Delaware River are defined as follows:

- *One night trip:*
 - *Milford Beach to Eshback Access and points south*
 - *Dingmans Access to Smithfield Beach and points south*
 - *Eshback Access to Smithfield Beach and points south*
 - *Bushkill Access to Kittatinny Point and points south*
- *Two night trips:*
 - *Milford Beach to Smithfield Beach and points south*
 - *Dingmans Access to Kittatinny Point and points south*
- *Three night trips:*
 - *Milford Beach to Kittatinny Point and points south*

(d) Conditions for the storage of food are in effect as designated below:

In any established campground or campsite within the park, food (including lawfully taken fish or wildlife), garbage, and equipment used for cooking or food storage must be stored in such a manner as to prevent wildlife from gaining access to it, except when food

is being prepared or consumed.

36 CFR §2.11 – PICNICKING

Certain areas have been closed to picnicking and are listed in section 1.5(a)(1) “Closures”.

- Preparing, and/or Cooking/Heating of any food and/or using a ground fire, grill, stove, lantern, or other food cooking / heating device is prohibited except:
 - Personally owned grills, stoves, or lanterns may be used within designated picnic areas, campgrounds, or river campsites:
 - Designated picnic areas (no ground fires):
 - Bushkill Store Picnic Area
 - Hialeah Picnic Area
 - Milford Beach
 - Namanock recreation site
 - Smithfield Beach
 - Toms Creek Picnic Area
 - Turtle Beach
 - Kittatinny Point Picnic Area
 - Designated Campgrounds:
 - Dingmans Campground (Concession-operated)
 - Rivers Bend group Campsite (Permit required)
 - Valley View group Campsite (Permit required)
 - Venturo Campsite (Not open to the public)
 - Designated Middle Delaware National Scenic and Recreational River primitive campsites, including the Alosa sites in accordance with Section 2.10(a) of this compendium
 - Appalachian Trail (no ground fires) in accordance with Section 2.10(a) of this compendium

The superintendent has determined that these conditions are necessary to maintain public health and safety; protect the environmental and scenic values; protect natural and cultural resources; and avoid user conflicts. In the past large groups have utilized areas of the park for picnicking, cooking, and preparing food and these areas were never intended for this type of activity (e.g. primitive river access; undeveloped creek and stream sides; waterfall areas; hiking trails/areas; small lakes and ponds). These areas were designed for recreational activities such as hiking, fishing, hunting, and non-motorized boating (car top) boating. The areas were designed for the public to utilize for short periods of time (e.g. the amount of time it takes to hike the trail and view the waterfall) not for the public arrive early in the day and remain all day eating, cooking, and preparing one or more large meals. Most do not have restrooms or if they do, they are insufficient to service the needs of large groups over extended periods of time. Most of these areas do not have trash collection and other infrastructure such as parking, picnic tables, grills, or fire rings or if they do, there are insufficient numbers to support

large groups. The result is that large groups occupy and dominate areas limiting access to the same area for other public users creating conflict among user groups. The large groups generate substantial amounts of garbage and human waste due to the time spent at a location. This leads to habituation and wildlife / human conflicts, especially with black bears whose primary habitat includes many of these areas. Large groups have also constructed their own infrastructure at these locations such as trails and water access; cut down trees; trampled vegetation and built their own pits damaging natural and cultural resources.

36 CFR 2.13 – FIRES

(a)(1) The lighting or maintaining of fires is generally prohibited, except as provided for in the following designated areas and/or receptacles, and under the conditions noted:

- Designated Areas:
 - Dingmans Campground (concession-operated), in designated fire rings
 - Rivers Bend Group Campsite, in designated fire rings
 - Valley View Group Campsites, in designated fire rings
 - Designated Middle Delaware National Scenic and Recreational River primitive campsites, including Alosa Campsites, in designated fire rings
- Conditions on Lighting or Maintaining Fires:
 - A fire may be ignited and maintained only by using fuel sources designed and commonly used for warmth or the preparation of food, such as charcoal briquettes or natural firewood. Lighting or maintaining a fire with other materials including, but not limited to, flammable liquids, garbage, fireworks, plastics, aerosol canisters, batteries, or other manufactured or synthetic materials, is prohibited.

This action is necessary for the maintenance of public health and safety, protection of environmental or scenic values, protection of natural or cultural resources and the implementation of management responsibilities. Materials other than approved combustibles – especially fire accelerants and substances prone to wind transport or explosion – create serious risks when used to light or maintain fires. These combustibles can ignite or spread wildfires that directly threaten people and valuable resources and assets. The burning of manufactured or synthetic materials can contribute to air pollution, contaminate soil and water, and be toxic to humans and the environment. Less restrictive measures, such as an education campaign, would not be commensurate with the substantial risks associated with those activities and could lead to adverse outcomes that might be prevented by establishing an enforceable condition

36 CFR §2.14 – SANITATION and REFUSE

(b) Conditions for the disposal, containerization, or carryout of human body waste have been established as follows:

- In designated receptacles or fixtures provided for that purpose
- Buried six (6) inches deep in the soil in a location that is at least 100 feet from any water source, campsite or trail; or
- Carried out and properly disposed of outside of the park

36 CFR §2.15 – PETS

(a)(1) Possessing pets in public buildings, public transportation vehicles, swimming beaches, and the following structures and/or areas is prohibited:

- George W. Childs Park
- Dingmans Falls Visitor Center and recreation site, including the boardwalk trail (visitor center and site closed summer of 2025-early summer of 2026 for bridge construction)
- Milford Beach
 - Closed to pets from the Saturday of Memorial Day weekend through Labor Day, except when launching and retrieving vessels at the designated launch sites or when accessing the McDade trailhead for the purpose of utilizing the trail
- Raymondskill Falls recreation site
- Rivers Bend group campsite (Permitted with valid camping permit)
- Smithfield Beach
 - Closed to pets from the Saturday of Memorial Day weekend through Labor Day, except when launching and retrieving vessels at the designated launch sites.
- Valley View group campsite (Permitted with valid camping permit)
- Turtle Beach

(b) The use of dogs in support of hunting must be in accordance with federal and state laws and the following conditions:

- Dog training is permitted year-round
- Dog training is permitted during daylight hours, except for when training on raccoons and opossum at which time trainers are authorized one (1) hour before sunrise and one (1) hour after sunset during the following dates:
 - March 1 through May 1 and September 1 through October 1
- Dogs are not permitted to be trained on fox
- Any dog being trained shall be accompanied by and under the control of the owner or handler.
- No dog shall be trained in or used in the pursuit of any non-game or large game species, including but not limited to bear, deer, turkey, and bobcat except as specifically permitted by state law
- No dog shall be permitted to kill or inflict injury upon any game or wildlife
- All dogs involved with training activities must be licensed in accordance with state law
- The release or use of any live animal or bird by individuals is prohibited

- Frozen or preserved game birds obtained in legal manner may be used for training purposes
- The training of dogs in areas closed to hunting is prohibited

36 CFR §2.16 – HORSES and PACK ANIMALS

(b) The use of horses or pack animals is prohibited outside of the following trails, routes or areas designated for their use:

- Conashaugh View Trail
- Upper Ridge Road between Jager Road and 560 and eastern park boundary between these points

36 CFR §2.17 – AIRCRAFT and AIR DELIVERY

(a)(1) Operating or using aircraft on lands or waters other than at designated locations is prohibited.

- There are currently no areas in the park designated for the use and operation of aircraft, air delivery, or powerless flight.

(c)(1) The removal of a downed aircraft, components, or parts thereof is subject to procedures established by the superintendent.

- Removal of downed aircraft requires a permit.

36 CFR §2.21 – SMOKING

(a) The following portions of the park, or all or portions of buildings, structures or facilities are closed to smoking as noted:

- Any park building, housing, government vehicle, or within 20 feet of any building entrance.

Smoking, including all tobacco products, electronic smoking devices (such as electronic cigarettes), handheld vaporizers and items covered by the Controlled Substances Act, Title II of the Comprehensive Drug Abuse Prevention and Control Act of 1970 (to include for medical use) is prohibited in all other areas and buildings to protect park resources and reduce the risk of fire.

Per-Policy Memorandum 15-03: Effective immediately, use of Electronic Nicotine Delivery System (ENDS) will be treated as tobacco smoking. All provisions of Director's Order #50D—including in particular sections 4.1.1 and 4.1.2—will apply to ENDS use. ENDS use will not be permitted within any Government-owned or -leased vehicle, including heavy equipment, watercraft, or aircraft.

36 CFR §2.22 – PROPERTY

(a)(2) Leaving property unattended for longer than 24 hours is prohibited, except in the following locations or under the following conditions:

- Vehicles may be left unattended for periods longer than 24 hours when:
 - The operator and occupants are engaged in an authorized backcountry or overnight river trip and the vehicles are parked in a designated parking area.

36 CFR §2.23 – RECREATION FEES

(b) Recreation fees, and/or a permit system, in accordance with 36 CFR part 71, are established for the use of the following specialized sites, facilities, equipment or services, or for participation in the following group activity, recreation events or specialized recreation uses:

There is no fee to enter Delaware Water Gap National Recreation Area. However, Expanded Amenity Fees are charged April through October.

- Day Use Expanded Amenity Fee Areas Include:
 - Smithfield Beach
 - Milford Beach
 - Turtle Beach
 - Bushkill Access
 - Dingmans Ferry Access

No fee is charged for those who are dropping off or picking up people from the river access ramps and those walking or biking through Smithfield Beach, Milford Beach, or Bushkill Access on the McDade Recreational Trail. Expanded Amenity Fees are not covered by America the Beautiful Annual Pass. However, holders of the America the Beautiful Senior and Access Passes, and National Park Service Golden Age and Golden Access Passes are eligible for a 50% discount on the Expanded Amenity Fees.

- Private vehicle (up to 7 persons): \$10.00 per vehicle
- Vehicles with 8 or more adults (age 16 or older): \$2.00 per person
- Pedestrian (age 16 or older): \$2.00 per person

Season passes can be purchased at park headquarters. Holders of the America the Beautiful Senior and Access Passes and National Park Service Golden Age and Golden Access Passes are eligible for a 50% discount on season passes.

- Season Pass: \$45
 - Second Season Pass registered to the same name and address: \$25
 - Third Season Pass registered to same name and address: \$12.50
- Recreation Fees
 - Valley View group campground
 - 5 - 25 persons per site
 - Reservations are required via www.recreation.gov.

- \$100 per site, per night
- Rivers Bend group campground
 - 5 - 25 persons per site
 - Reservations are required via www.recreation.gov.
 - \$100 per site, per night
- Middle Delaware National Scenic and Recreational River primitive campsites
 - Reservations are required via www.recreation.gov.
 - \$16 per site, per night; stays are limited to one night per site
 - See §2.10 of this document for additional river camping regulations.

36 CFR §2.31—TRESPASSING, TAMPERING AND VANDALISM

(a)(1) Trespassing

- All unoccupied National Park Service owned structures are closed to the public, except authorized individual(s) and/or activities.
- All occupied National Park Service owned residential structures and associated curtilage area as posted, except for authorized individual(s) and/or activities, are closed to the public.

36 CFR §3.6 – BOATING OPERATIONS

(a)(2) Launching or operating a vessel is prohibited, except at one of the following launch sites:

- Bushkill Access
- Caddoo Access (hand launch only)
- Dingmans Ferry Access
- Eshback Access
- Hidden Lake
- Kittatinny Point
- Milford Beach
- Namanock recreation site (hand launch only)
- Poxono Access
- Smithfield Beach
- Non-powered vessels and vessels exclusively powered by electric motors may be launched manually (no trailers) at any location, on any waters, within the park.

(b)(3) Operating a vessel at more than flat wake speed is prohibited in the following areas:

- within 500 feet upriver or downriver of the designated swimming area, as delineated by regulatory buoys is prohibited.

36 CFR §4.10 – TRAVEL ON PARK ROADS AND ROUTES

(a) Park roads, open for travel by motor vehicle are those indicated below:

- The list of Established Roads and Parking Areas is listed in Appendix A of this Compendium.

36 CFR §4.21 – SPEED LIMITS

(b) The following speed limits are established for the routes/roads indicated:

- Blue Mountain Lake Road - 35 mph
- Camp Road-15 mph
- Chestnut Ridge Road (NPS Section) – 35 mph
- Cliff Park Road – 15 mph
- Dingmans Access Road and parking lot – 15 mph
- Dingmans Campground – 5 mph
- Dingmans Falls Access Road – 25 mph
- Fisher School House Road – 25 mph
- Hialeah Picnic Area – 5 mph
- Hidden Lake recreation site – 15 mph
- Jager Road – 35 mph
- Johnny Bee Road – 25 mph
- Kittatinny Point – 15 mph
- Kuhn Road – 25 mph
- Main Street Walpack Center – 15 mph
- McDade Recreational Trail (Bicycles only)-15 mph
- Milford Beach Access Road – 15 mph
- Millbrook to Blairstown Road (SR 602) – 35 mph
- Mountain Road – 25 mph
- National Park Drive – 25 mph
- Old Dingmans Bridge Road – 25 mph
- Old Mine Road between SC 560 and SR 206 – 35 mph
- Old Mine Road between Pompey Road and Peters Valley-Dingmans Road (dirt section) – 25 mph
- Old Mine Road between Pompey Road and Worthington State Forest – 35 mph
- Peters Valley-Dingmans Road – 35 mph
- Pompey Road – 30 mph
- River Road (Pennsylvania) – 30 mph
- Skyline Drive – 15 mph
- Smithfield Beach Access Road and Parking Areas – 15 mph
- Turtle Beach – 15 mph
- U.S. Route 615 – 35 mph
- Thunder Mountain Road – 15 mph
- Upper Ridge Road – 25 mph
- U.S. Route 209
 - 25 mph as posted
 - 35 mph as posted

- 45 mph as posted
- Zimmerman Road – 25 mph

36 CFR §4.30 – BICYCLES

Bicycles and electric bicycles are allowed on park roads and in parking areas that are open to motor vehicle use by the public and on the following trails:

- McDade Recreational Trail
- The existing speed limit of 15 mph will apply to electric bikes on the McDade Recreational Trail.

The McDade Recreational Trail is a designated multi-use trail that is built and maintained for bicycle and pedestrian use in warmer months and for cross-country skiing and snowshoeing in the winter months. The superintendent designated the McDade Recreational Trail for bicycle use in 2000 and 2006 after a planning process that evaluated the impacts of bicycle use on the trail pursuant to 36 CFR 4.30. The Environmental Assessments are on file at the park.

On September 22, 2021, the superintendent designated park roads and parking areas that are open to motor vehicle use by the public and the McDade Recreational Trail as open to electric bicycles using the discretionary authority given to the superintendent under 36 CFR 4.30(i). Allowing electric bicycles on public roads and in parking areas and on the McDade Recreational Trail will create new opportunities for recreation and access within the park. It will not create any adverse impacts to park visitors, resources, or values due to the existing use of these locations by motor vehicles and bicycles. This action is covered by the categorical exclusion 3.3. D.3 in the NPS NEPA Handbook.

36 CFR §2.51 Public Assembly

(a) Demonstrations. The term “demonstrations” includes demonstrations, picketing, speechmaking, marching, holding vigils or religious services, and all other like forms of conduct that involve the communication or expression of views or grievances, engaged in by one or more persons, the conduct of which is reasonably likely to attract a crowd or onlookers. This term does not include casual park use by visitors or tourists that is not reasonably likely to attract a crowd or onlookers..

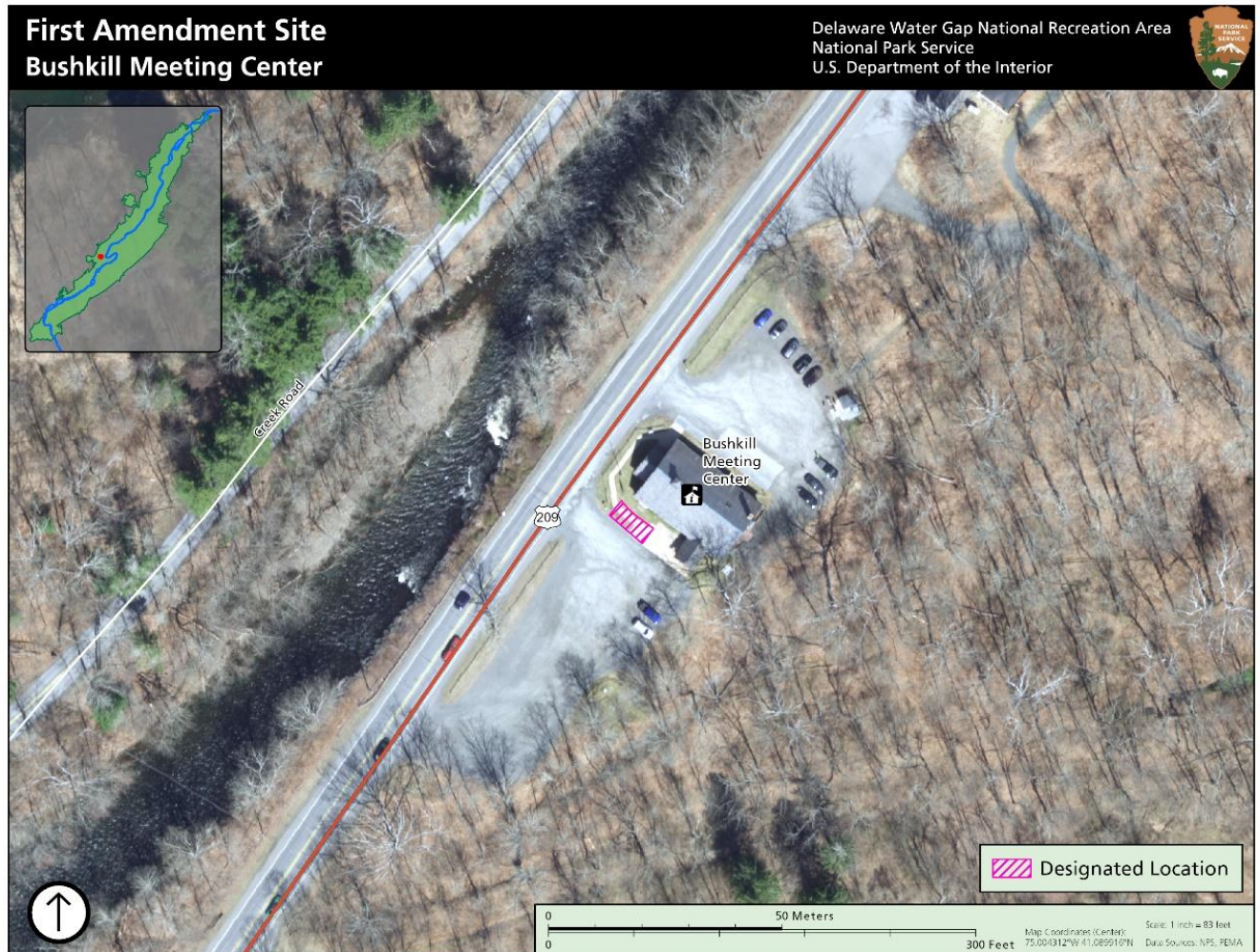
- Permits and the small group permit exception:
 - Demonstrations are allowed within park areas designated as available, when the superintendent has issued a permit for the activity, except that:
 - Demonstrations involving 25 persons or fewer may be held without a permit within designated park areas, provided that:
 - None of the reasons for denying a permit that are set out in **paragraph (f)** of this section are present;
 - The group is not merely an extension of another group already availing itself of the small group permit exception under this provision;

- They will not unreasonably interfere with other permitted demonstrations and special events, or park program activities; and
 - (Hand-carried signs may be used, but stages, platforms, or structures may not be used.
- (c)(2) Designated locations:

- Bushkill Access: the lawn area immediately adjacent to the restrooms, on the north side



- Bushkill Meeting Center: the south side of the building on the west side of the entrance, on the sidewalk



- George W. Childs Park: the grassy area and pull off area adjacent to the northernmost restroom building



- Park Headquarters: on the sidewalk to the side of the main entrance, between the stairs and the building



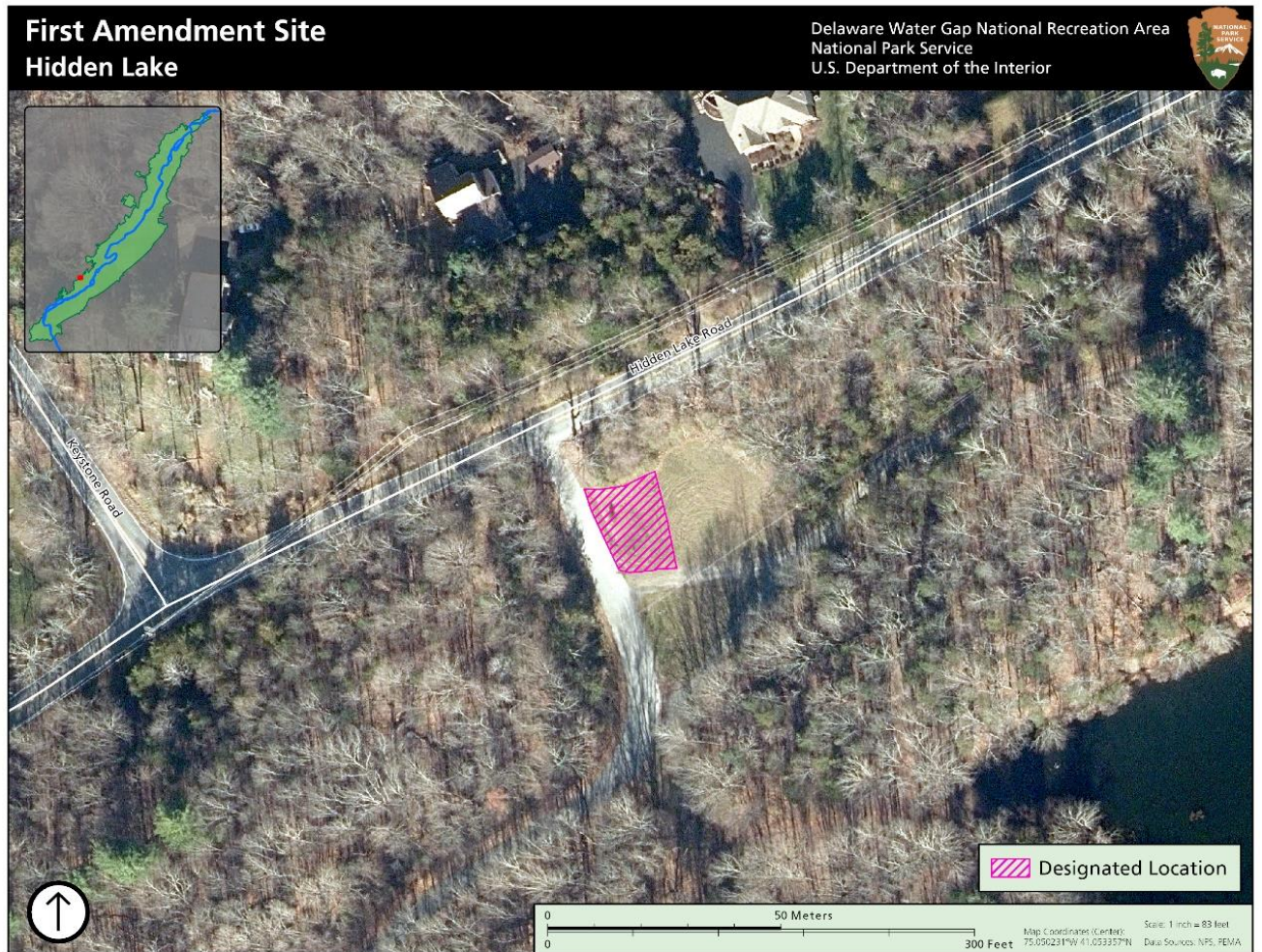
- Dingmans Access: on the lawn area between the entrance road and the restrooms



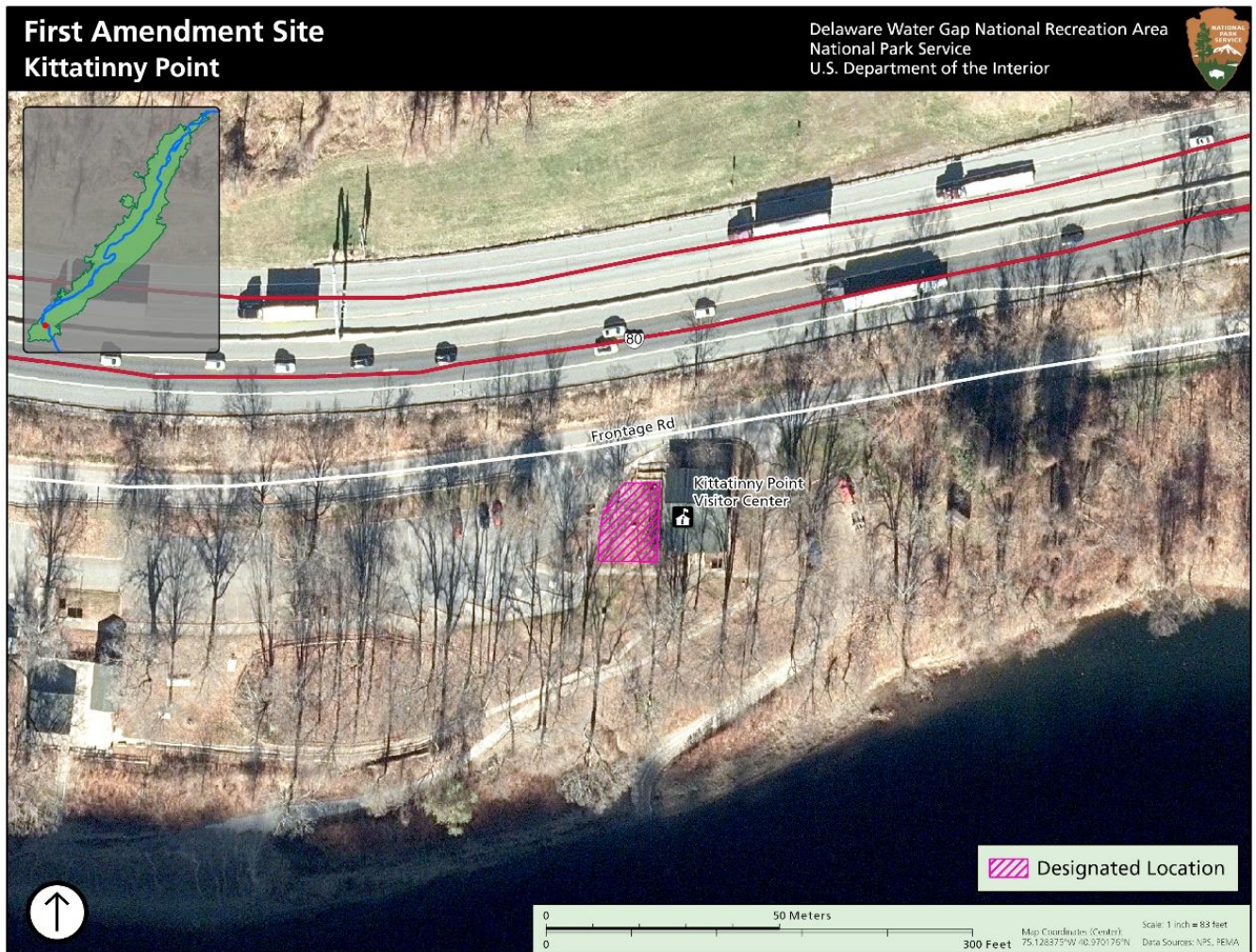
- Dingmans Falls: on the sidewalk at the southeast end, to the left of the main entrance stairs and side entrance to the visitor center when viewed from the parking lot.



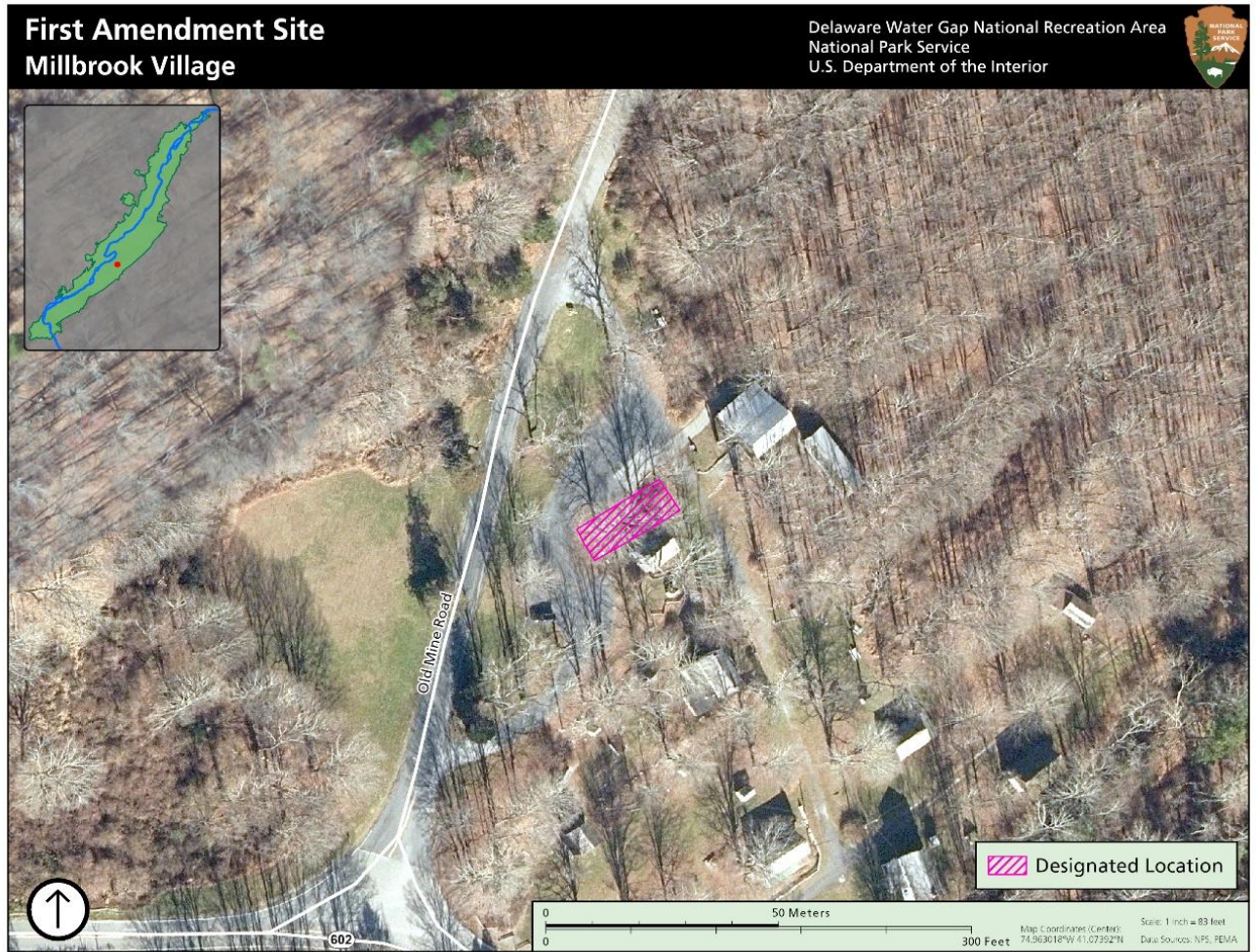
- Hidden Lake: on the north side of the entrance road, just off Hidden Lake Drive



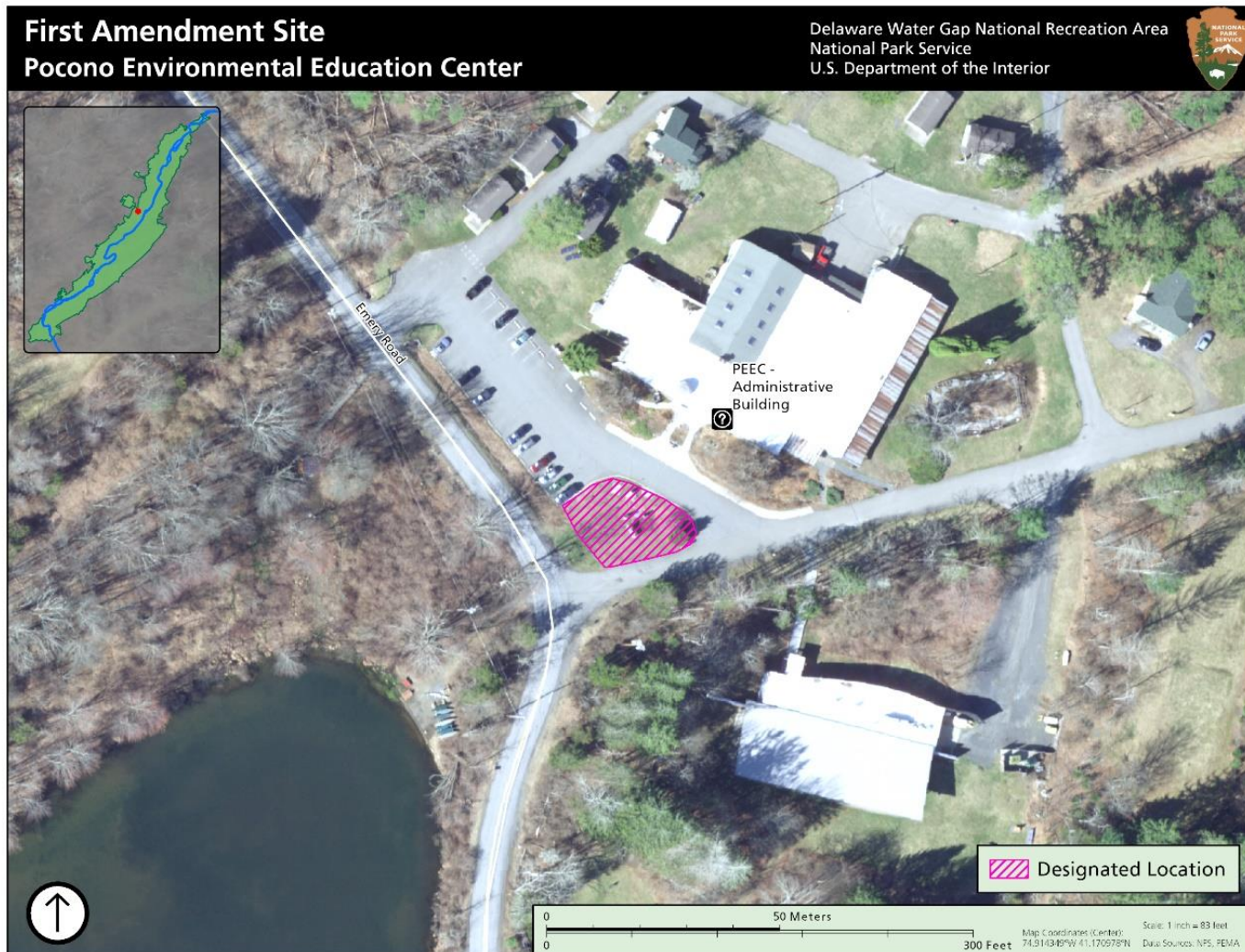
- Kittatinny Point: to the right of the covered pavilion near the restrooms



- Millbrook Village: outside of and to the right of the Spangenberg Cabin, next to the main parking lot and along the gravel land leading into the village



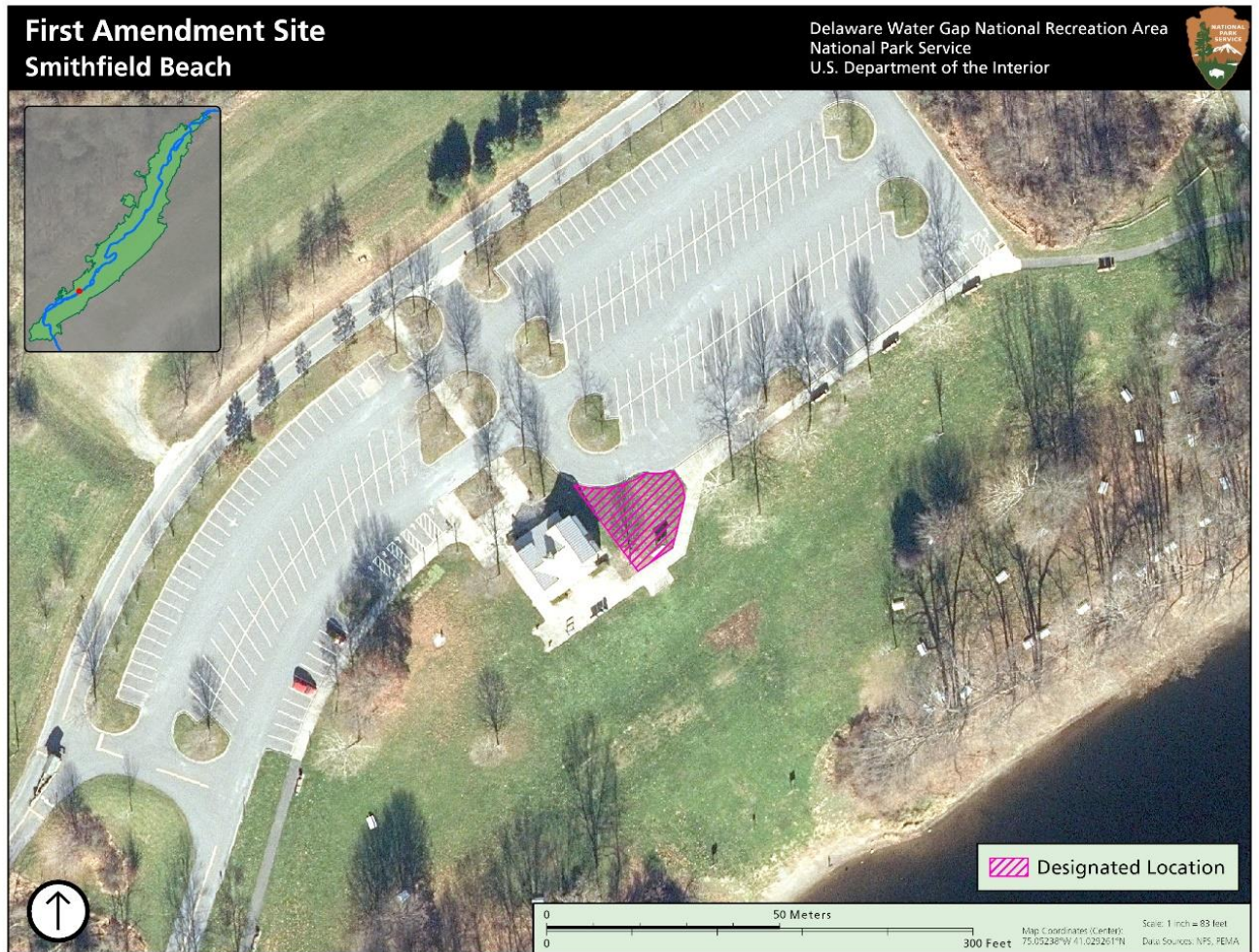
- Pocono Environmental Education Center: near the entrance sign for the main parking area and building



- Peters Valley School of Craft: on the lawn area just west of the office at the parking area



- Smithfield Beach: on the lawn by the overflow parking area



- Milford Beach: In the middle of the grassy field on the left when entering the beach area



The designated location is in a prominent location near the visitor center that will allow individuals and groups to conduct demonstrations in a manner that will allow for effective communication of speech and other protected activities. At the same time, the designated location leaves ample space for visitors to enter and leave the visitor center safely and for the NPS to conduct administrative activities such as interpretive events.

COMPENDIUM APPENDIX A

List of Established Public Roads and Parking Areas New Jersey

Montague Township Road

- Rubin Hill Road from Route 521 to the NPS boundary

Private roads

- Dingmans Bridge from Route 560 to the PA state line

Sandyston Township Roads

- Mettler Road (40 Acres Road) from Old Mine Road to intersection with VanAuken Road.
- VanAuken Road to termination point

State of New Jersey Roads

- NJ 206 from PA/NJ state line to the Clove Road intersection
- Old Mine Road within Worthington State Forest (WSF) from I-80 to the WSF boundary

Sussex County Roads

- SC 560 from the Dingmans Bridge to the NPS boundary
- SC 521 from Route 206 North to the NPS boundary
- Deckertown Turnpike from NJ 206 to the NPS boundary

National Park Service Roads

- Birchenough Cut-Off Road
- Blue Mountain Lakes Road from the Old Mine Road to the bottom of Fiddler's Elbow where it joins into Route 627
- Bunnel Road
- Buck Bar Access Road (Ames/Jennings)
- Caddoo Road
- Camp Mohican Access Road
- Depew Recreation site access road from Old Mine Road to the Fairman Road
- Fishers Schoolhouse Road

- Jager Road from Old Mine Road intersection to the NPS boundary
- Kerr Road from SC 521 to Kerr Area parking lot #1
- Kuhn Road from the 615 intersection to the Old Mine Road intersection
- Lloyd Road from SC 521 to Kerr Area parking lot #2
- Lloyd Roberts Road from SC 521 to Roberts parking lot
- Millbrook to Blaiirstown Road: from Millbrook Village to the eastern NPS boundary
- Mountain Road from the NPS boundary near Haneys Mill north to the NPS boundary beyond the Fairman Tract, from the NPS boundary near Three Bridges Road North to the NPS boundary north of the Stewart Tract.
- Namanock Road
- Old Dingmans Bridge Road from Peters Valley to Dingmans Road to the NPS boundary
- Old Milford Bridge Road from SC 521 to the NPS boundary
- Old Mine Road within the boundaries of the park
- Penn Avenue
- Peters Valley to Dingmans Road
- Peters Valley parking lot access road
- Pompey Road from Route 615 near the Walpack Valley Campground to Old Mine Road
- Rivers Bend Group Camping Area Access Road: from the Old Mine Road to the camping area; (designated and open only for vehicular travel associated with permitted camping)
- Simmons Road from SC 521 to Simmons parking lot
- Rt 615 from Old Mine Road at Flatbrookville to the NPS boundary
- Skyline Drive from Blue Mountain Lakes Road to the Crater Lake parking area
- Three Bridges Road (westbound lane) from Mountain Road to SC 615
- Thunder Mountain Access Road
- Thunder Mountain Road (Ridge Road) from the Thunder Mountain School to the Kuhn Road intersection
- Upper Ridge Road from SC 560 north to the barrier gate by Lake Kittatinny
- Lower Van Campens Glen Recreation Site Access Road from the Old Mine Road to Lower Van Campens Glen Picnic Area parking lot
- Van Etten Road from Old Mine Road to the barrier gate
- Walpack Center Road (Military Road) from Rt 615 to eastern NPS line at Stokes State Forest
- Watergate Recreation Site Access Road: from the Old Mine Road to the Watergate Recreation Site parking lot

List of Established Parking Areas - New Jersey

- American Youth Hostel parking lot
- Ames Access parking area
- Appalachian Trail parking areas, north end of Blue Mountain Lake Road
- Appalachian Trailhead parking north/south of the Millbrook/Blaiirstown Road

- Auns Access parking area
- Berry Lane parking area
- Blue Mountain Lake parking area
- Bradley Overlook parking area
- Buczek parking lot
- Bunnel lot
- Buttermilk Falls parking lot
- Caddoo parking lot
- Calestini parking lot
- Calno parking area
- Camp Kittatinny parking lot
- Chudzik Access parking area
- Coppermine parking area
- Darrones parking lot
- Coventry Pond Trailhead parking area
- Crater Lake parking area
- Depew Picnic Area parking
- Fairman parking lot
- Fisherman Access (3)
- Flatbrookville Bridge parking areas
- Forty (40 Acres) parking lot(s)
- Fricke parking lot
- Girl Scout parking area
- Hidden Falls parking area
- Hull Tract parking area
- Karamac parking area
- Kerr parking lot
- Kittatinny Visitor Center parking lots
- Knight Farmhouse
- Layton Gravel Pit lot
- Lloyd Roberts parking lot
- Millbrook parking area
- Minisink Island Access parking lot
- Minisink Reformed Church parking lot
- Montague Ballfield parking area
- Montague Grange parking area
- Mountain Road South parking lot
- Namanock Island parking lot
- Namanock Recreation Site parking areas
- New Jersey District Ranger Station lot
- Old Dingmans Bridge Road parking lot
- Old Milford Bridge parking lot
- Peters Valley Craft Village lot
- Quick Island parking lot
- Quinn Tract parking area
- Ratcliff parking area

- Ricks Rocks parking area
- Roberts Stonehouse parking area
- Roberts Farm parking lot
- Roccas parking area
- Scanlon parking area
- Simmons parking lot
- Skyline Drive Overlook parking area
- Smooth Rock fishermans access
- Stephens Point parking area
- Thunder Mountain Access lot
- Thunder Mountain School lot
- Upper Van Campens Glen parking area
- Utter parking lot
- Van Campen Inn parking area
- Van Campens Picnic parking area
- Van Etten parking lot
- Walpack Center parking lot
- Walpack Environmental Education Center
- Watergate parking lot
- Woods Road Gate parking lot

List of Established Roads – Pennsylvania

Borough of Delaware Water Gap

- Delaware Avenue
- Mountain Road from Route 611 to the intersection of Water Gap Country Club Road
- Lake Road from Mountain Road to the Lake Lenape Gate and parking area

Commonwealth of Pennsylvania

- Milford Beach Road (SR 2013) from US 209 to parking lot entrance
- Bushkill Falls Road (SR 2003) from intersection with US 209 to intersection with Milford Road at Bushkill Corners
- Milford Road (SR 2001) from intersection with Bushkill Falls Road at Bushkill Corners to US 6, Milford
- Raymondskill Road (SR 2009) from US 209 to junction SR 2001
- Silver Lake Road (SR 2004) from SR 739 to Childs Park west boundary
- SR 611 from Portland, Pa. to Delaware Water Gap, Pennsylvania
- SR 739 (Upper Rt. 739) from US 209 to junction Milford Rd (SR 2001)
- SR 2019 (Lower Rt 739) from US 209 East to Dingmans Choice and Delaware River Bridge Company (at toll booth)
- Wilson Hill Road (SR 2002) from US 209 to junction T-323

Delaware River Joint Toll Bridge Commission Roads

- D.R.J.T.B.C. Administrative/Maintenance Roads from US 206, all improved roads on D.R.J.T.B.C. property
- US 206 from junction US 209 to state line

Delaware Township Roads

- Chestnut Ridge Road (T-323) from West NPS Boundary at tract 10142 to junction w/Wilson Hill Road (SR 2002) and T-323 and from US 209 West up to the junction with the access road to the Morgan property
- Park Road (T-344) from SR 2004 to SR 2001
- Conashaugh Road (T-339) from T-intersection w/ Zimmerman and Long Meadow Road North and West to Delaware-Dingman Township line
- Doodle Hollow Road (T-354) from Silver Lake Rd to Johnny Bee Road
- Emery Road (T-318) from Lehman-Delaware Township line to Chestnut Ridge Road (T-323)
- Johnny Bee Road (T-325) from SR 2001 to junction with Mary Stewart Road (T-348)
- Long Meadow Road (T-362) from SR 2001 East and North to intersection with Zimmerman and Conashaugh Road (T-339)
- Mary Stewart Road (T-348) from SR 2002 to junction T-325
- Myck Road (T-346) from T-344 to SR 2001
- Sproul Road (T-358) from SR 739 to NPS boundary gate

Dingmans Township Roads

- Old Bridge Road (T-426) from US 209 to Sawkill Creek Bridge and Mott Street, Milford
- Cliff Park Road (T-383) from adjacent to the H. Buchanan Residence South to SR 2001
- Conashaugh Road (T-362) from Delaware-Dingman Township line to SR 2001
- Metz Road (T-387) from US 209 to SR 2013

Lehman Township Roads

- Big Egypt Road (T-310) from Farda tract East boundary to Milford Rd (SR 2001)
- Brisco Mountain Road (T-314) from US 209 to Milford Rd (SR 2001)
- Brodhead Road (T-304)
- Church Lane (T-305)
- Creek Road (T-301)
- Emery Road (T-318) from Brisco Mtn. Rd (T-314) to Lehman-Delaware Township line
- Little Egypt Road (T-337) from US 209 to Milford Road (SR 2001)
- Sugar Mountain Road West (T-300) from Winona Falls Road (T-301) to

- Sugar Mt Road East (T-305)
- Sugar Mountain Road E (T-305) from SR 2001 (Milford Road aka Bushkill Falls Road) to intersection w/Sugar Mt Road West (T-300)
- School House Lane from (Church Lane) T-305 to termination point
- Toms Creek Rd (n entrance)(T-306) from US 209 to Little Egypt Rd (T-337)
- Thurner Road (T-313) from Emery Road (T-318) to SR 2001

Middle Smithfield Township Roads

- Church Hill Road (Zion Church Road) (T-546)
- Community Drive (T-633)
- Freeman Tract Road (T-515) from River Road to Hogback Road (Closed weekends from dusk on Fridays to noon on Mondays.)
- Jag Road from River Road to Freeman Tract Road
- River Road T-515, from just West of intersection with Community Drive (T-633) to US 209
- Hidden Lake Drive (T-517) from River Road to Hollow Road
- Michael's Hill Road (T-538) from T-517 (Hidden Lake Drive) .83 miles to John Michael's driveway (Township Line)
- Mosiers Knob Road (T-516) from Zion Church Road (T-546) South .97 miles to the Michael's Homestead Barn (Township Line)
- Winona Falls Road (T-524) from US 209 to the Township line at the Howeytown Bridge (just East of intersection with Creek Road).

Milford Borough Streets

- East Hartford Street (T-425) from T-387 to 2nd Street
- Milford Dump Road from US 209 to town dump, Tract 12115
- Mott Street from Sawkill Creek Bridge to park boundary

Privately Owned Roads

- Dingmans Cemetery Roads from US 209 to SR 739
- Dingmans Choice toll bridge from SR 2019 to state line - center of bridge
- Rackmill Road from US 209 to US 209
- VanWhy Road from T-305 to termination point at Tract #7350
- The Water Gap Country Club access and Service Road from the intersection of Mountain Road to the intersection with T-383 (Totts Gap Road)

Smithfield Township Roads

- Michaels Road (T-538) from John Michael's Driveway .7 miles to intersection with Mosiers Knob Road
- Mosiers Knob Road (T-515) from junction of T-538 (Michael's Road) South for 1.1 miles
- Totts Gap Road (T-383) from Cherry Valley Road to East boundary of TR 307

(Township line)

Upper Mount Bethel Township Roads

- National Park Drive (T-707) from blacktop 2.5 miles west to intersection with T-730 (Totts Gap Road)
- T-738 from Turkey Ridge Road to SR 611 (not open)

Westfall Township Roads

- Independence Lane (T-454) from SR 6/209 to NPS gate
- Phillips Lane (T-395) from US 209 to Tract 12404 Cul-de-sac
- Roberts Lane (T-395) from US 209 to end

National Park Service Roads

- Adams Creek parking area (East) from US 209 to parking loop
- Beck Road (T-336) from US 209 to termination point
- Big Egypt Road from T-306 to Farda tract east boundary
- Callahan House from US 209/206 to parking area
- Chestnut Ridge Road (T-323) from Morgan access road West to NPS boundary at tract 10142
- Childs Park lower parking lot from Silver Lake Road (SR 2004) including improved parking area adjacent to SR 2004 near jct. T-344 (Park Road)
- Childs Park upper parking lot from Park Road (T-344)
- Cliff Park Inn Road from SR 2001 (North Entrance) South to the intersection with (T-383) adjacent to the H. Buchanan residence
- Deckers Ferry Road from Hogback (T-515) to termination point
- Dingmans Campground Roads from US 209 through campground to River road cable gates, and adjunctive service roads
- Dingmans Falls Road from Johnny Bee (T-327) to visitor center parking lot and overflow parking lot
- Dingmans Fire Cache Road from Schoolhouse Road to Dingmans Fire Cache to US 209, and to woods line behind fire cache area along fitness trail
- Dingmans Launch and parking lots from SR 2019
- Dingmans Post Office entrance and parking lots from SR 2004 lot to T-354
- Doodle Hollow Road (T-354) from Tract 10733 to junction with T-325 (Johnny Bee Road)
- Eshback Launch from US 209 to boat launch.
- Green Road from Creek Road to termination point
- Hackers Falls Access Road from SR 2001 to parking lot
- Hialeah Picnic area roads
- Hidden Lake Road that services beach and picnic areas
- Hidden Lake Road that services the Hidden Lake group campsite and Hidden Lake Lodge to Zion Church Road
- Indian Ladders Access from US 209 to parking lot

- Indian Point Access Road (McCarty's) from US 209 to pipe gate
- Jerry Lee Camp Road from US 209 to cul-de-sac
- Johnny Bee Road from US 209 to intersection with Mary Stuart Road
- Loch Lomond Picnic Area from Wilson Hill (SR 2002) to pond spillway
- Lord's Tract Access Road
- Milford Beach Access Roads from Milford Beach Rd (SR 2013)
- Milford North River Road from SR 2013 to private property
- Morgan Cabin Road from Chestnut Ridge Road to private property
- Mosiers Knob Road from the Michael's homestead barn .5 miles South to the intersection with T-538 (Michael's Road)
- Mountain Road from Delaware Water Gap Country Club to the intersection with T-383 (Totts Gap Road)
- National Park Drive from State Route 611 to intersection of the gravel portion of NPS Drive
- North Contact Station Road from US 209 to US 209, including turnaround area
- Parking loop, from T-310 to T-310 (Upper Big Egypt Road)
- Pierce House driveway/parking area from SR 6/209 to public parking area
- Phillips Lane cul-de-sac on Tract 12404 only
- Pocono Environmental Education Center (PEEC) roads: from Brisco Mountain Road including all improved roads serving PEEC
- River Road within the boundaries of the Recreation Area
- Rocco Access Road from SR 739 to Rocco property
- Sambo-Mary Road from T-515 (Freeman Tract Road) to termination
- Sloat Tract Road (off Bushkill Falls Road, East of intersection with Milford Rd)
- Smithfield Beach entrance and service roads
- South Contact Station Roads from US 209, mile .3, to US 209
- Stucki Pond Road (Old T-311) from SR 2001 to pond
- Tocks Flying Field Road from US 209 to parking lot, except during such times as closed by cable gate
- Tom's Creek Ford Parking Access from US 209 to parking lot
- Tom's Creek Picnic Area from T-306 to T-306
- Totts Gap Road (T-418) from East boundary of Tract 307, (Township Line), to Fire Tower Road
- Tower Road from Tott's Gap Rd (T-418) to the gate, East of the gas pipeline
- Tract 10326 Road from SR 2019 to private property
- Turn's Residence Road from US 209 to US 209
- US Highway 206 from middle of Sawkill Creek Bridge, Milford, to Delaware River Joint Toll Bridge Commission entrance
- US Highway 209 from South boundary North of Fernwood to the middle of Sawkill Creek Bridge, Milford
- Venturo Road from US 209 to restroom
- Whitesell Pond Road from T-314 to the pond
- Yetter Tract Roads identified as:
 - Lenape Drive to termination point
 - Minisink Drive to termination point
 - Kittatinny Drive to termination

- Tuscaroro Drive to berm
- Algonquin Drive to berm
- Zimmerman Road from US 209, (North and South Entrance) to intersection with Long Meadow (T-362) and Conashaugh Roads (T-339)

List of Established Parking Areas - Pennsylvania

- Brisco Mountain parking lot
- Creek Road, pull off 20 yards South of US 209
- Bushkill Falls Road
- Old Bushkill Post Office
- Peter's House (Old Craft Gallery)
- Old Bushkill Fire House – NPS Fire Management Office
- Bushkill Launch Area
- Chestnut Ridge Road parking lot
- George W Childs Park
- Conashaugh View Farm parking lot (Open Only During Bear and Deer Hunting Seasons)
- Community Drive at Schoonover Community House
- Daney Tract
- Deckers Ferry Landing
- Dingmans Falls parking lots
- Dingmans Launch parking lots
- Doodle Hollow parking lot
- Eshback Launch parking lot
- Egypt Mills parking lot
- Flying Hawks Airpark parking
- Freeman Tract Road
- Camp Miller-Hagen area, adjacent to Cable Gate
- Freeman Tract Road at Shad Rocks
- Green's Road, East side, 200 yds South of Vandercarr Tract
- Green Tract Road at termination point
- Hacker Falls parking lot
- Hialeah Air Park parking area
- Hialeah Picnic Area parking area
- Hidden Lake parking area
- Indian Ladder parking lot
- Indian Point parking lot
- Jerry Lee parking lot
- Johnny Bee Road (Southside), (West of and Adjacent to US 209)
- King Shale Pit parking lot
- Lake Lenape Access parking area
- Lord's Tract parking area
- Milford Beach parking lot
- Mosiers Knob Road
- Across from Bair Tract

- East Side 50 feet south of Zion Church Hill Road intersection
- West side adjacent to Warnkey's Pond
- National Park Drive at Duck Pond
- Pickerel Pond parking lot
- Pow Wow Hill parking lot
- Raymondskill Falls parking lots
- River Road
 - East side, 1/4 mile north of Zion Church Hill Road.
 - East side, south boundary (Shawnee)
 - West side, .5 miles south of park headquarters
 - West side, 1/4 mile north of Hialeah Picnic Area
 - West side, .3 miles south of Smithfield Beach
 - River Road at Shangri-La River Access 1/4 mile south of Camp Ministerium
- River View/McDade parking
- DEWA Headquarters and Maintenance Compound
- Zion Church/Sandy Beach Access parking area
- Roberts Lane River Access
- Sambo-Mary Road termination point
- Shanna Airfield River Access parking lot
- Sloat Tract parking area
- Smithfield Beach parking areas
- PA Route 611
- Arrow Island Overlook
- Cold Air Cave, West side
- Point of Gap Overlook
- Point of Gap Overlook, East side
- Resort Point Overlook
- State Route 2001 (Bushkill Falls Road)
- One mile West of Old Bushkill Fire Hall, North side
- Rising Waters
- Sproul Road - Adjacent to NPS Gate
- Stuckis Pond parking lot
- Toms Creek Picnic Area parking lot
- Turn's Store
- Turn's Store, East side
- Adams Creek parking lot (2)
- Bushkill Boat Launch
- Bushkill Meeting Center
- Lower Indian Ladder parking lot
- US route 209 Milepost:
 - Mile 3.0 Pull off
 - Mile 4.0 State Tract Access Road to Gate
 - Mile 5.1 Toms Creek Shale Pit parking lot
 - Mile 6.0 Old 209 roadbed southbound
 - Mile 7.5 Mill Creek pull off southbound

- Mile 8.3 Sterns Cabin Road pull off northbound
- Mile 9.5 Hornbeck Road pull off southbound
- Mile 11.0 Wayside Inn northbound
- Mile 11.6 Old 209 roadbed southbound
- Mile 12.0 Old 209 roadbed southbound
- Mile 12.6 Shay Shale Pit southbound
- Mile 13.2 Pull off northbound
- Mile 18.0 Pull off southbound
- Mile 18.2 Pitman Orchard northbound
- Mile 18.3 Pitman Shale Pit southbound
- Mile 18.5 Pull off southbound
- Mile 18.8 Pitman Orchard northbound
- Mile 18.5 Pull off southbound
- Mile 19.7 Pull off southbound opposite Fechter Pond
- North Contact Station parking lot
- Old Bushkill Bank site
- Reformed Church of Bushkill
- South Contact Station
- Former Gulf Station
- Stockpile 8 parking lot
- Toms Creek Ford parking lot
- Upper Zimmerman parking lot
- Valley View (East and West side)
- Venturo Access parking lot
- Winona Falls Road
- Bushkill Emergency Corps Building
- Howeytown Bridge, East side
- Zimmerman River Access parking lot
- Zion Church Hill Road
- North side at Shukaitis Tract