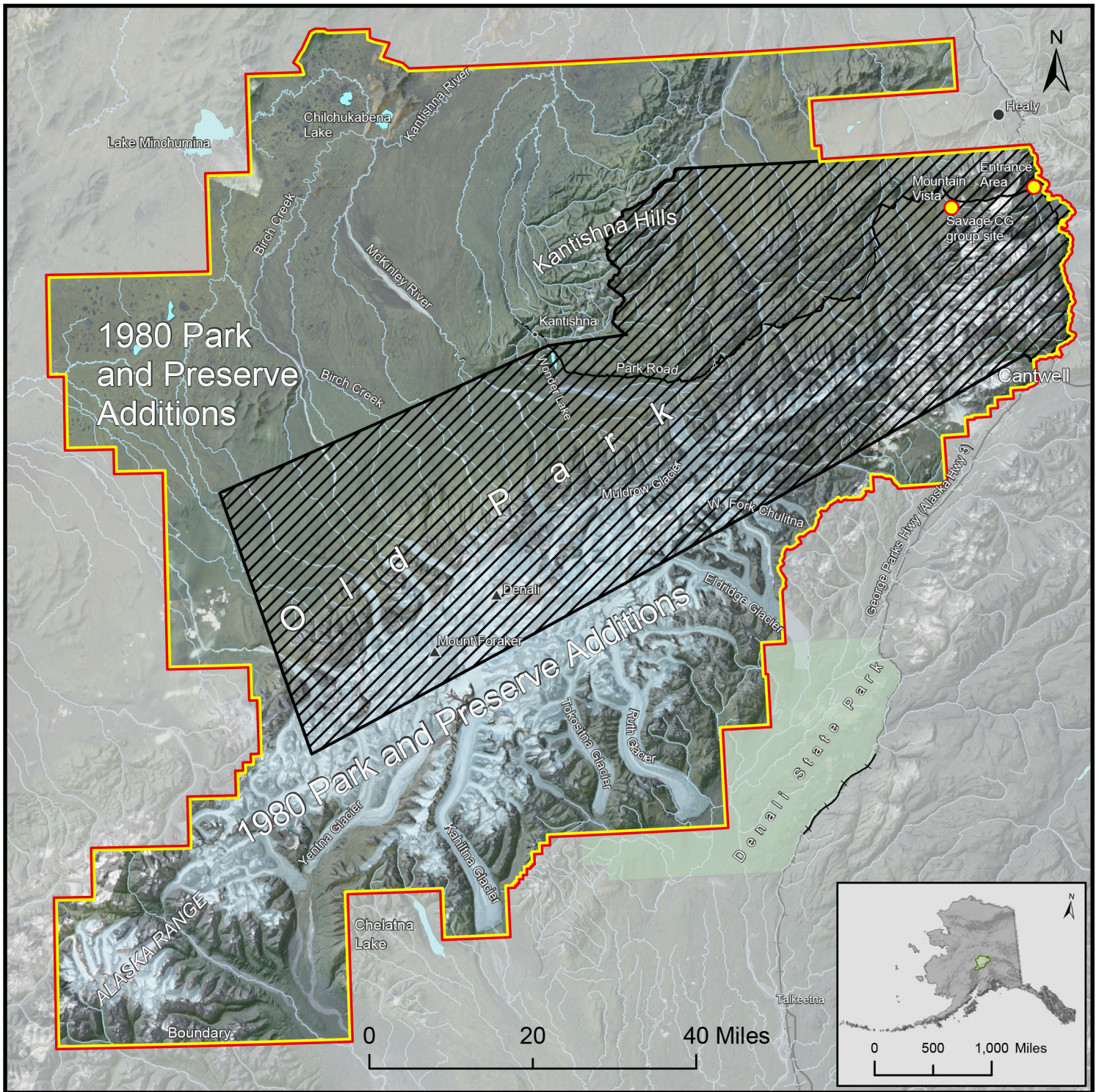



National Park Service - Denali National Park and Preserve Commercial Use Authorization Map - General Activities

This map shows areas designated for Commercial Use Authorizations within Denali National Park and Preserve.

Please note that private lands exist within the park boundary. It is the responsibility of the permittee to get specific approval from the landowner before accessing private land.



 Areas Closed to CUA Activities Except Limited use of Mountain Vista Rest Area, Savage River Campground Group Sites, and the Wonder Lake Area.

 Areas Designated for CUA Activities

All use subject to federal regulations and terms and conditions of the permit.