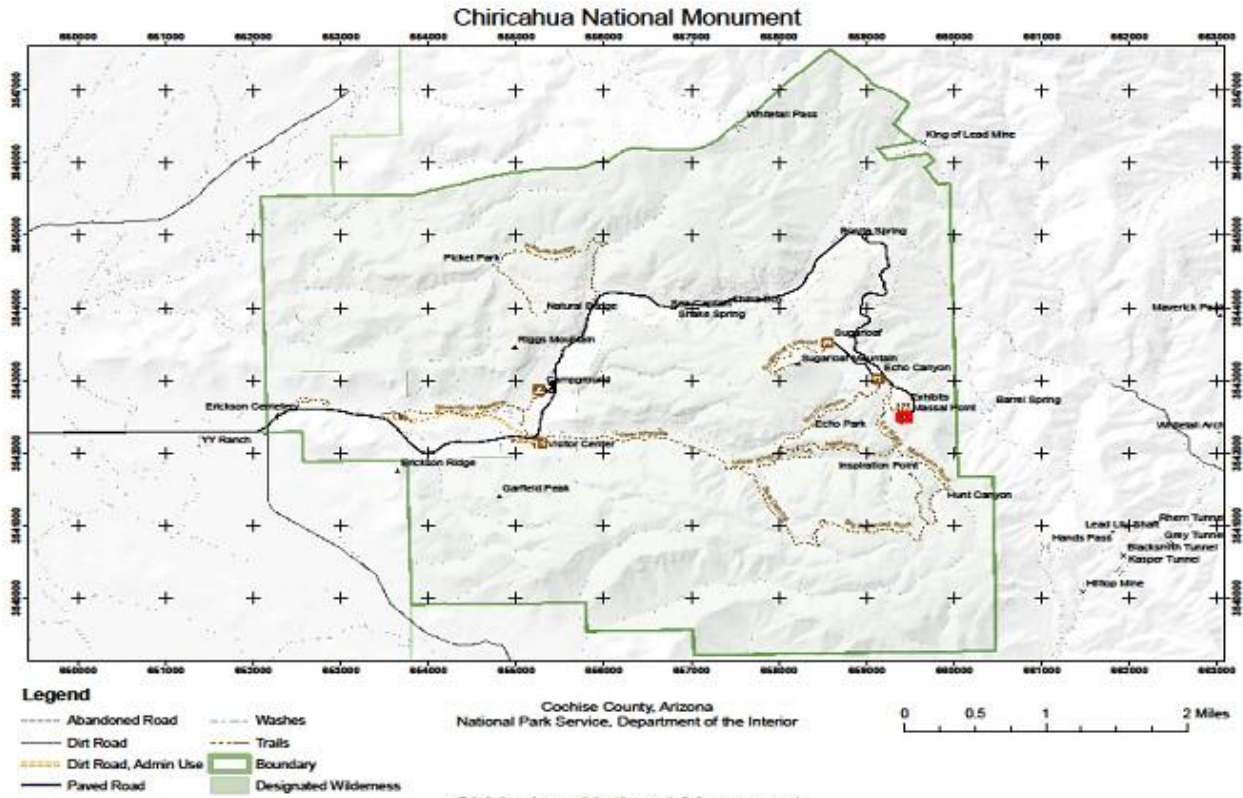


# Southeast Arizona Group First Amendment Locations

## Chiricahua NM - Massai Point



## Chiricahua National Monument First Amendment Area



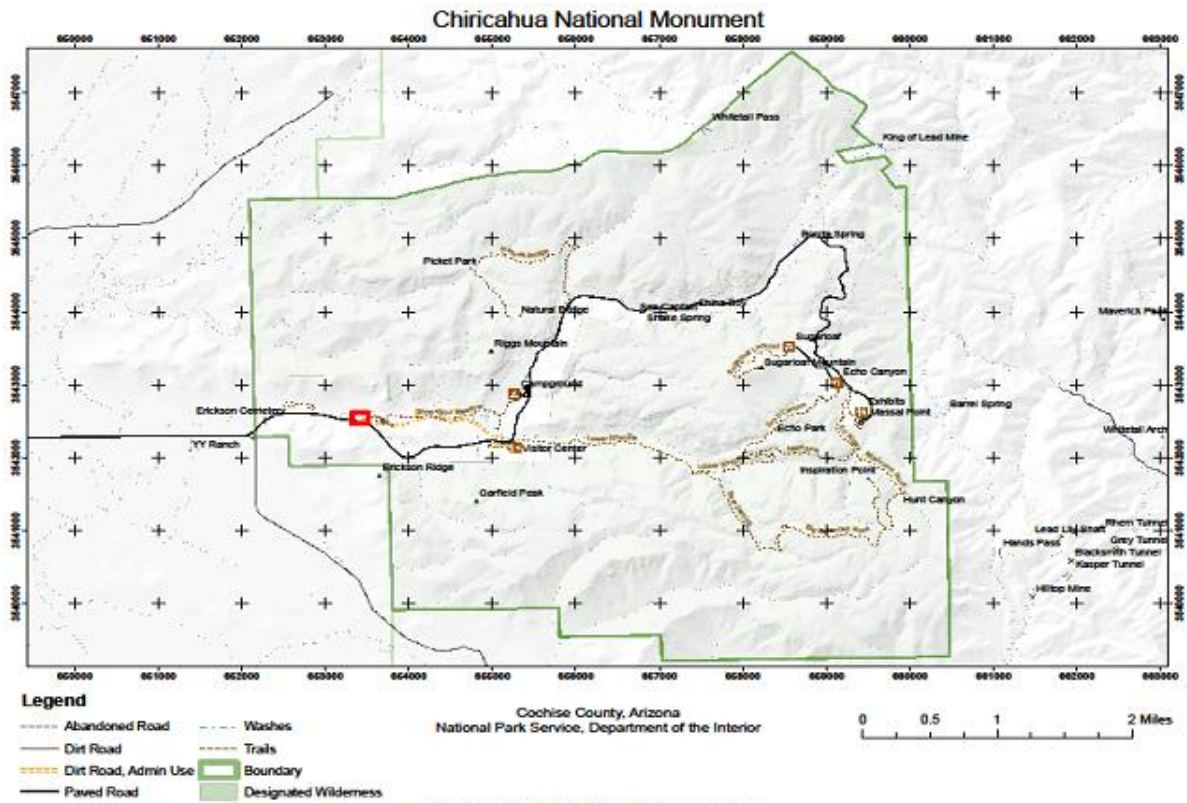
**Legend**

- First Amendment Area - approximately 20 feet squared

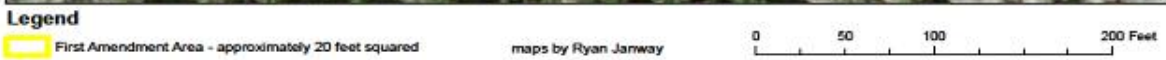
maps by Ryan Janway

Scale: 0 30 60 120 Feet

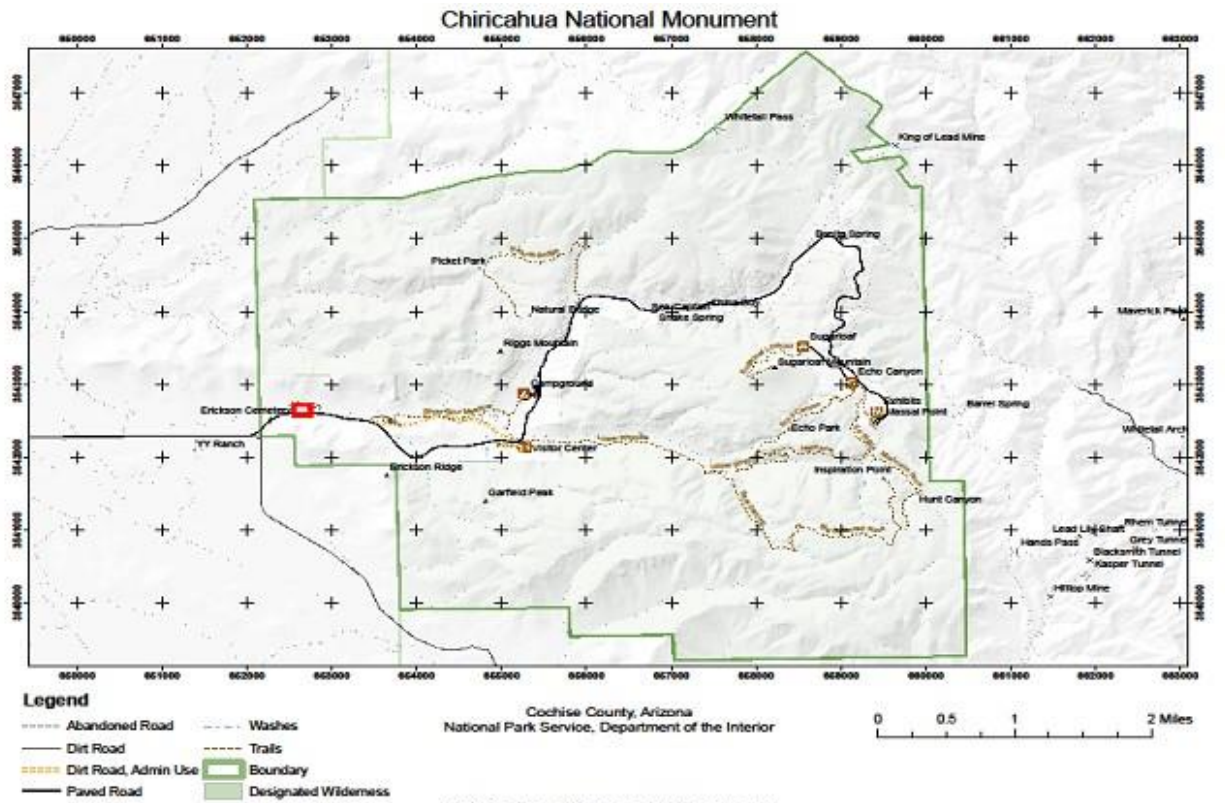
# Chiricahua NM - Faraway Ranch Parking



## Chiricahua National Monument First Amendment Area



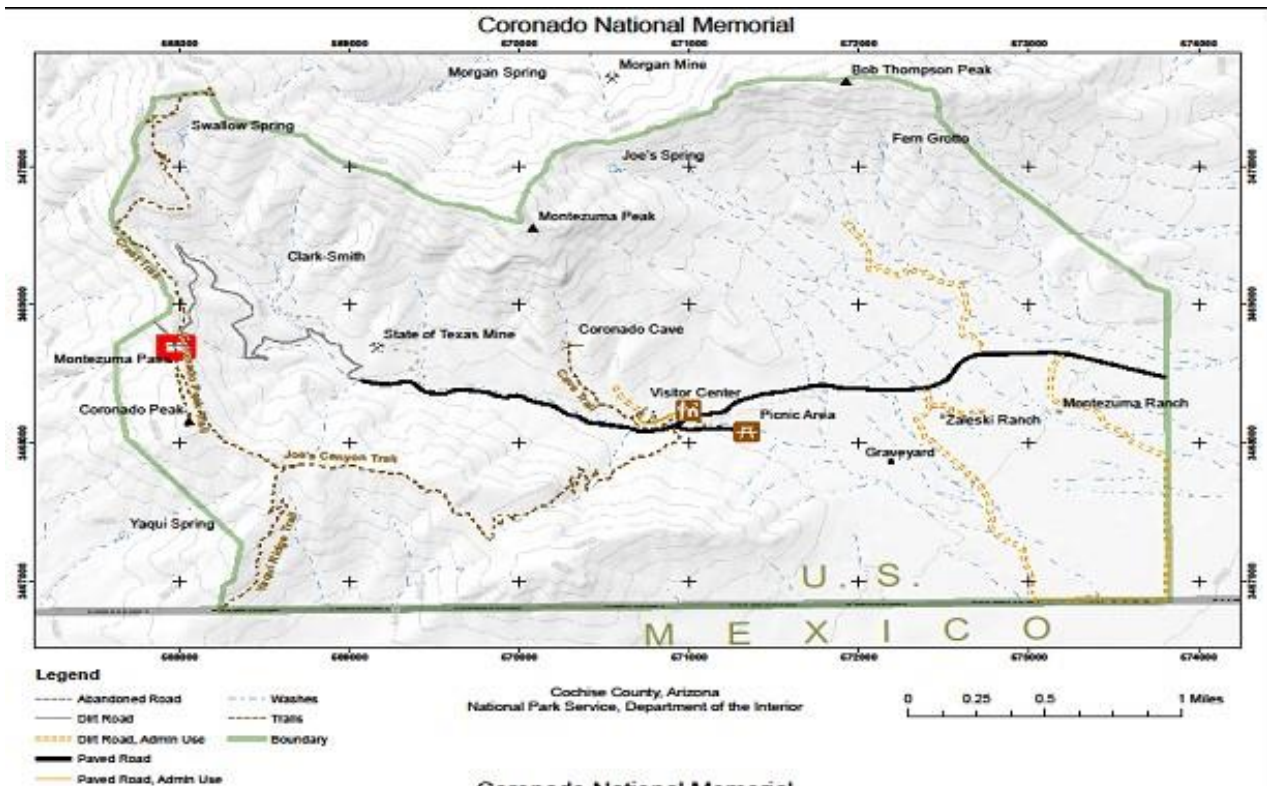
# Chiricahua NM - Bonita Creek Parking



## Chiricahua National Monument First Amendment Area



# Coronado NMem – Montezuma Pass



# Coronado NMem – Entrance Sign



**Legend**

- Abandoned Road
- Washes
- - - Dirt Road
- - - Trails
- Dirt Road, Admin Use
- Boundary
- Paved Road
- Paved Road, Admin Use

Cochise County, Arizona  
National Park Service, Department of the Interior

0 0.25 0.5 1 Miles

## First Amendment Area Near Entrance Sign



**Legend**

- First Amendment Area - approximately 25 feet squared

maps by Ryan Janway

0 50 100 200 Feet

# Fort Bowie NHS – Trailhead



- Legend**
- Abandoned Road
  - Washes
  - - - Dirt Road
  - - - Trails
  - Dirt Road, Admin Use
  - Boundary
  - Paved Road
  - Paved Road, Admin Use

## First Amendment Area Near Entrance Sign

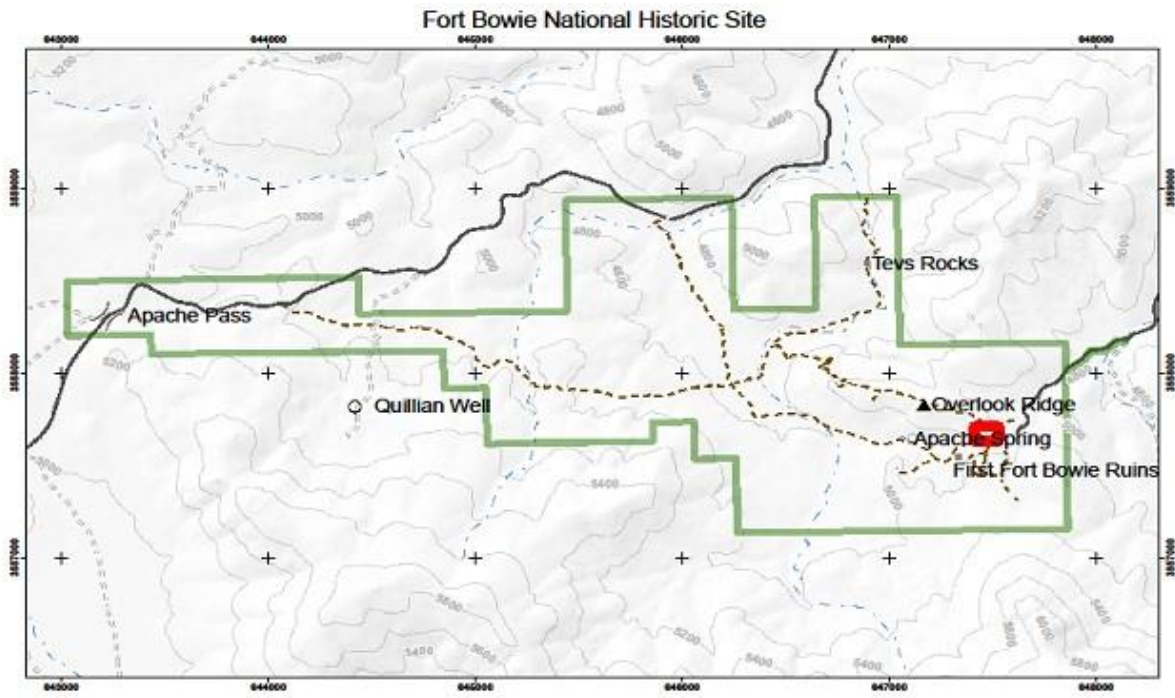


- Legend**
- First Amendment Area - approximately 25 feet squared

maps by Ryan Janway



# Fort Bowie NHS – Visitor Center



**Legend**  
 - - - - - Abandoned Road    - - - - - Washes  
 - - - - - Dirt Road        - - - - - Trails  
 - - - - - Dirt Road, Admin Use    - - - - - Boundary  
 - - - - - Paved Road

Cochise County, Arizona  
 National Park Service, Department of the Interior

0 0.225 0.45 0.9 Miles

## Fort Bowie National Historic Site First Amendment Area



**Legend**  
 [Yellow Square] First Amendment Area - approximately 20 feet squared

maps by Ryan Jarway

0 25 50 100 Feet