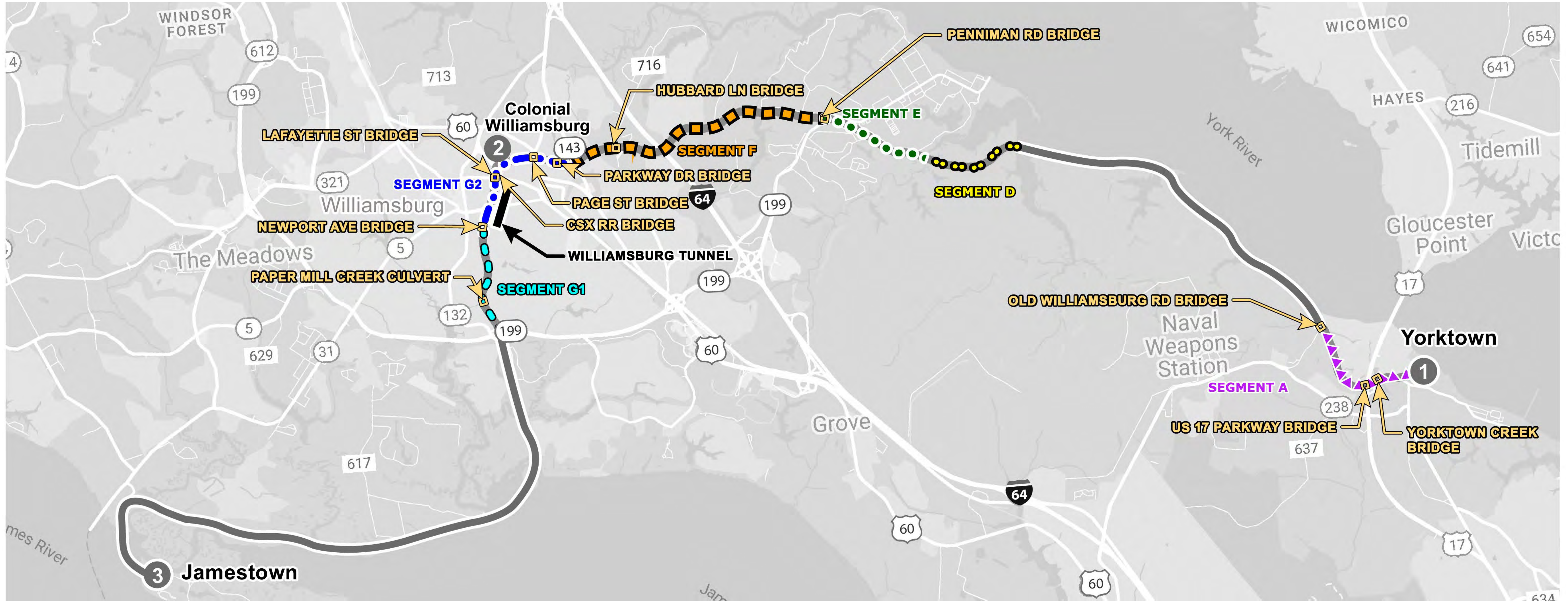


# WELCOME

## Colonial Parkway Rehabilitation Public Meeting

## Location Map



**LEGEND:**

SYMBOL	SEGMENT	SEGMENT DISTANCE	ANTICIPATED TIMEFRAME
▲▲▲▲▲	A	YORKTOWN TO FUSILIERS REDOUBT RAMP	SUMMER 2023 TO SUMMER 2025
●●●●●	D	FELGATES CREEK TO KING CREEK	SPRING 2024 TO WINTER 2024
●●●●●	E	KING CREEK TO PENNIMAN ROAD	SPRING 2024 TO WINTER 2024
■ ■ ■ ■ ■	F	PENNIMAN ROAD TO PARKWAY DRIVE	FALL 2024 TO JUNE 2026
●●●●●	G1	ROUTE 199 TO NEWPORT AVENUE	SUMMER 2023 TO SUMMER 2025
●●●●●	G2	NEWPORT AVENUE TO PARKWAY DRIVE	SUMMER 2023 TO WINTER 2025
—	TUNNEL REHABILITATION LOCATION		
□	BRIDGE REHABILITATION LOCATIONS		
#	VISITOR CENTERS		





## Construction Schedule

Symbol	Construction/Project Milestones	Anticipated Construction Timeframe and Parkway Closure
	Segment A – Yorktown to Fusiliers Ramp	Summer 2023 to Summer 2025
	Segment D – Felgates Creek to King Creek	Spring 2024 to Winter 2024
	Segment E – King Creek to Penniman Road	Spring 2024 to Winter 2024
	Segment F – Penniman Road to Parkway Drive	Winter 2024 to June 30, 2026
	Segment G – Parkway Drive to Route 199	Summer 2023 to October 31, 2025
	Segment G1: Route 199 to Newport Avenue	Summer 2023 to Summer 2025
	Segment G2: Newport Avenue to Parkway Drive	Summer 2024 to October 31, 2025

Note: Various Colonial Parkway segments or portions of a segment may open earlier than shown if completion of construction progresses quicker than expected.



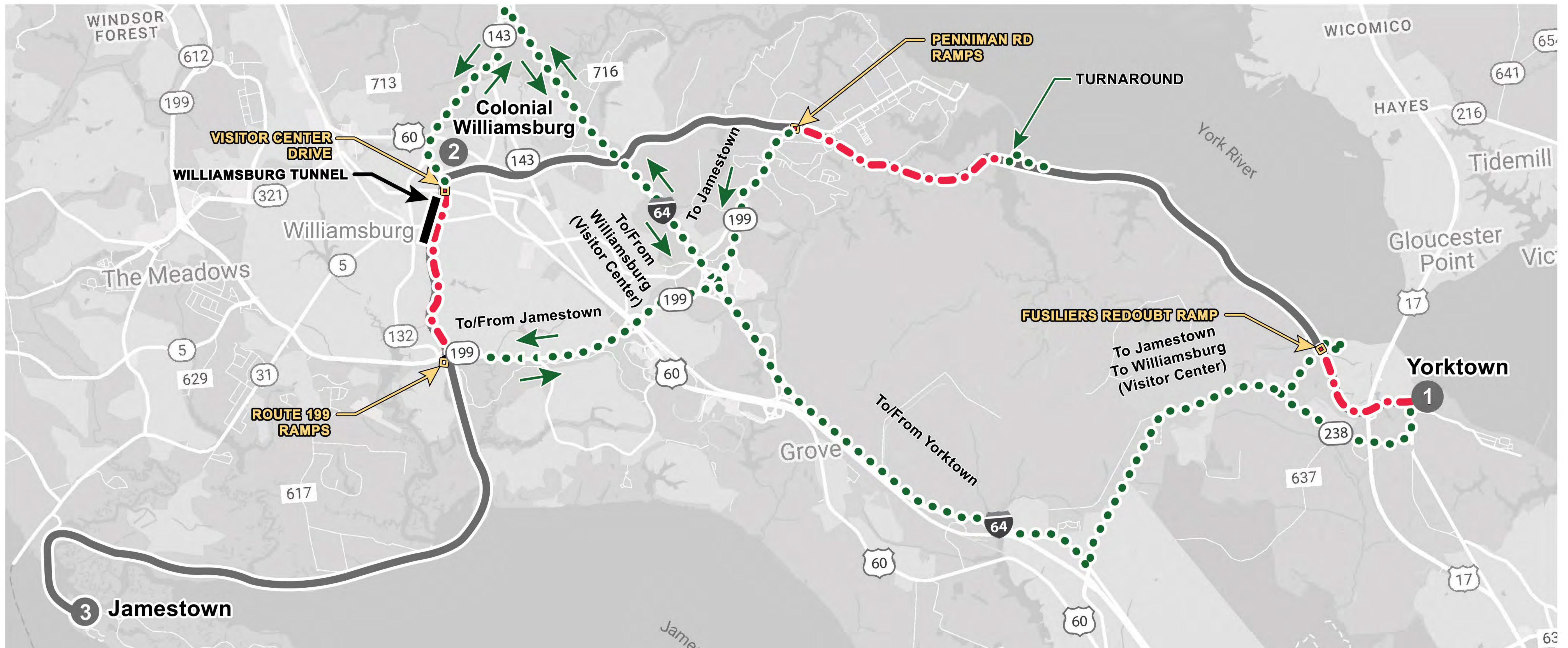
## Parkway Closure Schedule

Symbol	Parkway Closure Schedule	2024				2025			2026		
		Summer	Fall	Winter	Spring	Summer	Fall	Winter	Spring	Summer	Fall
	Segment A										
	Segment D										
	Segment E										
	Segment F										
Segment G											
	Segment G1: Route 199 to Newport Avenue										
	Segment G2: Newport Avenue to Parkway Drive										




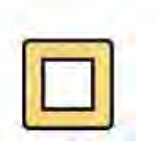

Note: Various Colonial Parkway segments or portions of a segment may open earlier than shown if completion of construction progresses quicker than expected.

## Detour Phase 2

Spring 2024 to Fall 2024



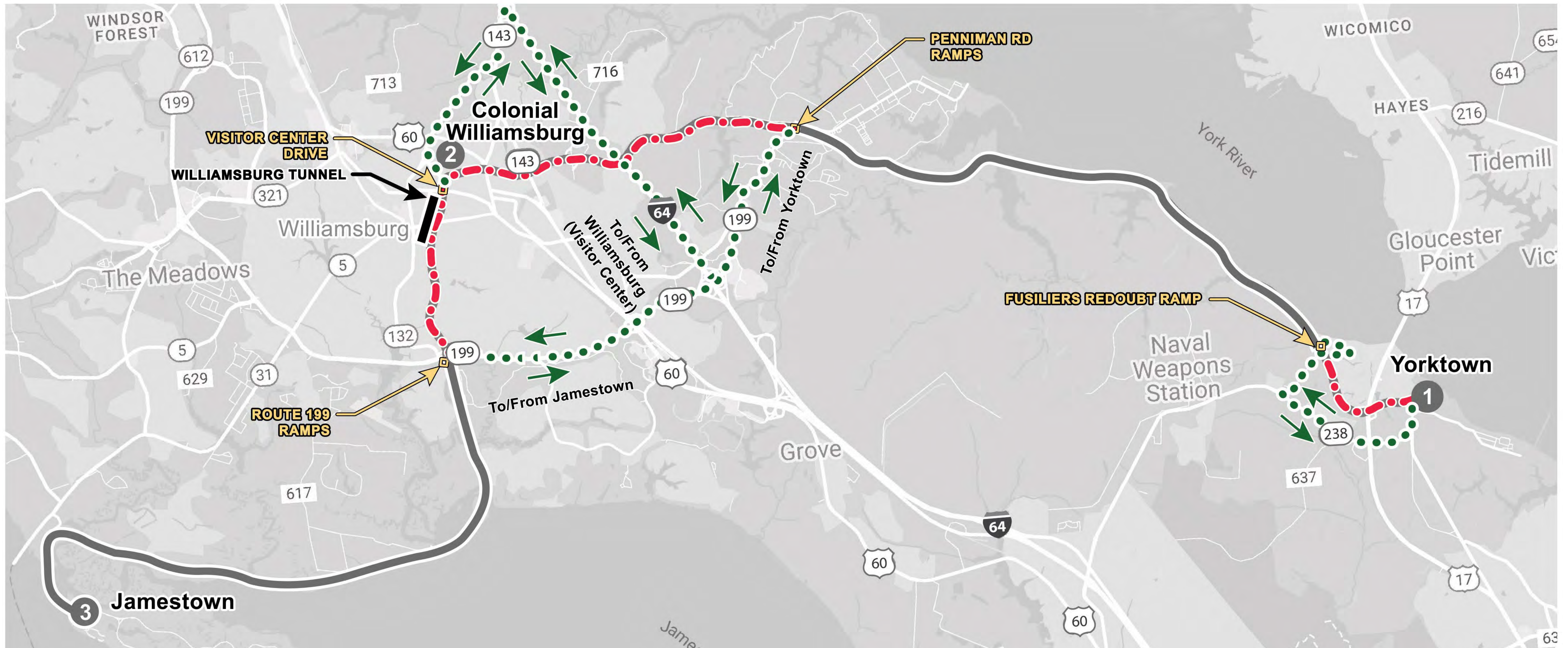
**LEGEND:**

SYMBOL	DESCRIPTION
	<b>PARKWAY CLOSURE</b>
	<b>PHASE 2 DETOUR ROUTE</b>
	<b>TUNNEL REHABILITATION</b>
	<b>DETOUR START/END LOCATIONS</b>
	<b>VISITOR CENTERS</b>



## Detour Phase 3

Fall 2024 to Summer 2026



**LEGEND:**

SYMBOL	DESCRIPTION
	<b>PARKWAY CLOSURE</b>
	<b>PHASE 3 DETOUR ROUTE</b>
	<b>TUNNEL REHABILITATION</b>
	<b>DETOUR START/END LOCATIONS</b>
	<b>VISITOR CENTERS</b>

Note: Various Colonial Parkway segments or portions of a segment may open earlier than shown if completion of construction progresses quicker than expected.



## Contact Us:



**For more information, please visit:**

<https://www.nps.gov/colo/planyourvisit/colo-parkway-rehab.htm>



**Email:**

**COLO\_Parkway\_Rehab@nps.gov**