



National Park Service
U.S. Department of the Interior

Channel Islands
National Park

1901 Spinnaker Drive
Ventura, CA 93001
www.nps.gov/chis

Superintendent's Compendium
Of Designations, Closures, Permit
Requirements and Other Restrictions
Imposed Under Discretionary Authority.

805 658-5700 phone
805 685-5799 fax

Approved:

Date:

Ethan McKinley
Superintendent

Feb. 29, 2024

In accordance with regulations and the delegated authority provided in Title 36, Code of Federal Regulations ("36 CFR"), Chapter 1, Parts 1-7, authorized by Title 54 United States Code, Section 100751, the following provisions apply to all lands and waters administered by the National Park Service, within the boundaries of Channel Islands National Park. Unless otherwise stated, these regulatory provisions apply in addition to the requirements contained in 36 CFR, Chapter 1, Parts 1-7.

Written determinations, which explain the reasoning behind the Superintendent's use of discretionary authority, as required by Section 1.5(c), appear in this document identified by italicized print.

36 CFR §1.2 –APPLICATION AND SCOPE

The National Park Service has the authorization and intent to enforce the following parts and sections of the Code of Federal Regulations, Title 36, on lands that The Nature Conservancy owns within the boundaries of Channel Islands National Park:

- § 1.5 Closures and Public Use Limits
- § 2.1 Preservation of natural, cultural and archeological resources
- § 2.2 Wildlife protection
- § 2.4 Weapons, traps and nets
- § 2.10 Camping and food storage
- § 2.13 Fires
- § 2.14 Sanitation and refuse
- § 2.15 Pets
- § 2.17 Aircraft and air delivery
- § 2.21 Smoking
- § 2.22 Property
- § 2.30 Misappropriation of property and services
- § 2.31 Trespassing, tampering and vandalism
- § 2.32 Interfering with agency functions
- § 2.34 Disorderly conduct
- § 2.35 Alcoholic beverages and controlled substances
- § 2.38 Explosives

These regulations are being enforced on private lands owned by The Nature Conservancy at the request of the landowner under a written instrument.

36 CFR §1.5 – VISITING HOURS, PUBLIC USE LIMIT, CLOSURES, AND AREA DESIGNATIONS FOR SPECIFIC USE OR ACTIVITIES.

(a)(1) - The following visiting hours, public use limits, and closures are established:

VISITING HOURS:

- The park visitor center at 1901 Spinnaker Drive in Ventura is closed on Thanksgiving Day and Christmas Day. The rest of the year it is open to the public from 8:30 a.m. to 5:00 p.m. daily.
- San Miguel Island is only open to the public when NPS Personnel are on the island. *San Miguel Island is owned by the U.S. Navy which has established this requirement.*

PUBLIC USE LIMITS:

Maximum island day use arriving with concessioners is as follows:

Location	Daily limit	At one time	Campers	One month	Other Conditions
East Anacapa	200	100	30 (included in the one time limit)		
West Anacapa - Frenchy's		75		600	groups >30 must be supervised by NPS-led or approved group
Santa Cruz - Scorpion	250		240 (not included in Daily)		
Santa Cruz - Prisoners		100	16 (Rancho del Norte)		Campers not included in at one time limits
Santa Rosa	500		125 (included in daily)		
San Miguel	75		30 (not included in daily)		
Santa Barbara	100		30 (not included in daily)		

Total public use is limited to the day use or at one time limit plus the campground limit. Private boaters represent a small portion of visitors ashore and are not counted towards the public use limit.

The following limits also apply:

- Campers may reserve a maximum of 2 individual sites per visit.
- At Scorpion, more than 12 campers constitute a group and must use a group campsite.
- A group may reserve a maximum of 3 groups sites at Scorpion
- Groups of campers greater than 45 persons require a Special Use Permit.

Public use limits are established through the General Management Plan process to prevent overuse and to ensure the quality of visitor experience.

CLOSURES:**Parkwide:**

- **Mooring of vessels:**
Mooring of any vessels to buoys, piers, docks, shoreline areas or offshore rocks is prohibited.
The piers and docks must be kept open to ensure safe access for embarking and disembarking passengers. The moorings must remain available for official vessels.
- **Use of Unmanned Aircraft:**
Launching, landing or operating an unmanned aircraft from or on lands and waters administered by the National Park Service within the boundaries of Channel Islands National Park is prohibited except as approved in writing by the Park Superintendent.
Definition: The term "unmanned aircraft" means a device that is used or intended to be used for flight in the air without the possibility of direct human intervention from within or on the device, and the associated operational elements and components that are required for the pilot or system operator in command to operate or control the device (such as cameras, sensors, communication links). This term includes all types of devices that meet this definition (e.g. model

airplanes, quad-copters, and drones) that are used for any purpose, including recreation or commerce.

Unmanned aircraft affects park resources, staff, and visitors in ways that the National Park Service has yet to identify and analyze. It is the National Park Service policy to not allow a new park use until a full determination has been made that it will not result in unacceptable impacts on park resources and values.

- **Rocks & Islets:**

All rocks and islets within the national park boundary are closed. These areas include, but are not limited to: Castle Rock, Hare Rock, Prince Island, Arch Rock, Diablo Rocks, Scorpion Rock, Willows Anchorage Rocks, Gull Island, Shag Rock and Sutil Island.

Rocks and islets are essential habitat for nesting and roosting seabirds and/or pinnipeds. Public access may cause disturbance, mortality and abandonment.

- **Caves & Rock Shelters:**

Due to the sensitive, and sometimes dangerous nature, public presence, use and access to caves and rock shelters is prohibited without a valid permit authorized by the Superintendent explicitly authorizing use of a cave or rock shelters.

This restriction is necessary to protect sensitive cultural resources, sensitive lifeforms, and fragile environment within caves and rock shelters.

- **Park Roads:**

Park Roads are closed to private motor vehicle use except for the following activities:

- Use reserved under rights of use and occupancy.
- Use in accordance with deeded easements.
- Use under special use permit authorizations.
- Use under concessions contracts or permits.

The islands are inherently separate from mainland vehicle traffic. Closure to private vehicle use preserves the inherent character of the islands. The administrative traffic which is permitted is the minimum necessary for the management of the islands. Additionally, the island road systems are not engineered to be safely navigated by those without local knowledge of the islands.

- **Swimming:**

Piers and landings are closed to swimming and wading when vessels are actively loading or unloading passengers or supplies on the islands.

This restriction is required to prevent injuries.

- **Bicycle Use:**

Park Roads are closed to bicycle use, including e-bikes

Closure to bicycles is similar to the rationale for closure to motor vehicles.

Additionally, park roads are not designed or maintained with bicycle use in mind.

The roads are for administrative use only. Many are being phased out.

- **Restriction to Trail System:**

Visitors must remain on the established trail systems on Anacapa, San Miguel and Santa Barbara Islands, and areas of Santa Rosa Island further explained below.

During heavy rains, certain sections of the trail systems on these islands may be temporarily closed at the discretion of the Superintendent.

Restricting use to the trail systems on Anacapa, San Miguel and Santa Barbara is required to prevent disturbance to wildlife, to protect native and endemic plants, to reduce the spread of alien plants, and for visitor safety. Due to the recent ranching episodes on Santa Cruz and Santa Rosa, restrictions to trails are not deemed necessary in most areas. Closure of some trails following rains is needed to prevent damage to the tread and damage to areas adjacent to the trail as hikers would walk alongside the trail to avoid the mud. Likewise, closure in other areas defined below is necessary to protect resources in the immediate area.

- **Protection of Visitors, Employees, Partners, and Others During a Pandemic:**

When the COVID-19 Community Level is **LOW** or **MEDIUM** in the county or all the counties where the park is located based on data provided by the Centers for Disease Control and Prevention (CDC), individuals are not required to wear masks.

When the COVID-19 Community Level is **HIGH** in the county or all the counties where the park is located based on data provided by the CDC, all individuals over the age of two must wear masks, regardless of vaccination status, in all common areas and shared workspaces in buildings owned, leased, or otherwise controlled by the National Park Service, including, but not limited to, park visitor centers, administrative offices, lodges, gift shops and restaurants.

When the COVID-19 Community Level is **HIGH** in one or more, but not all, of the counties where the park is located based on data provided by the CDC, the superintendent will determine whether individuals are required to wear masks. The requirement, if any, will apply to all facilities within the park.

Masks must cover the nose and mouth and fit snugly around the nose and chin with no large gaps around the sides of the face. Masks not designed to be protective, masks with ventilation valves, and face shields do not meet the requirement.

Regardless of the COVID-19 Community Level, individuals may wear masks if they choose to do so. Where a state, local, tribal, or territorial government where the park is located imposes more protective mask-wearing requirements than those indicated by the COVID-19 Community Level, individuals must follow those more protective requirements within the park. More protective state, local, tribal, or territorial mask-wearing requirements are hereby adopted as federal requirements in all units of the National Park System located within that state, locality, area subject to a federally recognized Indian tribe's regulatory jurisdiction, or territory, regardless of a particular park's jurisdictional status.

Additionally, all individuals must wear masks in or on public transportation conveyances and transportation hubs/facilities, to the extent required by current orders or directives issued by the CDC, the Transportation Security Administration (TSA), or other federal agencies with jurisdiction over those conveyances or areas. As of March 4, 2022, CDC and TSA orders or directives require all individuals regardless of vaccination status to wear masks in indoor areas of all forms of public transportation conveyances, including busses, trains, and boats/ferries, and in the indoor premises of transportation hubs/facilities. Individuals are not required to wear masks while outdoors on conveyances or while outdoors on the premises of transportation hubs/facilities.

Specific Islands and Area Closures

- **Santa Barbara Island:**

The shoreline, cliffs and beaches of Santa Barbara Island are closed to landing and public access except at the landing cove below the ranger station.

The shoreline of Santa Barbara Island serves as a rookery and haul out for seals and sea lions. Public access could cause disturbance, abandonment and mortality.

Sections of trail may be temporarily closed on a seasonal basis to protect nesting seabirds.

California brown pelicans and western gulls nest in areas near some sections of trail. This area is critical nesting habitat. In order to assure nesting success, some trail sections must be closed seasonally.

- **Anacapa Island:**

Lighthouse: On east Anacapa Island, the area east of a north/south line drawn 100 ft. west of the lighthouse is closed. The trail to the lighthouse is posted with a closure sign. The area is delineated on Map of Anacapa Island (Attachment B).

Due to concerns for seabirds that nest and roost in the area of the lighthouse, the area is not open for general access. Park rangers may escort visitors to tour the lighthouse based on criteria established to prevent disturbance.

Middle Anacapa Island is closed, except for beaches.

All areas except for exposed beaches are closed to protect nesting seabirds and because the steep cliffs are unsafe for climbing.

West Anacapa Island is closed, except for beach areas other than the beach at Frenchy's Cove. The beach at Frenchy's Cove is contained within the boundary of the state pelican closure.

All areas except for exposed beaches (other than Frenchy's Cove) are closed to protect nesting seabirds and because the steep cliffs are unsafe for climbing.

- **Santa Cruz Island:**

The shoreline between Arch Point (northwest of Scorpion Anchorage) and the east boundary of Potato Harbor is closed to landing (see Attachment J).

Sea birds nest in this area and this closure protects their nests.

The "Blue Site" and access road are closed to entry. This former military site is on the south bluff of Santa Cruz Island immediately west of the Navy installation. The closure is that area within a 120 meter radius of a point centered at 33.9932°N, 119.637°W. (See Attachment G)

The Blue Site is infested with non-native Argentine Ants. Entry is prohibited in order to ensure that the non-native ants are not transported to un-infested locations on Santa Cruz Island.

- **Santa Rosa Island:**

Sandy Point: Sandy Point Area of Santa Rosa Island is closed. This includes all beaches and land areas 300 ft. inland from 0.75 miles north from the Sandy Point benchmark to 0.85 miles south from the Sandy Point benchmark (See Attachment E).

The Sandy Point area is a substantial harbor seal and elephant seal refuge, as well as habitat for seabirds. Public access could cause disturbance, abandonment and mortality.

Skunk Point: Travel in the Skunk Point area of Santa Rosa Island is restricted to foot travel on wet sand only. This restriction starts on the rocky bluff between Southeast

Anchorage across the ridge line then around to rocky outcropping which also marks the Southern Boundary of the Skunk Point Marine Reserve. (See Attachment F).

This closure is necessary to protect both threatened and endangered plants and animals. Skunk Point area is closed to protect breeding and nesting snowy plovers and the 1 endangered plant species Hoffman's slender-flowered gilia. The snowy plover is a threatened species. Skunk Point is one of its last strongholds. Public access could cause nesting failure and destruction of plants and their habitat.

China Camp: Travel between China Camp and Cluster Point is restricted to on-trail travel only, as indicated by signs on both sides. Travel off trail in this area is prohibited, except for the China Camp Cabin and Corral areas, located on the west side of the trail. Beach access to Cluster Point from the northwest is prohibited. (See Attachment N).

This area is closed to the visiting public to protect sensitive natural and cultural resources found within the area. Travel off trail in this area can result in irreparable damage.

Lobo Canyon: Travel is restricted to on trail only from the mouth of Lobo Canyon to Cow Canyon. This is further delineated in several locations with post and rope stanchions and signs. Travel off trail, beyond signs, or post and rope stanchions is prohibited. (See Attachment O).

This area is closed to the visiting public to protect sensitive natural and cultural resources found within the area. Travel off trail in this area can result in irreparable damage.

Beaches other than these specific beaches on Santa Rosa Island are open to public landing and use.

Main Ranch Area: The ranch buildings (Ranch House, Barns, and associated structures) at Bechers Bay are closed to public entry. Park visitors may explore the ranch grounds.

The interiors of these buildings are not preserved and maintained for safe public access. They still contain artifacts from the island's ranching history that would be vulnerable to disturbance or removal.

The buildings used by California State University Channel Islands are closed to visitor access.

California State University Channel Islands has a land assignment for these buildings under the terms of a Special Use Permit.

- **San Miguel Island:**

At Pt. Bennett all areas west of the research station or west of a line drawn from Anubis Point to Ferrelo Point are closed, except as allowed by permit. Area delineated on Map of San Miguel Island (Attachment D).

The Pt. Bennett area is the largest seal and sea lion rookery in the park. Public access could cause disturbance, abandonment and mortality. Permitted access is only approved for researchers authorized by the Superintendent.

San Miguel Island shoreline, cliffs and beaches are closed to landing except for the beach at Cuyler Harbor.

Most of the shoreline is used by various pinniped species. Public access could cause disturbance, abandonment and mortality. Additionally, this closure is consistent with the State regulations.

Without a park ranger escort, campers and other visitors on San Miguel Island are not allowed outside the unrestricted area. The unrestricted area is delineated on Map of San Miguel Island (Attachment C). The areas open to the public are the beach at Cuyler Harbor, Nidever Canyon trail, the Cabrillo Monument, campground, and the Lester Ranch site.

San Miguel Island is owned by the U.S. Navy. Under the terms of the Memorandum of Understanding which opened the island to public access, a ranger escort is required.

(a)(2) - The following areas are designated for a specific use or activity and/or the following conditions or restrictions are imposed on a specific use or activity:

- **San Miguel Island:**

To access San Miguel Island visitors must sign an “Acknowledgement of Danger: Release and Hold Harmless Agreement.” Researchers and other personnel who are working on the island and who are not U.S. Government employees must also sign the form.

San Miguel Island is owned by the U.S. Navy and was used as a range for bombing practice and missile testing. The Navy requires that persons sign this agreement in order to be granted access to San Miguel.

- **Sea Caves:**

Visitors exploring sea caves by boat may not set foot ashore inside those caves.

The ledges and cobble beaches inside sea caves are nesting habitat for seabirds and haul-out for marine mammals. Nests must be protected. Visitors entering sea caves by kayak or skiff and climbing ashore could easily crush the inconspicuous eggs, alter habitat or disrupt breeding efforts.

- **Materials That May Carry Invasive Species:**

The following types of items shall not be transported or delivered to any island within Channel Islands National Park:

- Live or Potted Plants
- Soil
- Cut Flowers
- Untreated or unfinished wood
- Corrugated boxes
- Tools or equipment with attached soil

The Channel Islands are unique for their isolation which makes them refuges from exotic species. In order to prevent the introduction of non-native species as is prohibited in 36 CFR 2.1(a)(2), the above listed high-risk vectors must not be brought to the islands. Less restrictive measures would have the potential for introduction of non-native species that could adversely affect many species and/or endanger island ecosystems.

- **Service Animals:**

Visitors that require service animals may bring trained service animals on park islands after submitting proof of required health background screening, required vaccinations and prophylactic treatment.

All domestic animals including service animals present a risk of introducing pathogens to the islands. Due to the inherent isolation of the islands, species there may not have immunity to diseases and parasites to which domestic animals have resistance. Service animals will be allowed with a permit when they have satisfied a protocol of vaccination, prophylactic treatment and

veterinary exam to decrease the risk of compromise to the health of island species.

36 CFR §1.6 – ACTIVITIES THAT REQUIRE A PERMIT

Activities requiring a permit are listed above under Public Use Limits and throughout this document under the specific 36 CFR Section that authorizes or requires the issuance of a permit. They include but are not limited to the following:

- §1.5(d) - The following activities related to Public Use Limits:
 - Access to closed areas.
- §2.4(d) - Carry or possess a loaded weapon, trap, or net.
- §2.5(a) - Specimen collection (Take plant, fish, wildlife, rocks or minerals).
- §2.10(a) - The following camping activities:
 - Camping at the campground on East Anacapa Island.
 - Camping at the campground at Scorpion on East Santa Cruz Island.
 - Camping at the campground at Del Norte on Santa Cruz Island.
 - Camping at the campground on Santa Barbara Island.
 - Camping at the campground on San Miguel Island.
 - Camping at the campground on Santa Rosa Island.
 - Beach camping on Santa Rosa Island.
 - Camping groups larger than 45 persons require a Special Use Permit.

See section 1.5(a)(1) for campground capacities and section 2.10 for specific camping regulations

- §2.12 - Audio disturbances:
 - (a)(2) Operating a chain saw in developed areas.
 - (a)(3) Operation of any type of portable motor or engine, or device powered by a portable motor or engine in non-developed areas.
 - (a)(4) Operation of a public address system in connection with a public gathering or special event for which a permit has been issued pursuant to §2.50 or §2.51.
- §2.17 - Aircraft and air delivery:
 - (a)(3) Delivery or retrieval of a person or object by parachute, helicopter or other airborne means.
 - (c)(1) Removal of a downed aircraft.
- §2.37 - Soliciting or demanding gifts, money goods or services.
(Pursuant to the terms and conditions of a permit issued under §2.50, §2.51 or §2.52)
- §2.38 - Explosives:
 - (a) Use, possess, store, transport explosives, blasting agents.
 - (b) Use or possess fireworks.
- §2.50(a) - Conduct a sports event, pageant, regatta, public spectator attraction, entertainment, ceremony, and similar events.
- §2.51(a) - Public assemblies, meetings, gatherings, demonstrations, parades and other public expressions of views by groups of more than 25 persons.

- §2.52(a) - Sale or distribution of printed matter that is not solely commercial advertising by groups of more than 25 persons.
- §2.60(b) - Livestock use.
- §2.61(a) - Residing on federal lands.
- §2.62 - Memorialization:
 - (a) Erection of monuments (Requires approval from the Director).
 - (b) Scattering ashes from human cremation.
- §5.1 - Advertisements
(Display, posting or distribution.)
- §5.3 - Engaging in or soliciting any business (requires a permit, contract or other written agreement with the United States, or must be pursuant to special regulations).
- §5.5 - Commercial Photography/Filming: Still photography of vehicles, or other articles of commerce or models for the purpose of commercial advertising.
- §5.6(c) - Use of commercial vehicles on park area roads.
(The superintendent shall issue a permit to access private lands within or adjacent to the park when access is otherwise not available)
- §5.7 - Construction of buildings, facilities, trails, roads, boat docks, path, structure, etc.
- §6.9(a) - Operation of a solid waste disposal site.

36 CFR §2.1 – PRESERVATION OF NATURAL, CULTURAL AND ARCHEOLOGICAL RESOURCES

(a)(5) - Walking on, climbing, entering, ascending, descending or traversing an archeological or cultural resource, monument, or statue is prohibited, except in the following areas and/or under the following conditions:

- Traversing on or through archeological sites is only permitted on established roads and trails.

(b) - Hiking or pedestrian traffic is restricted to the trail(s) or walkway(s) listed in 36 CFR §1.5 of this document.

- Visitors must remain on the established trail systems on Anacapa, San Miguel and Santa Barbara Islands. During heavy rains, certain sections of the trail systems on these islands may be temporarily closed at the discretion of the National Park Service.

36 CFR §2.3 – FISHING

(d)(4) - In accordance with federal statutory law, commercial fishing is authorized in the following areas, under the conditions noted:

- Pursuant to U.S. Supreme Court decision 436 U.S. 32 (1978), commercial fishing is allowed in park waters in accordance with State regulations.

36 CFR §2.5 – RESEARCH SPECIMENS

(a) - Taking plants, fish, wildlife, rocks, or minerals is prohibited except in accordance with other regulations of Chapter I of 36 CFR or pursuant to the terms and conditions of a specimen collection permit.

- Permits are required for the collection of research specimens.

36 CFR §2.10 – CAMPING and FOOD STORAGE

(a) - Camping is allowed in the following designated sites or areas and is subject to the following established conditions:

Campground	# of People	# of Sites	Persons/site
Anacapa Island	30	7	4 or 6
Santa Barbara Island	30	10	4
Santa Rosa Island	75	15	5
San Miguel Island	30	9	4
Santa Cruz Island-- Scorpion	240	25 individual 6 group	6 15
Santa Cruz Island – Del Norte	16	4	4

- Campers are required to obtain a permit from www.recreation.gov for all park campgrounds and beach camping on Santa Rosa Island.
- Camping is permitted only in designated campsites. Beach camping is permitted only on Santa Rosa Island and only with a beach camping permit.
- No person, party or organization shall be permitted to camp more than 14 consecutive days on any one island.
- See section 1.5 Public Use Limits for additional restrictions.

(b)(3) Camping within 25 feet of a fire hydrant or main road, or within 100 feet of a flowing stream, river or body of water is authorized only in the following areas, under the conditions noted:

- In designated campsites at island campgrounds.
- On Santa Rosa Island with a beach camping permit.

(d) Conditions for the storage of food are in effect, as noted, for the following areas:

- Where food storage lockers are provided all food and garbage must be secured in the lockers.

36 CFR 2.13 – FIRES

(a)(1) The lighting or maintaining of fires is prohibited.

(a)(2) The following restrictions are in effect for the use of stoves or lanterns:

- Only chemical fuel camp stoves may be used.
- Stoves may only be used for cooking and purposes.
- Stoves may only be used at designated campgrounds, authorized beach camps and picnic areas.

Due to the remote location, numerous sensitive natural and cultural resources, use of fire is limited to only to necessary use.

36 CFR §2.14 – SANITATION and REFUSE

(b) Conditions for the disposal, containerization, or carryout of human body waste have been established as follows:

- For beach camping, human waste must be containerized and disposed of at a proper facility.

36 CFR §2.15 – PETS

(a)(1) Possessing pets in public buildings, public transportation vehicles, swimming beaches, and the following structures and/or areas is prohibited:

- All park buildings.
- All park islands.

36 CFR §2.16 – HORSES AND PACK ANIMALS

(a) The use of horses or pack animals is prohibited outside of trails, routes, or areas designated for their use:

- There are no trails, routes or areas designated for use.

(b) Free-trailing or loose-herding of horses or pack animals on trails is prohibited.

36 CFR §2.21 – SMOKING

(a) The following portions of the park, buildings, structures or facilities are closed to smoking (including the use of e-cigarettes) as noted:

Buildings:

- The Mainland Visitor Center.
- All National Park Service owned structures, piers, docks, residences, garages, or similar enclosed buildings and facilities located on park islands.
- Smoking is not permitted within 25 feet of the preceding locations.
This restriction is required in order to protect the health of employees and visitors from exposure to nicotine and other toxic substances produced by tobacco and nicotine delivery systems.

Portions of the Park:

- The Islands.
- Exceptions allow smoking in the following designated areas:
 - Anacapa Island - the concrete area by the crane at the top of the stairs.
 - Santa Cruz Island - the beach areas at Scorpion, Smugglers & Prisoners.
 - Santa Rosa Island - the beach area at Bechers Bay.
 - San Miguel Island - the beach area at Cuyler Harbor.*Due to fire danger and the remoteness of the islands from fire suppression resources, smoking poses a danger to island resources.*

36 CFR §2.22 – PROPERTY

(a)(2) Property may be left unattended for periods longer than 24 hours in the following areas and under the following conditions:

- Under the terms of a concession contract, incidental business permit or other authorization that the Superintendent may issue for the proper management of the park.

36 CFR §2.50 – SPECIAL EVENTS

(a) Sports events, pageants, regattas, public spectator attractions, entertainments, ceremonies, and similar events are allowed, provided there is a meaningful association between the park area and the events, and the observance contributes to visitor understanding of the significance of the park area, and a permit therefor has been issued by the superintendent.

36 CFR §2.51 -- DEMONSTRATIONS

(b) Demonstrations of more than 25 people are allowed within park areas designated as available under paragraph (c)(2) when the superintendent has issued a permit for the activity.

- Demonstrations involving 25 persons or fewer may be held without a permit in designated park areas, provided that the requirements in §2.51(b) are met. The 25-person maximum for the small group permit exception may be reduced pursuant to §2.51(b)(3).

(c)(2) The following locations are designated as available for demonstrations:

- Attachment A - In front of Park Headquarters by park sign
- Attachment B - Anacapa Island by the crane
- Attachment H - Santa Cruz Island outer southeast corner of the Gherini compound
- Attachment I - Santa Rosa Island at the road junction between the head of the pier and the old Ranch Foreman's House
- Attachment K - San Miguel Island on the beach at Cuyler Harbor
- Attachment L - Prisoners Harbor near the visitor wayside
- Attachment M - Santa Barbara Island at the helicopter landing zone in the campground (if available)

36 CFR §2.52 -- SALE OR DISTRIBUTION OF PRINTED MATTER

(b) The sale or distribution of printed matter by more than 25 persons is allowed within park areas designated as available under §2.51(c)(2) (see above) when the superintendent has issued a permit.

- Sale or distribution activity by 25 persons or fewer may be conducted without a permit in designated park areas, provided that the requirements in §2.52(b) are met. The 25-person maximum for the small group permit exception may be reduced for a designated available area, pursuant to §2.52(b)(3).

36 CFR §2.62 – MEMORIALIZATION

(b) The scattering of human ashes from cremation is prohibited, except pursuant to the terms and conditions of a permit, or in the following areas and according to the following conditions:

- The remains to be scattered must be cremated and pulverized, as outlined by California law.
- The scattering of remains over park waters are subject to 40 CFR § 229.1 - Burial at sea.

36 CFR §3.12 – USING A VESSEL TO TOW A PERSON

(a) The towing of a person by a vessel is allowed only in the designated areas and in accordance with the following conditions listed in 36 CFR §1.5 of this document.

- Park waters open for boating activities are open to the towing of persons on the water by vessels.

36 CFR §3.19 – USE OF SUBMERSIBLES

The use of manned or unmanned submersibles may only occur in accordance with a permit issued by the superintendent.

36 CFR §4.10 – TRAVEL ON PARK ROADS AND ROUTES

(a) Park roads closed to motor vehicles are those indicated below:

- As indicated in section 1.5, the islands are closed to private motor vehicle use.

36 CFR §4.30 – BICYCLES

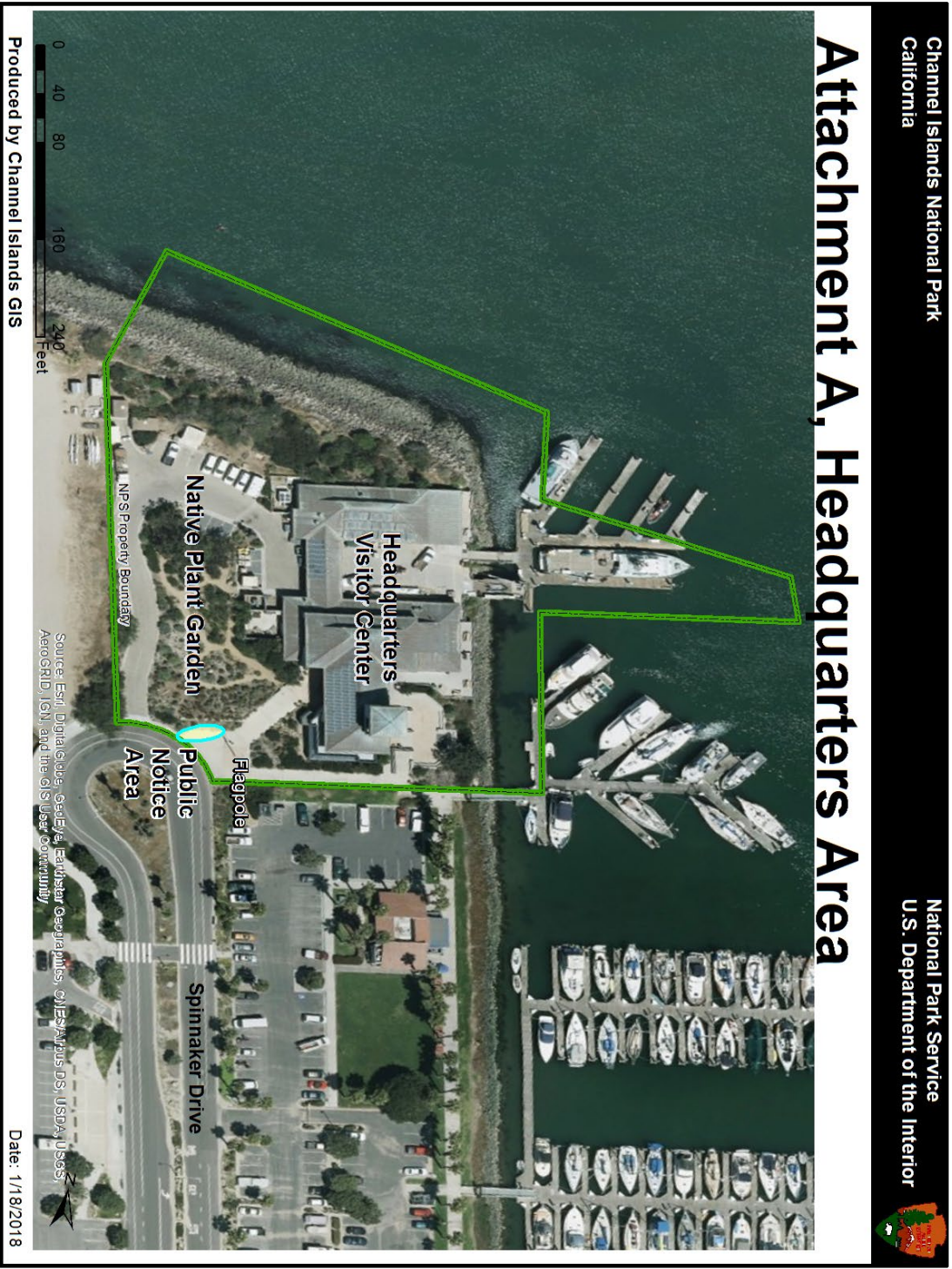
(a) Park roads and parking areas are closed to bicycle use as indicated in section 1.5 of this document. As a result, there are no established routes for bicycle use. This includes the use of e-bikes.

36 CFR §5.5 – COMMERCIAL PHOTOGRAPHY

(a) Taking photographs of any vehicle or other articles of commerce or models for the purpose of commercial advertising without a written permit from the Superintendent is prohibited.

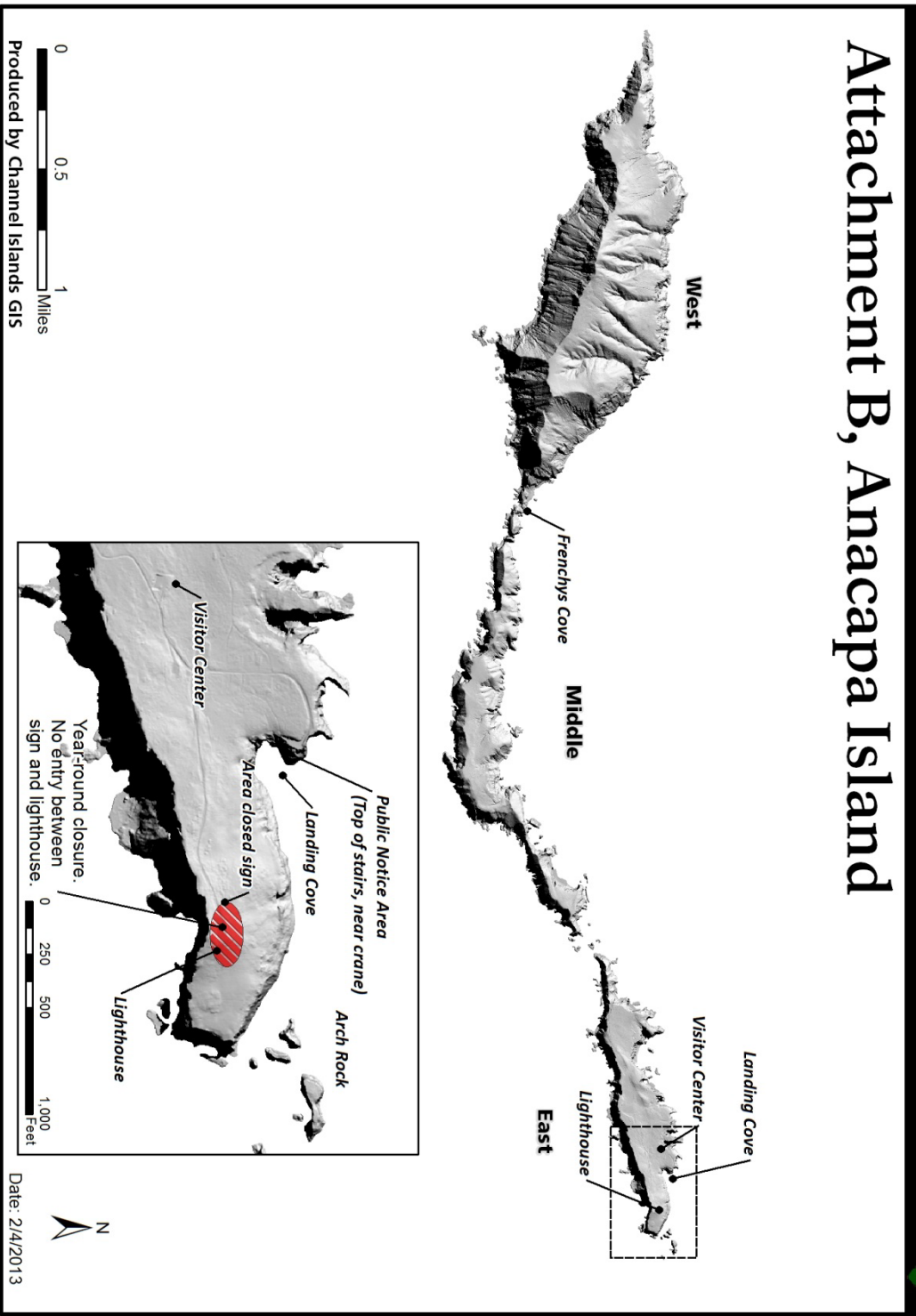
36 CFR §7.84 SPECIAL REGULATIONS

- The special regulations in 36 CFR §7.84 were nullified by U.S. Supreme Court Decision 436 U.S. 32 (1978).





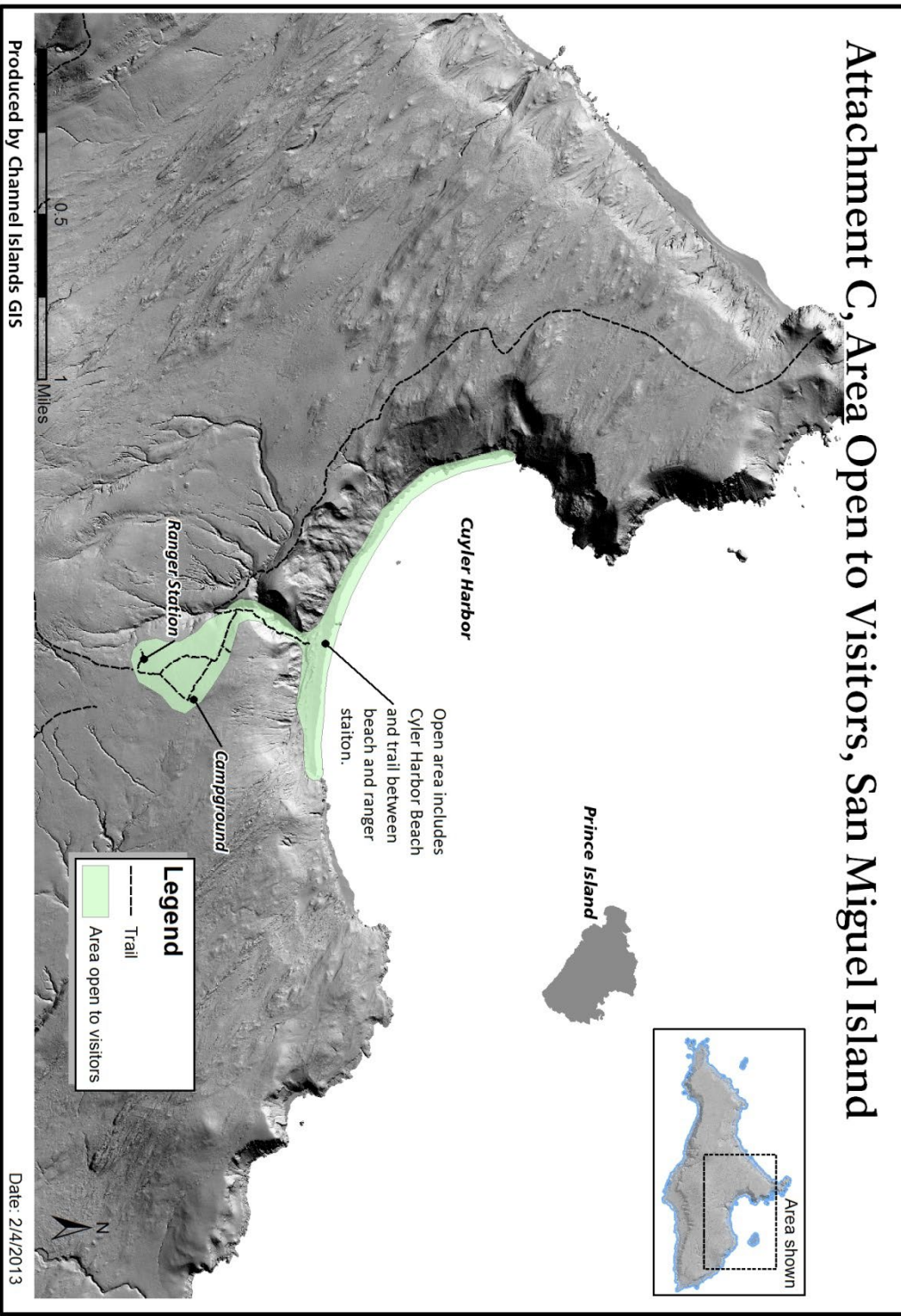
Attachment B, Anacapa Island



Path: H:\Shared\Finished\Mapslap_mxd\Superintendent's Compendium of Closures\Attachment B - ANI.mxd

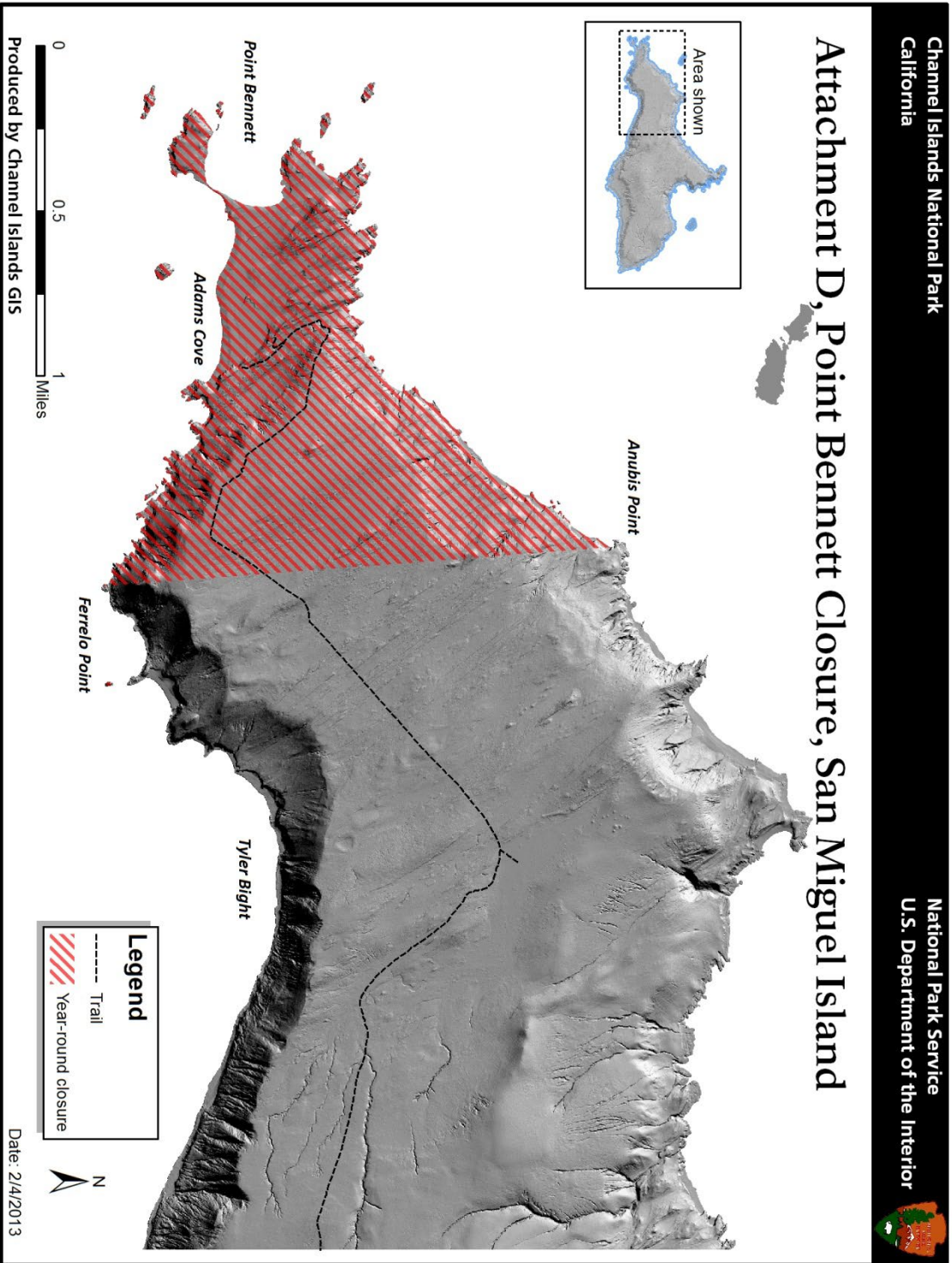


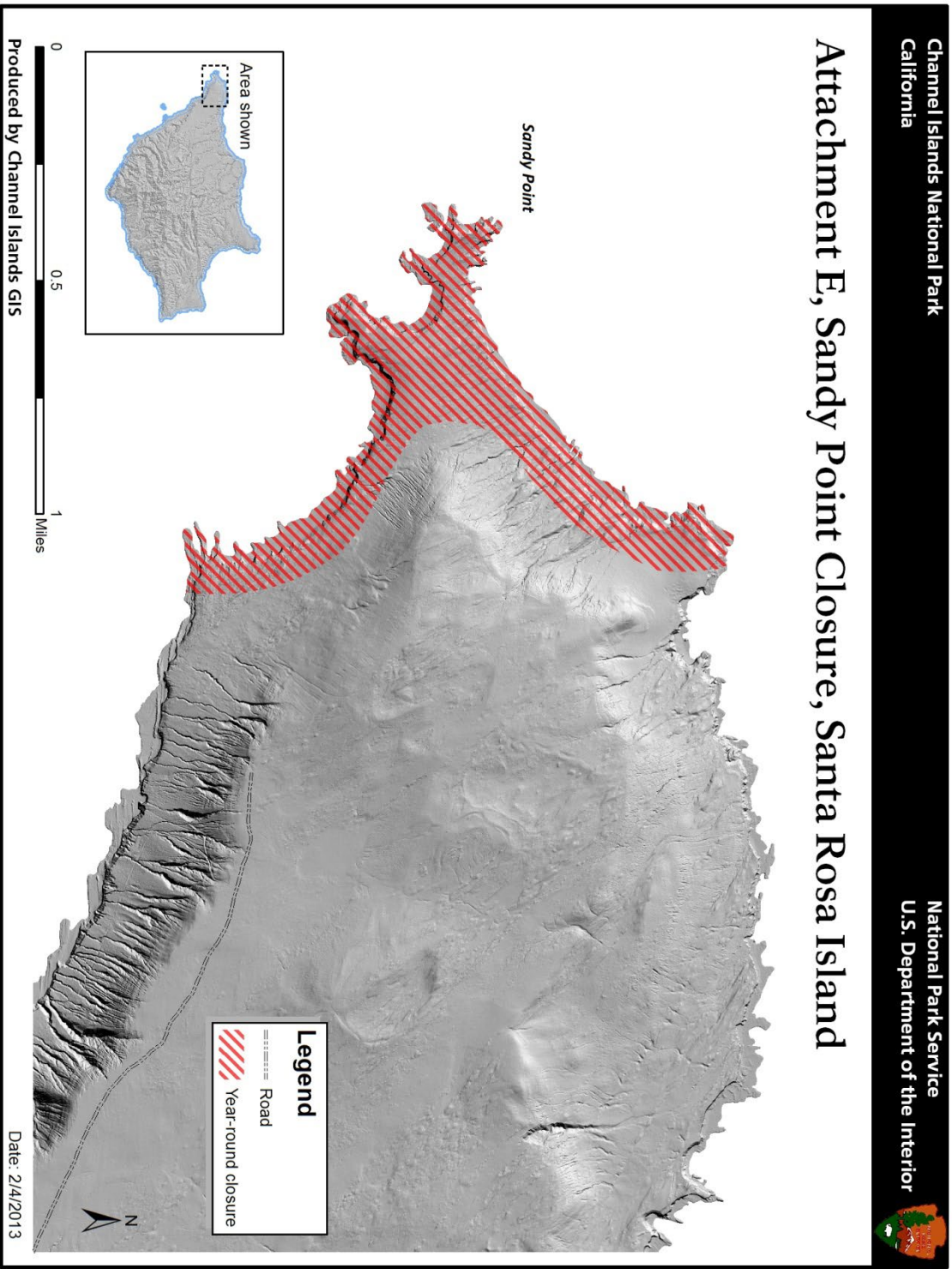
Attachment C, Area Open to Visitors, San Miguel Island



Produced by Channel Islands GIS
Path: H:\Shared\FinishedMaps\lap_mxd\Superintendent's Compendium of Closures\Attachment C - SMI.mxd

Date: 2/4/2013



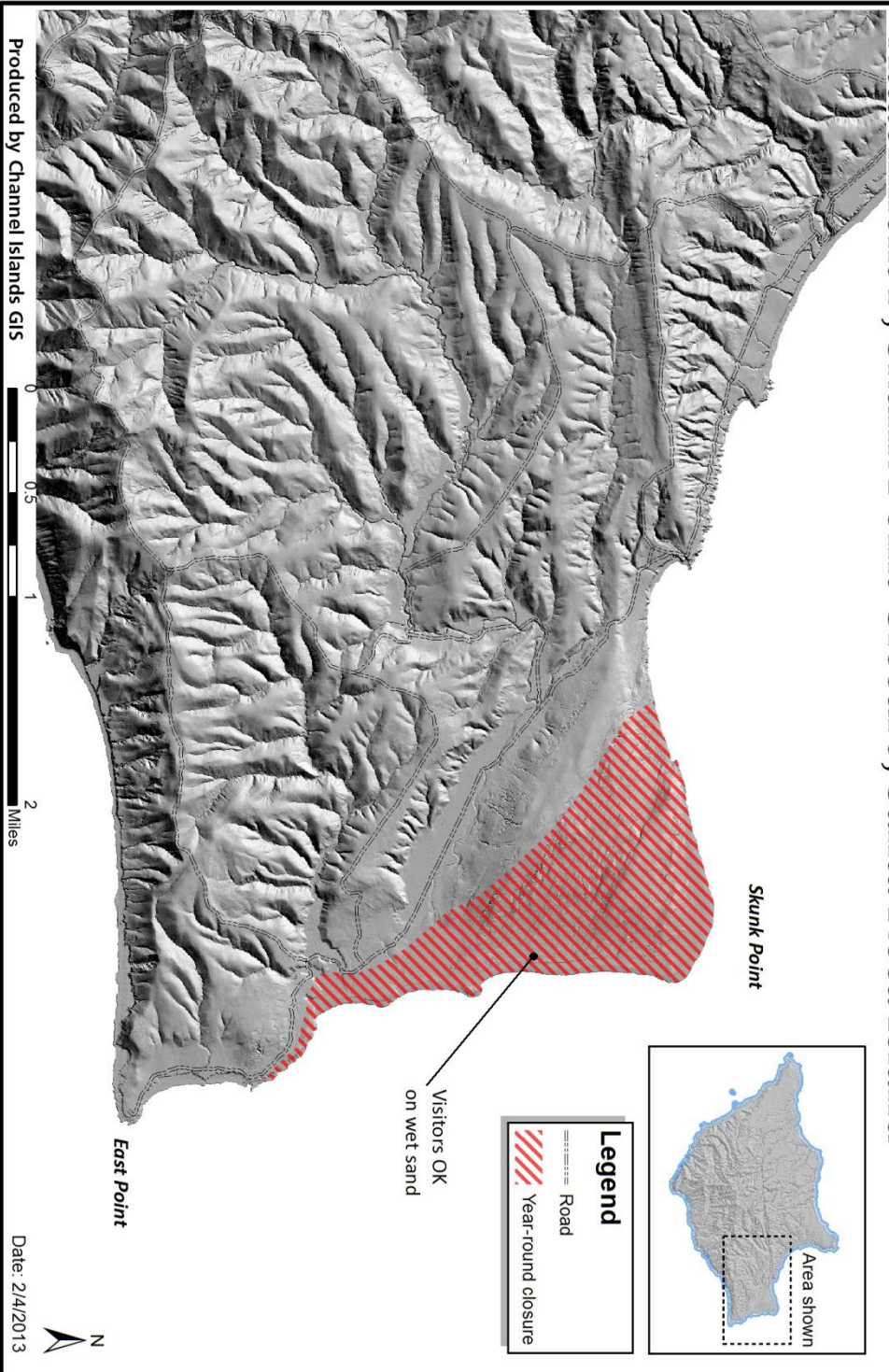


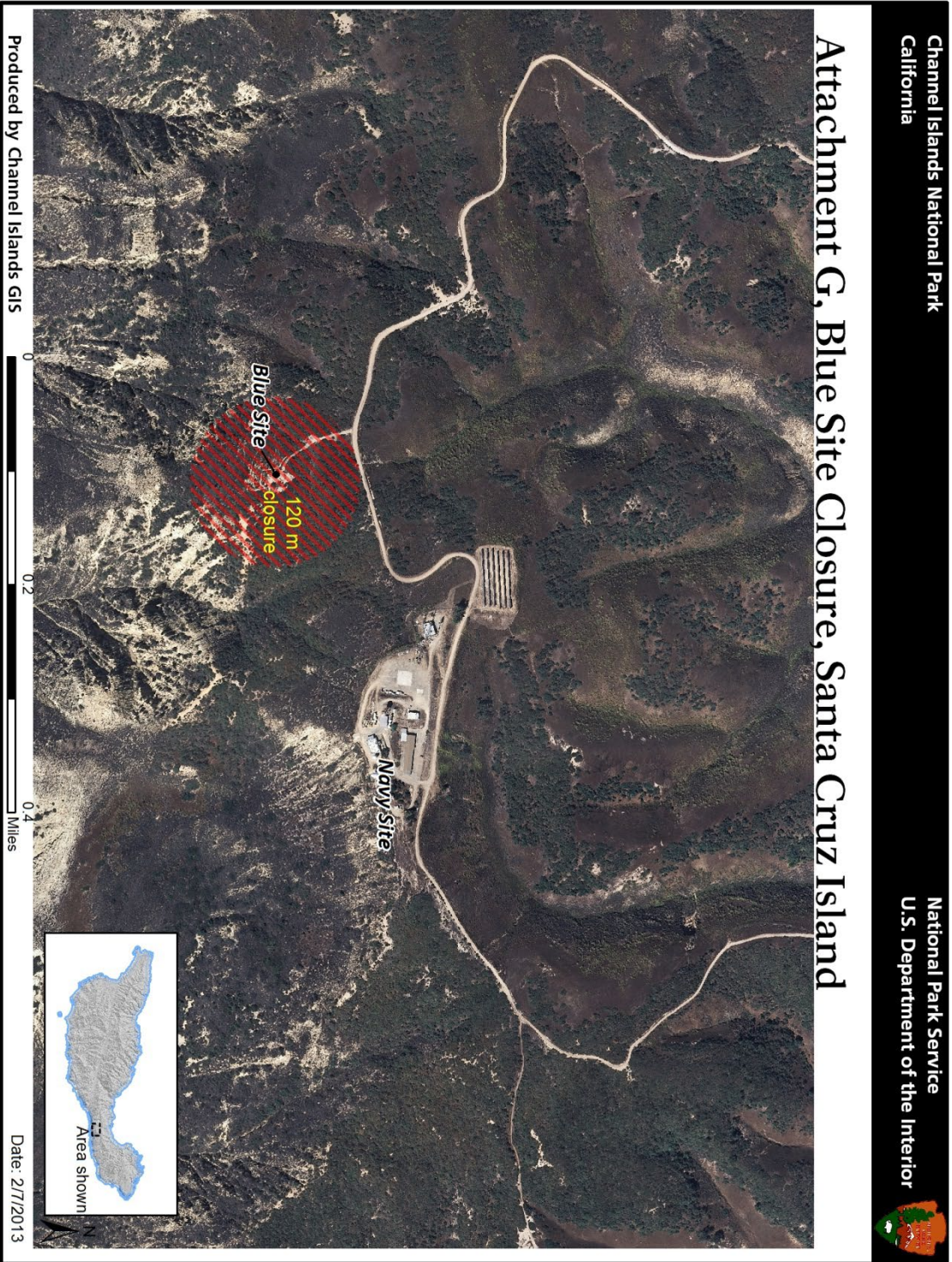
Channel Islands National Park
California

National Park Service
U.S. Department of the Interior



Attachment F, Skunk Point Closure, Santa Rosa Island



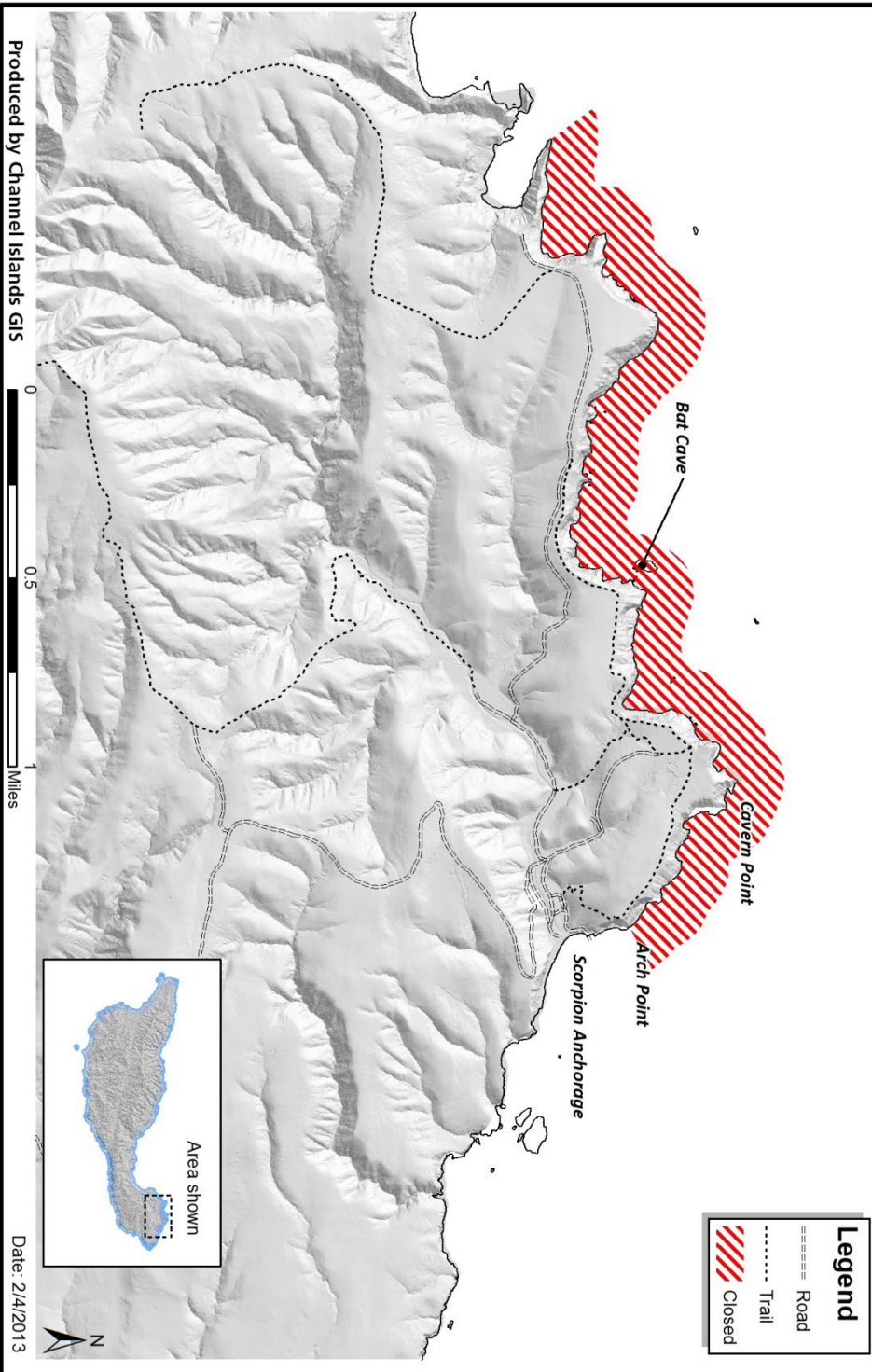




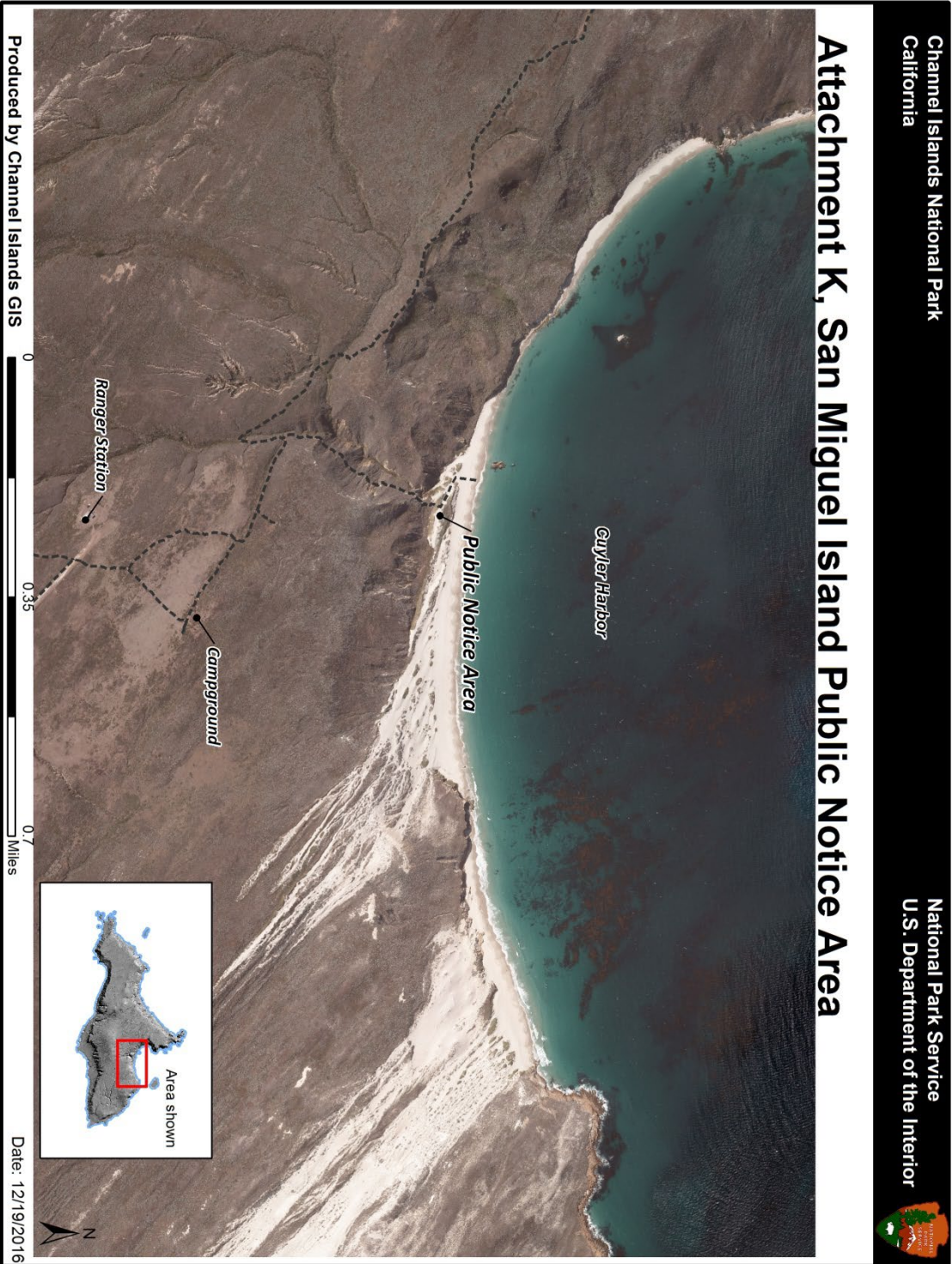




Attachment J, Bat Cave Closure, Santa Cruz Island



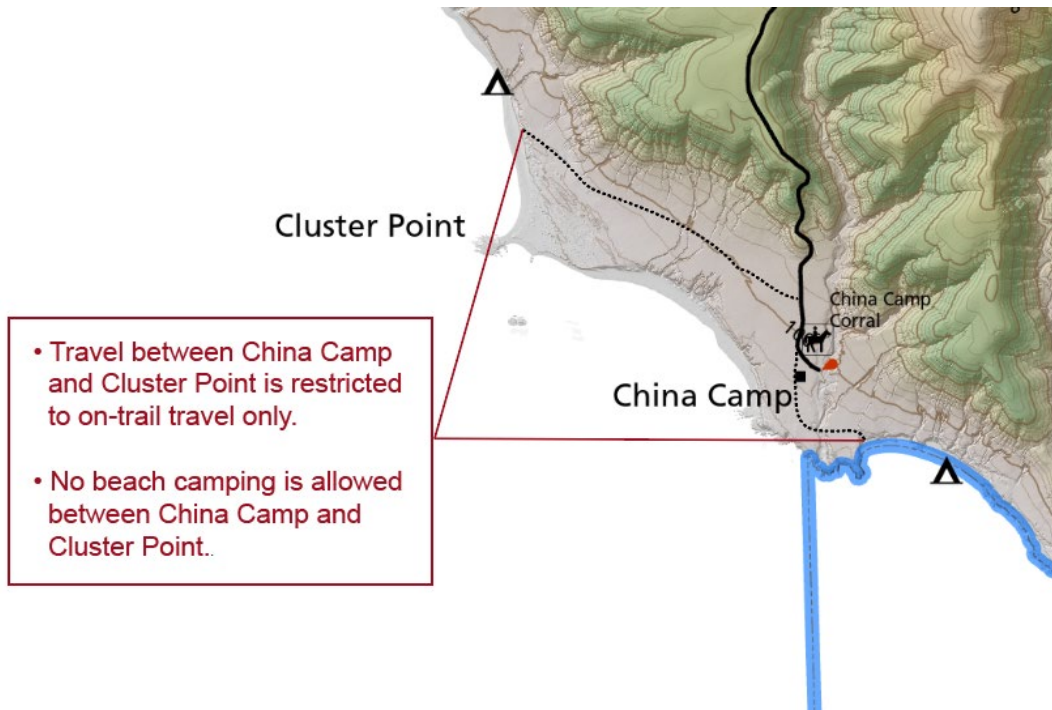
Produced by Channel Islands GIS
Path: H:\Shared\Finished\Mapslap_mxd\Superintendent's Compendium of Closures\Attachment J - SCI Bat Cave.mxd







Attachment N, On-trail Travel Restriction near Cluster Point and China Camp



Attachment O, On-trail Travel Restriction near Lobo and Cow Canyons

