

**Big South Fork  
National River & Recreation Area**

National Park Service  
U.S. Department of the Interior  
[www.nps.gov/biso](http://www.nps.gov/biso)



# Decoration Day



# Cemetery Quest 2026

Name: \_\_\_\_\_  
Address: \_\_\_\_\_  
Email: \_\_\_\_\_

## Welcome To The 2026 Decoration Day Cemetery Quest

This event is designed to connect each participant to a small part of the human history of the Cumberland Plateau. During this quest you will visit several historic communities within the Tennessee and Kentucky region of Big South Fork National River and Recreation Area. Within these places are cemeteries where the people who called these places home are laid to rest.

The Cemetery Quest can be completed in the order presented in the book, or in any arrangement that is easiest for you. Complete the booklet by May 31 to receive the 2026 Cemetery Quest Challenge Patch. While visiting the Cemetery Quest locations, take advantage of the opportunity to collect points toward the GO BIG 2026 Challenge. Earn 10 points for completing the quest, plus 5 bonus points for collecting one bag of trash during your adventure; however, do not take anything from the graves in the cemeteries. If you finish the Cemetery Quest before 4:00 PM (ET) on May 2, you will receive an extra 10 points. You can also earn an additional 10 points by visiting the optional George Boyatt Graves in Kentucky.

Note: names in **bold** are specific people to look for in each cemetery.



The Watson family decorating graves near Big South Fork, circa 1952.

Source: Effie Houston

## What Is Decoration Day?

Cemeteries contain stories hidden behind tablets of stone. In Big South Fork National River and Recreation Area, cemeteries serve as a reminder of the people who called this rugged and beautiful land home. Beginning in late spring, people journey to cemeteries throughout the mountains to celebrate Decoration Day. Annie Troxell, who was interviewed as part of the Big South Fork Oral History Project in the 1970s, gave vivid descriptions of Decoration Day services around 1900 that are still carried on today.

*“Generally, they’d go to the graveyards, and most times they’d have preaching and singing and decorate the graves (with flowers). We used to buy this crepe paper to make our flowers but now here of late years they buy these other flowers. Then we’d come back to the house to set the tables to have dinner. Made a big long table out in the yard (a)nd I saw that settin’ full... (with) all kinds of food. I have knowed of as high as almost a hundred people being there. They’d come almost all the relatives that could get there and other people besides.”*

This combination of memorial service and family reunion takes place in many cultures. Appalachian Decoration Day traces its roots back to traditions in the British Isles. Flowering Sunday is a Welsh holiday that took place on the Saturday before Palm Sunday. This was a time when graves were cleaned and white-washed before they were decorated with fresh flowers.

Decoration Day as an Appalachian tradition was solidified in the aftermath of the American Civil War. As the United States struggled to patch itself back together, veteran and civic organizations in both the north and south began holding memorial services to honor the soldiers who perished. After WWII, the newly renamed Memorial Day was designated a federal holiday to remember all of the people killed in the United States Armed Forces. Yet across Appalachia, many people still hold Decoration Day services to remember and honor their ancestors and to keep an ancient tradition alive. Remember as you walk through these cemeteries that each stone represents a life that lived on earth and was cherished by someone.

### Cemeteries In Alphabetical Order

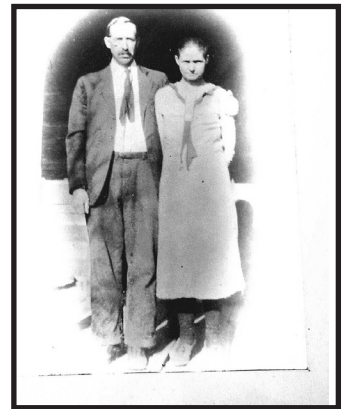
- Dirt Rock House Cemetery
- Frogge Chapel Cemetery
- George Boyatt Graves (Optional)
- Hattie Blevins Cemetery
- Katie Blevins Cemetery
- Sharp Place Cemetery
- Wolf River Cemetery

## Katie Blevins Cemetery

***Directions from Bandy Creek Visitor Center: Turn left onto Bandy Creek Road. Proceed about a mile and the cemetery is on the right. Limited parking is available at the Lora Blevins homesite.***

The Katie Blevins Cemetery was established in the mid-19th century when Jacob Blevins Sr. marked this spot with his walking stick. After he died on September 2, 1868, his wife Catherine, known as Katie, buried him there. Although Jacob was the first person buried here, the cemetery is named for Katie. The cemetery holds the graves of people from the Bandy Creek and Station Camp area, including those who served in the military. The graves reflect a community shaped by service and by the challenges of life on the Upper Cumberland.

**1. Lora Blevins** served as a Baptist minister for 60 years. Throughout these years, Lora provided spiritual guidance to his community during a time that included both World War I and World War II. He and his wife, Tealie Ann Slaven, married in 1915 and later raised six children on a 45-acre farm they purchased on the uplands in 1927. Like many families in the Big South Fork, they moved from the river bottomlands to the plateau, adapting their farming practices to the new landscape. Their home was a double-pen log house, a common design in the region, and the farmstead included a barn, corn crib, and other outbuildings that supported a self-sufficient way of life. The Lora Blevins farmstead still stands today and is located adjacent to the Katie Blevins Cemetery.



Lora and Tealie Blevins.  
Source: NPS

Look at the top of Lora Blevins' headstone.  
What symbol is engraved there? \_\_\_\_\_



Lora Blevins Homestead. Source: NPS

**2. Levi Blevins** enlisted in the U.S. Army at 18 years old and served as a Private First Class during World War II. He was wounded during the D-Day landings at Normandy. After the war, he returned home to farm in Wayne County, Kentucky.

On Levi's tombstone, what award is listed that recognizes his service? \_\_\_\_\_

**3.** Another homesite in the Big South Fork was the farm of John and Vi Litton. Their homestead provided nearly everything the family needed: hogs roamed freely, bee hives supplied honey, and Vi tended the garden that helped sustain them. John even crafted wooden toys and marbles for his children using a waterwheel-powered grinder. Like many homes of the region, their cabin was insulated with newspaper and had straw mattresses. Homes like the Littons' reflect the resourcefulness of families who lived alongside a generation shaped by military service. Veterans returned to farms like these, and the support of families and neighbors was vital in rebuilding communities during and after times of war.



John Litton Homestead. Source: NPS

**John Litton's** tombstone originally included a small image of him. The insert is now missing but you can see the evidence of where it once was. Many of the graves in this cemetery from the same era still have photos of the deceased embedded in their headstones, offering a tangible connection to the people who lived in this community.

How many other tombstones in this cemetery include embedded memorial photos? \_\_\_\_\_

**4. Elijah "Lation" Slaven** served in the U.S. Army during World War I as part of Company D, 319th Infantry. He fought on the frontlines during the Meuse-Argonne Offensive in northern France, one of the toughest campaigns of the war. This offensive is often what people imagine when they think of World War I, with long stretches of "No Man's Land" between the trenches and constant enemy fire.

Look closely at Lation Slaven's military tombstone. What was his military rank? \_\_\_\_\_

## Sharp Place Cemetery

***Directions from Bandy Creek Visitor Center: Go right onto Bandy Creek Rd towards Leatherwood Rd/TN-297 E for 1.7 miles. Turn right on Leatherwood Rd/TN-297 E for 10.4 miles. Turn right onto TN-154 N/ Pickett Park HWY. In 0.2 miles, keep left onto Akers Chapel Loop. Continue 0.3 miles, cemetery is on the left.***

When naturalist and writer John Muir traveled across the Cumberland Plateau after the Civil War, he found a region still recovering. In places like Sharp Place, the effects of war were part of everyday life. The people buried here lived during a time when military service and its impact were common. This cemetery reflects a generation shaped by war and its aftermath.

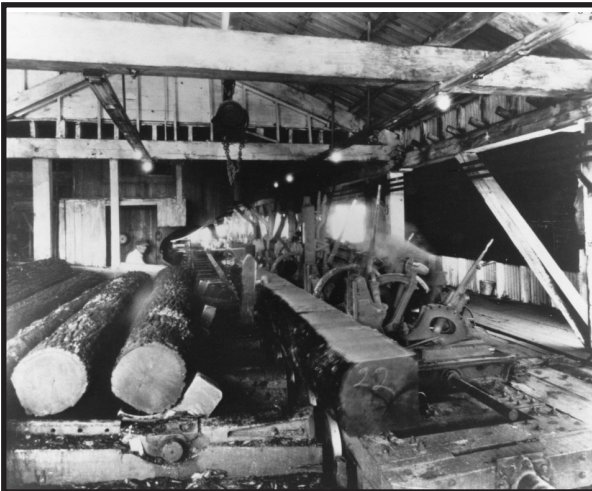
**5. Garfield “Gar” Blevins**, the grandson of “Dide” Blevins, was born in Wayne County Kentucky. One of his earliest memories was the whistle of the K&T Railroad echoing through the hills as trains hauled lumber for the Stearns Coal and Lumber Company. As a boy, Gar moved with his family to White Pine in search of work tied to timber, coal, and railroads. Like many men in the area, Gar worked a variety of jobs. He cut railroad ties, worked in sawmills and coal mines, and helped build roads. For a time, he also worked as a surveyor for Great Smoky Mountains National Park. Of all his jobs, he later said road work was the one he enjoyed most.

In 1938, Camp 5 of Stearns Coal and Lumber Company was established near Peter’s Mountain. Gar and his wife helped run the camp’s boarding house, cooking daily meals for as many as 35 loggers.

Working side by side, they cared for the camp through two logging seasons.

During World War II, Gar served three years and 27 days in the U.S. Navy aboard the USS Haynes, a small destroyer. Assigned primarily to the fire room, he worked below deck keeping steam up for the ship during operations that carried him through the Panama Canal and into the invasion of southern France.

What year did Gar Blevins pass away\_\_\_\_\_



Stearns Coal and Lumber Co. sawmill operations.

Source: NPS

6. In 1916, **Celia and Andrew Seay** moved to Fentress County, Tennessee, after finding work in the timber industry near Jamestown. The following year, during the early months of the United States' involvement in World War I, Celia became ill and died on September 21, 1917. Andrew died the next day, leaving their children orphaned. A member of the community arranged for the children to travel by lumber train to Polk County, Tennessee, where they were taken in by another family. Their story reflects the challenges faced by families on the home front during a time of national conflict.

How long had Celia and Andrew been living in Fentress County before their deaths? \_\_\_\_\_



Seay Family.  
Source: Polk County Historic Society

## Dirt Rock House Cemetery

*Directions from Bandy Creek Visitor Center: Go right onto Bandy Creek Rd towards Leatherwood Rd/TN-297 E for 1.7 miles. Turn right on Leatherwood Rd/TN-297 E for 10.4 miles. Turn right onto TN-154 N/ Pickett Park HWY. In 2 miles, turn right onto Divide Rd. In 1 mile, turn right onto Fork Ridge Rd. Continue 1.4 miles, cemetery is on the left.*

*Directions from Sharp Place Cemetery: Turn right (head south) on Akers Chapel Loop for 0.1 miles. Take a sharp left onto TN-154 N/Pickett Park HWY. In 1.8 miles, turn right onto Divide Rd. In 1 mile, turn right onto Fork Ridge Rd. Continue 1.4 miles, cemetery is on the left.*

Many of those buried here experienced a time when military service was a common part of life in the Upper Cumberland. After the war, communities worked to rebuild. Churches reopened, farms were restored, and families began to reconnect. Veterans returned home and became part of that recovery. The graves here represent people who lived through the war and the years that followed.

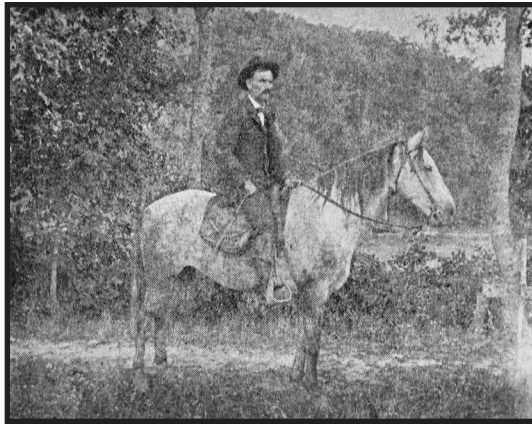


Dirt Rock House Cemetery Sign.  
Source: NPS

7. By the time **Reverend Jacob Roysden** began his ministry, his understanding of the Civil War and service to God had been shaped by older preachers such as A. B. Wright, who had witnessed the conflict firsthand. Wright described congregations divided by suspicion, meetinghouses standing empty, and towns, courts, and churchyards neglected or overrun by troops. He believed moral and civic order were closely connected, and that when courts and commerce failed, churches often struggled as well.

In this environment, traveling ministers became a lifeline for many communities. Wright rode from place to place, preaching in churches, barns, and along riverbanks. He carried guidance and encouragement to scattered families still dealing with the divisions left by the war. His writings emphasized not only personal faith, but also the importance of rebuilding community life.

What quote is on Reverend Jacob Roysden's grave? \_\_\_\_\_



A circuit-rider preacher.  
Source: TN State Library and Archives

**8. Florence Belle Roysden Tinch**, Jacob Roysden's daughter, belonged to the first generation to know the Civil War only through memories from the previous generations. As railroads and timber industries entered the region, her early motherhood unfolded when the logging industry started to pick up. She raised children while elders still remembered the war, and watched the younger generations being drawn toward wages and education. After World War I, Florence followed her husband Henry Alvin Tinch as timber work carried the family across the region, eventually settling near Bandy Creek, on the opposite side of the field from the Lora Blevins Homesite.

Before "store-bought" headstones were common, grave markers had to be carved by hand, which limited their size and design. Take a close look at Florence Tinch's original grave marker. What type of stone was used? \_\_\_\_\_

## Hattie Blevins Cemetery

**Directions from Bandy Creek Visitor Center:** Go right onto Bandy Creek Rd towards Leatherwood Rd/TN-297 E for 1.7 miles. Turn right on Leatherwood Rd/TN-297 E for 10.4 miles. Turn right onto TN-154 N/ Pickett Park HWY. In 2 miles, turn right onto Divide Rd. Continue for 4.6 miles, then turn left onto Blevins Cemetery Rd. In 1.3 miles, cemetery will be on the right.

**Directions from Dirt Rock House Cemetery:** Go right (head west) on Fork Ridge Rd. In 1.4 miles, turn right onto Divide Rd. Continue for 3.6 miles, then turn left onto Blevins Cemetery Rd. In 1.3 miles, cemetery will be on the right.

Hattie Blevins Cemetery is one of five cemeteries in the Big South Fork named after women. The date of the first burial is unknown, and some graves are marked only by simple fieldstones. Those connected to this cemetery lived through periods of military service and change in the region. Like many families in the area, the Blevins family experienced war, industrial growth, and economic hardship. Although Hattie Blevins is buried elsewhere, this cemetery reflects the history of her family and the community.

**9.** In the remote wilderness of the No Business community, **Lewis Burke**, the son of Jonathan Burke, came of age as the Civil War began. On May 3, 1863, Confederate guerrillas raided the area and took refuge in the Burke family's cabin. Soon after, 30 to 50 men from the Scott County Home Guard surrounded the cabin and attacked, killing nearly the entire guerrilla band inside.

The violence left a lasting impression on Lewis. He later enlisted in Company K of the 30th Kentucky Infantry. For Lewis Burke and his neighbors, the war was never a distant conflict--it had already turned their community and homes into battlegrounds.



Burke Cabin. Source: NPS

Standard military gravestones are typically rounded or pointed at the top. How does Lewis's grave differ? \_\_\_\_\_

**10.** Lewis was not the only one from No Business to witness these raids and enlist soon after. **Diansis “Dide” Blevins** enlisted at Burnside and served in Company D of the 30th Kentucky Infantry. His name was often recorded differently in official records. It appears as “Francis” on his enlistment document, “Dianthus” in census records, and “Died” Blevins on his tombstone.

Official documents list his regiment as the 30th Kentucky Infantry, how is this different on his tombstone? \_\_\_\_\_

**11. Armstead “Armp” Blevins**, the husband of Hattie Blevins, was born just over 20 years after the Civil War. His life reflects the limited opportunities faced by many families in the mountains. Raised in an isolated community, his days were shaped by subsistence farming and hard physical labor.

By the early twentieth century, timber companies had begun harvesting much of the region’s old-growth forest, changing both the landscape and the local economy. Like many rural residents of the time, Armp lived largely outside formal record keeping, and details about his life, and even his death in 1926, were only sparsely documented.

How old was Armp Blevins when he passed? \_\_\_\_\_

**12.** Armp and Hattie Blevin’s daughter, **Minnie Blevins**, died during childbirth, a far too common tragedy in isolated communities where medical care was scarce, and births were attended only by family or a midwife. Unlike wartime violence, Minnie’s death was the quiet danger of isolation that defined everyday life in the mountains.

Minnie shares a tombstone with her infant daughter. What is her daughter’s name? \_\_\_\_\_



Armp and Hattie Blevins. Source: findagrave.com/JoAnn Stephens Graham

## George Boyatt Graves (Optional)

*This is an optional site located in McCreary County, Kentucky. It can be reached on foot from the Laurel Hill Multiple Use Trail via a marked social trail, identified by flagging and synthetic flowers. Be prepared when traveling here, as the road is dirt and gravel and cell service is limited. The closest cemetery to this site is the Hattie Blevins Cemetery.*

*Two possible graves are present at the site: the marked grave of George N. Boyatt and a second uninscribed grave identified by fieldstones. Synthetic flowers are placed at the gravesite and should be left in place. Visit this cemetery to earn an extra 10 points toward the Go Big 2026 Challenge.*

*Directions from Hattie Blevins Cemetery: Turn right (head south) on Blevins Cemetery Rd for 1.3 miles. Take a sharp left onto Divide Rd (entering Kentucky). Continue straight for 3.1 miles until Divide Rd turns into Cr-1240/Peters Mountain Rd after crossing the Kentucky border. In 3 miles, turn right onto Devils Creek-Beech Grove Rd. In 1.6 miles, turn right onto Laurel Hill Rd. In 0.8 miles, the cemetery is on the left.*



George Boyatt Graves, circa 2023.  
Source: NPS

**13.** The small settlement of Laurel Hill supported the surrounding timber industry and included a schoolhouse and church for the local community. Among those buried here is **George Newton Boyatt**, who served in the Spanish-American War as part of the 4th Tennessee Infantry. Like many men from this region, Boyatt left a rural community to serve in the military and later returned home.

In 1898, George Newton Boyatt left his home to enlist with other Tennesseans at Knoxville during the Spanish-American War. Volunteer regiments often gave themselves nicknames, such as the Rough Riders or Buffalo Soldiers. At Camp Poland, members of the 4th Tennessee jokingly suggested several names for their company--including Taylor's Tennessee Tigers, Brown's Bloody Butchers, and Hannah's Heroic Hornets--honoring Governor Robert Love Taylor, Colonel George Leroy Brown, and second-in-command Harvey H. Hannah. None of the names stuck.

By November 1898, the 4th Tennessee, Company K, left Knoxville for Trinidad, Cuba. Fighting had already ended, and the regiment served as part of the American occupation force. The unit was disbanded in May 1899.



George Boyatt.  
Source: findagrave.com/  
Julie Crabtree

How old was George Boyatt when he went to Cuba with the 4th Tennessee, Company K? \_\_\_\_\_



Regimental staff of the 4th Tennessee.  
Source: TN State Library and Archives

## Wolf River Cemetery

**Directions from Bandy Creek Visitor Center:** Go right onto Bandy Creek Rd towards Leatherwood Rd/TN-297 E for 1.7 miles. Turn right on Leatherwood Rd/TN-297 E for 10.4 miles. Turn left onto TN-154 S/ Pickett Park HWY for 8.1 miles then turn left after the House of Prayer church with the red roof. In 0.2 miles, turn right onto US-127. Continue for about 8 miles and turn right onto Wolf River Loop. In 0.6 miles, turn left to stay on Wolf River Loop. Cemetery will be on the right, just beyond the Wolf River United Methodist Church.

**Directions from Hattie Blevins Cemetery:** Turn right (head south) on Blevins Cemetery Rd for 1.3 miles. Turn right on Divide Rd. Continue on Divide Rd for 3.2 miles. Turn left onto TN-154 S/ Pickett Park HWY for 10.1 miles then turn left after the House of Prayer church with the red roof. In 0.2 miles, turn right onto US-127. Continue for about 8 miles and turn right onto Wolf River Loop. In 0.6 miles, turn left to stay on Wolf River Loop. Cemetery will be on the right, just beyond the Wolf River United Methodist Church.

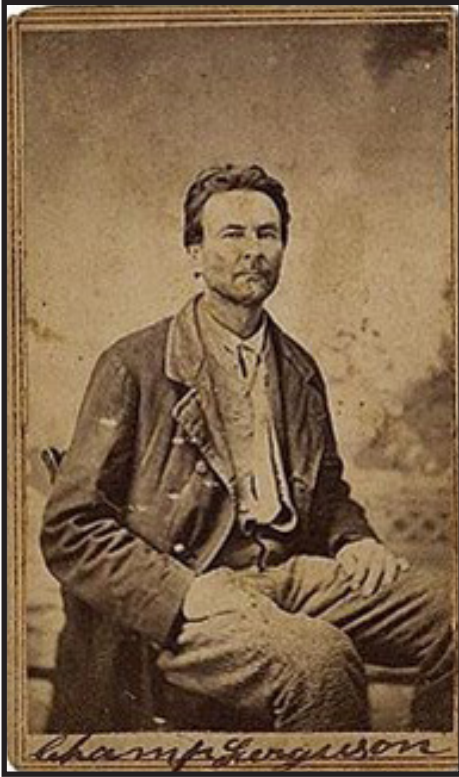
The Wolf River area of Fentress County was once known as the “Heart of Fentress County.” Established in the 1840s as Mount Pleasant Cemetery, it is best known as the final resting place of Sergeant Alvin C. York, a World War I soldier. This cemetery includes the graves of men who served in different conflicts. Many of these are located near the large tree and church, where several generations of families are buried.

**14.** One of the earliest European settlers of the Upper Cumberland frontier was **Conrad “Coonrod” Pile Jr.**, born in 1766. Unlike Daniel Boone’s groups who traveled through the Cumberland Gap, Conrad traveled from Grainger County, in southeastern Tennessee, and ventured into the Wolf River Valley, carving out a life in one of the most remote corners of early Tennessee. His first shelter was a cave above a spring before he claimed land and built what became one region’s earliest permanent homesteads.



Conrad Piles’ first home.  
Source: TN State Library and Archives of the

Fentress County, Tennessee, was formed in 1823.  
How old was the county when Coonrod Pile died? \_\_\_\_\_



Champ Ferguson after captured by Union after the American Civil War in 1865.

Source: Federal Government, Public Domain

**15.** During the Civil War, this area was caught between two violent groups: Beaty's Independent Scouts and Ferguson's Confederate gang. Both came out of the deep divisions and lack of law along the Tennessee–Kentucky border. Beaty's Scouts supported the Union and had backing from the U.S. government. Their job was to scout the area, fight guerrilla fighters, and protect local Union supporters. In contrast, Ferguson's Gang formed around Champ Ferguson, a Confederate bandit, whose band grew from personal vendettas and the lawless conditions of the region. They were products of a place where organized troops rarely stayed. The Wolf River area sat at the center of some of the most violent and unstable conditions in the Upper Cumberland.

**Benjamin Strother Barton**, born in what is now Pickett County, joined the Confederate Army at Camp McGinnis here at Wolf River. He fought at the Battle of Mill Springs in Kentucky. Shortly afterward though, Barton deserted, returned to Tennessee, and joined Ferguson's Gang. In the winter of 1864–1865, Barton was killed by a member of Beaty's Scouts. Barton is the only confirmed Confederate soldier buried in either cemetery at Wolf River.

During the Civil War, veterans were often buried with either a government-issued headstone or one provided by their family. Which type of headstone did Benjamin receive? \_\_\_\_\_

**16.** During Champ Ferguson's 1865 trial for his crimes committed during the Civil War, witnesses testified that **Alexander Huff Sr.**, an elderly and unarmed civilian, was executed at Jeff Pile's place, the home originally built by Coonrod Pile. According to neighbors' testimony, Ferguson rode up with armed men, accusing Huff of aiding Union forces. Huff insisted he was too old to fight, but Ferguson tortured him and then shot him. Alexander Huff would become one of 53 confirmed deaths attributed to Ferguson's guerrilla band, many of them civilians.

How old was Alexander Huff at the time of his death? \_\_\_\_\_

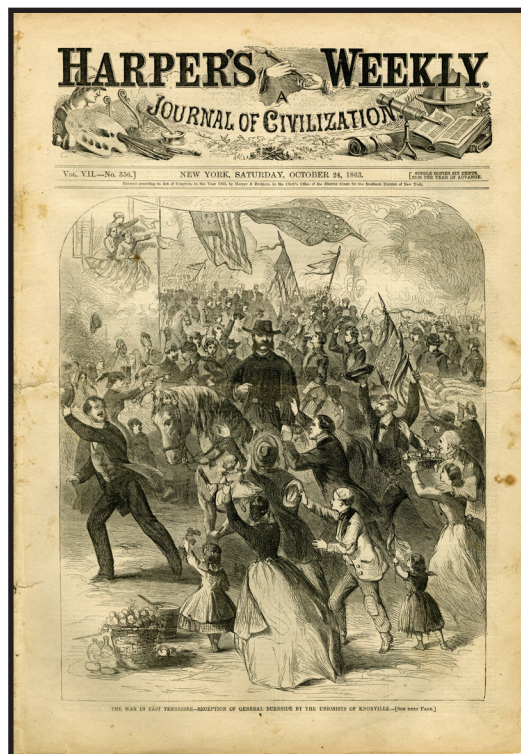
**17. Nancy Pile Brooks** and her sisters testified at Champ Ferguson's trial for the murders on the Upper Cumberland. She described gunfire lasting nearly half an hour and witnessed Alexander Huff begging for his life before being executed. For civilians like Nancy, the war was deeply personal, marked by fear and neighbors turning on one another. Groups like Ferguson's Gang and Beaty's Scouts brought the violence of war into the local communities, blurring the line between battlefield and homestead.

About how many graves lie between Nancy and her husband William? \_\_\_\_\_

**18.** Nancy later married **William Brooks**, born William Harrington, a Union soldier from the 11th Michigan Cavalry. Brooks marched south with General Burnside's army, deserted and changed his name so he could remain in the Wolf River Valley. Tensions arose between Nancy's family (the Piles) and Preston Huff, a member of Beaty's Scouts and son of Alexander Huff. After the war, Preston accused the Piles of conspiring against his father and threatened Brooks. The following day, Preston Huff was found dead.

William, Nancy, and their first child fled north to Michigan. While there, the couple had another child. Months later, a letter Nancy sent home was intercepted, and extradition papers were issued for William Brooks. He returned with his wife and two children and was jailed in a wooden cell at Jamestown. While legal proceedings were still underway, a mob seized him, tied his feet to a horse, dragged him several miles, and lynched him.

William and Nancy were married in 1863, during the Civil War. How long were they married before William's death? \_\_\_\_\_



Harper's Weekly cover showing Gen. Burnside in Knoxville. Source: TN State Library and Archives

## Frogge Chappel Cemetery

*Directions from Bandy Creek Visitor Center: Go right onto Bandy Creek Rd towards Leatherwood Rd/TN-297 E for 1.7 miles. Turn right on Leatherwood Rd/TN-297 E for 10.4 miles. Turn left onto TN-154 S/Pickett Park HWY for 8.1 miles then turn left after the House of Prayer church with the red roof. In 0.2 miles, turn right onto US-127. Continue for 8.3 miles and turn left onto Reed Creek Rd. In 1.1 miles, the cemetery is on the left.*

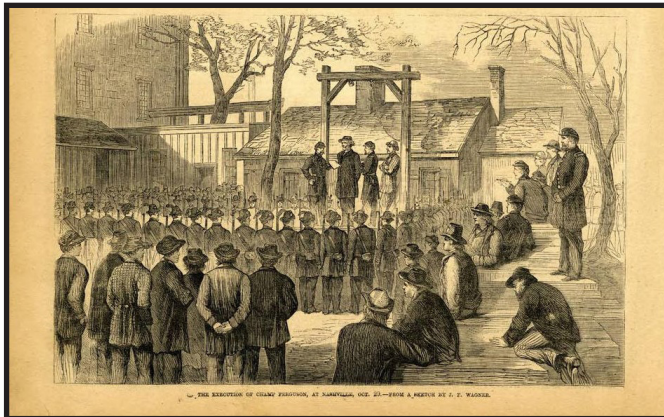
*Directions from Wolf River Cemetery: Turn left on Wolf River Loop. In 0.7 miles, turn right to stay on Wolf River Loop. Then in 0.4 miles, turn right onto US-127 N. Continue for 0.7 miles, then turn left onto Reed Creek Rd. In 1.1 miles, the cemetery is on the left.*

Frogge Chapel Cemetery is located in a part of Fentress County shaped by its earliest residents and later affected by the violence and instability of the American Civil War. Some of those buried here lived during the American Revolutionary War, while later generations experienced the divisions of the Civil War.

**19.** In the Upper Cumberland, the Civil War was fought not only between armies, but within families. **Elizabeth Pile Riley** witnessed this division firsthand. Her brother and son, Jeff Pile and **John B. Riley**, were killed by Beaty's Independent Scouts. Her brother Rod Pile Jr. was killed by Ferguson's Gang. After the war, two of her nephews, Sherwood and James Pile, joined a group known as the Wolf River Gang and continued terrorizing the local community. Many members of the Pile family are buried in cemeteries throughout the area, not just here at Frogge Chappel. Together, these burial sites reflect the widespread impact of the conflict on one extended family.

Elizabeth and her sisters later testified at Champ Ferguson Trial for the murder of 53 individuals during the war, helping secure charges against him.

How does John B. Riley's grave differ from the other Riley family graves? \_\_\_\_\_



Execution of Champ Ferguson, at Nashville.  
Source: TN State Library and Archives

**20. Thomas Wooten**, a resident of Wayne County, Kentucky, enlisted in Company I of the 30th Kentucky Infantry at Camp Burnside on April 5, 1864. His regiment was a mounted unit, allowing soldiers to move quickly across Kentucky, Tennessee, and Virginia in response to Confederate forces and guerrilla fighters. During his service, the 30th Kentucky Infantry took part in a number of engagements, including fighting at Cynthiana, Kentucky, and Saltville, Virginia, where the regiment suffered casualties. Much of their time was spent in fast-moving operations, often tracking and confronting irregular forces rather than fighting in large, traditional battles. After more than a year of service, Wooten was discharged on April 18, 1865, as the war came to a close.

How old was Thomas Wooten when he enlisted in the Union Army? \_\_\_\_\_



Thomas Wooten.  
Source: findagrave.com/  
Kelly Riley

**21. John Henry Riley** was born in 1761 in England. During the American Revolutionary War, he enlisted as a private soldier in Virginia in October 1777. Riley spent much of his time in the army marching and supporting artillery units. His service took a devastating turn at the Battle of Stony Point in July 1779. While assisting with a cannon, the recoil crushed his foot. Moments later, a musket ball struck his already injured leg, leaving him permanently disabled. After months of recovery, he was discharged from service in December 1779.

After the war, Riley married Nancy Evans Riley, and together they raised their children including three sons--William, Thomas, and John Floid Riley. The family lived for a time near English Ferry on the New River in Virginia before moving west into what is now Fentress County, Tennessee. Riley became one of the earliest pioneers in the Wolf River area, helping establish a new community on the frontier. His sons, Thomas and John Floid, went on to purchase large tracts of land and played a role in building the local community. Despite his service, Riley later stated in his pension application that he had no written proof of his discharge and relied on his own testimony to tell his story. This was common for many Revolutionary War soldiers, as discharge papers were often lost, never issued, or difficult to keep over time. He also noted that he remained crippled for the rest of his life due to his war injuries.

How old was John Floid Riley when his father passed? \_\_\_\_\_

Thank you for completing the 2026 Cemetery Quest. Cemeteries are a physical connection to the past and Decoration Day is a time to honor the lives of those who rest there. Please return this booklet and any trash that you have collected (or take a picture of your bag of trash) to Bandy Creek Visitor Center at 151 Stable Road, Oneida, TN 37841 before 4:00 PM (ET) on May 31 to receive your 2026 Decoration Day Cemetery Quest Patch.

This completed booklet can potentially count 25 points toward the GO BIG 2026 Challenge. Pick up your GO BIG 2026 Challenge book at Bandy Creek Visitor Center.

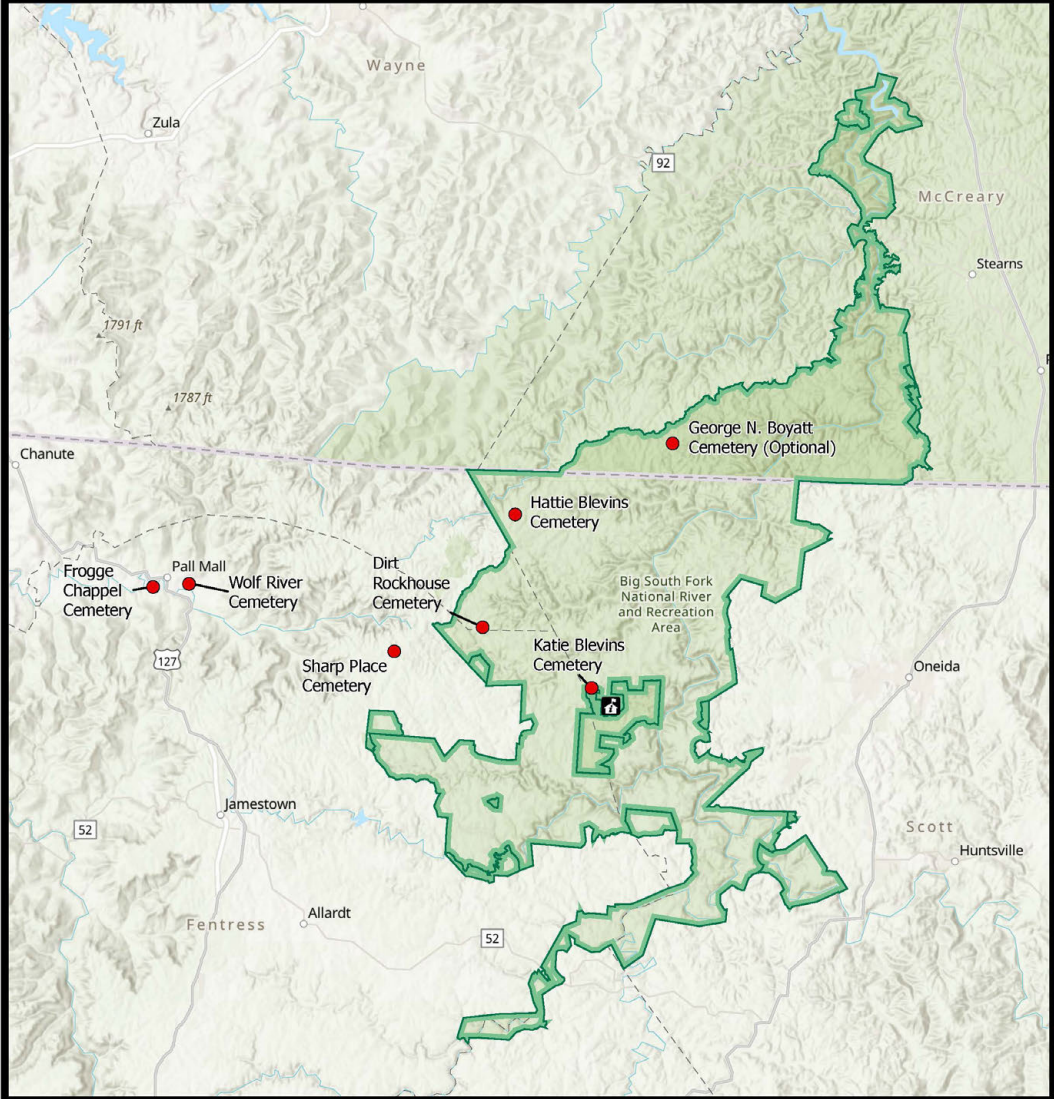
For more information about cemeteries in Big South Fork NRR, visit [www.nps.gov/biso/learn/historyculture/cemeteries](http://www.nps.gov/biso/learn/historyculture/cemeteries)



Unknown funeral in Scott County, TN.  
Source: Museum of Scott County



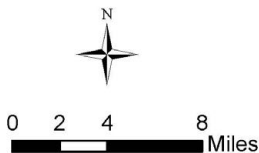
### Decoration Day Cemetery Quest 2026 Overview



Produced by BISO GIS Office  
PCS: WGS 1984 Web Mercator Auxiliary Sphere

March 2026

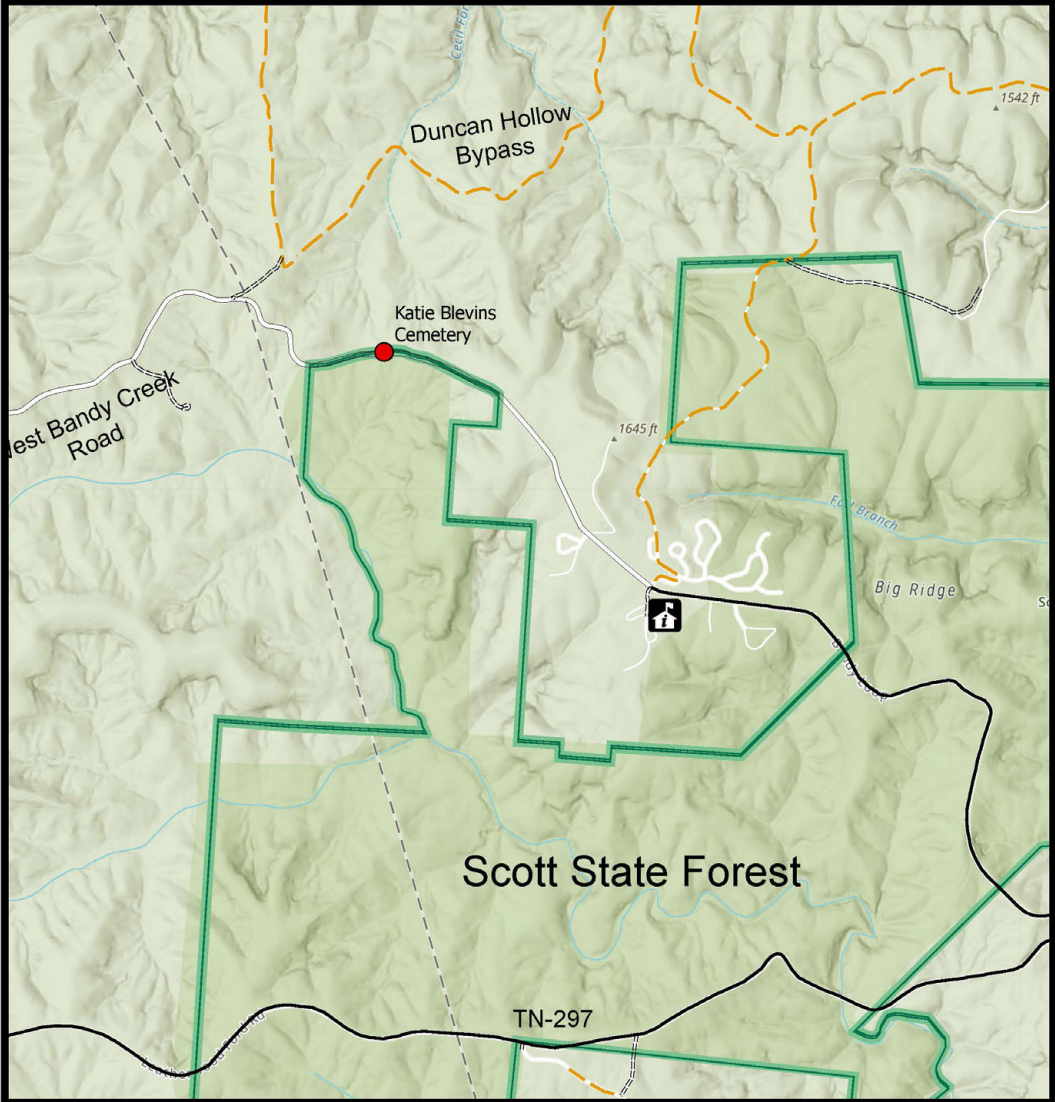
D:\\_Reoccurring Projects\Cemetery Quest\Cemetery Quest 2026.aprx



- Cemetery
- Bandy Creek Visitor Center
- Park Boundary



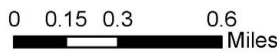
### Decoration Day Cemetery Quest 2026 Bandy Creek



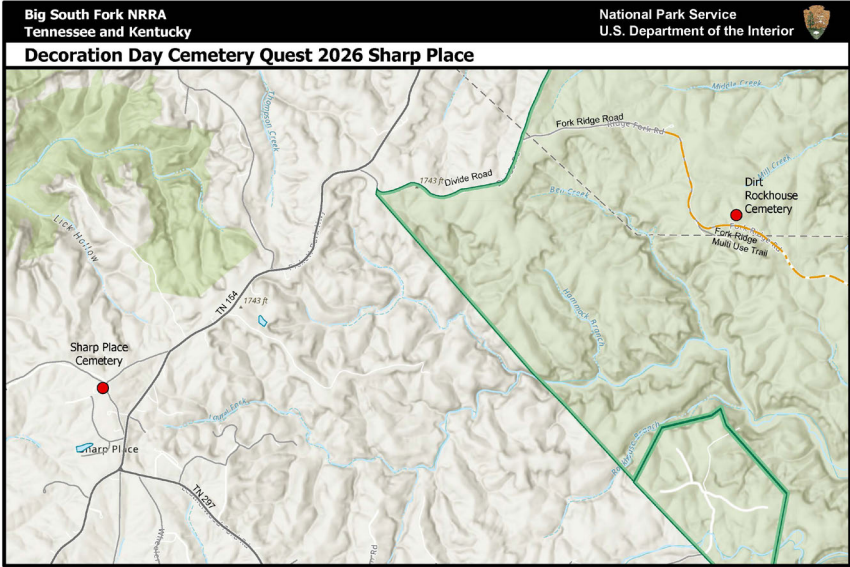
Produced by BISO GIS Office  
PCS: WGS 1984 Web Mercator Auxiliary Sphere

**March 2026**

D:\\_Reoccurring Projects\Cemetery Quest\Cemetery Quest 2026.aprx



- Cemetery
- Bandy Creek Visitor Center
- Park Boundary
- Multi-use Trail
- Paved Road
- Improved Road
- Unimproved Road



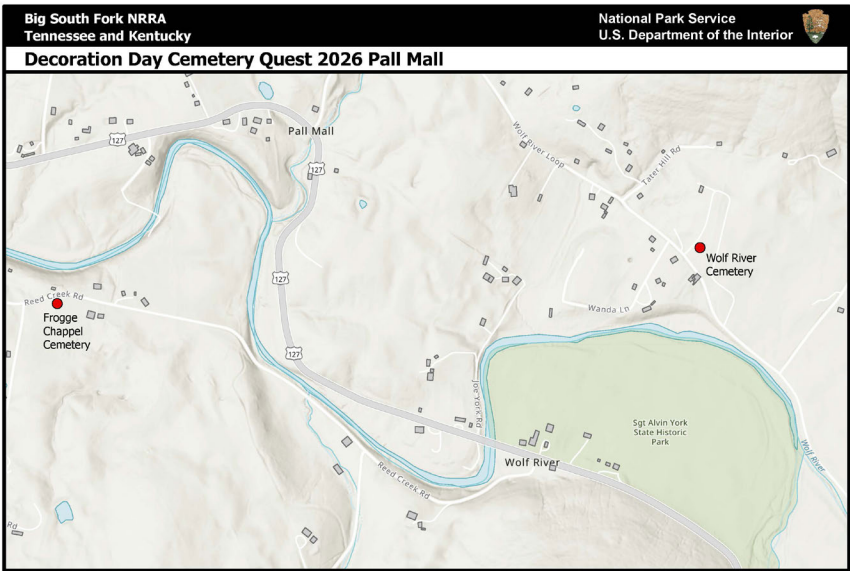
Produced by BISO GIS Office  
PCS: WGS 1984 Web Mercator Auxiliary Sphere  
March 2026



0 0.25 0.5 1 Miles

● Cemetery  
— Multi-use Trail  
— Local Connector Road  
— Local Road

D:\\_Recurring Projects\Cemetery Quest\Cemetery Quest 2026.aprx



Produced by BISO GIS Office  
PCS: WGS 1984 Web Mercator Auxiliary Sphere  
March 2026



0 500 1,000 2,000 Feet

● Cemetery  
■ Structures

D:\\_Recurring Projects\Cemetery Quest\Cemetery Quest 2026.aprx



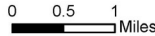
**Decoration Day Cemetery Quest 2026 North**



Produced by BISO GIS Office  
PCS: WGS 1984 Web Mercator Auxiliary Sphere

March 2026

D:\\_Recurring Projects\Cemetery Quest\Cemetery Quest 2026.aprx



- Cemetery
- Park Boundary
- Multi-use Trail
- Improved Road

Big South Fork NRA Tennessee and Kentucky		National Park Service U.S. Department of the Interior	
<b>Decoration Day Cemetery Quest 2025 Cemetery GPS Coordinates</b>			
Cemetery Name	Latitude	Longitude	
Dirt Rockhouse Cemetery	36.5263	-84.7756	
Frogge Chappel Cemetery	36.5461	-84.9764	
George N. Boyatt Cemetery	36.6164	-84.6598	
Hattie Blevins Cemetery	36.5816	-84.7558	
Katie Blevins Cemetery	36.4966	-84.7092	
Sharp Place Cemetery	36.5145	-84.8294	
Wolf River Cemetery	36.5476	-84.9545	
WGS 1984 Web Mercator Coordinate System			

## Rules for the 2026 Decoration Day Cemetery Quest

1. The quest begins at Bandy Creek Visitor Center on May 2 and will last until May 31. If you plan to finish the Cemetery Quest on May 2, you must return this packet to Bandy Creek Visitor Center by 4:00 PM (ET). All packets must be returned by May 31 to receive the Quest Patch.
2. You will receive 10 extra points for finishing the Cemetery Quest on May 2.
3. The packet will be available for download on the Big South Fork NRRRA website at 9:00 am (ET) or a copy can be picked up at Bandy Creek Visitor Center at 151 Stable Road, Oneida, TN 37841, at 9:00 AM (ET) on May 2.
4. Be aware that many of the cemeteries are located in the back country. It is advised that you drive a vehicle with some clearance underneath. ATVs and other off road vehicles are not allowed.
5. Participants may complete the packet individually or in teams. Teams cannot split up.
6. These cemeteries are the final resting places of the people who called Big South Fork home. Please treat these historic sites with respect.
7. Tombstones may be simple field stones (with or without inscriptions), historic commercial gravestones, or modern granite or marble tombstones. Historic tombstones may be loose or fragile. NOTE: Gravestone rubbings ARE NOT permitted.
8. Do not remove gravestones, walk, sit, or lean on grave plots or tombstones.
9. Practice the principles of Leave No Trace and take only photos, information, and memories with you when you leave. Do not remove anything from grave plots or stones.
10. If a cemetery has a gate, please close the gate when you depart.
11. Cemetery parking lots may be small. Parking along the roadside may be necessary. Please park in a safe manner that does not block traffic.
12. Always act in a safe manner and follow the rules and regulations of Big South Fork NRRRA.

