

Proper use and placement of snap traps

Why and when should I use snap traps?

Always! Snap traps are both a monitoring tool and a removal tool; they help alert you to rodent activity and reduce contamination by killing rodent before they do too much damage. Snap traps have been proven to be the most effective method of trapping rodents indoors, and are also considered the safest for both humans and non-target wildlife. *Keep them set year-round!*



Figure 1. Image of a snap trap. Note the large yellow square, or expanded trigger.

Proper Placement of Snap Traps

- Use many traps! Ten traps per 12x12 space or more for older or heavier infestations.
- Place traps in pairs right next to each other, with triggers against walls (Figure 3). Rodents avoid open spaces and prefer to crawl along walls and in covered areas.
- Place snap traps in potential or confirmed rodent runways and likely points of entry.
- Traps can be baited with peanut butter or a cotton ball if necessary to attract wary rodents to the trap, but do not need to be baited if placed appropriately. Expanded trigger mouse traps, as demonstrated with the larger yellow pan in Figure 1, can increase trap success if baits are not used. Peanut butter will become rancid and should be refreshed periodically to maintain attractiveness to rodents.
- Keep snap traps set in inconspicuous areas along walls and check them periodically. Set extra traps in buildings that will be closed for the winter as part of the winterization process.

Setting Snap Traps

Set the snap trap by holding the wooden base of the snap trap firmly in your hand or stabilize it against the floor. Carefully pull the spring-loaded bow up then down to the opposite side of the snap trap. Holding the bow down against the opposite side of the snap trap, carefully place the locking bar over the bow and secure the locking bar in the metal loop provided. The bait pan side of the trap should face the wall (Figure 2).

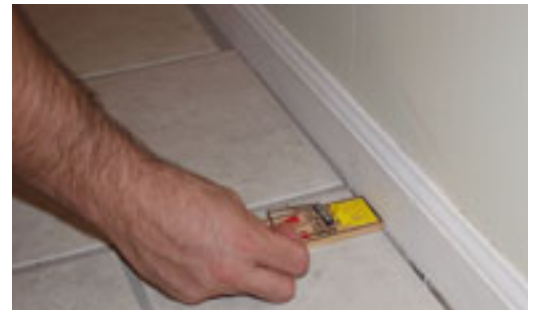


Figure 2. Proper placement of a snap trap. Note the bait is toward the wall. A second trap should be placed next to the first.

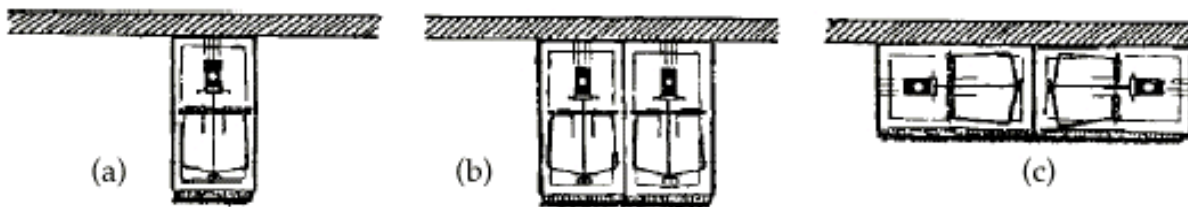


Figure 3. Placement of snap traps: (a) single trap with trigger next to wall; (b) double set, which increases your chance of success; (c) double set placed parallel to the wall with triggers to the outside, which can be particularly useful for rats.