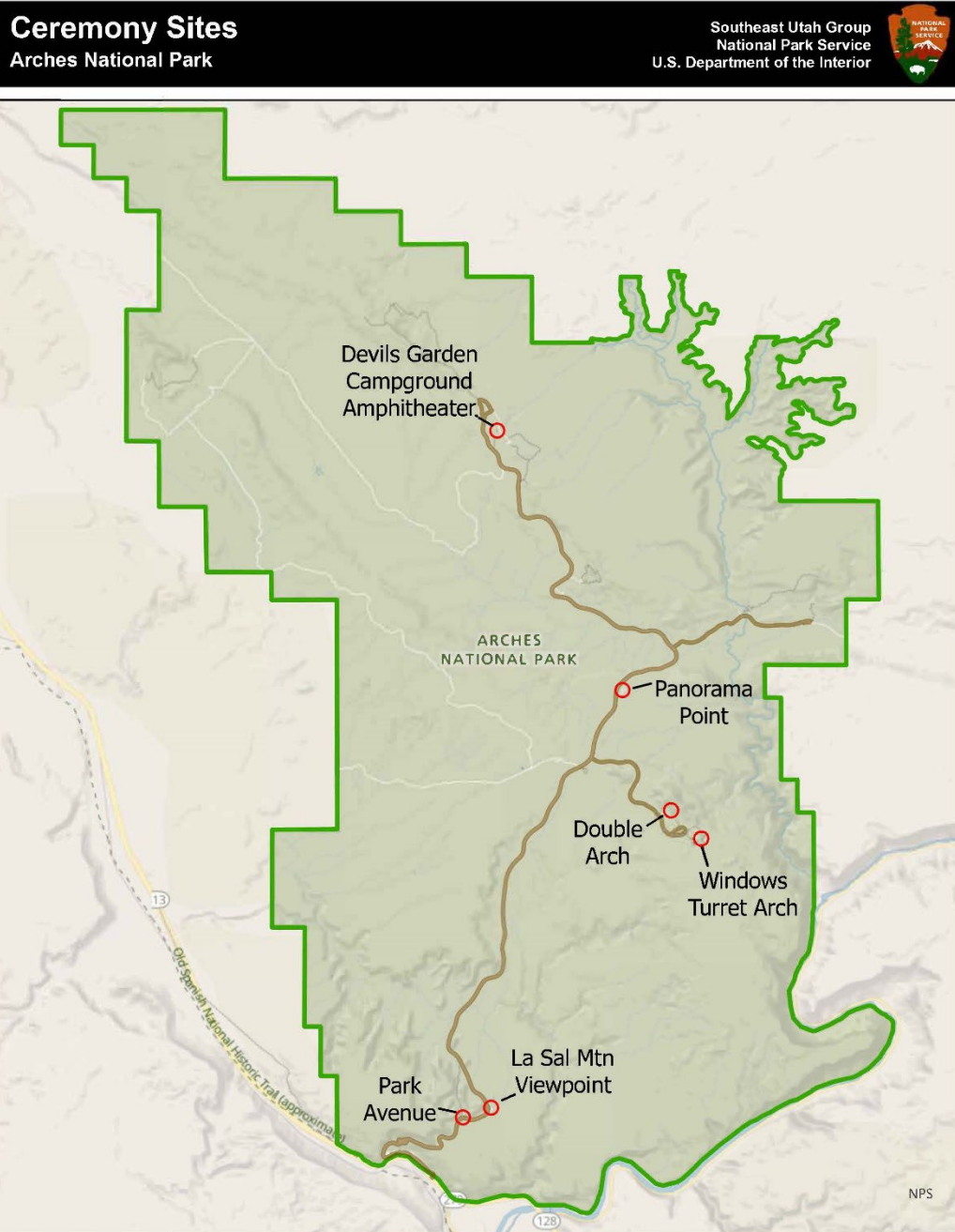




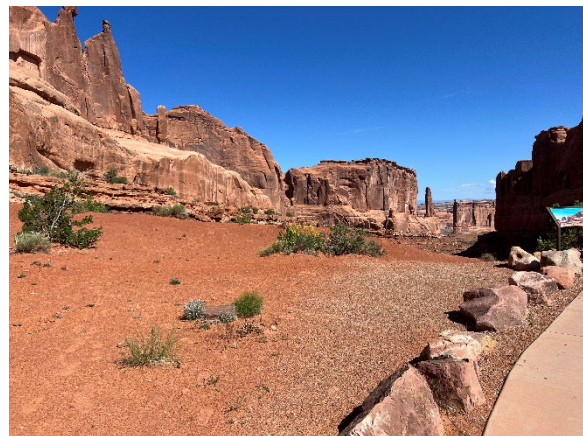
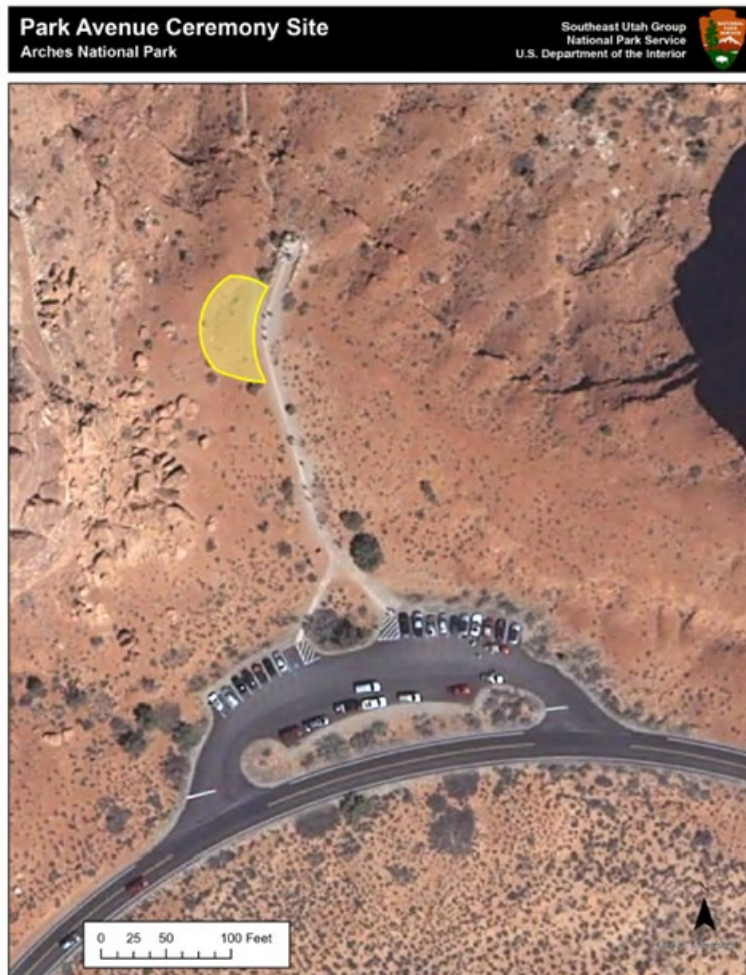
Arches National Park

Ceremony and Special Event Location Information



Park Avenue, 15 people

- Trail Description: Paved walking path.
- Area: Disturbed dirt and gravel. To the left of the trail, near the end of the viewpoint.



La Sal Mountains Viewpoint, 50 people

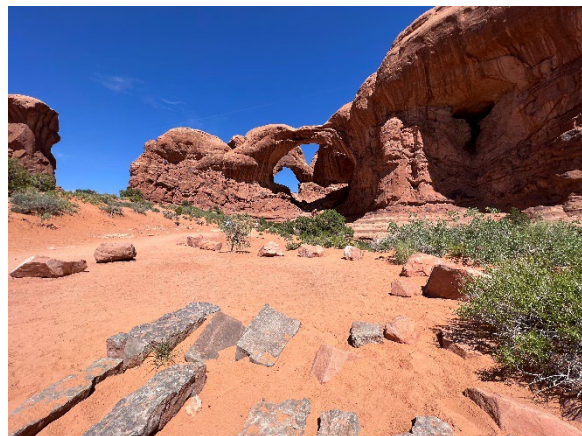
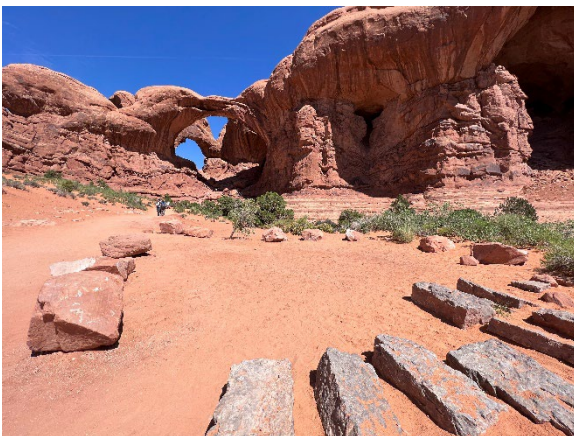
- Trail Description: Uneven rock surface.
- Area: Slickrock, disturbed dirt/gravel.





Double Arch, 25 people

- Trail description: Hard packed surface, sandy near end.
- Area: Packed dirt, sand. Off to the right of the trail in rocked off area.



The Windows, 25 people

- Trail description: Firm, bedrock. Occasional rock and wooden stairs.
- Area: Disturbed dirt/gravel, rock. Center of 1 mile loop.



Panorama Point, 50 people

- Trail Description: Paved paths.
- Area: Paved amphitheater with seating.



Devils Garden Campground Amphitheater, 80 people

- Trail description: Paved path.
- Area: Gravel amphitheater with seating.

