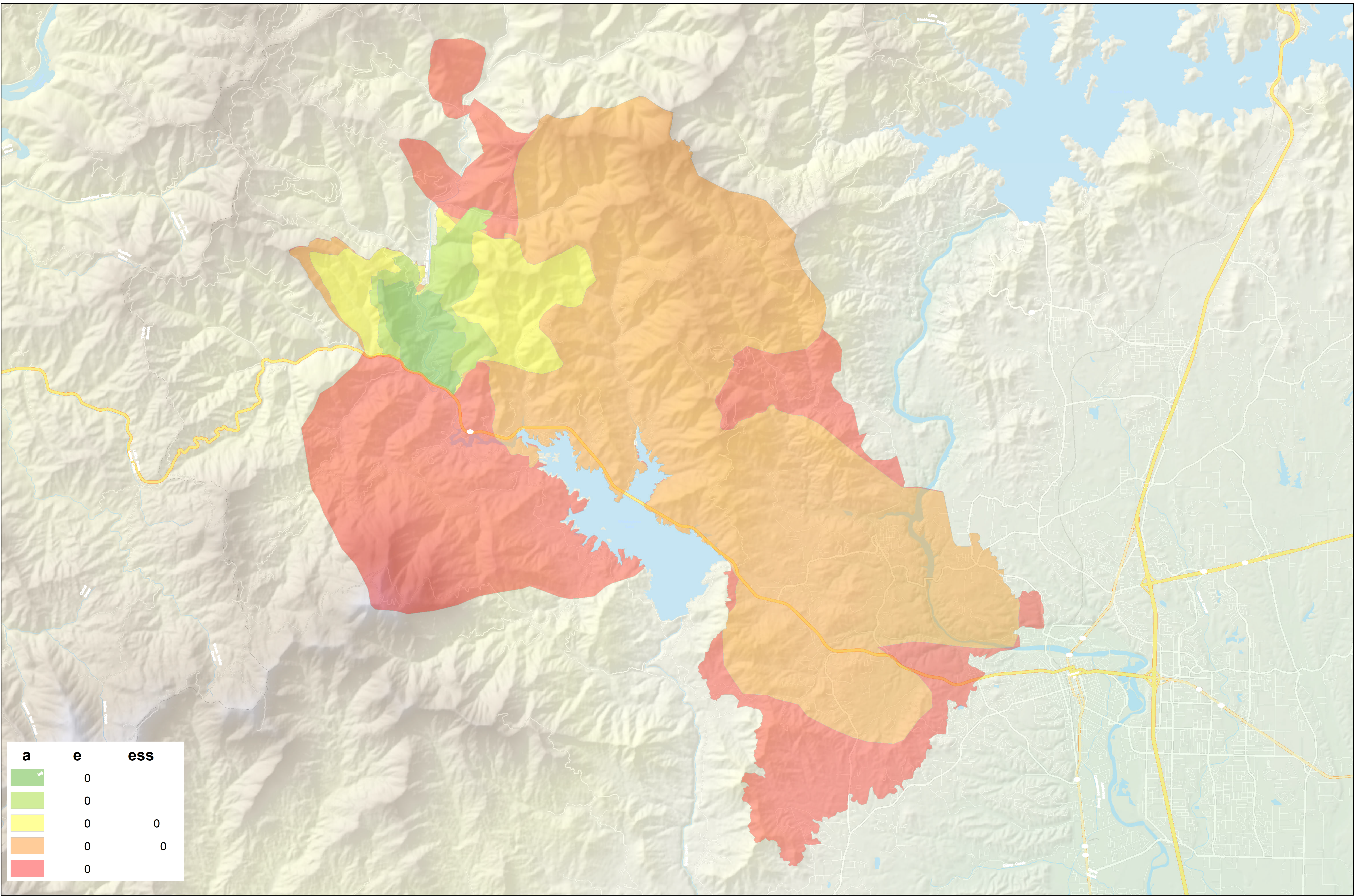
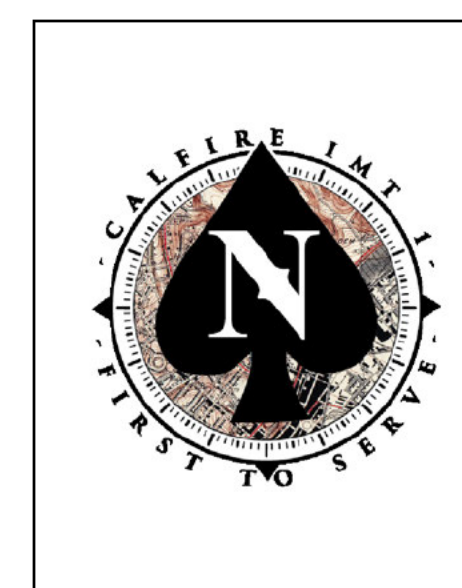


# CARR INCIDENT



a	e	ess
0	0	0
0	0	0
0	0	0
0	0	0
0	0	0

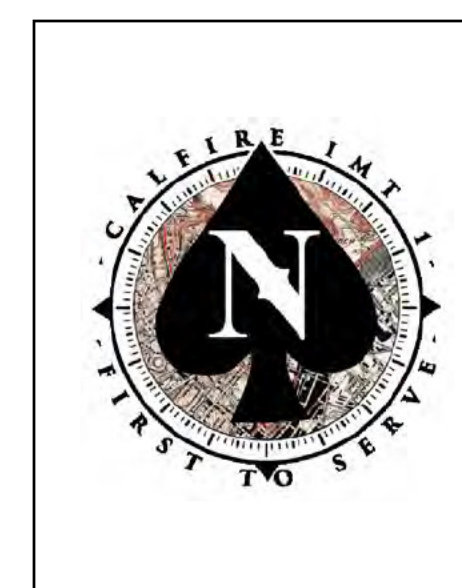
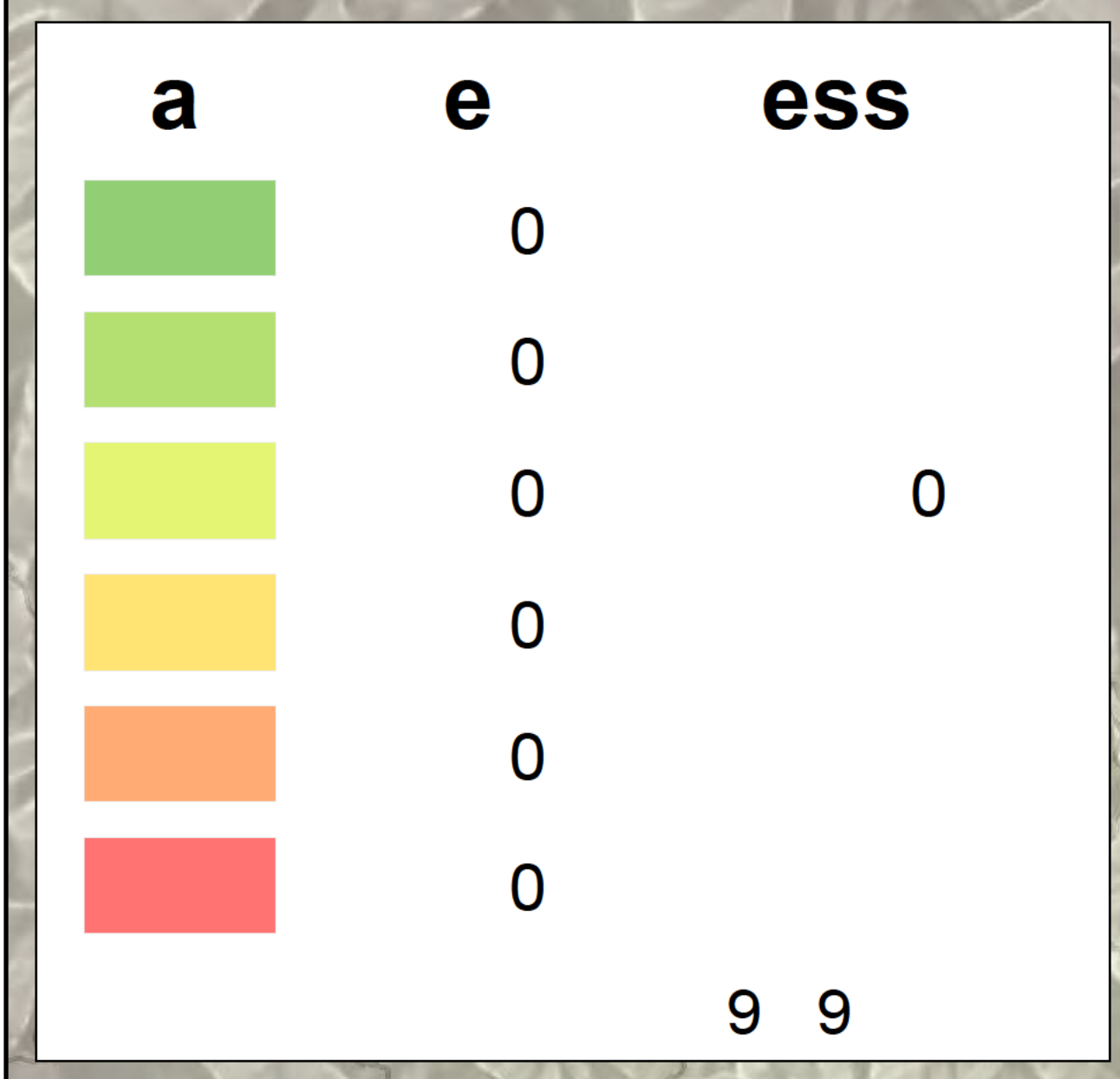
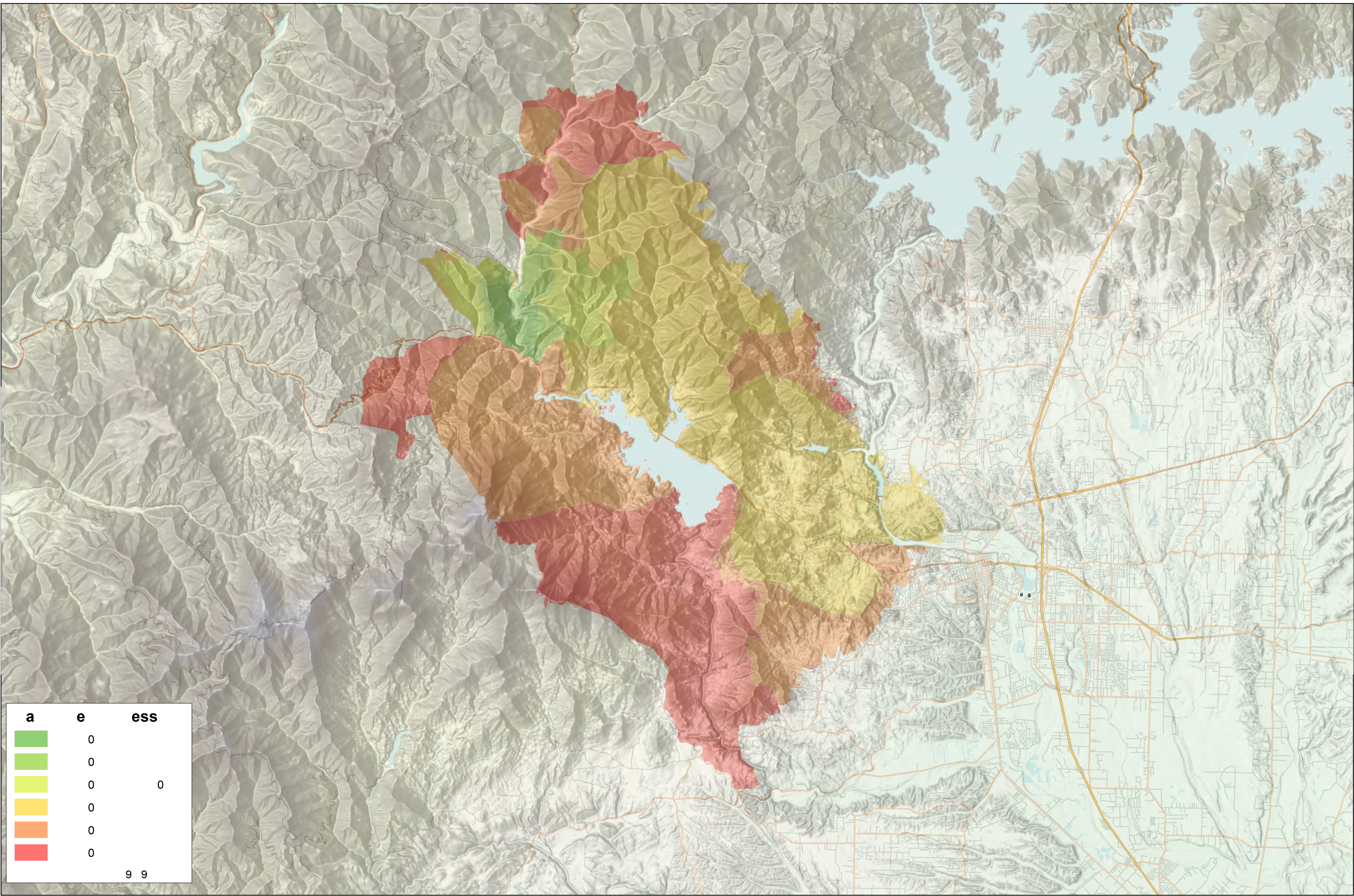


Fire Progression Map



S  
PROG  
U

# CARR INCIDENT



Fire Progression Map



S  
PROG  
U



(b) (6), (b) (7)(C), (b) (7)(F)

SEE INSTRUCTIONS FOR PROPER USE AND LOADING INFORMATION

TYPE AND LOADING INFORMATION  
WEIGHTS AND DIMENSIONS



GREY WOLF  
SELECT

GREY WOLF  
SELECT

(b) (6), (b) (7)(C), (b) (7)(F)

(b) (6), (b) (7)(C), (b) (7)(F)

RECREATIONAL VEHICLE TRAILER CARGO CARRYING CAPACITY  
Do Not Exceed 4500 LBS (2045 KG)  
THE WEIGHT OF CARGO SHOULD NOT EXCEED  
1365 kg or 3010 lbs  
CAUTION  
A 10% load of water equals 10% of 1365 kg or 136.5 kg (301 lbs)

**TIRE AND LOADING INFORMATION**  
The combined weight of Cargo should Never Exceed  
1365 Kgs or 3010 Lbs

TIRE	SIZE	COLD TIRE PRESSURE	SEE OWNER'S
FRONT	ST205/75D14C	50 PSI / 345 KPA	MANUAL FOR
REAR	ST205/75D14C	50 PSI / 345 KPA	ADDITIONAL
WHALE	ST205/75D14C	50 PSI / 345 KPA	INFORMATION

**RENSEIGNEMENTS SUR LES PNEUS ET LE CHARGEMENT**  
Le poids du chargement ne doit jamais dépasser  
1365 Kgs ou 3010 Lbs

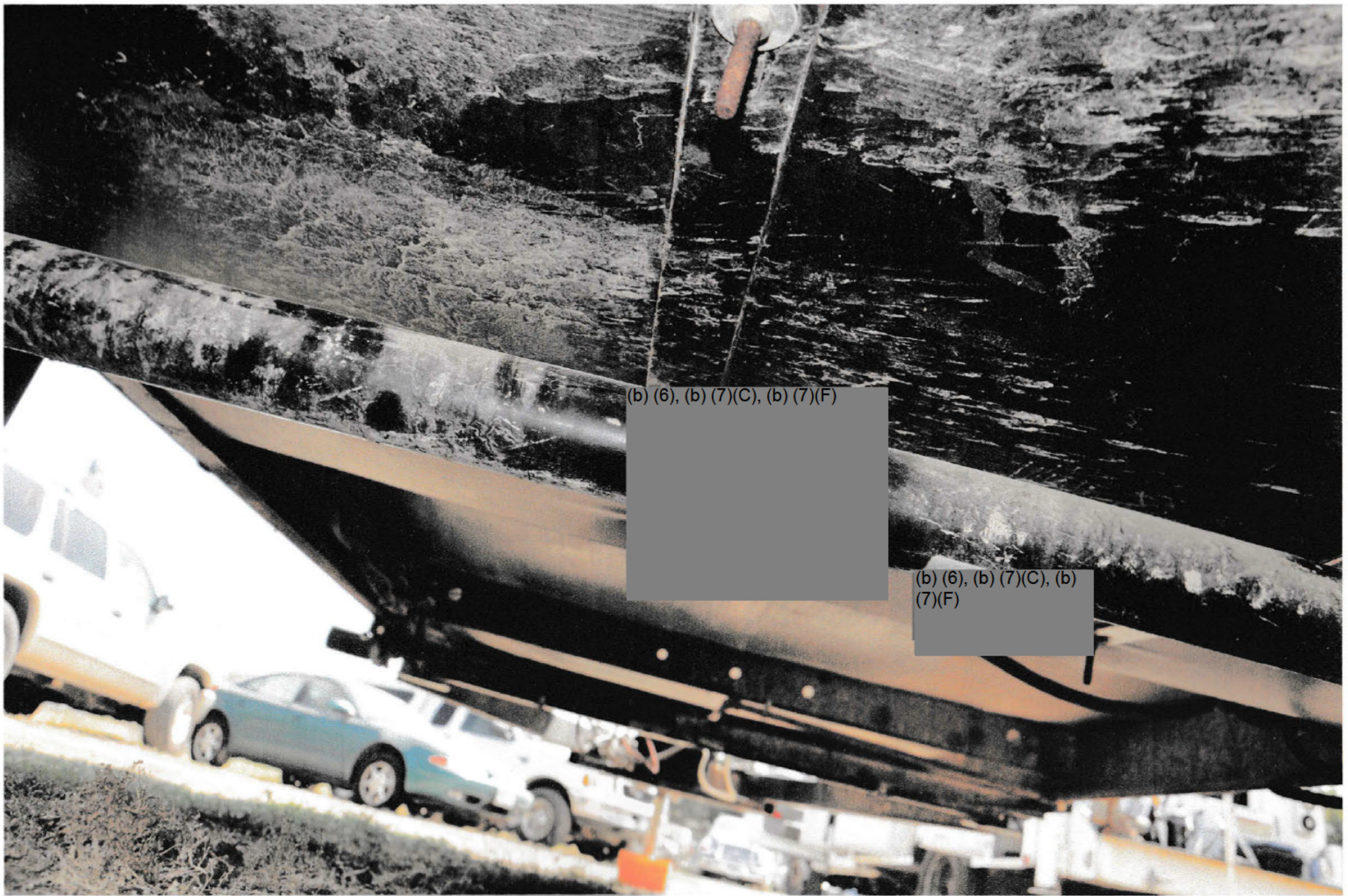
PNEU	DIMENSIONS	PRESSION DES PNEUS FROID	VÉRIFIER MANUEL
AVANT	ST205/75D14C	50 Psi ou 345 KPa	RE MANUEL
ARRIÈRE	ST205/75D14C	50 Psi ou 345 KPa	POUR PLUS D'INFORMATIONS
WHALE	ST205/75D14C	50 Psi ou 345 KPa	RENSEIGNEMENTS



Robert Components, Inc.  
(b) (6), (b) (7)(C), (b) (7)(F)




(b) (6), (b) (7)(C),  
(b) (7)(F)



(b) (6), (b) (7)(C), (b) (7)(F)

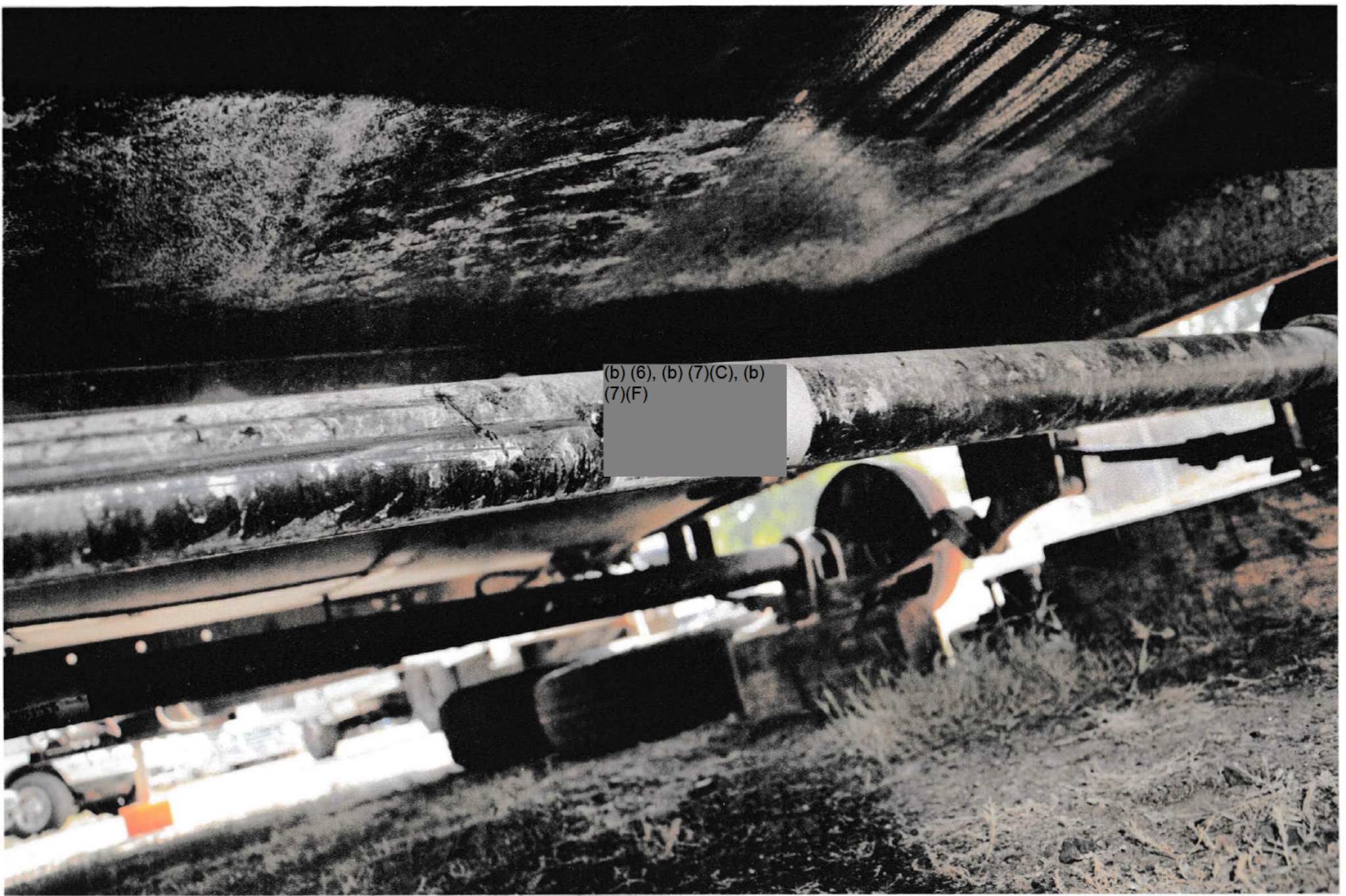
(b) (6), (b) (7)(C), (b) (7)(F)

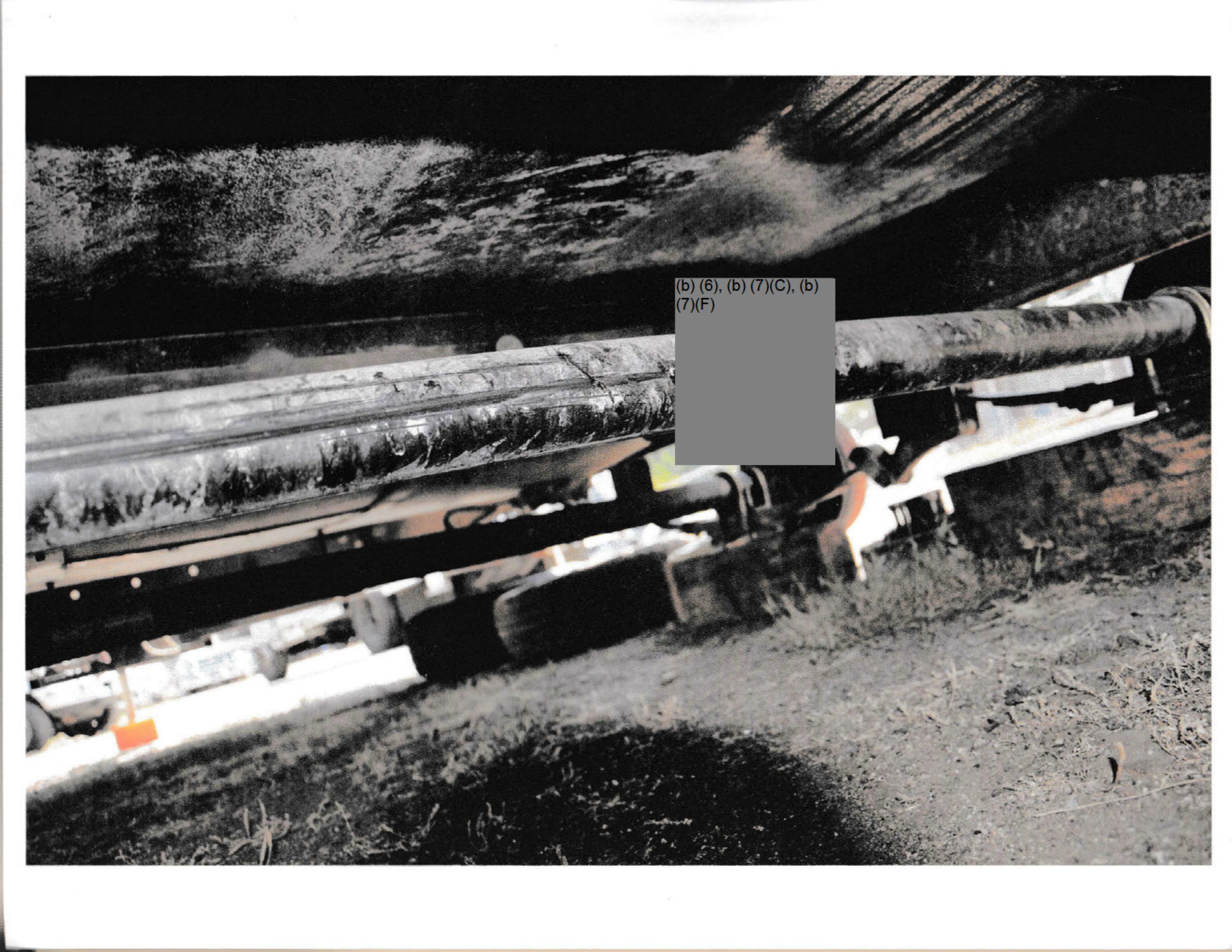




(b) (6), (b) (7)  
(C), (b) (7)(F)

(b) (6), (b) (7)(C), (b) (7)(F)





(b) (6), (b) (7)(C), (b)  
(7)(F)

(b) (6), (b) (7)(C), (b) (7)(F)

