



NATIONAL PARK SERVICE, NATIONAL CAPITAL REGION

Application for a Permit to Conduct a Demonstration or Special Event in Park Areas and a Waiver of Numerical Limitations on Demonstrations for White House Sidewalk and/or Lafayette Park

Date of Application 12/16/2017

SECTION I: Contact Information

16-1875

This is an application for a: Demonstration Special Event *Definitions on Instruction Page*

Individual/Organization 58th Presidential Inaugural Committee

Address PO Box 44093 Washington DC 20024

Phone/Mobile 202-484-3929 Fax _____ Website/Email _____

Person in charge of activity Matt Hall Fax _____

Address PO Box 44093 Washington DC20024

Day Phone 202-484-3929 Mobile _____ Email Permits@58PIC2016

One person must be listed as in charge of the activity. If different individuals are to be in charge of various activities at different locations, please list their names and contact information:

SECTION II: Lafayette Park and White House Sidewalk

Is this an application for the use of the White House Sidewalk³ or Lafayette Park? Yes No

Please be aware that a waiver of the numerical limitations is required if an expected demonstration on the White House Sidewalk will include more than 750 participants or that a demonstration in Lafayette Park will include more than 3,000 participants.

Is this an application for a waiver of the numerical limitations? Yes No

RECEIVED
 NATIONAL PARK SERVICE
 12 16 2017 3:36

SECTION III: Logistics

Set-up dates	Starting <u>12/19/2016</u>	Ending <u>1/19/2017</u>	AM/PM	
			From <u>6:00am</u>	To
Activity dates	Starting <u>1/20/2017</u>	Ending <u>1/20/2017</u>	AM/PM	
			From	To
Break-down dates	Starting <u>1/21/2017</u>	Ending <u>2/10/2017</u>	AM/PM	
			From	To <u>11:59pm</u>
Please list ALL proposed locations (include assembly and dispersal areas): <u>15th Street NW, Pennsylvania Avenue NW, Freedom Plaza, Sherman Park</u>				
Estimated maximum number of participants for EACH PARK AREA TO BE USED (Including organizers, volunteers, participants and spectators): ***SEE ATTACHED SUPPLEMENT				
Purpose of activity: ***SEE ATTACHED SUPPLEMENT. This permit application is in supplement to approved permit 16-0357.				

³ The White House Sidewalk is the sidewalk between East and West Executive Avenues, on the south side Pennsylvania Avenue, N.W.

Plan for proposed activity (include all speakers, a complete time schedule of the activity, proposed routes for any marches or parades, plans for the orderly termination and dispersal of activity that might affect regular flow of city traffic, etc.): ***SEE ATTACHED SUPPLEMENT				
Please indicate any of these items that will be used during the proposed activity:	<input checked="" type="checkbox"/> Handheld Signs/Placards Quantity:	<input checked="" type="checkbox"/> Banner/Sign(s) Size: L W H	<input type="checkbox"/> Podium <input type="checkbox"/> Distribution of Literature	<input checked="" type="checkbox"/> Tent(s) Size(s): Quantity:
	<input checked="" type="checkbox"/> Chairs TBF Quantity:	<input checked="" type="checkbox"/> Press Riser Size: L W H	<input checked="" type="checkbox"/> Lighting Equipment	<input checked="" type="checkbox"/> Portable Sound System
	<input checked="" type="checkbox"/> Tables TBF Quantity:	<input type="checkbox"/> Stage(s) Size: L W H	<input checked="" type="checkbox"/> Camera Tripod Quantity:	<input checked="" type="checkbox"/> Generator(s) TBF Quantity/Type:
<input type="checkbox"/> Jumbotrons Quantity/Size:	Estimated # of Buses:	<input checked="" type="checkbox"/> Portable Restrooms Quantity: TBF	Turf Protective Cover(s) Type: Duration: Quantity:	
Please list all other equipment (include any necessary medical/trailers,): ***SEE ATTACHED SUPPLEMENT				
Are you proposing to solicit donations: <input type="checkbox"/> Yes <input checked="" type="checkbox"/> No	Are you proposing food or beverages service ⁴ : <input checked="" type="checkbox"/> Yes <input type="checkbox"/> No	Are you proposing road closures or traffic management? If so list the roads and/or trails affected? <input checked="" type="checkbox"/> Yes <input type="checkbox"/> No		
How will the activity be advertised or publicized: <input checked="" type="checkbox"/> TV <input checked="" type="checkbox"/> Radio <input checked="" type="checkbox"/> Print <input checked="" type="checkbox"/> Flyers <input checked="" type="checkbox"/> Social media (twitter, Facebook, Tumbler etc.)		Do you propose to have commercial sponsors? If yes, how are sponsors recognized. <input type="checkbox"/> Yes <input checked="" type="checkbox"/> No		
If boxes, crates, coffins, or similar items will be used, state whether they are to be carried opened or closed, their proposed size, the materials constructed from, and their proposed contents and use: TBF				
What are your cleanup and/or recycling plans? ***SEE ATTACHED SUPPLEMENT				
How will cleanup members be identified? ***SEE ATTACHED SUPPLEMENT				

⁴Please note there is an additional Temporary Food Establishment Permit Application that must be received by NPS at least 70 days prior to proposed activity. Food service is subject to more stringent standards including being preapproved by the National Park Service and meeting Public Health standards. Only ethnic foods that are determined to be integral to the theme of the proposed event are permitted.

SECTION IV: Activity Disruption

Do you have any reason to believe or any information indicating that any individual, group or organization might seek to disrupt the activity for which this application is submitted? Yes No

If "yes," list each such individual, group or organization and contact information for each:

SECTION V: Marshals⁵ and or Volunteers

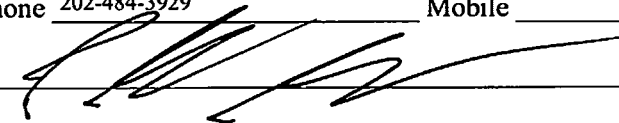
Will applicant furnish marshals and/or volunteers? <input checked="" type="checkbox"/> Yes <input type="checkbox"/> No <i>Note: Marshals are required for all waivers of numerical limitations and for demonstration activities held simultaneously on White House Sidewalk and Lafayette Park.</i>	How many? TBF
List the functions the marshals and/or volunteers are expected to perform: ***SEE ATTACHED SUPPLEMENT	
How will the marshals and/or volunteers be identified?	
Person(s) responsible for supervision of marshals and/or volunteers (for each location):	
Name(s) TBF	Locations(s) Contact information during activity (address, phone)
What communications equipment will be provided to the marshals and/or volunteers? (Include the number of walkie-talkies, mobile phone tree, bullhorns, public address systems, flashlights, etc.) TBF	
State specifically the plans for ingress and egress of the participants to and from all park areas including Lafayette Park. Please include proposed sites for loading and unloading of buses, automobiles or other forms of transportation that the participants are expected to use (supply chart or map if necessary) TBF	

Typed/Printed name of person filing application Phillip Gordon

Position of person filing application Associate Counsel Email Permits@58PIC2017.org

Address of person filing application PO Box 44093 Washington DC 20024

Fax _____ Day phone 202-484-3929 Mobile _____

Signature of person filing application 

APPLICATION IS NOT VALID UNLESS SIGNED.
ORIGINAL SIGNATURE REQUIRED
 Hand deliver or mail to: National Park Service, National Capital Region
 Permits Management, 900 Ohio Drive, S.W. Washington, DC 20024
 Open 8:00 am to 4:00 pm, Monday – Friday, Office 202-245-4715
FAXED, EMAILED, AND XEROXED APPLICATIONS ARE NOT ACCEPTED

⁵ Marshals do not act as police. They help maintain order among participants and provide information to participants and non-participants. Marshals should have knowledge of the overall activity organization.

NOTICES

Privacy Act Statement: The Privacy Act of 1974 (5 U.S.C. 552a) provides that you be furnished with the following information in connection with information required by this application. This information is being collected to allow the park manager to make a value judgment on whether or not to allow the requested use. Applicants are required to provide their social security or taxpayer identification number or activities subject to collection of fees by the National Park Service (31 U.S.C. 7701) Information from the application may be transferred to appropriate Federal, State, local agencies, when relevant to civil, criminal or regulatory investigations or prosecutions.

Paperwork Reduction Act Statement): This information is being collected subject to the Paperwork Reduction Act (44 U.S.C. 3501) to allow the park manager to make a value judgment on whether or not to allow the requested use. All applicable parts of the form must be completed. A Federal agency may not conduct or sponsor, and a person is not required to respond to, a collection of information unless it displays a currently valid OMB control number.

Estimated Burden Statement: Public reporting burden for this form is estimated to average 30 minutes per response including the time it takes to read, gather and maintain data, review instructions and complete the form. Direct comments regarding this burden estimate or any aspects of this form to the National Park Service, Special Park Uses Program Manager, 1849 C Street NW (2460), Washington, D.C. 2024



Supplemental MAP 1:

- Located on the north side of Pennsylvania Ave NW directly across from and perpendicular to 4th Street NW South of the John Marshal Park area: Press Riser 38 feet by 24 feet in dimension.
- Located on the north side of Penn Ave. at the split on the sidewalk of the U.S. District Court Building: press riser.

Supplemental MAP 2:

- Located on the South side of Pennsylvania Ave. in between 7th and 9th Streets on the sidewalk area between Penn. Ave. and the National Archives building: 3 Bleachers (16' x 48', 10' x 54', and 5' x 54') and a 4-tier Press Riser (32' x 24').
- Located on the North side of Pennsylvania Ave. NW on the corner of 7th and Penn. Ave.: one Parade Announcing Stand.
- Located on the North side of Pennsylvania Ave. NW in between 7th and 9th Streets in front of the U.S. Navy Memorial: PIC press riser.

Supplemental MAP 3:

- Located on the Northwest corner of 9th Street and Pennsylvania Ave. NW: PIC press riser.
- Located on the Southeast corner of 10 Street and Pennsylvania Ave. NW: PIC press riser.
- Located on the South side of Pennsylvania Ave. between 10th and 12th Streets on the sidewalk in front of the Old Post Office (a.k.a. TRUMP International Hotel): 2 Bleachers (7' x 90' and 10' x 84').
- Located on the North side of Pennsylvania Ave. between 11th and 12th Streets: 5 PIC press risers and on the North corner of 11th Street and Pan. Ave.: Parade Announcing Stand.

Supplemental MAP 4:

- Located on the North side of Pennsylvania Ave. sidewalk between 12th and 13th Streets: 2 Bleachers (4' x 66' and 4' x 90').
- Located on the sidewalk on the South side of Pennsylvania Ave. between 12th and 13th ½ Streets directly across from 13th Street: 4 Bleachers (10' x 30', 19' x 48', 10' x 30', and 7' x 24').

Supplemental Map 5:

- Located on 15th St. NW, just north of Alexander Hamilton Place NW. On the west side of the street, one bleacher 5' x 114'.

- Located on 15th St. NW, between Alexander Hamilton Place and E St. NW. On the west side of the street, five bleachers. Three 4' x 30' and two 4' x 36'.
- Located on 15th St. NW, between F St. NW and Pennsylvania Avenue NW. On the east side of the street, five bleachers. One 13' x 30', one 5' x 45', one 5' x 30', one 5' x 12', and one 5' x 24'.
- Located on Pennsylvania Avenue NW, between 15th St. NW and 14th St. NW. On the south side of the street, two bleachers and one announcer platform. One bleacher 4' x 120' and one 4' x 150'. The announcer stand size TBD. On the north side of the street, one press stand size TBD.
- Located on Pennsylvania Avenue NW, between 14th St. NW and 13th St. NW. On the north side of the street, in Freedom Plaza, two bleachers, one press riser, and one announcer stand. Both bleachers 22' x 108'. The press riser 48' x 32'. The announcer stand, size TBD

Supplemental Map 6:

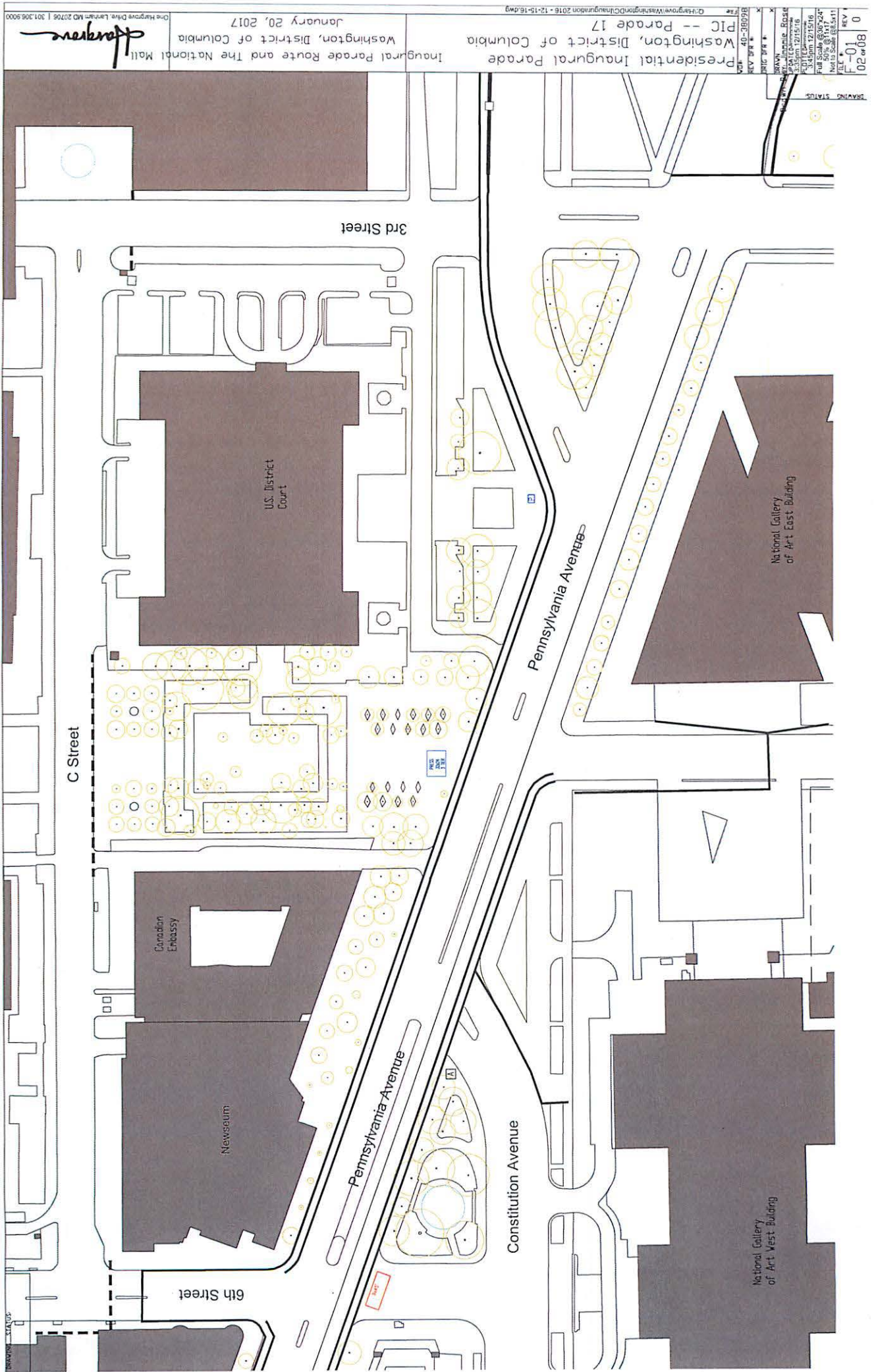
- Located on New York Avenue NW, at the intersection of Pennsylvania Ave NW and 15th Street NW. One bleacher 9' x 45' placed horizontally in the intersection.
- Located on 15th St. NW, directly on the East side of the Department of Treasury building. On the west side of the street, four bleachers. One 5' x 114', one 4' x 174', one 4' x 36', and one 4' x 66'. On the east side of the street, between F St. NW and G St. NW, seven bleachers each 7' x 15'.

Supplemental Map 7:

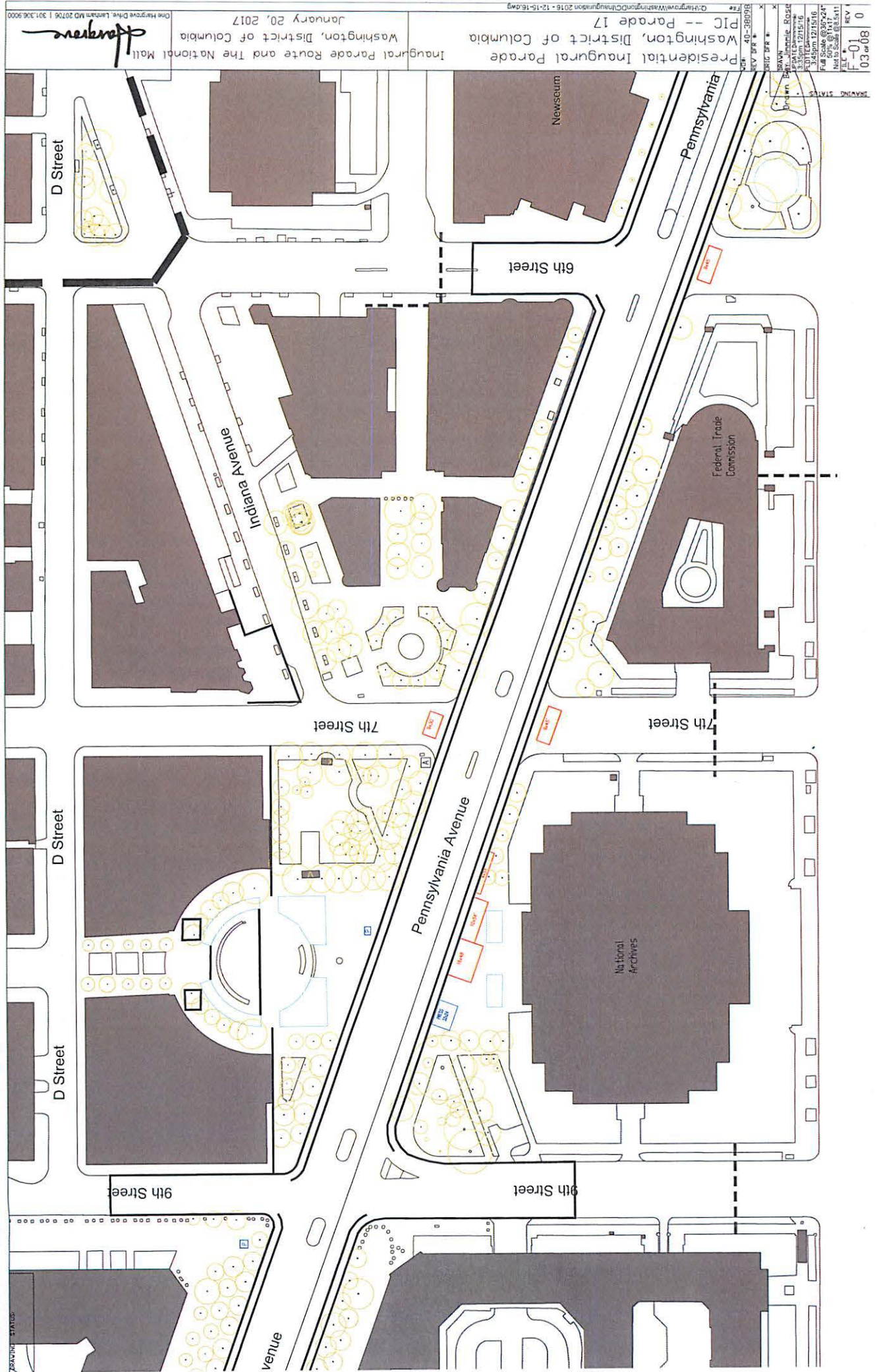
- Located on Pennsylvania Avenue NW between 17th St. NW and Jackson Place NW. On the south side of the street, four bleachers. One 9' x 30', two 9' x 45', and one, size TBD. On the north side of the street, six bleachers, size TBD.
- Located on Pennsylvania Ave NW between Jackson Place NW and Madison Place NW. On the south side of the street, four bleachers. Two on each side of the President's Reviewing Stand, size TBD. On the north side of the street, three bleachers. One on each side of the Press Riser, and one smaller bleacher directly in front of the Press Riser. The bleachers on each side of the Press Riser will be size TBD. The bleacher in front of the Press Riser will be size TBD.
- Located on Pennsylvania Ave NW between Madison Place NW and 15th Street NW. On the south side of the street, two bleachers. One size TBD and the other size TBD. On the north side of the street, six bleachers. Four size TBD and two size TBD.

* Supplemental Attachment to the Permit Application for the 2017 Presidential Inaugural for Pennsylvania Avenue National Historic Site and Sherman Park for December 7, 2016 – February 10, 2017. The areas outlined in this supplement are in addition to those areas previously reserved by permit including: 16-0357.

Supp. Map 1

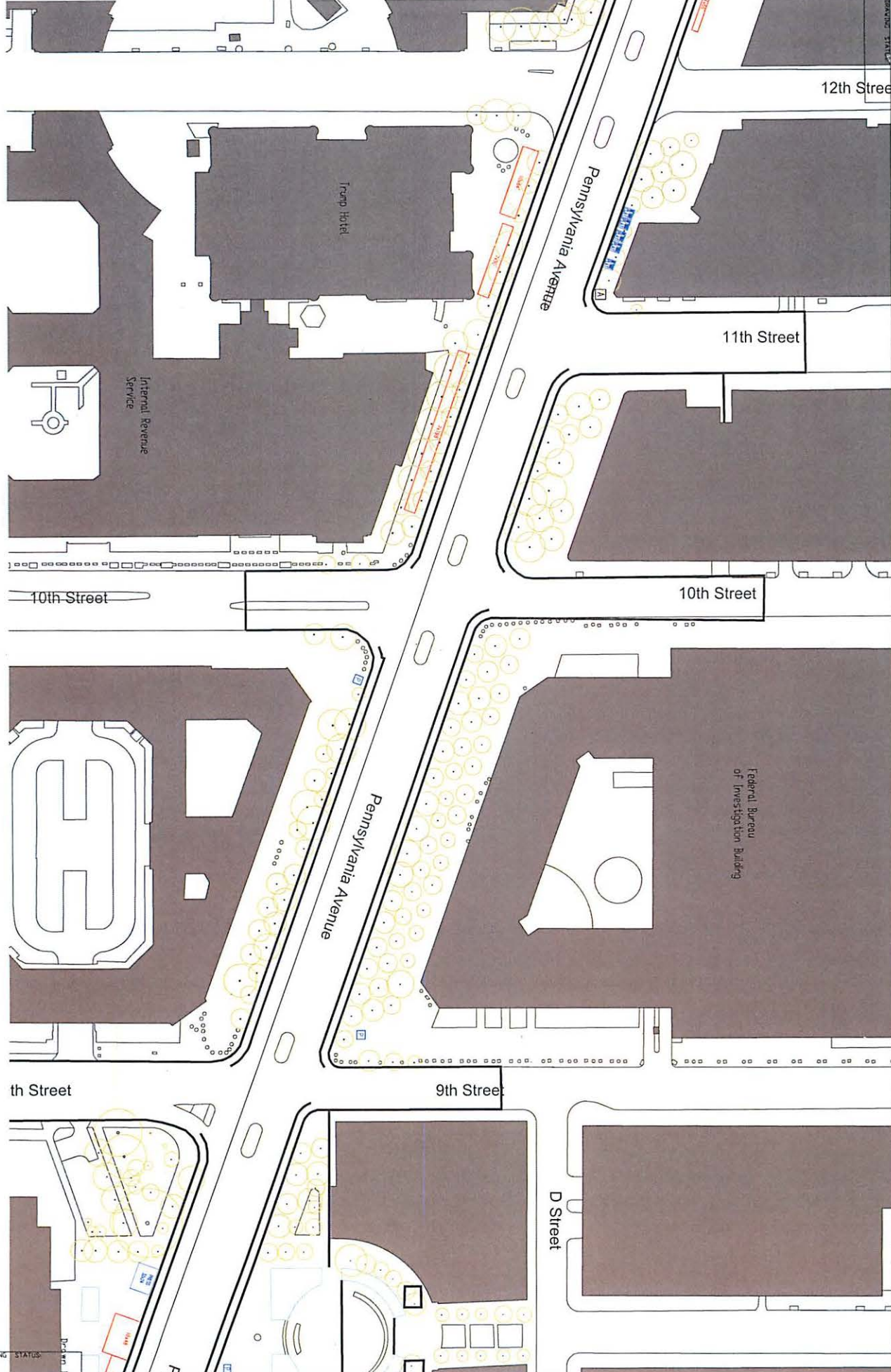


Supp. Map 2



40-38098
 REV 01
 REV 02
 REV 03
 REV 04
 REV 05
 REV 06
 REV 07
 REV 08
 REV 09
 REV 10
 REV 11
 REV 12
 REV 13
 REV 14
 REV 15
 REV 16
 REV 17
 REV 18
 REV 19
 REV 20
 REV 21
 REV 22
 REV 23
 REV 24
 REV 25
 REV 26
 REV 27
 REV 28
 REV 29
 REV 30
 REV 31
 REV 32
 REV 33
 REV 34
 REV 35
 REV 36
 REV 37
 REV 38
 REV 39
 REV 40
 REV 41
 REV 42
 REV 43
 REV 44
 REV 45
 REV 46
 REV 47
 REV 48
 REV 49
 REV 50
 REV 51
 REV 52
 REV 53
 REV 54
 REV 55
 REV 56
 REV 57
 REV 58
 REV 59
 REV 60
 REV 61
 REV 62
 REV 63
 REV 64
 REV 65
 REV 66
 REV 67
 REV 68
 REV 69
 REV 70
 REV 71
 REV 72
 REV 73
 REV 74
 REV 75
 REV 76
 REV 77
 REV 78
 REV 79
 REV 80
 REV 81
 REV 82
 REV 83
 REV 84
 REV 85
 REV 86
 REV 87
 REV 88
 REV 89
 REV 90
 REV 91
 REV 92
 REV 93
 REV 94
 REV 95
 REV 96
 REV 97
 REV 98
 REV 99
 REV 100
 REV 101
 REV 102
 REV 103
 REV 104
 REV 105
 REV 106
 REV 107
 REV 108
 REV 109
 REV 110
 REV 111
 REV 112
 REV 113
 REV 114
 REV 115
 REV 116
 REV 117
 REV 118
 REV 119
 REV 120
 REV 121
 REV 122
 REV 123
 REV 124
 REV 125
 REV 126
 REV 127
 REV 128
 REV 129
 REV 130
 REV 131
 REV 132
 REV 133
 REV 134
 REV 135
 REV 136
 REV 137
 REV 138
 REV 139
 REV 140
 REV 141
 REV 142
 REV 143
 REV 144
 REV 145
 REV 146
 REV 147
 REV 148
 REV 149
 REV 150
 REV 151
 REV 152
 REV 153
 REV 154
 REV 155
 REV 156
 REV 157
 REV 158
 REV 159
 REV 160
 REV 161
 REV 162
 REV 163
 REV 164
 REV 165
 REV 166
 REV 167
 REV 168
 REV 169
 REV 170
 REV 171
 REV 172
 REV 173
 REV 174
 REV 175
 REV 176
 REV 177
 REV 178
 REV 179
 REV 180
 REV 181
 REV 182
 REV 183
 REV 184
 REV 185
 REV 186
 REV 187
 REV 188
 REV 189
 REV 190
 REV 191
 REV 192
 REV 193
 REV 194
 REV 195
 REV 196
 REV 197
 REV 198
 REV 199
 REV 200
 REV 201
 REV 202
 REV 203
 REV 204
 REV 205
 REV 206
 REV 207
 REV 208
 REV 209
 REV 210
 REV 211
 REV 212
 REV 213
 REV 214
 REV 215
 REV 216
 REV 217
 REV 218
 REV 219
 REV 220
 REV 221
 REV 222
 REV 223
 REV 224
 REV 225
 REV 226
 REV 227
 REV 228
 REV 229
 REV 230
 REV 231
 REV 232
 REV 233
 REV 234
 REV 235
 REV 236
 REV 237
 REV 238
 REV 239
 REV 240
 REV 241
 REV 242
 REV 243
 REV 244
 REV 245
 REV 246
 REV 247
 REV 248
 REV 249
 REV 250
 REV 251
 REV 252
 REV 253
 REV 254
 REV 255
 REV 256
 REV 257
 REV 258
 REV 259
 REV 260
 REV 261
 REV 262
 REV 263
 REV 264
 REV 265
 REV 266
 REV 267
 REV 268
 REV 269
 REV 270
 REV 271
 REV 272
 REV 273
 REV 274
 REV 275
 REV 276
 REV 277
 REV 278
 REV 279
 REV 280
 REV 281
 REV 282
 REV 283
 REV 284
 REV 285
 REV 286
 REV 287
 REV 288
 REV 289
 REV 290
 REV 291
 REV 292
 REV 293
 REV 294
 REV 295
 REV 296
 REV 297
 REV 298
 REV 299
 REV 300
 REV 301
 REV 302
 REV 303
 REV 304
 REV 305
 REV 306
 REV 307
 REV 308
 REV 309
 REV 310
 REV 311
 REV 312
 REV 313
 REV 314
 REV 315
 REV 316
 REV 317
 REV 318
 REV 319
 REV 320
 REV 321
 REV 322
 REV 323
 REV 324
 REV 325
 REV 326
 REV 327
 REV 328
 REV 329
 REV 330
 REV 331
 REV 332
 REV 333
 REV 334
 REV 335
 REV 336
 REV 337
 REV 338
 REV 339
 REV 340
 REV 341
 REV 342
 REV 343
 REV 344
 REV 345
 REV 346
 REV 347
 REV 348
 REV 349
 REV 350
 REV 351
 REV 352
 REV 353
 REV 354
 REV 355
 REV 356
 REV 357
 REV 358
 REV 359
 REV 360
 REV 361
 REV 362
 REV 363
 REV 364
 REV 365
 REV 366
 REV 367
 REV 368
 REV 369
 REV 370
 REV 371
 REV 372
 REV 373
 REV 374
 REV 375
 REV 376
 REV 377
 REV 378
 REV 379
 REV 380
 REV 381
 REV 382
 REV 383
 REV 384
 REV 385
 REV 386
 REV 387
 REV 388
 REV 389
 REV 390
 REV 391
 REV 392
 REV 393
 REV 394
 REV 395
 REV 396
 REV 397
 REV 398
 REV 399
 REV 400
 REV 401
 REV 402
 REV 403
 REV 404
 REV 405
 REV 406
 REV 407
 REV 408
 REV 409
 REV 410
 REV 411
 REV 412
 REV 413
 REV 414
 REV 415
 REV 416
 REV 417
 REV 418
 REV 419
 REV 420
 REV 421
 REV 422
 REV 423
 REV 424
 REV 425
 REV 426
 REV 427
 REV 428
 REV 429
 REV 430
 REV 431
 REV 432
 REV 433
 REV 434
 REV 435
 REV 436
 REV 437
 REV 438
 REV 439
 REV 440
 REV 441
 REV 442
 REV 443
 REV 444
 REV 445
 REV 446
 REV 447
 REV 448
 REV 449
 REV 450
 REV 451
 REV 452
 REV 453
 REV 454
 REV 455
 REV 456
 REV 457
 REV 458
 REV 459
 REV 460
 REV 461
 REV 462
 REV 463
 REV 464
 REV 465
 REV 466
 REV 467
 REV 468
 REV 469
 REV 470
 REV 471
 REV 472
 REV 473
 REV 474
 REV 475
 REV 476
 REV 477
 REV 478
 REV 479
 REV 480
 REV 481
 REV 482
 REV 483
 REV 484
 REV 485
 REV 486
 REV 487
 REV 488
 REV 489
 REV 490
 REV 491
 REV 492
 REV 493
 REV 494
 REV 495
 REV 496
 REV 497
 REV 498
 REV 499
 REV 500
 REV 501
 REV 502
 REV 503
 REV 504
 REV 505
 REV 506
 REV 507
 REV 508
 REV 509
 REV 510
 REV 511
 REV 512
 REV 513
 REV 514
 REV 515
 REV 516
 REV 517
 REV 518
 REV 519
 REV 520
 REV 521
 REV 522
 REV 523
 REV 524
 REV 525
 REV 526
 REV 527
 REV 528
 REV 529
 REV 530
 REV 531
 REV 532
 REV 533
 REV 534
 REV 535
 REV 536
 REV 537
 REV 538
 REV 539
 REV 540
 REV 541
 REV 542
 REV 543
 REV 544
 REV 545
 REV 546
 REV 547
 REV 548
 REV 549
 REV 550
 REV 551
 REV 552
 REV 553
 REV 554
 REV 555
 REV 556
 REV 557
 REV 558
 REV 559
 REV 560
 REV 561
 REV 562
 REV 563
 REV 564
 REV 565
 REV 566
 REV 567
 REV 568
 REV 569
 REV 570
 REV 571
 REV 572
 REV 573
 REV 574
 REV 575
 REV 576
 REV 577
 REV 578
 REV 579
 REV 580
 REV 581
 REV 582
 REV 583
 REV 584
 REV 585
 REV 586
 REV 587
 REV 588
 REV 589
 REV 590
 REV 591
 REV 592
 REV 593
 REV 594
 REV 595
 REV 596
 REV 597
 REV 598
 REV 599
 REV 600
 REV 601
 REV 602
 REV 603
 REV 604
 REV 605
 REV 606
 REV 607
 REV 608
 REV 609
 REV 610
 REV 611
 REV 612
 REV 613
 REV 614
 REV 615
 REV 616
 REV 617
 REV 618
 REV 619
 REV 620
 REV 621
 REV 622
 REV 623
 REV 624
 REV 625
 REV 626
 REV 627
 REV 628
 REV 629
 REV 630
 REV 631
 REV 632
 REV 633
 REV 634
 REV 635
 REV 636
 REV 637
 REV 638
 REV 639
 REV 640
 REV 641
 REV 642
 REV 643
 REV 644
 REV 645
 REV 646
 REV 647
 REV 648
 REV 649
 REV 650
 REV 651
 REV 652
 REV 653
 REV 654
 REV 655
 REV 656
 REV 657
 REV 658
 REV 659
 REV 660
 REV 661
 REV 662
 REV 663
 REV 664
 REV 665
 REV 666
 REV 667
 REV 668
 REV 669
 REV 670
 REV 671
 REV 672
 REV 673
 REV 674
 REV 675
 REV 676
 REV 677
 REV 678
 REV 679
 REV 680
 REV 681
 REV 682
 REV 683
 REV 684
 REV 685
 REV 686
 REV 687
 REV 688
 REV 689
 REV 690
 REV 691
 REV 692
 REV 693
 REV 694
 REV 695
 REV 696
 REV 697
 REV 698
 REV 699
 REV 700
 REV 701
 REV 702
 REV 703
 REV 704
 REV 705
 REV 706
 REV 707
 REV 708
 REV 709
 REV 710
 REV 711
 REV 712
 REV 713
 REV 714
 REV 715
 REV 716
 REV 717
 REV 718
 REV 719
 REV 720
 REV 721
 REV 722
 REV 723
 REV 724
 REV 725
 REV 726
 REV 727
 REV 728
 REV 729
 REV 730
 REV 731
 REV 732
 REV 733
 REV 734
 REV 735
 REV 736
 REV 737
 REV 738
 REV 739
 REV 740
 REV 741
 REV 742
 REV 743
 REV 744
 REV 745
 REV 746
 REV 747
 REV 748
 REV 749
 REV 750
 REV 751
 REV 752
 REV 753
 REV 754
 REV 755
 REV 756
 REV 757
 REV 758
 REV 759
 REV 760
 REV 761
 REV 762
 REV 763
 REV 764
 REV 765
 REV 766
 REV 767
 REV 768
 REV 769
 REV 770
 REV 771
 REV 772
 REV 773
 REV 774
 REV 775
 REV 776
 REV 777
 REV 778
 REV 779
 REV 780
 REV 781
 REV 782
 REV 783
 REV 784
 REV 785
 REV 786
 REV 787
 REV 788
 REV 789
 REV 790
 REV 791
 REV 792
 REV 793
 REV 794
 REV 795
 REV 796
 REV 797
 REV 798
 REV 799
 REV 800
 REV 801
 REV 802
 REV 803
 REV 804
 REV 805
 REV 806
 REV 807
 REV 808
 REV 809
 REV 810
 REV 811
 REV 812
 REV 813
 REV 814
 REV 815
 REV 816
 REV 817
 REV 818
 REV 819
 REV 820
 REV 821
 REV 822
 REV 823
 REV 824
 REV 825
 REV 826
 REV 827
 REV 828
 REV 829
 REV 830
 REV 831
 REV 832
 REV 833
 REV 834
 REV 835
 REV 836
 REV 837
 REV 838
 REV 839
 REV 840
 REV 841
 REV 842
 REV 843
 REV 844
 REV 845
 REV 846
 REV 847
 REV 848
 REV 849
 REV 850
 REV 851
 REV 852
 REV 853
 REV 854
 REV 855
 REV 856
 REV 857
 REV 858
 REV 859
 REV 860
 REV 861
 REV 862
 REV 863
 REV 864
 REV 865
 REV 866
 REV 867
 REV 868
 REV 869
 REV 870
 REV 871
 REV 872
 REV 873
 REV 874
 REV 875
 REV 876
 REV 877
 REV 878
 REV 879
 REV 880
 REV 881
 REV 882
 REV 883
 REV 884
 REV 885
 REV 886
 REV 887
 REV 888
 REV 889
 REV 890
 REV 891
 REV 892
 REV 893
 REV 894
 REV 895
 REV 896
 REV 897
 REV 898
 REV 899
 REV 900
 REV 901
 REV 902
 REV 903
 REV 904
 REV 905
 REV 906
 REV 907
 REV 908
 REV 909
 REV 910
 REV 911
 REV 912
 REV 913
 REV 914
 REV 915
 REV 916
 REV 917
 REV 918
 REV 919
 REV 920
 REV 921
 REV 922
 REV 923
 REV 924
 REV 925
 REV 926
 REV 927
 REV 928
 REV 929
 REV 930
 REV 931
 REV 932
 REV 933
 REV 934
 REV 935
 REV 936
 REV 937
 REV 938
 REV 939
 REV 940
 REV 941
 REV 942
 REV 943
 REV 944
 REV 945
 REV 946
 REV 947
 REV 948
 REV 949
 REV 950
 REV 951
 REV 952
 REV 953
 REV 954
 REV 955
 REV 956
 REV 957
 REV 958
 REV 959
 REV 960
 REV 961
 REV 962
 REV 963
 REV 964
 REV 965
 REV 966
 REV 967
 REV 968
 REV 969
 REV 970
 REV 971
 REV 972
 REV 973
 REV 974
 REV 975
 REV 976
 REV 977
 REV 978
 REV 979
 REV 980
 REV 981
 REV 982
 REV 983
 REV 984
 REV 985
 REV 986
 REV 987
 REV 988
 REV 989
 REV 990
 REV 991
 REV 992
 REV 993
 REV 994
 REV 995
 REV 996
 REV 997
 REV 998
 REV 999
 REV 1000
 REV 1001
 REV 1002
 REV 1003
 REV 1004
 REV 1005
 REV 1006
 REV 1007
 REV 1008
 REV 1009
 REV 1010
 REV 1011
 REV 1012
 REV 1013
 REV 1014
 REV 1015
 REV 1016
 REV 1017
 REV 1018
 REV 1019
 REV 1020
 REV 1021
 REV 1022
 REV 1023
 REV 1024
 REV 1025
 REV 1026
 REV 1027
 REV 1028
 REV 1029
 REV 1030
 REV 1031
 REV 1032
 REV 1033
 REV 1034
 REV 1035
 REV 1036
 REV 1037
 REV 1038
 REV 1039
 REV 1040
 REV 1041
 REV 1042
 REV 1043
 REV 1044
 REV 1045
 REV 1046
 REV 1047
 REV 1048
 REV 1049
 REV 1050
 REV 1051
 REV 1052
 REV 1053
 REV 1054
 REV 1055
 REV 1056
 REV 1057
 REV 1058
 REV 1059
 REV 1060
 REV 1061
 REV 1062
 REV 1063
 REV 1064
 REV 1065
 REV 1066
 REV 1067
 REV 1068
 REV 1069
 REV 1070
 REV 1071
 REV 1072
 REV 1073
 REV 1074
 REV 1075
 REV 1076
 REV 1077
 REV 1078
 REV 1079
 REV 1080
 REV 1081
 REV 1082
 REV 1083
 REV 1084
 REV 1085
 REV 1086
 REV 1087
 REV 1088
 REV 1089
 REV 1090
 REV 1091
 REV 1092
 REV 1093
 REV 1094
 REV 1095
 REV 1096
 REV 1097
 REV 1098
 REV 1099
 REV 1100
 REV 1101
 REV 1102
 REV 1103
 REV 1104
 REV 1105
 REV 1106
 REV 1107
 REV 1108
 REV 1109
 REV 1110
 REV 1111
 REV 1112
 REV 1113
 REV 1114
 REV 1115
 REV 1116
 REV 1117
 REV 1118
 REV 1119
 REV 1120
 REV 1121
 REV 1122
 REV 1123
 REV 1124
 REV 1125
 REV 1126
 REV 1127
 REV 1128
 REV 1129
 REV 1130
 REV 1131
 REV 1132
 REV 1133
 REV 1134
 REV 1135
 REV 1136
 REV 1137
 REV 1138
 REV 1139
 REV 1140
 REV 1141
 REV 1142
 REV 1143
 REV 1144
 REV 1145
 REV 1146
 REV 1147
 REV 1148
 REV 1149
 REV 1150
 REV 1151
 REV 1152
 REV 1153
 REV 1154
 REV 1155
 REV 1156
 REV 1157
 REV 1158
 REV 1159
 REV 1160
 REV 1161
 REV 1162
 REV 1163
 REV 1164
 REV 1165
 REV 1166
 REV 1167
 REV 1168
 REV 1169
 REV 1170
 REV 1171
 REV 1172
 REV 1173
 REV 1174
 REV 1175
 REV 1176
 REV 1177
 REV 1178
 REV 1179
 REV 1180
 REV 1181
 REV 1182
 REV 1183
 REV 1184
 REV 1185
 REV 1186
 REV 1187
 REV 1188
 REV 1189
 REV 1190
 REV 1191
 REV 1192
 REV 1193
 REV 1194
 REV 1195
 REV 1196
 REV 1197
 REV 1198
 REV 1199
 REV 1200
 REV 1201
 REV 1202
 REV 1203
 REV 1204
 REV 1205
 REV 1206
 REV 1207
 REV 1208
 REV 1209
 REV 1210
 REV 1211
 REV 1212
 REV 1213
 REV 1214
 REV 1215
 REV 1216
 REV 1217
 REV 1218
 REV 1219
 REV 1220
 REV 1221
 REV 1222
 REV 1223
 REV 1224
 REV 1225
 REV 1226
 REV 1227
 REV 1228
 REV 1229
 REV 1230
 REV 1231
 REV 1232
 REV 1233
 REV 1234
 REV 1235
 REV 1236
 REV 1237
 REV 1238
 REV 1239
 REV 1240
 REV 1241
 REV 1242
 REV 1243
 REV 1244
 REV 1245
 REV 1246
 REV 1247
 REV 1248
 REV 1249
 REV 1250
 REV 1251
 REV 1252
 REV 1253
 REV 1254
 REV 1255
 REV 1256
 REV 1257
 REV 1258
 REV 1259
 REV 1260
 REV 1261
 REV 1262
 REV 1263
 REV 1264
 REV 1265
 REV 1266
 REV 1267
 REV 1268
 REV 1269
 REV 1270
 REV 1271
 REV 1272
 REV 1273
 REV 1274
 REV 1275
 REV 1276
 REV 1277
 REV 1278
 REV 1279
 REV 1280
 REV 1281
 REV 1282
 REV 1283
 REV 1284
 REV 1285
 REV 1286
 REV 1287
 REV 1288
 REV 1289
 REV 1290
 REV 1291
 REV 1292
 REV 1293
 REV 1294
 REV 1295
 REV 1296
 REV 1297
 REV 1298
 REV 1299
 REV 1300
 REV 1301
 REV 1302
 REV 1303
 REV 1304

Supp. Map 3



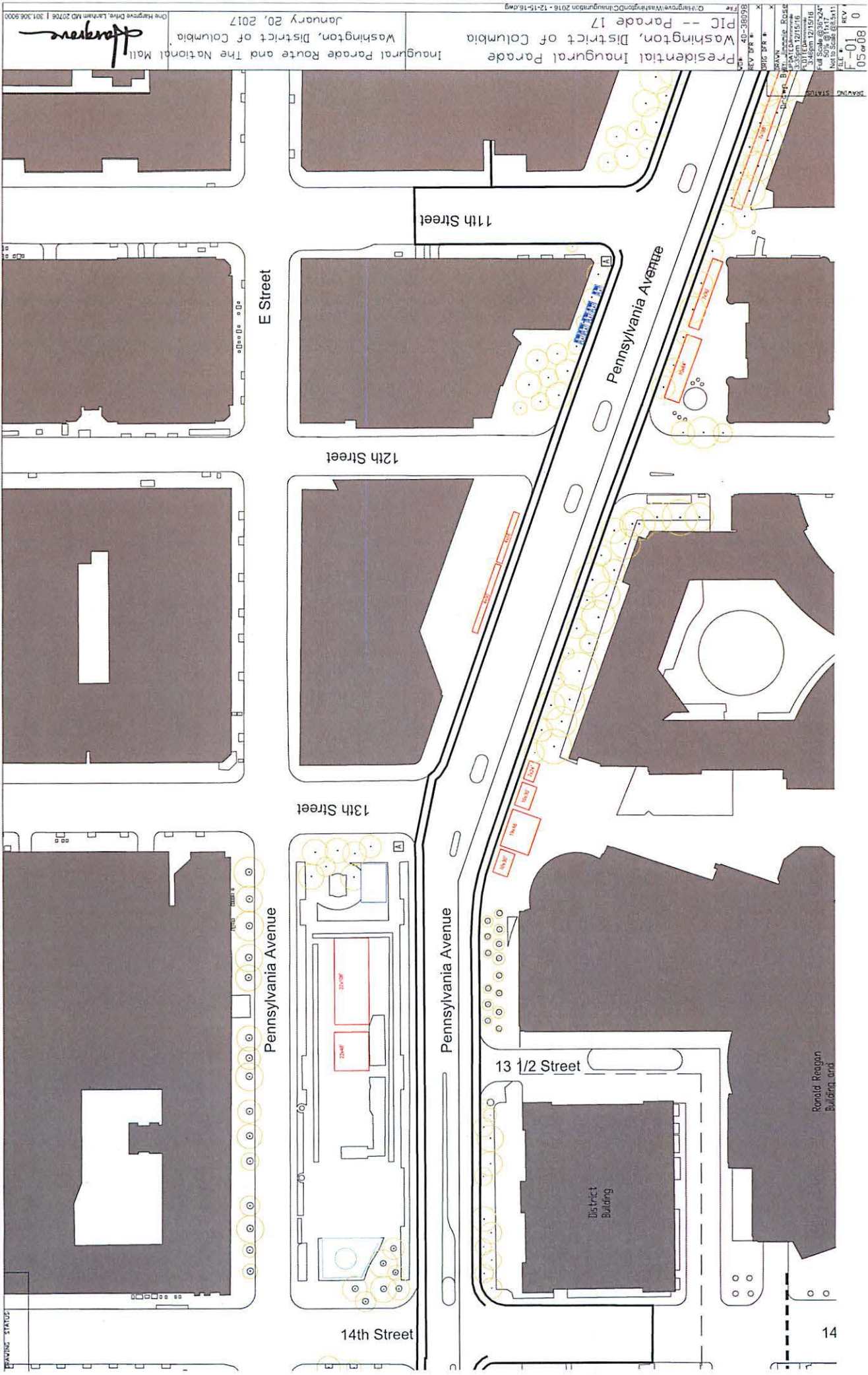
DRIVING STATUS:	0
SCALE:	1" = 100'
DATE:	04/08
REV:	0
FILE:	Q:\Hargrove\WashingtonDC\Inauguration 2016 - 12-15-16.dwg

Presidential Inaugural Parade
 Washington, District of Columbia
 PIC -- Parade 17

Inaugural Parade Route and The National Mall
 Washington, District of Columbia
 January 20, 2017

Hargrove
 One Hargrove Drive, Lanham MD 20706 | 301.306.9000

Supp- Map 4



Presidential Inaugural Parade
 Washington, District of Columbia
 PIC -- Parade 17
 January 20, 2017
 Inaugural Parade Route and The National Mall
 Washington, District of Columbia
 One Maryland Drive Lanham MD 20706 | 301.306.5000
 Hargrove

REV	DATE	DESCRIPTION
01	12/15/16	Initial Issue
02	12/15/16	Revised
03	12/15/16	Revised
04	12/15/16	Revised
05	01/17/17	Revised
06	01/17/17	Revised
07	01/17/17	Revised
08	01/17/17	Revised
09	01/17/17	Revised
10	01/17/17	Revised
11	01/17/17	Revised
12	01/17/17	Revised
13	01/17/17	Revised
14	01/17/17	Revised
15	01/17/17	Revised
16	01/17/17	Revised
17	01/17/17	Revised
18	01/17/17	Revised
19	01/17/17	Revised
20	01/17/17	Revised
21	01/17/17	Revised
22	01/17/17	Revised
23	01/17/17	Revised
24	01/17/17	Revised
25	01/17/17	Revised
26	01/17/17	Revised
27	01/17/17	Revised
28	01/17/17	Revised
29	01/17/17	Revised
30	01/17/17	Revised
31	01/17/17	Revised
32	01/17/17	Revised
33	01/17/17	Revised
34	01/17/17	Revised
35	01/17/17	Revised
36	01/17/17	Revised
37	01/17/17	Revised
38	01/17/17	Revised
39	01/17/17	Revised
40	01/17/17	Revised
41	01/17/17	Revised
42	01/17/17	Revised
43	01/17/17	Revised
44	01/17/17	Revised
45	01/17/17	Revised
46	01/17/17	Revised
47	01/17/17	Revised
48	01/17/17	Revised
49	01/17/17	Revised
50	01/17/17	Revised

Ronald Reagan Building and

District Building

Pennsylvania Avenue

Pennsylvania Avenue

Pennsylvania Avenue

E Street

11th Street

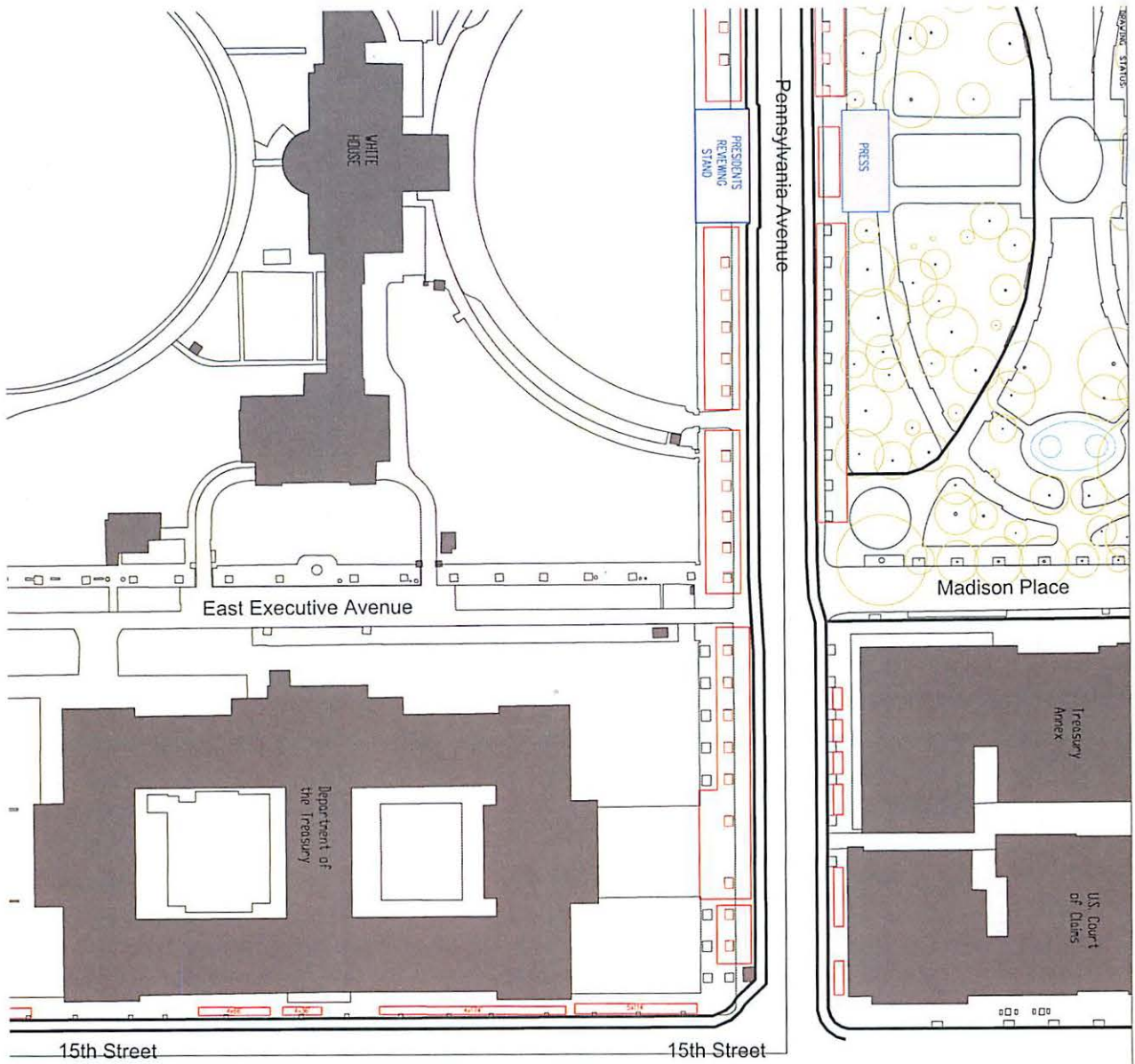
12th Street

13th Street

13 1/2 Street

14th Street

Supp. Maps



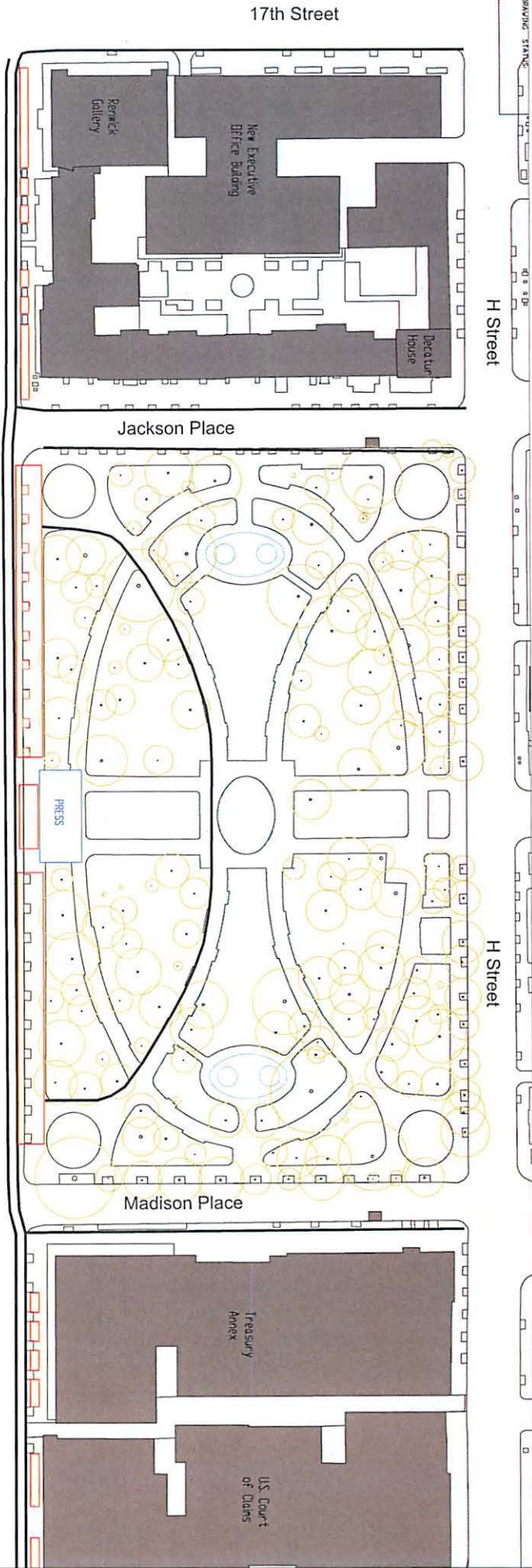
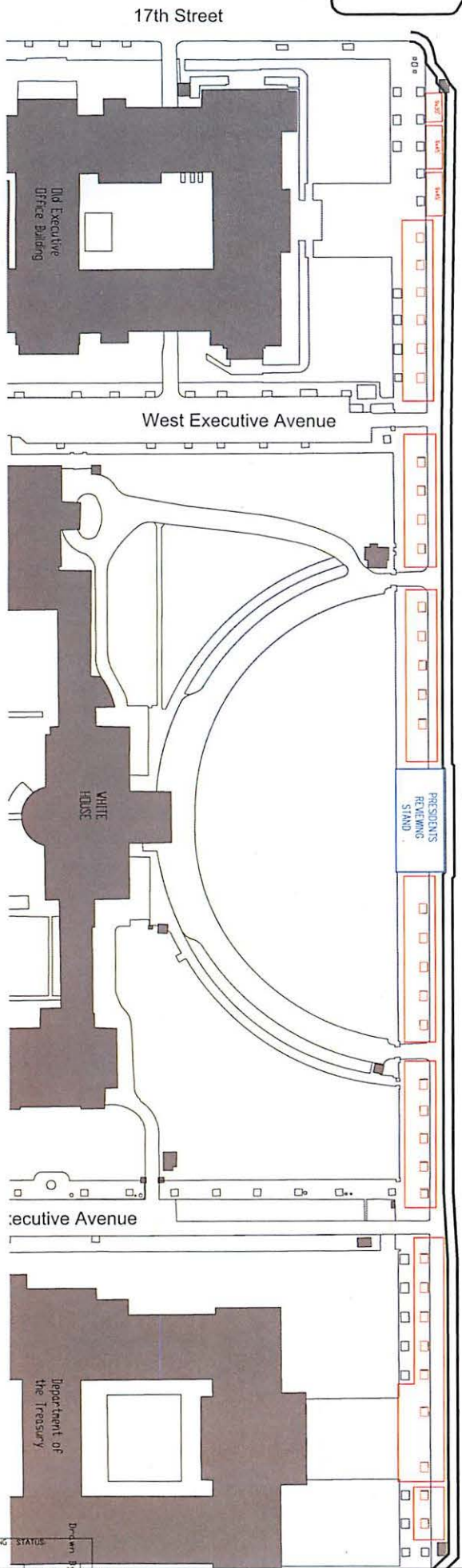
DRAWING	STATUS
01	REV
07	08
0	

Presidential Inaugural Parade
Washington, District of Columbia
PIC -- Parade 17

Inaugural Parade Route and The National Mall
Washington, District of Columbia
January 20, 2017

Hargrove
One Hargrove Drive, Lanham MD 20706 | 301.306.9000

Supp. Map 7



DRAWING STATUS	REV	DATE	BY	CHK
01	0			
08/08	0			

Presidential Inaugural Parade
 Washington, District of Columbia
 PIC -- Parade 17

Inaugural Parade Route and The National Mall
 Washington, District of Columbia
 January 20, 2017

Hargrove
 One Hargrove Drive, Lanham MD 20706 | 301.306.9000