



Reptiles and Amphibians

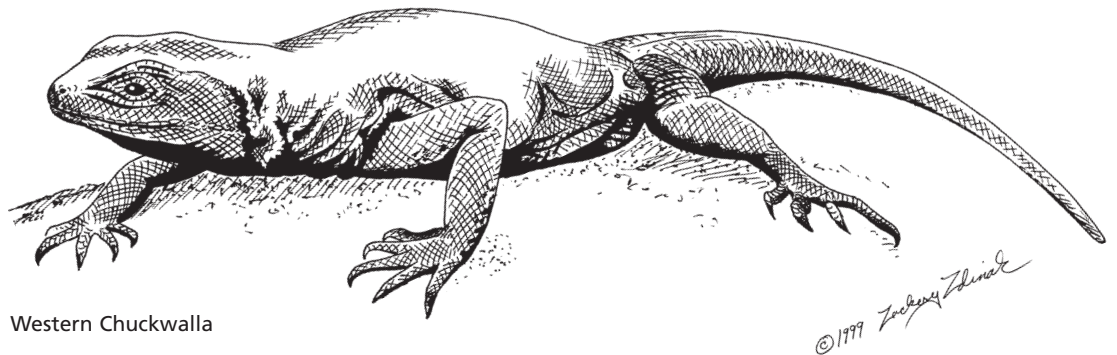


Terrestrial Gartersnake and Canyon Treefrog

Key to this guide

Measurements: Measurements are from snout to vent for amphibians and lizards (tail length not included).

† Threatened or endangered species.



Western Chuckwalla

©1999 Zachary Zbinden

Amphibians

■ **Tiger Salamander** - *Ambystoma tigrinum*: 3-6.5" large stocky salamander. Yellow to dark olive spots/blotches with irregular edges on dark ground color.

■ **Great Basin Spadefoot** - *Spea intermontanus*: 1.5-2.5" hourglass marking of gray or olive on back set off by ash-gray streaks. Pupils are vertical. Spade on hind foot wedge-shaped.

■ **Arizona Toad** - *Bufo microscaphus*: 2-3.25" green-gray, brown colored with light V-shaped stripe across head. Warts red to brown (also called Southwestern Toad).

■ **Red-spotted Toad** - *Bufo punctatus*: 1.5-3" small toad with flattened head and pointed snout; Light gray to reddish brown with red/orange warts.

■ **Woodhouse's Toad** - *Bufo woodhousii*: 1.25-5" gray, brown, or olive above with whitish dorsal stripe down middle of back; warts light. Unconfirmed native - Please report sightings; photos helpful.

■ **Canyon Treefrog** - *Hyla arenicolor*: 1.25-2.25"; brown, gray, or olive frog, normally without eye-stripe; very faint pattern of dark patches on back. Suction discs on toes.

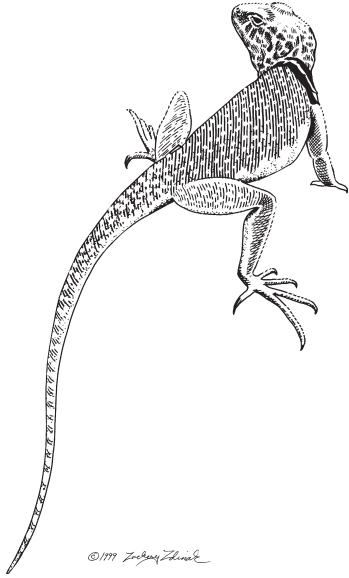
■ **Northern Leopard Frog** - *Rana pipiens*: 2-4.4"; greenish/brown frog with well defined rounded pale bordered, dark spots; white stripe on upper jaw.



Canyon Treefrog

©1999 Zachary Zbinden

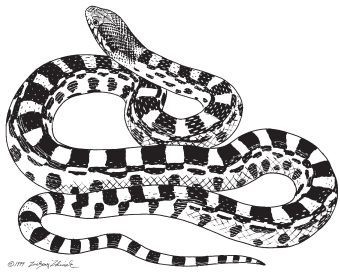
Lizards



Collared Lizard

- **Western Banded Gecko** - *Coleonyx variegatus*: 2-3"; fragile appearance, large eyes with vertical pupils, cream colored with dark crossbands.
- **Common Chuckwalla** - *Sauromalus ater*: 5.5-8"; large, flat, dark bodied. Loose folds of skin on neck and sides; may have dark or light cross bands on body; blunt tail with broad base.
- **Great Basin Collared Lizard** - *Crotaphytus bicinctores*: 3-4.25"; tail up to twice the length of the body; two black bands on shoulder and neck; overall color is olive-brown to green.
- **Long-nosed Leopard Lizard** - *Gambelia wislizenii*: 3.25-5.75"; gray-brown color with dusky brown spots; whitish lines across back and tail. Gravid (pregnant) females have bright orange spots.
- **Zebra-tailed Lizard** - *Callisaurus draconoides*: 2.5-4"; ear openings present. Underside of tail with black bars. Belly markings at midpoint of body.
- **Desert Spiny Lizard** - *Sceloporus magister*: 3.25-5.5"; stout, strong looking lizard; gray to brown mottled with yellow, green, brown, and metallic blue; black shoulder markings.
- **Plateau Lizard** - *Sceloporus tristichus*: 1.6-3.25"; Plain gray to brown with yellow to green blotches; may be some blue on throat. One of the most frequently seen lizards in Zion. (Note: taxonomy is unstable; sometimes listed as a subspecies of *Sceloporus elongatus*.)
- **Common Sagebrush Lizard** - *Sceloporus graciosus*: 1.8-2.6"; very similar to plateau lizard but slightly smaller and darker.
- **Side-blotched Lizard** - *Uta stansburiana*: 1.5-2.3"; overall gray to brown color with black "armpit." In spring, males with variable flecking on sides and back.
- **Ornate Tree Lizard** - *Urosaurus ornatus*: 1.5-2.25"; gray to brown overall with strip of enlarged scales down center of back.
- **Desert Horned Lizard** - *Phrynosoma platyrhinos*: 2.5-3.75"; similar to short-horned but has long head spines and is found at low elevations.
- **Greater Short-horned Lizard** - *Phrynosoma hernandesi*: 1.75-4.25"; broad, flat body; short tail; short horns or spine on back of head; irregular dark and light markings; high elevation.
- **Western Skink** - *Eumeces skiltonianus*: 2.1-3.75"; body long and rounded; shiny appearance; body cream to light brown with dark stripe down each side and lighter stripe down back; tail bright blue in young, fading with age.
- **Plateau Spotted Whiptail** - *Cnemidophorus innotatus*: 2.5-3.5"; slender body; tail about twice the length of the body; well defined dark and light stripes down back.
- **Western Whiptail** - *Cnemidophorus tigris*: 2.25-4.5"; very long and streamlined; generally gray to brown with mottled black or brown blotches on back and sides; adults with orange tent on lower back and base of tail; tail about twice the length of the body.
- **Gila Monster** - *Heloderma suspectum*: 9-14"; swollen, dorsal bead-like tail. Gaudy pattern of pink, black, orange, and yellow.

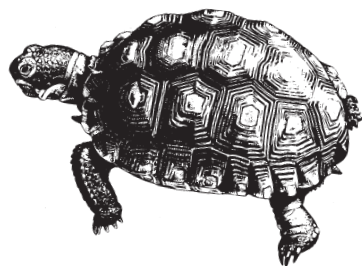
Snakes



Great Basin Gopher Snake

- **Ring-necked Snake** - *Diadophis punctatus*: 8-30"; olive above; yellow-orange below; no ring around neck.
- **Coachwhip** - *Masticophis flagellum*: 36-72"; slender; pinkish (may be tan/light brown) with faint crossbands down back, those on neck much darker.
- **Striped Whipsnake** - *Masticophis taeniatus*: 36-72"; slender; black to brown back with four narrow stripes running length of body.
- **Western Patch-nosed Snake** - *Salvadora hexalepis*: 20-46"; light tan/ground colored with wide brown-black stripe running length of each side.
- **Gophersnake** - *Pituophis catenifer*: 36-72"; yellow-gray to red-brown; dark brown-black blotches down back; dark line from eye to eye.
- **Common Kingsnake** - *Lampropeltis getula*: 30-60"; black and white bands circle entire length of snake.
- **Sonoran Mountain Kingsnake** - *Lampropeltis pyromelana*: 18-41"; black, cream, and coral-pink bands down length of body; thin band of black-cream-black separates each pink band.
- **Terrestrial Gartersnake** - *Thamnophis elegans*: 18-30"; gray-green overall with light yellow lines along top and each side.
- **Groundsnake** - *Sonora semiannulata*: 8-18"; red and black bands on back fade into yellow sides.
- **Smith's Black-headed Snake** - *Tantilla hobartsmithi*: 5.5-15"; plain brown or beige above with dark brown or black head. Unconfirmed resident; report sightings, photos helpful.
- **Western Lyresnake** - *Trimorphodon biscutatus*: 18-47.75"; gray with brown blotches edged in black on upperparts; lyre-shaped pattern on top of head.
- **Nightsnake** - *Hypsiglena torquata*: 12-26"; gray to tan with brown spots on back and dark blotch on each side of neck.
- **Western Rattlesnake** - *Crotalus oreganus*: 15-65"; generally gray to brown with dark hexagonal patches down back; wide, flat head and rattle on tail.

Tortoise



Desert Tortoise

- † **Desert Tortoise** - *Gopherus agassizii*: 8-15"; high domed shell with prominent growth lines on shields; elephant-like limbs.