

Grand Canyon Backcountry Information Center



2017 Backcountry and River Use Statistics

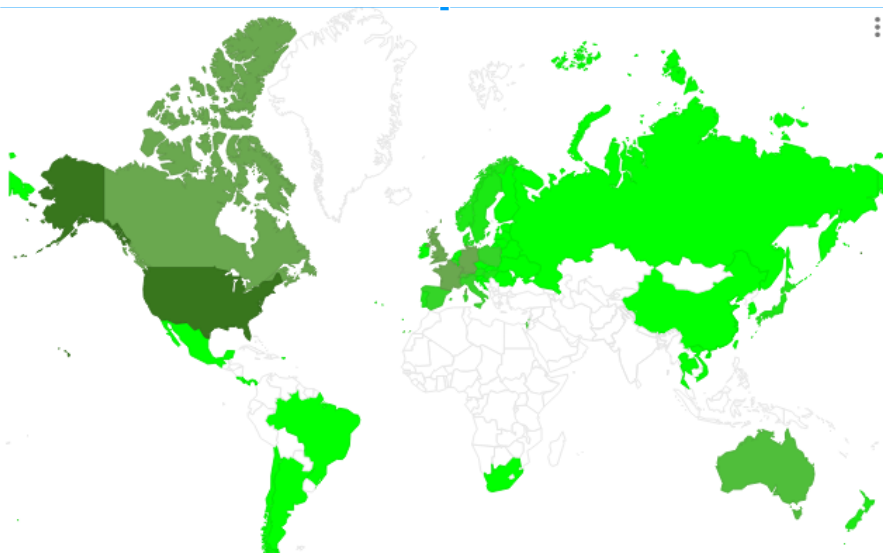
-by Steve Sullivan

Contents

Backcountry Use (use by Overnight Backpacking Groups)	Page
- Where Permittees are from (Country, State, and Heat Map)	3 to 5
- Success Rates for Permit Applicants	6
- Month Use Comparison Graphs for 2000 to 2017	7 to 12
- Commercial Use	13 to 15
- Packrafting / River Assisted Backcountry Travel	16 to 19
- Use Area Details for 2017	20 to 22
River Use (use by participants on Recreational River Trips)	Page
- 2017 Use	23 to 27
- Commercial Use Comparisons for 2007 to 2017	28 to 30
- Noncommercial Use Comparisons for 2006 to 2017	31 to 34
Noncommercial River Weighted Lottery	Page
- Where Applicants are from (Country, State, and Heat Map)	35 to 37
- Applicant Ages	38
- How Many Applicants Ended up on Noncommercial Trips	39
- Cancellations and Overbookings	40 to 43
Old River Waitlist	44 to 45

Backcountry Permittees in 2017

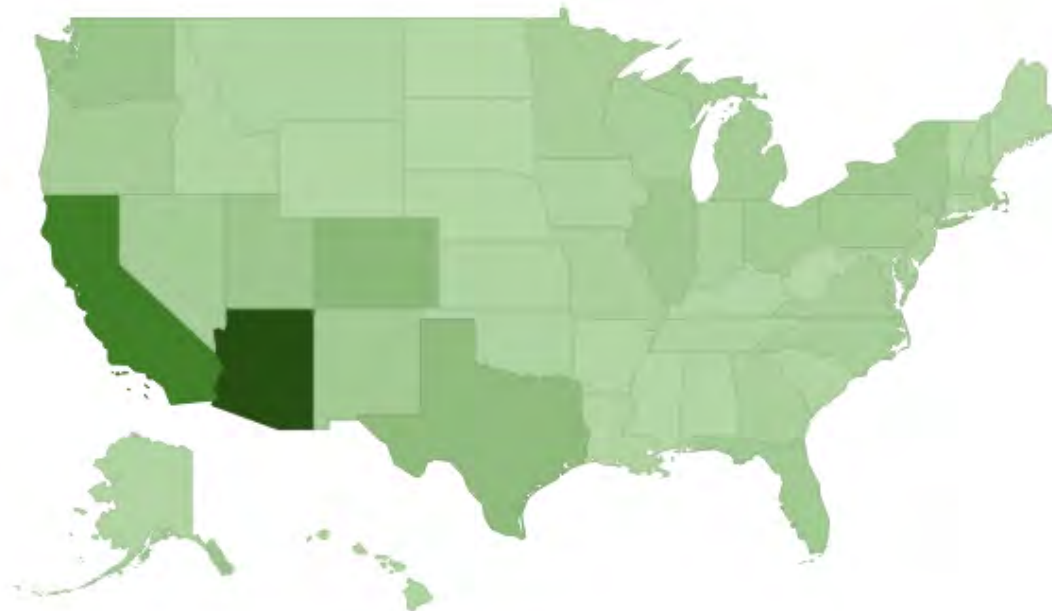
Country	Permits	People
USA	12247	38338
CANADA	511	1305
GERMANY	282	664
FRANCE	147	351
UNITED KINGDOM	102	265
AUSTRALIA	71	147
NETHERLANDS	58	141
SWITZERLAND	56	124
CZECH REPUBLIC	42	108
ISRAEL	41	96
ITALY	34	75
POLAND	32	83
SPAIN	32	59
BELGIUM	30	73
DENMARK	19	55
NEW ZEALAND	19	54
AUSTRIA	17	36
SWEDEN	15	32
JAPAN	13	21
HUNGARY	8	23
NORWAY	6	22
PORTUGAL	6	9
CHINA	5	24
FINLAND	5	15
MEXICO	4	20
SOUTH AFRICA	4	10
SOUTH KOREA	4	9



Country	Permits	People
RUSSIA	4	7
IRELAND	3	9
ARGENTINA	3	6
BRAZIL	3	5
SLOVAKIA	3	5
PUERTO RICO	3	4
CROATIA	2	8
BELARUS	2	5
LUXEMBOURG	2	4
LITHUANIA	2	3
LATVIA	2	2
UKRAINE	1	11
FRENCH GUYANA	1	6
CAYMAN ISLANDS	1	4
TAIWAN	1	3
CHILE	1	2
COLUMBIA	1	2
COSTA RICA	1	2
CZECH REPUBLIC	1	2
ESTONIA	1	2
GERMANY	1	2
KOREA	1	2
NETHERLANDS	1	2
PANAMA	1	2
SLOVAK REPUBLIC	1	2
SLOVENIA	1	2
F. POLYNESIA	1	1
ROMANIA	1	1
THAILAND	1	1
VIETNAM	1	1

USA Backcountry Permittees in 2017

State	Permits	People
AZ	3644	13017
CA	1658	5287
CO	611	1737
TX	536	1667
WA	362	1035
UT	330	1094
IL	302	886
NY	292	720
NM	259	862
FL	241	628
PA	231	622
NV	226	728
OH	226	619
OR	223	549
MI	221	603
MA	192	518
VA	182	509
MN	181	539
WI	175	514
NC	172	452
MO	146	448
GA	143	409
IN	141	426
NJ	138	395
MD	136	416
IA	98	316



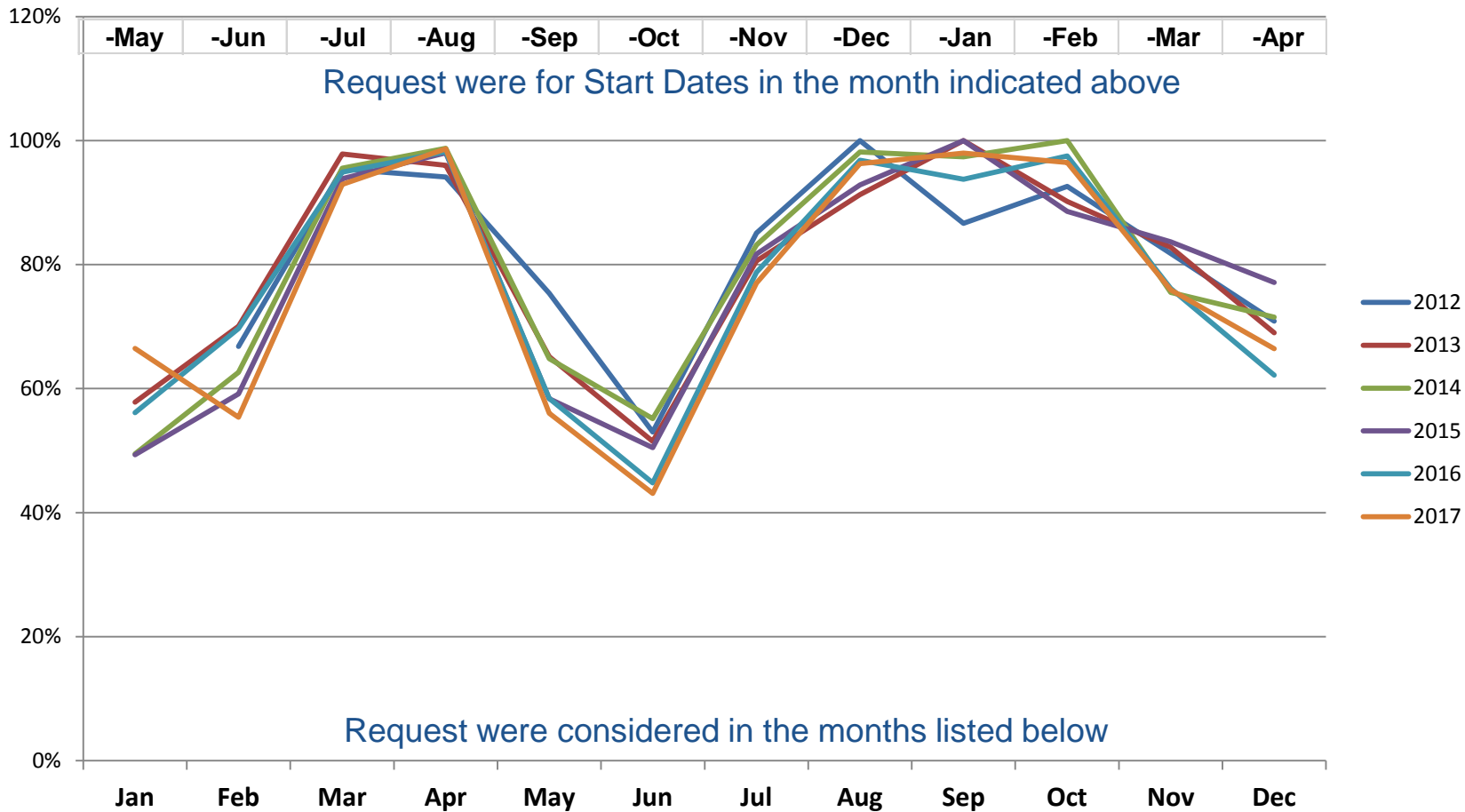
State	Permits	People
OK	95	286
TN	94	284
MT	82	209
KS	81	252
ID	80	265
NH	61	168
AK	59	130
CT	56	147
DC	54	135
KY	53	157
LA	50	137
SC	49	134
AL	48	145
NE	46	130
WY	42	116
AR	39	123
VT	34	96
ME	33	60
HI	27	66
MS	19	53
SD	18	59
DE	17	48
WV	14	47
RI	14	39
ND	12	44
VI	2	7
GU	1	2
AP	1	3

Backcountry Permittees by Origin

(based on 2017 Backcountry Permits)

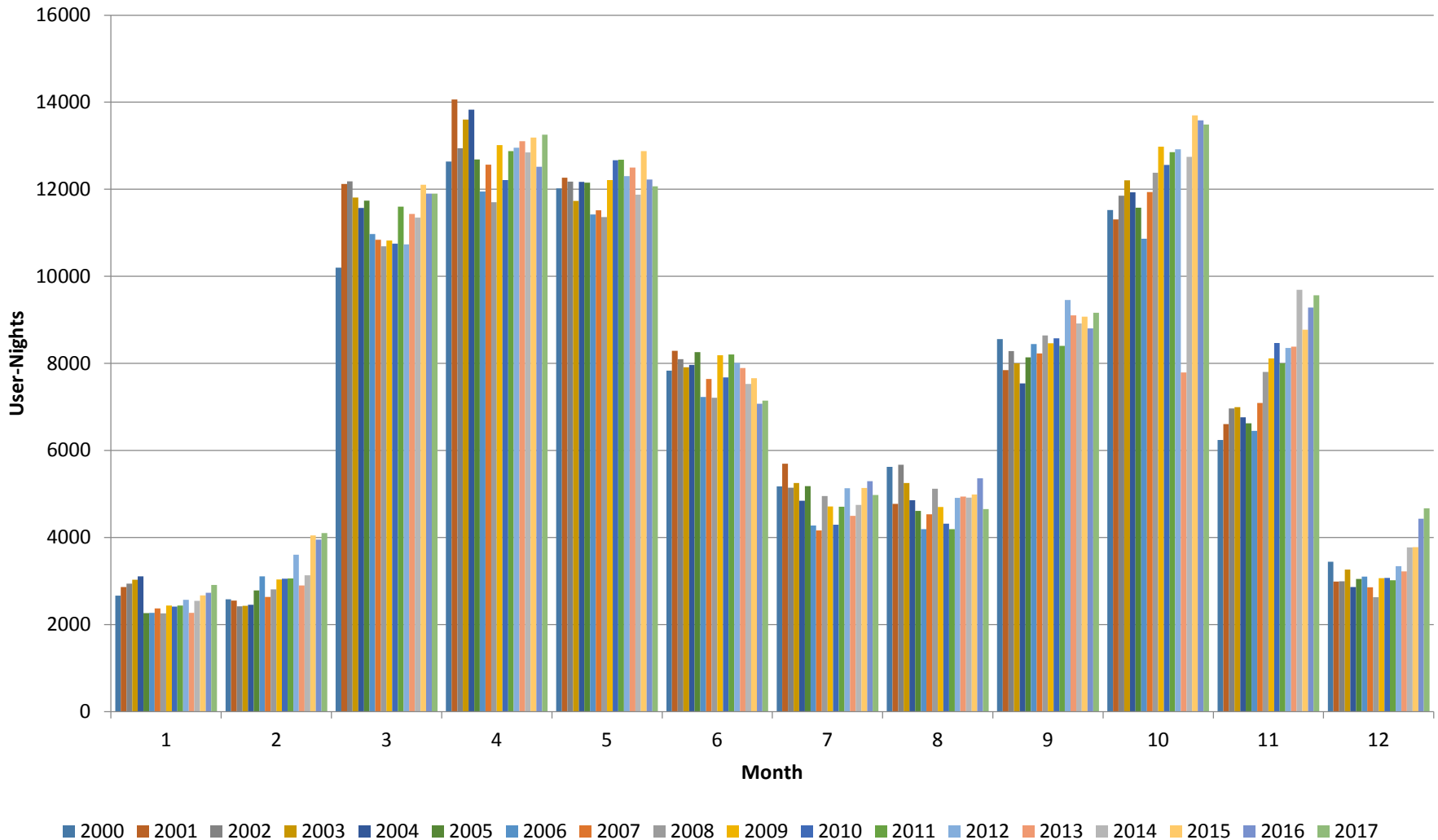


Success Rates for Backcountry Requests Submitted On Earliest Allowed Date

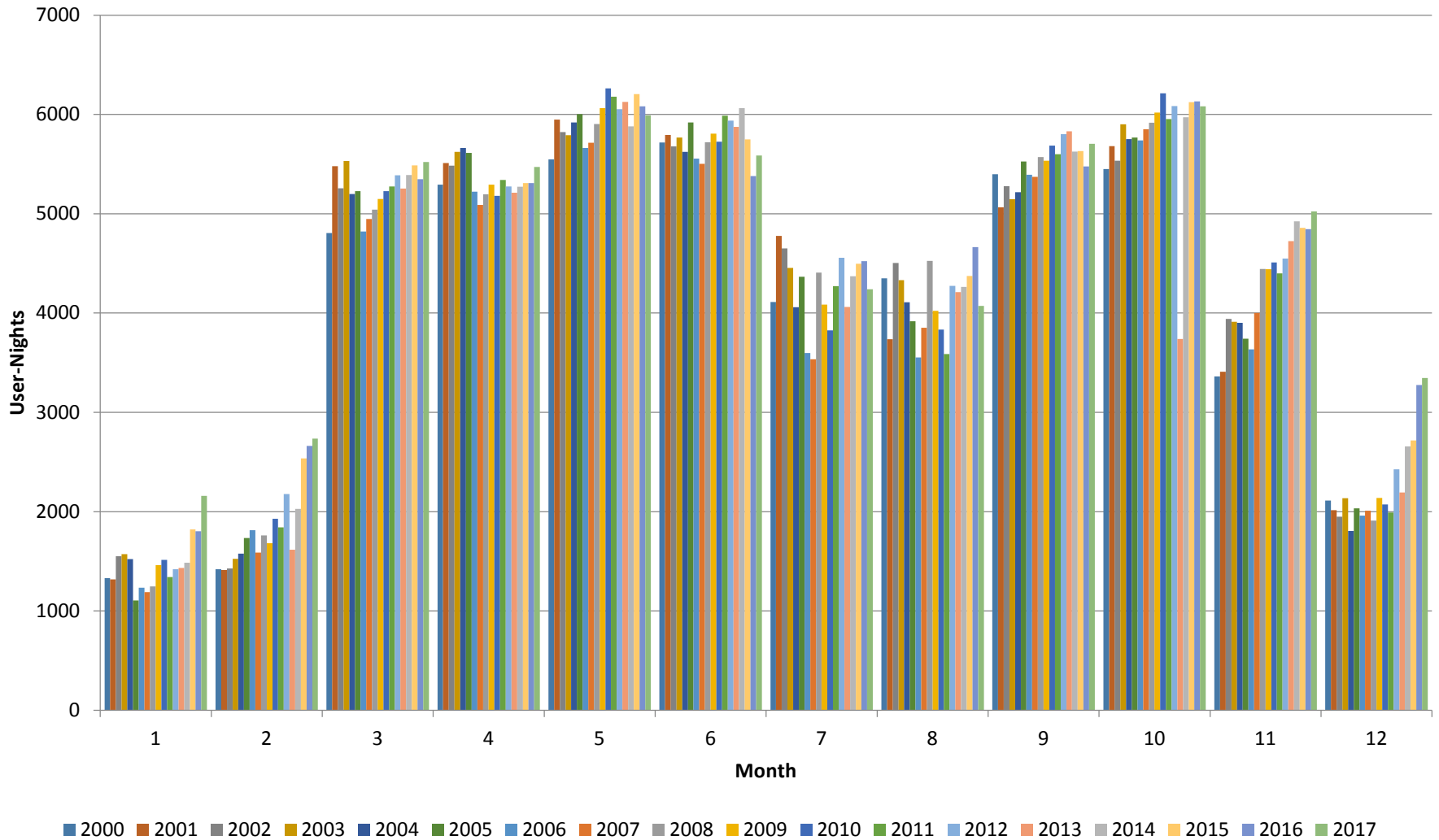


Backcountry Use Trends, 2000-2017

Corridor + Non-Corridor

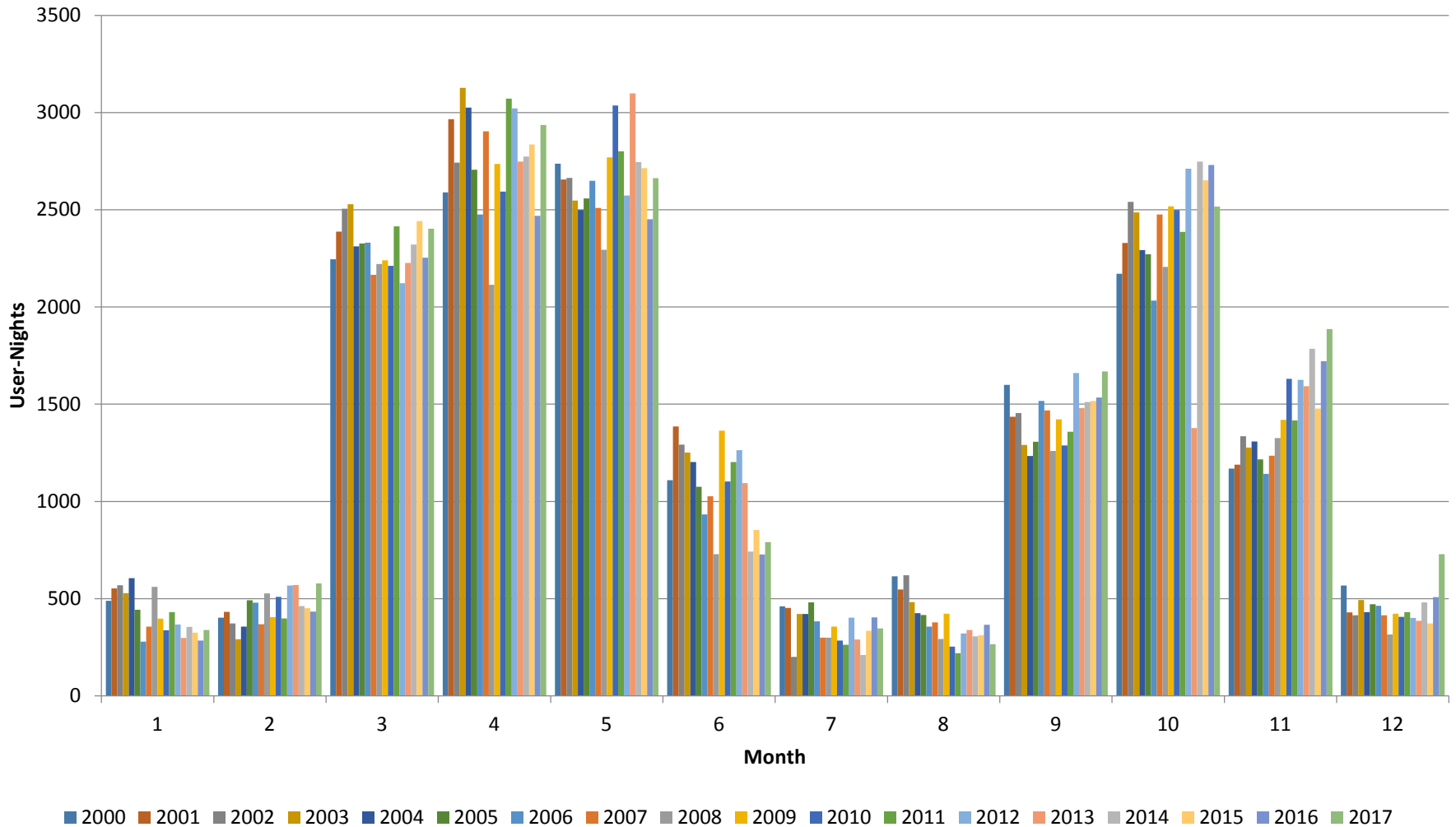


Backcountry Use Trends, 2000-2017 Corridor



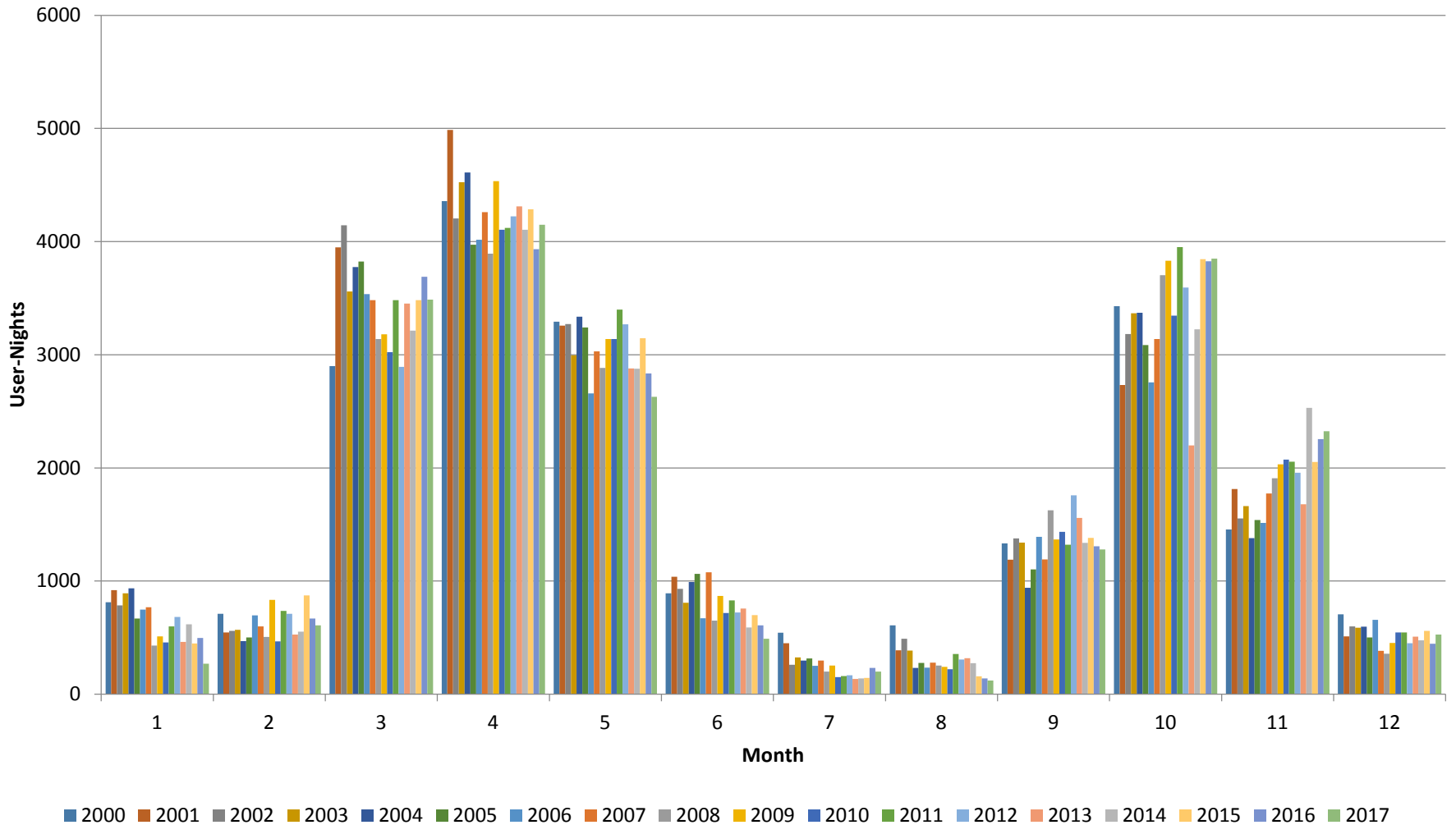
Backcountry Use Trends, 2000-2017

Threshold Use Areas



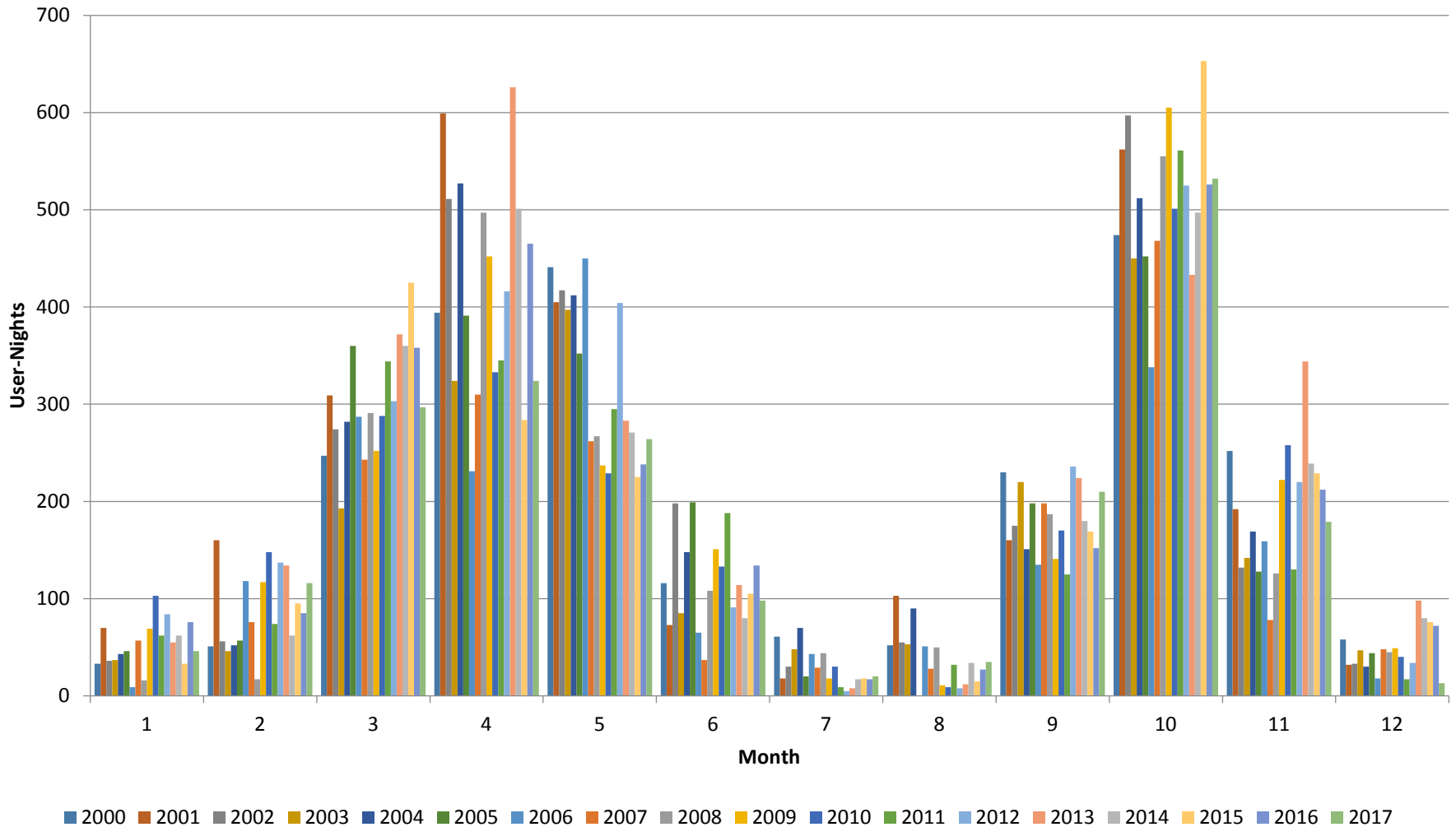
Backcountry Use Trends, 2000-2017

Primitive Use Areas

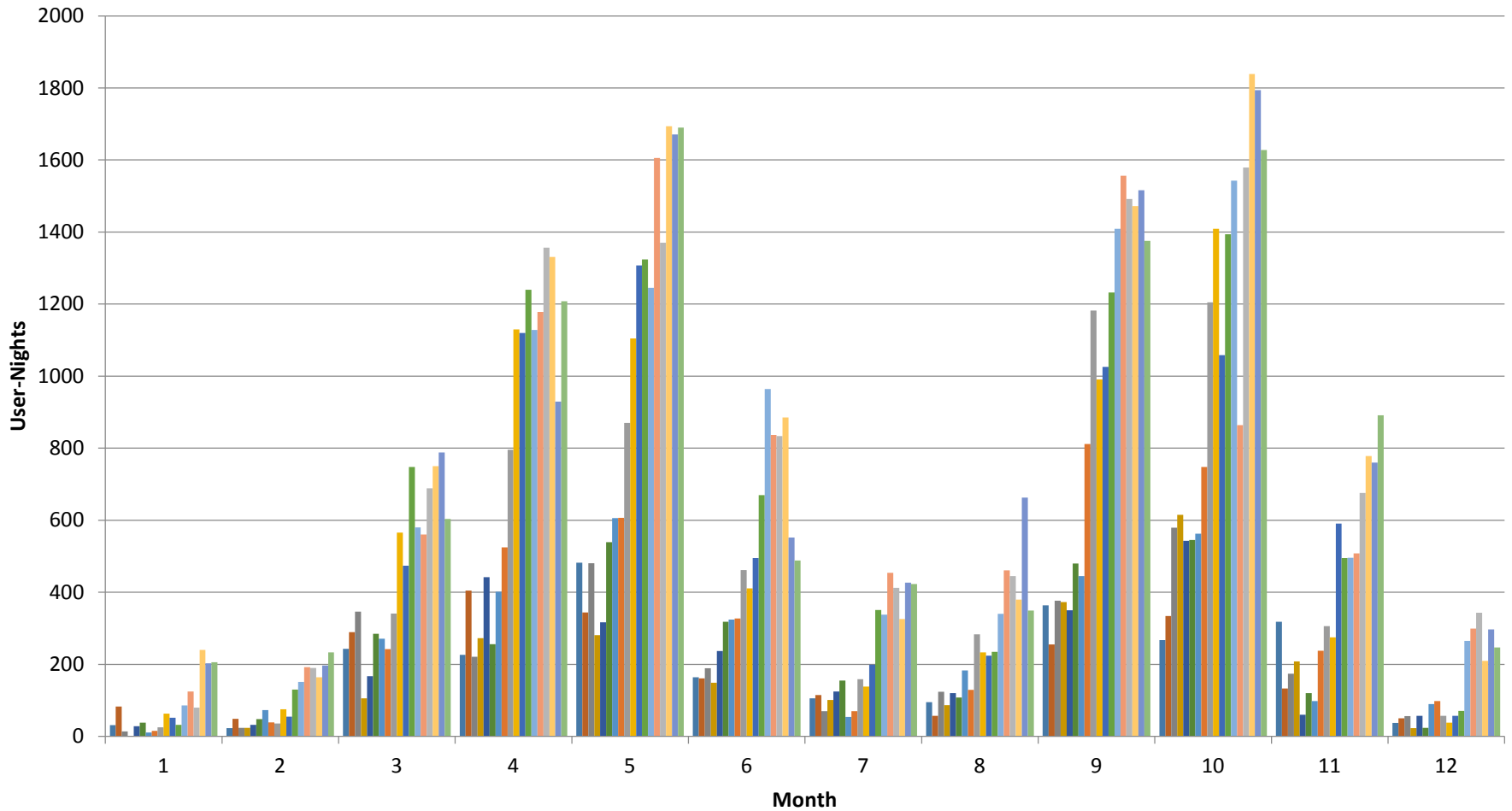


Backcountry Use Trends, 2000-2017

Wild Use Areas

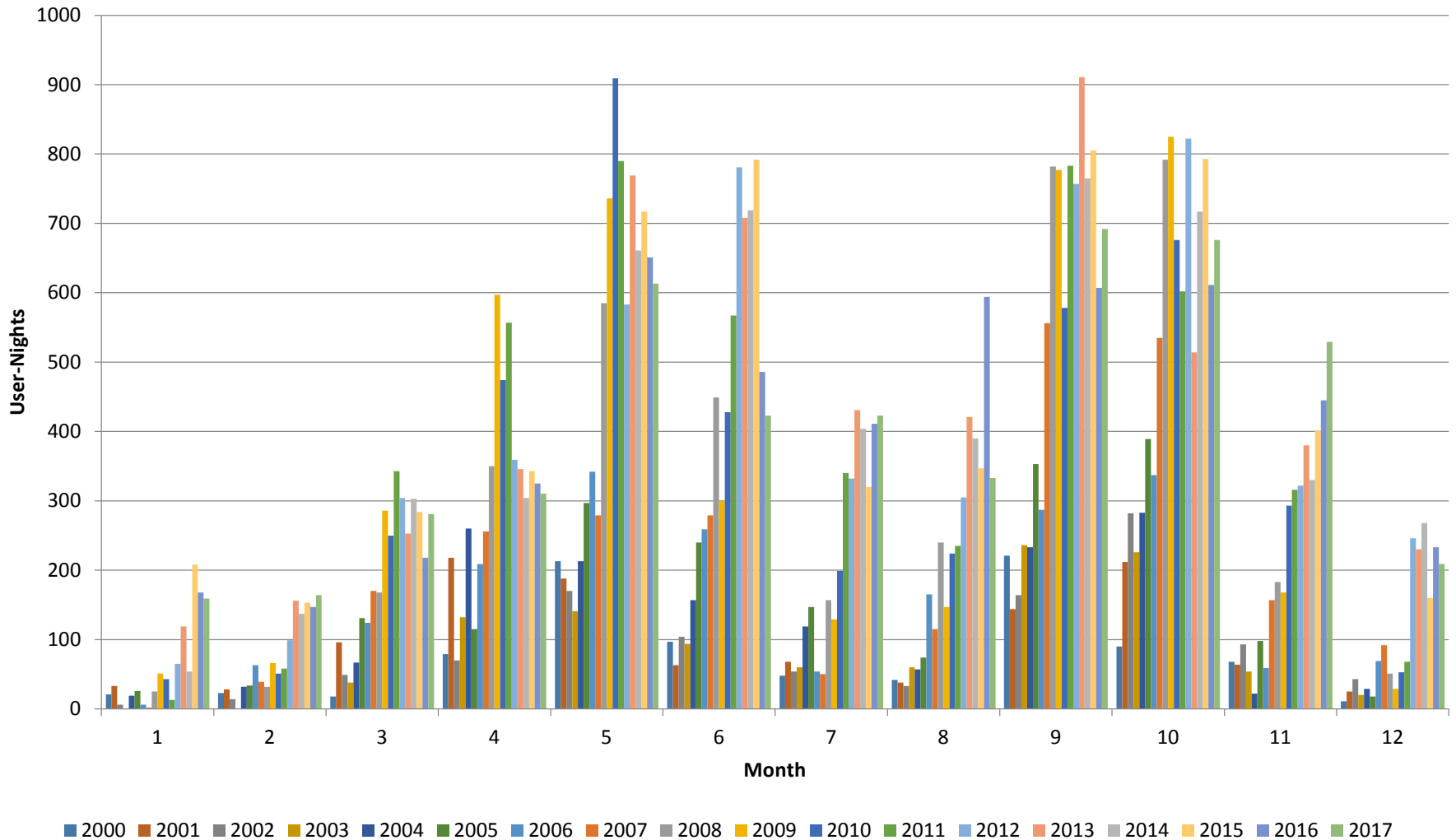


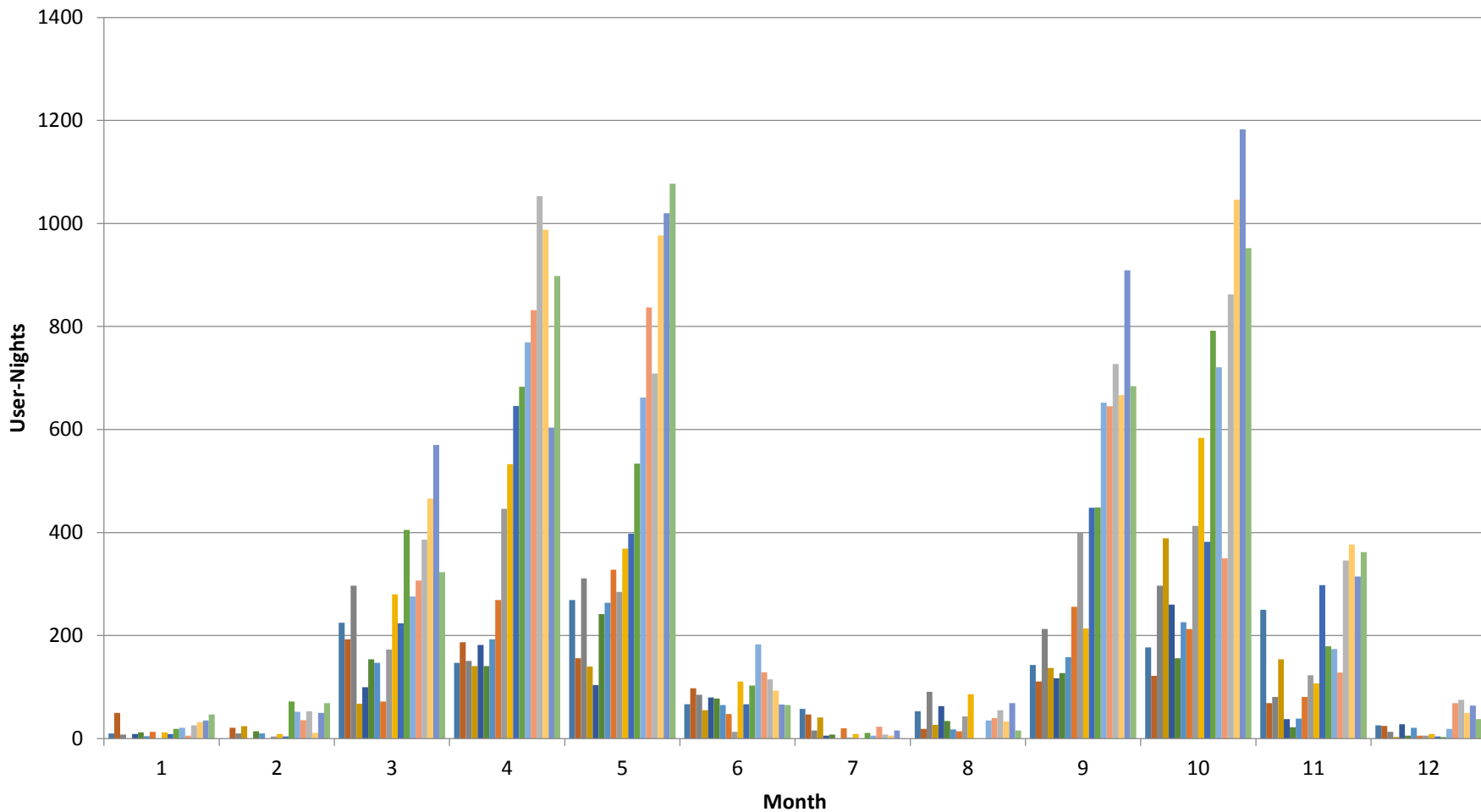
Backcountry Commercial Use, 2000-2017



■ 2000 ■ 2001 ■ 2002 ■ 2003 ■ 2004 ■ 2005 ■ 2006 ■ 2007 ■ 2008 ■ 2009 ■ 2010 ■ 2011 ■ 2012 ■ 2013 ■ 2014 ■ 2015 ■ 2016 ■ 2017

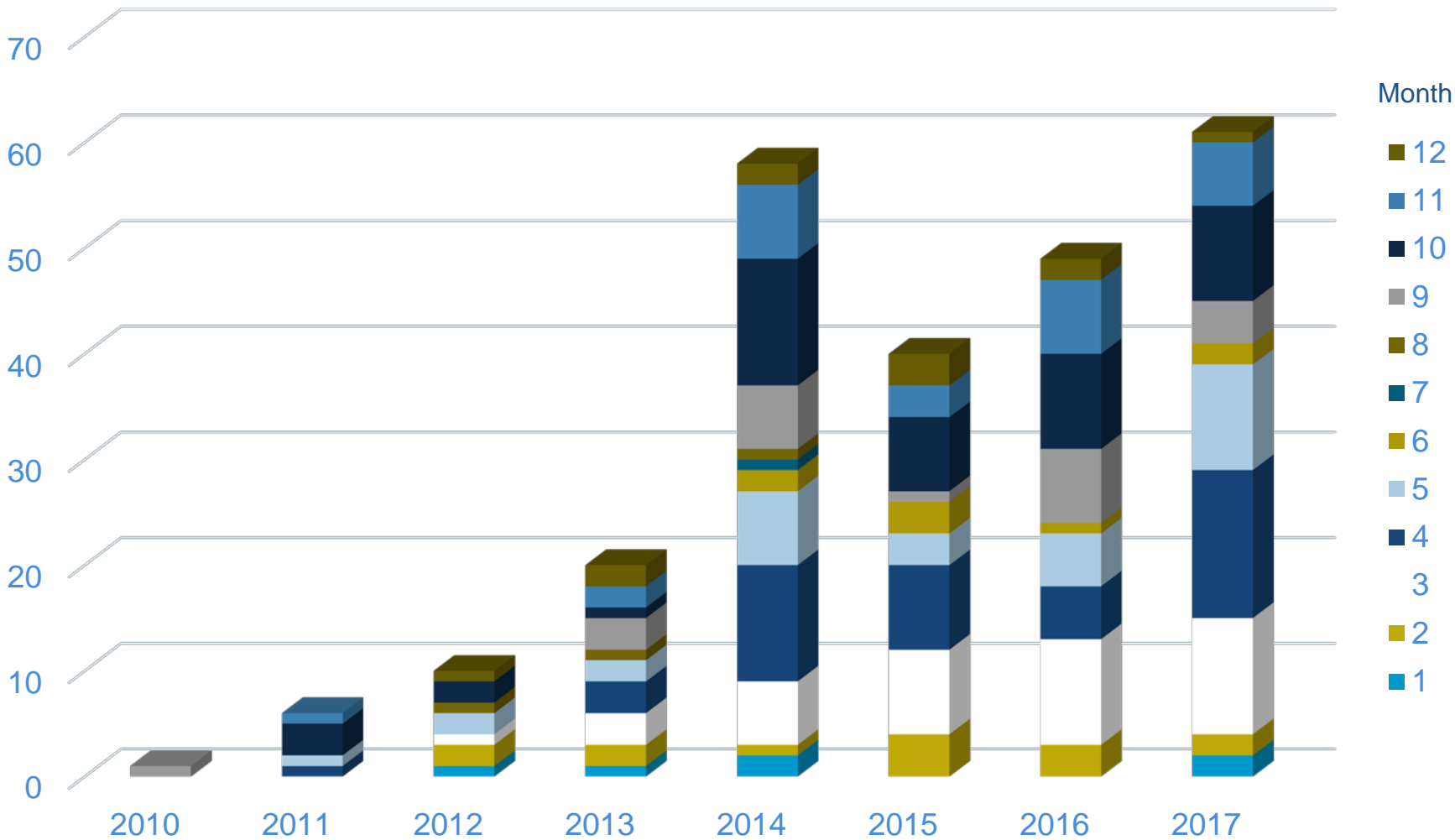
Backcountry Commercial Use in Corridor, 2000-2017



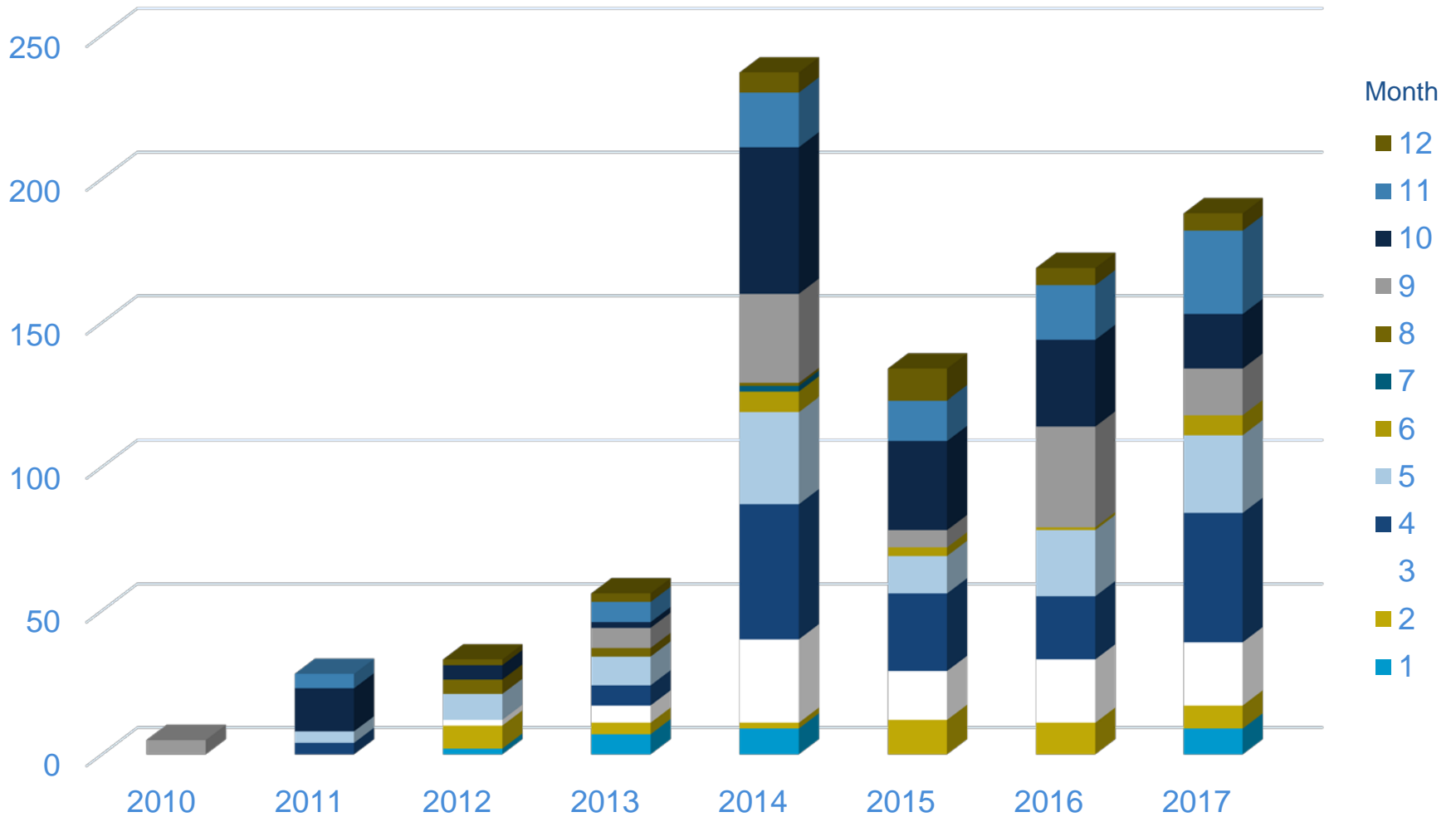


■ 2000 ■ 2001 ■ 2002 ■ 2003 ■ 2004 ■ 2005 ■ 2006 ■ 2007 ■ 2008 ■ 2009 ■ 2010 ■ 2011 ■ 2012 ■ 2013 ■ 2014 ■ 2015 ■ 2016 ■ 2017

Backcountry Permits with Packrafts: Permits



Backcountry Permits with Packrafts: People



Backcountry Use Area Details for 2017

use_area	user_nights	group_nights	people	permits	first_nights	last_nights	stock	stock_nights
AA9	15	7	13	6	6	3	0	0
AB0	94	17	63	12	10	10	0	0
AB9	98	23	55	14	9	9	0	0
AC9	267	77	139	41	33	37	0	0
AD9	26	16	15	8	5	2	0	0
AE9	909	288	295	110	98	82	0	0
AF9	253	98	134	54	13	6	0	0
AG9	109	47	56	25	9	10	0	0
AH9	68	33	41	21	7	7	0	0
AJ9	82	36	46	21	4	8	0	0
AK9	1471	543	791	313	140	132	0	0
AM9	447	127	365	101	48	41	0	0
AN9	23	8	23	8	5	3	0	0
AP9	315	110	144	54	42	33	0	0
AQ9	71	43	25	15	4	7	0	0
AR9	313	63	77	20	6	8	0	0
AS9	472	140	154	51	24	34	0	0
AT9	76	30	42	17	7	11	0	0
AU9	90	54	45	25	5	3	0	0
AV9	105	33	62	20	4	0	0	0
AW7	933	257	736	206	93	42	0	0
AW8	546	140	443	110	9	5	0	0
AX7	987	245	783	199	33	48	0	0
AY9	1091	273	776	194	103	164	0	0
AZ9	120	50	87	37	7	11	0	0
BA9	959	359	532	206	75	35	0	0
BB9	1804	627	1314	462	373	215	0	0
BC9	1168	404	941	325	50	37	0	0
BD9	1543	465	1259	393	132	144	0	0
BE9	1447	444	1269	389	112	160	0	0
BF5	2111	608	1673	495	292	413	0	0
BG9	1581	499	1295	421	228	174	0	0

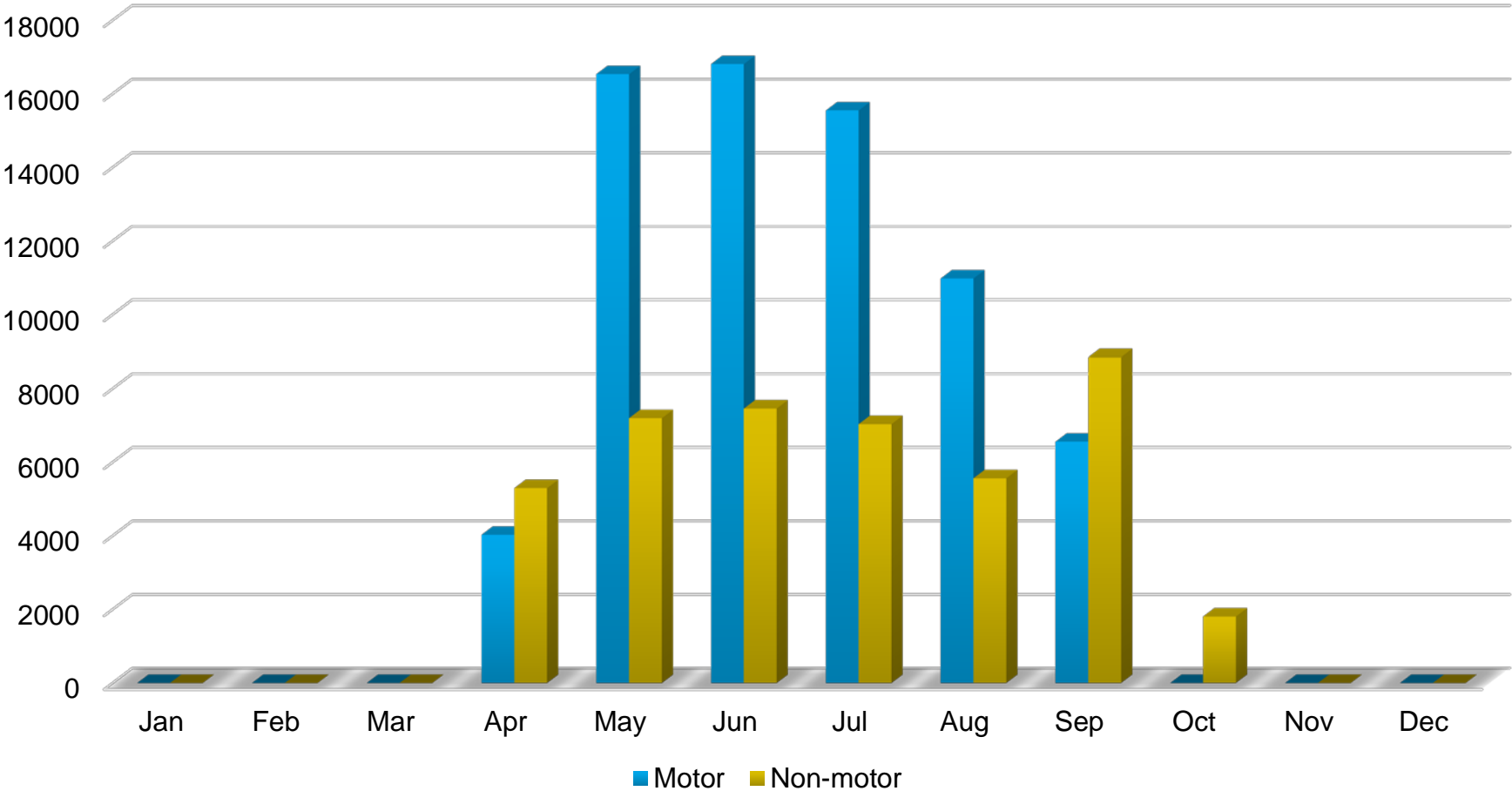
use_area	user_nights	group_nights	people	permits	first_nights	last_nights	stock	stock_nights
BH9	876	297	743	259	48	23	0	0
BJ9	1260	426	1029	359	131	186	0	0
BL4	788	222	774	217	83	94	0	0
BL5	356	143	355	142	21	35	0	0
BL6	173	79	162	74	31	23	0	0
BL7	2728	702	2102	566	244	204	0	0
BL8	1240	354	1104	321	93	66	0	0
BM7	3099	830	2496	673	437	393	0	0
BM8	1018	297	888	265	125	93	0	0
BN9	1302	463	830	313	175	170	0	0
BO9	301	126	185	74	3	3	0	0
BP9	232	99	146	60	11	5	0	0
BQ9	680	211	469	147	63	97	0	0
BR9	1030	312	323	100	47	38	0	0
BS9	4	3	3	2	1	1	0	0
BT9	55	15	24	8	2	2	0	0
BU9	18	4	9	2	1	0	0	0
CBG	31049	9651	23382	7439	5969	4536	26	43
CCG	8989	2827	7188	2217	1428	828	8	14
CIG	15548	4629	13732	4093	1395	3703	0	0
LA9	750	202	242	73	29	47	0	0
LB9	399	125	154	44	25	28	0	0
LC9	269	66	128	30	12	18	0	0
LE9	24	5	9	2	1	1	0	0
LF9	10	4	5	2	1	0	0	0
LG9	10	4	5	2	0	0	0	0
LH9	12	5	5	2	0	1	0	0
LI9	6	1	6	1	0	1	0	0
LJ9	19	7	5	2	1	1	0	0
LK9	57	14	22	6	5	5	0	0
LL9	38	10	10	3	1	3	0	0
NA0	88	45	43	24	19	19	0	0

use_area	user_nights	group_nights	people	permits	first_nights	last_nights	stock	stock_unights
NA1	221	99	202	92	80	78	0	0
NB9	19	9	17	8	5	7	0	0
NC9	54	18	46	15	10	8	0	0
NCG	153	78	149	76	27	27	0	0
ND9	46	23	39	19	5	6	0	0
NF9	251	104	236	98	84	81	0	0
NG9	21	11	15	8	5	3	0	0
NH1	599	208	449	167	146	149	0	0
NJ0	89	28	40	16	6	6	0	0
NJ1	139	60	104	47	40	41	0	0
NJ2	190	66	137	50	37	28	0	0
NK9	133	52	91	33	23	19	0	0
NL9	119	48	74	25	20	10	0	0
NN9	21	7	20	6	2	5	0	0
NRH	191	44	56	13	12	13	40	119
NRR	2	2	2	2	0	1	0	0
SA9	82	40	50	24	24	24	0	0
SB9	6	3	6	3	3	2	0	0
SC9	10	6	10	6	5	3	0	0
SE0	31	7	24	5	4	2	0	0
SE1	111	31	72	21	19	16	0	0
SE2	174	57	116	38	34	27	0	0
SE3	242	80	196	70	65	23	0	0
SF9	62	19	38	10	8	9	0	0
SG9	50	13	23	6	5	3	0	0
SH9	12	5	10	4	4	4	0	0
SI9	70	12	41	8	8	7	0	0
TCG	2593	969	1596	607	592	584	0	0
YUR	170	64	127	50	8	9	0	0

Calendar Year 2017 River

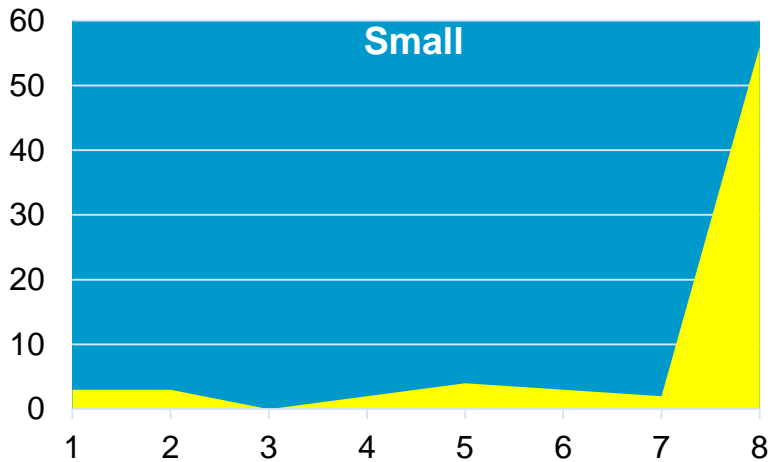
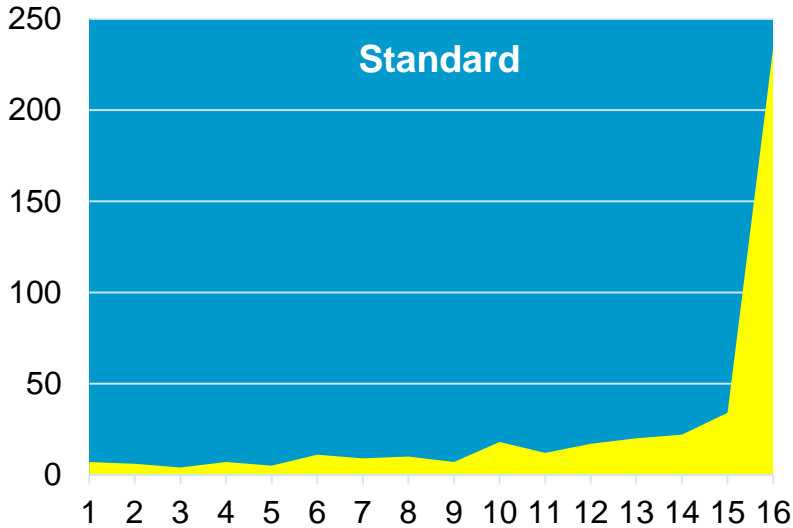
Calendar Year 2017			Commercial			Noncommercial		
			Motor	Nonmotor	Total	Standard	Small	Total
User Days	Total	Summer	59,885	27,263	87,148	27,625	6,499	34,124
		Shoulder	10,585	15,947	26,532	48,602	1,614	50,216
		Winter	0	0	0	25,402	0	25,402
		Full Year	70,470	43,210	113,680	101,629	8,113	109,742
Trips Launching	Total	Summer	365	123	488	118	59	177
		Shoulder	60	80	140	189	14	203
		Winter	0	0	0	116	0	116
		Full Year	425	203	628	423	73	496
Recreational Passengers	Total	Summer	11,957	3,299	15,256	1,879	444	2,323
		Shoulder	1,865	1,426	3,291	2,898	113	3,011
		Winter	0	0	0	1,273	0	1,273
		Full Year	13,822	4,725	18,547	6,050	557	6,607

Commercial River User-Days by Month 2017



Noncommercial River Trip Sizes in 2017

Participants	Standard Trips	Small Trips
1	7	3
2	6	3
3	4	0
4	7	2
5	5	4
6	11	3
7	9	2
8	10	56
9	7	0
10	18	0
11	12	0
12	17	0
13	20	0
14	22	0
15	34	0
16	234	0



Noncommercial River Trip Sizes by Month in 2017

	1	2	3	4	5	6	7	8	9	10	11	12	13	14	15	16	
January	5	1	1	0	2	5	4	1	1	3	0	1	0	2	0	4	30
February	0	1	0	1	1	1	1	1	2	0	2	2	2	2	2	11	29
March	0	1	0	0	0	3	1	1	1	2	2	3	4	2	5	38	63
April	2	1	0	1	0	0	0	13	0	1	2	1	3	1	4	17	46
May	1	0	0	1	1	2	1	9	1	0	2	1	1	2	3	18	43
June	0	1	0	0	2	1	1	11	0	0	0	1	0	3	3	22	45
July	0	1	0	1	0	0	0	16	0	0	0	0	0	0	1	27	46
August	1	1	0	0	2	0	1	10	0	3	0	1	2	3	3	16	43
September	0	0	0	0	0	1	0	0	1	2	1	1	4	1	5	30	46
October	0	0	0	1	0	1	0	0	0	1	1	4	3	1	6	30	48
November	0	0	0	1	0	0	1	2	1	3	2	1	0	3	2	12	28
December	1	2	3	3	1	0	1	2	0	3	0	1	1	2	0	9	29
	10	9	4	9	9	14	11	66	7	18	12	17	20	22	34	234	496

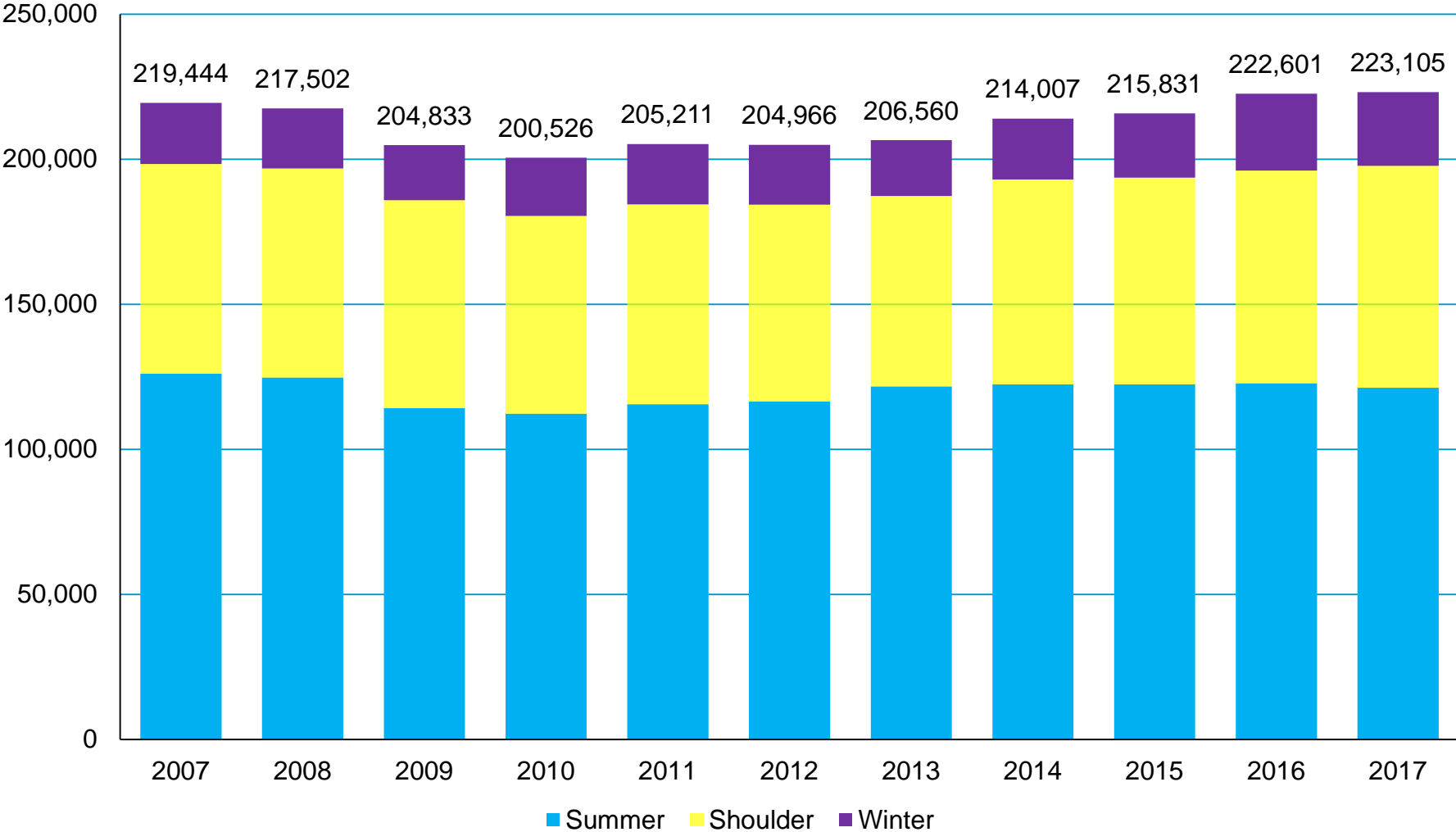
Types of Noncommercial River Watercraft in 2017

	Oar	Hard Shell Kayak	Catacraft	Inflatable Kayak	Packraft	Paddleboard	Dory	Motor	Paddleboat	Other	Canoe
January	81	82	9	3	13	2	1	0	0	0	0
February	113	36	9	6	0	2	3	0	0	0	2
March	316	83	25	14	4	2	1	0	5	4	0
April	201	14	9	12	2	5	4	1	0	0	0
May	131	36	12	14	1	3	1	4	1	2	1
June	32	7	1	10	0	3	0	1	0	0	0
July	27	13	0	2	0	0	0	0	0	0	0
August	8	2	4	1	0	0	0	1	0	0	0
September	5	0	1	0	0	0	0	0	0	0	0
October	6	0	0	0	0	0	1	0	0	0	0
November	6	0	0	0	0	0	0	0	0	0	0
December	1	0	0	0	0	0	0	0	0	0	0
TOTAL	927	273	70	62	20	17	11	7	6	6	3

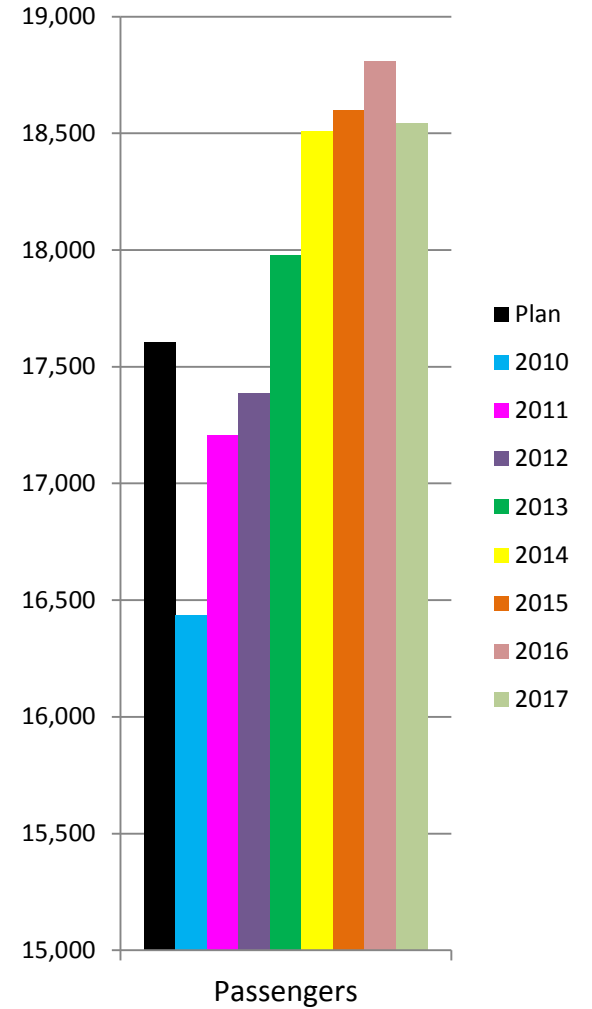
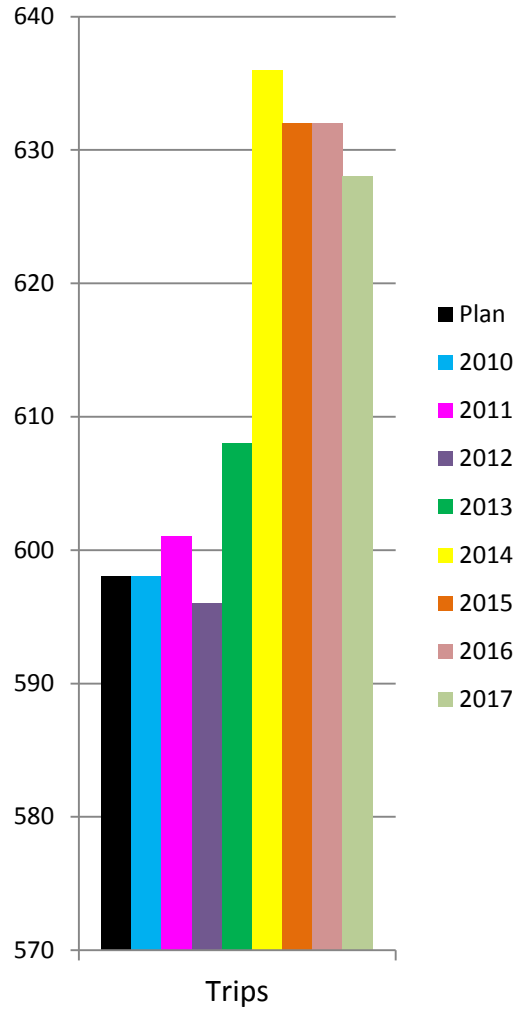
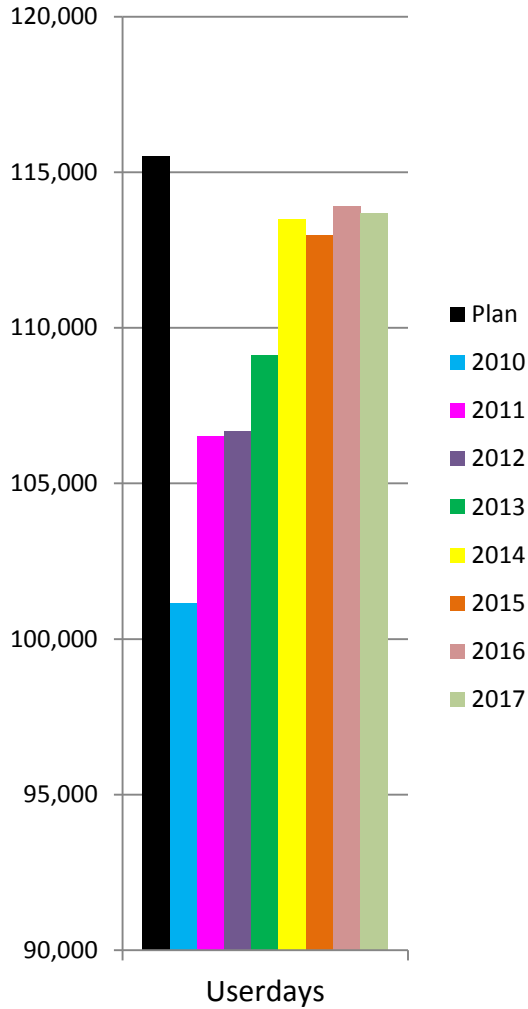
Commercial River Use by Season

Commercial		2007	2008	2009	2010	2011	2012	2013	2014	2015	2016	2017
User-Days	Summer	91,553	90,908	81,347	79,071	82,931	84,386	87,335	89,961	88,514	87,682	87,148
	Shoulder	22,453	23,102	21,501	22,066	23,577	22,273	21,774	23,541	24,459	26,227	26,532
	Winter	0	0	0	0	0	0	0	0	0	0	0
	Full Year	114,006	114,010	102,848	101,137	106,508	106,659	109,109	113,502	112,973	113,909	113,680
Trips	Summer	482	486	468	470	470	470	474	495	492	490	488
	Shoulder	124	124	124	128	131	126	134	141	140	142	140
	Winter	0	0	0	0	0	0	0	0	0	0	0
	Full Year	606	610	592	598	601	596	608	636	632	632	628
Passengers	Summer	15,761	15,644	13,866	13,801	14,299	14,608	15,266	15,662	15,501	15,625	15,256
	Shoulder	2,656	2,722	2,580	2,633	2,909	2,776	2,712	2,845	3,098	3,184	3,291
	Winter	0	0	0	0	0	0	0	0	0	0	0
	Full Year	18,417	18,366	16,446	16,434	17,208	17,384	17,978	18,507	18,599	18,809	18,547

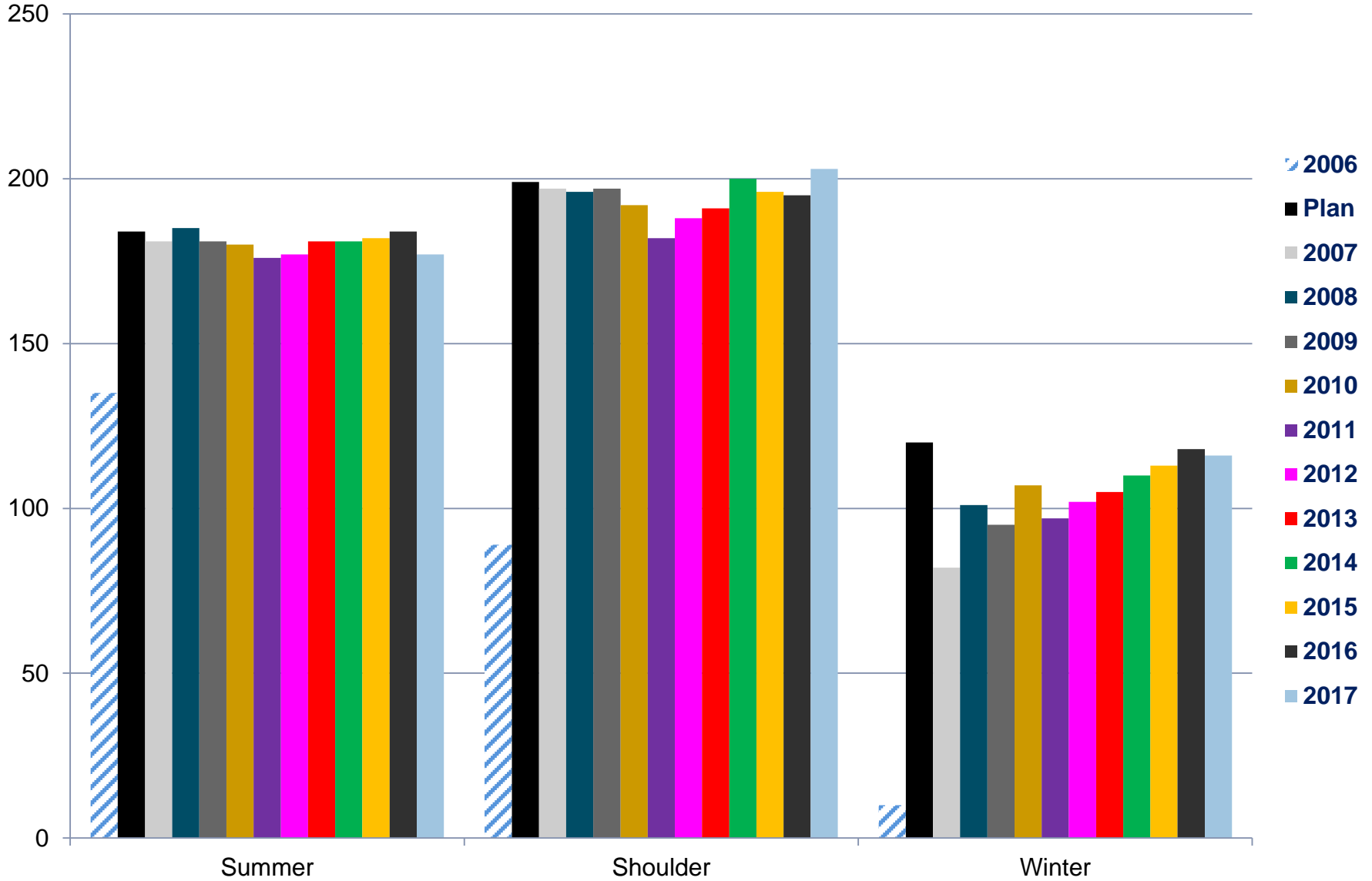
Total User-Days Commercial + Noncommercial River Trips



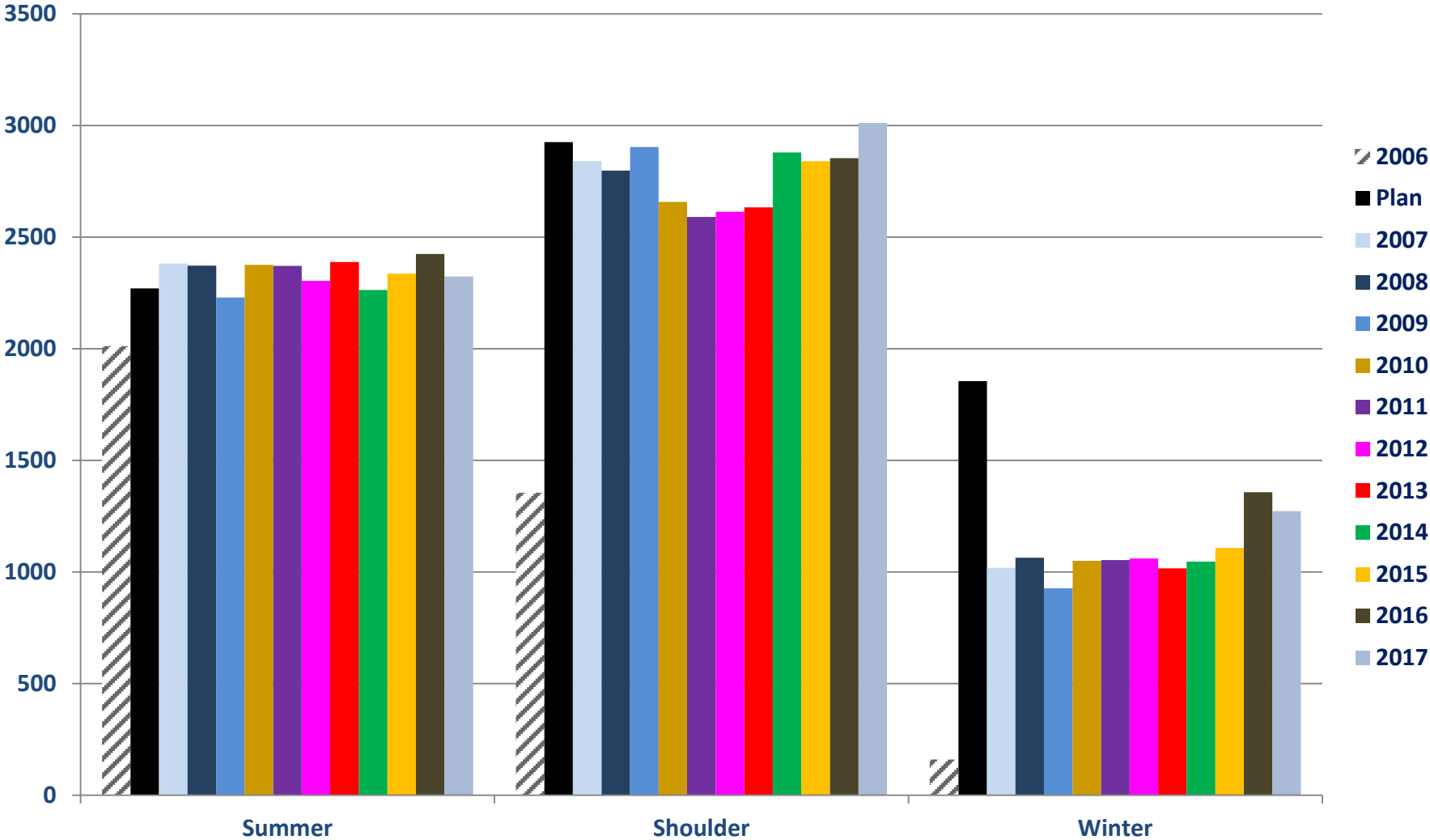
Commercial River Use 2010-2017



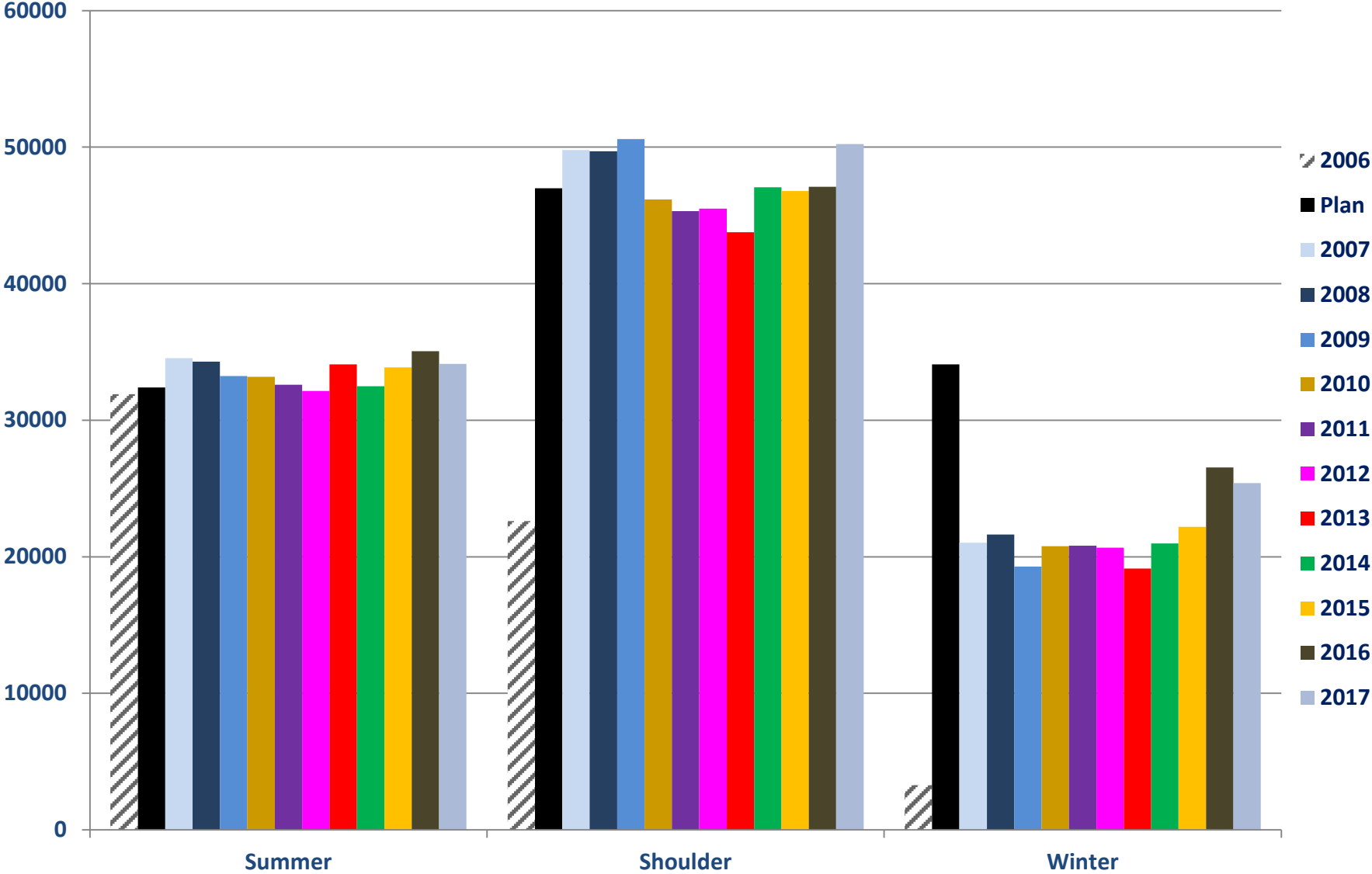
Noncommercial River Trips by Season



Noncommercial River Participants by Season



Noncommercial River User-Days by Season



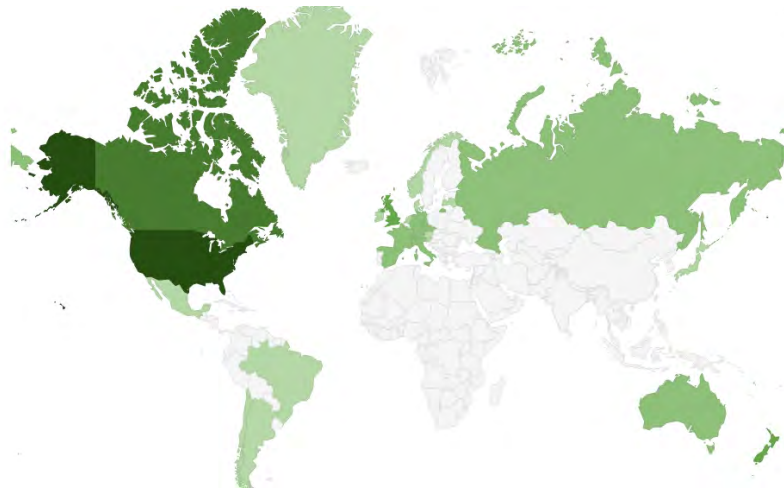
Noncommercial River Use by Season

Noncommercial		2007	2008	2009	2010	2011	2012	2013	2014	2015	2016	2017
User-Days	Summer	126,128	124,735	114,185	112,246	115,522	116,532	121,657	122,444	122,387	122,731	121,260
	Shoulder	72,246	72,082	71,699	68,229	68,882	67,759	65,675	70,595	71,248	73,320	76,443
	Winter	21,070	20,685	18,949	20,051	20,807	20,675	19,228	20,968	22,196	26,550	25,402
	Full Year	219,444	217,502	204,833	200,526	205,211	204,966	206,560	214,007	215,831	222,601	223,105
Trips	Summer	663	669	649	650	646	647	655	676	674	674	667
	Shoulder	321	317	321	320	313	314	326	341	336	337	345
	Winter	82	95	95	106	97	102	106	110	113	118	116
	Full Year	1,066	1,081	1,065	1,076	1,056	1,063	1,087	1,127	1,123	1,129	1,128
Passengers	Summer	18,158	18,016	16,095	16,177	16,670	16,912	17,659	17,925	17,837	18,049	17,948
	Shoulder	5,518	5,520	5,483	5,291	5,499	5,390	5,362	5,724	5,938	6,038	6,195
	Winter	1,059	1,061	927	1,034	1,053	1,060	1,020	1,046	1,108	1,357	1,273
	Full Year	24,735	24,597	22,505	22,502	23,222	23,362	24,041	24,695	24,883	25,444	25,416

Noncommercial River Lottery Applicants by Country

(all 2017 Lotteries)

Applications	By Country
7,950	United States
237	Canada
45	New Zealand
40	United Kingdom
17	Czech Republic
16	Australia
13	Germany
13	Italy
12	Switzerland
7	Russia
7	Spain
6	France
4	Austria

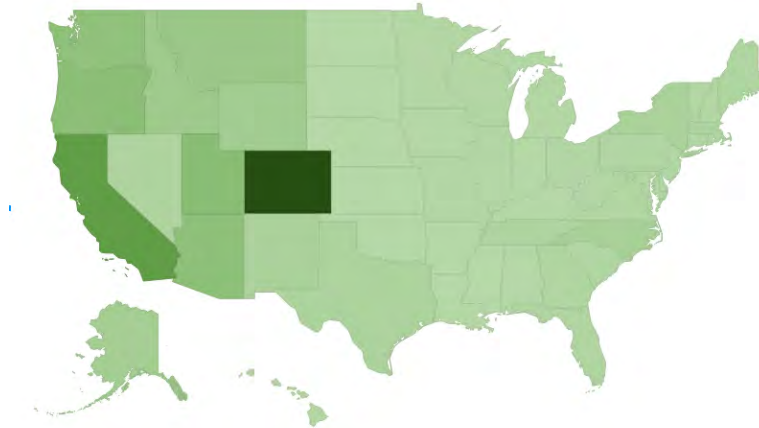


Applications	By Country
4	Ireland
4	Mexico
4	Netherlands
3	Denmark
3	Northern Mariana Islands
3	Norway
2	Argentina
2	Chile
2	Greenland
1	Brazil
1	Japan
1	Latvia
1	Slovenia
1	Vanuatu

Noncommercial River Lottery Applicants by State

(all 2017 Lotteries)

Applications	State
1,940	Colorado
1,087	California
561	Utah
540	Oregon
506	Arizona
475	Washington
343	Montana
293	Idaho
250	Wyoming
210	Alaska
165	North Carolina
146	New Mexico
132	New York
114	Texas
96	Nevada
93	Massachusetts
91	Tennessee
68	Georgia
67	Maine
59	Pennsylvania
53	Florida
52	Virginia
49	South Carolina
47	West Virginia
45	Maryland
39	Vermont



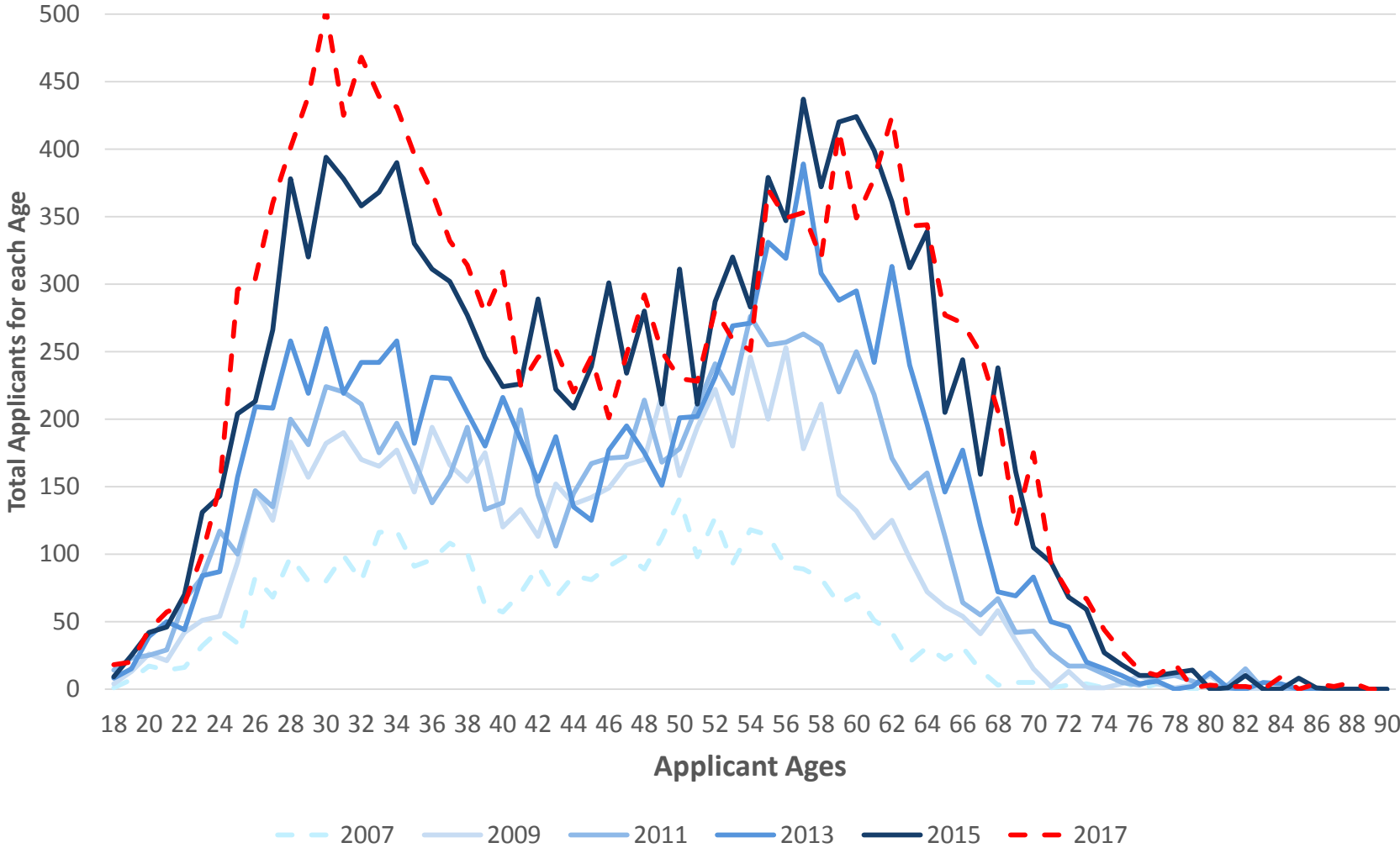
Applications	State
36	Ohio
36	Illinois
35	Wisconsin
33	Missouri
32	Minnesota
31	New Hampshire
27	Michigan
24	New Jersey
21	Connecticut
20	Iowa
18	Hawaii
13	Alabama
13	District of Columbia
11	Indiana
10	Arkansas
10	Kansas
9	Kentucky
8	Oklahoma
8	South Dakota
7	Louisiana
7	Nebraska
6	Mississippi
6	Rhode Island
5	Delaware
1	AP
1	--
1	North Dakota

Noncommercial River Lottery Applicants by Location

(all 2017 Lotteries)

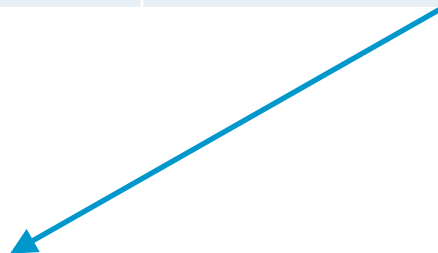


Noncommercial River Applicant Age Distribution by Lottery Year



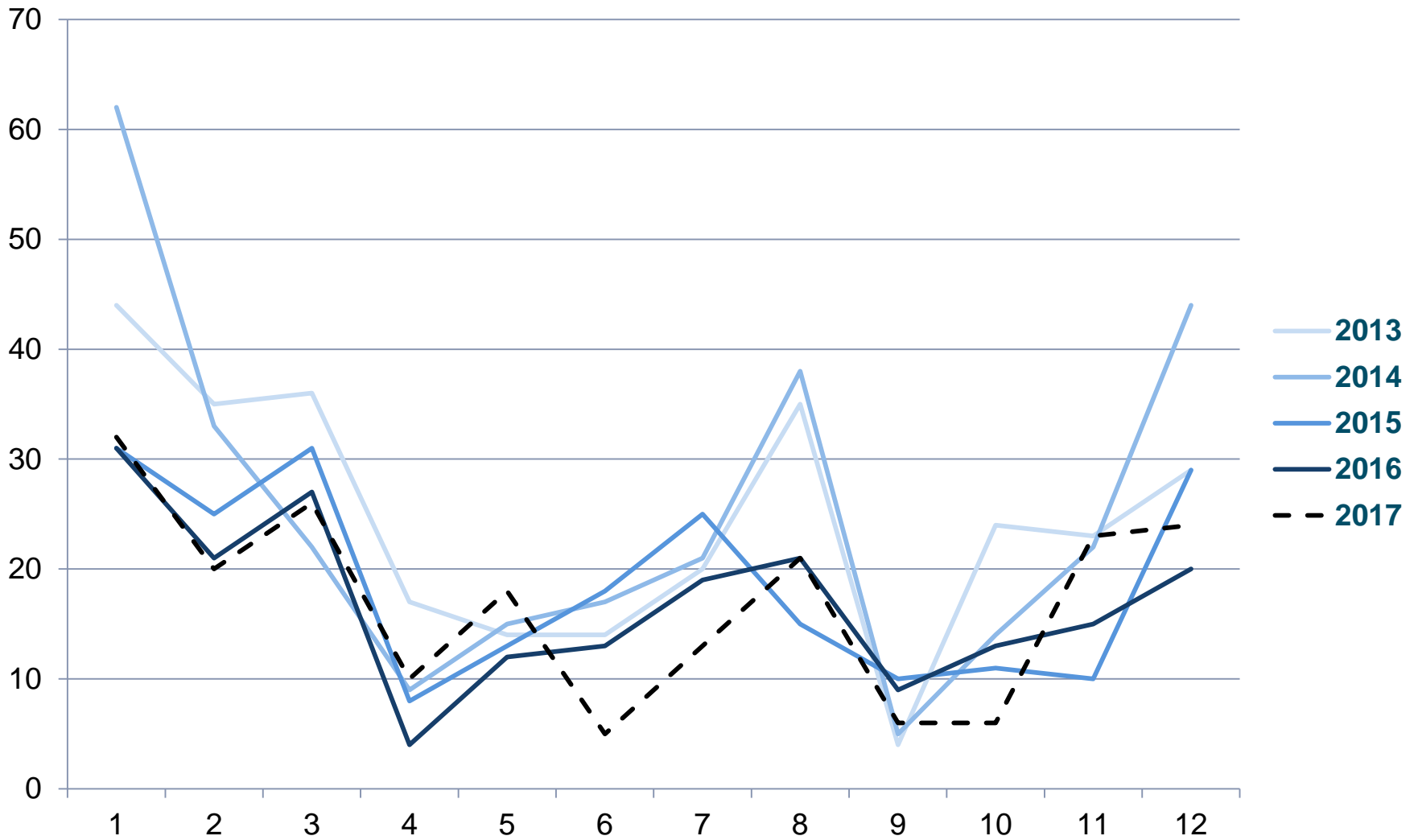
How Many Noncommercial River Applicants Ended Up On Trips?

Lottery Year	Main Lottery Applicants	Went on a Grand Canyon Noncommercial River Trip in Same Year	Percent
2015	4212	1295	31%
2016	4911	1425	29%
2017	5550	1474	27%



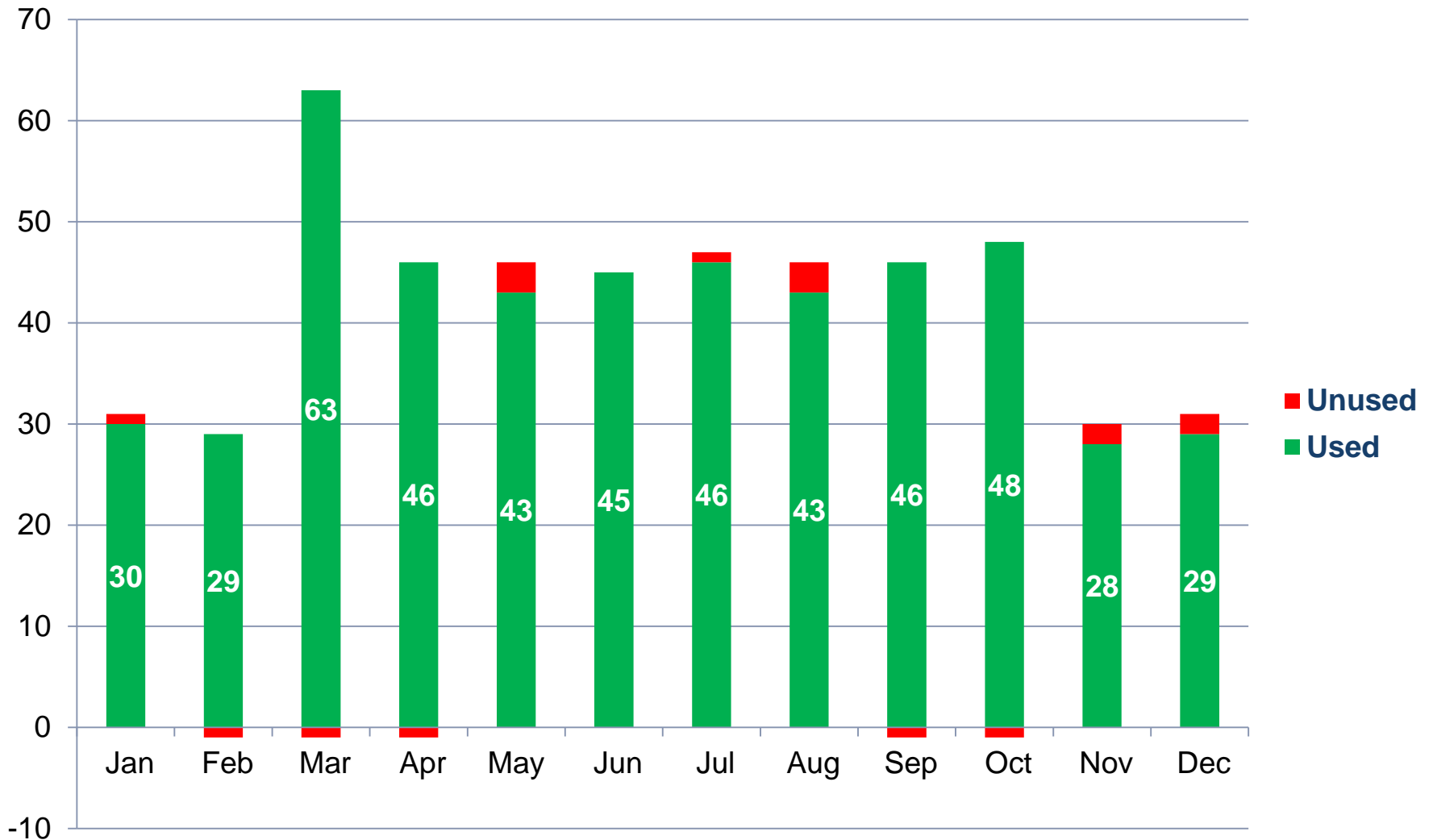
2017 Participants who Applied in Main Lottery	How They Ended Up Going
482	Trip Leaders
992	Participants
81 (not counted in total because did not go on trip)	Main Lottery Applicants that Won Trip but Did Not Go

Noncommercial River Cancellations by Launch Month



Noncommercial River Launches in 2017

496 Used



Noncommercial River Lotteries Run in Calendar Year 2017

Title	Launch Year	Number of Available Dates	Total Valid Applications
2017 Follow-up Lottery, 1-26-2017	2017	9	216
2018 Main Lottery, 2-22-2017	2018	463	6,650
2017 Follow-up Lottery, 3-23-2017	2017	15	1,104
2018 Follow-up Lottery, 4-6-2017	2018	67	3,317
2017 Follow-up Lottery, 4-20-2017	2017	8	445
2017 Follow-up Lottery, 8-3-2017	2017	14	434
2017 Follow-up Lottery, 8-31-2017	2017	5	160
2017 Follow-up Lottery, 9-28-2017	2017	7	161
2018 Follow-up Lottery, 10-5-2017	2018	24	2,345

Noncommercial River Lottery Applications in Calendar Year 2017

LOTTERY APPLICATIONS IN 2017

Total valid lottery applications submitted = 14,929

Total individuals who applied = 8,403

4,755 applied 1 times

1,869 applied 2 times

1,106 applied 3 times

401 applied 4 times

168 applied 5 times

74 applied 6 times

18 applied 7 times

4 applied 8 times

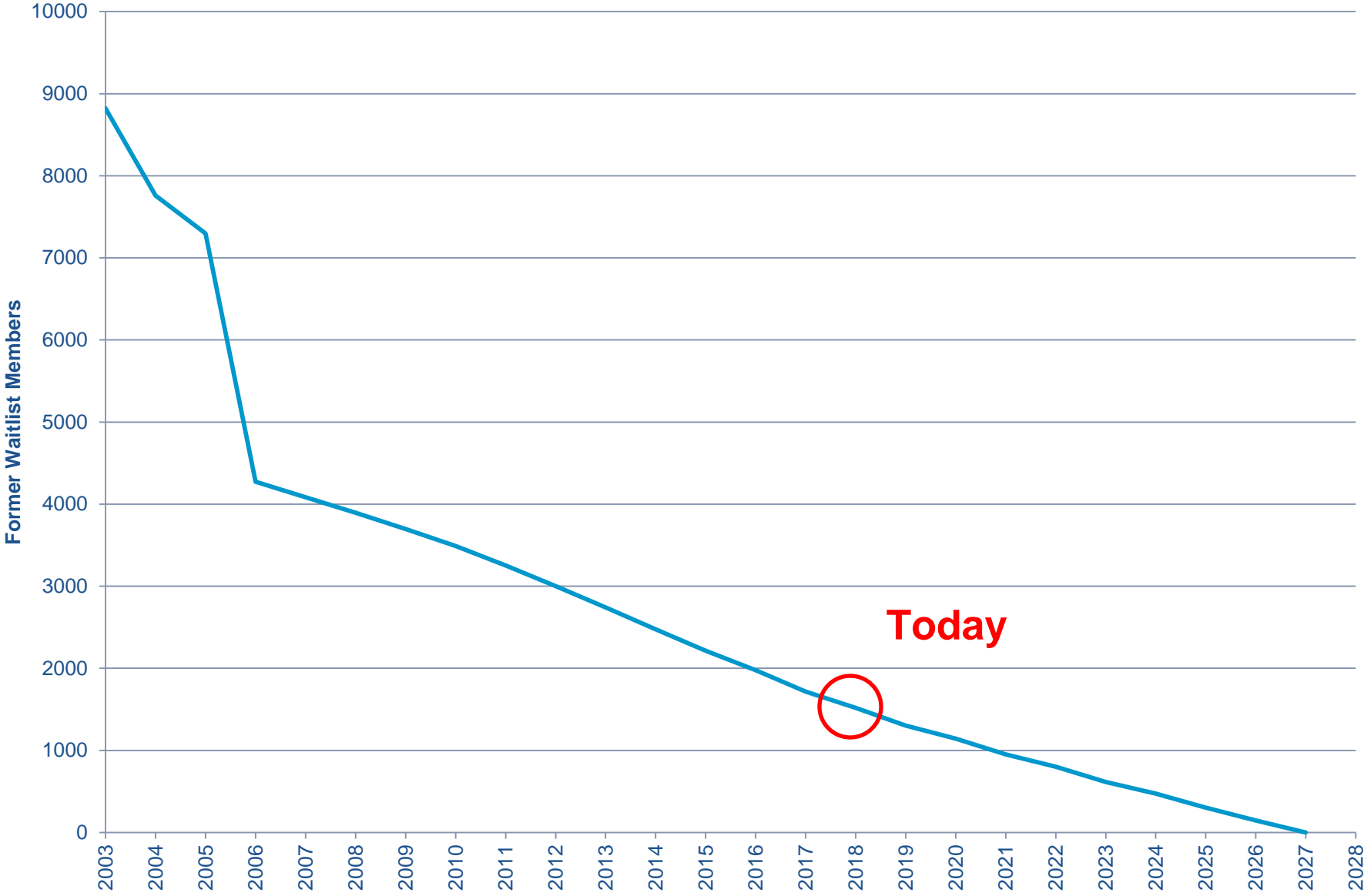
8 applied 9 times

Special Assistance for Eligible Former Waitlist Members (Noncommercial River)

If person's 2005 waitlist number was between	Year In Which They Will Be Given Assistance	Can Pre-Schedule Trips From:	Total Who Still Qualify for this Help
05#00001 - 05#00705	2007	2008-2012	0 - Completed
05#00706 - 05#00915	2008	2009-2013	0 - Completed
05#00916 - 05#01129	2009	2010-2014	0 - Completed
05#01130 - 05#01358	2010	2011-2015	0 - Completed
05#01359 - 05#01598	2011	2012-2016	0 - Completed
05#01599 - 05#01842	2012	2013-2017	0 - Completed
05#01843 - 05#02096	2013	2014-2018	0 - Completed
05#02097 - 05#02365	2014	2015-2019	0 - Completed
05#02366 - 05#02648	2015	2016-2020	0 - Completed
05#02649 - 05#02945	2016	2017-2021	0 - Completed
05#02946 - 05#03253	2017	2018-2022	0 - Completed
05#03254 - 05#03576	2018	2019-2023	0 - Completed
05#03577 - 05#03909	2019	2020-2024	158
05#03910 - 05#04255	2020	2021-2025	146
05#04256 - 05#04618	2021	2022-2026	168
05#04619 - 05#04990	2022	2023-2027	161
05#04991 - 05#05377	2023	2024-2028	185
05#05378 - 05#05781	2024	2025-2029	169
05#05782 - 05#06206	2025	2026-2030	204
05#06207 - 05#06648	2026	2027-2031	223
05#06649 - 05#07104	2027	2028-2032	203
05#07105 - 05#07296	2028	2029-2033	93

1710

Prediction for Former Waitlist Members Remaining Eligible for Special Assistance (Noncommercial River)



Questions?

Steve Sullivan
Steve_Sullivan@nps.gov